



Department of Special Education  
500 University Ave. W.  
Minot, ND 58707

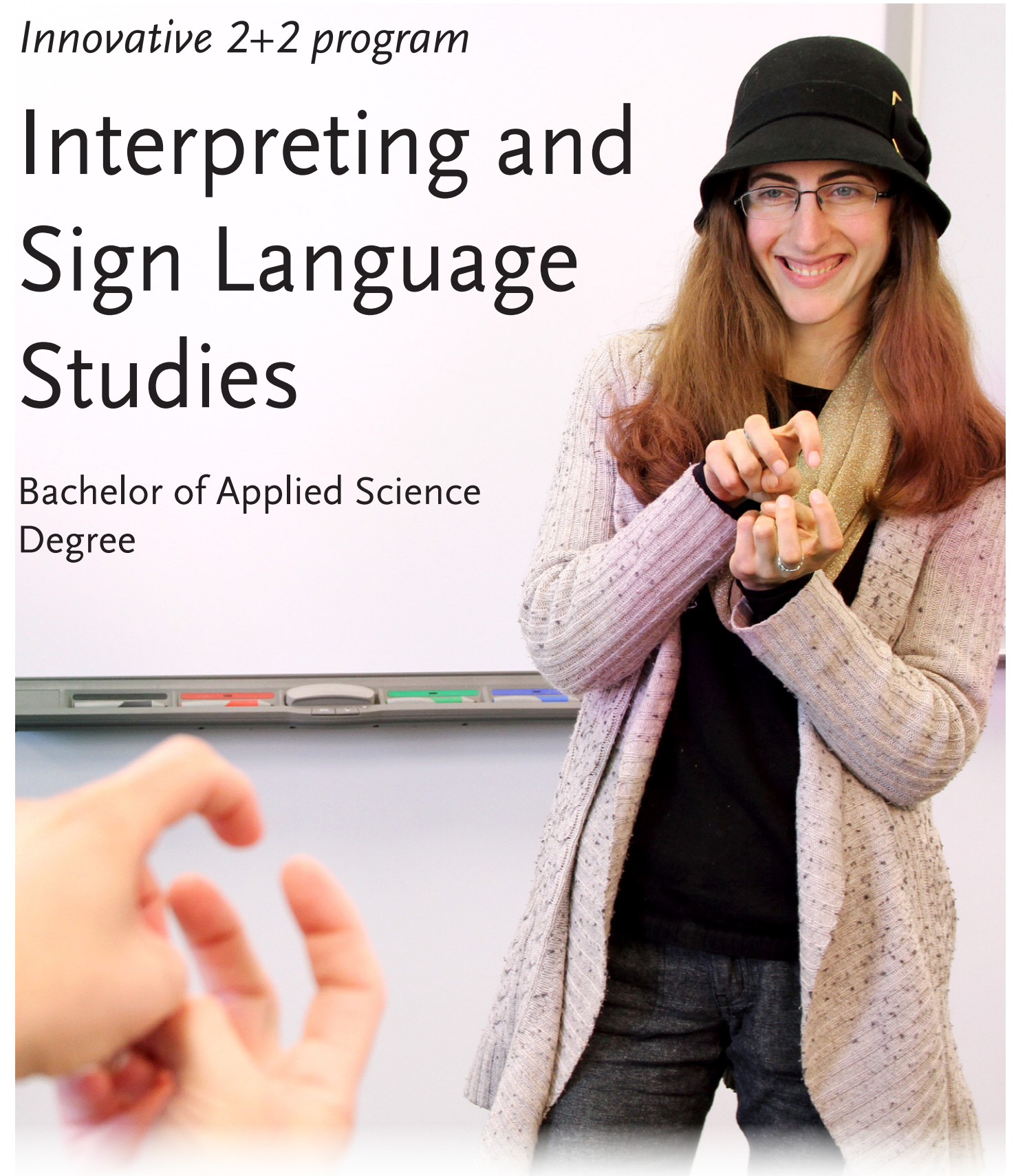


Become an  
**INTERPRETER**  
to redefine communication.

*Innovative 2+2 program*

# Interpreting and Sign Language Studies

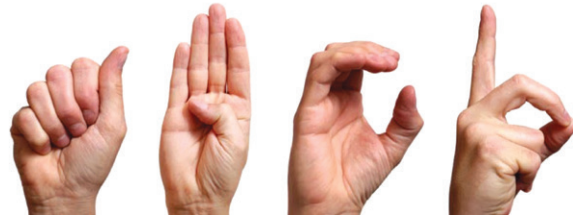
Bachelor of Applied Science  
Degree



New Degree

# Interpreting and Sign Language Studies

## Bachelor of Applied Science Degree



This innovative “2+2” program offers students the opportunity to complete an Associate of Applied Science degree in American Sign Language and Interpreting Studies with Lake Region State College and then transfer to Minot State University to complete the Interpreting and Sign Language Studies (ISLS) Bachelor of Applied Science degree (BAS). Students can take the entire program from either campus or from a remote location where courses are delivered via interactive live video technologies.

Minot State University, Lake Region State College and the ND School for the Deaf/Resource Center for Deaf/Hard of Hearing have developed this partnership to address the nationwide shortage of qualified interpreters.

All information subject to change.

### Who is the BAS degree designed for?

Students completing their AAS degree in American Sign Language and Interpreting Studies program at LRSC, as well as others who hold a similar degree from another institution, may apply for the BAS in ISLS. This program is ideal for candidates in rural and isolated areas who do not have access to larger on campus programs.

### How do I start?

Students who do not already have an AAS should enroll in LRSC’s AAS degree in American Sign Language and Interpreting Studies and then apply as a transfer student to Minot State University’s ISLS program.

### Is there a deadline for applying?

The BAS program director will work with students on an individual basis to outline the required course of action for program requirements.

### How will the specialized BAS degree be delivered?

Students should complete the AAS from LRSC and the BAS from Minot State University. Rural and isolated students may access the program remotely. Students can take both the AAS and BAS from either campus. Through a combination of real-time interactive video and online technologies, students can receive high quality coursework and participate in practical opportunities at a distance.

### What’s the purpose of the BAS degree?

The purpose of the BAS degree is to respond to the shortage of qualified interpreters locally and nationwide. This program lays a foundation to prepare professional ASL interpreters to work in a variety of settings. This degree is unique as it 1) provides continuous American Sign Language and Interpreting coursework throughout all four years of study, 2) supplements core coursework with special education and disability related content, and 3) allows students flexible general education and elective options.

### Is financial aid available?

Students can apply for financial aid from LRSC while completing the AAS and from MSU while completing the BAS. Students can apply for federal financial aid by submitting a Free Application for Federal Student Aid (FAFSA) at [www.fafsa.gov](http://www.fafsa.gov).

## BAS in Interpreting & Sign Language Studies Program

Years 1 and 2 = AAS in American Sign Language and Interpreting Studies at LRSC.

Additional requirements may apply for students holding an AAS not from LRSC.

Fall 1	Spring 1	Summer
ASL 101: ASL I (4) ASL 160: Fingerspelling & Numbers (3) ASL 150: Specialized Vocabulary I (2) CSCI 101: Introduction to Computers (3) ENGL 110: College Composition I (3) (15 credits)	ASL 102: ASL II (4) ASL 110: Fund of Interpreting/Ethics (3) ASL 250 Survey of Deaf Culture (3) ASL 170: Specialized Vocabulary II (2) COMM 110: Fund of Public Speaking (3) (15 credits)	
Fall 2	Spring 2	Summer
ASL 201: ASL III (3) ASL 271: English to ASL Interpreting (3) ASL 272: ASL to English Interpreting (3) MATH 103 College Algebra(3) ENG 120 (3) HPER elective (2) (17 credits)	ASL 202: ASL IV (3) ASL 251: Interpreter Cert. Preparation (2) ASL 297 Field Experience (4) PSYC 100: Human Relations in Organiz (3) Lab Science (4) or a 3 credit elective (16 credits)	

2

+

2

Years 3 and 4 = BAS in Interpreting and Sign Language Studies at Minot State University.

Fall 3	Spring 3	Summer
SPED 110: Intro to Exceptional Children (3) PSY 111: Intro to Psychology (3) SPED 312: Intermediate Sign Language (3) Lab Science or Math 103 if not completed or 2 electives (5-6) (14-16 credits)	SPED 250: Develop Comm Interactions (3) *odd years OR SPED 302: Lang & Comm Interventions (3) SPED 410: Intro to Mild Disabilities (3) SPED 412: Advanced Sign Language (3) SPED 420: Inclusive Practices (3) 1 electives (3) (15 credits)	
Fall 4	Spring 4	Summer
SPED 210: Intro to D/HH Education (3) SPED 316 Intermediate Interpreting (3) PSY 255: Child/Adolescent Develop (3) or SPED 140: Human Development (2) online 2 electives (2) (14-15 credits)	SPED 250: Develop Comm Interactions (3) *odd years OR SPED 302: Lang & Comm Interventions (3) SPED 318 Advanced Interpreting (3) SPED 433: Advanced Field Experience (4) SPED 445: Collaborative Partnerships (3) SPED 499: Special Topics: Interpreter Certification Preparation II (1) Elective (3)	

Must meet general education requirements of 36 credits (specified in the articulation agreements)

AAS 63 + BAS 60 = 123 Total credits for the BAS degree

30 upper division credits (28 + 1 elective must be a 300 or 400 level course)

## FOR MORE INFORMATION

### MINOT STATE UNIVERSITY

Holly Pedersen, Ed.D. BAS Program Director  
Chair, Department of Special Education  
[holly.pedersen@minotstateu.edu](mailto:holly.pedersen@minotstateu.edu)  
701-858-3846 • 800-777-0750

### LAKE REGION STATE COLLEGE

Lisa Ginther  
American Sign Language &  
Interpreter Studies Program Coordinator  
[lisa.ginther@lrc.edu](mailto:lisa.ginther@lrc.edu) • 701-662-1649