



Photo by Anthony Anderson

The PASC Christmas tree is displayed in front of the MSU Bookstore. The club encourages everyone to take a paper ornament and donate the item listed by Dec. 14.

## PASC holds donation drive

**Kelsey Eaton**  
*PASC Vice-President*

As the flood waters rose and the sirens sounded early on June 22, 2011, many families in the Minot area packed the last load of their belongings and evacuated their homes. Most of these families did not take all of their belongings with them, often sacrificing sentimental value for purposeful utility. Holiday decorations were, for many, sentimental items left behind.

As the city of Minot moves into the holiday season only months after the devastating flood, there is a different feel in the air. This year, and for years to come, many houses that were once lit up with lights for months on end now sit dark and desolate; gutted from the inside out.

Many homes are FEMA trailers that have been slowly making

their way into Minot to house families and individuals who lost their homes in the flood.

The Psychology and Addiction Studies Club (PASC) of Minot State University understands the need for some sort of normalcy during a holiday season which, for many, does not resemble normal; thus the holiday decoration donation drive for flood victims is underway.

"Many families left their Christmas decorations when it flooded. I know I left mine," one PASC member said. "It would be nice to spread some cheer this season."

The idea behind the project is simple. Grab an ornament off the tree located outside the entrance to the bookstore in the Student Union, obtain the item listed and

**See PASC — Page 7**

## KMSU Auction helps rebuild Minot



Photo by Anthony Anderson

KMSU Auction helpers (from the left) Yu Young Jang, Candace Brekke and Aaron Larson prepare auction packages. The auction was held Tuesday. Proceeds went to Beavers Rebuild, a fundraiser to benefit families affected by the recent flood.

## 'A Christmas Carol' hits Aleshire Theater

**Jamie Council**  
*Comm 281*

It's that time of year. With Christmas just around the corner, the Minot State University Campus Players will put on a Christmas production, "A Christmas Carol," directed by Daniel Johnson.

Based on the original version by Charles Dickens, the play has been adapted to a dramatization and cut down to better suit its audiences. Unlike in past years, students completely direct and perform this production.

"That's one of the things that's different with it this year," Kevin Neuharth, MSU Director of Theatre, said. "In the past, when we've done 'A Christmas Carol,' we've incorporated some school-

age children as some of the younger roles. This year, because we are taking it out on tour, we decided we'd use nothing but college students. So that's interesting, that our students are playing some of the younger roles. For example, Kristi Anderson will play the role of Tiny Tim."

Campus Players will travel to several elementary schools and nursing homes before the first public performance on Saturday, Dec. 10. That performance begins at 7:30 p.m. in Aleshire Theater.

Ticket prices are \$6 for adults and \$5 for students and seniors. For reservations, call 858-3172. For more information or questions, contact Kevin Neuharth at 858-3879 or by email kevin.neuhearth@minotstateu.edu.

# Voices on Campus

“Did you participate in intramural sports this year? Why or why not?”

Amber Penrose  
Staff Photographer



**Arianna Hackett**  
*Theatre Arts*

“No, I wouldn’t know about them until a few days before the deadline, and by then it was too late to take off of work or put a team together.”



**Betsy Miller**  
*Nursing*

“I did not have time to participate in intramurals because I had to balance my time between classes, hockey and softball.”



**Colleen Bertrand**  
*Chemistry*

“I didn’t participate in any intramural sports because I’m already active in the softball program at MSU, and with my major I don’t have time to do much else.”



**Gregory Groesbeck**  
*Criminal Justice*

“Yes, flag football because I am in the off-season of track, and some teammates wanted me to join.”



**Jamie Council**  
*Broadcasting*

“Yes, I did intramural bowling to have fun and bond with my roomies.”

## News in brief

### MSU history poster session

Today, beginning at 1 p.m., Mark Timbrook’s First Year Experience class will hold a poster session on the second floor of Old Main, west wing. The various posters displayed will discuss the history of the early Minot Normal School. The event is free and open to the public.

### OATS offers massages today

The Organization of Athletic Training Students will offer massages today to students to help relieve finals week stress. The massages are from noon to 4 p.m. in the Swain Hall sports medicine training room on the first floor. The cost for a massage is \$5 for 10 minutes or \$10 for 20 minutes.

### Make your own tie blankets

Tonight, at 9 p.m. in the Beaver Dam, MSU After Dark will host “Make your own tie blanket.” All students are welcome, but supplies are limited, so please arrive on time. Organizers ask students to bring scissors and their MSU ID.

### Angel Tree gifts due Dec. 9

Lutheran Campus Ministry asks that anyone who took a tag off the Angel Tree in the Student Center Atrium bring the unwrapped gift and tag to the bookstore by Friday, Dec. 9.

### ‘A Christmas Carol’

On Saturday, Dec. 10, the MSU Campus Players will present “A Christmas Carol,” directed by junior Daniel Johnson. The show begins at 7:30 p.m. in Aleshire Theater. Tickets are \$6 for adults

and \$5 for students, children and senior citizens. Call 858.3172 for reservations.

### ‘Synthesia’ exhibit

Senior Briana Schwan’s senior exhibition, “Synthesia,” will be on display until Dec. 30 in the Northwest Art Center Library Gallery. The theme of the exhibit is “visualizing music through photography.”

### Finals Breakfast

The annual Finals Breakfast is Monday, Dec. 12, from 9 p.m. to 10:30 p.m. in the Beaver Creek Café. All students are welcome; must show MSU ID upon entrance.

### Self-defense workshop offered in Jan.

A self-defense workshop for students will be held Jan. 19 and Jan. 26 in Swain Hall pedagogy lab. Richard Seklecki, MSU criminal justice instructor, will lead the

workshop.

Registration deadline is Jan. 18 for the Jan. 19 workshop, and Jan. 25 for the Jan. 26 workshop. Register with a partner in the Power Center or call Lynn at 858-4047. Free pizza provided afterward.

The workshops are sponsored by the Student Success Center, the Power Center and Student Government Association.

### ‘Vagina Monologues’ auditions set

The Theater Program will hold auditions for the “Vagina Monologues” on Jan. 11 and 12 at 7 p.m. in the Black Box Theatre in Hartnett Hall. Auditions are open to female MSU students, faculty, staff and community members. Males who wish to get involved behind the scenes, such as in concessions or set construction, should contact Penny Lipsey at penny.lipsey@my.minotstate.edu or at 701.340.3262.

## Today in History

- 1660:** Margaret Hughes is the first woman to appear on stage in Britain. Previously, all female roles were played men.
- 1941:** The United States declares war on Japan, following the Dec. 7 attack on Pearl Harbor
- 1952:** "Pregnancy is mentioned for the first time on television in an episode of "I Love Lucy."
- 1980:** John Lennon is shot and killed outside of his apartment building.
- 1991:** The Soviet Union is formally dissolved.
- 2009:** In Burma, authorities burn \$93 million worth of confiscated drugs

(Courtesy of Brainhistory.com)

# Security and safety is of great importance

Amy Olson  
Comm 281

The influx of crime in Minot this summer was a topic of hot discussion. Residents questioned their wellbeing in a town known previously for its safety. With the university being home to hundreds of students, campus security is of great importance.

For that purpose, Minot State University has hired a new Minot resident, Bill Chew, to fill a new position on campus – Superintendent of Security. Chew’s position previously fell under the duties of Assistant Vice President of Facilities Management Roger Kluck.

Members of MSU’s Student Government Association (SGA) recently conducted a “campus security walk” to evaluate campus safety. Their findings included areas with poor lighting, overgrown shrubbery and 24 burnt out lights.

Kluck attributes these outages to light use and to the flooding this past summer. The campus is currently working to replace these lights.

Poorly lit areas around campus will receive new lights. The plan calls for more streetlights and spotlights placed on buildings. Workers will install them next spring and summer, when the weather is better for construction. They will also install “blue lights” at that time.

“Blue lights are stands with a ‘panic button’ that can be pressed to be connected with security,” Chew explained. These stands

include cameras and a telephone-like system that connects the user with a 9-1-1 dispatcher.

The SGA and the university cabinet discussed the initiative of blue lights in October, 2007. In a 2008 meeting, the university cabinet reported that NDUS included money in their budget to help with the installation costs. However, there are no blue lights yet on the MSU campus.

The “Minot State University Landscape Master Plan” submitted in 2008, and the 2010 MSU Fact Book both mention blue lights. Near the end of 2011, the blue lights’ existence remains solely on paper.

Kluck said the university requested the estimated \$520,000 for purchase and installation from the North Dakota legislature last year. The legislature denied the funding, but will vote on the request again this year.

Kluck said that if the legislature once again denies funding, the university would begin to take money out of the maintenance funds to pay for the lights. The project of installing the 24 blue lights will begin next summer, along with the continuation of the campus re-landscaping.

“Currently, the campus is working on upgrading the security cameras and hiring two new security guards,” Kluck said.

Campus security has also come up with a business card with phone numbers for individuals to call with any security concerns.

“Overall, we have a relatively safe campus,” Chew said.

## Student Spotlight

# Sierra Lassila

Anthony Anderson  
Editor

Sierra Lassila has only been attending Minot State University for one semester, but she hasn’t hesitated to make a splash in the campus community, helping to serve the students of MSU as a member of Lutheran Campus Ministries, Chi Alpha and CRU.

“I really just have a passion to serve the Lord,” Lassila said.

As a Peer Minister with Lutheran Campus Ministries, Lassila helps to organize various events, reaching out to the campus community. She helps plan the group’s “Sunday Night Supper” and “Wednesday Night Alive” events, and is a constant presence at the soup lunches held each Tuesday. She is also helping to organize the LCM spring break mission trip to Colorado, and will be going on the trip this spring.

Campus Pastor Kari Williamson has worked closely with Lassila since she transferred to Minot State from Valley City State University this fall.

“I first met Sierra two summers ago,” Williamson said, “when she was working at Camp of the Cross in Garrison. She’s always reaching out to people ... She really does live her faith in her daily life.”

Originally from Garrison, Lassila is triple-majoring in international business, marketing and management (plus an accounting concentration). When she graduates, she plans to spend some time doing mission



“I really just have a passion to serve the Lord.”  
– Sierra Lassila

work, but eventually hopes to find a position with an internationally-active nonprofit corporation.

Lassila is currently preparing to work in Africa with “Adventures in Missions,” an international Christian group. She will work for several weeks in eastern Africa, “probably somewhere in Kenya, Tanzania, or Uganda,” she said.

During her time there, she will work with orphanages and hospitals to help improve the quality of life for people living in the area.

“I’m pumped. Stoked, actually,” Lassila said with a grin. She said she needs support for her trip, particularly in the form of prayers and encouragement. She will also sell t-shirts for \$20 each to help finance the trip. Anyone interested in purchasing a T-shirt can contact her at s.lassila@my.minotstateu.edu, or at 701-898-9981.

## Who’s Who Among Students in American Universities and Colleges

Minot State University believes there are many deserving students on campus who are eligible for nomination to “Who’s Who Among Students in American Universities and Colleges.” For over 70 years, this national program has honored outstanding campus leaders annually for their scholastic achievements and community activities.

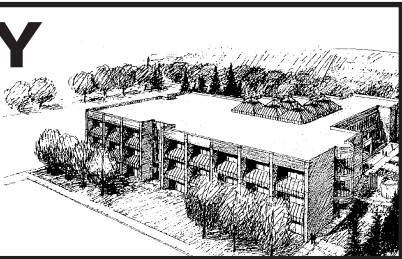
Selection for this award is based on the following criteria:

- Student must have attended MSU full-time for four consecutive terms, including the current fall term (excluding summer sessions)
- Student must be a university junior or senior
- Student must have a cumulative GPA of 3.0 or better
- Student must not have received Who’s Who recognition in the past
- Student must not have received a previous degree

If you feel you meet all of the above criteria, pick up a nomination form to nominate yourself at the Student Affairs Office, Admin. 164, or at the Student Activities Office on the second floor of the Student Center. Nomination forms should be turned in at the Student Affairs Office by Jan. 13, 2012, or may be mailed to:

Who’s Who Nominations  
MSU Student Affairs Office  
500 University Ave. W.  
Minot ND 58707

LIBRARY  
HOURS  
858-3200





# On Movies



## *The Muppets: “It’s time to light the lights”*

**Brandyn Hansen**  
*Columnist*

When I saw the previews for the new Muppets movie I was very excited, as it brought back a feeling of nostalgia from my childhood. (My favorite was the chef). I remember watching the movies all the time when I was a kid. So naturally, I knew I had to check it out, and when my

niece came to town I knew I had my excuse to go. I think I was more excited than she was. The film begins with an introduction of a new puppet character named Walter. Walter lives in SmallTown USA with his real life brother Gary (Jason Segal). Walter grows up watching “The Muppets” on TV and is their biggest fan. When Gary decides to take his long-time girlfriend Mary (Amy Adams) to Los Angeles, he decides to take Walter along so he can visit

the Muppet Studios. Upon arriving, they are disappointed to find a broken-down theater and no Muppets. Walter takes it upon himself to tour Kermit The Frog’s old office when he overhears a secret plot for oil baron Tex Richman (Chris Cooper) to buy the studio and dig for oil, unless the Muppets can raise \$10 million and buy it back. Walter knows what he must do and sets out on a mission, with the help of Gary and Mary, to

find Kermit and reunite the Muppets. After doing a montage and a little traveling by map, they are able to get the old crew together, even tracking down Kermit’s long-time love, Ms. Piggy. They find Fozzy performing with a grungy Muppet tribute band, The Moopets. Gonzo is the head of his own plumbing company, and Animal is stuck in celebrity anger-management therapy. Together they are able to restore the old Muppet

Theater and even kidnap celebrity host Jack Black. Throughout all this, our main characters, Gary and Walter, must decide where they belong in life as either a Muppet or a man. Overall, this was a very fun, well-put-together movie. It wasn’t over the top or some lame reboot of the Muppets, but a story about a lovable group of characters that have been entertaining us for decades. (4.5 out of 5 Beavers)



# On Music



## *How do the words ‘Christmas music’ make you feel?*

**Ward Lamon**  
*Columnist*

According to the most reliable source ever, Wikipedia, the Christmas creep “is a merchandising phenomenon in which merchants and retailers exploit the commercialized status of Christmas by moving up the start of the holiday shopping season.” To back this up with the second most trustworthy source out there, Urban Dictionary, the Christmas creep “is a phenomenon where the

Christmas season starts earlier and earlier each year.” Alright, so whereas those two sites may not hold the top-ranking positions of legitimacy found in online sources, the term “Christmas creep” is, in fact, real. You see, while it does apply to retailers pushing out commercialized Christmas-themed goods onto the floor sooner and sooner, it also ties into music [...as if I would randomly decide to do this column on a topic like imported Christmas toys made with lead-based paint instead?]. As you may have already noticed, Christmas tunes have already hit radio stations. The reason why this occurs is because it’s

been proven from previous years that a listener will stick with whichever station they hear make the transition to Christmas music first for the whole entirety of the holiday season. It is due to this extended length of season that Christmas music doesn’t seem to sit too well with most people, overall. I’m not hating on Christmas music, but ultimately, there exist two kinds of people: Those who love Christmas music with a devoted fervor and those who hate Christmas music with a burning passion, with hardly any middle “neutral” ground in between. Personally, I really want to like Christmas music, but I find that

the average radio station just doesn’t give it much justice. However, I’ve found many alternatives to the same old Christmas music that grows old after being played for such a long period of time. In fact, just about every genre out there has holiday music covered! **Rock:** Metalcore band August Burns Red has done a few songs such as “Carol of the Bells,” “O Come, O Come Emmanuel,” “God Rest Ye Merry Gentlemen” and also “Little Drummer Boy,” Austrian Death Machine, a side project of As I Lay Dying’s lead singer, has a holly jolly EP titled, “A Very Brutal Christmas.” Lastly, the compilation album “X:

Christmas” features a solid rock-styled sound as well. **Electronic:** The one and only Basshunter does “Jingle Bells Cover” on his album “LOL,” hands down best mix of techno and Christmas out there. Also, if you’ve heard of Unicorn Kid [I doubt you have, but if you enjoy 8bit/electronica, then get on checking his stuff out], he does a Christmas medley titled “Jingle Jingle,” Also, reppin’ for the europop subgenre, Cascada does her rendition of “Last Christmas.” **Rap:** FF5’s “Family Force 5’s Christmas Pageant” lands itself into the genre of rap with its unique crunkcore sound. See Ward — Page 4

# Red & Green

304 Student Center  
Minot State University  
500 University Ave. W  
Minot, ND 58707  
**Phone:** 858-3354  
**Fax:** 858-3353

**E-mail:** redgreen@minotstateu.edu  
**ONLINE:** www.minotstateu.edu/redgreen  
**Adviser:** Frank McCahill

**EDITOR**  
Anthony Anderson  
**ASSISTANT EDITOR**  
Bryce Berginski  
**ONLINE EDITOR**  
Scott A. Jones  
**CIRCULATION**  
Doug Richter

**Letter Policy:** Letters to the editor must bear the writer's name, e-mail address and telephone number. Students must include year in school and major. Only letters from students, faculty or staff will be published. We will not print unsigned letters, and we reserve the right to edit all letters for factors such as clarity, punctuation, spelling and length. We reserve the right to refuse to print letters we consider libelous, superfluous or ridiculous. Please submit all letters before noon on the Thursday prior to publication. Students are limited to four letters for publication per semester. Letters may be e-mailed to redgreen@minotstateu.edu. **Views** expressed by this publication are not necessarily those of the university, its administration, faculty or student body and is not responsible for the content. Red & Green is printed at Minot Daily News, Minot, N.D.

Letters to the Editor

Hazing disturbing

As an alumna member of a national sorority, I found the image on the front page of the Nov. 17 edition of the Red and Green to be disturbing. This photograph clearly shows a fraternity engaged in hazing.

There are multiple definitions of hazing. The bottom line is that hazing is an activity that involves harassment, abuse or humiliation as a way of initiating a person into a group. Hazing is legally defined in North Dakota by 12.1-17-10. *A person is guilty of an offense when, in the course of another person's initiation into or affiliation with any organization, the person willfully engages in conduct that creates a substantial risk of physical injury to that other person or a third person. As used in this section, "conduct" means any treatment or forced physical activity that is likely to adversely affect the physical health or safety of that other person or a third person, or which subjects that other person or third person to extreme mental stress, and may include extended deprivation of sleep or rest or extended isolation, whipping, beating, branding, forced calisthenics, overexposure to the weather, and forced consumption of any food, liquor, beverage, drug, or other substance. The offense is a class A misdemeanor if the actor's conduct causes physical injury, otherwise the offense is a class B misdemeanor.*

For years the Greek community has been working to overcome the perception of Greek culture that stemmed from earlier decades and has been portrayed in movies. This photograph is not what belonging to a Greek organization is about, however groups behaving in this manner continue to perpetuate that culture.

"Greek life teaches you how to be a leader among your group." This is a direct quote from Dave Aas, Mu Sigma Tau alumni president taken from a March 2010 interview.

I would agree with that statement and add that Greek life also fosters friendships, promotes philanthropy, encourages scholarship, and advocates being an involved and responsible citizen.

However, with this one photo, all the positive things about being Greek are thrown away and lost in an activity that in no way can be said to promote leadership, friendship, scholarship, philanthropy or responsibility.

As a member of the Minot State Community, I am saddened to see this action displayed in the Red and Green as some sort of legitimate campus activity. This not only reflects poorly on the fraternity, but on the MSU campus as a whole. What prospective parent seeing that image wants to send their child into that environment?

While I am disappointed by the hazing depicted in this photo, I am also appreciative because hopefully it will open lines of communication about hazing and allow for the establishment of a policy to handle this and any future situations that may arise on campus.

Society at large tends to frown upon hazing. It is currently receiving national press due to the recent death of a band member at Florida A & M from hazing. While this photograph is nowhere near that severe, I find myself wondering what other tasks are being asked of these young men that we are not seeing.

Given that Mu Sigma Tau does not have a national headquarters to maintain standards and regulations, I hope that the individuals affiliated with this local fraternity, active members and the mentoring alumni members will realize the error in judgment on this occasion and take steps to ensure that hazing does not occur within their organization again.

Sarah Carr  
Research Professional, NDCPD

Help return missing items

Dear Students and Faculty of Minot State University,

I received both my bachelor's and master's degrees in music from Minot State and, along with my husband, have been a supporter of the university and of Western Plains Opera Company. For many years, I was the stage manager and my husband, the tech director.

One and a half years ago I loaned three heirloom items for use in the opera "La Traviata" – my grandfather's medical bag, a gold velvet and bead bag and my mother's full length black velvet coat. Only the medical bag was returned to me.

It is presumed that someone took the other items from one of the dressing rooms in Old Main. If you perhaps borrowed these items for use as a costume, please return them to the Music Division office - no questions asked! If you know of someone who may have stolen them to sell on e-bay, please leave a note at the division office stating who purchased them.

I will try to buy these items. These items are important to me and my family; we had intended to pass them on to my granddaughter. Thank you very much.

Ellin Lindee 858-0863  
900 21st Street NW  
Minot, ND 58703

Remember  
to register  
for spring  
classes!

Hazing reviewed

A front page photo in the November 17, 2011 edition of the Minot State University student newspaper, the Red & Green, caught my attention as well as that of a number of readers, both on and off campus. The picture showed a Mu Sigma Tau Fraternity pledge attempting a pushup on a table with weights on his back and a spoon in his mouth. Resting on the spoon was an egg signed by each active fraternity member with an explanation that the egg would not be returned to the pledge for safekeeping until the assigned "task" had been successfully performed. The opportunity to review this matter does present what many would term a "teachable moment" for all of us associated with student groups. Hazing quickly crosses lines of

acceptable behavior and in extreme cases can cause injury or death. One only need read about the recent death of a marching band member at Florida A&M to realize how serious the matter gets. Hazing is prohibited by both state law and the Minot State University Student Conduct Policy:

"Hazing by university groups is prohibited on or off campus. Hazing is defined by North Dakota Century Code 12.1-17-10. A person is guilty of an offense when, in the course of another person's initiation into or affiliation with any organization, the person willfully engages in conduct that creates a substantial risk of physical injury to that person or a third person. As used in this section, "conduct" means any treatment or forced physical activity that is

See Hazing — Page 6



**ALWAYS READY.  
ALWAYS THERE.**

At a moments notice, the North Dakota Army National Guard is there to help. Now is your moment to make a difference in your community, state and country. Contact your local Guard representative today.

**NATIONAL GUARD** 

SSG Adam Helgeson: 701.340.6376  
NDGUARD.com

- Excellent Starting Pay
- Up to 100% Tuition Assistance
- Serve Your Community, State & Country
- Hands-on Technical Training in Real-life Careers



# The art of belly dancing



Photo by Amber Penrose

MSU students participate in belly-dance lessons in the Beaver Dam. Soodabeh Haji Akhondi, a trained Persian bellydance instructor and exchange student from MSU’s partner school in Sweden, taught the class last month. The event was part of a celebration of International Education Week.

## ... Hazing continued from page 5

likely to adversely affect the physical health or safety of that other person or a third person, or which subjects that other person or a third person to extreme mental stress, and many included extended deprivation of sleep or rest or extended isolation, whipping, beating, branding, forced calisthenics, overexposure to the weather, and forced consumption of any food, liquor, beverage, drug, or other substance. The offense is a class A misdemeanor if the actor’s conduct causes physical injury, otherwise the offense is a class B misdemeanor.”

Because defining hazing can be somewhat nebulous I am copying below advice received from our North Dakota University System attorneys on my question to them of what constitutes hazing. I have provided this information to the Mu Sigma Tau leadership for navigating future directions for what we all recognize is the sole Greek social organization currently active on campus.

“It is appropriate that a concern about the nature of the activity as shown in the picture in the student newspaper is brought to your attention. It gives you an opportunity to fairly address such a concern, which is based upon a newspaper photo and short printed info accompanying that photo.

The photo and its accompanying printed information do not, in and of themselves, constitute evidence of “hazing.” The definition of “hazing,” as you know, must include the creation of “substantial risk of physical injury” or “extreme mental stress,” and the info in the paper presents no such concerns. However, and as you suggest, this photo and printed info, along with the concern raised by the complainant, does warrant a directive from you that faculty advisors review fraternity recruitment and initiation policies to ensure compliance with relevant policies and laws, including the anti-hazing law.”

“The state law that prohibits hazing focuses on “substantial risk of physical injury” or “extreme mental stress,” but note

inclusion of “forced calisthenics” in the definition. The photo and caption suggest this pledge was merely required to perform a single push-up and if that is indeed all that happened, demanding one push-up probably isn’t enough to amount to “forced calisthenics” and certainly doesn’t create a substantial risk of physical injury. Nevertheless, there could be cause for concern. If fraternity members are having a pledge do a push-up like this in front of a photographer for the school paper, what are they doing privately?”

In view of this good advice I have asked the faculty advisors and President of the Mu Sigma Tau Fraternity to review the actions depicted in this photo. I will be asking the leadership of all other campus student organizations to do the same. It is in all of our best interests to get this right. The practice of hazing on the part of organizations associated with Minot State University will not be tolerated.

**Dr. Richard Jenkins**  
**Vice President for Student Affairs**

## Solution to Problem of the Month November, 2011

**Problem :** Let  $f(x)$  be a polynomial of degree 2 with  $5f'(1) = 2f(2)$  and  $\int_0^1 f(x)dx = 0$ . If  $a$ , and  $b$  are two solutions of the polynomial, find  $a + b$ .

**Solution :**  
Assume,  $f(x) = k(x - a)(x - b)$ ,  $k \neq 0$ . Then  $f(x) = k[x^2 - (a + b)x + ab]$ . Differentiating  $f(x)$  with respect to  $x$ ,  $f'(x) = k[2x - (a + b)]$ .  $5f'(1) = 2f(2)$  gives  $5k[2 - (a + b)] = 2k[4 - 2(a + b) + ab]$ . Therefore,  $2ab + (a + b) - 2 = 0$ —(1)  
Second condition  $\Rightarrow \int_0^1 f(x)dx = \int_0^1 k(x - a)(x - b)dx = k \int_0^1 [x^2 - (a + b)x + ab]dx = 0$ . Therefore,  $\frac{x^3}{3} - \frac{(a+b)x^2}{2} + abx \Big|_0^1 = 0 \Rightarrow 6ab - 3(a + b) + 2 = 0$ —(2). Solve (1) and (2) for  $(a + b)$ , we get  $a + b = \frac{4}{3}$ .

**Congratulations to CARSON MOEN for solving the problem correctly.**  
Please send your questions or comments to [larry.chu@minotstateu.edu](mailto:larry.chu@minotstateu.edu) or [narayan.thapa@minotstateu.edu](mailto:narayan.thapa@minotstateu.edu)

Look for another problem of the month in the Red & Green next semester

**GET YOUR FLU SHOT!**

**Call 858-3371 for appointment**

Students \$10  
Faculty and Staff \$20

MSU STUDENT HEALTH CENTER  
LURA MANOR, SOUTH ENTRANCE  
ELEVATOR ACCESS AVAILABLE  
AT NORTHWEST DOOR

**Tuesday SOUP Bread & Conversation**

**Free soup lunch for MSU students**

**Every Tuesday**  
**11:30 a.m. – 1:30 p.m.**  
**Administration 158**

SPONSORED BY  
LUTHERAN CAMPUS MINISTRY

# Campus Compact

## Organization in need of more members

**Bryce Berginski**  
Assistant Editor

Campus Compact, a service organization that Minot State University participates with, is in need of student volunteers.

Designed to bolster civic engagement and promote the greater good, Campus Compact is an organization specific to colleges and universities. Any college or university – public or private, two-year or four-year – can be a member. The organization engages in projects that tackle major issues, among them hunger and homelessness.

Campus Compact works in three different areas: healthy futures, education and capacity building.

Education activities include mentoring, tutoring and improving education skills for K-12 students, to name a few activities. Some areas healthy futures is involved in include developments that impact primary and preventative healthcare in communities and areas that are “medically underserved” (areas that have a high elderly population, high infant mortality rates, high poverty rate, etc).

Capacity building, among other things, helps build volunteer as well as disaster preparedness and recovery programs.

MSU student Amy Haskell is working with Campus Compact.

Some of her jobs include processing check and credit card payments received during the Magic City telethon and writing training manuals for the Minot Area Community Foundation.

Campus Compact and MSU need more MSU students in all three areas. To get involved, students first fill out forms, available on a first-come, first-served basis. Capacity-building volunteers also interview with a non-profit or a government agency.

Campus Compact students must be U.S. citizens and must pass a criminal background check.

Once in the program, students must complete a minimum of 300 hours, after which they will receive money for tuition or student loans based on those hours. (For 300 hours the student will receive more than \$1,100, and for 675 hours the student will receive more than \$2,100).

They must complete the hours within a year’s timeframe.

The catch is that students will have to do monthly paperwork (including time logs and reflection statements), and must also be willing to learn new skills and serve the community.

For more information or to get involved, contact Beth Odahlen, 858-3177, or [beth.odahlen@minotstateu.edu](mailto:beth.odahlen@minotstateu.edu).

**... Ward**  
continued from page 4

**Rap:** Definitely be sure to check out Family Force 5’s “Christmas Pageant.” Also, Run DMC, Toby Mac, Snoop Dogg, and Ludacris have their own holiday tunes out there.

**Pop:** There are tons of pop artists who drop their own festive renditions of popular Christmas songs such as Mariah Carey, Chris Brown, Katy Perry and many others. I guess Justin Bieber would also fit in this category, but after all, this is college, so I’m pretty sure no one really likes him

still or even cares about his new Christmas album “Under the Mistletoe,” for that matter. [It would be totally awesome to see a huge mob of “beleibers” storm - and also “like” - the Minot State Red & Green page and then proceed to fill up the wall with posts saying otherwise to prove me wrong.]

Finally, I can’t end this article without including one of the best in Christmas music out there: The Trans-Siberian Orchestra.

Thanks to all of my readers, and have a very Merry Christmas!

**... PASC**  
continued from page 1

return that item to Memorial 230T. If you don’t make it past the tree, that’s fine. When you’re out holiday shopping, pick up some extra ornaments or lights,

garland, stockings, wrapping paper, etc. and bring the donated item by Memorial 230T.

The deadline for donations is Dec. 14, 2011. All donations will be dispersed to flood victims living in FEMA trailers, to help

bring some cheer to the holidays.

“We have many items already,” Turqoyz Rogahn, PASC president said. “It’s exciting to see people be passionate about this. I think a little holiday spirit is needed in Minot right now.”

# SELF DEFENSE WORKSHOP

TAUGHT BY DR. RICHARD SEKLECKI, PROFESSOR OF CRIMINAL JUSTICE

**JANUARY 19TH AND 26TH AT 6:00-7:30 PM  
IN THE PEDAGOGY LAB IN SWAIN HALL  
REGISTRATION DEADLINE IS JAN. 18TH OR JAN. 25TH  
REGISTER WITH A PARTNER IN THE POWER OR CALL LYNN AT 858-4047  
LOOSE CLOTHING AND TENNIS SHOES SUGGESTED  
FREE PIZZA AFTERWARDS! BRING YOUR OWN BEVERAGE!**

- DEVELOP BODY LANGUAGE TO
- AVOID BEING A VICTIM
- LEARN SIMPLE, EFFECTIVE
- SELF-DEFENSE TECHNIQUES
- BUILD YOUR
- SELF-CONFIDENCE
- LEARN TO BE
- PREPARED

SPONSORED BY:  
STUDENT SUCCESS CENTER  
AND THE POWER CENTER

APPROVED BY  
STUDENT GOVERNMENT

# Rotaract Club wraps up semester of service



Photo by Amber Penrose

Rotaract Club members (from the left) Eric Zitter, Jake Estenson, Amber Beggs, Anthony Anderson, Brandyn Hansen, Dan Hansen and Danya Flaten display children's winter clothing they collected during their "Giving Warmth the Heart" clothing drive. The clothing will be distributed to children whose families were affected by the flood. Previously this semester, the Club volunteered at the Norsk Høstfest, helped organize the "Rock the Leaves" benefit concert and removed debris from public property along the Souris River. The club's final project this semester will be sponsoring a "ShelterBox," a disaster relief kit containing a tent, blankets, clothing, medical supplies, tools and cooking gear. ShelterBoxes are assembled in the United States by "ShelterBox USA" for disaster areas around the world to jump start recovery. To assist the Rotaract Club in this project, contact Brandyn Hansen, club president, at [brandyn.hansen@my.minotstateu.edu](mailto:brandyn.hansen@my.minotstateu.edu).

## International Program opportunities

**Roy Whyte**  
*Staff Writer*

International travel is an opportunity of a lifetime an experience, you won't soon forget and something that students right here at Minot State University have the chance to take part in.

Over the past years, MSU has sent many students to different countries to study abroad and learn about new cultures. For students who have been thinking they would like to study abroad

or just wanted to learn more about it, right now is the perfect time to look into it.

The university offers many different types of exchanges and trips. Through partnerships with other universities, a Minot State student can change places with a student from an overseas university. MSU also has a program provider that has hundreds of available universities to visit.

Another option is school-chaperoned trips that run through the summer. This sum-

mer, students may choose from three available trips, one to Ireland and two different trips to Peru, one of which is for the Spanish language and the other one for nursing.

"Going on one of these trips is a life changing experience," MSU Global Education Coordinator Bethany Keusch said. "It does so much for you. It is a great resumé booster. You become a more diverse person with an extremely open mind and, if you're trying

**See Travel — Page 12**



Photo by Anthony Anderson

James Haff, sophomore, and Lacey Hein, Senior, work at a computer as they participate in the housing-shortage survey.

## Students seek solutions for N.D. housing shortage

**Anthony Anderson**  
*Editor*

Several Minot State University students are doing their part to combat the housing crisis in North Dakota that is becoming a larger and larger problem.

Students in Chelsea Starr's "Sociology Research Methods" class are running a statewide study to isolate specific problems with housing in the state.

Starr said she got the idea for the study after learning at a YWCA board meeting how overloaded services are in the state right now.

"Data needed to be gathered on how energy companies and the flood contributed to the housing shortage," she said. "You can't form the solution until you find what the problem is."

To gather the data, the students are contacting officials at housing agencies around the state, as well as social service agencies, emergency shelters, domestic violence shelters and mental health organizations. They are interviewing these individuals one by one to learn how the housing crisis affects each agency, and what

policies they use to cope with it.

After they are finished collecting the data, the students will compile it into a report for presentation to the North Dakota Lieutenant Governor, the N.D. State Legislature, and the N.D. State congressional delegation.

Starr thinks the students in the course are enjoying the experience. They tend to agree with her.

"I think it's a great cause," sophomore James Haff said. "I'm glad we can help like this."

Haff says that some of the calls he makes are very pleasant; others can be a bit trying. However, he said he deeply respects all of the individuals he has been working with.

"They really have a tough job," he said.

Also, since the interview lasts about half an hour, scheduling can be difficult.

"It's hard to find a time when you have time and they have time, [for the interview]," Haff said.

"It's a lot of work," senior Lacey Hein said, "but it really is good stuff. When you finish a call, you really feel like you have made a difference."

# Wrestling team has great potential

**Jamie Council**  
*Comm 281*

Minot State University wrestlers opened their season on Nov. 12, in Fargo, N.D. The Beavers are in their second year as a program here. This is a provisional year as MSU athletics are making the transition from NAIA to NCAA DII.

Last year, ten Minot wrestlers went to the 2010 National Qualifiers. Robert Herrera (125), the Outstanding Wrestler in the region, led the Beavers with 18 wins.

“We actually had a pretty good season [last year], but could have been a better finish to the season,” head wrestling coach Robin Ersland said.

Key returning wrestlers include junior Marcus Wilson (157), senior Wade Weppler (197), sophomore Luke Michaelson (174) and senior Deon Buhl (141). In their first year as MSU Beavers, Wilson went 14-20, Weppler, 6-8, Michaelson was 16-17, but led the team with 10 pin victories and Buhl was 15-22.

Ersland said freshmen Josh Douglas (125), Drew Spaulding (149) and Jaymes Stanley (165) look to be contributing factors this year.

Other additions to the team include a couple of transfers from junior colleges. However, they will be red shirting in this provisional year. By doing so, they can compete at the NCAA DII for two years.

Ersland sees potential in this year’s team.

“I think we’ll have a better team this year just because of the process,” he said. “The guys that

didn’t have experience last year will have it this year.”

Some team strategies may affect the outcome of this season. Being a provisional year, Ersland is red-shirting some key wrestlers from last year’s team in addition to the transfers to maximize the years they can compete in NCAA.

Jon Wilson (157) wrestled for the Beavers last year, but will be red-shirting this season to get one more year of experience.

“We are trying to give him three years at the NCAA DII level,” Ersland said.

National qualifiers Herrera and Matt Ruby are not wrestling this year, but will return to the team next year. Herrera has two years of eligibility left and Ruby has three years left.

“This year’s schedule is focused on sending as many wrestlers to the National Qualifiers as possible,” Ersland said.

Ersland has been at MSU since the program started in 2010. He is an experienced college coach. This year is his 28th year as a head coach at the collegiate level. Before becoming a Beaver, he coached at the University of Central Missouri, California University of Pennsylvania in CA, Penn, Northern Michigan University in Marquette, MI, McMurry College in Jacksonville, Ill., and was a grad assistant at University of Iowa.

“It’s a good group of guys that work hard. We’re happy with the group we got and as long as we can avoid injuries, which is hard in wrestling, I think we’ll have a pretty good season,” he said.

The team traveled to Fargo to compete in the North Dakota State University Open to open their season. Freshman Stanley was the only wrestler to place, taking sixth and finishing 6-3 for the weekend. The Beavers got a pair of wins from freshman Marcus Bausman (157) who went 2-2. Freshman Douglas, freshman Spaulding, and junior Weppler finished 1-2. Minot’s assistant coach, Richard Byrd, competed as an unattached wrestler in the tournament, finishing sixth.

On Nov. 19, the Beavers traveled to Moorhead, Minn. to compete in the Concordia College Open. Bausman (165) competed in the Freshman-Sophomore Division, went 3-0, and won his weight class. That was the only first place finish for the Beavers. However, Stanley (165) took fourth in the open division. Gifford (141) went 2-2 and took fourth for his weight class and Spaulding (149) went 3-1 in his class and took fifth in the Freshman-Sophomore Division.

The grapplers placed three individuals at the Minnesota State Moorhead Dragon Open Saturday. Wilson was the highest Beaver placewinner at fourth in the 157 pound weight class. Buhl was fifth at 141 with a 4-1 record, while Spaulding was sixth at 149.

The Beavers took on Jamestown College yesterday. Results were not known at press time.

A complete schedule and more information can be found on the MSU athletic page, [www.msubeavers.com](http://www.msubeavers.com).



Photo by Max Patzner  
**Lauren Safranski (No. 10) shoots, while Christina Boag (No. 50) looks on. Safranski had nine points and three steals in the Beavers’ loss to Southwest Minnesota State, 72-60.**

# Lady Beavers making headway

**Doug Richter**  
*Sports Writer*

Heading into December, the Lady Beavers are on a roll, winning their last three games. The team currently boasts a 5-4 record and looks to continue this hot streak throughout a busy December schedule.

Good things are happening for Minot State University. At a recent tournament in Billings, Mont., two Lady Beavers captured spots on the All Tournament Team. Katie Hardy, also named tournament MVP, and Carly Boag earned honors for their outstanding play. Hardy scored 31 points and collected 14 rebounds in two games, while Boag knocked down 26 points and grabbed 17 boards. The Lady Beavers were the only team at the tournament to go 2-0.

In recent home action, the Lady Beavers cleaned house

against Montana Tech, winning by 17 points. Tech’s defense was no match for the very efficient offense of the Lady Beavers, who were able to put up many uncontested high-percentage shots.

Earlier in the season at a tournament in Alaska, MSU lost to the University of Alaska-Anchorage, 63-87, but beat the University of Alaska-Fairbanks, 72-59.

In Bismarck Nov. 15, the Beavers beat the University of Mary, 76-65, but one week later lost a home game to the Marauders, 52-81.

On Nov. 17, the Beavers lost to Southwest Minnesota State University, 60-72, and on Nov. 19, fell to Augustana College, 55-66.

MSU has a deep bench and looks to use many players to spread out its game. Although they do not have as strenuous a  
**See Lady Beavers — Page 10**

# Gridders gained experience

**Doug Richter**  
*Sports Writer*

The 2011 MSU football season saw the Beavers grow as a team and gain valuable experience. MSU finished its season Nov. 17 in San Antonio, Texas. The Beavers went 2-8 in 2011 but

were able to take many positives out of this season’s campaign.

Head Coach Paul Rudolph said this season was filled with tons of emotion. He said the team did not always finish games the way they would have liked, but they gained a great

deal of experience from the schedule they played.

The Beavers had two NCAA Division 1 teams on the schedule. Despite losing both contests, they played well and the experience gained from playing that

**See Football — Page 12**



Goalie Wyatt Waselenchuk catches a puck during the Nov. 19 game at the Maysa Arena. MSU defeated NDSU, 10-2.

Photo by Amber Penrose

# Hockey at best, worst point

**Jamie Council**  
*Comm 281*

Minot State University's club hockey team is at its best and its worst at this point in the season in two categories. Playing-wise, they are at the top of their game. Their record is 10-5-2 and the team currently ranks 10th according to the ACHA Club Hockey Rankings, the highest the Beavers have been thus far this season.

On a non-playing side of club hockey, an unforeseen technical problem at the All-Seasons Arena has booted the team out of its home rink, causing scheduling, storage and, most importantly, funding issues.

The Beavers did work in the last weekend of play on Nov. 17, 19, and 20. The team went 3-0 in the games, defeating Williston 6-1 and North Dakota State University 10-2 and 9-2.

The first game against Williston was the most influential and had the most meaning to the team. This 6-1 win gave the team

momentum for the rest of the weekend.

"We were in a bit of a losing streak. We needed something to build our confidence," Wade Regier, Beaver hockey head coach said. "The first game was the most important, so that we could set the tone for the weekend."

Earlier in the season, MSU lost in a 4-6 upset to Williston on the road, so this game was a chance at a little revenge. Dan Lamb and Josh Rutherford led the Beavers with two goals and an assist on the night. The other two goals came from Cam McGeough and Jared McIntosh. McGeough and McIntosh also each had an assist. Riley Hengen tended the goal for the Beavers, making 19 saves and giving up only one goal.

The second game of the weekend was the first game against NDSU, resulting in a 10-2 blowout win. McIntosh, McGeough, and Zach Johnson scored two goals apiece for Minot. McIntosh also recorded an assist in addition to

his goals. Mitch Peeke scored a goal and led the team with 3 assists. Garrett Ferguson, Eric Herbel, and Michael Jordan scored a goal apiece for Minot, while Ferguson also put up an assist. Wyatt Waselenchuk tented the goal for the Beavers, making 28 saves and allowing two goals.

The second game against NDSU and final game of the weekend was pretty consistent with the first game, resulting in a 9-2 victory. While the score wasn't as high as the first game, it was evident the Beavers dominated NDSU and controlled the game. Herbel led the Beavers with a hat trick, scoring three goals in the game. Peeke added one goal and two assists for the Beavers. Ferguson, Rutherford, McIntosh, Danny Urban and Jordan each had a goal, with Ferguson and Rutherford recording assists as well. Lamb and Brett Fiddler led the Beavers in assists with two apiece. Riley Hengen tented the

See Hockey — Page 12

## Men defeat U of Mary

**Doug Richter**  
*Sports Writer*

The Minot State University men's Beavers basketball team scored its first win as a Division 2 program on the road Nov. 22, beating the University of Mary on their home court in double overtime, 92-88.

Big wins such as that look to carry the men's team and provide motivation as they play a tough schedule filled with away games and long road trips. The team was hoping to find its groove with a trip to Alaska, where they competed in the AT&T Jamboree this past weekend. The University of Alaska-Fairbanks Nanooks had other ideas, defeating the Beavers in game one, 77-83. The Beavers fell to University of Alaska-Anchorage, 40-82.

Earlier in the season, the

Beavers fell to Bemidji State, 45-74, and Southwest Minnesota State, 76-87.

Josh Johnson leads the Beavers, averaging 18.5 points a game. Yonas Berhe and Jonas Pollard, chipping in 14.0 and 13.9 points per game respectively, aid heavily in the team's offensive attack.

The team as a whole is getting after it in practice, improving every day. With the amount of travel hours being logged by the team, they will have plenty of time to bond and make a push to finish out the season in good fashion.

Beaver fans should clear their January schedules, as this is the only month with any men's home games. Jan. 13 and 14, along with Jan. 27 and 28, will be the only opportunities to watch the men live at home.

... Lady Beavers  
continued from Page 9

travel schedule as some teams, they will look to use their versatile bench to get them through

long stretches of games. The Beavers take on Valley City State at home Dec. 11 at 4 p.m. The team wraps up play Feb. 25-26 in Las Vegas.

WWW.SPICYPIEPIZZA.COM



MSU  
100 N Broadway  
701-852-PIES (7437)

### Need a Gift Idea?

Get a Spicy Pie Gift Pack! \$39.95

- ✓ T - Shirt
- ✓ Beverage Tumbler
- ✓ \$20.00 Gift Card

### See you at the Pie!



... Travel  
continued from page 8

to pick up a language, it is really the best way to do it.”

Keusch addressed some common misconceptions about the programs.

“Don’t be afraid,” she said.

... Football  
continued from page 9

level of competition, along with amazing playing atmospheres, provided many positives when they look back on the season.

A major positive Beaver players and fans can reflect on is the huge win over Black Hills State. The Beaver’s defense put together an amazing goal line stance to give the team its first home win as a Division II program. The

“Everyone thinks you need to know a language, but you don’t have to and everyone thinks that all of these programs are really expensive, but they don’t have to be. It all depends on the country you pick. You also don’t have to rearrange when you graduate. You can still do everything on

momentum gained from that game helped the team’s defense through the rest of the season.

“The season offered a great experience to play different places and geographical areas with nice venues and atmospheres,” Rudolph said.

He also said that his team really learned how to compete, and figured out the level they need to play at on a day-in day-out basis. According to the Beaver coach, this season they learned the

your original schedule.”

Registration for summer programs must be in to Keusch by Feb. 1, 2012. Registrations for next fall are due by Jan. 31.

Keusch invites students to stop by and talk to her in the International Programs office, first floor of the Student Center.

importance of playing hard every snap because, in football, every play can turn into a big score or shift the momentum. He feels the team can win games if they carry that attitude over into the next season.

Fans were able to see the team at home only three times in 2011. However, next season the Beavers will play at home six times and be a full member of the NSIC competing in the North Division.

... Hockey  
continued from page 10

goal for Minot this game, recording 31 saves and allowing only two goals.

“With a weekend with three games, I was pretty impressed with the way we played,” Regier said. “We were able to put a full 60 minutes in all three games, so we’re all excited that we were able to build off that confidence.”

While the team is happy about its success on the ice, it’s not enough to make the players forget about the disasters happening off the ice. The All-Seasons Arena, home to the Minot State University’s hockey team, is currently out of use due to a technical problem. This puts the Beavers at the MAYSA Arena, along with every other team in Minot. They

are also left without the luxury of a locker room or storage space for player and fan gear that they had at the All-Seasons.

Besides scheduling issues and being without a locker room, the move poses a more serious problem: funding. All the sponsor logos and banners, worth about \$30,000, were at the All-Seasons Arena. The move has resulted in the loss of some of those sponsorships. Being a club, rather than a varsity sport, hockey doesn’t receive funding from the athletic department, so loss of sponsors could be devastating for this program.

“It’s an extreme challenge being ‘not funded’ for a program such as hockey, that requires a lot of time, a lot of money and a lot of effort,” Regier said. “We depend heavily on sponsorships from the

community and businesses stepping up making donations. Plus, we require the boys to fundraise an enormous amount, so this move to the MAYSA has just put an extreme strain on our program because we’ve lost a couple sponsors and there’s going to be an added cost associated with switching rinks. It’s going to be a big challenge.”

Despite all this going on, the team continues to practice and train hard. They are doing more off-ice training due to the new scheduling issues. The Beavers will be back in home action this Friday at the MAYSA Arena when they take on the Dakota College at Bottineau Lumberjacks. The puck drops at 7 p.m.

For more information, check out the team’s website on Minot’s athletic page.

# Freezin’ For a Reason



Photo by Max Patzner  
MSU social work students (from the left) Anthony Dosch, Rachael Ritzke and Ashley Barczewski hold signs in the Town & Country Center parking lot for Freezin’ For a Reason. With snow on the ground and cold temperatures, students stood outside on Nov. 16 to raise awareness of homelessness and hunger, as well as to collect monetary donations and non-perishable food items.

**Writers needed at the Red & Green. Great pay! Stop by the office, Student Center 304.**

## Red & Green NEWSPAPER

A paper written by  
MSU students for MSU students



## INSIDE/OUT

### MSU's News and Feature Show

Thursdays, live at 5 P.M.  
shown again at 6:30 P.M.  
Fridays at 2:30 & 6:30 P.M.

### KMSU TV Channel 19

Produced by MSU Broadcasting students

