



**Minot State**  
**UNIVERSITY**

Our Place. Our Legacy. Our Vision.



## **PRESIDENT'S REPORT**

July 1, 2012 to June 30, 2013



DR. DAVID G. FULLER

*“Though I do not believe that a plant will spring up where no seed has been, I have great faith in a seed. Convince me that you have a seed there, and I am prepared to expect wonders.”*

— Henry D. Thoreau —

## PREPARED TO EXPECT WONDERS

In my inauguration speech 10 years ago, I referred to Thoreau’s line “faith in a seed” to express my faith in the potential of students, and my sense that we can expect wonders if we believe in them. My experience working with students reveals that they deserve our faith as individuals — all of them unique, with different interests and backgrounds, different ideas about learning, sharing a common sense of wonder and excitement about their future. Thoreau was a teacher, and I imagine that he, too, believed in the potential of his students.

Today, discussions about quality learning are drowned out with comments about educational productivity, often expressed as formulas for student success. I understand and support initiatives to improve productivity and to measure student success, but those priorities should not come at the expense of attending to learning, motivating and supporting students. It’s a useful reminder to take stock in quality learning, as we have done for nearly 100 years at Minot State University. Teaching is never easy, but we know that good teaching and student success come from our ability to listen carefully, show that we care, offer help, challenge students to work hard and to experience the joys of discovery and understanding. These are not far-fetched ideas. They are central to who we are.

I hear stories from students and graduates who tell me about MSU professors who made a difference in their lives. For 10 years, I have heard those stories and observed them in classrooms. Real student success depends on people who sincerely care about students and demonstrate their willingness to go beyond the call of duty. That’s what it takes. Admission scores, remedial training, uniform tuition, dual credit standards, and even waiver and scholarship plans should not displace our attention to quality learning and our faith in students.

There are many in our profession who sincerely care about individuals’ learning and growth. They are the people who make higher education worthwhile. I can point to actual people and practices right under our noses that show the wonderful impact we make one student at a time. Some who immediately come to mind include: Steve Hayton’s many hours after the workday ends helping students in computer science; Mikhail Bobylev’s countless hours mentoring and helping individuals with their research; Rick Watson’s special efforts to motivate and demonstrate the joys of learning, playing his guitar, reading poetry and befriending many; and Clarine Sandstrom revealing her unquestionable faith in students through kindness and support. Others who go out of their way to help students are: Laurie Weber in Financial Aid, Mark Timbrook in the Office of Instructional Technology; George Withus from Information Technology Center; Deb Wentz in my office; Ken and DeVera Bowles through their remarkable support of our choral students; Kevin Neuharth in our theater department; Scott Peterson in maintenance; Doreen Wald in Publications and Design Services. There are so many other people — too many to mention here — and programs that prove their commitment to quality learning and individual support.

They are the heart of higher education. For nearly 100 years, they and others continue to make Minot State University a premier regional university in the “great” Great Plains. It is not performance scores, rankings in popular magazines, amount of efficiencies and admission standards that qualify MSU as a premier university. Rather, it is the people and tradition of service to our students that continue to give me faith and anticipation to expect wonders every day. That’s why I have loved higher education for years, and certainly why I believe in Minot State University and the job we do.

And that’s why, 151 years after his death, Thoreau’s “faith in a seed” resonates now more than ever before.

—David Fuller, president

# MSU presidents were optimistic visionaries



Arthur Crane



William Clark



Asra Steele



Levi Beeler

*A*lthough subject to the authority of the State Board of Regents in Bismarck, the State Normal School at Minot was directed in its daily operations by its president. Over the last century, Minot State University has been guided by leaders with diverse backgrounds, but who shared a similar vision: to create an institution of excellence that serves its students and community with equal fervor and dedication.



George McFarland



Carl Swain



Casper Lura



Gordon Olson



H. Erik Shaar



David Fuller

## Arthur Crane

The groundbreaking for the State Normal School at Minot's initial building, known later as Old Main, was scheduled for Aug. 27, 1912. On the evening before the ceremony, Arthur Crane, a Carleton (Northfield, Minn.) College graduate, performed his first unofficial act. In the middle of the night, the 35-year-old, newly chosen president moved survey stakes 50 yards back. He disagreed on the building's location with State Normal Board member Martin Jacobson, who helped with the school's physical layout. Crane wanted it back from present-day University Avenue to accommodate future growth and took the necessary steps to ensure that.

1913-21



Crane possessed diverse talents. Although he had a poetic streak, he was a practical, resourceful man. An intellectual, an author, a gifted organizer, he had above all else the ability to inspire others. He could be forceful as well.

When the choice of school colors was made, Crane voiced his preference for red and green. The art faculty recommended three colors, but the president would not be swayed. He saw the young institution as belonging to the common people of the

state. The geranium's red and soft green symbolized to him the school's function to provide a better life for ordinary people. He said, "I don't care what colors you choose, just so they're red and green." In the early years of Minot's Normal School, each window of the main building had a box of geraniums.

Crane skillfully guided the school through social, cultural, economic and legal difficulties in its first days. When construction problems delayed the campus opening, he promptly sought another option. He appealed to the community, which provided the rent-free use of the newly constructed Minot Armory. The first term of the State Normal School at Minot began Sept. 30, 1913, in the armory. Its offices served as recitation rooms, and the basement housed the auditorium and gymnasium. Crane and the original faculty established the identity and traditions of the fledgling school. Students, faculty and staff often referred to him as "Father Crane."

In 1917, Crane received a 14-month leave of absence to pursue graduate education at Columbia University in New York. He returned to North Dakota in September 1918. However, before he could resume his presidential duties, the Surgeon General of the U. S. Army called him into service for World War I. Crane worked for the Army Sanitary Corps at Walter Reed Hospital in Washington, D. C., organizing rehabilitation work and vocational training for disabled soldiers. He returned to Minot's State Normal School for two months in 1921, before resigning to accept the presidency of the University of Wyoming.



1917  
1918-22

## William Clarke

When Arthur Crane departed in 1917 to pursue a graduate degree and wartime service, William Clarke, the only faculty member possessing a doctorate among the original 12, became the acting president. Clarke, the former supervisor of practice pedagogy and school management, was Model School director. He coordinated and directed all war service activities as well as all normal and training school operations. He combined his Model School role with that of the presidency until Asra Steele replaced him in 1917. He then replaced Steele in 1918 and later, Levi Beeler prior to George McFarland's taking office in 1922. During presidential voids, Clarke ensured that campus operations continued smoothly. Little credit is given to Clarke, when, in fact, he provided much-needed stability.

*The MSU campus c. 1913 – 14.*



## Asra Steele

The State Board of Regents appointed Asra Steele from the University of West Virginia's Department of Education as the first interim president in June 1917. Steele had a bachelor's degree from the University of Missouri and a doctorate from Clark University. During Steele's administration, several of Arthur Crane's improvements were realized. These included additions to the school's plant and the introduction of correspondence work under the Extension Department. Neither Steele's impeccable credentials nor his faithful effort to continue Crane's policies, however, could prevent his abrupt dismissal after only 10 months on the job. He angered local business people during a 1918 convocation with comments about the progress and financing of the First World War. It was a political dismissal during difficult times.

1917-18



## Levi Beeler

In May 1922, Levi Beeler of the University of Chicago assumed duties as president of Minot's Normal School. Professionally, he started as a high school principal in Stillwater, Minn. Beeler later completed a doctorate at the University of Minnesota. He was described as a scholar of strong personality and a "Gatling-gun talker." In 1908, he was appointed president of Henry Kendall College in Tulsa, Okla., which faced problems with its endowment, land management, enrollment and debt. The problems persisted, if not magnified, and trustees grew increasingly unhappy with Beeler. In 1909, he wrote, "The Trustees are very much dissatisfied because I have not secured endowments and buildings. So much so that I feel that I cannot longer remain here." He resigned and moved on.

Little is found in Minot State University's historical record concerning Beeler's term in office, with the exception of bids for the construction of Main's west wing. He also revised the Extension Bulletin about how correspondence study was to be offered. No student was allowed to take correspondence if he had not completed

1922



the ninth grade or its equivalent, and not more than a sixth of the work leading to a diploma could be taken in absentia. Each course consisted of 20 lessons, with a syllabus outlining the course. A final examination was administered at the Normal School or under the supervision of an approved person. By 1922, enrollment in the courses had climbed to 87 students. While it changed in scope and courses offered, correspondence has remained one of the institution's delivery methods.

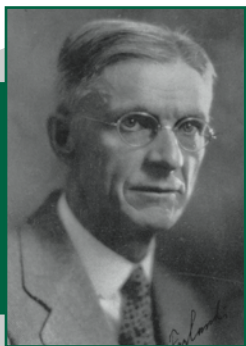
Both the Minot Daily News and the Ward County Independent reported without explanation the appointment of George McFarland, Williston City Schools superintendent, as the new Minot Normal School president in August 1922. When contacted by both newspapers, Beeler said "he had not been informed of the new appointment."

*Faculty c. 1916.*



## George McFarland

1922-38



George McFarland led the school through its two most trying decades, when economic depression and financial belt-tightening were paramount. Despite overwhelming adversity, this remarkable man, who was 64 when he assumed office in August 1922 and 80 when he died in 1938, managed to keep the school from foundering during the Great Depression.

McFarland had a long work history and a deep understanding of education on the Northern Plains. Several personality traits, including confidence, intelligence, sincerity, friendliness and empathy, contributed to McFarland's success. He was a natural public figure, who felt at ease whether conversing with individuals or addressing a large group.

Regardless of the problems facing the school, McFarland believed Minot State Teachers College's future held great promise. He displayed two attributes, optimism and sense of mission, in his Saturday evening radio talks on KLPM in the midst of the Great Depression.

The mission of the college, McFarland insisted, extended beyond teaching subjects and skills.

The president described his faculty as fulfilling many other roles in addition to their pedagogical commitments. He introduced extracurricular activities as valid to the community.

McFarland's response to the budgetary crisis facing North Dakota and MSTC in 1931 illustrates his flexibility and skill as an administrator. On two occasions, the governor summoned state college presidents to Bismarck, where he informed them of required budget cuts. For Minot, this meant drastic cuts in virtually all facets of college expenditures. McFarland returned home after the meetings determined to conform to the governor's demands and to ensure that his institution would survive. He gathered the college community to discuss the crisis. "I regret," he announced at the meeting, "to occupy a position in which some of these decisions must rest with me. I am likely to be under the necessity of ignoring individual disappointments in the interest of what my judgment may indicate is best for the school." In another speech, he softened this by stressing that whatever he did "to enable the college to carry out its objectives with the funds allowed" he would do "with the least possible disaster to individuals." To begin with, he pointed out, "every salary in the institution from the president to the part-time janitor has been reduced 10 percent." Moving his request to a loftier plane, McFarland summoned his troops to exhibit heightened seriousness, loyalty and commitment. In closing, the president admonished his colleagues to consider the larger picture, to ponder the magnitude of the economic crisis their

institution faced. If they did, McFarland believed, they would understand that "we are very fortunate indeed to be permitted to continue more or less indefinitely on the 10 percent reduction in salaries."

McFarland built Dakota Hall, a woman's dormitory, in 1930-31 during the first years of the Great Depression. Unlike the new Model School and president's house, which were built under New Deal programs, Dakota was funded with a \$150,000 bond, issued by the local dormitory holding association under a special act of the 1929 Legislature.

McFarland, a visionary, held strong beliefs. He understood and appreciated students and their activities. He believed women were equal to men. He admired teachers and learning. He believed in the importance of music.

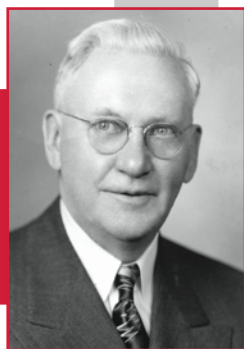
McFarland died unexpectedly in 1938. Under his tutelage, MSTC's enrollment increased from about 200 to 765, and it grew from a normal school, offering a two-year course, to a full-fledged college, offering four years of college work.



*Dakota Hall — c. 1931.*

## Carl Swain

At George McFarland's death in 1938, Charles Scott, director of the Training School, was appointed acting head. He served for three months until Carl Swain was appointed Minot State's next president.



1938-54

Swain graduated from St. Olaf College in Minnesota with a bachelor's degree. He later attained a master's from Columbia University Teachers College in New York. From 1920-23, he taught in the Education Department at Iowa State Teachers College in Cedar Falls, Iowa. In 1923, he became president of Mayville State Teachers College, where he remained for the next 15 years. During this period, he earned an LL. D. degree from Carleton College of Minnesota.

In 1941, the National Youth Administration built two frame structures on campus — the president's house and the Student Union.

During World War II, Minot State became home to the U. S. Navy's V-5 and V-12 programs. The former trained pilots, while the latter produced deck officers. Swain shared campus authority with U. S. Navy program director R. W.

Palda. Navy programs had a predetermined curriculum, and campus faculty provided the instruction. Navy support staff had offices in Old Main, Pioneer Hall and Dakota Hall. Flight training staff occupied the city's airfield.

After the war, the college phased out the Navy programs and returned to a conventional college curriculum. Swain was credited with three key contributions in the postwar years.

First, he separated administration from instruction on the organization chart. Second, he won approval for a liberal arts degree, broadening the school's mission beyond teacher education. This was a development occurring in colleges around the nation at the time. He also educated the college community about the key role the new G.I. Bill would have in higher education. Third, he emphasized the broader meaning of higher education. Colleges were character-building institutions, he said, committed to "the education of the whole man — physical, intellectual and spiritual."

Minot State undertook no new campus construction during World War II.



*President's House built in 1941.*

After the war, rising enrollments made expansion possible. In 1949, the Student Union was enlarged. Two years later, a health and physical building was completed, ultimately named Swain Hall.

Swain was enormously religious. He organized Monday and Wednesday convocations in the auditorium, with students given assigned seats. The dean of women took roll. In his Christmas greeting to the college in 1952, the president said that the holiday offered the believer a chance to find a savior from sin, to know God intimately and to discover a way to peace and good will.

The yearbook staff began sponsoring a beauty contest in 1951. Contestants appeared in swimsuits, street wear and evening gowns. Celebrity judges reviewed finalists' photographs and picked the winners. Over the next 20 years, contestants were judged on personality and talent in addition to beauty. The title "Miss Beaver" was later changed to "Miss Minot State College."

Swain retired in 1954.



*Swain Hall — c. 1960.*

## Casper Lura

Casper Lura was born and raised in Mayville. He completed his undergraduate degree at Mayville State Teachers College. He then taught junior high and high school in the small town of Taylor.

Lura later earned a doctorate from the University of Iowa in 1932. He joined Moorhead State's Education Department and served over the next 15 years as faculty member, dean of men and director of student affairs. In 1947, he became president of Mayville State Teachers College.

In 1954, Lura assumed the same position at Minot State Teachers College. Described as diplomatic and political, he oversaw significant growth during his 13 years of service.

1954-67



In the second year of Lura's tenure, enrollment achieved the 1,000-student milestone. The president quickly addressed the cramped library housed in Old Main since 1913. The facility could accommodate only 66 students. Nellie Swanson, who served as librarian from 1939 to 1963, recalled that only 16 inches separated the stacks. "I didn't dare gain a pound," she said. "And why the floor

didn't go down in that building I have no idea. Only the good Lord held it up."

A new facility, Memorial Library, was completed in 1959. It had a seating capacity of 250.

Additional dormitory space was added in 1960. Crane Hall, named after the school's first president, provided living space for 145 students. McCulloch Hall, a woman's dorm named after Hazel McCulloch, the last of the original 12 faculty members, housed the same number of students. The following year, Cyril Moore Hall, a math and science building, was added.

The college celebrated its 50th anniversary in 1963. The next year, the school's name was changed to Minot State College, reflecting an expansion of its academic offerings. It offered its first master's degrees in speech correction and education of the deaf.

A decade after Lura assumed control, enrollment reached 1,841. A new football stadium opened in 1964 with a seating capacity of 1,200. Another dormitory, Cook Hall, was added in 1965.

During the tranquil 1950s and '60s, fraternities and sororities dominated the social and political scenes on campus. Although they comprised only a third of the student body, the Greeks acquired a dominant position through control of student government.

During this period, the Cold War and Civil Rights Movement received scant attention in the campus newspaper, *The Red and Green*. This reflected the college's conservatism and isolation from the rest of the country.



*Library, Memorial Hall – c.1959.*



*Cyril Moore Science Center today.*



*C.P. Lura Manor.*

During the Vietnam War, no demonstrations or draft card burnings occurred at Minot State. The only revolt involved James Vizas, a dissident English professor. He and a small cohort of students burned Lura in effigy on the school's front lawn. Vizas' novel, "The Tender and the Green," documented his grievances. An underground newspaper, "The Independent," sprang up at the same time, only to fold after a couple of issues.

Despite the turmoil of the 1960s, Lura's tenure at Minot State was largely trouble free. He retired in 1967.



1967-92



## Gordon Olson

Gordon Olson succeeded Lura in 1967. Born in Almont, Olson grew up in a farming and ranching family. After high school, he spent a year at Jamestown College before enlisting in the U. S. Army during World War II. After his discharge, he completed a bachelor's degree at Dickinson State Teachers College.

Olson taught briefly in Belfield and Amidon and eventually became superintendent of schools in Bucyrus. He later earned master's and doctoral degrees from the University of North Dakota. He returned to Dickinson State to serve as chair of the Department of Education and Psychology. He later became a dean and vice president for academic affairs.

Before being hired as president of MSTC, he stressed to the Board of Higher Education that growth was the No. 1 item on his agenda.

"I told the board that if they were going to continue with a single mission — that being teacher education — I wasn't interested in the job," Olson said.

For Olson, growth meant additional programs, larger enrollments and better

facilities. As an administrator, he was fiscally conservative and politically astute. He saw himself as the CEO of a small business.

The new president faced his first crisis when the Mouse River flooded Minot in the spring of 1969. Over 12,000 residents evacuated their homes in the central third of the city. The floodwaters remained for 40 days, with total damage to the city estimated at \$10 million.

The Minot State campus wasn't flooded, but several nearby fraternities and sororities had water in their basements, and students had to evacuate. Olson canceled classes for a week, and students helped local residents sandbag and vacate their homes. A 9-foot-high causeway was built on Broadway that served as a north-south link during the crisis. When classes resumed, students commuted to campus via shuttle buses.

The 1970s brought two experimental programs to campus. The New Program involved an intensive study of English and the humanities, modeled after a program at the University of California-Berkeley. The Experimental College stressed that students should take responsibility for their own educations. Both programs folded by the middle of the decade.

The student body began featuring more older students who returned to campus to complete degrees, expand employment opportunities or change careers. To accommodate them, Pioneer Hall was converted to married housing, and the Campus Heights family complex was added in 1984.

The multipurpose Minot State Dome was built in 1980. The 153,000-square-



*MSU Dome.*

foot arena cost \$6.3 million to construct. The 9,600-seat Dome boasted the largest capacity of any arena in the state.

When he became president, Olson and his family lived on campus. He felt like a pastor living in a parsonage next to the church.

"There was never a day off," he said. "I remember a Thanksgiving when we were sitting at the dinner table, and the doorbell rang. A couple of people wanted to get into the dorm. There were many requests like that, and we always accommodated them."

Since the early 1970s, Olson saw the need for a larger library to serve a growing student body. He worked tirelessly on the project, and his patience paid off in 1992. The college unveiled a \$7.7 million facility, appropriately named the Gordon B. Olson Library.



*Gordon B. Olson Library – c. 1992.*

“This is definitely a high honor, and I’m still alive,” Olson joked at the building’s dedication.

During the 1980s, the student body clamored for university status to add value to their degrees. Olson surveyed 2,000 colleges and universities in the nation and concluded that it had a case.

“We’re more qualified than a good many of them right now,” he said.

The school became a nominal university for a month in 1983, when it was renamed Dakota Northwestern University. But to become a true university, academic units were reorganized into five colleges — arts and sciences, business, education and human services, nursing and graduate school. In 1987, the school first became the State University of North Dakota-Minot (SUND-M) and then Minot State University.

When he retired, Olson had achieved the growth he had envisioned. Enrollment had increased from 2,000 in 1967 to 3,700 in 1992. Undergraduate majors had been added in nursing, social work and criminal justice. Graduate offerings had increased from one to 10. To enhance the arts, the MSU Amphitheater was built at the start of the decade, and Hartnett Hall was added in 1973. Lura Manor, the school’s first coed dorm, was completed in 1986.

## H. Erik Shaar

Raised in Pennsylvania, H. Erik Shaar majored in music at West Chester State College. During a stint in the U. S. Air Force, he played cello in its symphony

orchestra. He earned a doctorate from The Catholic University of America in Washington, D. C., in 1964.

He began his academic career at Northern Michigan University, where he taught music. He next served as dean of fine arts and humanities at Chicago State University. In 1975, he transferred to Shippensburg University to become vice president of academic affairs. He then became president of Lake Superior State University in Sault Ste. Marie, Mich., in 1986.

When Shaar became president of Minot State University in 1992, he proposed a three-point agenda. He wanted to modernize campus buildings, forge partnerships beyond the city of Minot and increase the institution’s endowment.

He said he wanted Minot State “to become more of a university than the present university we are.”

To achieve the first goal, he directed the renovation of several campus buildings, including the Dome, Moore Hall, Hartnett Hall, Old Main and Student Union.

Memorial Library was vacant, so college officials looked to Washington, D.C., for funding. The U.S. Department of Agriculture agreed to fund the Institute for Agricultural and Rural Human Resource Development, a project that brought the university’s human services departments together under one roof. The remodeled, 90,000-square-foot building, renamed Memorial Hall, was completed in 1996.

Next, Shaar extended campus boundaries by launching an online delivery program, the first in the state. He also forged a partnership with the college

1992-2004



at Bottineau. Formerly, Bottineau had an affiliation with North Dakota State University.

Finally, the Old Main Society was established in 1993 to recognize cumulative contributions to the university. In 1995, the MSU Development Foundation received a \$1 million contribution from the General Electric Co. on behalf of David C. Jones and his wife, Lois. Both had attended Minot State in the 1940s. Jones is a retired U. S. Air Force general and former chairman of the U.S. Joint Chiefs of Staff. By the end of his tenure in 1992, Shaar had increased the school’s endowment to \$11 million, a 700 percent increase from the start of his presidency.

Shaar was an avid supporter of the arts while at MSU. An accomplished cellist, he performed with the Minot Symphony Orchestra and, on occasion, wielded the conductor’s baton. His wife, Jane, was a practicing photographer and artist, working in oils and watercolors.

Throughout his time at Minot State, Shaar marveled at the cordial relationship between campus and community.

“I don’t think there’s one anywhere in the country as good,” he said.

## David Fuller

A Nebraska native, David Fuller attended Hastings College, where he majored in English literature. After college, he worked in retail for six years. He later earned a master's degree from Kearney State College and a doctorate from the University of Iowa.

He then taught English for 13 years at Northern State University in Aberdeen, S. D. He also served as English Department chair, director of the writing center and graduate dean.



2004-  
present

In 1996, Fuller became vice president for academic affairs at Northland College in Ashland, Wis. In 2000, he assumed the same position at Wayne State College in Nebraska. Four years later, he became the president of Minot State University.

In his inaugural address, he rejected the business model of higher education because its results can't be neatly quantified. Instead, it deals with the intangible, spiritual and ineffable, he said. Borrowing from 19th-century poet Henry David Thoreau, he likened educators to horticulturalists who plant seeds and nurture growth.

"That is what we do in higher education — nurture," he said. "If students are nurtured, they have the potential for growth. Then we should expect wonders."

To help students grow, MSU added degree programs in energy economics and finance, early childhood education and athletic training. It has also created the Severson Entrepreneurship Academy in the College of Business.

To encourage global education, the university expanded its International Programs Office and developed partnerships with universities in Norway, Denmark, Sweden, China, South Korea, Turkey and Vietnam. It also has agreements with three tribal colleges in the state. A Multi-cultural Center for international students is located in the Student Center.

Minot State has also improved its support services for students. These include the POWER Center and Center for Engaged Teaching and Learning. These programs have contributed to increases in retention and graduation rates.

In athletics, Minot State advanced to NCAA Division II status and joined the prestigious Northern Sun Intercollegiate Conference. The department also added women's soccer and men's wrestling to its menu of sports. Herb Parker Stadium is undergoing an upgrade, featuring artificial turf, improved lighting, new

seating, \$4 million press box and video scoreboard.

Swain Hall, the physical education facility, underwent a \$13 million overhaul. Attached to Swain Hall and the Dome, a Student Wellness Center was built to contribute to the university's mind, body and spiritual wellness. Student fees funded the 60,000-square-foot facility. Total cost of the center was \$13 million.

Fuller also spearheaded the transition from coal-fired boilers to geothermal heating and cooling on campus.

The 2011 Mouse River Flood tested the mettle of the MSU president. The flood destroyed or damaged 4,100 structures and forced 11,000 Minot residents out of their homes. Damage to Minot and the Mouse River Valley totaled \$1.2 billion.

A total of 117 MSU faculty and staff lost homes or suffered damage. About 500 rental units near campus were devastated.

MSU's 12-foot-high dike on University Avenue held back seven feet of water. An American Red Cross shelter in the MSU Dome housed 300 evacuees. National Guardsmen and FEMA workers lived in campus residence halls. Fuller's leadership and bold actions kept the university dry and offered respite to the entire community.

Fuller announced his retirement effective June 2014.



Swain Hall – 2010.



Student Wellness Center – 2012.

# Year in REVIEW

## July 2012

- 6 Minot State officially becomes a member of the Northern Sun Intercollegiate Conference, the premier NCAA Division II conference in the country.
- 9 The North Dakota Center for Persons with Disabilities receives a \$533,000 federal grant to assist the North Dakota Senior Medicare Patrol program to combat Medicare fraud.
- 12 MSU becomes a full member of NCAA Division II, finishing a four-year application process.
- 25 Matt Murken is hired to lead the men's basketball program. The school's 15th head coach, Murken replaces Peter Stewart, who resigned earlier in the month.

## August 2012

- 14 MSU and Dickinson State host Energy Impact Solutions symposia, in which researchers present views on the state's changing landscape.

## September 2012

- 3 \$13 million MSU Student Wellness Center celebrates its grand opening.

- 3 Beaver Brew Coffee shop, designed and operated by MSU's student-run Entrepreneurship Club, hosts its grand opening.



- 4-5 Minot State earns three Player of the Week awards in the first week of the season in women's soccer, women's golf and men's golf.

- 6 Stars of Hope bring the National 9/11 Flag, which flew over the World Trade Center wreckage site, to MSU's Old Main for unfurling and public viewing. Destroyed in the attack and repaired by disaster survivors, the flag contains pieces of American flags from all 50 states, exemplifying American resilience.



- 11 MSU Alumni Association bestows Golden Awards to Ray Giacoletti ('85), Paul Soderberg ('65) and Kristi Berg ('95).

- 16 MSU is named a Military Friendly School for the fourth consecutive year by G.I. Jobs.

## October 2012

- 3 MSU Sociology Club hosts an open forum with political candidates before the November election.
- 15 MSU's Rural Crime and Justice Center receives a \$300,000 grant to combat domestic violence, sexual assaults and stalking on campus.

## November 2012

- 13-15 The Native American Cultural Awareness Club sponsors a campus-wide cultural celebration.
- 14 Minot State football places nine student-athletes on the All-NSIC team.
- 17 Students from the Fargo, Bismarck, and Minot Student Social Work Organizations hold their annual "Freezin' for a Reason" to help raise awareness of the homeless in each community.



**19** MSU soccer player Zoe Fisher finishes a season of firsts with a Daktronics All-Central Region first-team pick. She is also named the NSIC Tournament MVP and is a first-team all NSIC pick. She also helps the Beavers to their first-ever NSIC Tournament title and a trip to the NCAA Division II National Tournament.



## December 2012

- 1** Minot State women's basketball team rallies from an 11-point deficit to knock off rival University of Mary 74-73 in the program's first-ever NSIC game in Bismarck. Carly Boag's effort earned her NSIC Player of the Week.
- 11** Mikhail Bobylev, associate chemistry professor, receives a patent for his new method of synthesizing agrochemicals and pharmaceuticals. He first applied for the patent in 2008.

## January 2013

- 5** MSU men's basketball knocks off nationally ranked St. Cloud State for the program's first win over a ranked opponent. It is a big weekend as MSU earns its first NSIC road sweep of the season.
- 11** MSU alumnus John Greenslit ('60) shares his life's journeys in Distinguished Alumni Series.



- 15** U.S. News ranks MSU Online Business Programs among the nation's best.
- 23** MSU soccer player Tara McPartland is one of 80 Northern Sun Intercollegiate Conference players to receive the Myles Brand All-Academic-with-Distinction Award.

## February 2013

- 5** MSU alumna Brenda Maus Mormon ('76) wins prestigious N.D. Outstanding Geography Teacher Award. Mormon teaches at Central Elementary in Wahpeton.
- 18** Minot State baseball enters the National Collegiate Baseball Writers Association Division II Central Region poll for the first time in school history, peaking at No. 8.
- 25** Track and field standout Kirk Capdeville earns a spot on the U.S. Track & Field and Cross Country Coaches Association All-Region team, making the top five in the region in the indoor pole vault.

- 26** MSU receives CEO Cancer Gold Standard™ Accreditation, recognizing MSU's commitment to healthy employees and family members.

## March 2013

- 4** MSU is named to the 2013 President's Higher Education Community Service Honor Roll for its commitment to volunteerism and civic engagement. It is the only university in North Dakota to earn this award.

- 5** Former Minot State player and coach Ray Giacoletti helps Gonzaga to its first-ever Associated Press No. 1 ranking in basketball. Giacoletti was a two-year captain and a four-year player for the Beavers. He was later named Drake University head coach.
- 5** Micah Bloom, assistant art professor, debuts his film "Codex," which documents Minot's post-flood struggle among nature, humanity and the printed word.



- 6** MSU Men's Club Hockey Team wins its first American Collegiate Hockey Association National Championship.
- 8** "Pennies for Patients" fundraising competition, sponsored by MSU Residence Life staff, raised over \$3,800 going to the Leukemia Lymphoma Society. This year's total tops 2012 efforts by 52 percent.



# Year in REVIEW

**20** MSU Development Foundation receives \$36,000 from Minot Sertoma Club for scholarships and voice lab equipment for the Department of Communication Disorders.



**22** MSU women's basketball player Carly Boag is named Daktronics All-America Honorable Mention, becoming the first Beaver to make an All-America team at the NCAA Division II level. She was also named to the Central Region and Northern Sun first teams.



**26** Minot State brothers Jon and Marcus Wilson are named to the NCAA Division II All-Academic Honorable Mention team.

**27** MSU Student Social Work Organization sponsors "Creating a Culture of Change" symposium.

## April 2013

**3** MSU Sociology Club's town hall meeting examines affordable housing shortage in Minot, featuring a guest panel of university and community representatives.

**8** MSU leadership students host "Make a Difference Week," in which one group collects canned goods for a local pantry, while a second group collects toiletries for Minot's Domestic Violence Crisis Center.

**9** MSU's Student Government Association selects Laurie Geller, Lisa Borden-King and John Girard as the 2012-13 Professors of the Year.

**14** Minot State sophomore golfer Kowan O'Keefe wins the NSIC individual men's golf title, becoming the first Beaver to win an individual title in the conference. He qualifies for the NCAA Division II Central/Midwest Super Regional.

**19** 300 saxophonists descend on MSU's campus for the Region 3 North American Saxophone Alliance Conference. The campus and community are treated to three days of band, jazz ensemble and symphony concerts featuring national guest artists.

**24** MSU chemistry graduate Braden Burckhard travels to Washington, D. C., to present post-flood mold research with Mikhail Bobylev, MSU associate chemistry professor. Burckhard is one of 60 students chosen nationally to go to Capitol Hill.



**26** 30th-Annual Alumni Association Gala is celebrated at The Grand with a record setting year. This year, over \$60,000 is raised for student scholarships.

**26-27** The MSU Native American Cultural Awareness Club sponsors its annual Spring Honor Dance and Powwow Celebration, which showcases Native American dancers and drum groups from the region. Over 1,500 people attend annually.



# CELEBRATING 100 YEARS

**30** MSU's Great Plains Center for Community Research and Service ends operations due to federal cutbacks.

## May 2013

**8** Three faculty members, Warren Gamas, Ernst Pijning and Clarine Sandstrom, and two staff members, Jason Spain and Doreen Wald, receive MSU Board of Regents Achievement Awards for dedicated service to Minot State.

**10** MSU's Centennial Celebration is officially announced at commencement. As a major Centennial project, the Power of 100 challenges the campus, community, alumni, friends, businesses and organizations to complete a service project in honor of MSU's 100 years of service!



**10** MSU honors more than 760 graduates at 2013 commencement. State Sen. Karen Krebsbach ('62) and student Anthony Anderson are guest speakers.



**16** Linda Olson, Division of Humanities chair, accepts the 2013 North Dakota Governor's Award for the Arts on behalf of the North Dakota Art Gallery Association, which she oversees. The award is presented by the North Dakota Council of the Arts.

**23** Jen Dixon becomes the first MSU student-athlete to earn a first-team All-America honor at the NCAA Division II level. She is also named the Central Region and Northern Sun Intercollegiate Conference Player of the Year as well as the first Capital One Academic All-American.



**23** Abbey Aide becomes the first Minot State athlete to compete at the NCAA Division II Track and Field Championships. Her qualifying pole vault jump is 12 feet 6.25 inches.



**28** College for Kids kicks off its 25th year of educational summer camps for children ages 6-12.



## June 2013

**10** MSU breaks ground for a new Herb Parker Stadium, which starts a 14-month build that will establish the stadium as one of the finest facilities in North Dakota.



**17** The Dakota Chamber Music Institute begins, attracting participants from North Dakota, Minnesota, South Dakota and Canada. The Institute began in 1996.



**30** The U.S. Track & Field and Cross Country Coaches Association announces MSU men's and women's track & field teams earned 2013 Division II All-Academic Track & Field Teams distinction as a result of earning a cumulative team GPA of 3.00 or higher.

# Scholarships



## COLLEGE OF ARTS AND SCIENCES

### BIOLOGY

Harvey and Judith Poppinga Scholarship

### CRIMINAL JUSTICE

Criminal Justice Scholarship Endowment  
 Dan Draovich Scholarship Endowment  
 Gary Holum Scholarship Endowment  
 Lambda Alpha Epsilon Criminal Justice Scholarship

### HUMANITIES

Art Scholarship Endowment  
 Division of Humanities Scholarship Endowment  
 Frank Hornstein Memorial Scholarship Endowment  
 Freshman Theatre Arts Award  
 Harold and Verna Aleshire Scholarship Endowment  
 Harvey and Arlone Twyman Scholarship (Art)  
 Harvey and Arlone Twyman Scholarship (Literature)  
 Harvey and Arlone Twyman Scholarship (Theatre)  
 Helen Hoar Memorial French Scholarship Endowment  
 Myrtle Nordwick Cantana Scholarship Endowment



### MATH & COMPUTER SCIENCE

Agnes and Ray Ladendorf Scholarship Endowment  
 Blaine B. Kuist Memorial Scholarship Endowment  
 Frank and Olga Bauman Scholarship Endowment  
 Integrity Viking Funds Computer Science Scholarship Endowment  
 Math and Computer Science Scholarship Endowment  
 Robert L. Holmen Scholarship Endowment  
 Xcel Energy Scholarship Endowment

### MUSIC

Bert Skakoon Music Scholarship Endowment  
 Dr. Ira - Paul Schwarz Scholarship Endowment  
 Dr. Joseph M. and Jackie Hegstad Scholarship Endowment  
 Evelyn Sampson Music Scholarship Endowment  
 Frances Leach - Blanche Lynch Memorial Scholarship  
 Gary Stenehem Organ Scholarship Endowment  
 Gay Gidley King Scholarship Endowment  
 Harvey and Arlone Twyman Scholarship  
 John and Patricia Strohm Music Scholarship Endowment  
 Lyle C. Hanson Scholarship Endowment  
 Mike Berg Scholarship Endowment  
 Minot Symphony Association Scholarship Endowment  
 Music Division Scholarship Endowment  
 Northwest International Music Festival Scholarship  
 Ralph Wallin Keyboard Scholarship Endowment  
 Robert O. "Red" Wuttke Scholarship Endowment  
 Ruth Schell Overholser Endowed Fellowship  
 Ruth Schell Overholser Scholarship Endowment  
 Sally Thomas Violin Scholarship Endowment

### SCIENCE

Agnes and Ray Ladendorf Scholarship Endowment  
 Blaine B. Kuist Memorial Scholarship Endowment  
 Clinton and Adlyn Morgan Scholarship Endowment  
 Cyril Moore Scholarship Endowment  
 Division of Science Scholarship Endowment  
 Frank and Olga Bauman Scholarship Endowment  
 Glenn Bonness Scholarship Endowment  
 J. Spencer Overholser Scholarship Endowment  
 Kevin and Merri Jo Connole Scholarship Endowment  
 Ruth and Charles Hoffman Botanical Scholarship Endowment  
 Xcel Energy Scholarship Endowment

### SOCIAL SCIENCE

Dr. N.M. Lillehaugen History Scholarship Endowment  
 Frances Bane Crockett Scholarship Endowment  
 Paul Morrison Scholarship Endowment  
 Social Science Division Scholarship Endowment  
 Virginia P. George Scholarship Endowment



## COLLEGE OF BUSINESS

### BUSINESS

Aas Family Scholarship Endowment  
 Accounting Scholarship Endowment  
 Adelaide and Eleanor Johnson Scholarship Endowment  
 American Bank Center Scholarship  
 Baldwin and Shirley Martz Accounting Scholarship  
 Ben and Theresa Wald Scholarship Endowment  
 Brady Martz & Associates Scholarship  
 Bremer Bank Scholarship  
 Clint Severson and Conni Ahart Scholarship in memory of Mary Marley  
 College of Business Mentor Scholarship  
 College of Business Scholarship Endowment  
 Dacotah Bank Scholarship  
 Dale D. Atwood Scholarship Endowment  
 David and Dolly Gowan Scholarship Endowment  
 Don L. Barber Memorial Scholarship Endowment  
 Doris A. Slaaten Scholarship Endowment  
 Dr. Richard C. Walker Scholarship Endowment  
 Dr. Richard Schlapman Scholarship Endowment  
 E. James McIntyre Scholarship Endowment  
 Eide Bailly, LLP Scholarship  
 F. Bruce and Diane Walker Scholarship Endowment  
 First International Bank & Trust Scholarship  
 First Western Bank & Trust Scholarship  
 Integrity Viking Funds Business Scholarship Endowment  
 J. Bernard Busse Scholarship Endowment  
 Jan Barlow College of Business Scholarship Endowment  
 Janis Ann Dislevy Trust Endowed Scholarship  
 John and Leslie Coughlin Scholarship Endowment  
 Lee Badertscher Memorial Scholarship Endowment  
 Luther and Diann (Witham) Hanson Scholarship Endowment  
 Ove Jorgensen Merit Scholarship Endowment  
 Pat and Mary Kay Jones Scholarship Endowment  
 Pearl Stusrud Scholarship Endowment  
 Peoples State Bank Scholarship  
 Richard L. Muus Business Scholarship Endowment  
 Robert and Ilze Sando Scholarship Endowment  
 Roger Mergenthal Scholarship Endowment  
 United Community Bank Scholarship  
 Wells Fargo College of Business Scholarship

## COLLEGE OF EDUCATION AND HEALTH SCIENCES

### ADDICTION STUDIES

George Shipley Addiction Studies Scholarship Endowment

### PSYCHOLOGY

Dr. Richard Sheldon Psychology and Addiction Counseling Scholarship Endowment



### SOCIAL WORK

Jim Wahlberg Social Work Scholarship Endowment  
 Kay Erickson Memorial Scholarship  
 Sarah Martinsen Student Social Work Organization Scholarship Endowment  
 St. Joseph's Community Health Foundation Scholarship in Honor of the Sister's of St. Francis

### COMMUNICATION DISORDERS

Edna Gilbert Scholarship Endowment  
 Hearing and Training Center Scholarship Endowment  
 Lunday Scholarship Endowment  
 North Dakota Speech, Language and Hearing Association Scholarship Endowment  
 Sertoma Club of Minot Scholarship Endowment  
 Susan Haanstra Elsom Memorial Scholarship Endowment

**EDUCATION**

Adelaide and Eleanor Johnson Scholarship Endowment  
 Bernadine H. Kunkel Scholarship Endowment  
 Don and Joyce Anderson Scholarship Endowment  
 Edith Carpenter Rose Scholarship Endowment  
 Elementary Education Scholarship Endowment  
 Glenn Bonness Scholarship Endowment  
 Harvey and Judith Poppinga Scholarship  
 Hazall D. Johnson Memorial Scholarship Endowment  
 Helen Gaheen Myhra Scholarship Endowment  
 John F. and Veronica Grimes Scholarship Endowment  
 John Henry and Josephine Marie Huesers Scholarship Endowment  
 Margaret Ann Brooks Memorial Scholarship Endowment  
 Naomi E. Adams Scholarship Endowment  
 Nels T. and Oline Blikre Scholarship Endowment  
 Ole and Sarah Joraanstad Scholarship Endowment  
 Physical Education Academic Scholarship Endowment  
 Wilhelmina Thompson Scholarship Endowment

**NURSING**

Betsy Nokleby Scholarship Endowment  
 Dean's Award - Fabricius-Steinle Scholarship Endowment  
 Department of Nursing Alumni Scholarship Endowment  
 Dr. Elizabeth Ann Pross Scholarship Endowment  
 Dr. Richard E. Dormont, MD, Nursing Scholarship Endowment  
 Emma L. Misner Nursing Scholarship Endowment  
 Evelyn R. Nielsen Scholarship Endowment  
 Francis Svec Scholarship Endowment  
 Gunnar Solberg Scholarship  
 Halvor and Orma Nesheim Nursing Scholarship Endowment  
 Hazel B. Berve Trust Scholarship  
 Helen Chatfield Shurr Scholarship Endowment  
 Joan Love Christianson Nursing Scholarship Endowment  
 Keith and Elema Cunningham Scholarship Endowment  
 Leona R. Rubbelke Memorial Scholarship Endowment  
 Lois Bellet Williams Nursing Scholarship Endowment  
 Loretta F. Holub Scholarship Endowment  
 Maloney Educational Trust Scholarship  
 Margaret Bruce Scholarship  
 Mark Ronde Memorial Scholarship  
 Minot Moose Lodge Scholarship Endowment  
 Nels T. and Oline Blikre Scholarship Endowment  
 Otto R. and Irene. E. Johnson Scholarship Endowment  
 Patrick Kelly Muus Memorial Nursing Scholarship Endowment  
 Patty Lou Pietsch Trzpuć Memorial Scholarship Endowment  
 Roger Drobash Nursing Education Scholarship Endowment  
 St. Joseph's Community Health Foundation - Mabel Meng Scholarship  
 Tracy Petersen Snyder Scholarship Endowment  
 Yvonne Falstad Hoover Nursing Scholarship Endowment

**SPECIAL EDUCATION**

Bane-Sather Scholarship Endowment  
 Dr. Ronald E. Archer Memorial Scholarship Endowment  
 Elsie May Deeter Hearing Impaired Scholarship Endowment  
 Florence Lake Scholarship Endowment

Frances V. Leach Scholarship Endowment  
 Hooterville Flion Lions Edwin R. Hovrud Memorial Scholarship  
 Ruth E. Loucks Special Education Scholarship Endowment  
 Sertoma Club of Minot Scholarship Endowment  
 Special Education Scholarship Endowment

**GENERAL**

Alumni Scholarship Endowment  
 American Association of University Women Scholarship Endowment  
 Beverly G. and Ruth Blowers Scholarship Endowment  
 Bobbie Williams Scholarship Endowment  
 Burger King Scholarship Endowment  
 Charles A. Wiley Memorial Scholarship Endowment  
 Dell M. Clarke Memorial Scholarship Endowment  
 Delta Epsilon Phi-Lucille Whitt Scholarship Endowment  
 Dr. and Mrs. C.P. Lura Scholarship Endowment  
 Dr. Joel A. Davy Memorial Scholarship Endowment  
 E.R. Manning Scholarship Endowment  
 Edith L. Barrett Memorial Scholarship Endowment  
 Emma S. Brynjolfson and Grace W. Brynjolfson Scholarship Endowment  
 Frank and Peggy Linha Scholarship Endowment  
 Galen Brown Scholarship Endowment  
 General David C. and Lois M. Jones Scholarship Endowment  
 Gertrude M. "Tillie" Eck Scholarship Endowment  
 Gordon B. Olson Scholarship Endowment  
 Grant and Ruth Norem Scholarship Endowment  
 Hazel McCulloch Scholarship Endowment  
 Howard Randall Scholarship Endowment  
 Hugh Family Scholarship Endowment  
 James A. Sjol Memorial Scholarship Endowment  
 Jerome Wrahlstad Memorial Scholarship Endowment  
 John and Ethel Score Scholarship Endowment  
 John and Lucille Decker Scholarship Endowment  
 June E. (Steinke) Votaw Scholarship Endowment  
 Kenneth G. and Frances L. Huso Scholarship Endowment  
 Kevin Michael Hill Scholarship Endowment  
 Lt. Col. Charles Drake Poole Scholarship Endowment  
 Marie Torgerson Scholarship Endowment  
 Mary Ann Walizer Scholarship Endowment  
 Minot Model Alumni Association Scholarship Endowment  
 Minot Quota Club Scholarship Endowment  
 Minot State University Staff Senate Scholarship Endowment  
 Montana Dakota Utilities Scholarship  
 ND Texas Hold'em Poker Championship Scholarship Endowment  
 NDCPD Access Scholarship Endowment  
 Nell E. Boozenny Sander Scholarship Endowment  
 Nels and Edna Solheim Scholarship Endowment  
 North Dakota Fire Chiefs' Scholarship  
 Orvald J. Bjerken Scholarship Endowment  
 Plum Valley Women's Scholarship Endowment  
 R.J. Doebler Family Memorial Scholarship  
 Ralph Hubbard Memorial Scholarship Endowment  
 Ray and Alice M. (Cooper) Hovey Memorial Scholarship Endowment  
 Ray and Ingeborg Atwood Memorial Scholarship Endowment  
 Richard and Sally Jenkins Scholarship Endowment

Robert and June Marsh Scholarship Endowment  
 Roger and Jeanette Christ Scholarship Endowment  
 Sakura Restaurant Scholarship  
 Sue Cree Memorial Scholarship  
 The Brigadier General Jerome T. Hagen (RET.) Military Member  
 Scholarship Endowment  
 The Native American Scholarship Endowment  
 Theodore and Nan Monson Scholarship Endowment  
 Tom and Mary Probst Family Scholarship Endowment  
 Verendrye Electric Cooperative Scholarship Endowment  
 Westlie Scholarship Endowment  
 William Joseph Coming Hay Scholarship Endowment  
 Wylie and Kathy Hammond Native American  
 Scholarship Endowment

## HONORS

Philip and Barbara Fallis Scholarship Endowment

## ATHLETICS

Aufforth/Marean/Coleman Scholarship Endowment  
 Beaver Booster Athletic Scholarship Endowment  
 Bert Leidholt Athletic Scholarship Endowment  
 Clyde A. "Stretch" Nelson Scholarship Endowment  
 Cole Altringer Scholarship Endowment  
 Douglas G. Lockrem Memorial Scholarship Endowment  
 George Kaczor Athletic Scholarship Endowment  
 George Mellem Athletic Scholarship Endowment  
 Hank Hettwer Scholarship Endowment  
 Herb Parker - Parker Men Scholarship Endowment  
 Jerome "Wheaties" Peterson Memorial Scholarship Endowment  
 Jim Thorpe Memorial Scholarship Endowment  
 Ken Becker Athletic Scholarship Endowment  
 Kevin and Leisa Harmon Scholarship Endowment  
 L.M. "Bud" Funk Memorial Athletic Scholarship Endowment  
 Larry Fiedler Scholarship Endowment  
 M&S Concessions Athletic Scholarship  
 Maynard and Jeanne Sandberg Scholarship Endowment  
 McNally Family Scholarship Endowment  
 Merle "Willie" Becker Scholarship Endowment  
 MSU Athletic Hall of Fame Scholarship Endowment  
 Robert Deardurff Scholarship Endowment  
 Rod and Happy Romine Scholarship Endowment  
 Rotary Club of Minot Scholarship Endowment  
 Vence Elgie Athletic Scholarship Endowment  
 Wes Luther Athletic Scholarship Endowment  
 Wiley Wilson Athletic Scholarship Endowment  
 Zach Anderson Wrestling Scholarship Endowment

## ACADEMIC PROGRAM ENDOWMENTS

### CENTER FOR EXTENDED LEARNING

Dr. Jerome Borgen Endowment

### COLLEGE OF ARTS AND SCIENCES

Arts and Science Endowment  
 Janet M. Wentz Music, Theater, and Art Memorial Endowment

### Chemistry

Dr. Arnold Johnson Chemistry Equipment Memorial Endowment

### Geology

Bob and Kathy Mau Endowment

### Music

Jeanne M. Sandberg Music Endowment  
 The Theresa and Ben Wald Organ Preservation Endowment

### Science

General Motors

### COLLEGE OF BUSINESS

Accounting Department Endowment  
 Bob and Kathy Mau Endowment  
 College of Business APEX & Vision Fund  
 College of Business Building, Equipment and Furniture Endowment  
 Doris A. Slaaten COB Student Development Endowment  
 Roger Looyenga Leadership College of Business Endowment

### COLLEGE OF EDUCATION AND HEALTH SCIENCES

#### Communication Disorders

Department of Communication Disorders and Special Education  
 Endowment

#### Special Education

Elsie May Deeter Endowment  
 Special Education Endowment

### NDCDP

NDCPD Endowment

### ATHLETICS

Athletics Endowment

### LIBRARY

Earth Science Library Endowment  
 Esther M. Clausen Library Endowment  
 Library Endowment  
 Lola Carpenter Library Book Endowment

## FACULTY ENDOWMENTS

### COLLEGE OF ARTS AND SCIENCES

Earth Science Faculty Development  
 Endowment  
 Wallace H. Stockman Social Science Faculty  
 Development Endowment

### COLLEGE OF BUSINESS

Janis A. Dislevy Endowed Chair  
 JoAnn K. Linrud COB Faculty Development Endowment

### COLLEGE OF EDUCATION AND HEALTH SCIENCES

Deaf Program Faculty Development Endowment  
 Medical Arts Foundation Sabbatical  
 Speech Language Pathology Faculty Development Endowment ■



# Establishing a Scholarship

Creating a named scholarship through the Minot State University Development Foundation assists students and leaves a legacy to Minot State University. It is also a meaningful way to honor family and friends.

The first step in establishing a scholarship is to determine whether you would like to establish an “endowed” scholarship or an “annual” scholarship:

## ■ Endowed Scholarships

Endowed scholarship funds are designed to be permanent and perpetual and can be created with gifts totaling a minimum amount of \$5,000, contributed in full at the outset or with an initial commitment that is added to over time until

the endowment level of \$5,000 is reached. The principal of the fund is invested to produce income, and an annual award is made to a student/s. The principal remains untouched, so the endowment can last into perpetuity.

## ■ Annual Scholarships

Annual scholarships can be established with an outright gift of any amount. Unlike an endowed scholarship described above, an annual scholarship is not a permanent fund and is awarded only as long you (or others) choose to contribute to the fund.

As a scholarship donor, you choose the name of the scholarship as well as the criteria. The Office of Advancement staff is available to help you create the criteria for your scholarship. Endowed and annual scholarships at Minot State are awarded to deserving students based upon area of interest, geographical origin, leadership potential, merit, financial need, academic achievement and/or other criteria.

Typically, a selection committee carefully reviews the scholarship applications submitted by students and selects the most deserving recipient(s) based on the donor-established criteria.

Contributors of a scholarship fund are notified annually when the scholarship recipient(s) has been selected and are informed of the name, as well as the amount of the award. Recipients often write a thank you note to the donor, and in some cases, the recipient and donor are able to meet. ■



# Donors



Alumni and friends continue to provide financial assistance through annual donations for MSU students and the university. These contributions are vital for a solid future for Minot State. Cash donations, endowments, gifts of property, bequests, annuities and trusts all are vehicles to match the dreams of our donors with the needs of our students. Gifts can be made conveniently at [www.MinotStateU.edu/alumni](http://www.MinotStateU.edu/alumni) or by contacting the Advancement Office at 701-858-4243 or 800-777-0750 ext. 4243.

## LIFETIME HONOR ROLL OF DONORS

### LEADER

**\$1,000,000+**

Elsie Mae Deeter Estate  
David C. Jones  
Clinton Severson and Conni Ahart  
Robert O. Wuttke Estate

### FOUNDER

**\$500,000 - \$999,999**

Anonymous  
Bremer Bank  
Gertrude Eck Estate  
Gary and Jenette Nelson  
Chuck and Madge Westlie\*  
Doris Slaaten

### BENEFACTOR

**\$250,000 - \$499,999**

Glen Bonness\*  
City of Minot  
Eric Clausen  
ING Foundation  
Roger R. Odell\*  
Xcel Energy/ Xcel Energy  
Foundation

### CORNERSTONE

**\$100,000 - \$249,999**

Robert\* and Marilyn Anderson  
Anonymous  
Anonymous  
Bernadine Kunkel Estate  
Dell Clarke\*  
Janis A. Dislevy  
Donna J. Weinrebe/Trust  
First Western Bank and Trust  
Frances L. Huso Estate

Fraternal Order of the Eagles

#2376

Gunnar Solberg Trust  
Martha Hansen\*  
Jack H. Hoeven  
Thelma A. Hugh\*  
I. Keating, Inc.  
Ove W. Jorgensen\*  
Ardyth Kenner  
Leona Rubbelke Estate  
Agnes E. Linha\*  
Roger and Ann Looyenga  
Minot Elks Lodge No. 1089  
Minot Public School District #1  
Nita Weinrebe Trust  
Sertoma Club of Minot  
St. Joseph's Community Health  
Foundation  
Tom and Frances Leach  
Foundation Inc.  
Trinity Health  
Wells Fargo - Minot  
Tom and Janet\* Wentz

### BUILDER

**\$50,000 - \$99,999**

Agnes Kongsli Revocable Trust  
Anonymous  
Anonymous  
David and Myrna Blackstead  
Brady, Martz & Associates  
Lola Carpenter\*  
Elsie Cunningham  
John\* and Lucille Decker  
Blaine and Kathy DesLauriers  
Evelyn Sampson Estate  
First International Bank & Trust

Louise E. Frazer\*

Gay G. King Estate  
Grand Hotel  
Helene Fuld Health Trust  
Hester B. Johnson Trust  
Jim and Karen Jensen  
June Marsh Estate  
MSU Alumni Association  
Jim McIntyre  
Minot Daily News  
Montana Dakota Utilities - MDU  
Nan W. Monson Estate  
J. Spencer Overholser\* and Ruth  
Schell-Overholser  
Prairie Partners  
R.J. Doebler Trust  
Ray Rude\*  
Reiten Broadcasting, Inc./KXMC-  
TV, Channel 13  
SRT Communications, Inc.  
Maynard H. Sandberg  
Robert Sando  
Agnes G. Shurr  
Edna M. Solheim\*  
The Heritage Singers  
Tom and Judy Swanson  
US Bank of Minot  
Don and Deb Wahus  
Gordon H. Westlie\*  
Ben\* and Theresa Wald

### OLD MAIN

**\$15,000 - \$49,999**

Lynn W. Aas  
Harold\* and Verna Aleshire  
Jay and Dyanne Altringer/IMM  
American Legion

Anderson, Wade, & Whitty, PC  
Rory and Toni Anderson  
Anonymous  
Anonymous  
Orlin and Millie Backes  
John W. Barrett\*  
Lenny and Karen Behm  
Ted and Joan Brinkman  
Dale D. Brown  
Bill and Diana Christianson  
Coca-Cola Bottling Company  
West, Inc.  
John and Leslie Coughlin  
DAV - Trench Rat Dugout #456  
Daniel R. Delaney  
Delta Epsilon Phi-Lucille Whitt  
Scholarship Endowment  
David and Myrna DeMers  
Don Bessette Motors, Inc.  
Wallace and Iris Eckmann  
Eide Bailly LLP  
Farstad Oil Inc.  
Grace Fisher  
Florence Lake Estate  
David and Nancy Fuller  
Don C. Gackle\*  
Virginia Geesaman  
Virginia J. George\*  
David and Dolly Gowan  
Grace Brynjolfson Estate  
Great Tomato Festival  
Gwen & William Howard  
Family Fund  
Donald Haga  
Harry's Tire Service  
Harvey & Arlone Twyman Trust  
Vernon M. Haddeland

Brynhild Haugland*	Karen K. Krebsbach/Krebsbach Realty	Tim and Laura Mihalick	Signal Realty, Inc.
Shirley Hintz	Glendon M. Kriese	Jeff and Peggy Miller	Robert E. Skabo
Holiday Inn	Tyrone Langager and Rita Curl-Langager	Minot Banking Association	Sleep Inn
Loren and Melissa Holub	JoAnn K. Linrud	Minot Lions Club	Darryl Smette
Mel and Yvonne Hoover	Lowe's Printing, Inc.	Minot Model Alumni Association	Trygve A. Solheim*
Richard Hovey*	Gary M. Luedke	Minot Moose Lodge No. 822	Roger W. Sorenson
Howard Huesers	Thelma B. Lund	Minot Restaurant Supply	John and Jodi Stewart
Don and Sherry Hummel/Burger King	Wes and Donna Luther	Minot Symphony Association	Al and Marjorie* Strong
Betty Iljana	Lyle C. Hanson Estate	Richard and Bernie Muus	Thompson-Larson Funeral Home
Integrity Viking Funds	McC Gee, Hankla, Backes & Dobrovolny	Tom and Gloria Myhra	Tollefson's Retail Group
Investors Real Estate Trust	Mabel & Ethel Maloney Education Trust	Myrtle N. Canata Trust	Robert K. Torgerson
L. Robert Jacobson	Margaret Bruce Estate	Naomi E. Adams Trust	Margaret Totdahl
Jerome's Collision Center	Baldwin and Shirley Martz*	Kelly and Maria Nesheim	United Community Bank of North Dakota
Adelaide Johnson	Mary Ann Brosnahan Estate	Paul Ness	Dorothy A. Van Sickle
Ken and Marcia Johnson	Mattson Construction Co.	Gordon* and Carley Olson	Verendrye Electric Coop.
KMOT-TV	Bob and Kathy Mau	Orvald J. Bjerken Estate	Western ND Golf, Inc.
Patricia T. Kaald	Medical Arts Clinic	Rod Romine	Westlie Motor Co.
Marilyn Kemper*	Medical Arts Ed & Science Foundation	Rotary Club of Minot	James Westlie
Kiwanis Club of Minot		Ruth E. Loucks Estate	James* and Connie Williams
Howard D. Klug/El Rancho Motor Hotel		Nell E. Sander	
Gene and Judy Krebs		Dave R. Schmitz	
		Mark and Carol Schnabel	
		H. E. Shaar	* Indicates Deceased

## LEGACY SOCIETY

The Minot State University Legacy Society recognizes the thoughtful generosity of those who have made a planned gift to the MSU Development Foundation to benefit Minot State University. Membership is open to anyone making a deferred or a planned gift, such as bequests, charitable trusts, charitable gift annuities and life insurance.

Mary A. Anderson•	Dr. Robert and Jo Ann Garaas Skabo	Glendon M. Kriese	Marv and Barb Semrau
David and Myrna Blackstead	Virginia Geesaman	Neil and Jean Lasley•	Doris Slaaten•
Ted and Joan Brinkman	Martha Hansen*•	Frank and Peggy Linha*•	Edna Solheim*
Eric Clausen	Ryan and Barb Henry	Barbara A. Myhre•	Mary L. Soukup•
Virginia M. Coughlin*	Shirley Hintz	Robert and Patricia Nelson	Al and Marjorie* Strong
John D. Decker*	Jack Hoeven	Videll Nordmark	Basil C. Talley
Elsie May Deeter*•	James and Evelyn Horne*	J. Spencer* and Ruth Overholser•	Alice Warner*
Janis A. Dislevy	Gary and Carol Hovdestad•	Clay Rein	Donna Jane Weinrebe*
Gertrude Eck *•	Genevieve W. Hutmacher•	Maynard H. Sandberg	Nita Weinrebe Trust*
Ruth N. Fossum*	Betty Iljana	Robert N. and Ilze R.* Sando	Chuck and Madge Westlie*
Don Gackle*	Ken and Judi Kitzman•	Yvonne L. Schultz	Donald L. Wilhelm

• Charter Members \* Deceased

## PRESIDENT'S CLUB

Since 2008, Minot State University has recognized its most generous annual donors by welcoming them into the President's Club. Membership in the President's Club is open to all donors making annual contributions totaling \$1,000 or more to any area of campus. Membership must be renewed each year.

### INDIVIDUALS

Dave and Kathy Aas	Ken and Lona Anderson	Janice L. Barlow	John M. Brey
Lynn W. Aas	C. R. Arneson	Chuck and Leslie Barney	Ted and Joan Brinkman
Bev Alex	James and Kelly Artz	Mary Lou Bertsch	Dale and Vonnie Brown
Jay and Dyanne Altringer	Patrick and Amy Artz	David and Myrna Blackstead	Frank and Valerie Bruels
Bucky and Linda Anderson	Clara J. Ayers	Steve and Barb Blikre	Arden and Carol Butts
	Jon and Karla Backes	Kevin and Dione Bohl	Rich and Vicky Campbell

Owen and Catherine Carlson  
 Bill and Diana Christianson  
 Kevin and Merri Jo Connole  
 John and Leslie Coughlin  
 Charles D. Cunningham  
 Elsie Cunningham  
 Tyrone and Rita Curl-Langager  
 Josh and Kayla Dascher  
 Pamela J. Davy  
 David and Myrna DeMers  
 Blaine and Kathy DesLauriers  
 Janis A. Dislevy  
 Larry and Holly Eidsness  
 Donna Elgie  
 Mike and Tammy Elgie  
 Brian and Amanda Erickson  
 Grace Fisher  
 Mike and Vicki Fitzmaurice  
 Dean and Sara Frantsvog  
 Thomas and Judy Fredericks  
 David and Nancy Fuller  
 David and Dolly Gowan  
 Vernon and Marlene Haddeland  
 Wylie and Kathy Hammond  
 Luther and Diann Hanson  
 Linda Hardy  
 Kevin and Leisa Harmon  
 Jerome Harstad  
 Rick and Andrea Hedberg  
 Joe and Jackie Hegstad  
 Patrick and Kim Hennessy  
 Timothy D. Henry  
 Jack and Raziye Hoeven  
 Robert and Patricia Holmen  
 Loren Holub  
 Thomas G. Holum  
 Joan R. Holum  
 Howard Huesers  
 Peter Hugret and Judith Howard  
 Don and Sherry Hummel  
 Dick and Sally Jenkins  
 Jim and Karen Jensen  
 Adelaide Johnson  
 Bradley and MaryAnn Johnson  
 Ken J. Johnson  
 Christopher Jundt  
 Paul and Patricia Kaald  
 Jeff and Risa Kanavas  
 Howard D. Klug  
 Lenore Koczon and Jay Weintraub  
 William A. Koering  
 Tom and Debra Konecny  
 William W. Koponen  
 Brekka E. Kramer  
 Matt and Kelly Kramer

Gene and Judy Krebs  
 Karen K. Krebsbach  
 Doris Langager  
 David M. Leidholt  
 Betty A. Lewis  
 Chris and Denise Lindbo  
 JoAnn K. Linrud  
 Darrel and Teresa Loftesnes  
 Roger and Ann Looyenga  
 Mark and Judy Luther  
 Wes and Donna Luther  
 W. Dean and Velma Marmon  
 Mark D. Mattson  
 Jim McIntyre  
 Patrick W. McNally  
 Stuart Melby and Karen  
 Pocha-Melby  
 Tim and Laura Mihalick  
 Jeff and Peggy Miller  
 Jim Montgomery  
 Jeffrey J. Nelson  
 Kelly and Maria Nesheim  
 John and Cheryl Nilsen  
 Carley V. Olson  
 Linda A. Olson  
 Harvey and Judith Popinga  
 Michael and Laure Prochaska  
 Harold E. Randall  
 Jason L. Rohrer  
 Rod Romine  
 Judy Ross  
 Scott and Linda Ross  
 Paul and Renae Rudolph  
 Maynard H. Sandberg  
 Janet Sandeen  
 Nell E. Sander  
 Robert Sando  
 Arlene Saugstad  
 Edward and Bonnie Schmitz  
 Edward and Linda Schnaible  
 Marv and Barb Semrau  
 Clinton Severson and Conni Ahart  
 Luella Shjerve  
 Joe Siefried  
 Robert E. Skabo  
 Doris Slaaten  
 Darryl Smette  
 Jason and Catherine Spain  
 Jock and Lacey Stevick  
 John and Jodi Stewart  
 Terry R. Summers  
 Orlan Tollefson  
 Roger and Michelle Tollefson  
 Robert K. Torgerson  
 Bill and Kara Triplett

Ronald and Avis Tvedt  
 Todd and Heidi Van Dusen  
 Dorothy A. Van Sickle  
 Jean Velenchenko  
 Mike Vig  
 Larry and Edwina Wahlund  
 F. Bruce and Diane Walker, Jr  
 DuWayne and Karen Walz  
 Richard K. Westlake  
 Gary and Kim Weydahl  
 Robert Wheeler  
 Lorraine J. Willoughby  
 Kevin and Renae Yale  
 Erika and Andrea Zaman

## ORGANIZATIONS

Allstate Insurance -The Kim Albert  
 Agency  
 American Bank Center  
 Augustana Lutheran Church

Gwen & William Howard  
 Family Fund  
 Hess Corporation  
 Hight Construction  
 I. Keating Furniture World  
 Integrity Viking Funds  
 Investors Mgmt. & Marketing,  
 Inc.  
 Investors Real Estate Trust  
 Jerome's Collision Center  
 Jim Artz Insurance  
 MDU Resources Foundation  
 Maxson Law Office, P.C.  
 Michael A. Lucy Agency, Inc.  
 Mindt Construction, Inc.  
 Minot Convention & Visitors  
 Bureau  
 Minot Daily News  
 Minot Guaranty & Escrow, Co.  
 Minot Junior Golf Association



Behm Energy, Inc.  
 Brady, Martz & Associates  
 Bremer Bank  
 Copperhead Corporation  
 Dacotah Bank  
 Dakota Dental Health Center  
 Davison Larson Architects  
 EAPC Architects  
 Eide Bailly LLP  
 Farstad Oil  
 Fiberglass Specialties  
 First Cable Advertising  
 First International Bank & Trust  
 First Western Bank and Trust  
 Grand Hotel

Minot Model Alumni Association  
 Minot Restaurant Supply  
 Minot Symphony Association  
 Monarch Products Company  
 Montana Basement Solutions  
 Mowbray & Son Plumbing &  
 Heating, Inc.  
 MSU Beaver Boosters  
 Newkoma Services and Rentals  
 Newnan Outdoor Advertising  
 North Dakota Port Services, Inc.  
 Northern Trophy and Engraving  
 Northwest Building Improvement  
 Overhead Door Company  
 Papa Murphy's

Peoples State Bank  
 Power of the Purse  
 Real Builders, Inc.  
 Reiten Broadcasting, Inc.  
 Rolac Contracting  
 Sakura Sushi Buffet, Inc.  
 Sertoma Club of Minot  
 Sleep Inn  
 Souris Valley Dental Group  
 Sports on Tap  
 St. Joseph's Community Health  
 Foundation  
 Taney Engineering  
 Tecta America Dakotas  
 The Heritage Singers  
 Thompson-Larson Funeral Home  
 Tires Plus  
 Tollefson's Retail Group  
 Town & Country Insurance  
 Agency, LLC  
 Twin Oaks Resort  
 United Community Bank of  
 North Dakota  
 Wells Fargo-Minot  
 Western Agency Inc.-Minot  
 Western ND Pro-Am  
 Western Steel & Plumbing  
 Xcel Energy Foundation

## MSU EMPLOYEES

Bev Alex  
 J. Erik Anderson  
 Nathan Anderson  
 Brent A. Askvig  
 Judith R. Bacon  
 Caren Barnett  
 Chuck Barney  
 Linda E. Benson  
 Kristi-Ann L. Berg  
 Lynda K. Bertsch  
 Ann Beste-Guldbog  
 Lisa Borden-King  
 Penny Brandt  
 Kelly P. Buettner-Schmidt  
 Shawn Chaffin  
 Shirley Cole-Harding  
 Mike Colecchi  
 Merri Jo Connole  
 Rita Curl-Langager  
 Sara M. Deutsch  
 Lilah S. Diederich  
 Terry F. Eckmann  
 Alan G. Ekblad  
 Lisa L. Eriksmoen

Patricia A. Fedje  
 Joseph Ford  
 Dean A. Frantsvog  
 Thomas M. Froelich  
 David G. Fuller  
 Kylee B. Geer  
 Cheryl Gerard  
 Sheila Green Gerding  
 Carlen J. Gilseth  
 John Girard  
 Shanette R. Haarsager  
 Linda Haider  
 Diann E. Hanson  
 Kevin S. Harmon  
 Leisa L. Harmon  
 Donna M. Harvey  
 Holly I. Hassler  
 Rick Hedberg  
 Jennifer L. Hefter  
 Richard P. Heit  
 Andrew J. Heitkamp  
 Catherine M. Horvath  
 Anton A. Huether  
 Korie Huettl  
 Joseph C. Jastrzembski  
 Dick Jenkins  
 Bethany Keusch  
 Kathryn C. Kilroy  
 Deanna B. Klein  
 Lenore M. Koczon  
 Kevin L. Kvale  
 Sheila J. Latham  
 Paul W. Lepp  
 Michael Linnell  
 JoAnn K. Linrud  
 Amy Lisner  
 Teresa M. Loftesnes  
 Linda R. Madsen  
 Lesley C. Magnus  
 Kate D. Marshall  
 Wesley T. Matthews  
 Devin McCall  
 Janna McKechnie  
 Chad McNally  
 Stuart A. Melby  
 Annette L. Mennem  
 Mary E. Mercer  
 Jeffrey A. Meyer  
 Jeff B. Miller  
 Melanie R. Moore  
 Timothy L. Morris  
 Matt P. Murken  
 Jolene K. Nechiporenko  
 Jack M. Nelson

Jeffrey J. Nelson  
 Trisha M. Nelson  
 Susan Ness  
 Cheryl Nilsen  
 Anne M. Nordgaard  
 Neil Nordquist  
 Gordon R. Olson  
 Linda A. Olson  
 Nancy R. Pearson  
 Steven C. Peterson  
 Walter Piehl  
 Diane Pierson  
 Karen E. Pocha-Melby  
 Jacqueline Reep-Jarmin  
 Wade D. Regier  
 Barbara Rings  
 Neil Roberts  
 David Rochholz  
 Nicola J. Roed  
 Brenda K. Roedocker  
 Gary J. Ross  
 Lisa M. Roteliuk  
 Paul J. Rudolph  
 Christina M. Rust  
 Rebecca J. Ruzicka  
 Linda Schaefer  
 Orlene Schroeder  
 Toni D. Schwartz  
 Richard Seklecki  
 Marv Semrau  
 Margaret E. Sherve  
 Celeste D. Simmons  
 Seinquis Slater  
 Eileen Solberg  
 Jason Spain  
 Melissa J. Spelchen  
 Jerry Stai  
 Becky B. Strotheide  
 Steven J. Swenson  
 Connie Teets  
 Janan Thom  
 Mark J. Timbrook  
 Roger D. Triplett  
 William J. Triplett  
 Bonnie R. Trueblood  
 Jay L. Wahlund  
 Doreen L. Wald  
 Terry J. Wald  
 Karen Walz  
 Kristen M. Warmoth  
 Laurie E. Weber  
 Darla W. Weigel  
 Deb Wentz  
 Brock Wepler

Rosie J. Winczewski  
 Tammy J. Wolf  
 Renae A. Yale

## BEAVER BOOSTERS INDIVIDUALS

Bev Alex  
 Kory Anderson  
 Les and Debbie Anderson  
 Donald and Joyce Anderson  
 Pat and Amy Artz  
 Brent and Stacy Askvig  
 Dean and Norma Bachmeier  
 Orlin and Millie Backes  
 Roger and Connie Backes  
 Bruce and Ollie Baker  
 Michael Bakk  
 James and Marvel Bakken  
 Larry and Debbie Baklenko  
 Jeff Balentine  
 Larry and Caren Barnett  
 Brian Bartz  
 Richard Becker  
 Doug and Patti Bengson  
 Linda Benson  
 Eric and Kristi Berg  
 Steve and Barb Blikre  
 Bill Blore  
 Kevin and Dione Bohl  
 Duane and Jeanne Brekke  
 Bruce Bremer  
 John Brey  
 Ted and Joan Brinkman  
 Marc and Jancy Brisson  
 Frank and Val Bruels  
 Gene and Pat Buen  
 Kevin Burckhard  
 Rich and Vicky Campbell  
 Kurt Carlson  
 Jake Carstensen  
 Gary Cederstrom  
 Shawn Chaffin  
 Mike and Diane Chilson  
 Chris and Ali Clemenson  
 Charles Colby  
 Joseph Colloca  
 Kevin and Merri Jo Connole  
 Josh and Kayla Dascher  
 Bill Demars  
 David and Myrna DeMers  
 Blaine and Kathy DesLauriers  
 David and Marsha DesLauriers  
 Dustin and Sara Deustch  
 Brian and Shelby Difonzo



John and Rita Doering  
 John and Sara Dufner  
 Bill and Celesta Edwards  
 Kelly and Lisa Eggl  
 Mike and Tammy Elgie  
 Ty and Lyndsi Engstrom  
 Brian and Amanda Erickson  
 Eldon and Penny Erickson  
 Eugene and Mary Ellen Ersland  
 Chipper and Renee Farrell  
 Dave and Patti Fedje  
 Joe Ford  
 Dusty Forthun  
 Duane and Carol Foss  
 Robert Frantsvog  
 Dean and Sara Frantsvog  
 David and Nancy Fuller  
 Brad Gallier  
 Dale and Ann Gehring  
 John and Arlene Gerding  
 David and Sheila Green Gerding  
 Ray and Kim Giacoletti  
 Jason and Heather Gillihan  
 Tim Greenheck  
 John Greenslit  
 Vernon and Marlene Haddeland  
 Mike Hady  
 Travis and Brenda Halvorson  
 Wally and Winnie Hankla  
 Kevin and Leisa Harmon  
 Jerome Harstad  
 Jason Harvey  
 Holly Hassler  
 John and Terri Hauge  
 Kelly and Roxann Hayhurst  
 Rick and Andrea Hedberg  
 Andy and Deb Heitkamp  
 Dennis and Marvel Helgeson  
 Brandyn Hendrickson  
 Kenneth Hennix  
 Terry and Gail Hjelmstad  
 Jerry Hoiland  
 Bob and Karen Holmen  
 Robert and Pat Holmen  
 Lloyd and Ellen Hornbacher  
 Brian and Janet Hornecker  
 Steven Hunter  
 Jeff and Cheri Hurd  
 Paul Isaacson  
 Dick and Sally Jenkins  
 Randy Johnson  
 Duane and Roberta Johnson  
 Ken and Marcia Johnson  
 Jim Jonas

Shane and Tara Jordan  
 Blaine King  
 Jay and Michelle Klabunde  
 James and Deanna Klein  
 Malenius Klimpel  
 Jonn Knecht  
 Bill Koering  
 Ken and Fran Kostad  
 Blaine Kotasek  
 Steve Kottsick  
 Bob Kraft  
 Tony and Marla Kulig  
 Wade and Mary Kynett  
 Chris and Rachelle Lamoureux  
 Dan and Jeri Langemo  
 Virginia Leidholt  
 Dave Leidholt  
 Alice G. Leonard  
 Gary and Sherry Leslie



Betty Lewis  
 Greg and Brenda Limke  
 Dick and Jean Limke  
 Michael and Nichole Linnell  
 Steven Lipp  
 Theodore Livesay  
 Darrel and Teresa Loftesnes  
 Hugh Long  
 Dale and Cindy Ludwig  
 Mark and Judy Luther  
 Wes and Donna Luther  
 Cory MacIver  
 Kenny Mack  
 Mackenzie Mack  
 Harlow and Pauline Magnusson  
 Merlin and Joanie Martin  
 Michael Massine

Dale Mattern  
 Gino Maxi  
 Roger and Jodi Mazurek  
 Jim McIntyre  
 Bill and Kim McLees  
 Chad McNally  
 Pat McNally  
 Ryan and Denbea McNally  
 Terry and LuAnne McPartland  
 Ernest and Helen Medalen  
 Stu Melby and Karen Pocha-Melby  
 Jason Merck  
 Roger Mergenthal  
 Tim and Laura Mihalick  
 Henry and Sharon Milkey  
 Jeff and Rita Miller  
 Rose Morgan  
 Kirby and Cindy Mueller  
 Matt Murken

Chris and Shawna Poitra  
 Jim and Evelyn Probst  
 Gary Rabe  
 Mark Rasmuson  
 Wade Regier  
 Kenneth and Debra Reinke  
 Tammy Risk  
 Neil and Amy Roberts  
 Ron and Lynn Rogelstad  
 Milton and Bonnie Rolle  
 Rod Romine  
 Judy Ross  
 Scott and Linda Ross  
 Tom Ross  
 Scott and Rebecca Ruzicka  
 Maynard Sandberg  
 Bob Sando  
 John and Wendy Schaffer  
 David Scharpe  
 Tristan and Tina Scheig  
 Bob and Diana Schempp  
 Randall Schepp  
 Brad and Michele Schimke  
 Marv and Barb Semrau  
 Dave and Jean Senger  
 Jeff and Julie Senger  
 Mike and Marie Sidener  
 Joe and Nancy Siefried  
 Ken and Ellen Simmons  
 Don and Betty Skari  
 Pat and Liz Slotsve  
 Jason and Catherine Spain  
 Melissa Spelchen  
 Derris and Lois Staflien  
 Jerry and Deb Staflien  
 Jerry and Diane Stai  
 Jock and Lacey Stevick  
 Harold and Susan Stewart  
 Roscoe Streyle  
 Paul Suess  
 Terry Summers  
 Steven Swenson  
 Linda Erickson Talley  
 Connie Teets  
 Mike and Ann Thorson  
 Gary Thuner  
 Bill Triplett  
 Darrik and Betsy Trudell  
 Curtis and Irva Undlin  
 Dallas and Carrie Varty  
 Kevin and Carla Vigested  
 Chad Vogel  
 Jay Wahlund  
 Larry and Edwina Wahlund

Terry and Doreen Wald  
 Gary and Arlene Walhaug  
 Greg Wallace  
 DuWayne and Karen Walz  
 Travis Ward  
 Brock and Glenda Weppler  
 Richard Westlake  
 Alan and Marjorie Westphal  
 Pat and ReNae Wheeler  
 Keith and Pat White  
 Hermelle Wilson  
 Jack and Suzanne Wilson  
 Kevin and Renae Yale  
 Dean Zaderaka  
 Erika Zaman  
 Merle and Eileen Zander  
 Curt and Linda Zimbelman

## ORGANIZATIONS/ BUSINESSES

Advanced Business Methods  
 Alley Bertsch Memorial Scholarship  
 Allstate Insurance-The Kim Albert  
 Agency  
 American Bank Center  
 Anderson D & S Bootery  
 Arrowhead Liquors/Lamplighter  
 Lounge  
 Artz Insurance  
 Best Western Kelly Inn  
 Big Time Bistro  
 Brady, Martz & Associates, PC  
 Bremer Bank  
 Burger King  
 Century Eyewear, Inc  
 Chiropractic Arts Clinic  
 Clear Channel  
 Clute Office Equipment Inc.  
 Comfort Inn  
 Copperhead Corporation  
 Dacotah Bank  
 Dakota Square Dental  
 Davison Larson Associates  
 Eagle Well Service  
 EAPC Architects & Engineers  
 Edward Jones-Mark Kohlman  
 Edward Jones-Greg Tschetter  
 El Rancho Motor Hotel  
 Exercise Equipment Center  
 Farstad Oil  
 First Cable Advertising  
 First International Bank & Trust  
 First Western Bank & Trust  
 Forward Communication Inc.  
 Gate City Bank



Gowan Rain Gutter  
 Grand International  
 Greenwood Plumbing & Heating  
 Hampton Inn and Suites  
 Harley's Arrowhead Conoco  
 Hight Construction  
 Holiday Inn-Minot  
 Homesteaders Restaurant  
 Hoopster  
 I. Keating Furniture World  
 Indigo Signworks  
 Investors Management & Marketing  
 Investors Real Estate Trust  
 Jerome's Collision Center  
 Kadmas, Lee & Jackson  
 Kemper Construction Company  
 Kenmare & Parshall Dental  
 KMOT TV  
 KXND FOX TV  
 Land & Sea Organics  
 Lowe's Printing Inc.  
 Magic City Beverage  
 Maxson Law Office, P.C.  
 McGee, Hankla, Backes &  
 Dobrovoly PC  
 Metro Developers LLC  
 Michael A. Lucy Agency, Inc  
 Midwest Business Systems  
 Midwest Coca Cola  
 Mile One Running Shop

Minot Area Chamber of Commerce  
 Minot CVB  
 Minot Daily News  
 Minot Family YMCA  
 Minot Guaranty & Escrow  
 Company  
 Minot Paving Company  
 Minot Restaurant Supply  
 Monarch Products  
 Mowbray & Son Plumbing &  
 Heating  
 Nash Finch Co.  
 Neenah West Chiropractors  
 Newman Outdoor Advertising  
 North Country Sportswear  
 North Dakota Port Services, Inc.  
 Northern Trophy & Engraving  
 Northwest Building Improvement  
 Odney Advertising Agency  
 Overhead Door Company of Minot  
 Papa Murphy's Take 'N' Bake Pizza  
 Paradise Spas  
 Peoples State Bank  
 Prairie Engineering  
 Preferred Minot Real Estate  
 Preferred Restaurant Group, Inc.  
 Randall Schepp Agency  
 Raymond James Financial Services  
 Reiten Television/KXMC CBS 13  
 Rolac Contracting

Roll-N-Pin  
 Ruelle Barber Service  
 Sammy's Pizza  
 Sleep Inn & Suites  
 Soltis Business Forms  
 Souris Valley Dental Group  
 Sports on Tap/Planet Pizza  
 Stevick Business Forms  
 Tecta America Dakotas LLC  
 The Original Wineburger  
 The Pita Pit  
 Thomas Family Funeral Home  
 Thompson-Larson Funeral Home  
 Thorsrud Supply Co. Inc.  
 Tires Plus Total Car Care  
 Tollefson's Retail Group, Inc.  
 Town & Country Insurance Agency  
 Twin Oaks Resort  
 United Community Bank of  
 North Dakota  
 Vally Sport & Marine  
 Wells Fargo Bank, NA  
 Western Agency Group  
 Western ND Pro-Am  
 Western Steel and Plumbing  
 WGO Sunny 101  
 Wholesale Supply  
 Wilbur Ellis Company  
 Xcel Energy  
 Xpress Mart

## DONORS

The following are donors who also have contributed to the success of Minot State University students.

### INDIVIDUALS

James A. Aarhus  
 Micheal and Stacy Aasen  
 David P. Aeikens  
 Sara Aeikens  
 Darrel and Kathleen Ahmann  
 Carol A. Alex  
 Gene W. Allen  
 Alan and Karen Allstadt  
 Joe and Joyce Alme  
 Nancy B. Andersen  
 Charles and Clarisse Anderson  
 Dave and Pamela Anderson  
 Erik and Dianna Anderson  
 Erin M. Anderson  
 Travis W. Anderson  
 Lola A. Andrews  
 Charles and Kelly Arbaut  
 David A. Armstrong  
 Larry D. Armstrong  
 Nancy Armstrong  
 Kenneth and Bobbi Arneson  
 Brent and Stacy Askvig  
 Jack and Brenda Aspaas  
 Brian and Louise Axten  
 Matthew Axten  
 Rachelle Axten  
 Vernon and Louise Axten  
 William and Dorothy Axten  
 Orlin and Millie Backes  
 Judith R. Bacon  
 Christopher and Darla Bailey  
 Bruce and Ollie Baker  
 Michael and Liz Bakk  
 James and Nancy Ballard  
 Diane M. Barber  
 Ellen Barber  
 Bruce D. Barcomb  
 Mary Barkworth  
 Anthony and Melissa Barnes  
 Larry and Caren Barnett  
 Christopher T. Barney  
 Barbara D. Barron  
 Toni M. Barth  
 Gary E. Barton  
 Casey and Janet Baumann  
 Justin D. Beahm  
 Paul and Diana Bearmon  
 Donald L. Becker  
 Jeremy Becker  
 Richard and Josephine Beitzel  
 Richard Belisle

Mark and Carmen Bell  
 Claudia R. Benjamin  
 John and JoAnne Benson  
 Linda E. Benson  
 Linda A. Berdahl  
 Caroline Berg  
 Eric and Kristi-Ann Berg  
 Joey and Erin Berg  
 Shawn and BreeAnne Bergstrand  
 Marvin C. Berke  
 James and Sharon Berkenpas  
 Wallace and Mary Ellen Berning  
 David and Brenda Berntson  
 Elaine D. Berntson  
 Ronald S. Berntson  
 Joan Bertram  
 Lynda K. Bertsch  
 Ryan and Ginger Bessette  
 Tim and Ann Beste-Guldbog  
 Gary D. Bickel  
 Kelly and Gail Bickler  
 Stephen Bill  
 Alan and Judith Billehus  
 Sidney A. Bingaman  
 Howard and Shirley Bird  
 Roger and Paula Bischof  
 John F. Black  
 Theresa A. Black  
 Winston and Tam Black

John and Mary Blesener-Sullivan  
 Gregory and Jackie Blikre  
 Duane W. Block  
 Jim and Connie Blomberg  
 Byron and Christine Blowers  
 Karen Blumbagen  
 James and Carolyn Bodell  
 Ryan L. Bodell  
 Victoria L. Boehnke  
 Bruce and Patricia Bolyard  
 Joseph S. Bolyard  
 Jack and Sue Bone  
 Andrew and Lisa Borden-King  
 Lynn M. Bosley  
 Nicholas N. Bowersox  
 Nancy G. Boyd  
 David Bradley  
 Terrance L. Bradley  
 Melda Bragg  
 Penny Brandt  
 Richard D. Brandt  
 Eva P. Braun  
 Jean F. Braun  
 Marvin R. Braun  
 Duane and Jeanne Brekke  
 Marc and Jancy Brisson  
 James J. Britsch  
 Chelsea R. Brown  
 Danica K. Brown

Teresa R. Brummond  
 Holly M. Bryant  
 Ryan and Samantha Bryant  
 David and Renata Buen  
 Joseph and Kelly Buettner-Schmidt  
 David J. Buness  
 Roger J. Burchill  
 Randy and Pat Burckhard  
 Brent P. Burgard  
 Allan G. Burkhardtmeier  
 Curtis L. Burow  
 Nancy C. Cain Sommers  
 Frank and Karen Cape  
 Yvonne Carlson  
 Paul and Elaine Carlson  
 James and Laurel Carnine  
 Steve Carrigan  
 Jacob Carstensen  
 Tom and Jeanne Carver  
 Sandra R. Cech  
 Shawn Chaffin  
 Barry E. Chathams  
 Michael D. Chilson  
 Tom D. Christen  
 Bill Christen  
 Nancy K. Christensen  
 Bruce A. Christenson  
 Bruce and Linda Christianson  
 Kent L. Christianson





Denita M. Clapp  
 Theodore and Jane Clark  
 Susan M. Clarys  
 Kendra L. Clementich  
 Mary Beth Clouston  
 James and Sara Cole  
 John and Shirley Cole-Harding  
 Ronald F. Coleman  
 Joseph F. Colloca  
 Kevin and Merri Jo Connole  
 Ronald and Clarice Corey  
 Beverly and John Cousins  
 Garnet Cox  
 Jerry W. Crafton  
 Lois M. Crandall  
 Todd and Linda Cresap  
 Richard Crisera  
 Chester and Brenda Curtis  
 Merita E. Dablow-Aldayel  
 Martin and Alisa Dahl  
 Wayne Dale-Johnson  
 Scott Daniels  
 Richard and Laura Danielson  
 Mark and Cathy Davis  
 Stacie L. Dawson  
 Richard Debertin  
 Doug DeGree  
 Richard D. Dendinger  
 Tom and Leslie DeRuyter  
 Debra J. DeWitz  
 Jay and Sheree Diede  
 Lilah S. Diederich  
 Codi L. Dodds  
 Michelle M. Dolan  
 Tammy R. Dolan  
 Deanna L. Donnelly  
 Irene E. Dostert  
 William J. Drewes

Daniel and Stephanie Drovdal  
 Diane C. Dufner  
 Nicole A. Dyess  
 Sherry Dyke  
 Margaret L. Earle  
 Terry F. Eckmann  
 Joan M. Edmonds  
 Blake Eggl  
 Rhonda M. Eichhorn  
 Alan and Cheryl Ekblad  
 Joyce M. Ekness  
 Dale and LaDonna Elhardt  
 David and Wendy Ellingson  
 Dale D. Ellis  
 Robert F. Ellis  
 Jared Engh  
 Justin P. Ensign  
 Laura L. Entwistle  
 Daniel and Kelli Erdmann  
 LaDonna L. Erdmann  
 Cameron and Khristy Erickson  
 Linda L. Erickson  
 Sonja T. Erickstad  
 Lisa L. Eriksmoen  
 Susan Evans  
 Kendra D. Evensvold  
 Erma L. Fahlgren  
 Myron and Kathy Feist  
 Donald and Donna Fettig  
 Janice Fiedler  
 Chris Filibeck  
 Katherine Fimreite  
 John Fishpaw  
 Karen M. Flath-Olson  
 Lyle and Char Fogel  
 Mary K. Fontaine  
 Joe Ford  
 Aaron and Jessamy Fornshell

Jeffrey A. Forsberg  
 Zachary and Lisa Fortsch  
 Dean and Jean Foss  
 Duane and Carol Foss  
 Wayne and Brenda Foster  
 Gerald D. Fox  
 George Franklin  
 Dean and Sara Frantsvog  
 Nathan and Nichole Freeman  
 Thomas M. Froelich  
 Jeffrey and Jessica Fuchs  
 David and Nancy Fuller  
 Judith B. Funk  
 Mike and Kathy Gaddie  
 Richard A. Gaffrey  
 John and Della Galligan  
 Shawn and Lori Gartner  
 Lisa M. Gaylor  
 Joshua and Kylee Geer  
 Matthew and DelRae Geinert  
 Robin L. Gense  
 Cheryl Gerard  
 Richard and Jane Gerber  
 Kellie A. German  
 Mike Getzloff  
 Jerry and Patricia Giesinger  
 Mike and Stacey Gietzen  
 Sharon Gill  
 Doris Gilles  
 Carlen J. Gilseth  
 John and JoAnn Girard  
 Elizabeth L. Gjellstad  
 Velda Glick  
 Cornie and Hilde Goertzen  
 R. Craig Goff  
 James S. Goodman  
 Laverne N. Gores  
 Marion C. Gossman  
 Gary and Judith Gottschalk  
 Rhonda C. Gowen  
 Mary A. Grafton-Krogh  
 Elliott and Karen Grandall  
 Michael G. Grandall  
 Brooks Grantier  
 John Greenslit  
 Dave Greenwood  
 Arthur O. Grochow  
 Fred A. Grosz  
 Dan and Christie Gubbels  
 Sarah R. Guss  
 Randy and Joan Gust  
 Kenneth and Shanette Haarsager  
 Leo and Shirley Haberkack  
 Gregory and Dawn Haga  
 Brian Hagan

Jerome T. Hagen  
 James and Linda Haider  
 Douglas and Susan Halden  
 Ryck Hale  
 Roger E. Hamalainen  
 Sally A. Hambek  
 Denece V. Hansen  
 Jerry and Kerry Hansen  
 Stan and Judith Hansen  
 Donald C. Hanson  
 Luther and Diann Hanson  
 Mick and Ann Hanson  
 Kevin and Leisa Harmon  
 Randy and Lisa Harmon  
 Jennifer L. Harris  
 Ruth D. Hartman  
 Donna M. Harvey  
 Bruce and Karin Haskell  
 Lonnie and Mary Hass  
 Holly I. Hassler  
 Clara A. Hauck  
 Randall and Kathy Haugeberg  
 Levi and Shana Haugenoe  
 Carol Hayes  
 Kelly and Roxann Hayhurst  
 Dennis and Jane Healy  
 Rick and Andrea Hedberg  
 Ardythe L. Hedges  
 Jeff and Jennifer Hefter  
 Kent Heilman  
 Richard and Erin Heit  
 Andrew J. Heitkamp  
 Kelly Heller  
 Stanley and Corrie Heller  
 Gerry S. Helmers  
 Daniel E. Henjum  
 Kenneth and Jean Hennix  
 Nancy Hettwer  
 Jay Hight  
 Richard K. Hill  
 Bernell B. Hirning  
 Terry and Gail Hjelmstad  
 James K. Hochhalter  
 Kandice R. Hoffman  
 Mark and Anna Hoffman  
 Jerry Hoiland  
 Carol Holen  
 Pat and Linda Holien  
 Michael J. Holland  
 Barry and Lynae Holmen  
 Bonnie L. Holmen  
 Robert and Karen Holmen  
 Nadine J. Holmly  
 Todd and Sherry Holst  
 Kelsey and Erin Holt

Brett and Lori Holtz  
Jane K. Holtz  
Brian and Janet Hornecker  
Ryne P. Hornecker  
Bob and Catherine Horvath  
Gary and Carol Hovdestad  
John and Janette Howard  
Allan and Ev Huber  
Brenda L. Huckell-Schick  
George and Peggy Hudson  
Anton A. Huether  
Jordan Huettl  
Ron and Korie Huettl  
Michael and Susan Hummel  
Mary E. Huston  
Joshua and Amber Hvidsten  
Dale and Louisa Indergaard  
DeLane and Joanne Isaak  
Michael R. Ives  
Edouard and Eleanor Izac  
Barbara R. Jacobson  
James R. Jacobson  
Todd and Terrille Jacobson  
James J. Jamros  
Mark and Mary Jantzer  
Joseph C. Jastrzembski  
Janice A. Jechort  
Dick and Sally Jenkins  
Jacob and Amy Jenkins  
Thomas E. Jensen  
Shari L. Jerde  
John and Ann Jermiason  
Sharon V. Jewell  
Jen S. Johannsen  
Colleen Johnson

Denise R. Johnson  
Evelyn J. Johnson  
James and Kelly Johnson  
Joan Johnson  
Laurie A. Johnson  
Randall and Vallerie Johnson  
Sharon R. Johnson  
Terry D. Johnson  
Thurstan and Jodi Johnson  
Richard Johnston  
Mark and Jamie Jokela  
James M. Jonas  
Rebecca R. Jungemann  
Wayne and Anne Junker  
Ronald and Donna Just  
David E. Kaliher  
Harvey and Gayle Keeney  
Heldric and Bethany Keusch  
Galen C. Kihle  
Karland A. Kilian  
Kathryn C. Kilroy  
Jordan and Faith King  
Brenda J. Kingsbury  
Donald and Laurae Kingsbury  
Kent and Chelsea Kirkhammer  
James and Deanna Klein  
Jonn D. Knecht  
Jim and Celeste Knudsen  
Julia A. Koble  
Judy R. Kocis  
Lenore Koczon and Jay Weintraub  
Carol Koelle  
Mark Kohlman  
Glenda D. Korgel  
Blaine Kotasek

Kelly and Lee Ann Krahler  
Dorothy J. Kramer  
Michael and Karolyn Kramer  
Ruby Krause  
Karen L. Krenz  
Joe and Geraldine Kress  
Dan and Kathy Krosbakken  
Stanley J. Kruger  
Brian Kruk  
Wilton and Judy Kuehn  
Sharon W. Kuhlenschmidt  
Curtis W. Kumpf  
Debra F. Kunkel  
Tom Kuntz  
Kevin L. Kvale  
Angela M. Kyle  
Wade and Mary Kynett  
Rick A. LaCroix  
Margaret D. LaFontaine  
Lyle S. Lamoureux  
Judy K. Lamphron  
Tyron Langager and Rita Curl-  
Langager  
Dan and Jeri Langemo  
Darwin and Nancy Langseth  
Deborah A. Lanman  
Richard and Cindy Larcombe  
Ardella A. Larson  
Ronald and Jesslyn Larson  
Todd and Laura Larson  
Tracy and Sandra Larson  
Swift and Sheila Latham  
Lowell and Ann Latimer  
Brenda L. Laub  
Inez M. Laugtug

Tom and Joanne Lautenschlager  
Frank C. LaVia  
Colleen A. Leary  
Amy J. Leathers  
Edward A. LeBeau  
John and Bonnie Leddon II  
Carla A. Lee  
Virginia Leidholt  
Tammy J. Lemcke  
Travis and Michelle Leonard  
Paul and Cheryl Lepp  
Andrew and Teal Leraas  
Diane E. Lesman  
Steven and Cheryl Lesmeister  
David and Arnola Levenson  
Don and Audrey Lilly  
James and Becky Limke  
Patrick and Jacqueline Limke  
Tom and Paula Willis  
Michael and Nichole Linnell  
JoAnn K. Linrud  
Peggy A. Linrud  
Woody and Amy Lisner  
Nancy Lium  
Ted and Nancy Livesay  
Maxine Lodmell  
Ronald I. Loen  
Lee M. Loendorf  
Darrel and Teresa Loftesnes  
Whitney K. Loftesnes  
James Lokken  
Richard and Gloria Lokken  
Scott and Alexa Louser  
Frances A. Lovelace  
Cheryl L. Ludwig  
Linda Luedke  
Marie C. Lundfelt  
Jay and Michelle Lux  
Jerry G. Lyon  
Steven D. Lysne  
Paul and Susan MacLeod  
L. J. MacMartin  
Sarah L. Maddock  
Tom and Linda Madsen  
Randall and Lesley C. Magnus  
Cliff Magnuson  
Harlow and Pauline Magnusson  
Sheila E. Maher  
Brian and Nancy Malchert  
Lester and Taryce Malnaa  
Joanne Manchester  
Eric L. Manlove  
Zara L. Mannion  
Brandon and Aryn Mappes  
Clark Markell



Gwenlyn C. Marsh  
 Daniel and Kate Marshall  
 Darryl and Marcia Martin  
 Gwen D. Martin  
 Merlin and Joanie Martin  
 Mike and Donna Massine  
 Wesley and Valerie Matthews  
 Burt and Karen Matthies  
 Joan L. Mattson  
 Deborah A. Maves  
 Patricia J. Mayer  
 Devin McCall  
 Carla McCann  
 Shirley Y. McEvers  
 Aaron and Janna McKechnie  
 Louis E. McLeod  
 Chad McNally  
 Wanda M. McWhorter

Jeffrey and Janice Meyer  
 Judith M. Miller  
 Miles Miller  
 Thomas A. Miller  
 Orland H. Mittelberg  
 Gaylord and Mary Kay Modin  
 Selmer and Carol Moen  
 Margaret L. Molin  
 Bob and Lavone Mongeon  
 Nadine M. Moon  
 Dylan and Laken Moore  
 Melanie R. Moore  
 Neil L. Moore  
 Carla L. Moorhead  
 Carolyn J. Morey  
 Tim and Kim Morris  
 Gregory S. Morrison  
 Pamela A. Mostad

Patrick and Mary Lou Neault  
 Jolene K. Nechiporenko  
 Jon and Judy Nehring  
 Kelly G. Nehring  
 Aaron and Trisha Nelson  
 Floyd M. Nelson  
 Jack M. Nelson  
 Kenneth and Marcella Nelson  
 Lowell and Cynthia Nelson  
 Marilyn J. Nelson  
 Reness L. Nelson  
 Robert and Patricia Nelson  
 Robyn D. Nelson  
 Sandra J. Nelson  
 Gayle N. Nering-Gorseth  
 Paul Ness  
 Susan Ness  
 Ralf and Suzanne Neufang

Gary and Jane Nutz  
 Jack and Colette Nybakken  
 Matthew and Deanne Ober  
 Carl Obert  
 Clarence P. Olson  
 Dale and Teresa Olson  
 Gordon R. Olson  
 Linda G. Olson  
 Linda Olson and David Leite  
 MarVonne A. Olson  
 Rodney and Marcia Olson  
 Robbie and Carisa Opperude  
 Melford Opstad  
 Dwight and Jane Ormiston  
 Lois K. Ostenson  
 Frank J. Pacovsky  
 Ronald and Kayla Palczewski  
 James A. Papacek  
 Herb and Vangie Parker, Jr.  
 Connie M. Pate  
 Paul and Nancy Pearson  
 Richard A. Peckham  
 Gladys Pennington  
 James and Joan Perry  
 Jerald E. Petersen  
 Kathleen Y. Peterson  
 Steve and Judi Peterson  
 Terrance and Camille Peterson  
 Terry A. Peterson  
 Douglas and Paula Pfau  
 Donarae G. Picton  
 Walter and Becky Piehl  
 Lydel and Frances Pierce  
 Diane Pierson  
 Timothy J. Plesuk  
 Russell F. Pommier  
 Matt and Sarah Power  
 Tyler and Jamie Prellwitz  
 Gary and Clara Sue Price  
 Carolyne Psutka  
 Roger E. Pullen  
 John M. Quie  
 Dustin and Brooke Raaum  
 Paul R. Ralston  
 Tim and Boni Randall  
 Robert Rau  
 Diana L. Read  
 Pete and Carol Reed  
 Jacqueline Reep-Jarmin  
 James A. Reeves  
 Wade and Ashley Regier  
 Ken and Deb Reinke  
 Linda K. Reiser  
 Rita M. Resch



Curt and Lorraine Medalen  
 Ernie and Helen Medalen  
 Jeffrey and Lynette Meiers  
 Stuart Melby and Karen  
 Pocha-Melby  
 Joe and Annette Mennem  
 John and Mary Mercer  
 Claudette Merck  
 Michael and Gail Merck  
 Minnie Mary Merrill

Laurence Muratore  
 Rudy C. Murieen  
 Matt P. Murken  
 Laura L. Murray  
 James and Sandra Myers  
 Alison Myhra  
 Margie Myhra  
 Tom and Gloria Myhra  
 Amelia R. Nash  
 William A. Nawrocki

Cassie Neuharth  
 Kyle and Ashley Nichols  
 William and Laura Nicks  
 Larry and Merrilee Nielsen  
 Theresa Niess  
 William and Amanda Nissen  
 Laurie A. Nolan  
 Mark and Anne Nordgaard  
 Neil and Ren'ee Nordquist  
 Mike and Kathleen Notestine

Donald and Mary Revers  
 Lauri A. Richard  
 Doug Richter  
 Tom and Sandra Richter  
 Wayne and Robin Richter  
 Barbara Rings  
 Timothy and Georgianna Roach  
 Pamela Robertson  
 Gerry and Dorie Robertus  
 David and Laura Rochholz  
 Dale and Nicola Roed  
 Jeff and Brenda Roedocker  
 Alpha Roeszler  
 Jonathon Rolfson  
 Judy K. Rolfson  
 Royce Rolfson  
 Milt and Bonnie Rolle  
 Colleen A. Ronning  
 Eldon Ronning  
 Robert B. Ronning  
 Kirk and Bryn Roos  
 Gary J. Ross  
 Clyde E. Rostad  
 Jim and Verla Rostad  
 Lisa Roteliuk  
 Mary Rowe  
 Robert E. Roy  
 Norma J. Ruble

Darrell and Judy Rud  
 McKenzie K. Rudolph  
 Paul and Renae Rudolph  
 Doug and Barbara Rued  
 James M. Ruiz  
 Tyler and Christina Rust  
 Scott and Rebecca Ruzicka  
 Jose and Patricia Saenz  
 John and Barbara Samuelson  
 Mary A. Sander  
 Joy K. Sanders  
 Kevin and Ranae Sanders  
 Clarine A. Sandstrom  
 Mark and Gloria Sanford  
 Dave and Arnola Savelkoul  
 Linda Schaefer  
 Gracia L. Schall  
 Neil and Jo Scharpe  
 Courtney Schauer  
 Priscilla Scheet  
 Genevieve G. Schentzel  
 Janice L. Schepp  
 Carol A. Scheuffer  
 Laurel and Gerald Schlag  
 Jason and Tiffany Schmelz  
 Blake and Kimberley Schmidt  
 Daniel D. Schmidt  
 Pamela A. Schmidt

Rodney J. Schmidt  
 Arthur A. Schmitz  
 Dave R. Schmitz  
 Chad and Angela Schnaible  
 Sue L. Schneider  
 Donna M. Schrantz  
 Joel D. Schriock  
 Orlene Schroeder  
 Chuck and Deb Schultz  
 Glen Schwartz  
 Rhonda M. Schwartz  
 Toni D. Schwartz  
 Ladonna L. Schwieger  
 Sharon Seddon  
 Richard and Linda Seklecki  
 Marv and Barb Semrau  
 Rhonda L. Senecal  
 H. Erik and Jane Shaar  
 Patrick and Deborah Sheldon  
 Jean Sheldon  
 Margaret E. Sherve  
 Jared and Alison Sherven  
 Brenda Shields  
 Randy Shirek  
 Ken and Ellen Simmons  
 Tom and Celeste Simmons  
 Dale R. Simon  
 Connie Simonson

Greg and Pam Simonson  
 Paul and Paula Simonson  
 Barbara A. Sinha  
 Kevin Sivertson  
 Galen and Terri Skarphol  
 Larry A. Skjoiten  
 Mike Skytland  
 Rachel G. Slater  
 Seinquis Slater  
 Sherry K. Slycord  
 Greg D. Smestad  
 Gordon Smette  
 Aili M. Smith  
 Travis and Sara Smith  
 Paul O. Soderberg  
 Melva L. Sogard  
 Terry L. Solar  
 Eileen Solberg  
 Sheryl L. Solberg  
 Donald L. Soli  
 Sherrie A. Solper  
 Shane and Lori Soltis  
 Ragene E. Sovak  
 Jason and Catherine Spain  
 Melissa J. Spelchen  
 Jerome and Judith Spitzer  
 Jack E. Sprague  
 Ellen St. Croix



Derris and Lois Stafslien  
 Jerry and Deb Stafslien  
 Justin and DeAnn Stanley  
 Ken and Sandy Starr  
 Charlie and Kathy Steel  
 Jay and Crystal Steeves  
 Murray and Daphne Steeves  
 Gary L. Stefonowicz  
 Raymond and Shirley Stein  
 Blaine A. Steiner  
 Gene L. Stephens  
 Rob Stevenson  
 Donna G. Stevick  
 Bradley and Roberta Stober  
 Jesse and Lindsay Stober  
 Johnathan and Lindsay Stober  
 Gail and John Stratton  
 Les Stregre  
 Eleanor K. Stromberg  
 Michael and Becky Strotheide  
 Paul H. Suess  
 Matt and Erin Sund  
 Jaycin and Michelle Sundheim  
 Michael W. Swann  
 Arvin and Patricia Swanson  
 James E. Swanson  
 Steven J. Swenson  
 M. A. Talbott  
 Hannah B. Tam  
 Carolyn A. Tandberg  
 Doug and Connie Teets  
 Paul and Sherri Tefft  
 Nancy L. Thane  
 Marcel and Janan Thom  
 Jacqueline M. Thomas  
 Kayla J. Thomas  
 Chad and Angela Thompson  
 Ethel L. Thompson  
 John and Sandra Thompson  
 Stephen A. Thompson  
 Michael W. Thorson  
 Mark and Eunice Timbrook  
 Michael Timm  
 Kristin L. Tintzman  
 B. W. and Irene Tjon  
 Tyson S. Tjon  
 Ted W. Toavs  
 Duane Tollefson  
 Bill and Kara Triplett  
 Roger D. Triplett  
 Cameron and Rebecca Trudell  
 Don and Bonnie Trueblood  
 Nancy R. Tschetter  
 Jerry and Susan Tuchscherer



Ted E. Turcotte  
 Michael and Brenda Tzipori  
 Gerald and Alice Undlin  
 Andrew and Amelia Van Den  
 Bossche  
 Carol M. Van Eckhout  
 Daniel and Gisela Vanness  
 Michael and Roxanne Vendsel  
 Jeffrey and Janelle Verhey  
 Mark Vibeto  
 Zona G. Vick  
 Lenny and Kelley Vine  
 Kristofer and Abby Vinger  
 Jim and Nancy Vitko  
 Lando D. Vix  
 Greg Vogelsang  
 Gus and Liana Vogelsang  
 Megan Vogelsang  
 Jay and Carla Wahlund  
 Zachariah and Cara Waitman  
 Sarah and Kenneth Wosepka  
 Sheila A. Walcoff  
 Terry and Doreen Wald  
 Shane and Sharon Walker  
 Greg A. Wallace  
 DuWayne and Karen Walz  
 Charles M. Wankel  
 Travis Ward  
 Kristen M. Warmoth  
 David and Laurie Weber  
 Theodora G. Weber  
 Jeremy and Ashley Wedge  
 Christopher K. Wegner  
 Barry and Darla Weigel  
 Delynn and Michelle Weishaar

Daniel Weiss  
 Carmen A. Welscher  
 Beth R. Wentworth  
 Dwight and Deb Wentz  
 Grant and Kathy Wentz  
 Tom and Susan Wentz, Jr  
 Brock and Glenda Weppler  
 Max and Shelly Weppler  
 Alta Mae Westgaard  
 Jo Ella G. Westgard  
 Kevin N. White  
 Cindy L. Wiest  
 Cheryl Wilder  
 Dorothy J. Williams  
 Gerald and LaVonne Wilson  
 Hermelle A. Wilson  
 Jack and Suzanne Wilson  
 Jerry and Priscilla Wilson  
 Marian Wilson Boettcher  
 James and Rosie Winczewski  
 Dick and Judy Winje  
 Harvey Wittmayer  
 Medora L. Witwer  
 Edward and Tammy Wolf  
 Brian and Stephanie Wolfe-Prange  
 George and Joyce Wong  
 Jack A. Woods  
 Debra M. Wright  
 Kevin and Renae Yale  
 Gene E. Zahursky-Klein  
 Dennis and Jean Zerface  
 Jason and Dusty Zimmerman  
 Chad Zorn  
 Mike Zorn  
 Faye Zurcher

## ORGANIZATIONS/ BUSINESSES

A-1 Evans Septic Tank Service  
 Advanced Investment  
 Consulting Inc.  
 All Seasons Sport About Inc.  
 ALRY Publications LLC  
 Beartooth Crown and Bridge Inc.  
 Bismarck State College  
 Foundation  
 BK Financial Services  
 Burger King  
 Central Power Electric Coop. Inc.  
 Coldwell Banker-1st Minot Realty  
 Diamond Resources  
 Eck Foundation  
 Enbridge Pipelines ND  
 Gateway Building Systems of  
 Minot Inc.  
 GoodSearch  
 Hess Corporation  
 Holiday Inn  
 Indigo Signworks Inc.  
 Knowles Jewelry  
 Leak Tech  
 Lipp Chiropractic Clinic PC  
 Lowe's Printing Inc.  
 Magic City Financial Group  
 Magic City Striders Running Club  
 Montana Dakota Utilities  
 Minot Area Community  
 Foundation  
 Minot Matwrats Wrestling Club  
 Minot Public School Foundation  
 Minot Winnelson Co.  
 Missouri Breaks Brewing LLC  
 Montana Dakota Utilities-MDU  
 Northern Tier Credit Union  
 Otter Tail Corporation  
 Palmer Bit Company Inc.  
 Paradise Spas & Motor Sports  
 Pexco LLC  
 Planet Pizza  
 Prairie Engineering  
 Preferred Minot Real Estate  
 Ryan Chevrolet Inc.  
 Sage Hill LLP  
 SRT Communications Inc.  
 Thompson-Larson Funeral Home  
 Town & Country Barber  
 Town & Country Credit Union  
 Trinity Health  
 Valley Tissue Culture Inc.  
 Vegas Motel



Viking Fund Management  
 Voices of Note  
 Watne Better Homes & Gardens Realtors  
 Wells Fargo Foundation  
 Wilbur Ellis Company

## ESTATES & TRUSTS

John and Lucille Decker Charitable Gift  
 Endowment  
 Lyle C. Hanson Estate  
 Janet Wentz Estate

## MATCHING GIFT

### CORPORATE SPONSORS

Auto Owners Insurance Company  
 Devon Energy Corporation  
 Gannett Foundation  
 MDU Resources Foundation  
 Microsoft Matching Gifts Program  
 Northwestern Mutual Foundation  
 Oracle Corporation Matching Gifts Program  
 Otter Tail Power Company  
 State Farm Companies Foundation  
 US Bancorp Foundation  
 Wells Fargo Community Support  
 Wells Fargo Educational Matching  
 Xcel Energy Foundation

## IN HONOR

In Honor of David and Nancy Fuller  
 Arlene Saugstad family

In Honor of Dawn Hintz and Nicole Gerjets  
 Larry and Cheryl Gerjets

In Honor of JoAnn Linrud  
 Dan and Jeri Langemo  
 Peggy Linrud

In Honor of Trudy Troutfetter  
 Janice Weller

## IN MEMORY

In Memory of Arthur L. Anderson  
 Nathan and Jennifer Anderson

In Memory of John S. Anderson  
 Robert and Patricia Holmen

In Memory of Ilene Beecher  
 Lynn Aas

In Memory of Agnes Cary-Benter  
 Lynn Aas

In Memory of Obert and Signe Berke  
 Larry and Cheryl Gerjets  
 Nicole Gerjets  
 Dawn Hintz

In Memory of Audrey Britsch  
 Tom and Gloria Myhra

In Memory of Lucille Burckhard  
 John and Leslie Coughlin

In Memory of J. B. Busse  
 Gary Fender

In Memory of Alan Campbell  
 Joan Johnson  
 Ken J. Johnson  
 Dan and Jeri Langemo  
 John and Jodi Stewart

In Memory of Doris Dahl  
 Arvin and Patricia Swanson

In Memory of Al Doerr  
 Ken J. Johnson

In Memory of Roger Drobash  
 Roxanne McLean

In Memory of Vence C. Elgie  
 Donna Elgie  
 Mike and Tammy Elgie  
 Dan Oberholtzer  
 Jeff Oberholtzer  
 Jerry and Deb Oberholtzer

In Memory of Kae Erickson  
 Nadine Blesener  
 Mark and Linda Hildahl  
 Dick and Sally Jenkins  
 Darrel and Teresa Loftesnes  
 Tim and Laura Mihalick  
 Minot Model Alumni Association

In Memory of Jeffrey Everhart  
 Barney and Valeda Steinle Greenspan

In Memory of Robert O. Field, II  
 Dave and Kathy Aas  
 Patrick and Amy Artz  
 Michael and Liz Bakk

Linda Benson  
 Dennis and Marvel Helgeson  
 Darrel and Teresa Loftesnes  
 MSU Alumni Association  
 Ken and Ellen Simmons

In Memory of Antonio Frank  
 Steven and Angela Johnson

In Memory of Anna Gaffrey  
 Hermelle Wilson

In Memory of Erma Goheen  
 Royal Goheen  
 Ronald and Avis Tvedt

In Memory of Veronica Grimes  
 Debra Reinholdz  
 Janice Weller

In Memory of Karen Groninger  
 Arvin and Patricia Swanson

In Memory of Brian Hagel  
 Walter and Becky Piehl

In Memory of Alfred Harstad  
 Arvin and Patricia Swanson



In Memory of Barb Johnson  
MSU Department of Nursing

In Memory of Clayton Johnson  
Mary Kowalski

In Memory of Lauren Kandt  
Janis A. Dislevy

Somerset Court  
Beverly Steenstrup  
John and Jodi Stewart  
Jim and Nancy Vitko  
Terry and Shawneen Voiles  
Don and Bertha Wald  
Peter Welk  
Dwight and Deb Wentz

In Memory of Carol Nelson  
Sandra J. Nelson

In Memory of Keith Newman  
Paul and Renae Rudolph

In Memory of Eric Nordquist  
MSU Communication Disorders  
Department Staff  
Thomas Froelich  
Cheryl Gerard  
Tim and Ann Guldborg  
Randall and Lesley Magnus  
Diane Pierson  
Lisa Roteliuk  
Orlene Schroeder

In Memory of Selma "Sally" Nordquist  
Lynn Aas

In Memory of Jerry Obenauer, Sr.  
Hermelle Wilson

In Memory of Ruby Parker  
William and Marilyn Parker

In Memory of Steve Pusc  
Nicole Dyess

In Memory of Chester Reiten  
Dave and Kathy Aas  
Lynn Aas  
David and Myrna Blackstead  
Clute Office Equipment  
John and Jodi Stewart

In Memory of Gladyce "Happy" Romine  
Verna Aleshire  
Chuck and Leslie Barney  
James and Carolyn Bodell  
Ardell Boyeff  
Bill and Celesta Edwards  
Janice Fiedler  
Lyle and Charlotte Fogel  
Wally and Winnie Hankla  
ZoeAnn Healy  
Rick and Andrea Hedberg  
Eldon and Sylvia Heidlebaugh  
Bill and Karen Hennessy  
Clint and Renee Hermanson  
Terry and Gail Hjelmstad  
Jack and Raziye Hoeven  
Jim and Karen Jensen  
Greg and Susan Johnson  
Jeff and Risa Kanavas  
John and Phyllis Kincheloe



In Memory of Mary Kraft  
James and Carolyn Bodell

In Memory of Michelle Larson  
Linda Benson

In Memory of Art Lee  
Gerald Caya  
Bill and Celesta Edwards  
Janice Fiedler  
Lyle and Charlotte Fogel  
ZoeAnn Healy  
Rick and Andrea Hedberg  
Mel and Yvonne Hoover  
Don and Sherry Hummel  
Ken J. Johnson  
Greg Kuntz  
John and Phyllis Landsiedel  
Todd and Janet Lawley  
Wes and Donna Luther  
Chad McNally  
Tim and Laura Mihalick  
Carley V. Olson  
Scott S. Olson  
MarVonne Olson  
Gordon and Linda Opstad  
Shannon Radke  
Jerry Romine  
Rod Romine

Richard Westlake  
Deborah Winger  
Dick and Judy Winje  
Dorothy Zwarych

In Memory of Bert Leidholt  
Virginia Leidholt

In Memory of Harry Lines, Jr.  
Barney and Valeda Steinle Greenspan

In Memory of Arthur Linrud  
Ken and Lona Anderson  
Dan and Jeri Langemo

In Memory of Doug Lockrem  
Willam and Edna Barnes  
Steve Denn  
Andy and Deb Heitkamp  
Mike and Alice Knoop  
Ella Mae Lockrem  
Steve and Tracey Lockrem  
Clayton Narum

In Memory of Thorval "Tuffy" Mack  
Darrel and Teresa Loftesnes

In Memory of Mary Marley  
Clinton Severson and Conni Ahart

Chuck and Nancy Kramer  
 Dan and Jeri Langemo  
 Beverlee Lee  
 Todd Lee  
 Gerard and Jeanne Ludikhuizen  
 Wes and Donna Luther  
 Dale and Kay Mattern  
 Doug Mattson and Penny Miller  
 Chad McNally  
 Gerald and Mavis Meyer  
 Tim and Laura Mihalick  
 Henry and Sharon Milkey  
 Jack and Colette Nybakken  
 MarVonne Olson  
 Reiten Broadcasting, Inc.  
 Darin and Lauri Romine  
 Rod Romine  
 Robert and Janeen Scheeler  
 Yvonne Schreiner  
 Leah Seright  
 Dean and Diana Somerville  
 Bob and Linda Sundberg  
 The Inga Ellzey CHIS Foundation  
 Larry and Edwina Wahlund

Richard Westlake  
 Keith and Pat White  
 Kenneth R. Williams  
 Hermelle Wilson

In Memory of Molla B. Romine  
 Marita Hoffart  
 Rod Romine

In Memory of Dick Schlapman  
 David Gunwall  
 Jeff Gunwall  
 Mick Gunwall  
 Rob Gunwall  
 Tom Gunwall  
 Wayne Gunwall  
 Jean Velenchenko

In Memory of Eric Schnabel  
 Darrel and Teresa Loftesnes

In Memory of John C. Smith, II  
 Daniel and Terry Aas  
 Dave and Kathy Aas

Joseph Aas and Nancy Morris  
 Lynn Aas

In Memory of Helen Springer  
 Barney and Valeda Steinle Greenspan

In Memory of Ron Stramel  
 Barney and Valeda Steinle Greenspan

In Memory of Arlin Thompson  
 Arvin and Patricia Swanson

In Memory of James Thompson  
 Marita Hoffart

In Memory of Mike Trudeau  
 Arvin and Patricia Swanson

In Memory of Jim Vossler  
 Frank and Val Bruels  
 Troy Cody

In Memory of Clair Watne  
 Don and Sherry Hummel



# Award Recipients

## Board of Regents Faculty and Staff Achievement Awards

FIVE AT MINOT STATE UNIVERSITY RECEIVED MSU BOARD OF REGENTS ACHIEVEMENT AWARDS.

*Three faculty members, Warren Gamas, Ernst Pijning and Clarine Sandstrom, and two staff members, Jason Spain and Doreen Wald, received MSU Board of Regents Achievement Awards May 8 during Minot State University's annual Employee Appreciation Event. The awards are as follows:*

**SERVICE: Warren Gamas** chairs the Department of Teacher Education and Human Performance and teaches three sections of ED 380: Technology in Teaching each semester. To share the latest technological advances, he facilitates collaborative partnerships with Minot Public Schools technology coordinators. Presently, Gamas is chair of the University Program Prioritization Committee, co-chair of the Centennial Academic Committee, and a member of the Institutional Review Board and the Planning and Budgeting Council.

**SCHOLARSHIP: Ernst Pijning**, history professor, is an expert on the history of Brazil and its relations with Europe and the Americas. He conducts research in Portuguese, Dutch, English and French, a rarity among historians. Pijning's work appears in prestigious journals, and he is

preparing a book, "Controlling Contraband: Economy, Mentality and Society in 18th Century Rio de Janeiro," for Louisiana State University Press.

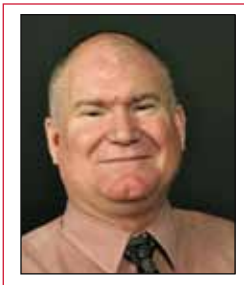
**TEACHING: Clarine Sandstrom**, associate education professor, is passionate about her role as an educator. The MSU alumna is a leader in undergraduate and graduate early childhood education, middle school and the adolescent learner, and gifted education. She is committed to preparing all candidates with current information and teaching strategies necessary for the diverse learning environments in which teachers work.

### STAFF AWARDS:

**Jason Spain**, head women's soccer coach, instituted the program three years ago and led the team to its first Northern Sun Intercollegiate Conference championship

and a national tournament berth during the 2012-13 season. Spain's enthusiastic service to the campus and community is outstanding. During the 2011 Mouse River Flood fight, he evacuated and fed flood refugees. When no other volunteers stepped forward, Spain volunteered to coach five youth soccer teams, so community children could continue to compete.

**Doreen Wald** started as an administrative assistant for the Department of Math and Computer Science in 1987. Doreen also worked as a weekend secretary for James Babb, while he chaired the North Dakota Education Fact Finding Commission. In 1994, she joined the Printing Office as a photo-typesetter and publication designer. She became the manager of the Office of Publication and Design Services and the MSU Copy Center in 2010.



Warren Gamas



Ernst Pijning



Clarine Sandstrom



Jason Spain



Doreen Wald

## MSU Alumni Association recognizes outstanding achievements

### GOLDEN AWARD RECIPIENTS

**RAY GIACOLETTI**, men's basketball coach at Drake University, graduated from Minot State University in 1985 with a bachelor's degree in physical education. A four-year letterman, Giacoletti was a student assistant coach at MSU in 1984-85, a graduate assistant at Western Illinois University in 1985-86 and an assistant at Oral Roberts University in 1986-87.



For 1988-89, Giacoletti joined the World Basketball League as an assistant coach for the Fresno Flames. But he returned to college coaching as assistant coach at Illinois State University in 1990-93 and the University of Washington in 1994-97.

The Peoria, Ill., native's first head coaching job was from 1998 to 2000 at North Dakota State University, where he went 48-33. In 2000, he went to Eastern Washington University to guide the Eagles to the best four years in program history. He then moved to the University of Utah for three years. He had the best record among NCAA Division I first-year head coaches and was 2005 Mountain West Coach of the Year.

In 2007, Giacoletti became an assistant coach at Gonzaga University. He helped continue the school's streak of 14 straight NCAA Tournament appearances, 15 straight appearances in the West Coast Conference Tournament championship game and its dominance of the WCC regular season, as Gonzaga has won 11 of the last 12 titles.

On March 28, 2013, Drake named Giacoletti as the Bulldogs' new head men's basketball coach.

**PAUL SODERBERG**, retired rear admiral, U.S. Navy, graduated from MSU in 1965 with a Bachelor of Science in mathematics and physical education. He made the all-conference team in basketball and football, served as Student Association president and was selected to "Who's Who in American Colleges & Universities" his senior year. He was inducted into the MSU Athletic Hall of Fame in 1992.



Following graduation, Soderberg taught high school math and coached in Stanley. In 1967, he accepted an assistantship at the University of North Dakota, where he attained a master's degree. Then, he attended U.S. Navy Aviation Officer Candidate School at Pensacola, Fla., and received a commission as an ensign in July 1969.

During his 33-year Navy career, Soderberg served on three Navy ships and visited ports throughout the world. His final assignment was as director of supply and logistics for the Fleet Forces Command, which included responsibility for logistics readiness for Atlantic Fleet ships and aircraft, food service operations, payroll, computer shipboard systems, ship stores, ordnance and fuel.

Soderberg is an independent consultant, with a primary focus on marketing, business development and strategic planning.

### YOUNG ALUMNI ACHIEVEMENT AWARD RECIPIENT

**KRISTI BERG**, assistant business information technology professor, graduated from MSU in 1995 with a Bachelor of Science in business education. She then taught at Meyer Vo-Tech and Quentin N. Burdick Job Corps. While at Job Corps, she began graduate studies and taught part time at MSU. After completing a Master of Science in management in 2000, Berg began teaching full time at MSU via on-campus, online and Minot Air Force Base classes. In 2011, she earned a doctorate in organization and management from Capella University, Minneapolis.



Involved on campus, Berg was Faculty Senate president in 2008-09. As Curriculum Committee chair, she was instrumental in the conversion from paper to electronic documentation. To remain current, she conducts research utilizing collaborative student-group experiences in her classes, publishes research articles and presents at conferences. Her real passion is engaging students, so she advises Collegiate DECA.

Within the community, the Minot native chaired Young Professionals-Minot's Community Links Team and advanced "MSU Unity in Our Community." She worked with the Minot Area Community Foundation on its "Rebuilding Neighborhoods" initiative following the 2011 Mouse River Flood.

# Board of Directors



*Beaver Suites — opened August 2012.*

The Minot State University Development Foundation is a charitable educational foundation which exists to establish, promote and stimulate voluntary financial support for the benefit of Minot State University, especially in the building of endowments and in addressing the long-term priorities of the university.

Beaver Suites was constructed by the Minot State University Development Foundation in 2012 to offer affordable apartment living for students. The Development Foundation recognized the critical need for student housing following the Mouse River Flood of 2011, and moved quickly to provide this 32-unit, 96-bedroom apartment building. It is adjacent to the west side of the MSU campus.

FOUNDATION BOARD MEMBERS ■



Kathy Aas '11



Jon Backes '84



David Gowan '79



Karen Krebsbach '62



Tom Probst '67



David Reiten



Maynard Sandberg '55



Robert Sando



Doris Slaaten '49



Myron Thompson '67



Bruce Walker '66



Val Bruels  
*Ex-Officio*



Brian Foisy  
*Ex-Officio*



David Fuller  
*Ex-Officio*



Ryan Hertz '00  
*Ex-Officio*



Marv Semrau  
*Ex-Officio*



**Minot State**  
**UNIVERSITY**

Our Place. Our Legacy. Our Vision.

**Alumni Association**  
**Development Foundation**

500 University Ave W  
Minot, ND 58707

*Change service requested*

Non-profit org.  
U.S. Postage  
PAID  
Permit No. 1890  
Fargo, ND 58102

Celebrating  
**100** years!



MINOT STATE UNIVERSITY is excited to celebrate this major milestone. We invite our greater community, students, alumni, faculty and staff to our Centennial Celebration events. Find the calendar and historical information at [www.minotstateu.edu/100](http://www.minotstateu.edu/100).

**Our Place ■ Our Legacy ■ Our Vision**

