

FACT BOOK



Be seen. Be heard. Be empowered.

Mission Statement

The Office of Institutional Research at Minot State University supports the university's planning and decision-making efforts so that the university can fulfill its larger mission. The office responds to requests from constituencies of the university in order to support decision making, assessment, policy analysis, effective management, projections and planning. It also responds to requests for information from outside agencies and other institutions and generates annual fact books and reports showing trends and comparisons to the North Dakota University System.

The goals of IR are to ensure that reports and analyses are accurate, timely and useful to Minot State University students, administrators, faculty and staff. To guarantee that MSU's mission is carried forward, the institutional research director works carefully to ensure that files dealing with student course and personnel data are as accurate and consistent as possible.

Accrediting Agencies

The Higher Learning Commission

30 N. LaSalle Street, Ste 2400, Chicago, IL
(800) 621-7440 — www.hlcommission.org

National Association of Schools of Music

11250 Roger Bacon Drive, Suite 21, Reston, VA 20190-5248

North Dakota Education Standards and Practices Board

2718 Gateway Avenue, Suite 204, Bismarck, ND 58503-0585, (701) 328-9641

Council for the Accreditation of Educator Preparation (CAEP)

1140 19th St NW, Suite 400, Washington, DC 20036

Council on Academic Accreditation of the American Speech-Language-Hearing Association

10801 Rockville Pike, Rockville, MD 20852-3279

Council on Social Work Education-Baccalaureate level

1600 Duke Street, Alexandria, VA 22314-3421

International Accreditation Council for Business Education

PO Box 25217, Overland Park, KS 66225, (913) 631-3009

Accreditation Commission for Education in Nursing, Inc. (formerly NLNAC)

3343 Peachtree Road NE, Suite 850, Atlanta, Georgia 30326

National Association of School Psychologists

PO Box 791089, Baltimore, MD 21279-1089

North Dakota Board of Nursing

919 7th Street, Suite 504, Bismarck, ND 58504-5881

National Addiction Studies Accreditation Commission (NASAC)

1001 North Fairfax Street, Suite 201, Alexandria, VA 22314

Administrative Offices

Academic Affairs

Vice President for Academic Affairs -----	Laurie Gellar
Associate Vice President for Graduate, Enrollment, and Marketing.....	Jacek Mrozik
Executive Director, ND Center for Persons with Disabilities -----	Lori Garnes
Chair, Library-----	Jane la Plante
Director, Academic Support Center -----	Beth Odahlen
Director, Office of Sponsored Programs -----	Amy Armstrong
Registrar -----	Rebecca Ringham
Director, Institutional Research -----	Cari Olson
POWER and TRiO-----	Vacant

College of Arts and Sciences

Chair, Division of Art, Broadcasting, and Professional Communication---	Bill Harbort
Chair, Division of Languages and Cultural Studies-----	Robert Kibler
Chair, Department of Mathematics and Computer Science -----	Darren Seifert
Chair, Division of Music-----	Erik Anderson
Chair, Department of Science-----	Bryan Schmidt
Chair, Department of Biology-----	Paul Lepp
Chair, Division of Social Science -----	Dan Ringrose
Chair, Department of Criminal Justice-----	Gary Rabe
Director, Northwest Arts Center -----	Greg Vettel

College of Business

Chair, Department of Accounting and Finance-----	Jay Wahlund
Chair, Department of Business Information Technology-----	Lori Willoughby
Chair, Business Administration -----	Lori Willoughby

College of Education and Health Sciences

Chair, Department of Communication Disorders -----	Mary Huston
Chair, Department of Teacher Education and Kinesiology-----	Terry Eckmann
Coordinator, Master of Education Program-----	Dan Conn
Coordinator, Elementary Education Program -----	Kathy Hintz
Coordinator, Physical Education and Human Performance Program -----	Terry Eckmann
Director, Teacher Education Unit-----	Lisa Borden-King
Director, Advisement and Field Placement -----	Kathy Hintz
Chair, Department of Addiction Studies/Psych/Social Work -----	Paul Markel
Director, Addiction Studies -----	Warren Gamas
Director, Social Work -----	Nancy Gordon
Chair, Department of Nursing -----	April Warren
Department of Special Education-----	Holly Pedersen

Interdisciplinary Programs

Director, Honors Program in Engagement and Scholarship (HOPES) ----- Jessica Smestad
 Director, Individualized Studies ----- John Webster
 Director, General Studies----- John Webster

Student Affairs

Vice President for Student Affairs ----- Kevin Harmon
 Counselor, Student Development ----- Nancy Mickelson
 Dining Services (Sodexo) ----- Alan Anderson
 Director, International Programs----- Libby Claerbout
 Director, Multicultural Support Services ----- Annette Mennem
 Director, Residence Life ----- Karina Stander
 Coordinator, Residence Life----- Abby Graves
 Director, Student Center ----- Leon Perzinski
 Coordinator, Student Activities ----- Aaron Hughes
 Director, Student Health Center ----- Deb Haman
 Nurse Practitioner ----- Kelly Dickinson
 Director, Military Resource Center----- Andrew Heitkamp
 Director, Wellness Center----- Paul Brekke

Administration and Finance

Vice President for Administration and Finance ----- Brent Winiger
 Assistant Vice President, Business Services Controller ----- Jonelle Watson
 Director, Facilities Management ----- Brian Smith
 Director, Information Technology Center ----- George Withus
 ----- Darren Olson
 Director, Human Resources ----- Laurie Davis
 Director, Safety and Security ----- Gary Orluck
 Director, Financial Aid ----- Laurie Weber
 Manager, Bookstore ----- Tiffany Heth

Advancement

Vice President for Advancement ----- Rick Hedberg
 Director, Publications and Design ----- Doreen Wald
 Director, University Communications----- Michael Linnell
 Director, Alumni & Annual Giving ----- Janna McKechnie
 Officer, Major Gifts ----- Steve Lipp
 ----- Jeremy Feller
 Coordinator, Advancement ----- Kate Marshall

Graduate School, Enrollment, and Marketing

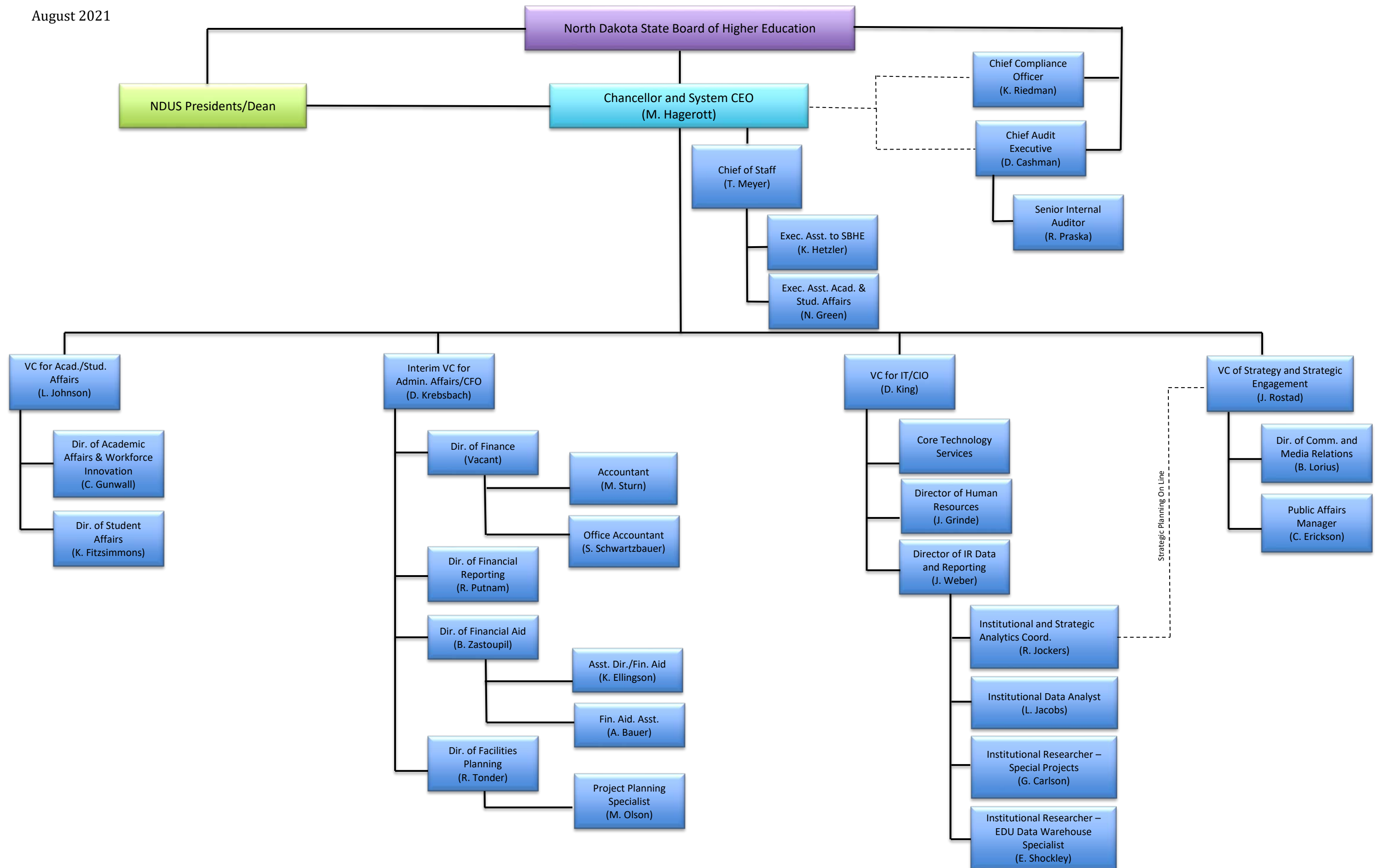
Associate Vice President.....Jacek Mrozik

Director, Enrollment Services -----
 Director, Marketing ----- Cole Krueger

University Athletics

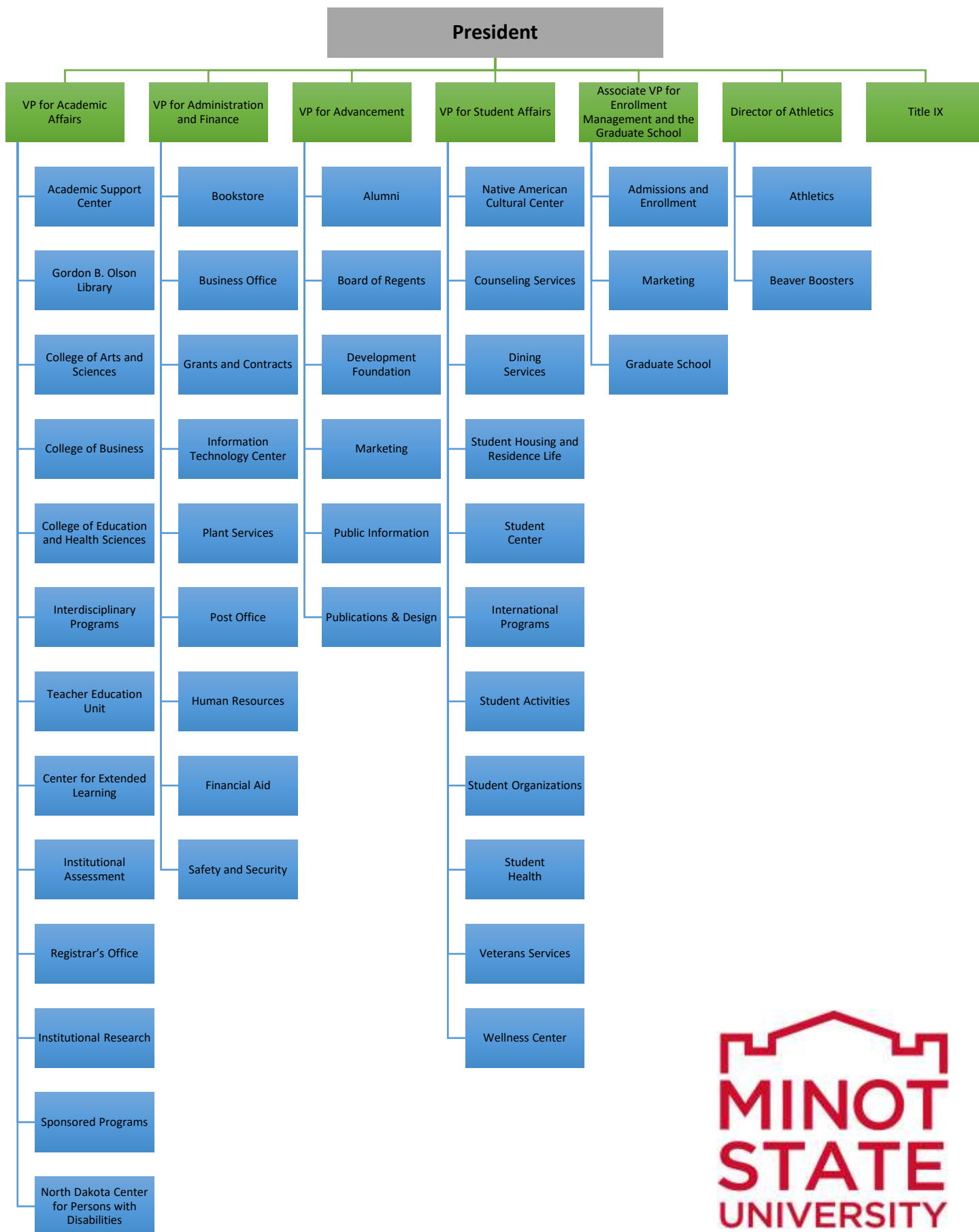
Director, Athletics ----- Andy Carter
 Assistant Athletic Director for Development----- Brock Wepler
 Assistant Director for Internal Operations----- Andrew Petko
 Coordinator of Athletic Operations----- Ryan Beckner
 Faculty Athletic Representative----- Dean Frantsvog
 Coordinator of Sports Information-----Mike Stetson
 Communications & Media Relations Photographer----- Sean Arbaut
 Head Baseball----- Scott Eul
 Head Men’s Basketball----- Matt Murken
 Head Women’s Basketball ----- Mike Brandt
 Head Cross Country & Track & Field----- Mark Del Monaco
 Head Football ----- Mike Aldrich
 Head Men’s Golf ----- Brandon Polzin
 Head Women’s Golf ----- Brandon Polzin
 Head Women’s Soccer ----- Chris Clements
 Head Softball ----- Nat Wagner
 Head Volleyball ----- Dana Cordova
 Head Women’s Hockey----- Ryan Miner
 Head Men’s Hockey----- Wyatt Waselenchuk
 Head Men’s Wrestling ----- Evan Forde
 Head Women’s Wrestling -----Brittney Mitchem

August 2021



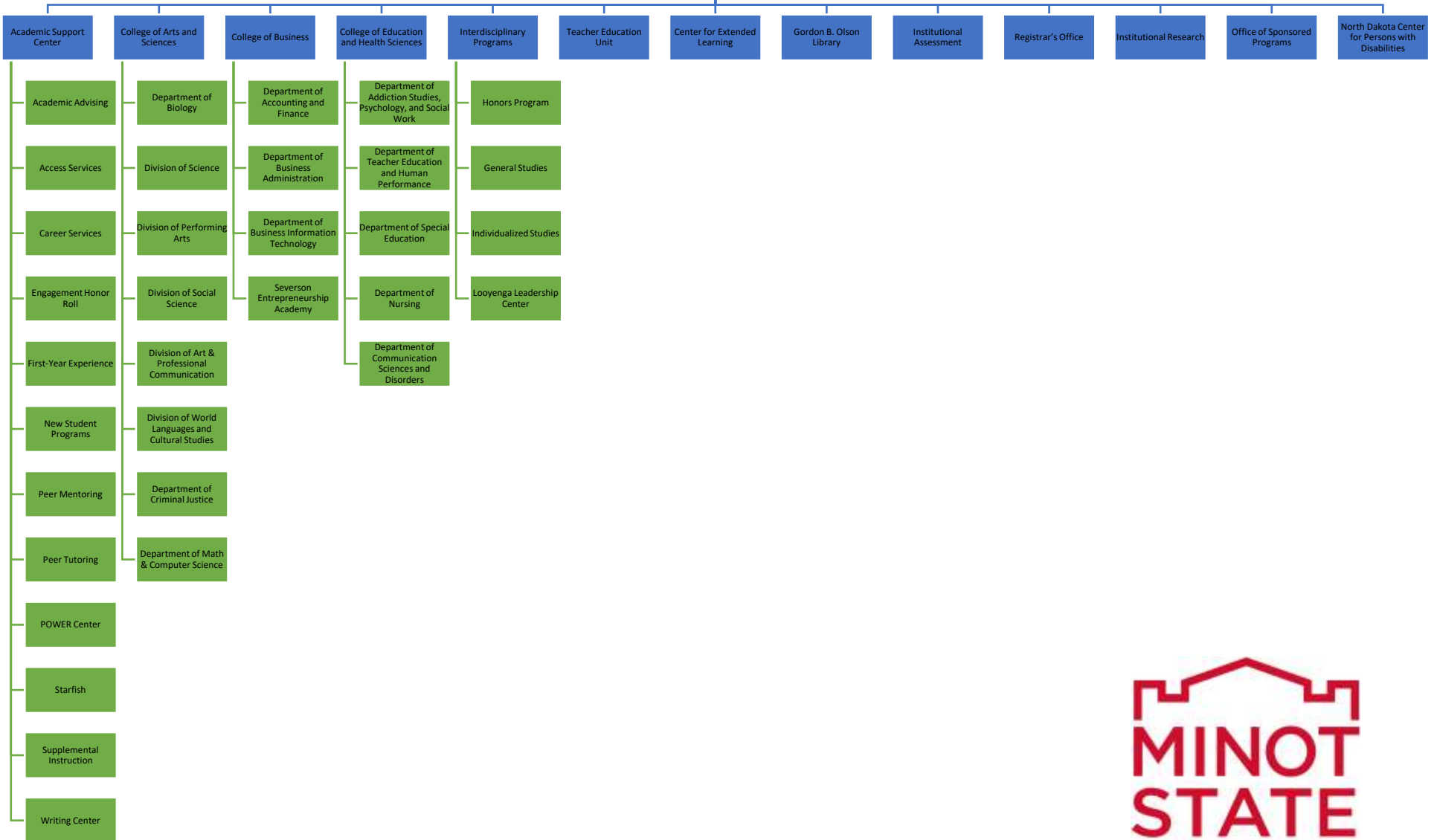
— Direct Report

- - - - - Administrative Report



Minot State University – Organizational Chart 2021-2022

VP for Academic Affairs





*Board of Regents
Executive Committee*

Executive Chair-----	Brenda Foster
Past Executive Chair-----	Jarid Lundeen
MSU President-----	Steven Shirley
Treasurer-----	Brent Winiger
Secretary-----	Rick Hedberg
Chair-Elect-----	Tom Rafferty
Member-at-Large-----	Randy Burckhard

*MSU Alumni Association
Board of Directors*

Executive Committee

Past President-----	Chelsea Kirkhammer
President-----	Jaimie Jundt Brunner
President Elect-----	Sabrina Hermann
Vice President for Promotions-----	Ben Berg
Vice President for Events-----	Mat Jensen
Vice President for Outreach-----	Sabrina Hermann
Director of Annual Giving and Alumni Relations-----	Janna McKechnie
MSU President-----	Steven Shirley

Members

Pam Andrist, Breanna Benson, Ben Berg, Kristi Berg, Jaimie Jundt Brunner, Jason Burckhard, Niki Carlson, Julie Drady, Brandi Fjeld, Greg Fjeld, Sabrina Hermann, Kelsey Holt, Mat Jensen, Chelsea Kirkhammer, Kari Lysne, Danielle Rued, Janelle Verhey, Trent Westmeyer, Audra Wyman



MSU Development Foundation

Board of Directors

Executive Director -----	Rick Hedberg
President -----	Jon Backes
Vice President-----	Dan Langemo
Treasurer-----	Brent Winiger
Investment Advisory Committee-----	Dan Langemo
Special Gifts Committee -----	Robert Sando
Development Strategies Committee -----	Karen Krebsbach
Nominating Committee-----	Kathy Aas
MSU President-----	Steve Shirley

MEMBERS

Kathy Aas	Ex-Officio
Jon Backes	Rick Hedberg
David Gowan	Steve Shirley
Karen Krebsbach	Brent Winiger
Jarid Lundeen	Jaimie Jundt Bruner, Alumni Chair
Leslie Coughlin	Brenda Foster, Board of Regents Chair
Tom Probst	
Robert Sando	
Myron Thompson	
Kent Kirkhammer	
Dan Langemo	

North Dakota University System (NDUS)

The staff of North Dakota University System supports the State Board of Higher Education's mission to enhance the quality of life for all those served by the NDUS as well as the economic and social vitality of North Dakota. NDUS and its affiliated organizations are committed to providing quality higher education as they work with the 11 institutions that serve our students. To view the NDUS organizational chart and about the organizational structure of the system staff and the individuals who comprise the team visit <https://ndus.edu/ndus-overview/ndus-office-staff/> .



North Dakota University System Fall Enrollment by Headcount

Institution	2006	2007 ¹	2008	2009	2010	2011	2012	2013	2014	2015	2016	2017	2018	2019	2020	2021
Bismarck State College	3,477	3,591	3,788	4,020	4,177	4,392	4,109	4,062	4,002	4,078	3,976	3,756	3,778	3,739	3,716	3,549
Dickinson State University	2,572	2,670	2,730	2,767	2,688	2,346	1,837	1,449	1,479	1,317	1,386	1,425	1,392	1,350	1,441	1,415
Lake Region State College	1,508	1,520	1,657	1,702	1,913	2,056	1,974	1,898	1,988	1,918	1,947	1,972	2,072	1,982	1,771	1,621
Mayville State University	832	769	789	887	982	970	1,020	1,065	1,081	1,110	1,130	1,140	1,184	1,212	1,168	1,172
Dakota College at Bottineau	605	637	655	748	863	812	774	793	753	692	811	909	996	1,006	1,060	1,162
Minot State University	3,712	3,424	3,432	3,649	3,866	3,657	3,560	3,533	3,410	3,348	3,412	3,216	3,189	3,121	2,920	2,836
ND State College Of Science	2,490	2,417	2,545	2,651	2,833	3,127	3,066	3,168	3,033	3,123	3,003	2,985	2,957	2,977	2,829	2,802
North Dakota State University	12,258	12,527	13,229	14,189	14,407	14,399	14,443	14,629	14,747	14,516	14,432	14,358	13,796	13,173	12,846	12,461
University of North Dakota	12,834	12,559	12,748	13,172	14,194	14,697	15,250	15,143	14,906	14,951	14,648	14,406	13,847	13,581	13,615	13,772
Valley City State University	1,037	982	1,019	1,083	1,285	1,384	1,362	1,366	1,378	1,422	1,452	1,522	1,547	1,665	1,676	1,686
Williston State College	912	731	850	949	932	993	808	909	883	1,038	1,039	1,098	1,124	1,132	959	908
Total	42,237	41,827	43,442	45,817	48,140	48,833	48,203	48,015	47,660	47,513	47,236	46,787	45,882	44,938	44,001	43,384

Source: North Dakota University System Office Webpage.

Data Source: North Dakota University System. Headcount is the total number of students enrolled regardless of the number of credit hours. NDUS reports the headcount as the number of students enrolled on the 4th week of classes in the term.

¹ "Enrollment at some institutions includes students who were registered but had not made payment or been granted an extension based on documented good cause as of the census date. This includes 24 students at NDSU, 40 students at UND, 71 students at NDSCS and 239 students at LRSC for a total of 374 students." (Creating a University System for the 21st Century, 2007 Fall Enrollments, November 2007, p. 1)

Degrees Conferred
College of Education and Health Sciences

CIP Code	Program	2008	2009	2010	2011	2012	2013	2014	2015	2016	2017	2018	2019	2020	2021
13.1210	Early Childhood Education (BSE)							0	1	0	8	3	2	5	1
13.1210	Early Childhood Education (BS)							0	0	0	0	0	0	1	10
13.1001/6	Special Education (BSE)	7	10	11	13	7	9	4	12	11	11	10	5	7	1
13.1099	Human Services: Intellectual and Developmental Disabilities (AS, BS through 2010)* (BS only 2011 on)	2	9	3	1	2	3	3	6	3	6	4	3	4	11
13.1099	Human Services: Intellectual and Developmental Disabilities (AS)*				1	1	1	1	3	0	3	1	0	2	0
13.1202	Elementary Education (BSE)	56	48	42	44	25	47	41	49	49	52	41	37	37	37
13.1314	Physical Education (BSE)	12	9	20	12	13	12	11	17	17	11	6	13	7	13
31.0504	Corporate Fitness (BS)	10	11	9	10	16	18	13	16	12	15	26	23	16	20
42.0101	Psychology (BA)	20	17	18	13	15	10	23	18	7	17	11	11	15	10
44.0701	Social Work (BSW)	21	24	17	27	29	31	60	68	46	49	62	50	60	78
51.0201	Communication Disorders (BS)	30	17	26	26	41	22	41	16	21	9	29	18	13	16
51.0913	Athletic Training (BS) (New Program 12/2008)				0	3	3	5	4	2	2	3	3	5	2
51.1501	Addiction Studies (BS)	1	4	5	6	7	2	9	11	10	9	5	10	9	3
51.3801	Nursing (BSN)	34	42	33	43	48	63	65	58	73	56	55	50	54	58
16.1603	Interpreting and Sign Language Studies (BAS)	0	0	0	0	0	0	0	0	0	0	0	3	2	4
	Total Graduates by College	193	191	184	196	207	221	276	279	251	248	256	228	237	264

Data Source: Graduates by Major/Minor- as reported by the Registrar to NDUS for the annual publication of the "North Dakota University System: Programs Offered/Completed at North Dakota Institutions of Postsecondary Education." This report provides information on degree and certificate programs offered and student program completions for the fiscal year in North Dakota's public and private postsecondary educational institutions.

*Degrees Conferred –Second Major
College of Education and Health Sciences*

CIP	College of Education and Health Sciences	2010	2011	2012	2013	2014	2015	2016	2017	2018	2019	2020	2021
13.1001/6	Special Education	0	1	1	3	1	2	4	2	1	0	1	1
13.1202	Elementary Education	11	12	6	7	3	0	2	3	0	1	2	4
13.1210	Early Childhood Education					0	3	0	5	2	0	1	2
13.1314	Physical Education	0	1	0	4	1	3	0	0	0	0	0	0
31.0504	Corporate Fitness	2	2	3	2	0	2	2	0	0	1	2	0
42.0101	Psychology	1	3	1	3	1	3	1	0	2	0	1	0
51.0201	Communication Disorders			1	0	0	0	0	0	0	3	0	0
51.0913	Athletic Training			1	0	0	0	0	0	0	0	0	0
51.1501	Addication Studies	0	1	0	0	0	0	0	0	1	0	0	0
	Total	14	20	13	19	6	13	9	10	6	5	7	7

Data Source: Graduates by Major/Minor- as reported by the Registrar to NDUS for the annual publication of the “North Dakota University System: Programs Offered/Completed at North Dakota Institutions of Postsecondary Education.” This report provides information on degree and certificate programs offered and student program completions for the fiscal year in North Dakota’s public and private postsecondary educational institutions.

Degrees Conferred College of Arts and Sciences

CIP Code	Program	2006	2007	2008	2009	2010	2011	2012	2013	2014	2015	2016	2017	2018	2019	2020	2021
9.0101	Communication (BA)	2	1	1	1	3	1	0	0	1	0	4	3	1	2	2	0
9.0100	Broadcasting (BA)	9	3	4	12	9	10	7	8	9	16	7	6	6	9	7	7
10.9999	Multimedia Studies (BS)	0	0	0	1	1	1	0	0	0	0	1	0	1	2	0	1
11.0101	Computer Science (BS)	15	7	7	6	9	5	8	10	2	4	5	11	13	9	10	11
13.1302	Art Education (BSE)	1	3	1	3	2	5	4	3	2	1	3	1	1	1	2	1
13.1305	English Education (BSE)	6	6	3	5	2	8	3	5	2	4	5	5	5	5	6	3
13.1311	Mathematics Education (BSE)	5	6	6	6	10	7	2	4	3	5	2	6	4	5	3	2
13.1312	Music Education (BSE)	7	6	2	4	5	2	4	2	6	6	5	4	3	5	8	1
13.1316	Earth Science Education (BSE)	1	1	0	0	0	0	0	0	1	0	0	1	0	0	0	0
13.1317	Social Science Education (BSE)	0	4	0	1	3	1	0	0	0	0	1	2	0	4	1	1
13.1322	Biology Education (BSE)	3	0	1	2	4	2	0	3	6	3	4	2	7	1	0	1
13.1323	Chemistry Education (BSE)	0	0	0	0	0	0	0	0	2	1	0	0	0	1	1	0
13.1326	Foreign Language/German (BSE)	1	0	0	0	0	0	0	0	0	0	1	0	0	0	0	3
13.1328	History Education (BSE)	1	4	11	7	6	1	7	3	5	5	9	4	3	6	1	3
13.1399	Communication Arts (BSE)	1	1	0	0	0	0	1	0	0	0	0	0	0	0	0	0
16.0101	Foreign Language IA (BA)	0	0	0	0	0	0	0	0	0	0	0	1	1	1	0	1
16.0101	Foreign Language/Arabic (BA)						0	0	0	0	0	0	0	0	0	0	0
16.0501	Foreign Language/German (BA)	0	0	0	4	0	1	0	0	0	0	0	0	0	0	0	0
16.0905	Foreign Language/Spanish (BA)	0	1	2	1	0	2	3	0	3	4	1	0	1	1	0	0
23.0101	English (BA)	4	7	5	8	1	3	3	4	5	5	5	5	6	6	1	5
24.0102	General Studies (BGS)	25	27		20	24	22	23	20	19	16	20	24	20	27	26	21
26.0101	Biology (BA)	13	12	8	10	1	11	10	7	9	14	14	14	13	15	9	10
26.1199	Bioinformatices and						0	0	1	0	0	1	1	0	0	0	2
27.0101	Mathematics (BA)	1	2	5	2	5	1	5	4	4	2	5	10	4	5	2	2
40.0501	Chemistry (BA)	1	4	7	7	3	4	6	5	9	7	5	4	2	4	3	3
40.0601	Geology (BA)	0	0	28	2	5	6	1	4	5	8	2	6	2	4	4	1
43.0104	Criminal Justice (BS)	53	47	48	43	40	33	40	36	41	32	26	44	26	34	41	43
45.0101	Social Science (BA)	0	1	1	1	0	1	0	0	0	0	0	0	0	0	0	0
45.1101	Sociology (BA)	7	6	9	8	10	2	4	4	6	3	1	7	2	2	3	1
50.0501	Theatre Arts (BA)	1	2	1	3	1	4	3	1	2	4	3	1	1	1	0	0
50.0701	Art (BA)	3	4	6	2	8	N/A	3	4	5	10	1	5	5	4	7	1
50.0701	Art (BFA)	0	0	0	0	0	8	2	2	2	1	0	1	5	1	1	2
50.0901	Music (BA)	3	0	3	0	2	5	6	1	5	4	1	4	2	0	1	2
50.1002	Arts Administration (BS)	0	0	0	0	0	0	0	0	0	0	0	0	0	1	1	0
51.0911	Radiologic Technology (BS)	14	7	6	11	5	10	7	3	5	2	5	5	4	5	8	3
51.1005	Medical Laboratory Science (BS)	1	1	2	2	2	2	0	1	3	2	0	5	5	4	1	3
54.0101	History (BA)	5	3	4	6	7	11	9	6	7	3	14	6	6	3	7	8
13.133	Foreign Language/Spanish (BSE)	0	0	1	0	0	1	0	0	3	1	1	1	0	1	0	1
	Total Graduates by College	181	165	171	177	165	169	161	141	172	163	152	189	149	169	156	143

Data Source: Graduates by Major/Minor- as reported by the Registrar to NDUS for the annual publication of the “North Dakota University System: Programs Offered/Completed at North Dakota Institutions of Postsecondary Education.” This report provides information on degree and certificate programs offered and student program completions for the fiscal year in North Dakota’s public and private postsecondary educational institutions.

Degrees Conferred –Second Major College of Arts and Sciences

CAS Second Majors	2010	2011	2012	2013	2014	2015	2016	2017	2018	2019	2020	2021	
9.0101	Communication (BA)	0	0	0	0	0	0	1	0	0	0	1	0
9.0701	Broadcasting (BA)	1	0	0	0	1	0	1	0	0	1	0	0
10.9999	Multimedia Studies (BS)	0	0	0	0	0	0	0	0	0	0	0	0
11.0101	Computer Science (BS)	0	0	0	0	0	0	0	0	0	0	0	0
13.1302	Art Education (BSE)	0	0	0	0	0	1	0	0	1	0	0	0
13.1305	English Education (BSE)	0	0	1	0	0	0	0	0	0	0	0	0
13.1311	Mathematics Education (BSE)	0	0	0	0	0	1	0	1	0	0	0	0
13.1312	Music Education (BSE)	0	0	0	0	0	0	0	0	0	0	0	0
13.1316	Earth Science Education (BSE)	0	0	0	0	0	0	0	0	0	0	0	0
13.1317	Social Science Education (BSE)	0	0	0	0	0	0	1	0	0	0	0	0
13.1322	Biology Education (BSE)	0	0	0	0	0	0	0	0	0	0	0	0
13.1323	Chemistry Education (BSE)	0	0	0	0	0	0	0	0	0	0	0	0
13.1326	Foreign Language/German (BSE)	0	0	0	0	0	0	0	0	0	0	0	0
13.1328	History Education (BSE)	1	0	0	0	0	0	0	0	0	0	0	0
13.1399	Communication Arts (BSE)	0	0	0	0	0	0	0	0	0	0	0	0
16.0101	Foreign Language IA (BA)	0	0	0	0	0	0	0	0	0	0	0	0
16.0101	Foreign Lannguage/Arabic (BA)	0	0	0	1	0	0	0	0	0	0	0	0
16.0501	Foreign Language/German (BA)	0	0	0	0	1	1	0	0	0	0	0	0
16.0905	Foreign Language/Spanish (BA)	0	1	0	1	1	1	1	1	1	1	0	0
23.0101	English (BA)	0	0	1	0	0	0	0	0	0	0	0	0
24.0102	General Studies (BGS)	0	0	0	0	0	0	0	0	0	0	0	0
26.0101	Biology (BA)	0	0	1	1	3	1	0	2	0	1	0	0
26.1199	Bioinformatics and	0	0	0	0	0	0	0	0	0	0	0	0
27.0101	Mathematics (BA)	1	0	2	0	0	4	0	2	1	2	0	0
40.0501	Chemistry (BA)	0	2	1	0	1	3	1	2	1	0	0	0
40.0601	Geology (BA)	0	0	0	0	0	0	0	0	0	0	0	0
43.0104	Criminal Justice (BS)	3	0	0	0	0	0	0	0	0	0	0	0
45.0101	Social Science (BA)	0	0	0	0	0	0	0	0	0	0	1	0
45.1101	Sociology (BA)	3	1	3	2	1	1	0	1	0	0	1	0
50.0501	Theatre Arts (BA)	0	1	0	1	1	0	1	0	1	0	0	0
50.0701	Art (BA)	0	0	0	1	0	0	0	0	0	0	0	0
50.0701	Art (BFA)	0	0	0	0	0	0	0	0	0	0	0	0
50.0901	Music (BA)	1	0	0	0	0	0	1	1	0	0	0	0
50.1002	Arts Administration (BS)	0	0	0	0	0	0	0	0	0	0	0	0
51.0907	Radiologic Technology (BS)	0	0	0	0	0	0	0	0	0	0	0	0
51.1005	Clinical Laboratory Science (BS)	0	0	0	0	0	0	0	0	0	0	0	0
54.0101	History (BA)	0	0	0	0	0	1	1	0	0	0	1	0
13.1330	Foreign Language/Spanish (BSE)	0	0	0	0	0	1	0	0	0	0	0	0
Total		10	5	9	7	9	15	7	10	5	5	4	0

Data Sources: Graduates by Major/Minor- as reported by the Registrar to NDUS for the annual publication of the “North Dakota University System: Programs Offered/Completed at North Dakota Institutions of Postsecondary Education.” This report provides information on degree and certificate programs offered and student program completions for the fiscal year in North Dakota’s public and private postsecondary educational institutions.

Degrees Conferred College of Business

CIP Code	Program	2009	2010	2011	2012	2013	2014	2015	2016	2017	2018	2019	2020	2021
13.1303	Business Education (BSE)	3	1	2	6	2	4	2	2	2	3	2	2	0
52.0201	Management (BS)	72	50	51	49	57	59	49	53	50	56	69	51	43
52.0299	Applied Management (BAS)*	4	7	3	2	5	8	4	6	6	3	0	0	0
52.0301	Accounting (BS)	24	14	24	16	18	14	21	13	8	20	16	12	12
52.0801	Finance (BS)	23	14	10	8	10	10	9	25	13	17	10	11	12
52.0799	Entrepreneurship (BS)													3
52.0899	Energy Economics & Finance* (BS)	New '09	0	0	2	9	4	10	6	5	6	3	2	1
52.1101	International Business (BS)	21	25	3	4	6	8	6	6	5	11	14	3	3
52.1201	Management Information Systems (BS)	12	10	13	12	15	9	9	8	13	6	15	10	7
52.1299	Applied Business Info. Tech. (BAS)*	5	9	7	4	3	2	2	3	2	1	2	1	2
52.1401	Marketing (BS)	29	26	9	9	13	8	14	20	18	11	16	16	17
	Total Graduates by College	193	156	122	112	138	126	126	142	122	134	147	108	100

Data Sources: Graduates by Major/Minor- as reported by the Registrar to NDUS for the annual publication of the “North Dakota University System: Programs Offered/Completed at North Dakota Institutions of Postsecondary Education.” This report provides information on degree and certificate programs offered and student program completions for the fiscal year in North Dakota's public and private postsecondary educational institutions.

*Degrees Conferred College of Business
2nd Majors*

CIP	College of Business	2010	2011	2012	2013	2014	2015	2016	2017	2018	2019	2020	2021
13.1303	Business Education	0	1	0	0	1	0	0	0	0	0	1	0
52.0201	Management	0	13	11	7	6	9	4	4	7	9	7	7
52.0301	Accounting	1	1	0	0	0	1	0	0	1	0	0	2
52.0799	Entrepreneurship (BS)	0	0	0	0	0	0	0	0	0	5	4	9
52.0801	Finance	14	2	3	4	3	10	1	2	10	7	6	4
52.0899	Energy Economics and Finance	0	1	1	1	0	1	0	0	1	0	0	0
52.1101	International Business	2	31	29	31	30	22	15	11	8	8	6	11
52.1201	Management Information Systems	0	1	0	1	0	0	0	0	1	0	0	1
52.1299	Applied Business Information Technology	12	0	0	0	0	0	0	0	0	0	0	0
52.1401	Marketing	13	22	25	23	28	19	19	13	13	22	11	13
	Total	42	72	69	67	68	62	39	30	41	51	35	47

Data Sources: Graduates by Major/Minor- as reported by the Registrar to NDUS for the annual publication of the “North Dakota University System: Programs Offered/Completed at North Dakota Institutions of Postsecondary Education.” This report provides information on degree and certificate programs offered and student program completions for the fiscal year in North Dakota’s public and private postsecondary educational institutions.

Undergraduate Degrees Conferred

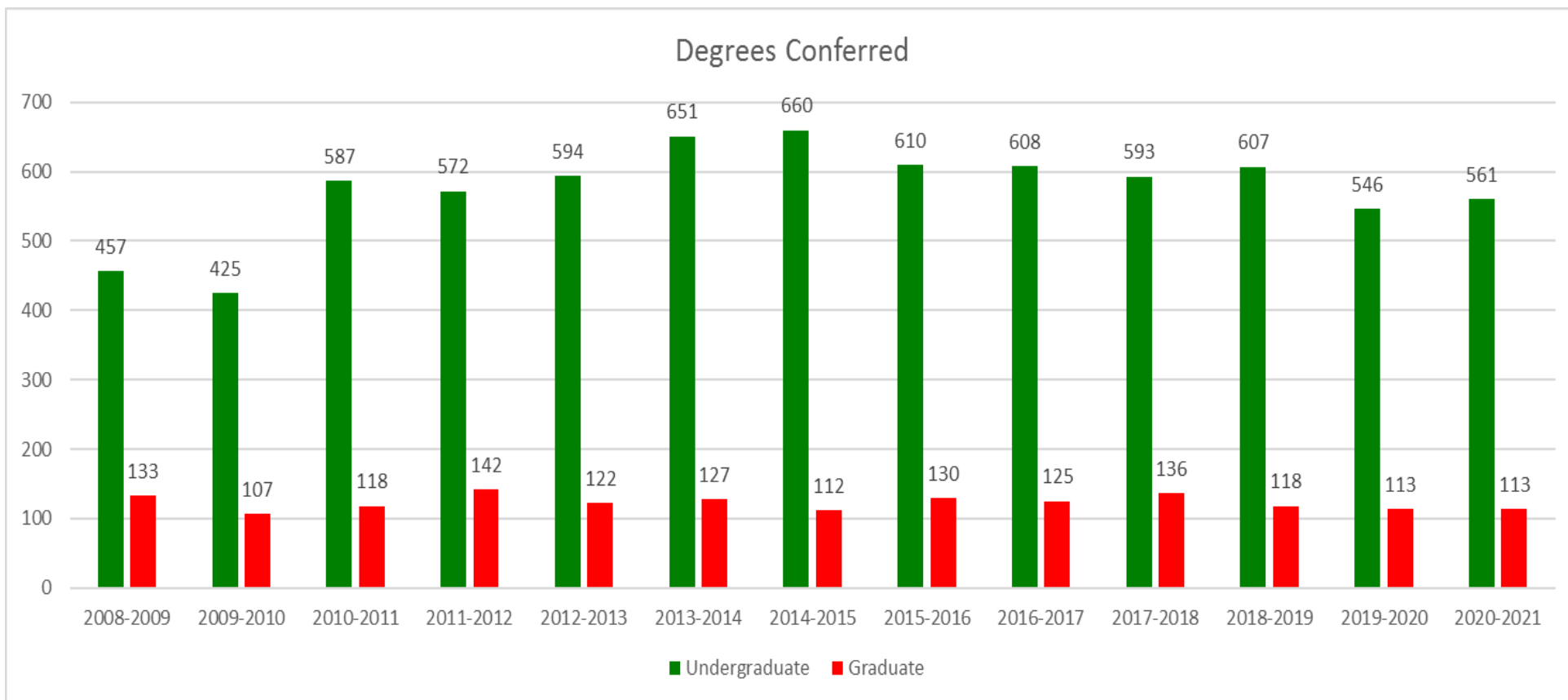
Undergraduate Degrees	2011	2012	2013	2014	2015	2016	2017	2018	2019	2020	2021
Associate of Arts (AA)	0	0	0	0	0	0	0	0	0	0	0
Associate of Science (AS)	1	1	1	1	3	2	3	1	0	2	0
Bachelor of Arts (BA)	90	82	65	102	109	76	97	65	72	65	51
Bachelor of Applied Science (BAS)	10	6	8	10	6	9	8	5	5	3	6
Bachelor of Fine Arts (BFA)	2	2	2	2	1	0	1	5	1	1	2
Bachelor of General Studies (BGS)	22	23	20	19	16	20	24	20	30	26	21
Bachelor of Science (BS)	274	299	295	302	279	262	249	242	310	249	270
Bachelor of Science Education (BSE)	118	82	109	90	120	122	120	86	89	85	75
Bachelor of Science Nursing (BSN)	43	48	63	65	58	73	56	55	50	55	58
Bachelor of Social Work (BSW)	27	29	31	60	68	46	50	62	50	60	78
Total	587	572	594	651	660	610	608	541	607	546	561

Data Source: NDUS Grads by Major Minor Report for academic year- pivoted by academic plan

Undergraduate Certificates Awarded

CIP	Certificate Programs	2003	2004	2005	2006	2007	2008	2009	2010	2011	2012	2013	2014	2015	2016	2017	2018	2019	2020	2021
11.0201	Computer Science Basic Programming	1	0	2	2	0	1	0	1	2	2	0	1	0	0	0	0	0	0	0
11.0801	Web Development	1	1	2	1	0	5	8	7	9	6	4	4	4	0	0	0	0	0	0
13.1099	Human Services: Intellectual and Developmental Disabilities								0	0	0	2	0	0	0	0	0	0	0	1
43.0199	Police Management & Investigations	0	0	0	0	0	0	1	0	0	0	0	0	0	0	0	0	0	0	0
52.0407	Application Software Specialist	1	9	9	6	2	3	8	7	9	12	13	9	5	1	0	0	0	0	0
52.0799	Entrepreneurship	0	0	0	0	0	0	0	0	0	0	0	0	0	0	0	0	6	4	3
52.1201	Information Assurance	0	0	0	0	0	0	0	0	0	0	0	0	0	0	0	0	1	1	0
	Totals	3	10	13	9	2	9	17	15	20	20	19	14	9	1	0	0	7	5	4

Data Source: NDUS Grads By Major- Minor



Data Source: Completions Data for NDUS Provided by Registrar’s Office. Graduation data for first majors is from the annual publication “North Dakota University System: Programs Offered/Completed at North Dakota Institutions of Postsecondary Education.” Data includes double majors and excludes certificate completers.

Fall Enrollment Headcount

	2010	2011	2012	2013	2014	2015	2016	2017	2018	2019	2020	2021	%Chg
Undergraduates	3551	3367	3298	3254	3116	3064	3136	2956	2915	2832	2656	2576	-3.0%
Graduates	315	290	262	279	294	284	276	260	274	289	264	260	-1.5%
Total Enrollment	3866	3657	3560	3533	3410	3348	3412	3216	3189	3121	2920	2836	-2.9%
Undergraduate Students													
Male Full-time	907	839	840	788	775	760	780	774	772	754	697	701	0.6%
Female Full-time	1539	1416	1338	1363	1300	1261	1241	1178	1207	1167	1139	1139	0.0%
Male Part-Time	461	490	438	466	460	430	472	416	384	355	311	236	-24.1%
Female Part Time	644	622	682	637	581	613	643	588	552	556	509	500	-1.8%
Unknown	0	0	0	0	0	0	0	0	0	0	0	0	0.0%
Graduate Students													
Male Full-time	26	23	23	38	35	32	37	32	29	26	29	35	11.5%
Female Full-time	85	78	78	84	81	75	74	78	85	79	83	86	5.1%
Male Part Time	41	44	54	52	72	69	56	58	64	72	49	34	-31.9%
Female Part Time	163	145	107	105	106	108	109	92	96	112	103	105	-8.0%

Data Source: NDUHSRA- Headcounts and FTE Enrollments Pg. 5 Institution Totals.-Data provided by Registrar's Office 4th Week Official Enrollment Data – September 2011.
 Headcount indicates all students enrolled regardless of the number of credit hours for which they are enrolled (NDUS) * Includes two classified as unknown (1 full-time and 1 part time)
 Percentage Change= Subtract old value from the new value, then divide by the old value, multiply by 100 for percentage. $\frac{\text{New Value}-\text{Old Value}}{\text{Old Value}} * 100 = \text{Percentage Change}$
 (<http://www.csgnetwork.com/percentchangepcalc.html>)

Headcount (HC) and Full-time Equivalent (FTE)

Year	Headcount	% Change	FTE	% Change
2003	3825	5.5	2839	1.8
2004	3851	0.7	2844	0.2
2005	3798	-0.8	2884	1.4
2006	3712	-2.3	2928	n/a
New FTE formula initiated in 2006				
2007	3424	-7.80%	2730	-6.80%
2008	3432	0.23%	2720.46	-0.30%
2009	3649	6.30%	2831.82	4.09%
2010	3866	5.90%	3002.15	6.01%
2011	3657	-5.40%	2794.6	-6.90%
2012	3560	-2.65%	2730.71	-2.28%
2013	3533	-0.76%	2710.12	-0.75%
2014	3410	-3.48%	2600.28	-4.05%
2015	3348	-1.82%	2570.43	-1.15%
2016	3412	1.91%	2591.96	0.84%
2017	3216	-5.74%	2467.38	-4.81%
2018	3189	-0.84%	2482.86	0.63%
2019	3121	-2.13%	2399.31	-3.37%
2020	2920	-6.44%	2273.08	-5.26%
2021	2836	-2.88%	2241.55	-1.39%

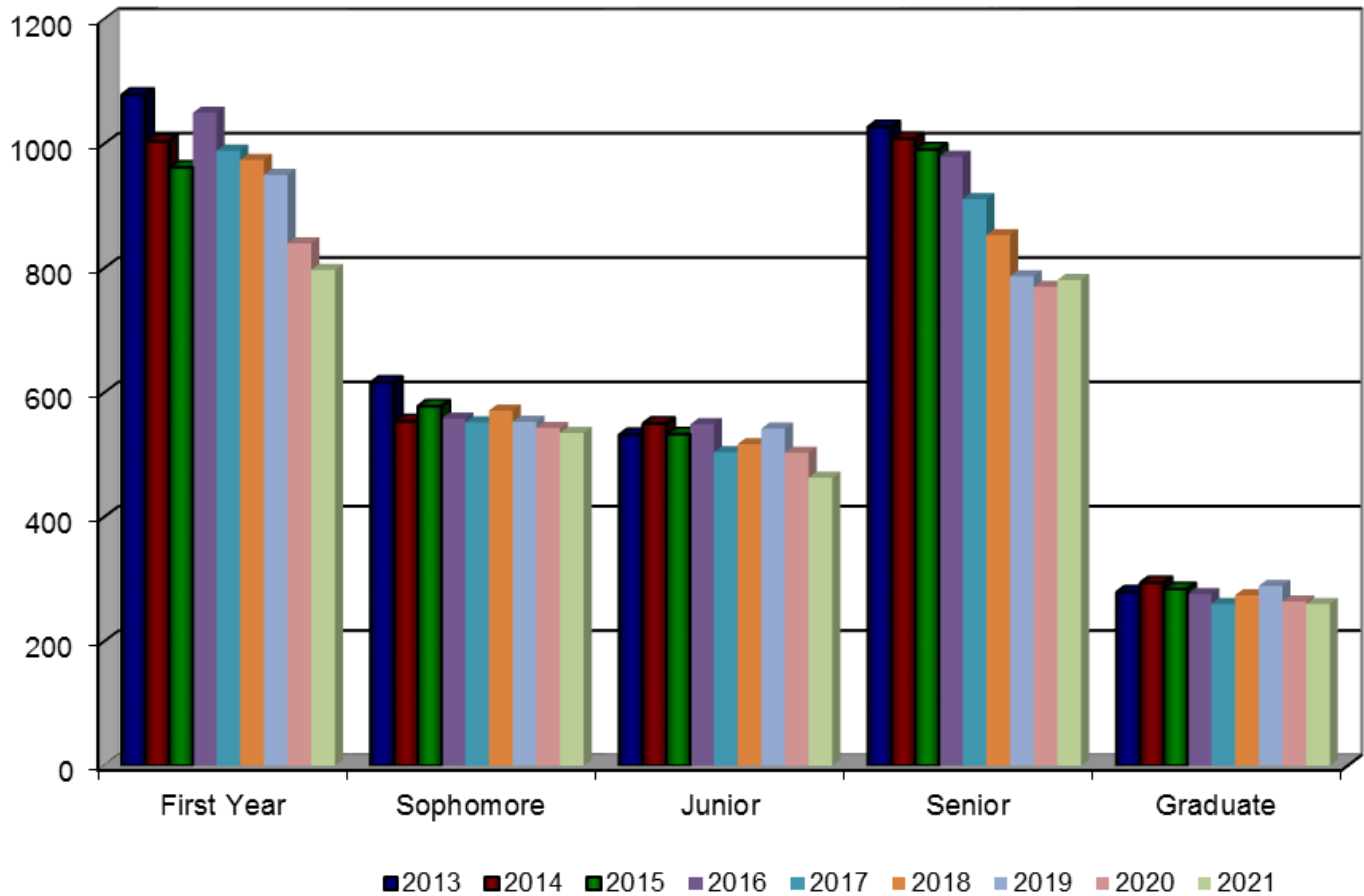
Graduate and Undergraduate Combined

Data Source: NDUHSRA- Headcounts and FTE Enrollments Pg. 5 Institution Totals (4th Week Data)
 Headcount indicates all students enrolled regardless of the number of credit hours for which they are enrolled (NDUS)
 Percentage Change= <http://www.csgnetwork.com/percentchange.html>

Headcount Enrollment by Classification

	2009	2010	2011	2012	2013	2014	2015	2016	2017	2018	2019	2020	2021
First Year	1095	1152	1125	1095	1079	1004	962	1050	989	974	950	840	797
Sophomore	659	720	630	610	616	554	578	558	552	571	553	543	535
Junior	579	575	563	532	532	550	533	549	504	517	542	503	463
Senior	1012	1104	1049	1061	1027	1008	991	979	911	853	787	770	781
Graduate	304	315	290	262	279	294	284	276	260	274	289	264	260

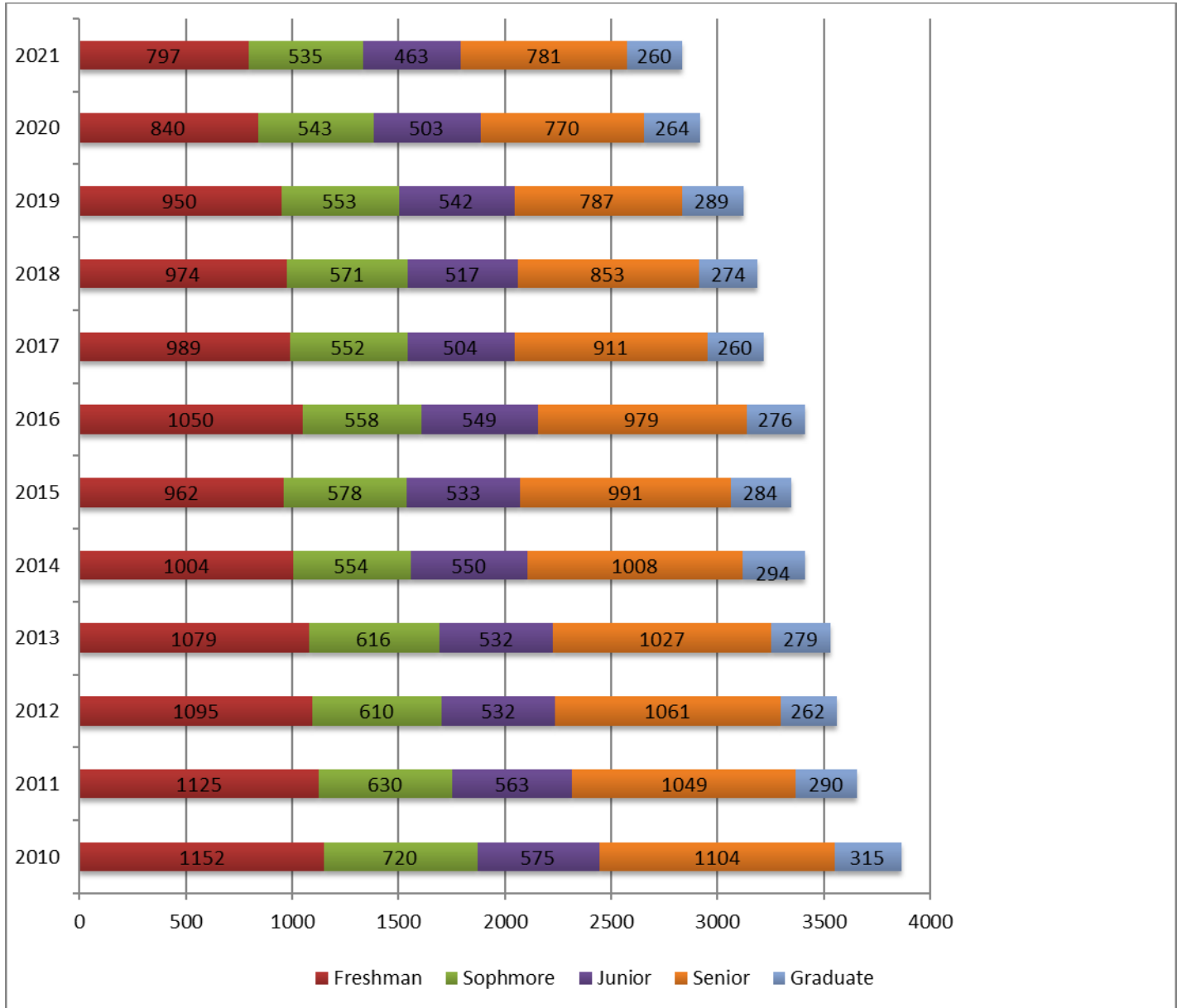
Total Students by Academic Status



Source: Enrollment Report NDUH2SRA, Page 5 (4th Week Data)

Headcount Enrollment by Level

Headcounts include all students enrolled (FT and PT)

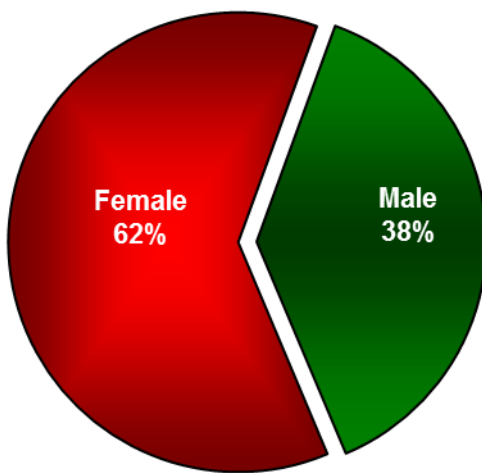


Source: NDUHSRA- Headcounts and FTE Enrollments Pg. 5 Institution Totals- (4th Week Data). Undergraduate Special (UG Special) refers to an individual who has previously earned a bachelor’s degree and is taking additional undergraduate coursework. PeopleSoft includes these students in Senior Status.

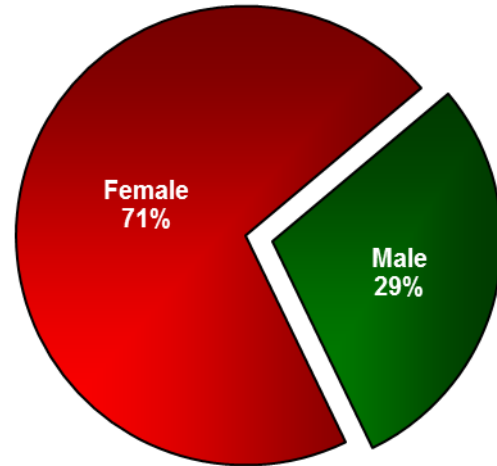
Enrollment by Gender *Fall 2021*

Full-time - Enrolled in 12-24 Semester Hours
Part-time-Enrolled in 1-11 Semester Hours

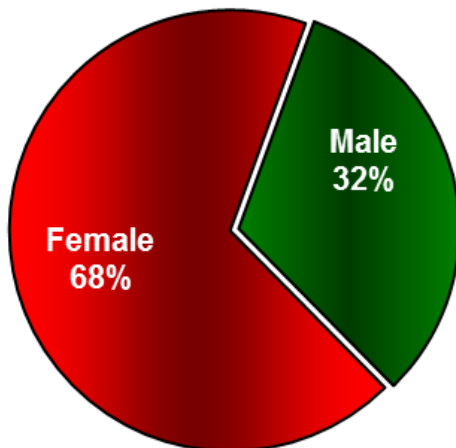
Undergraduate FT Enrollment



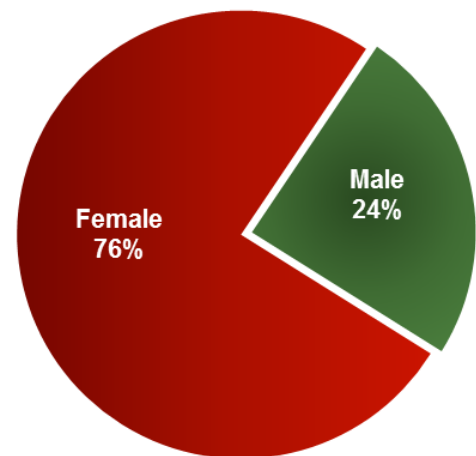
Graduate FT Enrollment



Undergraduate PT Enrollment



Graduate PT Enrollment



Source:

NDUHSRA- Headcounts and FTE Enrollments Pg. 5 Institution Totals-
Registrar's Office 4th Week Official Enrollment Report

Students by Residency

	2005	2006	2007	2008	2009	2010	2011	2012	2013	2014	2015	2016	2017	2018	2019	2020	2021	% chg
Total North Dakota	3165	2972*	2777	2779	2913	2970	2731	2500	2353	2236	2117	2209	2123	2134	1808	1658	1650	-0.48%
Male	1126	1053	967	1020	1057	1089	1043	948	902	871	767	813	801	815	595	521	494	-5.18%
Female	2039	1917	1810	1759	1856	1881	1688	1552	1451	1365	1350	1396	1322	1319	1213	1137	1156	1.67%
Total ND Military										289	282	348	340	351	306	255	206	-19.22%
Male										180	166	203	203	206	165	133	92	-30.83%
Female										109	116	145	137	145	141	122	114	-6.56%
Total Non-Resident	633	740	647	653	736	896	926	1060	1180	1174	1231	1196	1135	1039	1007	1007	979	-2.78%
Male	257	305	243	266	283	346	353	407	442	471	524	530	479	456	447	432	420	-2.78%
Female	376	435	404	387	453	550	573	653	738	703	707	665	656	583	560	575	559	-2.78%
Canadian Residents	225	255	234	280	293	309	299	275	278	258	238	208	186	184	192	185	186	0.54%
British Columbia	7	14	5	4	5	12	9	12	14	17	14	8	6	8	5	5	6	20.00%
Alberta	3	12	12	23	27	33	32	31	29	22	24	24	24	26	32	29	31	6.90%
Saskatchewan	173	176	163	166	183	189	189	175	174	159	136	122	105	95	92	80	81	1.25%
Manitoba	37	44	43	58	61	67	64	53	57	56	54	47	41	45	54	61	57	-6.56%
Ontario	4	7	8	8	6	7	3	2	2	3	6	5	8	8	6	6	6	0.00%
New Brunswick	1	0	0	0	0	0	0	0	1	1	0	0	1	1	2	2	2	0.00%
Quebec	0	2	3	2	3	2	2	1	1	0	0	1	0	0	0	0	0	0.00%
Nova Scotia	0	0	0	0	0	0	0	1	0	0	0	1	1	1	1	1	1	0.00%
Yokon	0	0	0	0	0	0	0	0	0	0	0	0	0	0	0	0	2	0.00%

Source: NDU02SRD Student Data Statistics- Enrollment Residency-(4th Week Data).

Note: PeopleSoft does not separate ND and Military from ND residents. Total nonresident includes all enrollments minus ND and military.

* Includes two students who did not identify gender. The “Total Non-Resident” category contains all students that are not residents of ND, including: out-of-state and international (including Canadian).Percentage change: <http://www.csgnetwork.com/percentchange.html>

Minot State University Enrollment Highlights Fall Enrollment

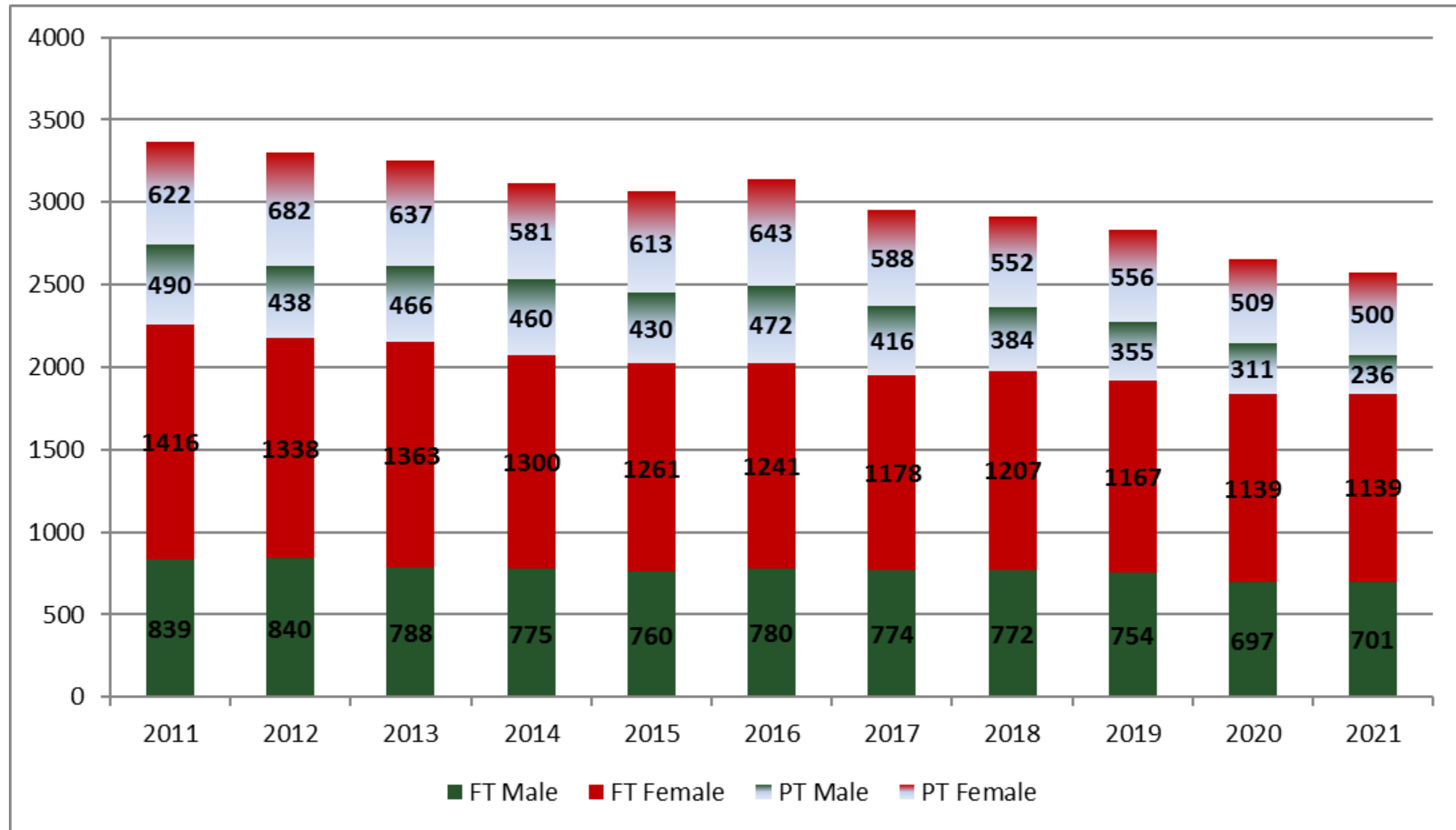
	Headcount			Full-Time			Part-Time			Total Scheduled Cr Hr		
	2021	2020	Change	2021	2020	Change	2021	2020	Change	2021	2020	Change
Freshmen												
Male	321	353	-32	191	176	15	130	177	-47	3368	3385	-17
Female	476	487	-11	239	247	-8	237	240	-3	4776	4798	-22
Total	797	840	-43	430	423	7	367	417	-50	8144	8183	-39
Sophomore												
Male	196	206	-10	173	187	-14	23	19	4	2684	2858	-174
Female	339	337	2	267	280	-13	72	57	15	4343	4572	-229
Total	535	543	-8	440	467	-27	95	76	19	7027	7429	-402
Junior												
Male	170	182	-12	150	154	-4	20	28	-8	2321	2433	-112
Female	293	321	-28	238	262	-24	55	59	-4	3914	4253	-339
Total	463	503	-40	388	416	-28	75	87	-12	6235	6687	-452
Senior												
Male	250	267	-17	187	180	7	63	87	-24	3083	3130	-47
Female	531	503	28	395	350	45	136	153	-17	6543	5973	570
Total	781	770	11	582	530	52	199	240	-41	9626	9103	523
TOTAL UNDERGRADUATES												
Male	937	1008	-71	701	697	4	236	311	-75	11456	11806	-350
Female	1639	1648	-9	1139	1139	0	500	509	-9	19576	19596	-20
Total	2576	2656	-80	1840	1836	4	736	820	-84	31032	31402	-370
TOTAL GRADUATES												
Male	69	78	-9	35	29	6	34	49	-15	532	607	-75
Female	191	186	5	86	83	3	105	103	2	1541	1548	-7
Total	260	264	-4	121	112	9	139	152	-13	2073	2155	-82
MINOT STATE UNIVERSITY TOTAL												
Male	1006	1086	-80	736	726	10	270	360	-90	11988	12413	-425
Female	1830	1834	-4	1225	1222	3	605	612	-7	21117	21144	-27
Total	2836	2920	-84	1961	1948	13	875	972	-97	33105	33557	-452

Registrar's Office: Enrollment Report ID# NDUH2SRA pg 5 (4th Week Data)

* FTE/Total refers to full-time equivalent of total credit hour production (Total undergraduate credit hours divided by 16 or Total graduate credit hours divided by 12.). "Total credit hours" is the number of credit hours the full-time and part-time students enrolled in.

<http://www.csgnetwork.com/percentchange.html> FTE numbers were calculated by dividing total credit hours from first table by 15 for undergraduates and by 12 for graduates. Prior to 2006, the calculation was 16 for undergraduates and 9 graduates

Enrollments by Gender and Enrollment Status Undergraduates

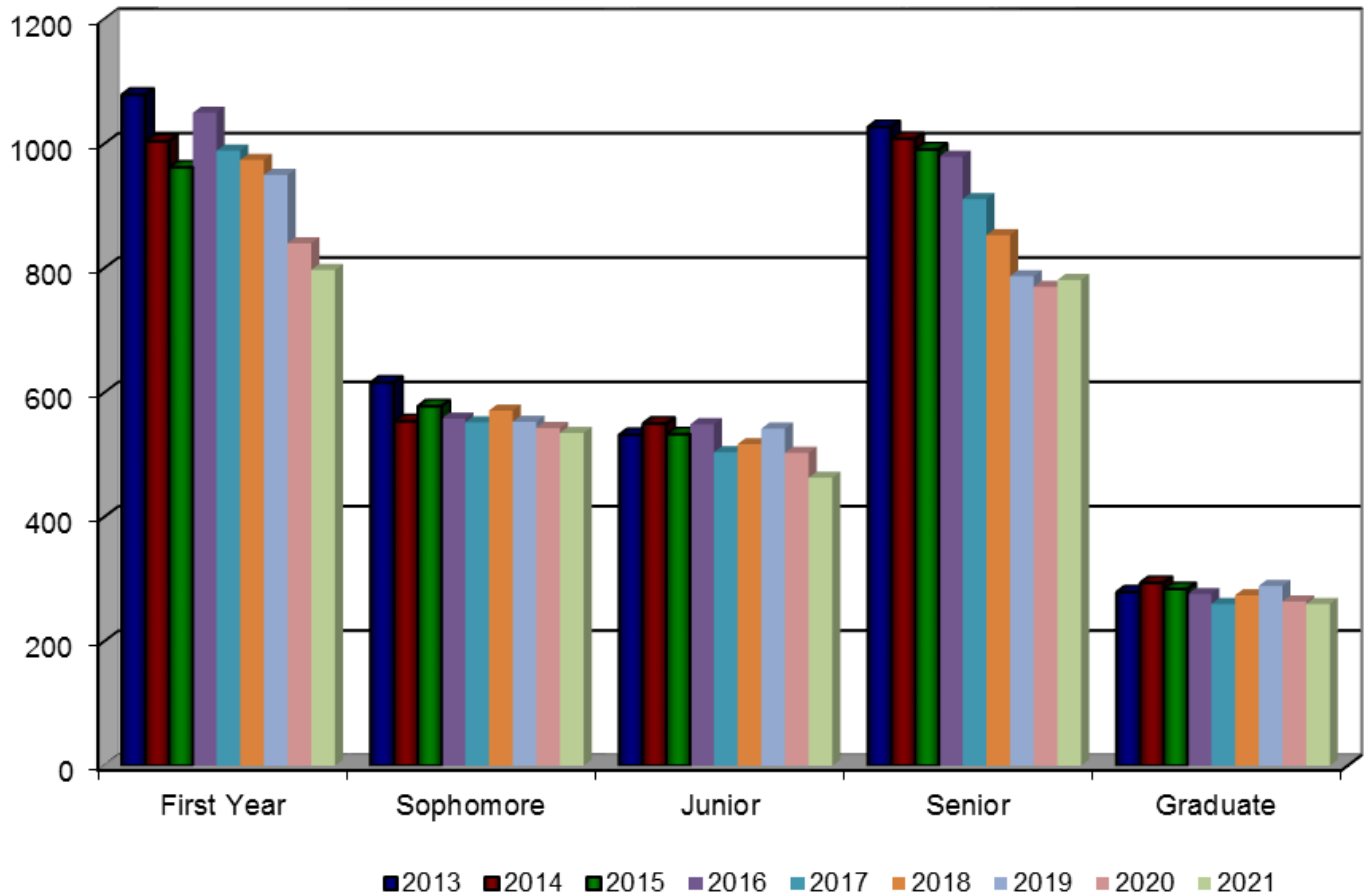


Source: NDUHSRA- Headcounts and FTE Enrollments Pg. 5 Institution Totals (4th Week Data)

Headcount Enrollment by Classification

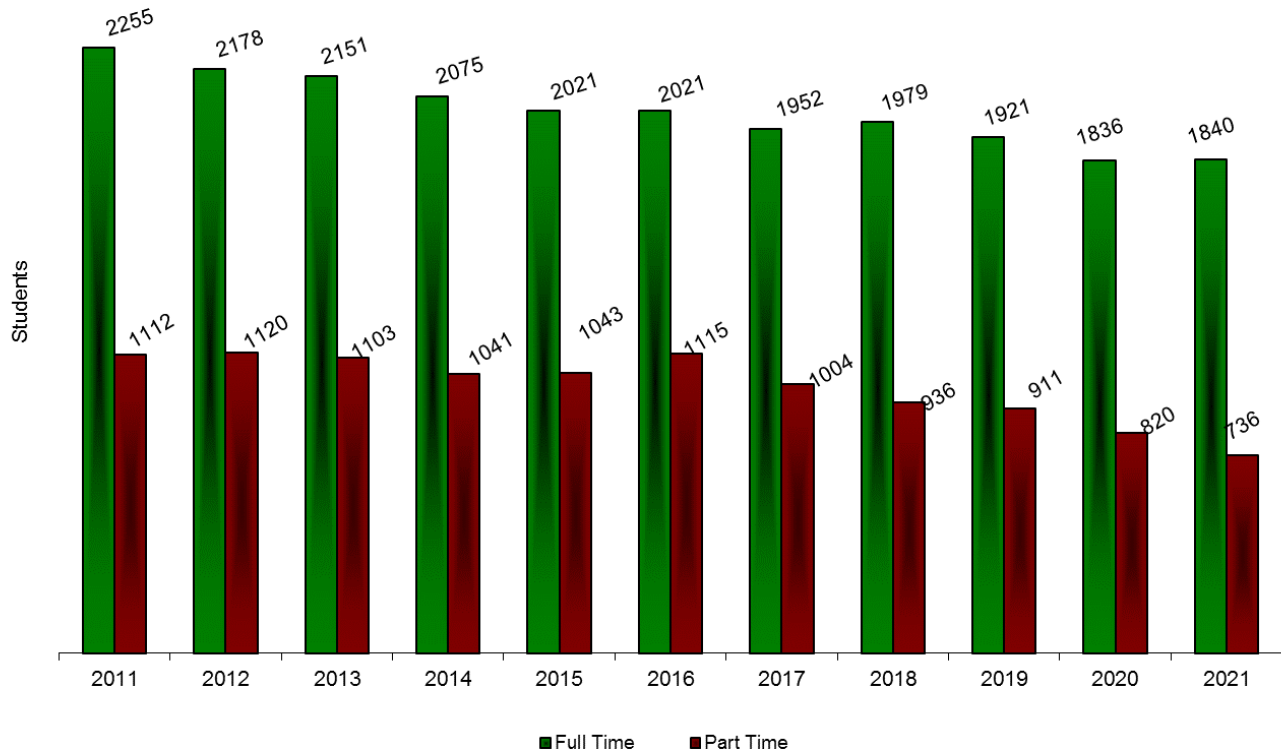
	2009	2010	2011	2012	2013	2014	2015	2016	2017	2018	2019	2020	2021
First Year	1095	1152	1125	1095	1079	1004	962	1050	989	974	950	840	797
Sophomore	659	720	630	610	616	554	578	558	552	571	553	543	535
Junior	579	575	563	532	532	550	533	549	504	517	542	503	463
Senior	1012	1104	1049	1061	1027	1008	991	979	911	853	787	770	781
Graduate	304	315	290	262	279	294	284	276	260	274	289	264	260

Total Students by Academic Status

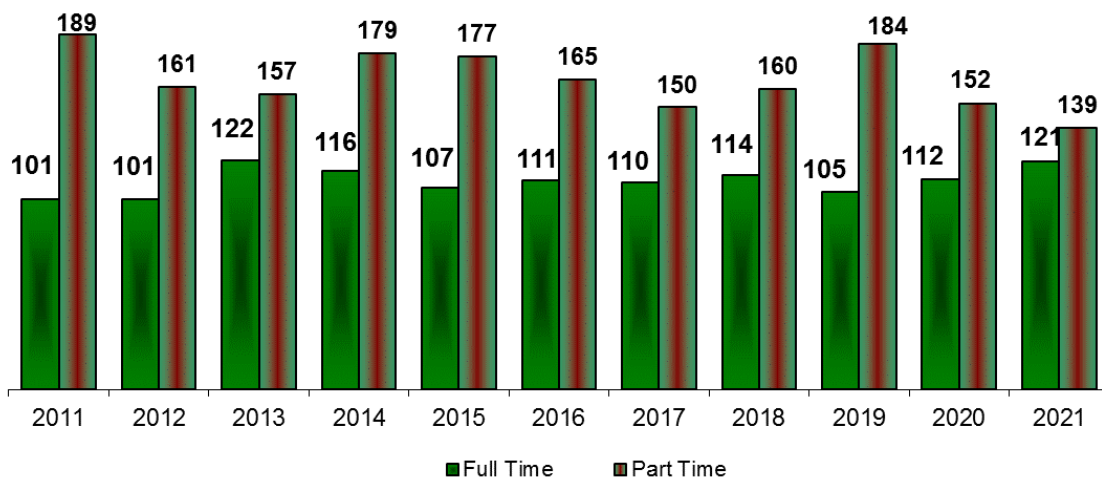


Source: Enrollment Report NDUH2SRA, Page 5 (4th Week Data)

*Total Full-time/Part Time Status
Undergraduate Students*

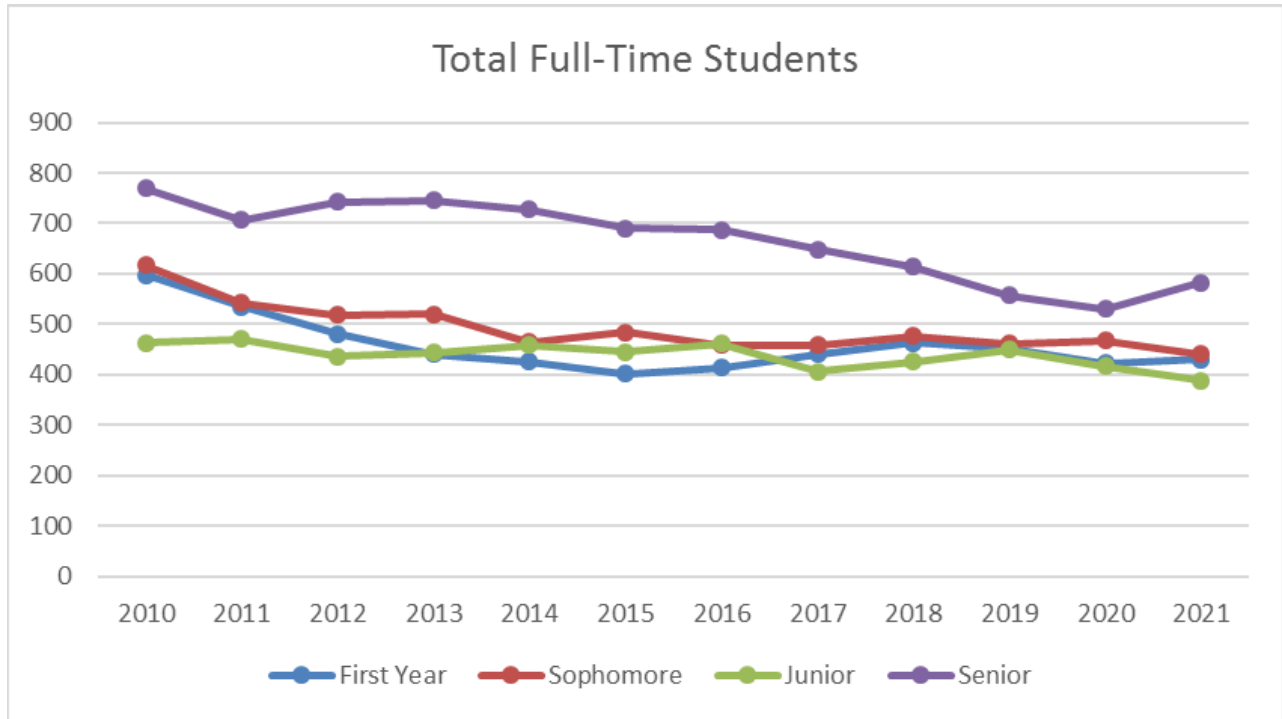


Graduate Students



Source: NDUHSRA- Headcounts and FTE Enrollments Pg. 5 Institution Totals- (4th Week Data)

MSU Full-time Undergraduates by Status

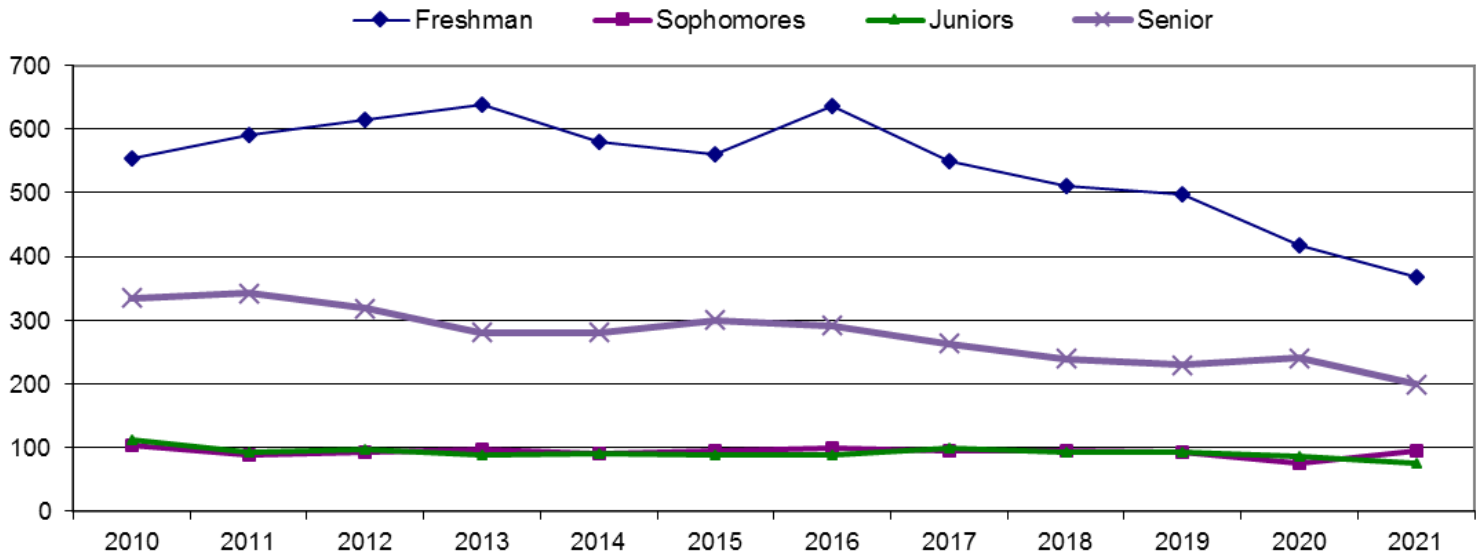


Source: NDUHSRA- Headcounts and FTE Enrollments Pg. 5 Institution Totals (4th Week Data). Undergraduate Special (UG Special) refers to an individual who has previously earned a bachelor’s degree and is taking additional undergraduate coursework. PeopleSoft includes these students in Senior Status.

Part-Time Undergraduates by Status

	2006	2007	2008	2009	2010	2011	2012	2013	2014	2015	2016	2017	2018	2019	2020	2021
Freshman	442	367	424	506	555	590	614	638	579	561	637	549	511	497	417	367
Sophomores	130	122	115	116	103	88	92	96	90	94	99	94	94	92	76	95
Juniors	135	126	119	131	112	92	96	88	91	88	88	98	92	92	87	75
Senior	286	298	276	292	335	342	318	281	281	300	291	263	239	230	240	199

Total Part Time Students



Source: NDUHSRA- Headcounts and FTE Enrollments Pg. 5 Institution Totals (4th Week Data) **Note:** Undergraduate Special (UG Special) refers to an individual who has previously earned a bachelor’s degree and is taking additional undergraduate coursework. ***Note:** PeopleSoft software initiated in 2005. Undergraduate Special category no longer exists. These individuals are now included as seniors. To compare data for the seniors in 2005, the 2004 number used is the Senior + UG Special. **Note:** Undergraduate Special numbers were added to senior status for this chart.

North Dakota Graduate and Undergraduate Students by North Dakota County

	2008	2009	2010	2011	2012	2013	2014	2015	2016	2017	2018	2019	2020	2021
No County	0	0	0	0	1	0	0	0	0	0	0	0	0	0
Adams	1	0	1	0	0	0	0	0	0	0	0	0	0	1
Barnes	1	3	2	3	5	4	5	2	0	2	1	5	7	5
Benson	16	6	7	6	3	7	9	6	7	6	5	3	6	7
Billings	1	1	1	1	1	1	0	0	0	0	0	0	0	0
Bottineau	61	62	67	57	59	48	47	46	43	37	34	21	21	28
Bowman	5	5	3	1	4	1	3	1	3	2	2	2	2	1
Burke	15	21	17	17	24	20	14	17	14	11	11	12	14	15
Burleigh	149	146	153	161	175	148	128	119	119	132	119	110	112	100
Cass	28	40	45	39	55	55	49	45	43	41	58	50	48	56
Cavalier	7	4	5	4	2	1	0	3	2	1	2	1	3	6
Dickey	1	3	4	3	2	4	3	2	1	2	1	2	1	1
Divide	10	6	7	7	5	6	1	5	4	6	7	8	8	8
Dunn	4	9	7	3	7	2	0	0	3	1	5	3	4	5
Eddy	2	2	2	0	1	2	1	1	1	0	0	0	0	0
Emmons	5	8	5	7	6	7	1	2	4	4	2	2	0	2
Foster	0	1	1	3	2	4	5	5	4	4	4	3	3	1
Golden Valley	1	1	0	0	0	1	1	0	0	3	1	1	1	1
Grand Forks	16	28	29	14	20	18	15	19	16	12	12	15	14	22
Grant	2	1	2	1	2	2	2	1	2	1	1	0	0	0
Griggs	0	0	1	0	0	1	2	2	0	1	2	1	0	0
Hettinger	5	4	3	1	4	2	2	3	1	0	1	2	2	2
Kidder	4	4	7	5	3	2	2	1	2	0	1	2	0	0
La Moure	5	1	5	4	2	2	2	1	0	1	2	1	1	2
Logan	0	1	0	0	1	3	4	0	1	0	0	0	1	1
McHenry	84	90	79	94	80	86	82	69	56	53	52	37	44	38
McIntosh	6	3	2	2	1	0	0	2	2	1	2	2	1	1
McKenzie	14	12	17	18	16	14	16	15	13	12	13	11	14	18

Continue to next page

McLean	51	47	34	28	27	35	35	31	33	28	25	23	26	23
Mercer	32	34	34	35	26	17	15	11	12	13	6	12	12	9
Morton	45	52	55	43	41	44	41	45	51	43	42	38	32	36
Mountrail	75	79	72	58	42	42	23	34	43	36	30	37	31	23
Nelson	1	2	1	0	1	1	3	1	0	2	1	1	0	2
Oliver	3	4	3	3	0	1	1	1	1	0	0	1	0	2
Pembina	1	2	2	2	5	4	3	2	2	1	0	0	0	4
Pierce	30	34	25	0	24	23	15	10	11	13	11	13	11	13
Ramsey	21	21	14	13	17	16	11	13	19	9	9	5	7	14
Ransom	2	2	2	3	3	1	0	1	1	0	0	0	2	0
Renville	39	41	45	31	36	26	26	23	36	37	36	31	28	30
Richland	2	2	1	3	1	4	4	5	3	2	1	1	4	5
Rolette	50	59	52	43	29	18	19	14	22	19	34	32	31	33
St Louis	0	1	0	0	0	0	0	0	0	0	0	0	0	0
Sargent	0	0	2	2	2	1	1	1	1	0	0	0	0	1
Sheridan	1	3	5	4	4	6	3	1	2	4	3	3	3	2
Sioux	0	5	7	2	0	1	2	1	2	2	1	0	1	2
Slope	0	0	1	0	0	1	0	1	0	0	0	0	0	0
Stark	32	23	22	17	19	0	21	16	13	13	17	18	20	16
Steele	1	1	1	1	0	23	0	0	0	0	1	1	1	1
Stutsman	10	11	9	15	9	9	12	14	8	10	8	8	9	8
Towner	8	4	7	5	6	5	2	2	4	2	4	4	0	2
Traill	4	3	5	6	6	6	7	4	2	1	2	2	0	0
Walsh	8	7	6	5	6	7	3	4	2	3	3	4	8	10
Ward	1871	1979	2110	1977	1872	1828	1754	1718	1789	1692	1680	1512	1410	1320
Wells	17	18	24	17	13	14	13	7	6	6	6	6	6	6
Williams	77	77	84	66	60	73	75	70	63	54	48	45	58	65
Total ND	2824	2973	3095	2830	2730	2647	2483	2397	2467	2323	2306	2091	2007	1948

Data Source: NDUH2SRG- (4th Week Data). NOTE: 2011 reported having 4UG with no county indicated and 1UG from Pima county, which does not exist in ND

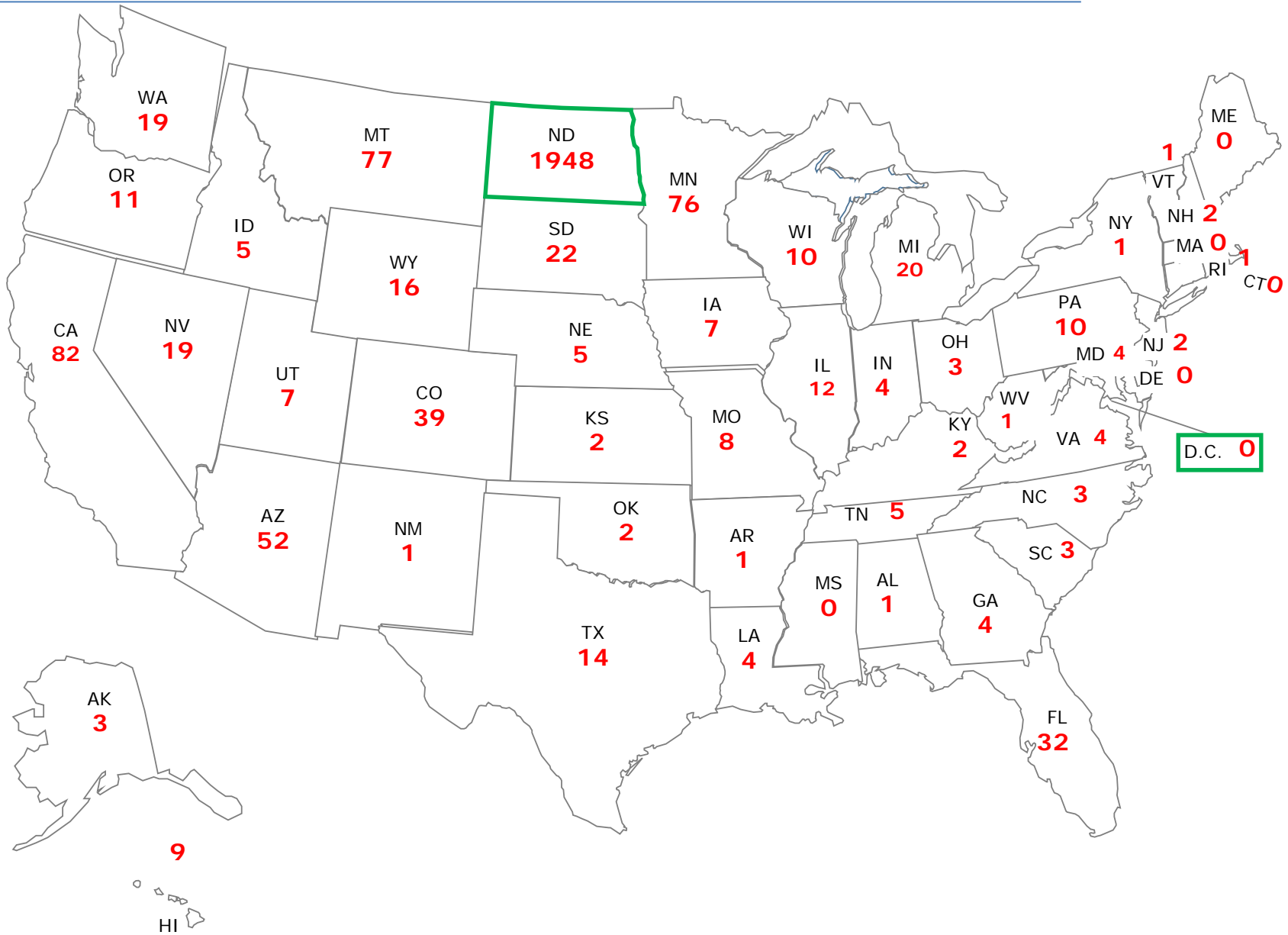
Enrolled by State of Origin 2005-2020

State	2005	2006	2007	2008	2009	2010	2011	2012	2013	2014	2015	2016	2017	2018	2019	2020	2021
AK	6	5	6	2	4	5	7	5	4	2	8	2	4	5	7	5	3
AL	1	1	2	2	1	1	2	1	2	1	2	2	3	2	1	2	1
AR	1	2	2	1	2	2	2	2	1	1	3	1	4	2	3	2	1
AZ	9	8	6	9	10	15	12	12	16	16	16	23	28	34	37	40	52
CA	30	35	30	30	26	55	53	75	89	99	107	108	122	109	99	100	82
CO	11	13	11	9	12	12	7	7	12	14	10	10	12	19	20	34	39
CT	1	0	0	0	3	2	0	2	3	2	1	1	2	0	1	0	0
D.C.	0	0	0	0	0	0	1	0	0	0	0	1	0	0	0	1	0
DE	0	1	1	2	1	1	0	3	4	2	2	1	0	0	0	0	0
FL	9	19	15	11	16	31	30	41	41	37	50	43	36	24	29	25	32
GA	3	3	3	5	6	4	5	6	4	9	3	5	8	6	9	9	4
HI	2	1	1	1	0	2	1	1	1	1	5	4	4	6	9	11	9
IA	4	2	7	3	6	4	6	4	4	6	11	1	4	6	9	12	7
ID	18	9	10	7	6	4	4	1	2	3	5	6	9	10	9	6	5
IL	8	8	6	5	8	16	14	12	20	15	24	18	21	16	16	18	12
IN	1	0	4	2	3	2	2	4	0	4	6	5	5	5	5	5	4
KS	1	3	2	0	5	4	2	3	2	3	5	3	4	3	6	5	2
KY	2	2	6	6	6	2	4	2	0	0	1	0	1	0	0	1	2
LA	1	2	2	4	7	9	4	2	1	3	0	2	2	2	3	4	0
MA	2	5	1	1	1	4	2	4	3	5	3	1	0	2	0	2	0
MD	3	7	2	3	1	4	2	4	3	6	11	8	9	8	6	9	4
ME	0	0	0	0	1	2	0	1	4	4	4	3	2	1	0	0	0
MI	4	3	1	1	7	12	11	10	13	9	13	9	12	10	10	23	20
MN	36	34	28	36	49	50	57	82	87	87	78	75	75	86	87	88	76
MO	6	4	6	3	1	7	6	4	7	6	4	4	6	7	9	6	8
MS	1	2	0	0	1	1	1	2	1	1	0	2	1	1	1	0	0
MT	103	127	111	97	89	99	107	93	92	86	67	42	59	70	88	88	77
NC	3	3	2	3	4	4	7	11	13	13	8	5	7	4	6	4	3
ND	3,140	2,987	2,803	2825	2980	2970	2859	2730	2647	2483	2397	2328	2323	2306	2231	2007	1948

Continued on next page

NE	3	2	0	3	1	6	4	2	5	5	9	7	3	2	8	8	5
NH	1	1	1	2	2	1	1	0	1	1	3	3	5	5	4	4	2
NJ	3	2	3	2	4	5	2	1	2	2	5	3	4	12	7	3	2
NM	3	2	1	0	2	3	1	1	1	3	2	4	3	6	3	4	1
NV	4	7	3	1	2	4	6	6	8	5	5	5	7	9	8	13	19
NY	8	7	2	3	1	3	4	13	11	9	6	6	5	1	4	5	1
OH	6	4	3	5	5	7	5	8	5	10	9	10	9	9	5	5	3
OK	0	1	0	4	4	8	2	0	3	3	1	2	2	2	2	1	2
OR	4	2	3	0	0	8	6	6	9	12	13	18	17	10	8	6	11
PA	2	5	1	4	2	6	5	8	7	6	8	5	7	3	8	7	10
RI	0	1	0	0	0	1	0	0	1	1	0	0	0	2	1	1	1
SC	1	2	0	1	0	1	4	2	3	7	4	1	3	4	3	3	3
SD	24	27	14	11	12	14	8	11	11	8	8	10	12	11	12	19	22
TN	0	0	1	0	1	4	4	3	3	4	4	3	2	2	2	1	5
TX	14	8	7	10	14	35	20	14	14	24	25	25	23	19	17	16	14
UT	3	2	4	2	5	6	2	6	4	14	9	6	7	9	1	2	7
VA	8	10	14	7	5	8	5	7	8	7	11	7	9	12	7	4	4
VT	0	0	0	1	0	0	0	0	0	0	0	0	0	0	0	1	1
WA	22	21	8	13	22	22	20	17	26	28	30	30	31	20	12	14	19
WI	5	5	4	2	1	12	8	6	8	13	13	10	15	14	13	15	10
WV	5	3	4	1	2	5	5	5	5	4	2	1	1	1	1	1	1
WY	8	9	5	3	5	10	1	5	6	6	6	4	12	11	15	19	16
P Rico	0	0	0	0	1	0	0	0	0	2	2	1	0	0	0	0	0
*AE	5	4	6	2	4	5	4	2	0	3	4	1	1	6	0	1	5
Virgin Islands	0	0	0	0	0	0	0	0	0	0	0	0	0	0	0	0	1
US Enrolled Total	3535	3411	3152	3145	3351	3498	3325	3247	3217	3095	3023	2875	2941	2914	2842	2660	2556

Source: NDUH 2SRG-Official Enrollment Report (4th Week Data)



New Students, Transfers, and Older than Average Students (OTAS)

	2003	2004	2005	2006	2007	2008	2009	2010	2011	2012	2013	2014	2015	2016	2017	2018	2019	2020	2021	% Change
Total New Freshman	543	549	471	483	445	437	438	483	473	398	397	341	347	357	373	397	399	396	374	-5.56%
Male	211	215	206	205	197	158	189	171	211	164	154	121	157	154	155	176	175	167	164	-1.80%
Female	332	334	265	278	248	279	249	312	262	234	243	220	190	203	218	221	224	229	210	-8.30%
Source: NDU02SRK- Enrollment; Campus Totals (p.37)- 1st Time Freshman-4th Week Data (includes FT & PT)																				
Total Transfers	449	456	382	279	278	270	328	341	251	295	320	316	280	351	338	301	305	306	237	-22.55%
Male	203	188	138	100	85	91	114	129	83	98	115	127	116	126	129	100	110	84	69	-17.86%
Female	246	268	244	179	193	179	214	212	168	197	205	189	164	225	209	201	195	222	168	-24.32%
Source: Enrollment Report NDU02SRD- Transfer Student-4th Week Data																				
Total OTAS	1126	1152	1142	1089	1106	1138	1034	1029	909	866	833	767	793	730	739	729	685	621	594	-4.35%
Male	400	418	412	406	396	412	401	391	374	345	349	342	334	306	328	309	291	236	185	-21.61%
Female	726	734	730	683	710	726	633	638	535	521	484	425	459	424	411	420	394	385	409	6.23%
Source: Enrollment Report- NDUH2SRN - Enrollment Summary by Age (UGRD ONLY)																				
New Grad Students				79	88	65	91	91	78	80	93	75	84	93	94	86	94	87	74	-14.94%
Male				16	20	18	21	23	20	23	40	28	40	34	36	29	30	24	28	16.67%
Female				63	68	47	70	68	58	57	53	47	44	59	58	57	64	63	46	-26.98%
Source: Enrollment Report-NDU02SRD-New Grad																				

Source: Report NDU02SRD- Student Data Statistics- Enrollment- and NDUH2SRN Enrollment Summary by Age and NDU02SRK- Enrollment 1st Time Graduate-4th Week Official Enrollment Reports provided by the Registrar's Office- September 23rd,2011.Older Than Average Student (OTAS): undergraduate 25 years and older.

**Note: Data in Fact Books 2001-2004 previously included only the data for full-time OTA undergraduate students. The numbers in this chart now include both full and part-time students for all years presented. Breakdowns of full and part-time students are presented graphically, by year, on the next page.

New First-year Student Applications and Enrollment Patterns

	2011	2012	2013	2014	2015	2016	2017	2018	2019	2020	2021
Applied	659	540	597	508	571	617	569	632	694	627	547
Enrolled	460	396	397	341	347	357	373	397	399	396	374
Denied	3	4	43	46	65	75	60	114	101	43	19
% Enrolled	69.80%	73.33%	66.50%	67.13%	60.77%	57.86%	65.55%	62.82%	57.49%	63.16%	68.37%

Data Source: Admission Summary Data Report. Only includes completed applications.

Retention of First-year Students

Term	Full-time	Term	Still Enrolled	Retention
	First Time Freshmen			Percentage
Fall 01	506	Fall 02	321	63.0%
Fall 02	551	Fall 03	321	58.0%
Fall 04	393	Fall 05	274	70.0%
Fall 05	445	Fall 06	279	62.7%
Fall 06	461	Fall 07	292	60.0%
Fall 07	418	Fall 08	291	69.0%
Fall 08	406	Fall 09	284	70.0%
Fall 09	419	Fall 10	296	71.0%
Fall 10	461	Fall 11	291	62.0%
Fall 11	435	Fall 12	287	65.3%
Fall 12	353	Fall 13	240	68.0%
Fall 13	349	Fall 14	234	67.0%
Fall 14	316	Fall 15	237	75.0%
Fall 15	314	Fall 16	217	70.0%
Fall 16	312	Fall 17	215	69.0%
Fall 17	335	Fall 18	235	70.0%
Fall 18	384	Fall 19	275	72.0%
Fall 19	390	Fall 20	273	71.0%
Fall 20	375	Fall 21	274	73.0%

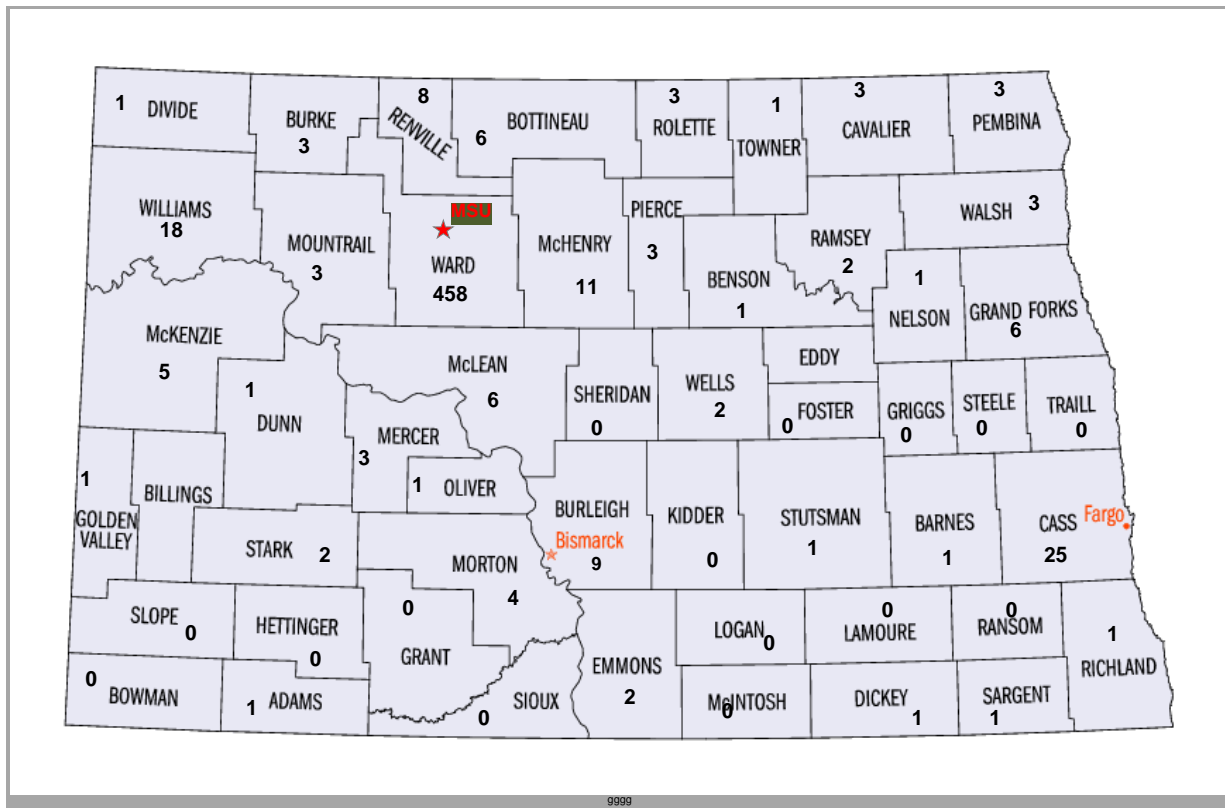
New Calculation: New freshmen enrolled (12 semester hours or more) and returned for any number of credits in Fall 2004.

Freshman by North Dakota County*

	2010	2011	2012	2013	2014	2015	2016	2017	2018	2019	2020	2021
No County	0	0	1	0	0	0	0	0	0	0	0	0
Adams	0	0	0	0	0	0	0	0	0	0	0	1
Barnes	0	1	2	0	1	0	0	1	0	2	1	1
Benson	1	0	0	4	2	0	3	2	0	2	1	1
Billings	0	0	0	0	0	0	0	0	0	0	0	0
Bottineau	17	13	11	14	5	6	5	6	9	4	5	6
Bowman	0	0	3	0	1	0	2	0	0	0	0	0
Burke	2	8	10	5	3	6	6	2	4	6	4	3
Burleigh	22	18	16	17	12	9	13	18	13	12	12	9
Cass	6	8	14	18	17	26	19	18	26	29	29	25
Cavalier	2	1	1	1	0	1	1	0	1	0	2	3
Dickey	2	0	0	1	2	1	0	2	1	2	1	1
Divide	1	3	1	1	0	1	2	3	1	1	0	1
Dunn	1	0	2	0	0	0	1	0	2	0	0	1
Eddy	1	0	1	1	0	0	0	0	0	0	0	0
Emmons	0	1	2	3	0	1	1	1	0	0	0	2
Foster	0	1	0	1	1	1	0	1	0	1	1	0
Golden Valley	0	0	0	1	0	0	0	3	0	0	0	1
Grand Forks	6	4	5	5	2	5	2	1	4	5	5	6
Grant	1	0	1	0	0	0	1	0	0	0	0	0
Griggs	1	0	0	0	0	0	0	0	0	0	0	0
Hettinger	1	0	4	1	0	1	0	0	1	0	0	0
Kidder	5	0	0	0	1	1	1	0	0	0	0	0
LaMoure	0	1	0	0	0	0	0	0	0	1	1	0
Logan	0	0	0	1	1	0	1	0	0	0	1	0
McHenry	30	41	33	24	16	12	13	15	17	11	8	11
McIntosh	0	0	0	0	0	1	1	1	1	0	0	0
McKenzie	2	7	2	1	2	3	4	3	0	0	2	5
McLean	13	6	6	9	9	8	5	5	4	6	5	6
Mercer	7	9	2	2	1	1	2	4	1	6	2	3
Morton	7	7	6	7	8	7	4	7	5	5	2	4
Mountrail	10	15	9	16	2	12	12	9	4	15	5	3
Nelson	1	0	0	1	0	0	0	0	0	0	0	1
Oliver	0	0	0	0	0	0	0	0	0	0	0	1
Pembina	0	0	2	1	3	2	1	0	0	0	0	3
Pierce	6	7	2	5	1	1	2	5	2	9	3	3

Continued on next page

Ramsey	4	0	3	5	1	2	6	1	1	2	0	2
Ransom	0	0	1	0	0	0	0	0	0	0	0	0
Renville	16	10	16	7	13	8	17	13	10	11	9	8
Richland	0	1	0	2	2	2	0	0	0	0	2	1
Rolette	8	7	3	3	3	2	4	1	5	9	2	3
Sargent	1	0	1	0	0	0	0	0	0	0	0	1
Sheridan	2	1	0	1	0	0	0	1	0	0	1	0
Sioux	3	0	0	0	1	1	0	0	0	0	0	0
Slope	0	0	0	0	0	0	0	0	0	0	0	0
Stark	4	1	2	2	8	4	5	7	4	6	3	2
Steele	0	0	0	0	0	0	0	0	1	1	1	0
Stutsman	1	4	2	4	1	1	2	3	3	2	4	1
Towner	1	1	2	3	0	0	2	0	0	0	0	1
Traill	2	0	0	0	1	0	0	0	1	1	0	0
Walsh	0	0	2	1	0	2	1	1	1	2	2	3
Ward	753	736	691	698	669	614	678	645	638	574	489	458
Wells	8	4	3	1	1	0	1	3	4	3	2	2
Williams	11	11	10	18	8	5	7	3	4	5	7	18
Total ND	959	927	872	885	798	747	825	785	768	733	612	601



Data Source: NDUH2SRG- Official Enrollment Report (4th Week Data)* Freshman students are defined as any first-time students and any other student who has not yet obtained sufficient credits to advance to sophomore standing.

*Minot State University
Student Enrollment Highlights: FTE/Total**

Academic Level	2017 Fall Semester			2018 Fall Semester			2019 Fall Semester			2020 Fall Semester			2021 Fall Semester		
	2017 Fall Semester FT + FTE of PT	Total Scheduled Credit Hours	FTE of Total Credit Hours	2018 Fall Semester FT + FTE of PT	Total Scheduled Credit Hours	FTE of Total Credit Hours	2019 Fall Semester FT + FTE of PT	Total Scheduled Credit Hours	FTE of Total Credit Hours	2020 Fall Semester FT + FTE of PT	Total Scheduled Credit Hours	FTE of Total Credit Hours	2021 Fall Semester FT + FTE of PT	Total Scheduled Credit Hours	FTE of Total Credit Hours
Freshmen	625.90	9165.50	611.03	623.79	9154.00	610.26	610.54	8938.00	595.86	563.17	8183.50	545.57	556.10	8144.00	542.94
Sophomore	500.91	7368.00	491.20	517.41	7696.50	513.10	503.80	7492.50	499.50	504.20	7429.50	495.30	482.54	7027.00	468.47
Junior	447.64	6667.00	444.46	465.63	6880.50	458.70	492.60	7248.00	483.19	453.40	6686.50	445.77	421.31	6235.00	415.66
Senior	763.72	11181.00	745.40	719.16	10639.50	709.30	655.24	9509.00	633.93	634.80	9103.00	606.86	667.27	9626.00	641.72
Total Undergrad.	2338.17	34381.50	2292.09	2325.99	34370.50	2291.36	2262.18	33187.50	2212.48	2155.57	31402.50	2093.50	2127.22	31032.00	2068.79
Graduate	168.58	2103.50	175.29	182.99	2298.00	191.50	180.66	2242.00	186.83	175.58	2155.00	179.58	173.59	2073.00	172.76
Institutional Total FTE	2506.75	36485.00	2467.38	2508.98	36668.50	2482.00	2442.84	3549.50	2399.31	2331.15	33557.50	2273.08	2300.81	33105.00	2241.55

The calculations are based upon 15 credit hours for full-time undergraduate students and 12 credit hours for graduate students.

Source: Report NDUH2SRA- Headcounts and FTE Enrollments- Official Enrollment Report (4th Week Data)

Student Totals by Ethnicity
(Graduate and undergraduate combined)

	2006	2007	2008	2009	2010	2011	2012	2013	2014	2015	2016	2017	2018	2019	2020	2021	Fall 2019 % Chg
Caucasian	2974	2737	2511	2814	2937	2717	2613	2420	2360	2258	2265	2235	2170	2138	1995	1925	-3.51%
Male	1077	973	974	1032	1067	1020	965	874	867	789	786	829	777	776	680	619	-8.97%
Female	1895	1764	1537	1782	1870	1697	1648	1546	1493	1469	1479	1406	1393	1362	1315	1306	-0.68%
African American	93	90	106	109	141	128	133	158	167	175	195	184	178	133	111	93	-16.22%
Male	58	50	63	53	85	82	90	102	113	119	133	112	103	65	60	49	-18.33%
Female	35	40	43	56	56	46	43	56	54	56	62	71	75	68	51	44	-13.73%
American Indian	142	127	129	147	142	98	70	64	52	45	58	49	63	57	57	51	-10.53%
Male	36	34	37	50	46	34	23	22	21	17	22	17	19	16	12	11	-8.33%
Female	106	93	92	97	96	64	47	42	31	28	36	32	44	41	45	40	-11.11%
Asian/Pacific Islander	40	35	30	41	44	41	43	43	59	76	80	68	64	51	55	48	-12.73%
Male	15	12	11	16	18	18	17	20	27	35	39	30	31	31	28	24	-14.29%
Female	25	23	19	25	26	23	26	23	32	41	41	29	33	20	27	24	-11.11%
Hispanic	91	76	83	89	86	107	115	135	167	197	236	221	219	228	221	229	3.62%
Male	41	26	36	40	36	40	41	54	76	80	116	92	94	95	100	99	-1.00%
Female	50	50	47	49	50	67	74	81	91	117	120	129	125	133	121	130	7.44%
Non Resident Alien	299	290	275	337	389	415	392	402	411	404	377	278	313	338	307	313	1.95%
Male	101	86	93	106	106	155	152	149	160	180	173	122	136	145	122	118	-3.28%
Female	198	204	182	231	249	260	240	253	251	224	204	156	177	193	185	195	5.41%
Two or More Races	-	-	-	-	17	55	76	92	100	126	139	127	132	144	149	158	6.04%
Male	-	-	-	-	9	20	20	33	33	45	53	47	59	61	72	76	5.56%
Female	-	-	-	-	8	35	56	59	67	81	86	80	73	83	77	82	6.49%
Not Reported	75	69	38	103	110	96	118	203	94	67	62	54	50	32	25	19	-24.00%
									3410	3348	3412	3216	3189	3121	2920	2836	-2.88%

Resource: NDU02SRK Compliance Report-Enrollment by Ethnicity Pg 40 Campus Totals (4th Week Data). Percentage change: <http://www.csghnetwork.com/percentchangepcalc.html>



New Transfer Applications

New Transfer	2006	2007	2008	2009	2010	2011	2012	2013	2014	2015	2016	2017	2018	2019	2020	2021*
Applied	527	546	434	548	608	558	602	791	806	783	660	517	628	532	435	334
Enrolled	443	355	279	324	336	275	291	462	316	312	347	338	301	305	306	237
% Enrolled	84.1%	65.0%	64.3%	59.2%	55.3%	49.0%	48.4%	58.4%	39.2%	39.8%	52.6%	65.4%	59.0%	57.0%	70.30%	71.00%

Starting in 2017 incomplete applications were no longer counted.

Retention of First-year Students

Term	Full-time	Term	Still Enrolled	Retention
	First Time Freshmen			Percentage
Fall 01	506	Fall 02	321	63.0%
Fall 02	551	Fall 03	321	58.0%
Fall 04	393	Fall 05	274	70.0%
Fall 05	445	Fall 06	279	62.7%
Fall 06	461	Fall 07	292	60.0%
Fall 07	418	Fall 08	291	69.0%
Fall 08	406	Fall 09	284	70.0%
Fall 09	419	Fall 10	296	71.0%
Fall 10	461	Fall 11	291	62.0%
Fall 11	435	Fall 12	287	65.3%
Fall 12	353	Fall 13	240	68.0%
Fall 13	349	Fall 14	234	67.0%
Fall 14	316	Fall 15	237	75.0%
Fall 15	314	Fall 16	217	70.0%
Fall 16	312	Fall 17	215	69.0%
Fall 17	335	Fall 18	235	70.0%
Fall 18	384	Fall 19	275	72.0%
Fall 19	390	Fall 20	273	71.0%

Source: People+Soft NDU02SRK – NDU02SRL and IPEDS Spring Report Part E. Previous years indicated duplicated numbers and withdrawal students for 4th week.

"New Calculation: 1998 – 2002 Calculation for Retention: All new freshmen who return the following year. *2004 Calculation for Retention: New freshmen enrolled Fall 2003 (12 semester hours or more) and returned for any number of credits in Fall 2004."

6 Year Graduation Rates of First-Year Students

Fall Term	6 Year Graduation Rate
2002	33%
2003	34%
2004	32%
2005	29%
2006	27%
2007	31%
2008	30%
2009	31%
2010	39%
2011	34%
2012	34%
2013	37%
2014	40%
2015	42%
2016	43%
2017	37%
2018	46%
2019	45%
2020	55%

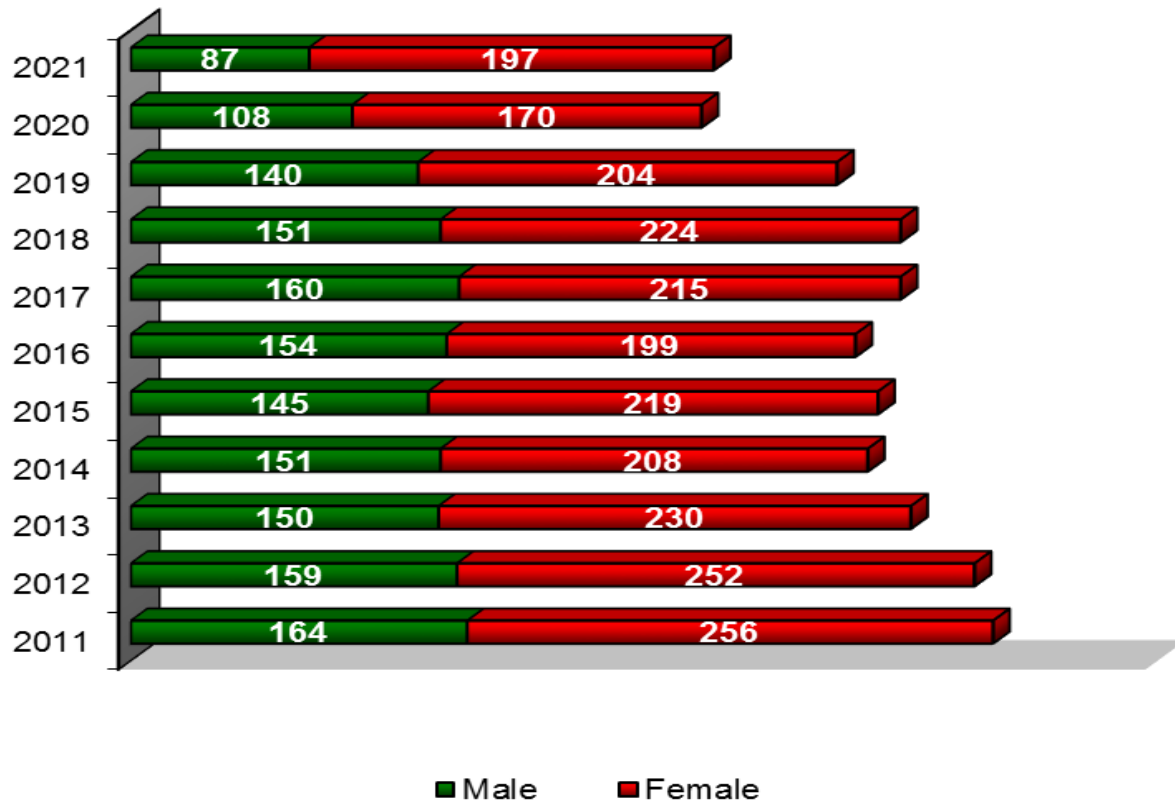
6 year graduation rates derived from First Year Fall term students who graduate in 6 years or less from Minot State University

Continuation and Graduation Rates by Freshmen Cohort										
Fall	# in Cohort	Avg ACT	Retention Rates		Cumulative Graduation/Retention Rates					
			*Retained 2nd Year	Retained 3rd Year	4 YEARS		5 YEARS		6 YEARS	
					Retained 4th Year	Graduated 4th Year	Retained 5th Year	Graduated 5th Year	Retained 6th Year	Graduated Within 6 Years
2006	461	20.9	69%	48%	42%	13%	32%	15%	14%	33%
2007	418	21.6	69%	53%	48%	14%	30%	18%	13%	37%
2008	406	21.8	70%	56%	48%	13%	31%	20%	14%	40%
2009	419	21.3	71%	55%	49%	16%	34%	18%	15%	43%
2010	461	21.8	63%	51%	48%	18%	33%	18%	15%	43%
2011	435	21.9	66%	53%	47%	17%	30%	16%	9%	37%
2012	353	22.6	68%	56%	52%	24%	11%	17%	7%	46%
2013	349	21.8	67%	60%	52%	23%	14%	17%	4%	45%
2014	316	22.5	75%	69%	56%	35%	9%	14%	2%	55%
2015	314	22.0	70%	57%	53%	25%	21%	17%	Fall 2021	Summer 2021
2016	312	21.0	69%	58%	58%	25%	Fall 2021	Summer 2021	Fall 2022	Summer 2022
2017	335	22.0	70%	64%	52%	Summer 2021	Fall 2022	Summer 2022	Fall 2023	Summer 2023
2018	384	21.0	72%	65%	Fall 2021	Summer 2022	Fall 2023	Summer 2023	Fall 2024	Summer 2024
2019	390	21.2	71%	Fall 2021	Fall 2022	Summer 2023	Fall 2024	Summer 2024	Fall 2025	Summer 2025
2020	374	21.0	Fall 2021	Fall 2022	Fall 2023	Summer 2024	Fall 2025	Summer 2025	Fall 2026	Summer 2026

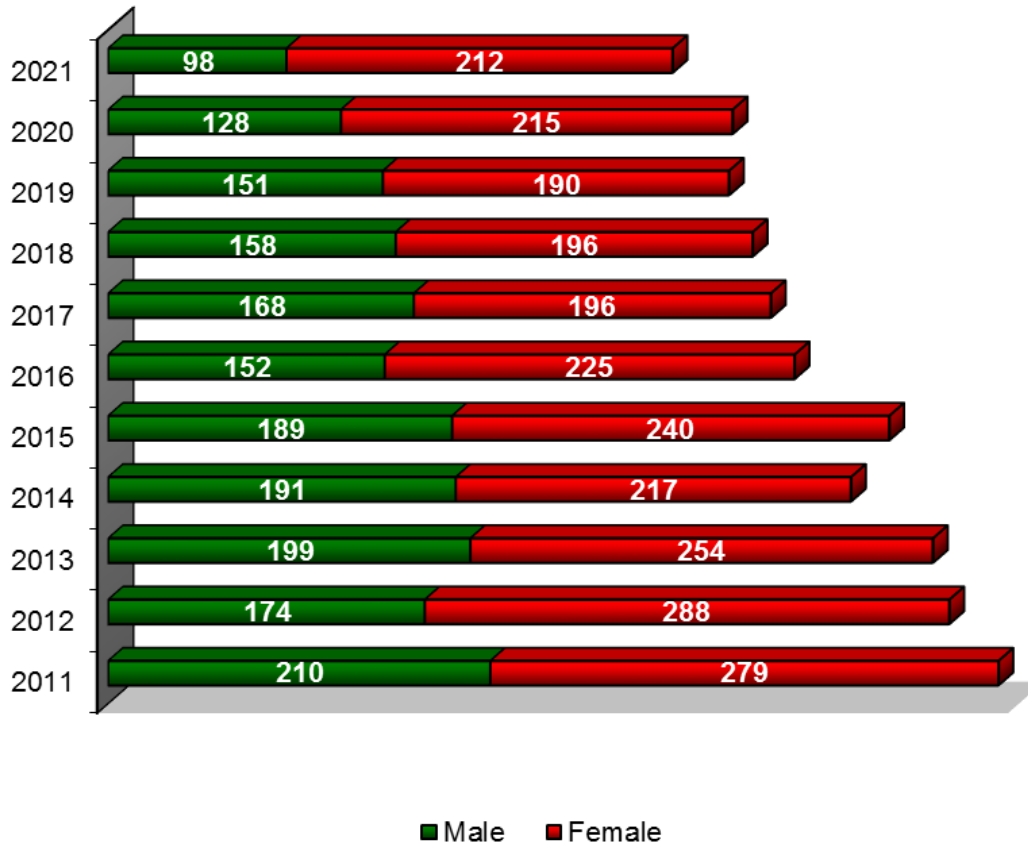
* Institutional retention rate as reported in MSU Factbook- Retention Rates are based on Fall 4th Week Enrollment

Older Than Average Student (OTAS) Enrollment:

Full-Time Undergraduate OTAS

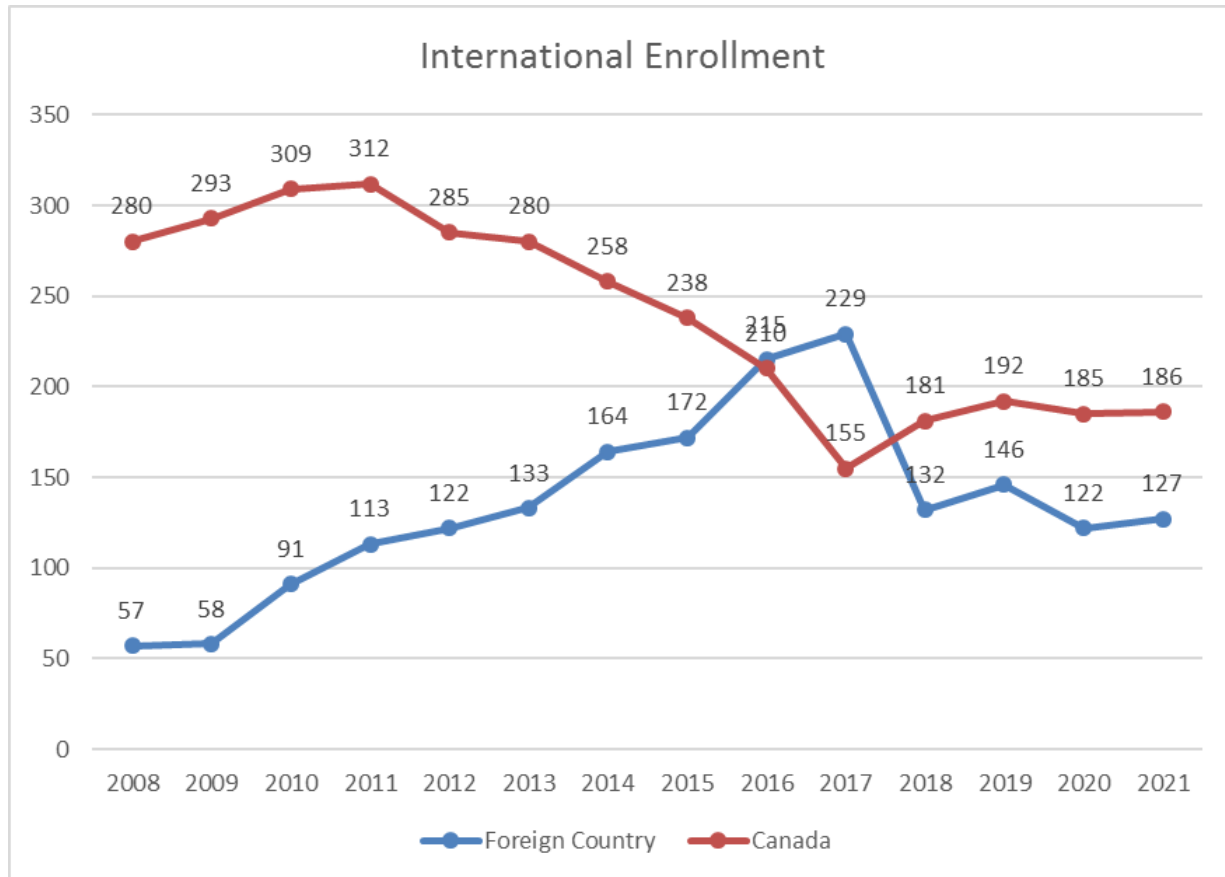


Part-Time Undergraduate OTAS



(OTA = student age 25 or greater). Source: NDUH2SRN Enrollment Summary by Age- (4th Week Data)

International Student Fall Enrollment



Source: Enrollment Report-NDUH2SRD (4th Week Data) - Based on Residency

Center for Extended Learning Details by Program

Duplicated Enrollments												
	2010	2011	2012	2013	2014	2015	2016	2017	2018	2019	2020	2021
MAFB	355	225	270	282	318	301	321	245	223	179	122	52
	2010	2011	2012	2013	2014	2015	2016	2017	2018	2019	2020	2021
Online Asynchronous	2392	2357	2165	2279	2038	2035	2180	2069	2101	2352	2954	2956
Online Synchronous			49	65	65	64	15	0	2	45	901	567
	2010	2011	2012	2013	2014	2015	2016	2017	2018	2019	2020	2021
IVN	75	46	72	65	51	24	81	85	89	74	65	54
Dual Credit (Early Entry) Enrollment	186	227	233	244	199	164	241	181	196	252	201	218
Bismarck	260	225	267	260	156	156	124	83	92	145	125	87
Independent Study (formerly Correspor	37	17	18	20	23	22	34	29	25	28	39	48
Fargo			106	136	131	144	144	145	177	186	98	97

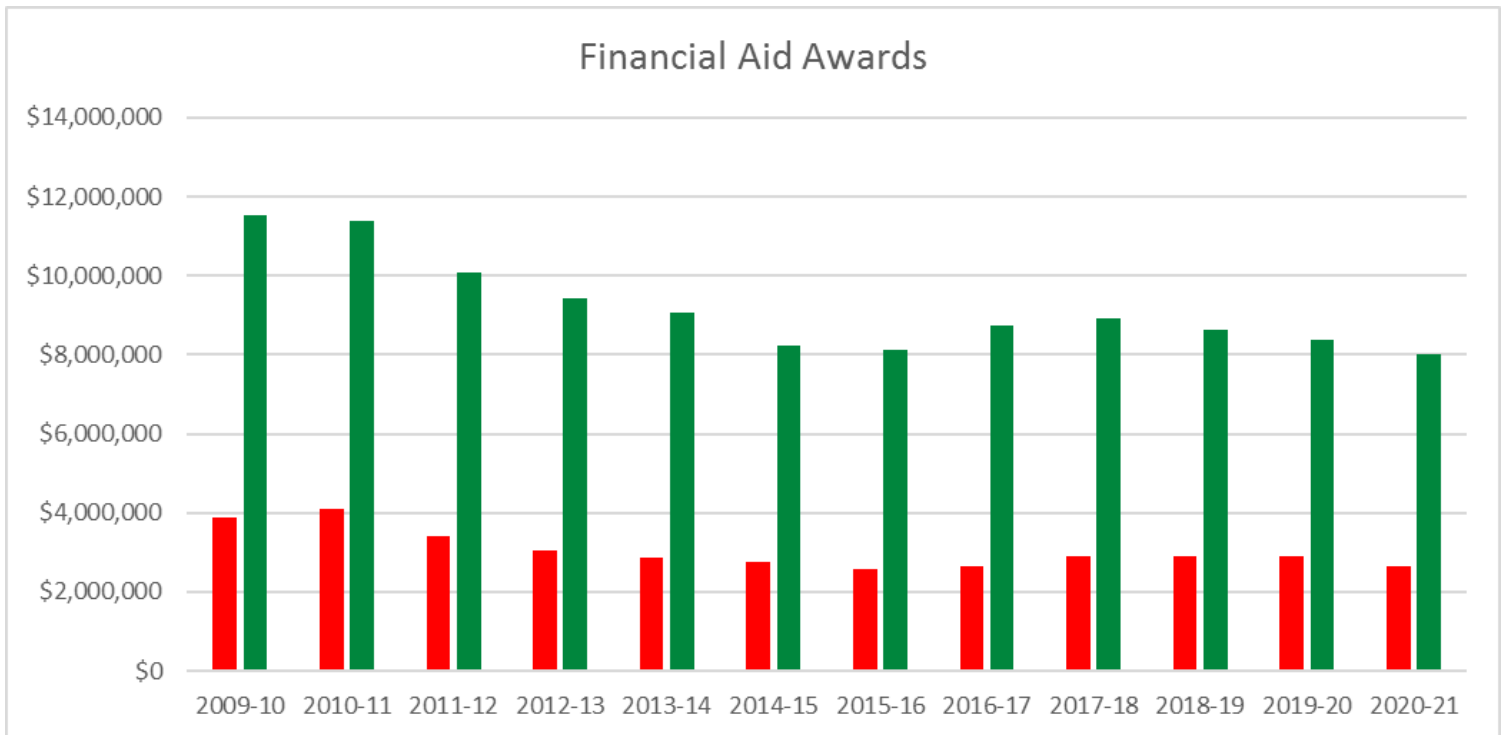
Type of Aid and Dollar Amount by Year

Academic Year	Work Study	Perkins	SEOG	Pell Grant	Stafford Loan/Direct	Total
2003-04	\$280,767	\$620,393	\$160,088	\$3,373,066	\$9,837,158	\$14,271,472
2004-05	\$211,054	\$609,178	\$119,375	\$3,179,660	\$9,197,139	\$13,316,406
2005-06	\$204,128	\$390,183	\$158,731	\$2,778,715	\$11,300,779	\$14,832,536
2006-07	\$169,616	\$308,403	\$113,024	\$2,614,624	\$10,613,747	\$13,819,414
2007-08	\$147,415	\$441,995	\$110,400	\$2,709,891	\$11,054,729	\$14,464,420
2008-09	\$123,373	\$457,753	\$122,255	\$2,744,696	\$11,369,905	\$14,817,982
2009-10	\$161,269	\$486,816	\$119,050	\$3,886,671	\$11,537,403	\$16,191,209
2010-11	\$154,262	\$314,304	\$91,261	\$4,085,030	\$11,370,864	\$16,015,721
2011-12	\$122,190	\$394,025	\$124,566	\$3,393,829	\$10,083,494	\$14,118,104
2012-13	\$93,492	\$340,169	\$139,114	\$3,035,256	\$9,411,803	\$13,019,834
2013-14	\$167,849	\$331,786	\$119,786	\$2,877,951	\$9,051,486	\$12,548,858
2014-15	\$142,597	\$444,015	\$122,230	\$2,763,019	\$8,238,523	\$11,710,384
2015-16	\$145,503	\$451,618	\$127,616	\$2,572,038	\$8,135,560	\$11,432,335
2016-17	\$117,956	\$395,601	\$141,660	\$2,629,443	\$8,732,672	\$12,019,322
2017-18	\$138,926	\$279,300	\$140,100	\$2,906,900	\$8,916,226	\$12,318,452
2018-19	\$126,892	\$0	\$141,620	\$2,891,795	\$8,632,396	\$11,792,703
2019-20	\$126,875	\$0	\$135,344	\$2,901,533	\$8,377,717	\$11,541,469
2020-21	\$83,131	\$0	\$161,466	\$2,656,973	\$8,017,415	\$10,918,985

Data Source: Office of Financial Aid and previously released MSU Factbook.

Continued

Financial Aid Trends



Grants and Contracts

Fiscal Year	Private	State	Federal	Federal Stimulus	Total
2003-04	(\$420,778)	\$437,636	\$7,828,760		\$7,845,618
2004-05	\$218,771	\$584,798	\$8,437,742		\$9,241,311
2005-06	\$29,767	\$726,121	\$7,275,993		\$8,031,881
2006-07	\$93,231	\$1,243,051	\$8,542,804		\$9,879,086
2007-08	\$75,468	\$929,208	\$8,007,051		\$9,011,727
2008-09	\$54,980	\$851,984	\$5,522,708		\$6,429,672
2009-10	\$53,271	\$1,612,607	\$6,924,802		\$8,590,680
2010-11	\$66,715	\$997,826	\$7,107,570		\$8,172,111
2011-12	\$501,149	\$1,377,650	\$6,848,676		\$8,727,475
2012-13	\$333,594	\$13,852,889	\$5,671,745		\$7,388,228
2013-14	\$320,129	\$1,502,916	\$5,326,629		\$7,149,674
2014-15	\$294,588	\$1,415,213	\$4,790,157		\$6,499,958
2015-16	\$381,477	\$1,477,826	\$4,374,818		\$6,234,121
2016-17	\$444,286	\$1,620,330	\$4,153,463		\$6,218,079
2017-18	\$334,433	\$1,588,229	\$4,020,418		\$5,943,080
2018-19	\$375,022	\$1,937,550	\$3,589,861		\$5,902,433
2019-20	\$308,613	\$2,404,481	\$3,082,829	\$963,495	\$5,795,923
2020-21	\$299,698	\$2,159,506	\$3,018,519	\$4,362,986	\$9,840,709

Data Source: Assistant Vice President, Business Services Controller

Circulation of Library Materials

	2008-09	2009-10	2010-11	2011-12	2012-13	2013-14	2014-15	2015-16	2016-17	2017-18	2018-19	2019-20	2020-21
Number	20,246*	19,489	17,380	15,881	13,030	12,774	12,088	11,031	9,546	8,954	6,561	46,467	53,484
% Chg	7.0	-3.7	-10.8	-8.6	-17.9	-2.0	-5.3	-8.7	-13.4	-6.2	-26.7	608.23%	15.10%

Circulation of Material by User Class

User	2008-09	2009-10	2010-11	2011-12	2012-13	2013-14	2014-15	2015-16	2016-17	2017-18	2018-19	2019-20	2020-21
Students	12,641	12,714	10,506	10,389	7,779	8,084	7,899	6,702	5,487	5,009	4,798	29,374	36,970
Faculty	5,024	5,007	4,564	3,675	3,716	3,366	2,764	3,189	2,989	3,192	1,277	16,497	15,980
Local Patron	759*	969	896	476	369	204	456	411	249	102	192	38	106
Interlibrary Loan	790*	799	1,414	1,341	1116	1120	969	729	821	651	294	558	428

Data Source: MSU Library Director

Note: 2020 article downloads were added (from our article databases) to the circulation figures.
An article download is the equivalent of checking out a print article, including these transactions as part of an accurate circulation figure.

Library Holdings

Item	2008	2009	2010	2011	2012	2013	2014	2015	2016	2017	2018	2019	2020	2021
Books	188,158	190,215	191,384	193,354	194,717	195,791	194,235	194,731	185,220	183,652	180,151	180,600	181,542	180,268
Periodicals	42,126	42,402	43,092	39,593	39,768	39,913	40,851	43,139	44,817	31,264	52,482	52,910	53,366	53,009
Documents	181,113	182,744	180,200	185,765	197,286	207,424	215,752	224,672	224,653	224,641	225,895	226,475	226,392	226,570
Microfilm	11,657	11,642	11,642	11,642	11,642	11,642	11,642	11,642	11,642	11,642	10,385	10,402	10,415	10,420
Microfiche	711,859	625,820	632,314	638,896	644,663	644,663	644,663	644,663	644,663	644,663	644,663	644,663	644,633	644,633
Subscriptions*	532	520	530	520	520	520	500	500	500	130	2,751	2,748	2,791	2,785
Maps	124,519	124,626	124,800	125,000	n/a	n/a	125,272	125,485	125,489	125,415	125,485	25,000	25,000	25,000
Non-Print Materials	16,335	16,997***	17,375	17,514	17,811	17,950					9,425	9,883	8,273	8,273
Disc Recordings	4172													
Cassettes	3949													
Videotapes	3267													
Software	116													
Compact Disks	2429													
DVD**	641													

Data Source: ~MSU Library *Current journals, serial and newspaper subscriptions

***Non-print materials include disc recordings, cassettes, videotapes, software, compact disks, DVD, curriculum materials and miscellaneous items

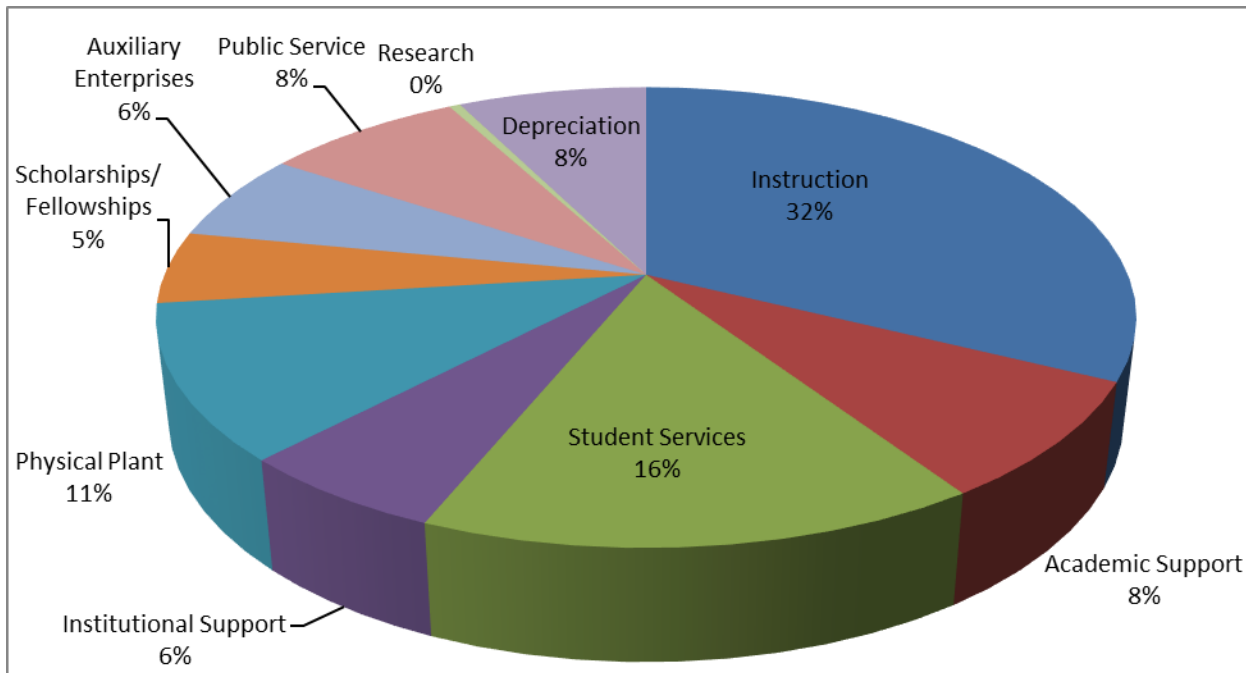
Library-use Figures

Year	2008-09	2009-10	2010-11	2011-12	2012-13	2013-14	2014-15	2015-16	2016-17	2017-18	2018-19	2019-20	2020-21
Materials Provided by Other Institutions	4,193	3,209	4,966	3,396	3,111	2,939	3,700	3,482	3,541	2,613	2,711	1,889	1,565
Materials Requested by Other Institutions	4,450	2,614	2,282	2,858	1,917	2,239	1,963	1,701	1,854	1,919	2,328	1,686	1,282

Data Source: MSU Library * Correction by library from data reported in 2005

Operating Expenses by Function

Function	13-14	14-15	15-16	16-17	17-18	18-19	19-20	20-21	20-21 % Change
Instruction	\$20,172,248.00	\$21,256,392.00	\$21,292,557.41	\$19,741,863.52	\$19,304,730.87	\$18,646,335.37	\$18,681,258.57	\$19,007,726.39	2%
Academic Support	\$3,362,580.00	\$3,842,840.00	\$4,159,387.49	\$3,944,675.58	\$2,955,148.62	\$3,000,092.54	\$2,991,589.52	\$4,889,825.05	63%
Student Services	\$7,838,725.00	\$8,056,896.00	\$8,254,019.58	\$8,360,441.55	\$8,605,672.33	\$9,081,615.71	\$9,052,669.30	\$9,176,991.39	1%
Institutional Support	\$4,150,587.00	\$1,975,826.00	\$2,093,238.72	\$2,363,871.50	\$2,552,033.99	\$2,245,048.16	\$2,535,439.41	\$3,488,051.01	38%
Physical Plant	\$5,625,391.00	\$6,451,705.00	\$6,271,063.57	\$5,955,624.67	\$6,083,486.47	\$10,332,103.37	\$6,129,817.87	\$6,392,195.66	38%
Scholarships/Fellowships	\$2,090,854.00	\$771,737.00	\$818,291.32	\$1,801,503.64	\$1,912,134.69	\$1,991,924.63	\$2,920,285.80	\$2,983,199.36	2%
Auxiliary Enterprises	\$4,472,399.00	\$4,370,563.00	\$4,440,813.39	\$4,232,510.18	\$3,937,219.61	\$3,909,538.33	\$3,701,326.42	\$3,647,041.66	-1%
Public Service	\$5,173,153.00	\$5,032,294.00	\$5,171,566.28	\$5,069,841.32	\$4,926,611.95	\$5,240,035.45	\$4,892,013.66	\$4,608,267.97	-6%
Research	\$210,373.00	\$344,096.00	\$413,620.00	\$424,031.27	\$419,669.46	\$298,668.32	\$253,283.31	\$257,980.66	2%
Depreciation	\$3,249,885.00	\$3,759,665.00	\$4,328,504.00	\$4,358,202.00	\$4,385,261.00	\$4,374,718.00	\$4,340,815.00	\$4,382,635.00	1%
Total	\$56,346,195.00	\$55,862,014.00	\$57,243,061.76	\$56,252,565.23	\$55,081,968.99	\$59,120,079.88	\$55,498,498.86	\$58,833,914.15	



Data Source: Assistant Vice President, Business Office

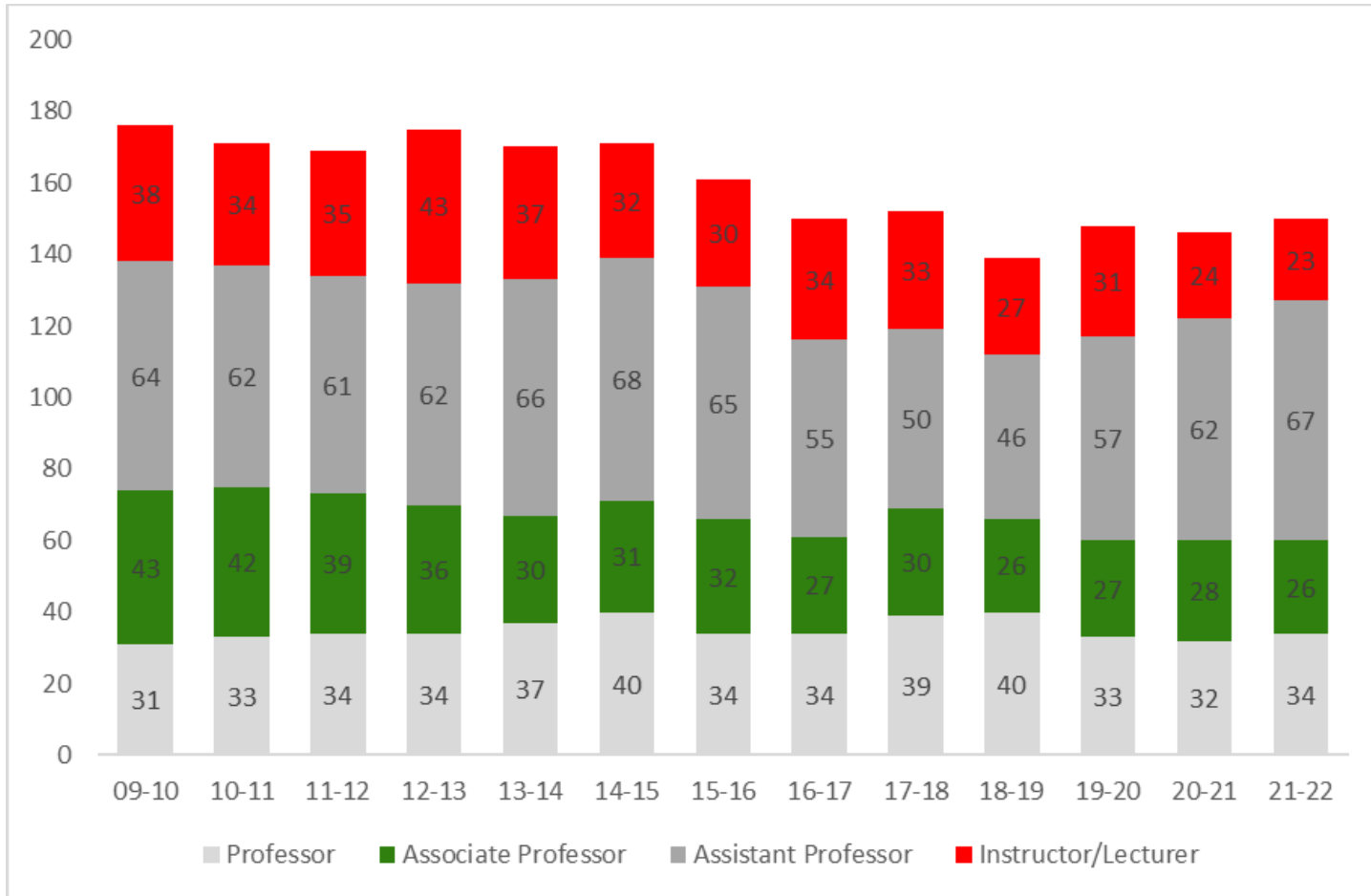
Staff by Job Family and Gender

Fall 2021			
Job Family	Female	Male	Total
0000 Executive/Administrative 1000 Administrative/Managerial	9	14	23
2000 Coaches and Research Associates	39	21	60
3000 Other Professional	51	28	79
4000 Technical and Paraprofessional	17	7	24
5000 Clerical and Secretarial	33	0	33
6000 Skilled Crafts	2	10	12
7000 Services/Maintenance	12	14	26
Total	163	94	257

Data Source: Human Resources-as reported to IPEDS.

Full-time Faculty Rank and Gender Distribution

	09-10	10-11	11-12	12-13	13-14	14-15	15-16	16-17	17-18	18-19	19-20	20-21	21-22
Professor	31	33	34	34	37	40	34	34	39	36	33	32	34
Male	25	27	28	27	27	27	22	22	25	22	18	18	19
Female	6	6	6	7	10	13	12	12	14	14	15	14	15
Associate Professor	43	42	39	36	30	31	32	27	30	27	27	28	26
Male	23	21	18	18	13	13	15	13	13	13	13	14	13
Female	20	21	21	18	17	18	17	14	17	14	14	14	13
Assistant Professor	64	62	61	62	66	68	65	55	50	50	57	62	67
Male	22	25	27	28	32	36	36	30	24	22	22	24	23
Female	42	37	34	34	34	32	29	25	26	28	35	38	44
Instructor/Lecturer	38	34	35	43	37	32	30	34	33	36	31	24	23
Male	13	10	10	9	9	8	5	6	25	7	8	4	6
Female	25	24	25	34	28	24	25	28	14	29	23	20	17
No Academic Rank			13	17	19	27	32	42					
Male	n/a	n/a	1	1	2	1	15**	15					
Female	n/a	n/a	12	16	17	26*	19	27					
Total	176	171	182	192	189	198	193	192	152	149	148	146	150



Data Source: Human Resources as reported to IPEDS (Tenured, non-tenured, on-track).

Average Faculty Salaries by Rank

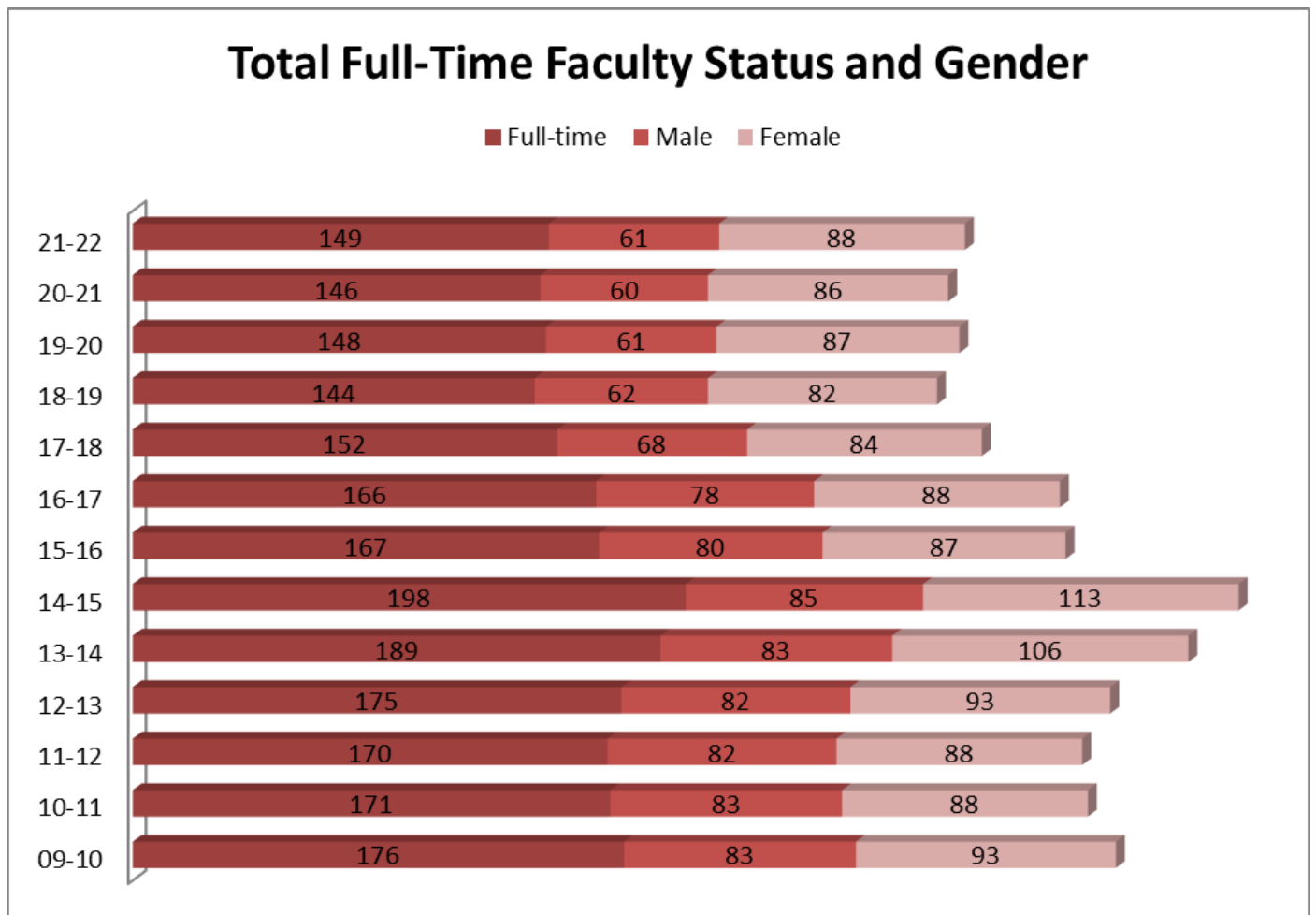
Year	Professor	Associate Professor	Assistant Professor	Instructor	# of Professors	# of Assc. Prof	# of Asst Prof	# of Instructor	All Ranks	Ranks % Chg
2003-04	\$ 58,190	\$ 48,077	\$ 42,238	\$ 37,231	26	42	68	23	\$ 46,434	0.45%
2004-05	\$ 61,576	\$ 48,727	\$ 43,423	\$ 39,608	27	41	68	33	\$ 48,334	4.09%
2005-06	\$ 63,351	\$ 51,518	\$ 44,503	\$ 37,786	29	41	67	35	\$ 49,290	1.98%
2006-07	\$ 64,871	\$ 51,888	\$ 45,812	\$ 34,368	29	41	67	40	\$ 49,235	-0.11%
2007-08	\$ 65,615	\$ 54,956	\$ 48,298	\$ 36,994	32	41	65	42	\$ 51,466	4.53%
2008-09	\$ 68,133	\$ 57,199	\$ 50,974	\$ 36,141	30	44	60	41	\$ 53,112	3.20%
2009-10	\$ 75,235	\$ 57,487	\$ 53,803	\$ 39,459	31	43	64	38	\$ 56,496	6.37%
2010-11	\$ 77,996	\$ 60,755	\$ 55,424	\$ 41,797	33	42	62	34	\$ 58,993	4.42%
2011-12	\$ 77,600	\$ 62,559	\$ 56,044	\$ 42,705	34	39	61	35	\$ 59,727	1.24%
2012-13	\$ 79,167	\$ 64,007	\$ 56,530	\$ 45,399	34	36	62	43	\$ 61,276	2.59%
2013-14	\$ 80,719	\$ 65,138	\$ 56,024	\$ 46,640	37	30	66	37	\$ 62,130	1.39%
2014-15	\$ 80,295	\$ 65,972	\$ 57,004	\$ 47,762	40	31	68	32	\$ 62,758	1.01%
2015-16	\$ 83,196	\$ 68,878	\$ 58,575	\$ 48,731	36	32	66	33	\$ 64,845	3.33%
2016-17	\$ 81,205	\$ 66,037	\$ 57,405	\$ 49,563	34	27	55	34	\$ 64,131	-1.10%
2017-18	\$ 84,115	\$ 65,410	\$ 59,891	\$ 50,859	40	30	50	37	\$ 65,065	1.45%
2018-19	\$ 84,739	\$ 64,951	\$ 60,379	\$ 50,670	40	26	46	27	\$ 66,359	1.98%
2019-20	\$ 86,443	\$ 67,564	\$ 59,892	\$ 56,439	33	27	57	31	\$ 66,489	0.20%
2020-21	\$ 87,157	\$ 68,985	\$ 60,851	\$ 54,276	32	28	62	24	\$ 67,096	0.91%
2021-22	\$ 86,536	\$ 64,216	\$ 62,678	\$ 52,686	34	26	67	23	\$ 66,820	-0.41%

Data Source: Human Resources-as reported in IPEDS

Data Source: Human Resources as reported to IPEDS

Total FT Faculty Status and Gender Distributions

	09-10	10-11	11-12	12-13	13-14	14-15	15-16	16-17	17-18	18-19	19-20	20-21	21-22
Full-time	176	171	170	175	189	198	167	166	152	144	148	146	149
Male	83	83	82	82	83	85	80	78	68	62	61	60	61
Female	93	88	88	93	106	113	87	88	84	82	87	86	88



Data Source: Human Resources as reported to IPEDS

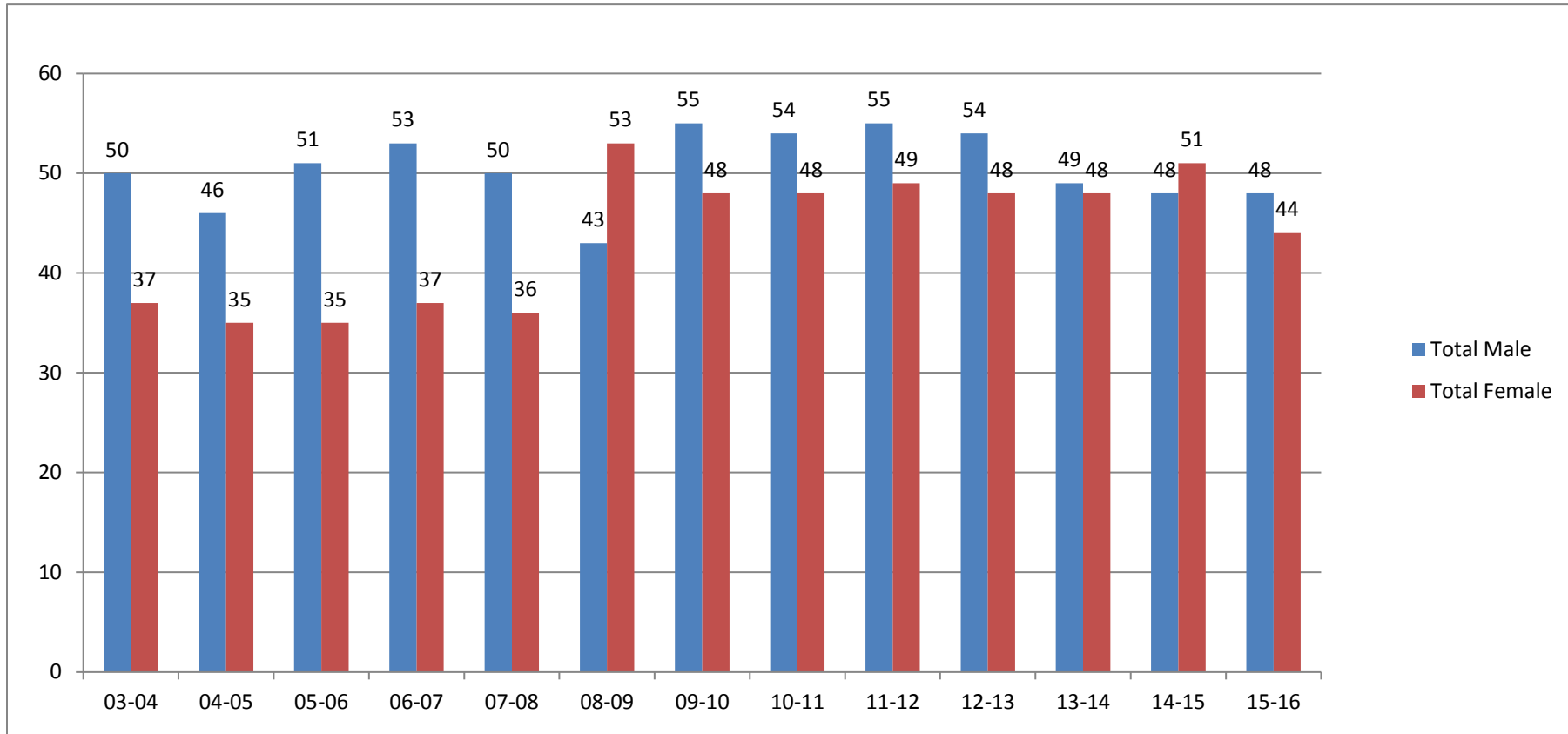
Tenured Faculty: Rank and Gender

	09-10	10-11	11-12	12-13	13-14	14-15	15-16	16-17	17-18	18-19	19-20	20-21	21-22
Professor	30	32	34	34	37	40	36	41	36	41	32	36	33
Male	24	26	28	27	27	27	24	26	23	25	18	20	19
Female	6	6	6	7	10	13	12	15	13	16	14	16	14
Associate Professor	39	38	39	36	30	31	28	23	25	25	24	26	25
Male	22	19	18	18	13	13	15	10	12	13	12	14	13
Female	17	19	21	18	17	18	13	13	13	12	12	12	12
Assistant Professor	34	32	31	32	30	28	28	21	19	18	12	12	13
Male	9	9	9	9	9	8	9	6	6	7	6	6	5
Female	25	23	22	23	21	20	19	15	13	11	6	6	8
Total	103	102	104	102	97	99	92	85	80	84	68	75	71
Total Male	55	54	55	54	49	48	48	42	41	45	35	40	37
Total Female	48	48	49	48	48	51	44	43	39	39	31	35	34

Data Source: Human Resources as reported to IPEDS.

Continued--

Total Tenured Faculty by Year and Gender



Data Resource: Human Resources as reported in IPEDS

Student Activity Fee Distribution

The per-semester fee for full-time students is separated into two portions: the university fee and the Student Government activity fee. The university fee supports activities that benefit the student body as a whole, while the Student Government activity fee goes toward supporting specific activities. The tables below provide a breakdown of the allocation of these fees. These are added to the tuition and are charged per semester.

Student Government Activity Fee	07-08	08-09	09-10	10-11	11-12	12-13	13-14	14-15	15-16	16-17	17-18	18-19	19-20	20-21	21-22
NW Art Center (Art Gallery)	\$2.90	\$2.90	\$0.00	\$0.00	\$2.90	\$2.90	\$2.90	\$2.90	\$2.90	\$2.90	\$2.90	\$3.40	\$4.50	\$3.26	\$3.26
Theatre Arts	\$2.61	\$2.61	\$2.61	\$2.61	\$2.61	\$2.61	\$2.61	\$2.61	\$2.61	\$2.61	\$2.61	\$3.11	\$4.00	\$2.90	\$2.90
Music	\$3.50	\$3.50	\$0.00	\$3.50	\$3.50	\$3.50	\$3.50	\$3.50	\$3.50	\$3.50	\$3.50	\$3.50	\$3.50	\$2.54	\$2.54
Student Tours	\$3.07	\$3.07	\$3.07	\$4.00	\$5.00	\$5.00	\$5.00	\$5.00	\$5.00	\$5.00	\$5.00	\$5.00	\$6.00	\$4.35	\$4.35
Student Government Association	\$21.00	\$27.00	\$27.00	\$27.00	\$27.00	\$30.00	\$30.00	\$30.00	\$30.00	\$30.00	\$35.00	\$35.00	\$35.00	\$25.39	\$25.39
Student Activities	\$15.00	\$25.00	\$25.00	\$25.00	\$25.00	\$29.50	\$29.50	\$29.50	\$29.50	\$29.50	\$35.00	\$35.00	\$35.00	\$25.39	\$25.39
Student Placement	\$17.00	\$17.00	\$22.00	\$26.00	\$26.00	\$26.00	\$26.00	\$26.00	\$26.00	\$26.00	\$26.00	\$26.00	\$26.00	\$18.86	\$18.86
Publications	\$10.08	\$10.08	\$10.08	\$10.08	\$10.08	\$10.08	\$10.08	\$10.08	\$10.08	\$10.08	\$12.08	\$12.08	\$12.08	\$8.76	\$8.76
KMSU	\$3.25	\$3.25	\$3.25	\$3.25	\$3.25	\$3.25	\$3.25	\$3.25	\$3.25	\$3.25	\$3.25	\$3.85	\$3.85	\$3.52	\$3.52
Homecoming	\$6.00	\$9.00	\$9.00	\$9.00	\$9.00	\$9.00	\$9.00	\$9.00	\$9.00	\$9.00	\$9.00	\$9.00	\$9.00	\$6.53	\$6.53
Native American Cultural Center	\$4.00	\$4.00	\$4.00	\$4.00	\$4.00	\$4.00	\$4.00	\$4.00	\$2.00	\$2.00	\$2.00	\$4.00	\$4.00	\$2.90	\$2.90
Building Renovations	\$10.00	\$10.00	\$10.00	\$10.00	\$10.00	\$10.00	\$0.00	\$0.00	\$0.00	\$0.00	\$0.00	\$0.00	\$0.00	\$0.00	\$0.00
Reserve	\$2.03	\$2.03	\$0.00	\$0.00	\$0.00	\$0.00	\$0.05	\$0.05	-\$0.05	\$0.03	\$0.00	\$0.00	\$0.07	\$0.00	\$0.00
Student Gov. Club Funding	\$2.00	\$5.00	\$5.00	\$5.00	\$5.00	\$5.00	\$5.00	\$5.00	\$4.50	\$4.50	\$7.00	\$7.00	\$7.00	\$5.08	\$5.08
Men's Hockey Club	\$7.00	\$10.00	\$10.00	\$12.00	\$13.00	\$17.50	\$17.50	\$17.50	\$17.50	\$22.50	\$22.50	\$22.50	\$22.50	\$16.32	\$16.32
Women's Hockey Club	\$0.00	\$0.00	\$0.00	\$0.00	\$0.00	\$0.00	\$0.00	\$0.00	\$0.00	\$0.00	\$0.00	\$8.50	\$13.50	\$12.33	\$12.33
Mentoring	\$1.50	\$1.50	\$1.50	\$1.50	\$1.50	\$1.50	\$1.50	\$1.50	\$3.00	\$3.00	\$3.00	\$3.00	\$3.00	\$2.18	\$4.18
Tutoring	\$3.00	\$3.00	\$3.00	\$3.00	\$5.00	\$5.00	\$5.00	\$9.00	\$9.00	\$9.00	\$9.00	\$10.00	\$10.00	\$7.26	\$7.26
Beaver Athletic Band	\$0.00	\$2.50	\$2.50	\$2.90	\$2.50	\$2.50	\$2.50	\$2.50	\$2.50	\$2.50	\$2.50	\$2.50	\$2.50	\$1.81	\$1.81
Marching Band	\$0.00	\$0.00	\$0.00	\$0.00	\$3.00	\$3.00	\$3.00	\$3.00	\$3.00	\$3.00	\$5.00	\$5.00	\$5.00	\$3.63	\$3.63
Writing Center Tutors	\$0.00	\$0.00	\$0.00	\$0.00	\$0.00	\$0.00	\$0.00	\$0.00	\$2.00	\$2.00	\$2.00	\$2.00	\$2.00	\$1.45	\$1.45
Flat Tail Press	\$0.00	\$0.00	\$0.00	\$0.00	\$0.00	\$0.00	\$0.00	\$0.00	\$0.00	\$0.00	\$0.00	\$1.00	\$1.00	\$0.73	\$1.73
Hartnett Hall Gallery	\$0.00	\$0.00	\$0.00	\$0.00	\$0.00	\$0.00	\$0.00	\$0.00	\$0.00	\$0.00	\$0.00	\$0.00	\$0.00	\$0.73	\$0.73
Multicultural Support	\$0.00	\$0.00	\$0.00	\$0.00	\$0.00	\$0.00	\$0.00	\$0.00	\$0.00	\$0.00	\$0.00	\$0.00	\$0.00	\$1.81	\$1.81
Total	\$113.94	\$141.44	\$138.01	\$148.84	\$158.34	\$170.34	\$160.39	\$164.39	\$165.29	\$170.37	\$187.34	\$201.44	\$209.50	\$157.73	\$160.73

Data Source: Student Handbook www.minotstateu.edu/student_handbook.pdf

Operating and Contributed Income Ratio

	FY2010	FY2011	FY2012	FY2013	FY2014	FY2015	FY2016	FY2017	FY2018	FY2019	FY2020	FY2021
Tuition and Fees	\$14,010,695	\$14,659,215	\$14,352,120	\$14,051,803	\$14,741,543	\$14,153,131	\$14,715,452	\$15,689,160	\$15,565,350	\$16,037,352	\$15,916,571	\$15,685,199
Federal grants & contracts	\$6,924,802	\$7,107,570	\$6,848,676	\$5,671,745	\$5,326,629	\$4,790,157	\$4,374,818	\$4,153,463	\$4,020,418	\$3,589,861	\$3,082,829	\$3,018,519
State grants and contracts	\$1,612,607	\$997,826	\$1,337,650	\$1,382,889	\$1,502,916	\$1,415,213	\$1,477,826	\$1,620,330	\$1,588,229	\$1,937,550	\$2,404,481	\$2,159,506
Nongovernmental Gifts and Contracts	\$53,271	\$66,715	\$501,149	\$333,594	\$320,129	\$294,588	\$381,477	\$444,286	\$334,433	\$375,022	\$308,613	\$2,999,698
Sales and services – Ed. Depts.	\$998,866	\$1,000,283	\$1,014,901	\$1,217,097	\$1,573,569	\$1,976,214	\$2,053,603	\$1,886,115	\$1,893,275	\$2,061,973	\$1,508,472	\$1,407,981
Auxiliary enterprise	\$3,147,506	\$3,321,354	\$3,975,179	\$4,202,608	\$4,330,493	\$4,209,525	\$4,095,952	\$3,579,800	\$3,398,933	\$3,354,281	\$2,866,757	\$3,037,611
Other operating revenue	\$61,967	\$66,130	\$68,466	\$72,923	\$74,230	\$91,534	\$135,834	\$92,629	\$84,294	\$122,824	\$124,155	\$82,273
Local Appropriations	\$0	\$0	\$0	\$0	\$694,640	\$0	\$0	\$0	\$0	\$0	\$0	\$0
Total	\$26,809,714	\$27,219,093	\$28,138,141	\$26,932,659	\$28,564,149	\$26,930,362	\$27,234,962	\$27,465,783	\$26,884,932	\$27,478,863	\$26,211,878	\$25,690,787
Total Operating Revenue & State**	\$43,897,346	\$45,066,600	\$46,915,209	\$45,994,565	\$49,959,254	\$49,845,468	\$50,894,775	\$48,868,611	\$46,393,499	\$46,970,439	\$45,532,822	\$45,366,916
Operating & Contributed Income Ratio***	61%	60%	60%	59%	57%	54%	54%	56%	58%	59%	58%	57%

Data Source: Assistant Vice President, Business Office Controller

**Sum of Total and State Appropriations

*** Total /Total Revenue and State

Tuition and Fees per Semester

Undergraduate	09-10	10-11	11-12	12-13	13-14	14-15	15-16	16-17	17-18	18-19	19-20	20-21	21-22	% Chg
Resident	\$2,694.88	\$2,818.80	\$2,881.50	\$2,960.88	\$3,043.32	\$3,112.92	\$3,195.12	\$3,284.04	\$3,404.64	\$3,531.84	\$3,795.72	\$3,947.76	\$4,081.65	3.4%
Contiguous States and Provinces	\$2,694.88	\$2,818.80	\$2,881.50	\$2,960.88	\$3,043.32	\$3,112.92	\$3,195.12	\$3,284.04	\$3,404.64	\$3,531.84	\$3,795.72	\$3,947.76	\$4,081.65	3.4%
Minnesota Reciprocity	\$2,694.88	\$2,818.80	\$2,881.50	\$2,960.88	\$3,043.32	\$3,112.92	\$3,195.12	\$3,284.04	\$3,404.64	\$3,531.84	\$3,795.72	\$3,947.76	\$4,081.65	3.4%
WUE**	\$2,694.88	\$2,818.80	\$2,881.50	\$2,960.88	\$3,043.32	\$3,112.92	\$3,195.12	\$3,284.04	\$3,404.64	\$3,531.84	\$3,795.72	\$3,947.76	\$4,081.65	3.4%
Non-Resident	\$2,694.88	\$2,818.80	\$2,881.50	\$2,960.88	\$3,043.32	\$3,112.92	\$3,195.12	\$3,284.04	\$3,404.64	\$3,531.84	\$3,795.72	\$3,947.76	\$4,081.65	3.4%
Graduate	09-10	10-11	11-12	11-12	13-14	14-15	15-16	16-17	17-18	18-19	19-20	20-21	21-22	% Chg
Resident	\$3,392.46	\$3,540.72	\$3,621.53	\$3,719.40	\$3,820.80	\$3,909.84	\$4,011.96	\$4,120.44	\$4,274.64	\$4,436.64	\$4,776.40	\$4,967.64	\$5,131.65	3.3%
Contiguous States & Provinces	\$3,392.46	\$3,540.72	\$3,621.53	\$3,719.40	\$3,820.80	\$3,909.84	\$4,011.96	\$4,120.44	\$4,274.64	\$4,436.64	\$4,776.40	\$4,967.64	\$5,131.65	3.3%
WUE**	\$3,392.46	\$3,540.72	\$3,621.53	\$3,719.40	\$3,820.80	\$3,909.84	\$4,011.96	\$4,120.44	\$4,274.64	\$4,436.64	\$4,776.40	\$4,967.64	\$5,131.65	3.3%
Minnesota Reciprocity	\$3,392.46	\$3,540.72	\$3,621.53	\$3,719.40	\$3,820.80	\$3,909.84	\$4,011.96	\$4,120.44	\$4,274.64	\$4,436.64	\$4,776.40	\$4,967.64	\$5,131.65	3.3%
Non-Resident	\$3,392.46	\$3,540.72	\$3,621.53	\$3,719.40	\$3,820.80	\$3,909.84	\$4,011.96	\$4,120.44	\$4,274.64	\$4,436.64	\$4,776.40	\$4,967.64	\$5,131.65	3.3%

Tuitions and fees are for all courses. The tuition and fees at 12 credits. Undergraduates may take up to 18 credits before an additional fee is charged. Graduate credits are capped at 12 credits for the tuition noted above. A full-time student, for tuition purposes, is a person who is enrolled in 12 or more semester hours of credit. The cost of tuition and fees for part-time enrollments is prorated.

** Western Undergraduate Exchange Enrollment. In 2005-06, states that are a member of WUE include: Alaska, Arizona, California, Colorado, Hawaii, Idaho, Nevada, New Mexico, Oregon, Utah, Washington, Wyoming and Commonwealth of the Northern Marianas Islands (CNMI). Montana and South Dakota are also members of WUE, students from these states receive the contiguous tuition rate.

FACTBOOK: Technology at Minot State University

Information Technology (IT) is a strategic necessity for Minot State University. Fundamental tools including e-mail, calendaring, file sharing, telephone, and Web access are important for administrative, academic, and research functions, and basic day-to-day operations. High-speed networking and performance computing, collaborative voice, video, and data tools, and other advanced technology services create innovative opportunities for the institution.

Reliable and redundant network infrastructure is the backbone on which all other services depend. IT infrastructure refers to the entire technology architecture that supports student, faculty, staff, and administrative computing activities on campus and from a distance. Components that make up the current technology architecture include, but are not limited to, switched and routed network backbone, wireless Internet access, and production support servers and appliances (file and print, backup, web, network support, directory services, CCTV cameras, firewall, filtering/bandwidth management, intrusion detection, patch management, antivirus gateway, remote access control, rapid application deployment, network/application resource monitoring, and secure network access).

The network infrastructure is the key component to support expanding technological developments across campus. The wired network needs to be reliable, robust, and secure transport system to meet the needs of the campus community and support access to the latest voice, data, and video technologies. Today, all edge switches support transfer rates up to 1 Gigabyte per second (1000 Mbps) from the core to the desktop and 10 Gigabytes per second on the campus backbone. A centralized data center with optimized environmental controls and expansion capability to house and support campus fiber connectivity an air-blown, single-mode fiber network infrastructure.

Infrastructure binds information technology systems together and allows systems to communicate with each other over a network. MSU participates in StageNET, the state-funded wide area network (WAN) consortium. StageNET offers reliable, cost-effective network services, enables convergence of voice, data, and video, and provides linkage through Internet2 and the Northern Tier Network to national and international research and development networks. Recent StageNET upgrades increase the state backbone to a 10 gigabit/second Ethernet ring with redundant failover links located in Fargo, Grand Forks, Minot, and Bismarck.

A critical component of the current and future technology infrastructure is security. In the past, access to computing and network resources was maintained in a relatively controlled environment with minimal remote or online access. Extensive availability to information over the network/Internet and via Web-based applications has increased the risk of unauthorized access and/or inappropriate use of information. Data security measures have been implemented, especially with regard to systems containing large amounts of personal information. Users are required to pass additional verification to access sensitive areas with Two-factor authentication.

A single user id and password is used on all major systems for all faculty, staff, and students. User authentication is required to access campus online resources including Campus Connection, wireless, Office 365, etc. The campus ID card system is designed to simplify access to services, events, and secure locations throughout campus. Security cameras are strategically located in campus buildings and selected outside areas (parking lots, etc.) to maximize visual security for all campus constituents. Other

security and data protection initiatives in place relate to regular patching of critical systems, robust antivirus, and reliable archives (real-time on and offsite storage, disk-to-disk) of critical data in the event of hardware or application failure. The Assurance emergency notification system ensures timely notifications to all faculty, staff, and students in the event of a campus, local, or regional emergency. Blue lights, campus-wide speaker system, and “panic” buttons are in place for emergency and informational needs.

Information technology is an important component of the instructional and learning experience and is integral to research, teaching, and learning. MSU supports computers in numerous general access, specialized training, and teaching labs on campus and at the Minot Air Force Base Education Center. Software for campus labs is distributed and maintained from a common set of software images providing timely distribution, rapid install application packages, and critical Windows and antivirus signature file updates. Internet capable learning spaces and kiosks are strategically located across campus to “informally” engage students in learning opportunities. Computer systems equipped with assistive technologies including large monitors, monitor lifts, etc., are made available in open-access computer labs for persons with disabilities or special needs. Email is required for all students to receive official campus communications regarding Add/Drop Deadlines, Registration Information, Financial Aid, Campus Events, Emergency Notices, and more. Additional functionality with Office 365 for students is online space for file storage, file sharing, collaboration, and access to a free download of Office 365 ProPlus (MS Word, Excel, PowerPoint, etc.), a Microsoft workforce readiness initiative. Collaborative spaces are available to allow students to work on projects as a group.

Students attending Minot State University join a community of people devoted to creating and sharing information—activities that can be enhanced by information technology. Whether a full- or part-time student, living on campus or commuting, technology is available that allows for communication, personal development, and getting together (in person and virtually). BlackBoard Learn is the campus course management system supporting fully online courses as well as “blended courses” in which faculty enhance their face-to-face classes with interactive online learning experiences. Multiple programs are currently available totally online. Online orientation and full library services are available to all students. Blackboard supports deployable hosted and 3rd party building blocks for added functionality including Blackboard Collaborate, YuJa lecture capture, Mobile Web, Cloud Services, Respondus lock down browser for secure testing, SafeAssign, and other product integrations. Blackboard Learn empowers instructors to engage every learner by motivating them on the personal devices they rely on. The majority of classrooms have been configured to support both face-to-face students and distance students in a synchronous hyflex environment. Students in the classroom and online are able to see, hear, and interact with each other and the instructor.

Collaborative teaching tools provide interactive and engaged teaching and learning environment for faculty and students. A majority of the classrooms on campus are equipped with permanently installed video projection systems, PTZ and Document Cameras, Ceiling Microphones and other technology enhancements. Blackboard Collaborate, Microsoft Teams, Zoom and SharePoint create access points for faculty and students to engage in document sharing and team-based learning. Incorporating smartphones and iPads/tablets have increased the level of collaboration for students and faculty in the classroom. Classroom technology, whether permanently installed or delivered on demand, is available in all academic buildings. Videoconferencing software is available for both PCs and Macs to allow users to join a traditional IVN class in session from their home or office or collaborate via “Meet Me”, bridging the “on site” requirement gap. Through an NDUS sponsored initiative, a lecture capture system is now available in all video equipped classrooms. YuJa lecture capture makes class time available all the time

for students by automatically capturing, storing and indexing every class session for replay to be accessed online at a later time via laptop, iPad, tablet, or a variety of other mobile devices.

Centralized IT staff provides support for a broad range of technology-enhanced services for faculty, staff, and students. Increased availability of and access to computing resources requires equally robust support services that make it easier for all students to succeed. MSU recognizes the strong connection between the quality of education and the quality of technology services available to students. IT Central (ITC) is a centrally located service organization comprised of a director of desktop services, director of network services, network operations manager, mac/classroom specialist, security control officer, helpdesk coordinator, wiring technician, and Web designer/developer. In addition to working in a specific area of specialization, all technicians provide desktop support and actively test and evaluate new server- and network-based technologies to achieve increased flexibility and improve system responsiveness.

The Help Desk is a significant component of ITC. Requests may be submitted online at <https://www.minotstateu.edu/helpdesk> or by emailing helpdesk@minotstateu.edu. The office in Old Main 108 is open Monday-Friday from 7:30am-4:30pm and is the University's first line of support relative to computer software and hardware issues, the use of instructional technology, access to server support services, and resolution of network-related problems. Help Desk services for students include hardware and software installation, equipment checkout (laptop, desktop, camera, projector, microphone, etc.), removal of spyware and computer viruses, file storage, Web space, and software downloads, available free to all students. Wired and wireless Internet access is available in the residence halls and across campus free of charge. There are over 1200 active data ports and 250+ wireless access points.

Rev: 11/2021