

FACT BOOK



Be seen. Be heard. Be empowered.

Mission Statement

The Office of Institutional Research at Minot State University supports the university's planning and decision-making efforts so that the university can fulfill its larger mission. The office responds to requests from constituencies of the university in order to support decision making, assessment, policy analysis, effective management, projections and planning. It also responds to requests for information from outside agencies and other institutions and generates annual fact books and reports showing trends and comparisons to the North Dakota University System.

The goals of IR are to ensure that reports and analyses are accurate, timely and useful to Minot State University students, administrators, faculty and staff. To guarantee that MSU's mission is carried forward, the institutional research director works carefully to ensure that files dealing with student course and personnel data are as accurate and consistent as possible.

Accrediting Agencies

The Higher Learning Commission

30 N. LaSalle Street, Ste 2400, Chicago, IL
(800) 621-7440 — www.hlcommission.org

National Association of Schools of Music

11250 Roger Bacon Drive, Suite 21, Reston, VA 20190-5248

North Dakota Education Standards and Practices Board

2718 Gateway Avenue, Suite 204, Bismarck, ND 58503-0585, (701) 328-9641

Council for the Accreditation of Educator Preparation (CAEP)

1140 19th St NW, Suite 400, Washington, DC 20036

Council on Academic Accreditation in Audiology and Speech Language Pathology of the American Speech-Language-Hearing Association

10801 Rockville Pike, Rockville, MD 20852-3279

Council on Social Work Education-Baccalaureate level

1600 Duke Street, Alexandria, VA 22314-3421

International Accreditation Council for Business Education

PO Box 25217, Overland Park, KS 66225, (913) 631-3009

Commission on Collegiate Nursing Education

655 K Street NW, Suite 750, Washington, DC 20001, 202-887-6791

National Association of School Psychologists

PO Box 791089, Baltimore, MD 21279-1089

North Dakota Board of Nursing

919 7th Street, Suite 504, Bismarck, ND 58504-5881

National Addiction Studies Accreditation Commission (NASAC)

1001 North Fairfax Street, Suite 201, Alexandria, VA 22314

Administrative Offices

Academic Affairs

Vice President for Academic Affairs -----	Laurie Gellar
Assistant Vice President for Academic Affairs-----	Alaric Williams
Executive Director, ND Center for Persons with Disabilities -----	Lori Garnes
Director, of Graduate School-----	Linda Cresap
Director, Library-----	Jane la Plante
Director, Academic Support Center -----	Heather Martin
Director, Office of Sponsored Programs -----	Amy Armstrong
Registrar -----	Rebecca Ringham
Director, Institutional Research -----	Cari Olson
Director, POWER and TRiO-----	Katy Allers
Director Institutional Assessment-----	Nathan Anderson
Director, Looyenga Leadership Center-----	Jim Sturm

College of Arts and Sciences

Chair, Division of Art, Broadcasting, and Professional Communication---	Linda Olson
Chair, Division of Languages and Cultural Studies-----	Robert Kibler
Chair, Department of Mathematics and Computer Science -----	Darren Seifert
Chair, Division Performing Arts-----	David Rolandson
Chair, Division of Science -----	Bryan Schmidt
Chair, Department of Biology-----	Heidi Super
Chair, Division of Social Science -----	Dan Ringrose
Chair, Department of Criminal Justice-----	Gary Rabe
Director, Northwest Arts Center -----	Greg Vettel

College of Business

Chair, Department of Accounting and Finance-----	Jay Wahlund
Chair, Department of Business Information Technology-----	Kristi Berg
Chair, Business Administration -----	Andy Bertsch
Director, Severson Entrepreneurship Academy-----	Randy Conway

College of Education and Health Sciences

Chair, Department of Communication Disorders -----	Mary Huston
Chair, Department of Teacher Education and Kinesiology-----	Dan Conn
Director, Teacher Education Unit-----	Lisa Borden-King
Director, Advisement and Field Placement -----	Kathy Hintz
Chair, Department of Addiction Studies/Psych/Social Work -----	Vicki Michels
Director, Social Work -----	Nancy Gordon
Chair, Department of Nursing -----	Amy Lee
Chair, Department of Special Education-----	Holly Pedersen

Interdisciplinary Programs

Director, Honors Program in Engagement and Scholarship (HOPES) ----- Jessica Smestad
 Director, Interdisciplinary Studies -----Sophia Rammell

Student Affairs

Vice President for Student Affairs ----- Kevin Harmon
 Director, Dining Services (Sodexo) -----Alan Anderson
 Director, International Programs----- Malaecha Latif
 Director, Multicultural Support Services ----- Annette Mennem
 Director, Residence Life ----- Karina Stander
 Director, Student Center ----- Leon Perzinski
 Director, Student Health Center ----- Deb Haman
 Director, Military Resource Center-----Andrew Heitkamp
 Director, Wellness Center----- Paul Brekke

Administration and Finance

Vice President for Administration and Finance ----- VACANT
 Assistant Vice President, Business Services/Controller ----- Jonelle Watson
 Director, Facilities Management ----- Brian Smith
 Director, Information Technology Center ----- Lisa Haman
 ----- Darren Olson
 Director, Human Resources ----- Sara Abrahamson
 Director, Safety and Security ----- Gary Orluck
 Director, Financial Aid ----- Laurie Weber
 Manager, Bookstore ----- Tiffany Heth

Advancement

Vice President for Advancement ----- Rick Hedberg
 Director, Publications and Design ----- Doreen Wald
 Director, University Communications-----Michael Linnell
 Director, Alumni Engagement ----- Courtenay Brekhus
 Development Officer, Major Gifts/Data Analyst----- Abbie Eads
 Development Officer/Beaver Boosters----- Jeremy Feller
 Development Officer.....Pat Slotsve
 Director, Foundation Operations ----- Kate Marshall

Enrollment, Marketing, and Outreach

Vice President----- Jacek Mrozik
 Director, Enrollment Services ----- Michelle Sayler
 Director, Marketing ----- Cole Krueger

University Athletics

Director, Athletics ----- Kevin Forde

Assistant Director for Internal Operations-----	Ryan Beckner
Assistant Director for External Operations-----	Janna McKechnie
Faculty Athletic Representative-----	Kristi Berg
Assistant Director of Athletics for Communications/Media-----	Mike Stetson
Assistant Director of Athletics for Revenue/Fan Development-----	Daniel Schuetz
Assistant Director of Athletics for Compliance/Student Life-----	Jordan Quinlan
Assistant Director of Athletics for Hospitality-----	Diana Stetson
Head Baseball Coach-----	Sam Boisner
Head Men's Basketball Coach-----	Matt Murken
Head Women's Basketball Coach-----	Mike Brandt
Head Cross Country & Track & Field Coach-----	Greggmar Swift
Head Football Coach-----	Ian Shields
Head Men's/Women's Golf Coach-----	Eli Mihalick
Head Women's Soccer Coach-----	T. J. Perez
Head Softball Coach-----	Sal Rodriguez
Head Volleyball Coach-----	Alex Lehocky
Head Women's Wrestling Coach-----	Brittney Mitchem
Head Women's Hockey Coach-----	Ryan Miner
Head Men's Hockey Coach -----	Wyatt Waselenchuk
Head Men's Wrestling Coach-----	Evan Forde

***Board of Regents
Executive Committee***

Executive Chair-----	Tom Rafferty
Past Executive Chair-----	Brenda Foster
MSU President-----	Steven Shirley
Treasurer-----	TBD
Secretary-----	Rick Hedberg
Chair-Elect -----	Brekka Kramer
Member-at-Large -----	Randy Burckhard

***MSU Alumni Association
Board of Directors***

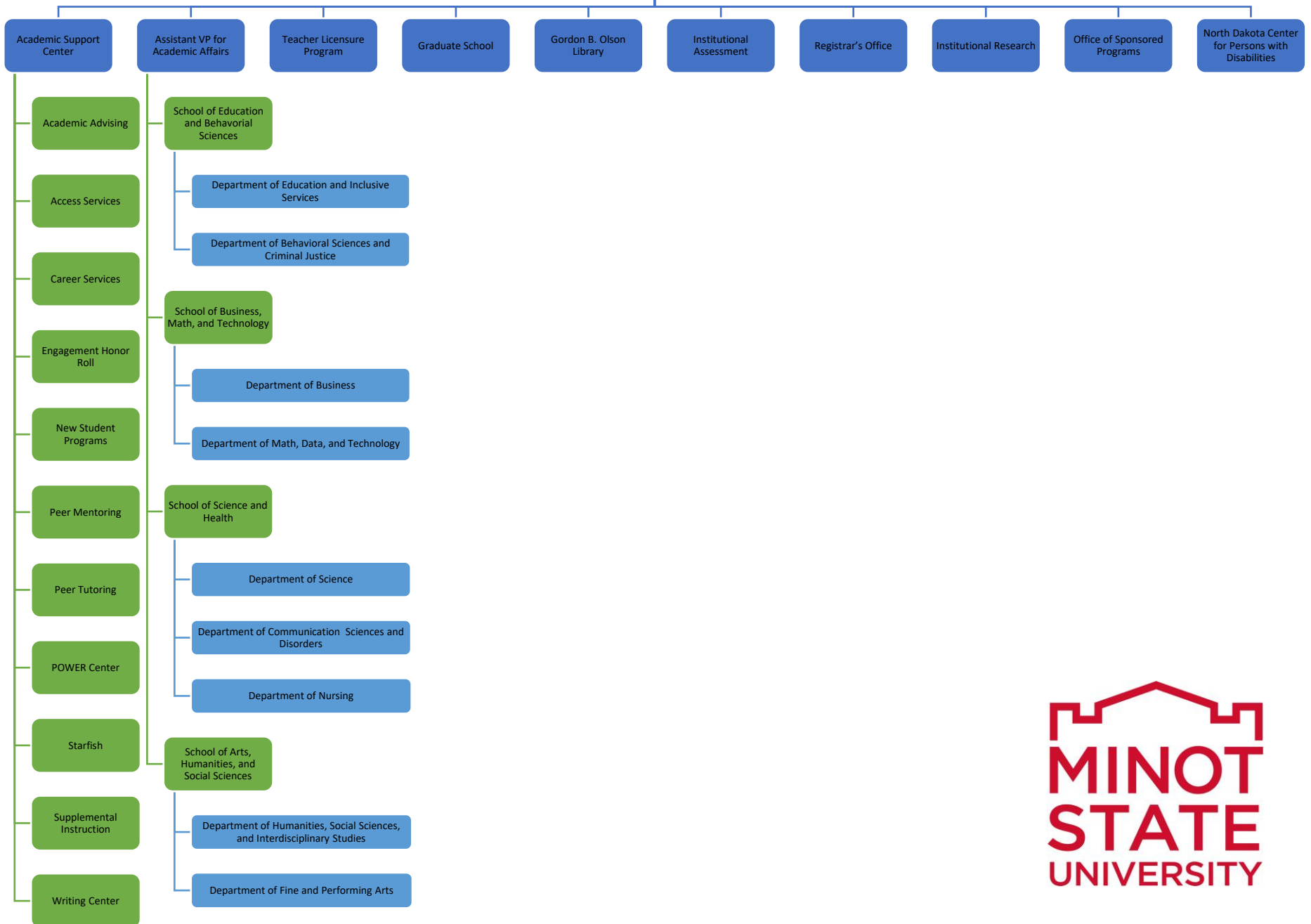
Executive Committee

Past President -----	Jaimie Jundt Brunner
President -----	TBD
President Elect -----	TBD
Vice President for Promotions-----	Ben Berg
Vice President for Events -----	Danielle Rued
Vice President for Outreach-----	McKenna Gudmunson
Director of Annual Giving and Alumni Relations-----	Courtenay Brekhus
MSU President -----	Steven Shirley

Members

Pam Andrist, Ben Berg, Jaimie Brunner, Niki Carlson, Julie Drady, Brandi Fjeld, Greg Fjeld, McKenna Gudmunson, Jamie Hammer, Breanna Keller, Kari Lysne, Danielle Rued, Nancy Tschetter, Britt Valdez, Janelle Verhey, Trent Westmeyer, Audra Butler

VP for Academic Affairs





North Dakota University System (NDUS)

The staff of North Dakota University System supports the State Board of Higher Education's mission to enhance the quality of life for all those served by the NDUS as well as the economic and social vitality of North Dakota. NDUS and its affiliated organizations are committed to providing quality higher education as they work with the 11 institutions that serve our students. To view the NDUS organizational chart and about the organizational structure of the system staff and the individuals who comprise the team visit <https://ndus.edu/ndus-overview/ndus-office-staff/>.

FACTBOOK: Technology at Minot State University

Information Technology (IT) is a strategic necessity for Minot State University. Fundamental tools including e-mail, calendaring, file sharing, telephone, and Web access are important for administrative, academic, and research functions, and basic day-to-day operations. High-speed networking and performance computing, collaborative voice, video, and data tools, and other advanced technology services create innovative opportunities for the institution.

Reliable and redundant network infrastructure is the backbone on which all other services depend. IT infrastructure refers to the entire technology architecture that supports student, faculty, staff, and administrative computing activities on campus and from a distance. Components that make up the current technology architecture include, but are not limited to, switched and routed network backbone, wireless Internet access, and production support servers and appliances (file and print, backup, web, network support, directory services, CCTV cameras, firewall, filtering/bandwidth management, intrusion detection, patch management, antivirus gateway, remote access control, rapid application deployment, network/application resource monitoring, and secure network access).

The network infrastructure is the key component to support expanding technological developments across campus. The wired network needs to be reliable, robust, and secure transport system to meet the needs of the campus community and support access to the latest voice, data, and video technologies. Today, all edge switches support transfer rates up to 1 Gigabyte per second (1000 Mbps) from the core to the desktop and 10 Gigabytes per second on the campus backbone. A centralized data center with optimized environmental controls and expansion capability to house and support campus fiber connectivity an air-blown, single-mode fiber network infrastructure.

Infrastructure binds information technology systems together and allows systems to communicate with each other over a network. MSU participates in StageNET, the state-funded wide area network (WAN) consortium. StageNET offers reliable, cost-effective network services, enables convergence of voice, data, and video, and provides linkage through Internet2 and the Northern Tier Network to national and international research and development networks. Recent StageNET upgrades increase the state backbone to a 10 gigabit/second Ethernet ring with redundant failover links located in Fargo, Grand Forks, Minot, and Bismarck.

A critical component of the current and future technology infrastructure is security. In the past, access to computing and network resources was maintained in a relatively controlled environment with minimal remote or online access. Extensive availability to information over the network/Internet and via Web-based applications has increased the risk of unauthorized access and/or inappropriate use of information. Data security measures have been implemented, especially with regard to systems containing large amounts of personal information. Users are required to pass additional verification to access sensitive areas with Two-factor authentication.

A single user id and password is used on all major systems for all faculty, staff, and students. User authentication is required to access campus online resources including Campus Connection, wireless, Office 365, etc. The campus ID card system is designed to simplify access to services, events, and secure locations throughout campus. Security cameras are strategically located in campus buildings and selected outside areas (parking lots, etc.) to maximize visual security for all campus constituents. Other

security and data protection initiatives in place relate to regular patching of critical systems, robust antivirus, and reliable archives (real-time on and offsite storage, disk-to-disk) of critical data in the event of hardware or application failure. The Assurance emergency notification system ensures timely notifications to all faculty, staff, and students in the event of a campus, local, or regional emergency. Blue lights, campus-wide speaker system, and “panic” buttons are in place for emergency and informational needs.

Information technology is an important component of the instructional and learning experience and is integral to research, teaching, and learning. MSU supports computers in numerous general access, specialized training, and teaching labs on campus and at the Minot Air Force Base Education Center. Software for campus labs is distributed and maintained from a common set of software images providing timely distribution, rapid install application packages, and critical Windows and antivirus signature file updates. Internet capable learning spaces and kiosks are strategically located across campus to “informally” engage students in learning opportunities. Computer systems equipped with assistive technologies including large monitors, monitor lifts, etc., are made available in open-access computer labs for persons with disabilities or special needs. Email is required for all students to receive official campus communications regarding Add/Drop Deadlines, Registration Information, Financial Aid, Campus Events, Emergency Notices, and more. Additional functionality with Office 365 for students is online space for file storage, file sharing, collaboration, and access to a free download of Office 365 ProPlus (MS Word, Excel, PowerPoint, etc.), a Microsoft workforce readiness initiative. Collaborative spaces are available to allow students to work on projects as a group.

Students attending Minot State University join a community of people devoted to creating and sharing information—activities that can be enhanced by information technology. Whether a full- or part-time student, living on campus or commuting, technology is available that allows for communication, personal development, and getting together (in person and virtually). BlackBoard Learn is the campus course management system supporting fully online courses as well as “blended courses” in which faculty enhance their face-to-face classes with interactive online learning experiences. Multiple programs are currently available totally online. Online orientation and full library services are available to all students. Blackboard supports deployable hosted and 3rd party building blocks for added functionality including Blackboard Collaborate, YuJa lecture capture, Mobile Web, Cloud Services, Respondus lock down browser for secure testing, SafeAssign, and other product integrations. Blackboard Learn empowers instructors to engage every learner by motivating them on the personal devices they rely on. The majority of classrooms have been configured to support both face-to-face students and distance students in a synchronous hyflex environment. Students in the classroom and online are able to see, hear, and interact with each other and the instructor.

Collaborative teaching tools provide interactive and engaged teaching and learning environment for faculty and students. A majority of the classrooms on campus are equipped with permanently installed video projection systems, PTZ and Document Cameras, Ceiling Microphones and other technology enhancements. Blackboard Collaborate, Microsoft Teams, Zoom and SharePoint create access points for faculty and students to engage in document sharing and team-based learning. Incorporating smartphones and iPads/tablets have increased the level of collaboration for students and faculty in the classroom. Classroom technology, whether permanently installed or delivered on demand, is available in all academic buildings. Videoconferencing software is available for both PCs and Macs to allow users to join a traditional IVN class in session from their home or office or collaborate via “Meet Me”, bridging the “on site” requirement gap. Through an NDUS sponsored initiative, a lecture capture system is now available in all video equipped classrooms. YuJa lecture capture makes class time available all the time

for students by automatically capturing, storing and indexing every class session for replay to be accessed online at a later time via laptop, iPad, tablet, or a variety of other mobile devices.

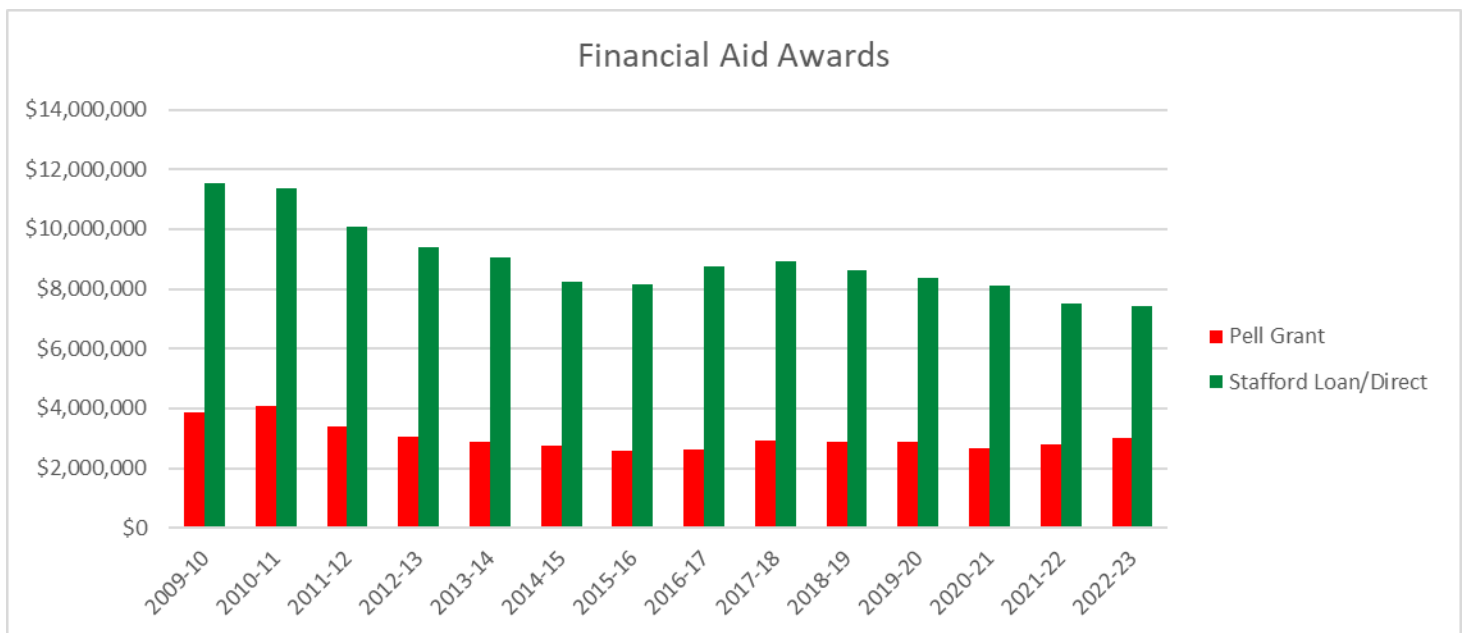
Centralized IT staff provides support for a broad range of technology-enhanced services for faculty, staff, and students. Increased availability of and access to computing resources requires equally robust support services that make it easier for all students to succeed. MSU recognizes the strong connection between the quality of education and the quality of technology services available to students. IT Central (ITC) is a centrally located service organization comprised of a director of desktop services, director of network services, network operations manager, mac/classroom specialist, security control officer, helpdesk coordinator, wiring technician, and Web designer/developer. In addition to working in a specific area of specialization, all technicians provide desktop support and actively test and evaluate new server- and network-based technologies to achieve increased flexibility and improve system responsiveness.

The Help Desk is a significant component of ITC. Requests may be submitted online at <https://www.minotstateu.edu/helpdesk> or by emailing helpdesk@minotstateu.edu. The office in Old Main 108 is open Monday-Friday from 7:30am-4:30pm and is the University's first line of support relative to computer software and hardware issues, the use of instructional technology, access to server support services, and resolution of network-related problems. Help Desk services for students include hardware and software installation, equipment checkout (laptop, desktop, camera, projector, microphone, etc.), removal of spyware and computer viruses, file storage, Web space, and software downloads, available free to all students. Wired and wireless Internet access is available in the residence halls and across campus free of charge. There are over 1200 active data ports and 250+ wireless access points.

Rev: 11/2021

Type of Aid and Dollar Amount by Year

Academic Year	Work Study	Perkins	SEOG	Pell Grant	Stafford Loan/Direct	Total
2003-04	\$280,767	\$620,393	\$160,088	\$3,373,066	\$9,837,158	\$14,271,472
2004-05	\$211,054	\$609,178	\$119,375	\$3,179,660	\$9,197,139	\$13,316,406
2005-06	\$204,128	\$390,183	\$158,731	\$2,778,715	\$11,300,779	\$14,832,536
2006-07	\$169,616	\$308,403	\$113,024	\$2,614,624	\$10,613,747	\$13,819,414
2007-08	\$147,415	\$441,995	\$110,400	\$2,709,891	\$11,054,729	\$14,464,420
2008-09	\$123,373	\$457,753	\$122,255	\$2,744,696	\$11,369,905	\$14,817,982
2009-10	\$161,269	\$486,816	\$119,050	\$3,886,671	\$11,537,403	\$16,191,209
2010-11	\$154,262	\$314,304	\$91,261	\$4,085,030	\$11,370,864	\$16,015,721
2011-12	\$122,190	\$394,025	\$124,566	\$3,393,829	\$10,083,494	\$14,118,104
2012-13	\$93,492	\$340,169	\$139,114	\$3,035,256	\$9,411,803	\$13,019,834
2013-14	\$167,849	\$331,786	\$119,786	\$2,877,951	\$9,051,486	\$12,548,858
2014-15	\$142,597	\$444,015	\$122,230	\$2,763,019	\$8,238,523	\$11,710,384
2015-16	\$145,503	\$451,618	\$127,616	\$2,572,038	\$8,135,560	\$11,432,335
2016-17	\$117,956	\$395,601	\$141,660	\$2,629,443	\$8,732,672	\$12,019,322
2017-18	\$138,926	\$279,300	\$140,100	\$2,906,900	\$8,916,226	\$12,318,452
2018-19	\$126,892	\$0	\$141,620	\$2,891,795	\$8,632,396	\$11,792,703
2019-20	\$126,875	\$0	\$135,344	\$2,901,533	\$8,377,717	\$11,541,469
2020-21	\$83,131	\$0	\$161,466	\$2,656,973	\$8,106,987	\$11,008,557
2021-22	\$92,812	\$0	\$167,500	\$2,814,663	\$7,497,054	\$10,572,029
2022-23	\$96,582	\$0	\$159,211	\$3,005,431	\$7,420,932	\$10,682,156



Data Source: Office of Financial Aid and previously released MSU Factbook.

Average Faculty Salaries by Rank

Year	Professor	Associate Professor	Assistant Professor	Instructor	# of Professors	# of Assc. Prof	# of Asst Prof	# of Instructor	All Ranks	Ranks % Chg
2003-04	\$ 58,190	\$ 48,077	\$ 42,238	\$ 37,231	26	42	68	23	\$ 46,434	0.45%
2004-05	\$ 61,576	\$ 48,727	\$ 43,423	\$ 39,608	27	41	68	33	\$ 48,334	4.09%
2005-06	\$ 63,351	\$ 51,518	\$ 44,503	\$ 37,786	29	41	67	35	\$ 49,290	1.98%
2006-07	\$ 64,871	\$ 51,888	\$ 45,812	\$ 34,368	29	41	67	40	\$ 49,235	-0.11%
2007-08	\$ 65,615	\$ 54,956	\$ 48,298	\$ 36,994	32	41	65	42	\$ 51,466	4.53%
2008-09	\$ 68,133	\$ 57,199	\$ 50,974	\$ 36,141	30	44	60	41	\$ 53,112	3.20%
2009-10	\$ 75,235	\$ 57,487	\$ 53,803	\$ 39,459	31	43	64	38	\$ 56,496	6.37%
2010-11	\$ 77,996	\$ 60,755	\$ 55,424	\$ 41,797	33	42	62	34	\$ 58,993	4.42%
2011-12	\$ 77,600	\$ 62,559	\$ 56,044	\$ 42,705	34	39	61	35	\$ 59,727	1.24%
2012-13	\$ 79,167	\$ 64,007	\$ 56,530	\$ 45,399	34	36	62	43	\$ 61,276	2.59%
2013-14	\$ 80,719	\$ 65,138	\$ 56,024	\$ 46,640	37	30	66	37	\$ 62,130	1.39%
2014-15	\$ 80,295	\$ 65,972	\$ 57,004	\$ 47,762	40	31	68	32	\$ 62,758	1.01%
2015-16	\$ 83,196	\$ 68,878	\$ 58,575	\$ 48,731	36	32	66	33	\$ 64,845	3.33%
2016-17	\$ 81,205	\$ 66,037	\$ 57,405	\$ 49,563	34	27	55	34	\$ 64,131	-1.10%
2017-18	\$ 84,115	\$ 65,410	\$ 59,891	\$ 50,859	40	30	50	37	\$ 65,065	1.45%
2018-19	\$ 84,739	\$ 64,951	\$ 60,379	\$ 50,670	40	26	46	27	\$ 66,359	1.98%
2019-20	\$ 86,443	\$ 67,564	\$ 59,892	\$ 56,439	33	27	57	31	\$ 66,489	0.20%
2020-21	\$ 87,157	\$ 68,985	\$ 60,851	\$ 54,276	32	28	62	24	\$ 67,096	0.91%
2021-22	\$ 86,536	\$ 64,216	\$ 62,678	\$ 52,686	34	26	67	23	\$ 66,820	-0.41%
2022-23	\$ 85,972	\$ 68,149	\$ 65,119	\$ 54,728	32	22	63	26	\$ 68,362	2.30%
2023-24	\$ 92,449	\$ 72,987	\$ 69,587	\$ 57,959	29	27	74	15	\$ 73,546	7.58%

Data Source: Human Resources as reported to IPEDS

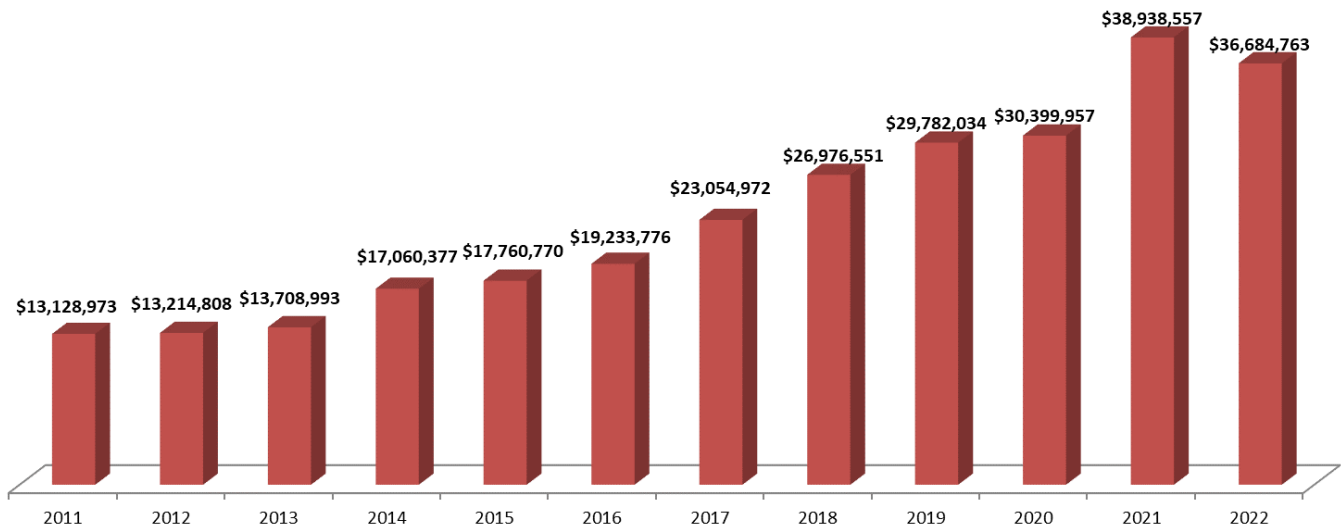
Center for Extended Learning Details by Program

<u>Duplicated Enrollments</u>														
	2010	2011	2012	2013	2014	2015	2016	2017	2018	2019	2020	2021	2022	2023
MAFB	355	225	270	282	318	301	321	245	223	179	122	52	86	90
	2010	2011	2012	2013	2014	2015	2016	2017	2018	2019	2020	2021	2022	2023
Online Asynchronous	2392	2357	2165	2279	2038	2035	2180	2069	2101	2352	2954	2956	3030	3089
Online Synchronous			49	65	65	64	15	0	2	45	901	567	463	367
	2010	2011	2012	2013	2014	2015	2016	2017	2018	2019	2020	2021	2022	2023
IVN	75	46	72	65	51	24	81	85	89	74	65	54	19	0
Dual Credit (Early Entry) Enrollment	186	227	233	244	199	164	241	181	196	252	201	218	236	189
Bismarck	260	225	267	260	156	156	124	83	92	145	125	87	77	54
Independent Study (formerly Correspondence)	37	17	18	20	23	22	34	29	25	28	39	48	32	32
Fargo			106	136	131	144	144	145	177	186	98	97	60	59

Endowment Assets of Development Foundation
(Market Value)

Fiscal Year	*Amount	% Change
2011	\$13,128,973	15.40%
2012	\$13,214,808	0.65%
2013	\$13,708,993	3.74%
2014	\$17,060,377	24.27%
2015	\$17,760,770	4.11%
2016	\$19,233,776	8.29%
2017	\$23,054,972	19.87%
2018	\$26,976,551	17.00%
2019	\$29,782,034	10.40%
2020	\$30,399,957	2.07%
2021	\$38,938,557	28.09%
2022	\$36,684,763	-6.00%

Endowment Assets



Data Source: Percent Change Calculator and MSU Schedule of Development Foundation and MSU Gift Investments*Data Reporting Changed 2013 from previous Factbook Collections. Prior years collected data as of September 30th. Data is now reported as of June 30th by the MSU Business Office to the Integrated Postsecondary Education Data System (IPEDS). Endowment Assets: Gross investments of endowment funds, term endowment funds, and funds functioning as endowment for the institution and any of its foundation and other affiliated organizations (IPEDS).

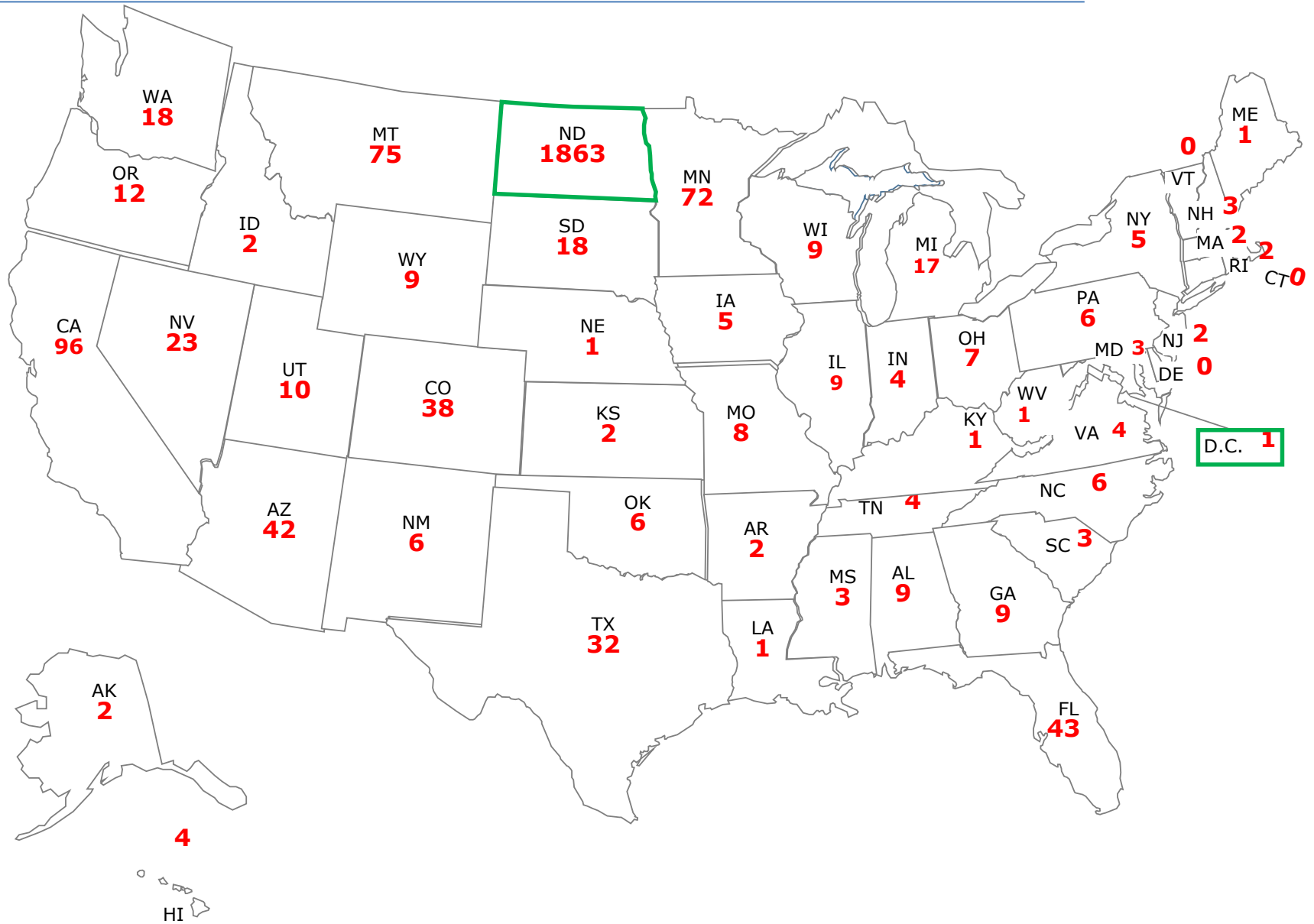
Enrolled by State of Origin

State	2010	2011	2012	2013	2014	2015	2016	2017	2018	2019	2020	2021	2022	2023
AK	5	7	5	4	2	8	2	4	5	7	5	3	2	2
AL	1	2	1	2	1	2	2	3	2	1	2	1	3	9
AR	2	2	2	1	1	3	1	4	2	3	2	1	2	2
AZ	15	12	12	16	16	16	23	28	34	37	40	52	52	42
CA	55	53	75	89	99	107	108	122	109	99	100	82	80	96
CO	12	7	7	12	14	10	10	12	19	20	34	39	42	38
CT	2	0	2	3	2	1	1	2	0	1	0	0	0	0
D.C.	0	1	0	0	0	0	1	0	0	0	1	0	1	0
DE	1	0	3	4	2	2	1	0	0	0	0	0	0	1
FL	31	30	41	41	37	50	43	36	24	29	25	32	30	43
GA	4	5	6	4	9	3	5	8	6	9	9	4	9	9
HI	2	1	1	1	1	5	4	4	6	9	11	9	9	4
IA	4	6	4	4	6	11	1	4	6	9	12	7	5	5
ID	4	4	1	2	3	5	6	9	10	9	6	5	2	4
IL	16	14	12	20	15	24	18	21	16	16	18	12	10	9
IN	2	2	4	0	4	6	5	5	5	5	5	4	3	4
KS	4	2	3	2	3	5	3	4	3	6	5	2	1	2
KY	2	4	2	0	0	1	0	1	0	0	1	2	2	1
LA	9	4	2	1	3	0	2	2	2	3	4	0	1	1
MA	4	2	4	3	5	3	1	0	2	0	2	0	1	2
MD	4	2	4	3	6	11	8	9	8	6	9	4	8	3
ME	2	0	1	4	4	4	3	2	1	0	0	0	0	1
MI	12	11	10	13	9	13	9	12	10	10	23	20	16	17
MN	50	57	82	87	87	78	75	75	86	87	88	76	81	72
MO	7	6	4	7	6	4	4	6	7	9	6	8	6	8
MS	1	1	2	1	1	0	2	1	1	1	0	0	1	3
MT	99	107	93	92	86	67	42	59	70	88	88	77	72	75
NC	4	7	11	13	13	8	5	7	4	6	4	3	4	6
ND	2970	2859	2730	2647	2483	2397	2328	2323	2306	2231	2007	1948	1916	1863

Continued on next page

NE	6	4	2	5	5	9	7	3	2	8	8	5	1	1
NH	1	1	0	1	1	3	3	5	5	4	4	2	2	3
NJ	5	2	1	2	2	5	3	4	12	7	3	2	2	0
NM	3	1	1	1	3	2	4	3	6	3	4	1	3	6
NV	4	6	6	8	5	5	5	7	9	8	13	19	18	23
NY	3	4	13	11	9	6	6	5	1	4	5	1	2	5
OH	7	5	8	5	10	9	10	9	9	5	5	3	5	7
OK	8	2	0	3	3	1	2	2	2	2	1	2	3	6
OR	8	6	6	9	12	13	18	17	10	8	6	11	8	12
PA	6	5	8	7	6	8	5	7	3	8	7	10	8	6
RI	1	0	0	1	1	0	0	0	2	1	1	1	2	0
SC	1	4	2	3	7	4	1	3	4	3	3	3	2	3
SD	14	8	11	11	8	8	10	12	11	12	19	22	21	18
TN	4	4	3	3	4	4	3	2	2	2	1	5	2	4
TX	35	20	14	14	24	25	25	23	19	17	16	14	20	32
UT	6	2	6	4	14	9	6	7	9	1	2	7	9	10
VA	8	5	7	8	7	11	7	9	12	7	4	4	3	4
VT	0	0	0	0	0	0	0	0	0	0	1	1	0	0
WA	22	20	17	26	28	30	30	31	20	12	14	19	21	18
WI	12	8	6	8	13	13	10	15	14	13	15	10	9	9
WV	5	5	5	5	4	2	1	1	1	1	1	1	1	0
WY	10	1	5	6	6	6	4	12	11	15	19	16	11	9
P Rico	0	0	0	0	2	2	1	0	0	0	0	0	0	0
*AE	5	4	2	0	3	4	1	1	6	0	1	5	2	2
Virgin Islands	0	0	0	0	0	0	0	0	0	0	0	1	0	0
US Enrolled Total	3498	3325	3247	3217	3095	3023	2875	2941	2914	2842	2660	2556	2514	2500
Out of State	528	466	517	570	612	626	547	618	608	611	653	608	598	637

Source: NDUH 2SRG-Official Enrollment Report (4th Week data)

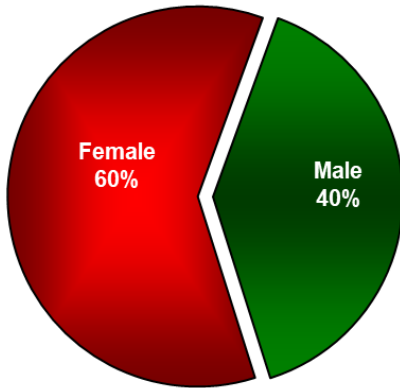


Enrollment by Gender

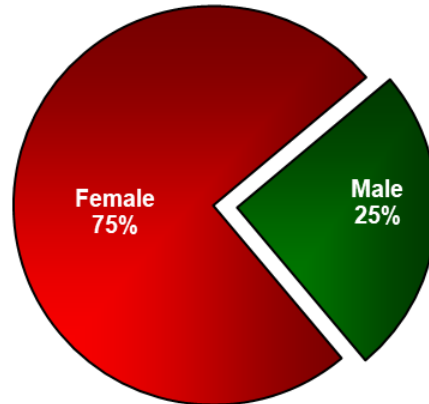
Full-time - Enrolled in 12-24 Semester Hours

Part-time-Enrolled in 1-11 Semester Hours

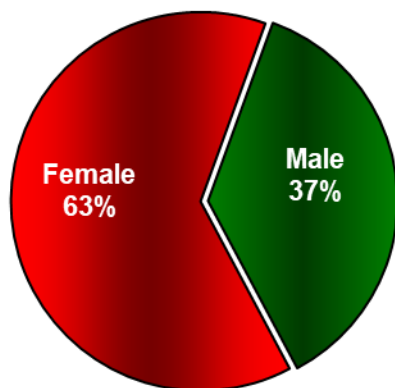
Undergraduate FT Enrollment



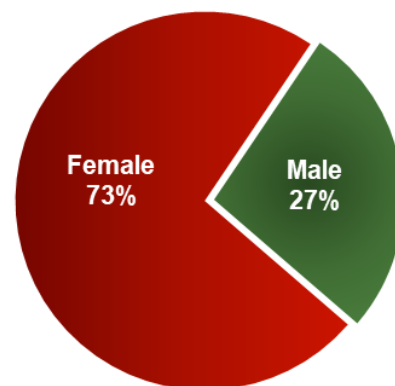
Graduate FT Enrollment



Undergraduate PT Enrollment



Graduate PT Enrollment



Source: NDUHSRA- Headcounts and FTE Enrollments Pg. 5 Institution Totals- Registrar's Office 4th Week Official Enrollment Report

Fall Enrollment Headcount

	2010	2011	2012	2013	2014	2015	2016	2017	2018	2019	2020	2021	2022	2023	%Chg
Undergraduates	3551	3367	3298	3254	3116	3064	3136	2956	2915	2832	2656	2576	2530	2474	-2.2%
Graduates	315	290	262	279	294	284	276	260	274	289	264	260	247	267	8.1%
Total Enrollment	3866	3657	3560	3533	3410	3348	3412	3216	3189	3121	2920	2836	2777	2741	-1.3%
Undergraduate Students															
Male Full-time	907	839	840	788	775	760	780	774	772	754	697	701	650	681	4.8%
Female Full-time	1539	1416	1338	1363	1300	1261	1241	1178	1207	1167	1139	1139	1118	1040	-7.0%
Male Part-Time	461	490	438	466	460	430	472	416	384	355	311	236	257	276	7.4%
Female Part Time	644	622	682	637	581	613	643	588	552	556	509	500	505	477	-5.5%
Unknown	0	0	0	0	0	0	0	0	0	0	0	0	0		
Graduate Students															
Male Full-time	26	23	23	38	35	32	37	32	29	26	29	35	32	30	-6.3%
Female Full-time	85	78	78	84	81	75	74	78	85	79	83	86	82	92	12.2%
Male Part Time	41	44	54	52	72	69	56	58	64	72	49	34	34	39	14.7%
Female Part Time	163	145	107	105	106	108	109	92	96	112	103	105	99	106	7.1%

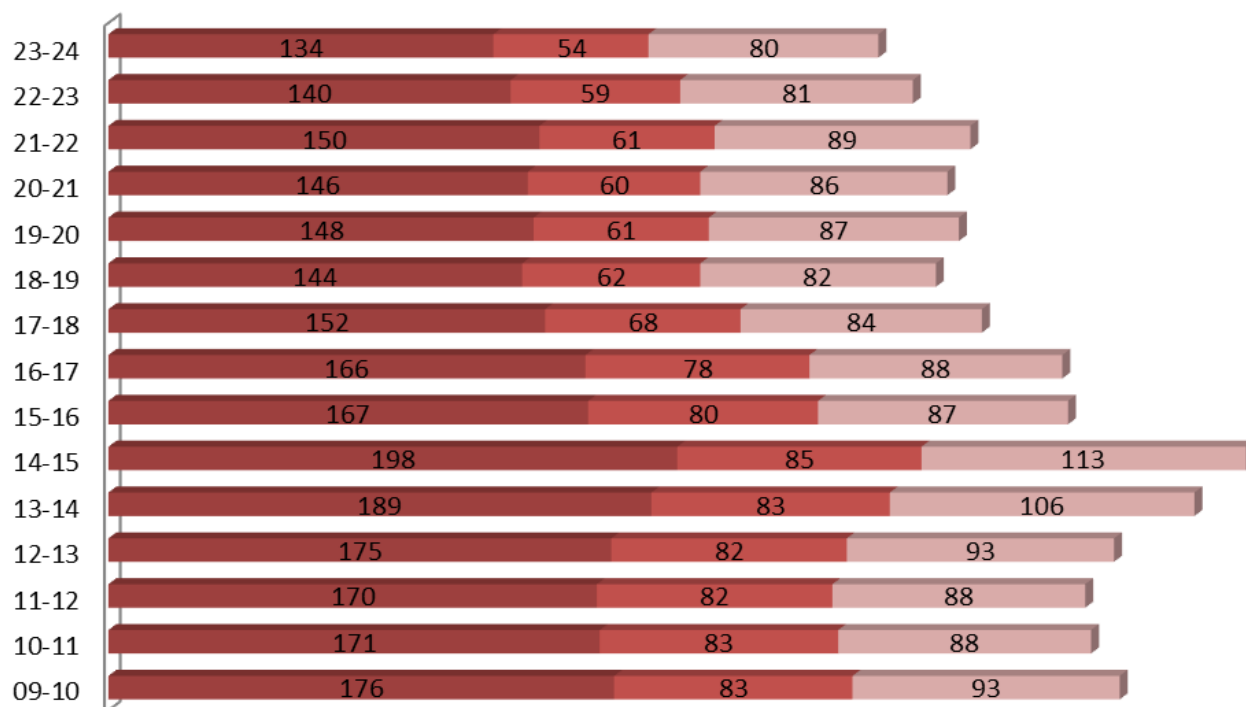
Data Source: NDUHSRA- Headcounts and FTE Enrollments Pg. 5 Institution Totals.-Data provided by Registrar's Office 4th Week Official Enrollment Data – September 2011.
Headcount indicates all students enrolled regardless of the number of credit hours for which they are enrolled (NDUS) * Includes two classified as unknown (1 full-time and 1 part time)
Percentage Change= Subtract old value from the new value, then divide by the old value, multiply by 100 for percentage. $\frac{\text{New Value}-\text{Old Value}}{\text{Old Value}} \times 100 = \text{Percentage Change}$
(<http://www.csgnetwork.com/percentchangepcalc.html>)

Total FT Faculty Status and Gender Distributions

	09-10	10-11	11-12	12-13	13-14	14-15	15-16	16-17	17-18	18-19	19-20	20-21	21-22	22-23	23-24
Full-time	176	171	170	175	189	198	167	166	152	144	148	146	150	140	134
Male	83	83	82	82	83	85	80	78	68	62	61	60	61	59	54
Female	93	88	88	93	106	113	87	88	84	82	87	86	89	81	80

Total Full-Time Faculty Status and Gender

■ Full-time ■ Male ■ Female



Data Source: Human Resources as reported to IPEDS

New First-year Student Applications and Enrollment Patterns

	2011	2012	2013	2014	2015	2016	2017	2018	2019	2020	2021	2022	2023
Applied	659	540	597	508	571	617	569	632	694	627	547	498	549
Enrolled	460	396	397	341	347	357	373	397	399	396	374	378	365
Denied	3	4	43	46	65	75	60	114	101	43	19	34	34
% Enrolled	69.80%	73.33%	66.50%	67.13%	60.77%	57.86%	65.55%	62.82%	57.49%	63.16%	68.37%	75.90%	66.48%
Completed apps-Excludes applicants that do not complete application process, withdrawn applications and revoked applications.													

Data Source: Admission Summary Data Report. Only includes completed applications.

Retention of First-year Students

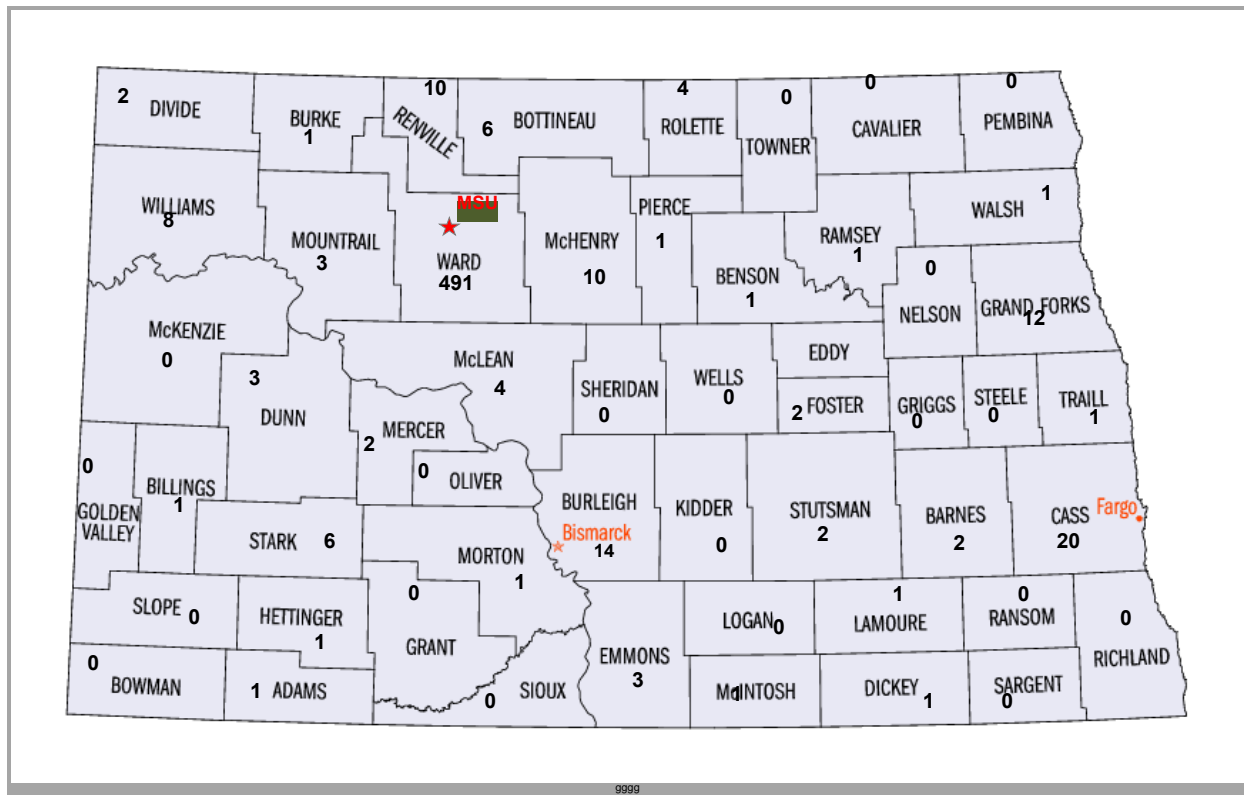
Fall Term	6 Year Graduation Rate
2002	33%
2003	34%
2004	32%
2005	29%
2006	27%
2007	31%
2008	30%
2009	31%
2010	39%
2011	34%
2012	34%
2013	37%
2014	40%
2015	42%
2016	43%
2017	37%
2018	46%
2019	45%
2020	55%
2021	46%
2022	45%
2023	44%

Freshman * by North Dakota County

	2010	2011	2012	2013	2014	2015	2016	2017	2018	2019	2020	2021	2022	2023
No County	0	0	1	0	0	0	0	0	0	0	0	0	0	0
Adams	0	0	0	0	0	0	0	0	0	0	0	1	2	1
Barnes	0	1	2	0	1	0	0	1	0	2	1	1	0	2
Benson	1	0	0	4	2	0	3	2	0	2	1	1	1	1
Billings	0	0	0	0	0	0	0	0	0	0	0	0	0	1
Bottineau	17	13	11	14	5	6	5	6	9	4	5	6	7	6
Bowman	0	0	3	0	1	0	2	0	0	0	0	0	2	0
Burke	2	8	10	5	3	6	6	2	4	6	4	3	4	1
Burleigh	22	18	16	17	12	9	13	18	13	12	12	9	10	14
Cass	6	8	14	18	17	26	19	18	26	29	29	25	25	20
Cavalier	2	1	1	1	0	1	1	0	1	0	2	3	0	0
Dickey	2	0	0	1	2	1	0	2	1	2	1	1	1	1
Divide	1	3	1	1	0	1	2	3	1	1	0	1	4	2
Dunn	1	0	2	0	0	0	1	0	2	0	0	1	1	3
Eddy	1	0	1	1	0	0	0	0	0	0	0	0	0	0
Emmons	0	1	2	3	0	1	1	1	0	0	0	2	0	3
Foster	0	1	0	1	1	1	0	1	0	1	1	0	2	2
Golden Valley	0	0	0	1	0	0	0	3	0	0	0	1	1	0
Grand Forks	6	4	5	5	2	5	2	1	4	5	5	6	1	12
Grant	1	0	1	0	0	0	1	0	0	0	0	0	0	0
Griggs	1	0	0	0	0	0	0	0	0	0	0	0	0	0
Hettinger	1	0	4	1	0	1	0	0	1	0	0	0	1	0
Kidder	5	0	0	0	1	1	1	0	0	0	0	0	0	0
LaMoure	0	1	0	0	0	0	0	0	0	1	1	0	0	1
Logan	0	0	0	1	1	0	1	0	0	0	1	0	1	0
McHenry	30	41	33	24	16	12	13	15	17	11	8	11	20	10
McIntosh	0	0	0	0	0	1	1	1	1	0	0	0	0	1
McKenzie	2	7	2	1	2	3	4	3	0	0	2	5	4	0
McLean	13	6	6	9	9	8	5	5	4	6	5	6	7	4
Mercer	7	9	2	2	1	1	2	4	1	6	2	3	7	2
Morton	7	7	6	7	8	7	4	7	5	5	2	4	7	1
Mountrail	10	15	9	16	2	12	12	9	4	15	5	3	9	3
Nelson	1	0	0	1	0	0	0	0	0	0	0	1	0	0
Oliver	0	0	0	0	0	0	0	0	0	0	0	1	2	0
Pembina	0	0	2	1	3	2	1	0	0	0	0	3	0	0

Continued on next page

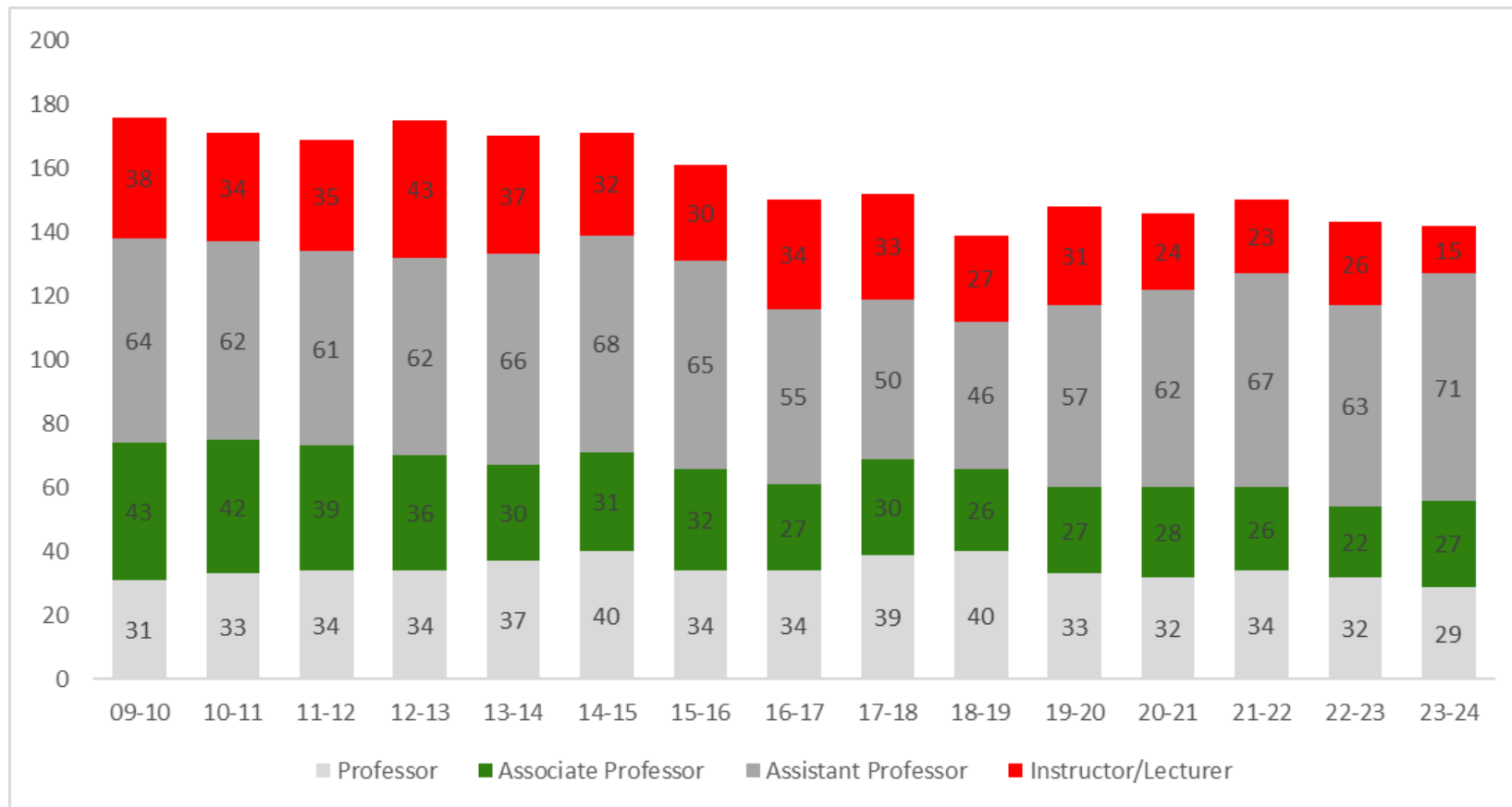
Pierce	6	7	2	5	1	1	2	5	2	9	3	3	3	1
Ramsey	4	0	3	5	1	2	6	1	1	2	0	2	3	1
Ransom	0	0	1	0	0	0	0	0	0	0	0	0	0	0
Renville	16	10	16	7	13	8	17	13	10	11	9	8	9	10
Richland	0	1	0	2	2	2	0	0	0	0	2	1	0	0
Rolette	8	7	3	3	3	2	4	1	5	9	2	3	2	4
Sargent	1	0	1	0	0	0	0	0	0	0	0	1	1	0
Sheridan	2	1	0	1	0	0	0	1	0	0	1	0	2	0
Sioux	3	0	0	0	1	1	0	0	0	0	0	0	0	0
Slope	0	0	0	0	0	0	0	0	0	0	0	0	0	0
Stark	4	1	2	2	8	4	5	7	4	6	3	2	3	6
Steele	0	0	0	0	0	0	0	0	1	1	1	0	0	0
Stutsman	1	4	2	4	1	1	2	3	3	2	4	1	1	2
Towner	1	1	2	3	0	0	2	0	0	0	0	1	0	0
Traill	2	0	0	0	1	0	0	0	1	1	0	0	1	1
Walsh	0	0	2	1	0	2	1	1	1	2	2	3	1	1
Ward	753	736	691	698	669	614	678	645	638	574	489	458	482	491
Wells	8	4	3	1	1	0	1	3	4	3	2	2	0	0
Williams	11	11	10	18	8	5	7	3	4	5	7	18	13	8
Total ND	959	927	872	885	798	747	825	785	768	733	612	601	640	616



Data Source: NDUH2SRG- Official Enrollment Report (4th Week Data)* Freshman students are defined as any first-time students and any other student who has not yet obtained sufficient credits to advance to sophomore standing.

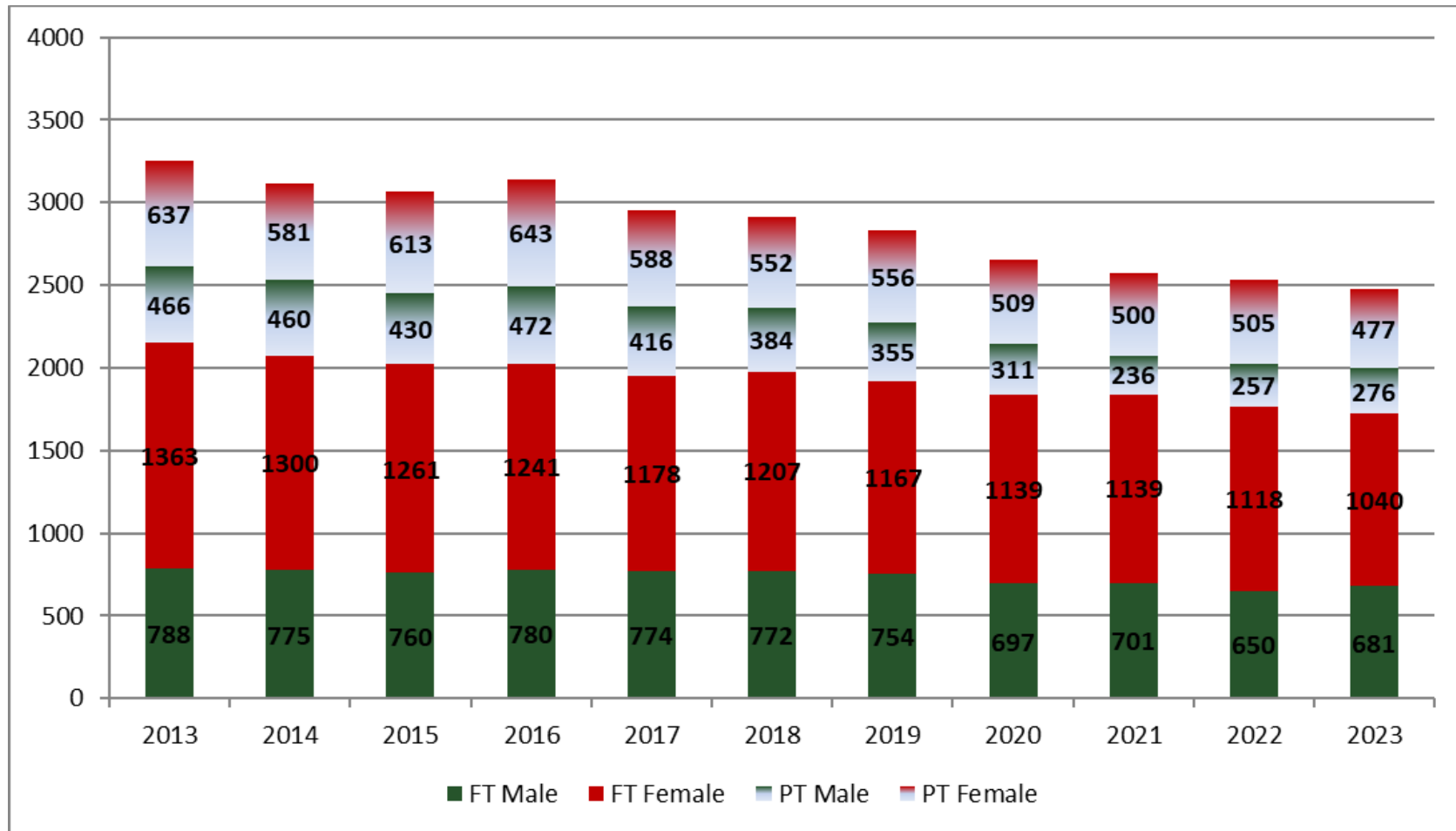
Full-time Faculty Rank and Gender Distribution

	09-10	10-11	11-12	12-13	13-14	14-15	15-16	16-17	17-18	18-19	19-20	20-21	21-22	22-23	23-24
Professor	31	33	34	34	37	40	34	34	39	36	33	32	34	32	29
Male	25	27	28	27	27	27	22	22	25	22	18	18	19	16	16
Female	6	6	6	7	10	13	12	12	14	14	15	14	15	16	13
Associate Professor	43	42	39	36	30	31	32	27	30	27	27	28	26	22	27
Male	23	21	18	18	13	13	15	13	13	13	13	14	13	9	14
Female	20	21	21	18	17	18	17	14	17	14	14	14	13	13	13
Assistant Professor	64	62	61	62	66	68	65	55	50	50	57	62	67	63	71
Male	22	25	27	28	32	36	36	30	24	22	22	24	23	22	22
Female	42	37	34	34	34	32	29	25	26	28	35	38	44	41	49
Instructor/Lecturer	38	34	35	43	37	32	30	34	33	36	31	24	23	26	15
Male	13	10	10	9	9	8	5	6	25	7	8	4	6	8	4
Female	25	24	25	34	28	24	25	28	14	29	23	20	17	18	11
No Academic Rank			13	17	19	27	32	42							
Male	n/a	n/a	1	1	2	1	15**	15							
Female	n/a	n/a	12	16	17	26*	19	27							
Total	176	171	182	192	189	198	193	192	152	149	148	146	150	143	142



Data Source: Human Resources as reported to IPEDS (Tenured, non-tenured, on-track).

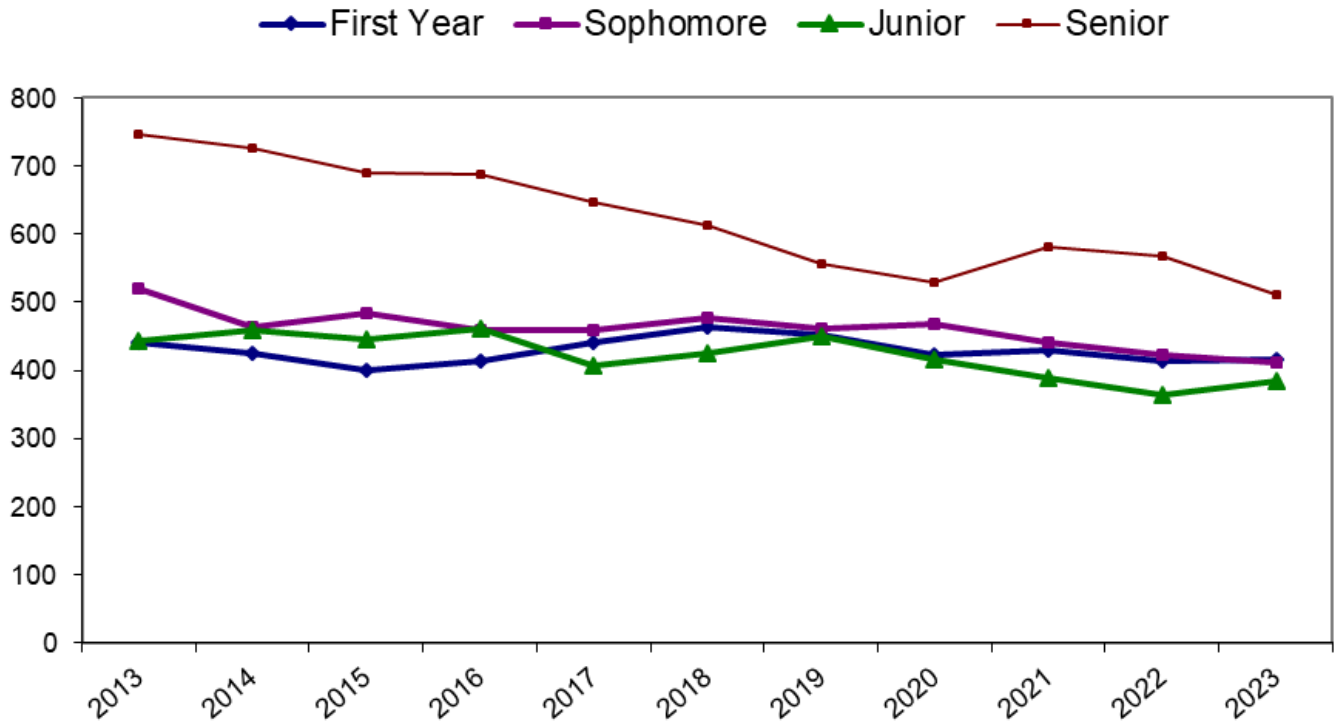
Enrollments by Gender and Enrollment Status Undergraduates



Source: NDUHSRA- Headcounts and FTE Enrollments Pg. 5 Institution Totals (4th Week Data)

MSU Full-time Undergraduates by Status

Total Full-Time Students



Source: NDUHSRA- Headcounts and FTE Enrollments Pg. 5 Institution Totals (4th Week Data). Undergraduate Special (UG Special) refers to an individual who has previously earned a bachelor's degree and is taking additional undergraduate coursework. PeopleSoft includes these students in Senior Status.

Graduate Degrees Conferred

CIP	Program	2013	2014	2015	2016	2017	2018	2019	2020	2021	2022	2023
5.021	Disability Human Services (MS)	0	0	0	0	0	0	0	0	0	3	1
51.0201	Communication Disorders (MS)	24	27	25	22	17	20	33	28	27	23	26
13.0101	Education (MED) New 2001-02	18	14	9	12	16	13	13	17	23	15	16
13.1202	Elementary Education (MS)	0	0	0	0	0	0	0	0	0	0	0
52.1201	Information Systems (MS) New 2003-04	21	32	34	36	34	24	17	23	21	8	12
52.0201	Management (MS)	20	21	20	16	32	42	24	15	14	14	10
13.1311	Mathematics Education (MAT)	9	5	6	21	0	0	0	0	0	0	0
13.1312	Music Education (MME)	2	2	0	0	1	3	2	1	0	0	0
42.2805	School Psychology (EDSPEC)	3	3	3	8	8	7	5	2	1	0	2
13.1316	Science Education (MAT)	2	1	1	0	4	1	2	1	0	0	0
13.1001	Special Education (MS)	22	20	12	15	9	12	9	12	10	14	15
31.0504	Sports Management (MA) New 2017					2	13	13	12	17	14	16
	Totals	121	125	110	130	123	136	118	111	113	91	98

Data Sources: Graduation data for first majors is from the annual publication “North Dakota University System: Programs Offered/Completed at North Dakota Institutions of Postsecondary Education.” This report provides information on degree and certificate programs offered and student program completions for the fiscal year in North Dakota's public and private postsecondary educational institutions.

Grants and Contracts

Fiscal Year	Private	State	Federal	Federal Stimulus	Total
2003-04	(\$420,778)	\$437,636	\$7,828,760		\$7,845,618
2004-05	\$218,771	\$584,798	\$8,437,742		\$9,241,311
2005-06	\$29,767	\$726,121	\$7,275,993		\$8,031,881
2006-07	\$93,231	\$1,243,051	\$8,542,804		\$9,879,086
2007-08	\$75,468	\$929,208	\$8,007,051		\$9,011,727
2008-09	\$54,980	\$851,984	\$5,522,708		\$6,429,672
2009-10	\$53,271	\$1,612,607	\$6,924,802		\$8,590,680
2010-11	\$66,715	\$997,826	\$7,107,570		\$8,172,111
2011-12	\$501,149	\$1,377,650	\$6,848,676		\$8,727,475
2012-13	\$333,594	\$13,852,889	\$5,671,745		\$7,388,228
2013-14	\$320,129	\$1,502,916	\$5,326,629		\$7,149,674
2014-15	\$294,588	\$1,415,213	\$4,790,157		\$6,499,958
2015-16	\$381,477	\$1,477,826	\$4,374,818		\$6,234,121
2016-17	\$444,286	\$1,620,330	\$4,153,463		\$6,218,079
2017-18	\$334,433	\$1,588,229	\$4,020,418		\$5,943,080
2018-19	\$375,022	\$1,937,550	\$3,589,861		\$5,902,433
2019-20	\$308,613	\$2,404,481	\$3,082,829	\$963,495	\$5,795,923
2020-21	\$299,698	\$2,159,506	\$3,018,519	\$4,362,986	\$9,840,709
2021-22	\$331,991	\$2,155,683	\$4,425,772	\$6,158,570	\$13,072,016
2022-23	\$473,801	\$2,174,599	\$5,878,093	\$12,678,938	\$21,205,431

Data Source: Assistant Vice President, Business Services Controller

Headcount (HC) and Full-time Equivalent (FTE)

Year	Headcount	% Change	FTE	% Change
2003	3825	5.5	2839.00	1.8
2004	3851	0.7	2844.00	0.2
2005	3798	-0.8	2884.00	1.4
2006	3712	-2.3	2928.00	n/a
New FTE formula initiated in 2006				
2007	3424	-7.80%	2730.00	-6.80%
2008	3432	0.23%	2720.46	-0.30%
2009	3649	6.30%	2831.82	4.09%
2010	3866	5.90%	3002.15	6.01%
2011	3657	-5.40%	2794.60	-6.90%
2012	3560	-2.65%	2730.71	-2.28%
2013	3533	-0.76%	2710.12	-0.75%
2014	3410	-3.48%	2600.28	-4.05%
2015	3348	-1.82%	2570.43	-1.15%
2016	3412	1.91%	2591.96	0.84%
2017	3216	-5.74%	2467.38	-4.81%
2018	3189	-0.84%	2482.86	0.63%
2019	3121	-2.13%	2399.31	-3.37%
2020	2920	-6.44%	2273.08	-5.26%
2021	2836	-2.88%	2241.55	-1.39%
2022	2777	-2.08%	2166.71	-3.34%
2023	2741	-1.30%	2134.40	-1.49%

Graduate and Undergraduate Combined

Data Source: NDUHSRA- Headcounts and FTE Enrollments Pg. 5 Institution Totals (4th Week Data)

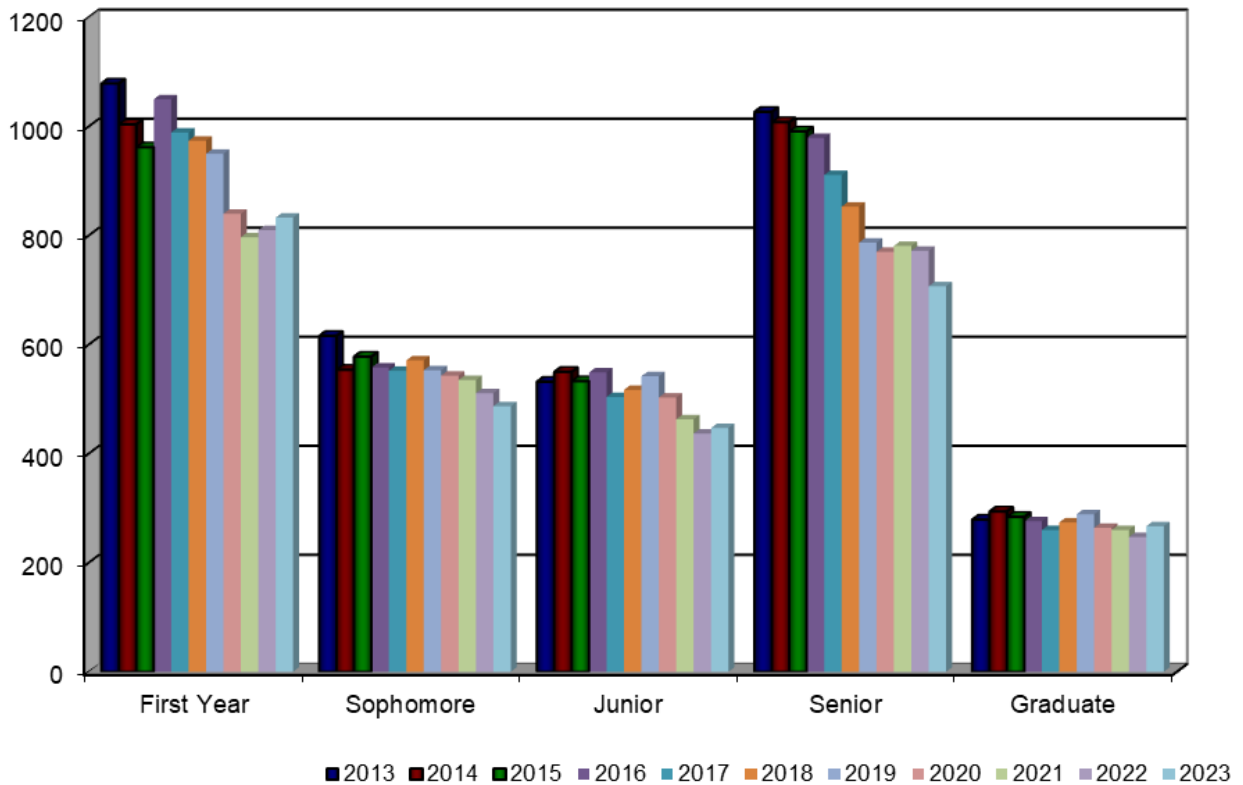
Headcount indicates all students enrolled regardless of the number of credit hours for which they are enrolled (NDUS)

Percentage Change= <http://www.csgnetwork.com/percentchange.html>

Headcount Enrollment by Classification

	2009	2010	2011	2012	2013	2014	2015	2016	2017	2018	2019	2020	2021	2022	2023
First Year	1095	1152	1125	1095	1079	1004	962	1050	989	974	950	840	797	810	833
Sophomore	659	720	630	610	616	554	578	558	552	571	553	543	535	511	487
Junior	579	575	563	532	532	550	533	549	504	517	542	503	463	437	447
Senior	1012	1104	1049	1061	1027	1008	991	979	911	853	787	770	781	772	707
Graduate	304	315	290	262	279	294	284	276	260	274	289	264	260	247	267

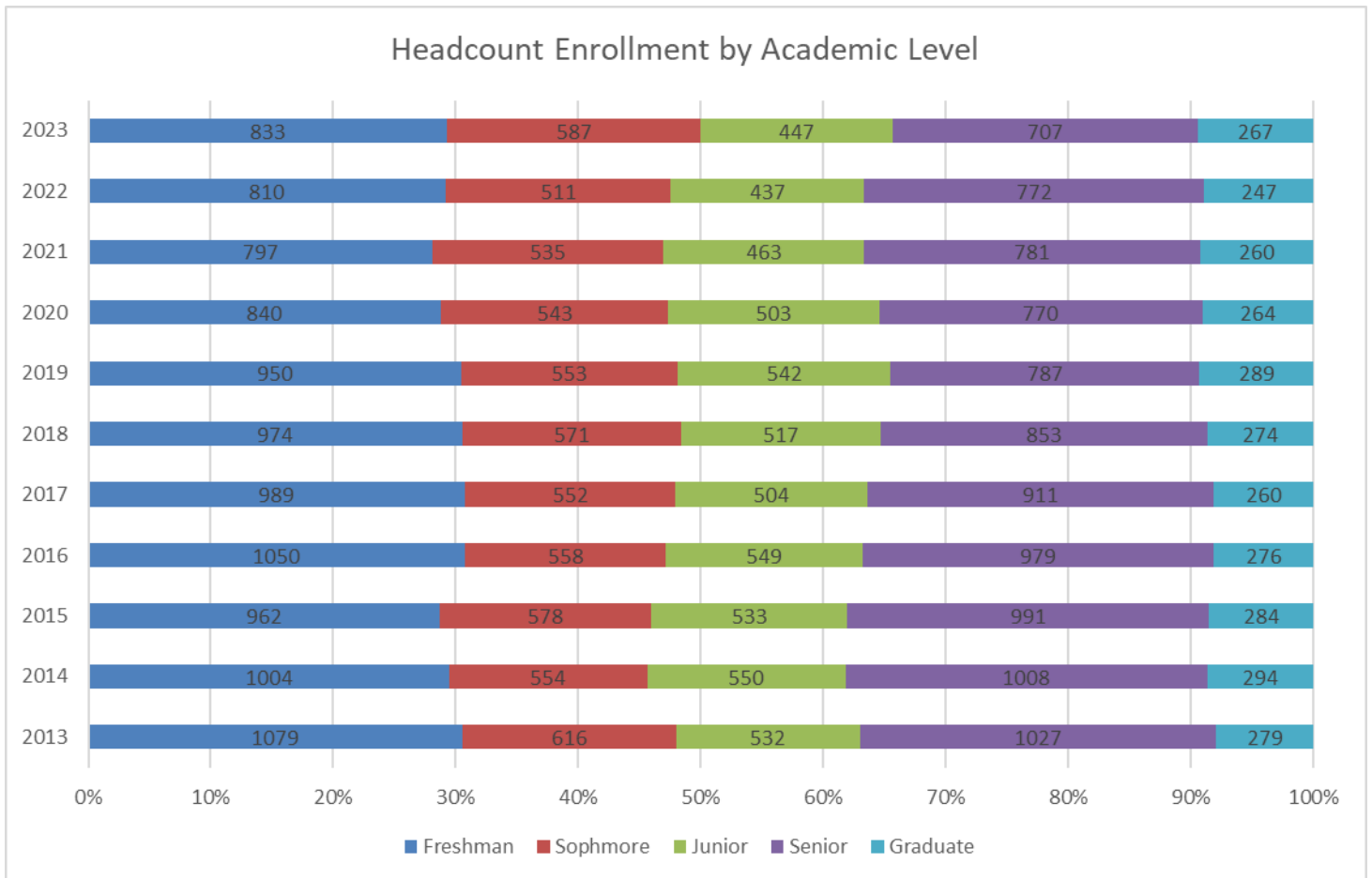
Total Students by Academic Status



Source: Enrollment Report NDUH2SRA, Page 5 (4th Week Data)

Headcount Enrollment by Level

Headcounts include all students enrolled (FT and PT)



Source: NDUHSRA- Headcounts and FTE Enrollments Pg. 5 Institution Totals- (4th Week Data). Undergraduate Special (UG Special) refers to an individual who has previously earned a bachelor's degree and is taking additional undergraduate coursework. PeopleSoft includes these students in Senior Status.

International Student Fall Enrollment



Source: Enrollment Report-NDUH2SRD (4th Week Data) - Based on Residency

Circulation of Library Materials

	2008-09	2009-10	2010-11	2011-12	2012-13	2013-14	2014-15	2015-16	2016-17	2017-18	2018-19	2019-20	2020-21	2021-2022	2022-2023
Number	20,246*	19,489	17,380	15,881	13,030	12,774	12,088	11,031	9,546	8,954	6,561	46,467	53,484	45,133	52,791
% Chg	7.0	-3.7	-10.8	-8.6	-17.9	-2.0	-5.3	-8.7	-13.4	-6.2	-26.7	608.23%	15.10%	-15.61%	16.97%

Circulation of Material by User Class

User	2008-09	2009-10	2010-11	2011-12	2012-13	2013-14	2014-15	2015-16	2016-17	2017-18	2018-19	2019-20	2020-21	2021-2022	2022-2023
Students	12,641	12,714	10,506	10,389	7,779	8,084	7,899	6,702	5,487	5,009	4,798	29,374	36,970	34,728	38,140
Faculty	5,024	5,007	4,564	3,675	3,716	3,366	2,764	3,189	2,989	3,192	1,277	16,497	15,980	9,791	14,106
Local Patron	759*	969	896	476	369	204	456	411	249	102	192	38	106	134	68
Interlibrary Loan	790*	799	1,414	1,341	1116	1120	969	729	821	651	294	558	428	480	477

Data Source: MSU Library Director

Note: 2020 article downloads were added (from our article databases) to the circulation figures.
An article download is the equivalent of checking out a print article, including these transactions as part of an accurate circulation figure.

Library Holdings

Item	2008	2009	2010	2011	2012	2013	2014	2015	2016	2017	2018	2019	2020	2021	2022	2023
Books	188,158	190,215	191,384	193,354	194,717	195,791	194,235	194,731	185,220	183,652	180,151	180,600	181,542	180,268	180,905	186,430
Periodicals	42,126	42,402	43,092	39,593	39,768	39,913	40,851	43,139	44,817	31,264	52,482	52,910	53,366	53,009	53,854	67,273
Documents	181,113	182,744	180,200	185,765	197,286	207,424	215,752	224,672	224,653	224,641	225,895	226,475	226,392	226,570	226,770	226,821
Microfilm	11,657	11,642	11,642	11,642	11,642	11,642	11,642	11,642	11,642	11,642	10,385	10,402	10,415	10,420	10,425	10,430
Microfiche	711,859	625,820	632,314	638,896	644,663	644,663	644,663	644,663	644,663	644,663	644,663	644,663	644,633	644,633	644,683	644,899
Subscriptions*	532	520	530	520	520	520	500	500	500	130	2,751	2,748	2,791	2,785	2,785	2,788
Maps	124,519	124,626	124,800	125,000	n/a	n/a	125,272	125,485	125,489	125,415	125,485	25,000	25,000	25,000	25,000	25,000
Non-Print Materials	16,335	16,997***	17,375	17,514	17,811	17,950					9,425	9,883	8,273	8,273	7,732	10,811

Data Source: ~MSU Library *Current journals, serial and newspaper subscriptions

***Non-print materials include disc recordings, cassettes, videotapes, software, compact disks, DVD, curriculum materials and miscellaneous items

Library-use Figures

Year	2008-09	2009-10	2010-11	2011-12	2012-13	2013-14	2014-15	2015-16	2016-17	2017-18	2018-19	2019-20	2020-21	2021-2022	2022-2023
Materials Provided by Other Institutions	4,193	3,209	4,966	3,396	3,111	2,939	3,700	3,482	3,541	2,613	2,711	1,889	1,565	1,853	1,366
Materials Requested by Other Institutions	4,450	2,614	2,282	2,858	1,917	2,239	1,963	1,701	1,854	1,919	2,328	1,686	1,282	1,116	823

Data Source: MSU Library Director

Minot State University Enrollment Highlights

Fall Enrollment

Headcount				Full-Time			Part-Time			Total Scheduled Cr Hr		
	2023	2022	Change	2023	2022	Change	2023	2022	Change	2023	2022	Change
Freshmen												
Male	375	310	65	199	166	33	176	144	32	3638	3083	555
Female	458	500	-42	216	247	-31	242	253	-11	4380	4849	-469
Total	833	810	23	415	413	2	418	397	21	8017	7932	85
Sophomore												
Male	175	193	-18	165	173	-8	10	20	-10	2463	2637	-174
Female	312	318	-6	246	250	-4	66	68	-2	4008	4039	-31
Total	487	511	-24	411	423	-12	76	88	-12	6471	6675	-204
Junior												
Male	169	155	14	147	134	13	22	21	1	2343	2116	227
Female	278	282	-4	237	230	7	41	52	-11	3761	3717	44
Total	447	437	10	384	364	20	63	73	-10	6104	5834	270
Senior												
Male	238	249	-11	170	177	-7	68	72	-4	2927	3006	-79
Female	469	523	-54	341	391	-50	128	132	-4	5751	6461	-710
Total	707	772	-65	511	568	-57	196	204	-8	8678	9467	-789
TOTAL UNDERGRADUATES												
Male	957	907	50	681	650	31	276	257	19	11371	10842	529
Female	1517	1623	-106	1040	1118	-78	477	505	-28	17900	19066	-1166
Total	2474	2530	-56	1721	1768	-47	753	762	-9	29271	29908	-637
TOTAL GRADUATES												
Male	69	66	3	30	32	-2	39	34	5	516	513	3
Female	198	181	17	92	82	10	106	99	7	1692	1561	131
Total	267	247	20	122	114	8	145	133	12	2208	2074	134
MINOT STATE UNIVERSITY TOTAL												
Male	1026	973	53	711	682	29	315	291	24	11887	11355	532
Female	1715	1804	-89	1132	1200	-68	583	604	-21	19592	20627	-1035
Total	2741	2777	-36	1843	1882	-39	898	895	3	31479	31982	-503

Registrar's Office: Enrollment Report ID# NDUH2SRA pg 5 (4th Week Data)

* FTE/Total refers to full-time equivalent of total credit hour production (Total undergraduate credit hours divided by 16 or Total graduate credit hours divided by 12). "Total credit hours" is the number of credit hours the full-time and part-time students enrolled in.

<http://www.csgnetwork.com/percentchange.html> FTE numbers were calculated by dividing total credit hours from first table by 15 for undergraduates and by 12 for graduates. Prior to 2006, the calculation was 16 for undergraduates and 9 graduates



MSU Development Foundation

Board of Directors

Executive Director -----	Rick Hedberg
President -----	Jon Backes
Vice President-----	Dan Langemo
Treasurer-----	TBD
Investment Advisory Committee-----	Dan Langemo
Special Gifts Committee -----	Robert Sando
Development Strategies Committee -----	Karen Krebsbach
Nominating Committee-----	Kathy Aas
MSU President-----	Steve Shirley

MEMBERS

Kathy Aas	Ex-Officio
Jon Backes	Rick Hedberg
David Gowan	Steve Shirley
Karen Krebsbach	Tom Rafferty, Board of Regents Chair
Jarid Lundeen	Jaimie Brunner
Leslie Coughlin	
Tom Probst	
Robert Sando	
Myron Thompson	
Kent Kirkhammer	
Dan Langemo	

North Dakota University System Fall Enrollment by Headcount

Institution	2006	2007	2008	2009	2010	2011	2012	2013	2014	2015	2016	2017	2018	2019	2020	2021	2022	2023
Bismarck State College	3,477	3,591	3,788	4,020	4,177	4,392	4,109	4,062	4,002	4,078	3,976	3,756	3,778	3,739	3,716	3,549	3,771	4065
Dickinson State University	2,572	2,670	2,730	2,767	2,688	2,346	1,837	1,449	1,479	1,317	1,386	1,425	1,392	1,350	1,441	1,415	1,473	1,453
Lake Region State College	1,508	1,520	1,657	1,702	1,913	2,056	1,974	1,898	1,988	1,918	1,947	1,972	2,072	1,982	1,771	1,621	1,679	1,810
Mayville State University	832	769	789	887	982	970	1,020	1,065	1,081	1,110	1,130	1,140	1,184	1,212	1,168	1,172	1,123	1,048
Dakota College at Bottineau	605	637	655	748	863	812	774	793	753	692	811	909	996	1,006	1,060	1,162	1,080	1,180
<i>Minot State University</i>	<i>3,712</i>	<i>3,424</i>	<i>3,432</i>	<i>3,649</i>	<i>3,866</i>	<i>3,657</i>	<i>3,560</i>	<i>3,533</i>	<i>3,410</i>	<i>3,348</i>	<i>3,412</i>	<i>3,216</i>	<i>3,189</i>	<i>3,121</i>	<i>2,920</i>	<i>2,836</i>	<i>2,777</i>	<i>2,741</i>
ND State College Of Science	2,490	2,417	2,545	2,651	2,833	3,127	3,066	3,168	3,033	3,123	3,003	2,985	2,957	2,977	2,829	2,802	2,942	3,140
North Dakota State University	12,258	12,527	13,229	14,189	14,407	14,399	14,443	14,629	14,747	14,516	14,432	14,358	13,796	13,173	12,846	12,461	12,242	11,952
University of North Dakota	12,834	12,559	12,748	13,172	14,194	14,697	15,250	15,143	14,906	14,951	14,648	14,406	13,847	13,581	13,615	13,772	13,876	14,172
Valley City State University	1,037	982	1,019	1,083	1,285	1,384	1,362	1,366	1,378	1,422	1,452	1,522	1,547	1,665	1,676	1,686	1,658	1,754
Williston State College	912	731	850	949	932	993	808	909	883	1,038	1,039	1,098	1,124	1,132	959	908	924	912
Total	42,237	41,827	43,442	45,817	48,140	48,833	48,203	48,015	47,660	47,513	47,236	46,787	45,882	44,938	44,001	43,384	43,545	44,227

Source: North Dakota University System Office Webpage.

Data Source: North Dakota University System. Headcount is the total number of students enrolled regardless of the number of credit hours. NDUS reports the headcount as the number of students enrolled on the 4th week of classes in the term.

¹ “Enrollment at some institutions includes students who were registered but had not made payment or been granted an extension based on documented good cause as of the census date. This includes 24 students at NDSU, 40 students at UND, 71 students at NDSCS and 239 students at LRSC for a total of 374 students.” (Creating a University System for the 21st Century, 2007 Fall Enrollments, November 2007, p. 1)

New Students, Transfers, and Older than Average Students (OTAS)

	2012	2013	2014	2015	2016	2017	2018	2019	2020	2021	2022	2023	% Change
Total New Freshman	398	397	341	347	357	373	397	399	396	374	378	365	-3.44%
Male	164	154	121	157	154	155	176	175	167	164	146	165	13.01%
Female	234	243	220	190	203	218	221	224	229	210	232	200	-13.79%
Source: NDU02SRD- Enrollment; Campus Totals (p.37)- 1st Time Freshman-4th Week Data (includes FT & PT)													
Total Transfers	295	320	316	280	351	338	301	305	306	237	256	253	-1.17%
Male	98	115	127	116	126	129	100	110	84	69	79	99	25.32%
Female	197	205	189	164	225	209	201	195	222	168	177	154	-12.99%
Source: Enrollment Report NDU02SRD- Transfer Student-4th Week Data													
Total OTAS	866	833	767	793	730	739	729	685	621	594	579	713	23.14%
Male	345	349	342	334	306	328	309	291	236	185	175	223	27.43%
Female	521	484	425	459	424	411	420	394	385	409	404	490	21.29%
Source: Enrollment Report- NDUH2SRN - Enrollment Summary by Age (UGRD ONLY)													
New Grad Students	80	93	75	84	93	94	86	94	87	74	73	90	23.29%
Male	23	40	28	40	34	36	29	30	24	28	17	26	52.94%
Female	57	53	47	44	59	58	57	64	63	46	56	64	14.29%
Source: Enrollment Report-NDU02SRD-New Grad													

Source: Report NDU02SRD- Student Data Statistics- Enrollment- and NDUH2SRN Enrollment Summary by Age and NDU02SRK- Enrollment 1st Time Graduate-4th Week Official Enrollment Reports provided by the Registrar's Office- September 23rd,2011.Older Than Average Student (OTAS): undergraduate 25 years and older.

****Note:** Data in Fact Books 2001-2004 previously included only the data for full-time OTA undergraduate students. The numbers in this chart now include both full and part-time students for all years presented. Breakdowns of full and part-time students are presented graphically, by year, on the next page.



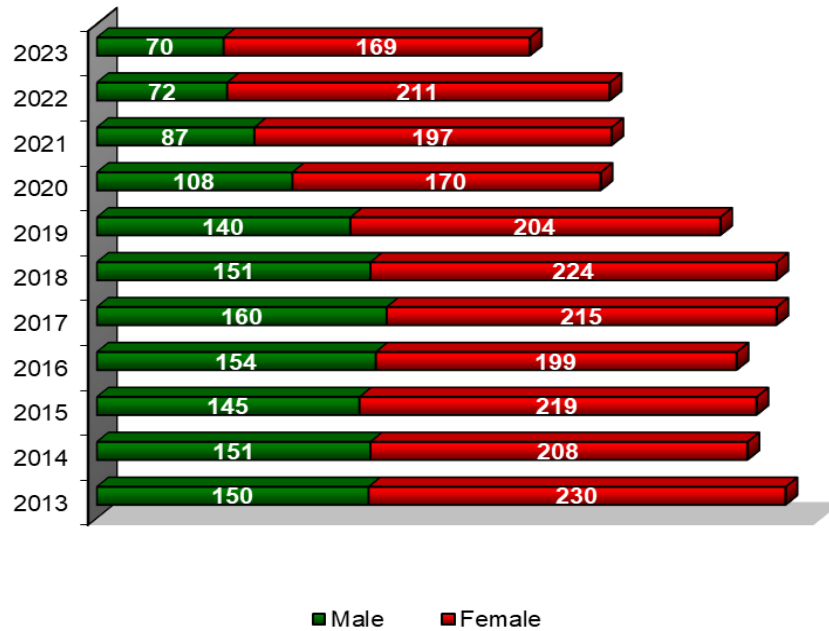
New Transfer Applications

New Transfer	2011	2012	2013	2014	2015	2016	2017	2018	2019	2020	2021*	2022	2023
Applied	558	602	791	806	783	660	517	628	532	435	334	336	326
Enrolled	275	291	462	316	312	347	338	301	305	306	237	256	253
% Enrolled	49.0%	48.4%	58.4%	39.2%	39.8%	52.6%	65.4%	59.0%	57.0%	70.30%	71.00%	76.2%	77.6%

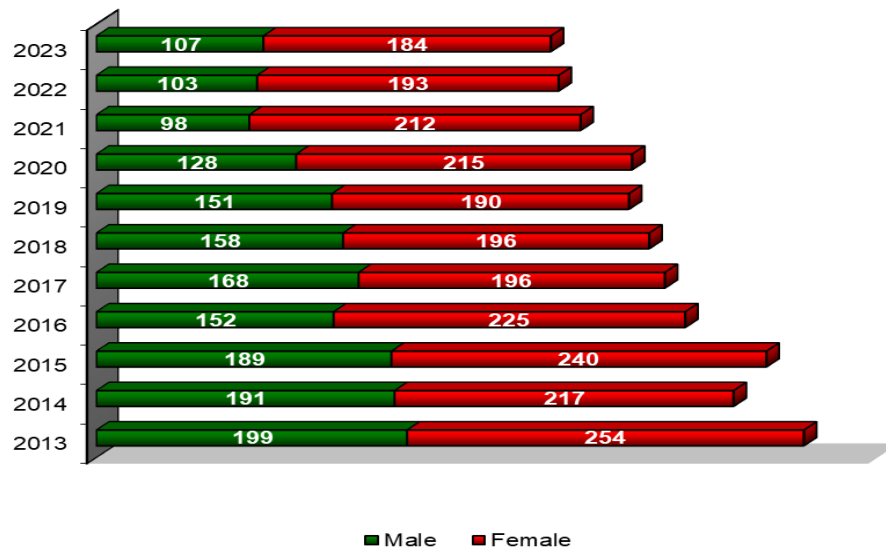
Starting in 2017 incomplete applications were no longer counted.

Older Than Average Student (OTAS) Enrollment:

Full-Time Undergraduate OTAS



Part-Time Undergraduate OTAS



(OTA = student age 25 or greater). Source: NDUH2SRN Enrollment Summary by Age- (4th Week Data)

Operating and Contributed Income Ratio

	FY2010	FY2011	FY2012	FY2013	FY2014	FY2015	FY2016	FY2017	FY2018	FY2019	FY2020	FY2021	FY2022	FY2023
Tuition and Fees	\$14,010,695	\$14,659,215	\$14,352,120	\$14,051,803	\$14,741,543	\$14,153,131	\$14,715,452	\$15,689,160	\$15,565,350	\$16,037,352	\$15,916,571	\$15,685,199	\$15,224,217	\$15,158,957
Federal grants & contracts	\$6,924,802	\$7,107,570	\$6,848,676	\$5,671,745	\$5,326,629	\$4,790,157	\$4,374,818	\$4,153,463	\$4,020,418	\$3,589,861	\$3,082,829	\$3,018,519	\$4,425,772	\$5,878,093
State grants and contracts	\$1,612,607	\$997,826	\$1,337,650	\$1,382,889	\$1,502,916	\$1,415,213	\$1,477,826	\$1,620,330	\$1,588,229	\$1,937,550	\$2,404,481	\$2,159,506	\$2,155,683	\$2,174,499
Nongovernmental Gifts and Contracts	\$53,271	\$66,715	\$501,149	\$333,594	\$320,129	\$294,588	\$381,477	\$444,286	\$334,433	\$375,022	\$308,613	\$299,698	\$331,991	\$473,861
Sales and services – Ed. Depts.	\$998,866	\$1,000,283	\$1,014,901	\$1,217,097	\$1,573,569	\$1,976,214	\$2,053,603	\$1,886,115	\$1,893,275	\$2,061,973	\$1,508,472	\$1,407,981	\$1,440,793	\$2,162,893
Auxiliary enterprise	\$3,147,506	\$3,321,354	\$3,975,179	\$4,202,608	\$4,330,493	\$4,209,525	\$4,095,952	\$3,579,800	\$3,398,933	\$3,354,281	\$2,866,757	\$3,037,611	\$3,083,901	\$3,145,093
Other operating revenue	\$61,967	\$66,130	\$68,466	\$72,923	\$74,230	\$91,534	\$135,834	\$92,629	\$84,294	\$122,824	\$124,155	\$82,273	\$87,161	\$84,178
Local Appropriations	\$0	\$0	\$0	\$0	\$694,640	\$0	\$0	\$0	\$0	\$0	\$0	\$0	\$0	\$0
Total	\$26,809,714	\$27,219,093	\$28,138,141	\$26,932,659	\$28,564,149	\$26,930,362	\$27,234,962	\$27,465,783	\$26,884,932	\$27,478,863	\$26,211,878	\$25,690,787	\$26,749,518	\$29,077,614
														\$0
Total Operating Revenue & State**	\$43,897,346	\$45,066,600	\$46,915,209	\$45,994,565	\$49,959,254	\$49,845,468	\$50,894,775	\$48,868,611	\$46,393,499	\$46,970,439	\$45,532,822	\$45,366,916	\$46,799,518	\$49,351,101
Operating & Contributed Income Ratio***	61%	60%	60%	59%	57%	54%	54%	56%	58%	59%	58%	57%	57%	59%

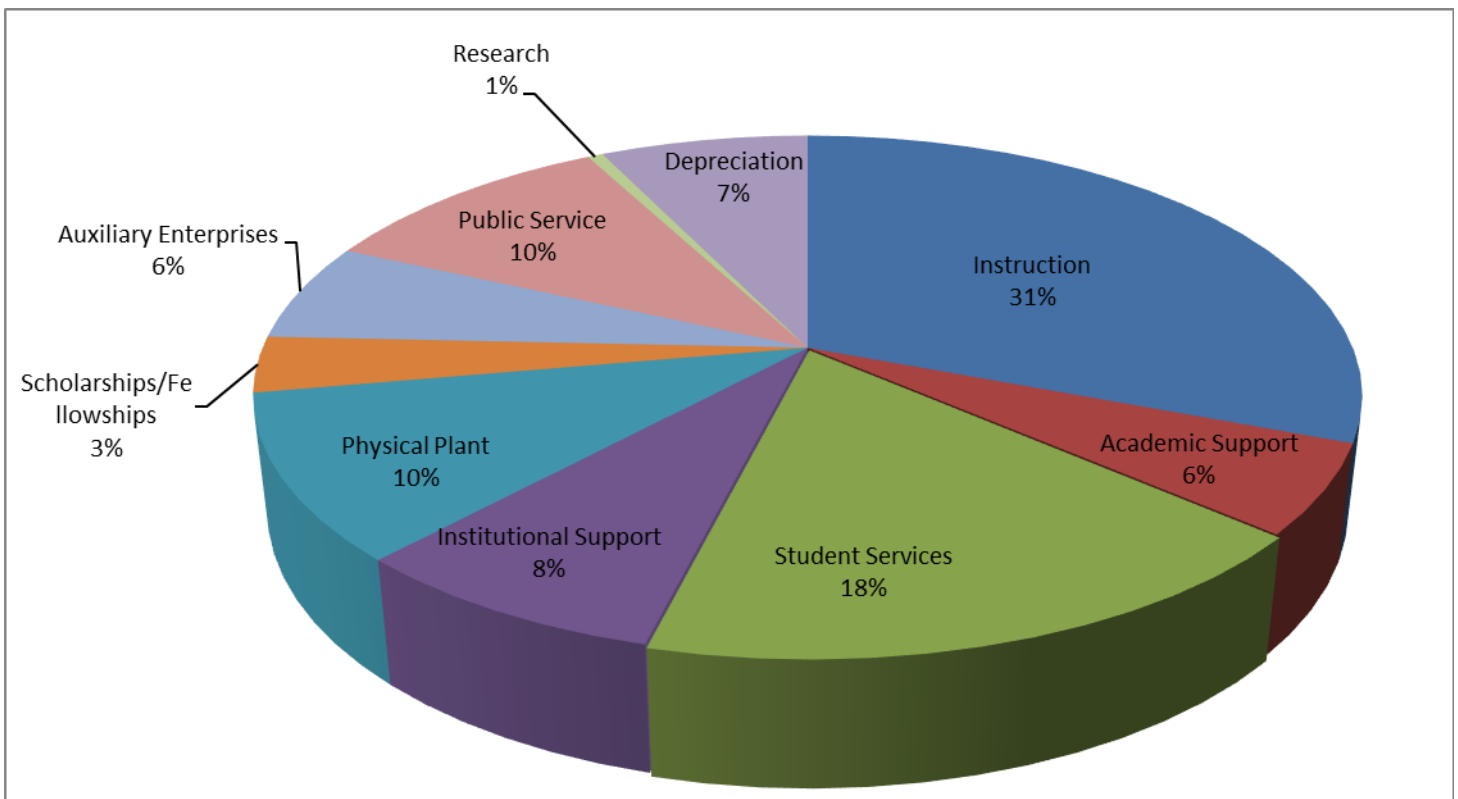
Data Source: Assistant Vice President, Business Office Controller

* **Sum of Total and State Appropriations

*** Total /Total Revenue and State

Operating Expenses by Function

Function	13-14	14-15	15-16	16-17	17-18	18-19	19-20	20-21	21-22	22-23	22-23 % Change
Instruction	\$20,172,248.00	\$21,256,392.00	\$21,292,557.41	\$19,741,863.52	\$19,304,730.87	\$18,646,335.37	\$18,681,258.57	\$19,007,726.39	\$19,441,119.28	\$19,660,114.00	1%
Academic Support	\$3,362,580.00	\$3,842,840.00	\$4,159,387.49	\$3,944,675.58	\$2,955,148.62	\$3,000,092.54	\$2,991,589.52	\$4,889,825.05	\$3,268,083.56	\$3,550,171.00	9%
Student Services	\$7,838,725.00	\$8,056,896.00	\$8,254,019.58	\$8,360,441.55	\$8,605,672.33	\$9,081,615.71	\$9,052,669.30	\$9,176,991.39	\$10,390,286.25	\$11,240,612.00	8%
Institutional Support	\$4,150,587.00	\$1,975,826.00	\$2,093,238.72	\$2,363,871.50	\$2,552,033.99	\$2,245,048.16	\$2,535,439.41	\$3,488,051.01	\$4,214,839.67	\$5,105,011.00	21%
Physical Plant	\$5,625,391.00	\$6,451,705.00	\$6,271,063.57	\$5,955,624.67	\$6,083,486.47	\$10,332,103.37	\$6,129,817.87	\$6,392,195.66	\$4,951,376.94	\$6,572,712.00	33%
Scholarships/Fellowships	\$2,090,854.00	\$771,737.00	\$818,291.32	\$1,801,503.64	\$1,912,134.69	\$1,991,924.63	\$2,920,285.80	\$2,983,199.36	\$3,873,023.06	\$2,222,682.00	-43%
Auxiliary Enterprises	\$4,472,399.00	\$4,370,563.00	\$4,440,813.39	\$4,232,510.18	\$3,937,219.61	\$3,909,538.33	\$3,701,326.42	\$3,647,041.66	\$3,637,518.21	\$3,899,617.00	7%
Public Service	\$5,173,153.00	\$5,032,294.00	\$5,171,566.28	\$5,069,841.32	\$4,926,611.95	\$5,240,035.45	\$4,892,013.66	\$4,608,267.97	\$5,434,758.16	\$6,650,937.00	22%
Research	\$210,373.00	\$344,096.00	\$413,620.00	\$424,031.27	\$419,669.46	\$298,668.32	\$253,283.31	\$257,980.66	\$232,298.08	\$342,081.00	47%
Depreciation	\$3,249,885.00	\$3,759,665.00	\$4,328,504.00	\$4,358,202.00	\$4,385,261.00	\$4,374,718.00	\$4,340,815.00	\$4,382,635.00	\$4,603,774.00	\$4,620,520.00	0%
Total	\$56,346,195.00	\$55,862,014.00	\$57,243,061.76	\$56,252,565.23	\$55,081,968.99	\$59,120,079.88	\$55,498,498.86	\$58,833,914.15	\$60,047,077.21	\$63,864,457.00	



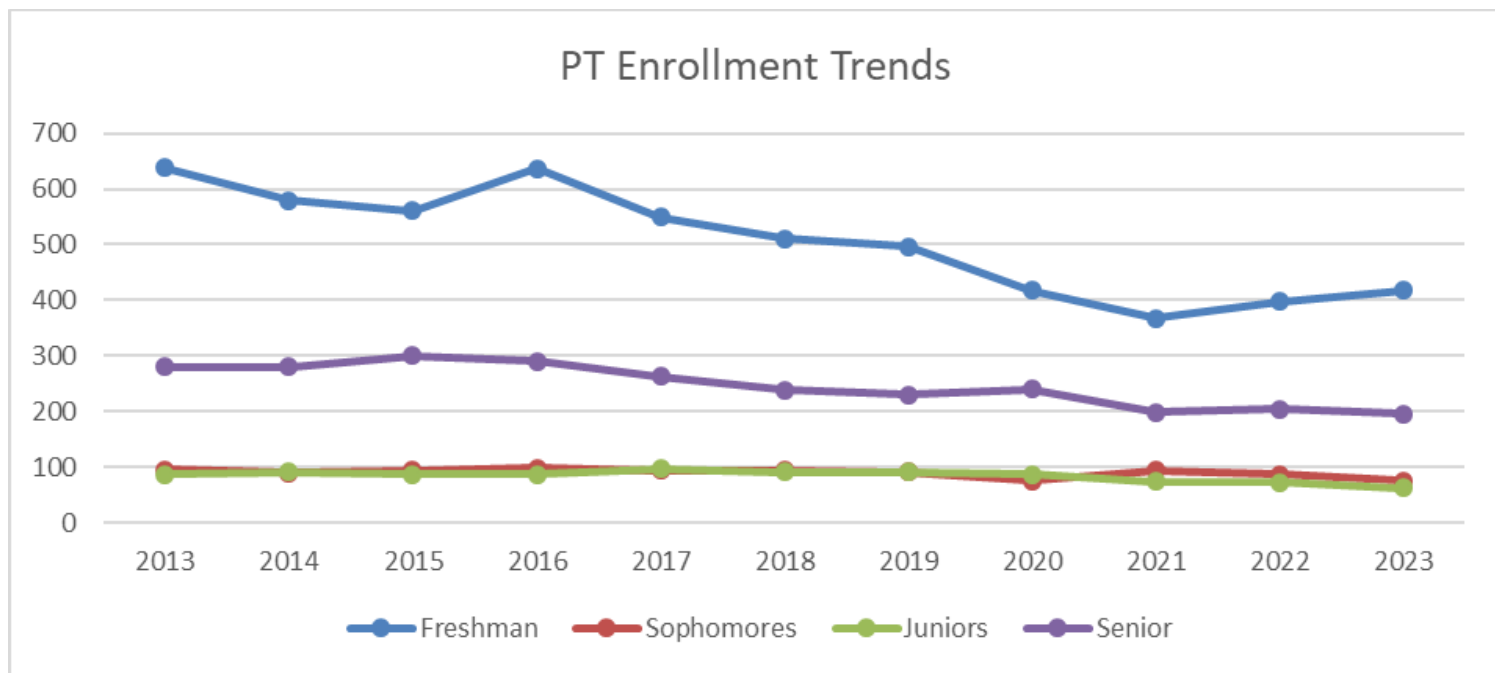
Data Source: Assistant Vice President, Business Office

Minot State Organizational Chart

Minot State's Organizational Chart can be found here: [msuorgchart.pdf \(minotstateu.edu\)](https://minotstateu.edu/msuorgchart.pdf)

Part-Time Undergraduates by Status

	2013	2014	2015	2016	2017	2018	2019	2020	2021	2022	2023
Freshman	638	579	561	637	549	511	497	417	367	397	418
Sophomores	96	90	94	99	94	94	92	76	95	88	76
Juniors	88	91	88	88	98	92	92	87	75	73	63
Senior	281	281	300	291	263	239	230	240	199	204	196



Source: NDUHSRA- Headcounts and FTE Enrollments Pg. 5 Institution Totals (4th Week Data) **Note:** Undergraduate Special (UG Special) refers to an individual who has previously earned a bachelor's degree and is taking additional undergraduate coursework. ***Note:** PeopleSoft software initiated in 2005. Undergraduate Special category no longer exists. These individuals are now included as seniors. To compare data for the seniors in 2005, the 2004 number used is the Senior + UG Special. **Note:** Undergraduate Special numbers were added to senior status for this chart.

Retention of First-year Students

Term	Full-time	Term	Still Enrolled	Retention
	First Time Freshmen			Percentage
Fall 01	506	Fall 02	321	63.0%
Fall 02	551	Fall 03	321	58.0%
Fall 04	393	Fall 05	274	70.0%
Fall 05	445	Fall 06	279	62.7%
Fall 06	461	Fall 07	292	60.0%
Fall 07	418	Fall 08	291	69.0%
Fall 08	406	Fall 09	284	70.0%
Fall 09	419	Fall 10	296	71.0%
Fall 10	461	Fall 11	291	62.0%
Fall 11	435	Fall 12	287	65.3%
Fall 12	353	Fall 13	240	68.0%
Fall 13	349	Fall 14	234	67.0%
Fall 14	316	Fall 15	237	75.0%
Fall 15	314	Fall 16	217	70.0%
Fall 16	312	Fall 17	215	69.0%
Fall 17	335	Fall 18	235	70.0%
Fall 18	384	Fall 19	275	72.0%
Fall 19	390	Fall 20	273	71.0%
Fall 20	375	Fall 21	274	73.0%
Fall 21	352	Fall 22	248	70.5%
Fall 22	359	Fall 23	257	71.6%

"New Calculation: 1998 – 2002 Calculation for Retention: All new freshmen who return the following year. *2004 Calculation for Retention: New freshmen enrolled Fall 2003 (12 semester hours or more) and returned for any number of credits in Fall 2004."

6 Year Graduation Rates of First-Year Students

Fall Term	6 Year Graduation Rate
2002	33%
2003	34%
2004	32%
2005	29%
2006	27%
2007	31%
2008	30%
2009	31%
2010	39%
2011	34%
2012	34%
2013	37%
2014	40%
2015	42%
2016	43%
2017	37%
2018	46%
2019	45%
2020	55%
2021	46%
2022	45%
2023	48%

6 year graduation rates derived from First Year Fall term students who graduate in 6 years or less from Minot State University

Continuation and Graduation Rates by Freshmen Cohort										
Fall	# in Cohort	Avg ACT	Retention Rates		Cumulative Graduation/Retention Rates					
			*Retained 2nd Year	Retained 3rd Year	4 YEARS		5 YEARS		6 YEARS	
					Retained 4th Year	Graduated 4th Year	Retained 5th Year	Graduated 5th Year	Retained 6th Year	Graduated Within 6 Years
2006	461	20.9	69%	48%	42%	13%	32%	15%	14%	33%
2007	418	21.6	69%	53%	48%	14%	30%	18%	13%	37%
2008	406	21.8	70%	56%	48%	13%	31%	20%	14%	40%
2009	419	21.3	71%	55%	49%	16%	34%	18%	15%	43%
2010	461	21.8	63%	51%	48%	18%	33%	18%	15%	43%
2011	435	21.9	66%	53%	47%	17%	30%	16%	9%	37%
2012	353	22.6	68%	56%	52%	24%	11%	17%	7%	46%
2013	349	21.8	67%	60%	52%	23%	14%	17%	4%	45%
2014	316	22.5	75%	69%	56%	35%	9%	14%	2%	54%
2015	314	22.0	70%	57%	53%	25%	21%	17%	7%	46%
2016	312	21.0	69%	58%	58%	25%	16%	39%	3%	45%
2017	334	22.0	70%	64%	52%	27%	9%	41%	5%	48%
2018	384	21.0	72%	65%	56%	23%	7%	43%	Fall 2024	Summer 2024
2019	390	21.2	71%	66%	53%	24%	Fall 2024	Summer 2024	Fall 2025	Summer 2025
2020	374	21.0	73%	58%	58%	Summer2024	Fall 2025	Summer 2025	Fall 2026	Summer 2026
2021	352	20.7	70%	66%	Fall 2024	Summer 2025	Fall 2026	Summer 2026	Fall 2027	Summer 2027
2022	359	20.5	69%	Fall 2024	Fall 2025	Summer 2026	Fall 2027	Summer 2027	Fall 2028	Summer 2028
2023	354		Fall 2024	Fall 2025	Fall 2026	Summer 2027	Fall 2028	Summer 2028	Fall 2029	Summer 2029
2024			Fall 2025	Fall 2026	Fall 2027	Summer2028	Fall 2029	Summer 2029	Fall 2030	Summer 2030

Staff by Job Family and Gender

Fall 2023			
Job Family	Female	Male	Total
Executive/Administrative 1000 Administrative/Managerial	13	14	27
2000 Coaches and Research Associates	64	27	91
3000 Other Professional	46	25	71
4000 Technical and Paraprofessional	19	7	26
5000 Clerical and Secretarial	30	2	32
6000 Skilled Crafts	1	10	11
7000 Services/Maintenance	12	15	27
Total	185	100	285

Data Source: Human Resources-as reported to IPEDS.

Student Activity Fee Distribution

Student Government Activity Fee	11-12	12-13	13-14	14-15	15-16	16-17	17-18	18-19	19-20	20-21	21-22	22-23	23-24
NW Art Center (Art Gallery)	\$2.90	\$2.90	\$2.90	\$2.90	\$2.90	\$2.90	\$2.90	\$3.40	\$4.50	\$3.26	\$3.26	\$3.45	\$3.45
Theatre Arts	\$2.61	\$2.61	\$2.61	\$2.61	\$2.61	\$2.61	\$2.61	\$3.11	\$4.00	\$2.90	\$2.90	\$2.90	\$2.90
Music	\$3.50	\$3.50	\$3.50	\$3.50	\$3.50	\$3.50	\$3.50	\$3.50	\$3.50	\$2.54	\$2.54	\$2.54	\$2.54
Student Tours	\$5.00	\$5.00	\$5.00	\$5.00	\$5.00	\$5.00	\$5.00	\$5.00	\$6.00	\$4.35	\$4.35	\$4.35	\$4.35
Student Government Association	\$27.00	\$30.00	\$30.00	\$30.00	\$30.00	\$30.00	\$35.00	\$35.00	\$35.00	\$25.39	\$25.39	\$25.39	\$25.39
Student Activities	\$25.00	\$29.50	\$29.50	\$29.50	\$29.50	\$29.50	\$35.00	\$35.00	\$35.00	\$25.39	\$25.39	\$25.39	\$25.39
Student Placement	\$26.00	\$26.00	\$26.00	\$26.00	\$26.00	\$26.00	\$26.00	\$26.00	\$26.00	\$18.86	\$18.86	\$18.86	\$18.86
Publications	\$10.08	\$10.08	\$10.08	\$10.08	\$10.08	\$10.08	\$12.08	\$12.08	\$12.08	\$8.76	\$8.76	\$8.76	\$8.76
KMSU	\$3.25	\$3.25	\$3.25	\$3.25	\$3.25	\$3.25	\$3.25	\$3.85	\$3.85	\$3.52	\$3.52	\$3.52	\$3.52
Homecoming	\$9.00	\$9.00	\$9.00	\$9.00	\$9.00	\$9.00	\$9.00	\$9.00	\$9.00	\$6.53	\$6.53	\$6.53	\$11.53
Native American Cultural Center	\$4.00	\$4.00	\$4.00	\$4.00	\$2.00	\$2.00	\$2.00	\$4.00	\$4.00	\$2.90	\$2.90	\$5.00	\$5.00
Building Renovations	\$10.00	\$10.00	\$0.00	\$0.00	\$0.00	\$0.00	\$0.00	\$0.00	\$0.00	\$0.00	\$0.00	\$0.00	\$0.00
Reserve	\$0.00	\$0.00	\$0.05	\$0.05	-\$0.05	\$0.03	\$0.00	\$0.00	\$0.07	\$0.00	\$0.00	-\$0.08	-\$0.04
Student Gov. Club Funding	\$5.00	\$5.00	\$5.00	\$5.00	\$4.50	\$4.50	\$7.00	\$7.00	\$7.00	\$5.08	\$5.08	\$5.08	\$5.08
Men's Hockey Club	\$13.00	\$17.50	\$17.50	\$17.50	\$17.50	\$22.50	\$22.50	\$22.50	\$22.50	\$16.32	\$16.32	\$16.32	\$16.32
Women's Hockey Club	\$0.00	\$0.00	\$0.00	\$0.00	\$0.00	\$0.00	\$0.00	\$8.50	\$13.50	\$12.33	\$12.33	\$12.33	\$12.33
Mentoring	\$1.50	\$1.50	\$1.50	\$1.50	\$3.00	\$3.00	\$3.00	\$3.00	\$3.00	\$2.18	\$4.18	\$4.18	\$4.18
Tutoring	\$5.00	\$5.00	\$5.00	\$9.00	\$9.00	\$9.00	\$9.00	\$10.00	\$10.00	\$7.26	\$7.26	\$7.26	\$7.26
Beaver Athletic Band	\$2.50	\$2.50	\$2.50	\$2.50	\$2.50	\$2.50	\$2.50	\$2.50	\$2.50	\$1.81	\$1.81	\$1.81	\$1.81
Marching Band	\$3.00	\$3.00	\$3.00	\$3.00	\$3.00	\$3.00	\$5.00	\$5.00	\$5.00	\$3.63	\$3.63	\$3.63	\$3.63
Writing Center Tutors	\$0.00	\$0.00	\$0.00	\$0.00	\$2.00	\$2.00	\$2.00	\$2.00	\$2.00	\$1.45	\$1.45	\$1.45	\$1.45
Flat Tail Press	\$0.00	\$0.00	\$0.00	\$0.00	\$0.00	\$0.00	\$0.00	\$1.00	\$1.00	\$0.73	\$1.73	\$1.73	\$1.73
Hartnett Hall Gallery	\$0.00	\$0.00	\$0.00	\$0.00	\$0.00	\$0.00	\$0.00	\$0.00	\$0.00	\$0.73	\$0.73	\$0.73	\$0.73
Multicultural Support	\$0.00	\$0.00	\$0.00	\$0.00	\$0.00	\$0.00	\$0.00	\$0.00	\$0.00	\$1.81	\$1.81	\$1.81	\$1.81
Capital Infrastructure	\$0.00	\$0.00	\$0.00	\$0.00	\$0.00	\$0.00	\$0.00	\$0.00	\$0.00	\$0.00	\$0.00	\$32.14	\$87.12
Esports	\$0.00	\$0.00	\$0.00	\$0.00	\$0.00	\$0.00	\$0.00	\$0.00	\$0.00	\$0.00	\$0.00	\$0.00	\$2.50
Total	\$158.34	\$170.34	\$160.39	\$164.39	\$165.29	\$170.37	\$187.34	\$201.44	\$209.50	\$157.73	\$160.73	\$195.08	\$257.60

The per-semester fee for full-time students is separated into two portions: the university fee and the Student Government activity fee. The university fee supports activities that benefit the student body as a whole, while the Student Government activity fee goes toward supporting specific activities. The tables below provide a breakdown of the allocation of these fees. These are added to the tuition and are charged per semester.

Data Source: Student Handbook www.minotstateu.edu/student_handbook.pdf

Minot State University
Student Enrollment Highlights: FTE/Total*

	2019 Fall Semester			2020 Fall Semester			2021 Fall Semester			2022 Fall Semester			2023 Fall Semester		
Academic Level	2019 Fall Semester FT + FTE of PT	Total Scheduled Credit Hours	FTE of Total Credit Hours	2020 Fall Semester FT + FTE of PT	Total Scheduled Credit Hours	FTE of Total Credit Hours	2021 Fall Semester FT + FTE of PT	Total Scheduled Credit Hours	FTE of Total Credit Hours	2022 Fall Semester FT + FTE of PT	Total Schedule d Credit Hours	FTE of Total Credit Hours	2023 Fall Semester FT + FTE of PT	Total Schedule d Credit Hours	FTE of Total Credit Hours
Freshmen	610.54	8938.00	595.86	563.17	8183.50	545.57	556.10	8144.00	542.94	546.64	7931.50	528.78	551.43	8017.50	534.49
Sophomore	503.80	7492.50	499.50	504.20	7429.50	495.30	482.54	7027.00	468.47	459.64	6675.50	445.03	441.36	6471.00	431.39
Junior	492.60	7248.00	483.19	453.40	6686.50	445.77	421.31	6235.00	415.66	401.00	5834.00	388.94	412.33	6104.00	406.94
Senior	655.24	9509.00	633.93	634.80	9103.00	606.86	667.27	9626.00	641.72	659.37	9467.00	631.13	598.53	8678.00	578.54
Total Undergrad.	2262.18	33187.50	2212.48	2155.57	31402.50	2093.50	2127.22	31032.00	2068.79	2066.65	29908.00	1993.88	2003.65	29270.50	1951.36
Graduate	180.66	2242.00	186.83	175.58	2155.00	179.58	173.59	2073.00	172.76	167.08	2074.00	172.83	179.67	2208.50	184.04
Institutional Total FTE	2442.84	3549.50	2399.31	2331.15	33557.50	2273.08	2300.81	33105.00	2241.55	2233.73	31982.00	2166.71	2183.32	2208.50	2135.40

The calculations are based upon 15 credit hours for full-time undergraduate students and 12 credit hours for graduate students.

Source: Report NDUH2SRA- Headcounts and FTE Enrollments- Official Enrollment Report (4th Week Data)

Student Totals by Ethnicity
(Graduate and undergraduate combined)

	2013	2014	2015	2016	2017	2018	2019	2020	2021	2022	2023	Fall 2022 % Chg
Caucasian	2420	2360	2258	2265	2235	2170	2138	1995	1925	1868	1750	-6.32%
Male	874	867	789	786	829	777	776	680	619	599	563	-6.01%
Female	1546	1493	1469	1479	1406	1393	1362	1315	1306	1269	1187	-6.46%
African American	158	167	175	195	184	178	133	111	93	115	135	17.39%
Male	102	113	119	133	112	103	65	60	49	65	80	23.08%
Female	56	54	56	62	71	75	68	51	44	50	55	10.00%
American Indian	64	52	45	58	49	63	57	57	51	60	48	-20.00%
Male	22	21	17	22	17	19	16	12	11	13	15	15.38%
Female	42	31	28	36	32	44	41	45	40	47	33	-29.79%
Asian/Pacific Islander	43	59	76	80	68	64	51	55	48	56	48	-14.29%
Male	20	27	35	39	30	31	31	28	24	27	21	-22.22%
Female	23	32	41	41	29	33	20	27	24	29	26	-10.34%
Hispanic	135	167	197	236	221	219	228	221	229	219	249	13.70%
Male	54	76	80	116	92	94	95	100	99	97	120	23.71%
Female	81	91	117	120	129	125	133	121	130	122	129	5.74%
Non Resident Alien	402	411	404	377	278	313	338	307	313	278	271	-2.52%
Male	149	160	180	173	122	136	145	122	118	94	97	3.19%
Female	253	251	224	204	156	177	193	185	195	184	174	-5.43%
Two or More Races	92	100	126	139	127	132	144	149	158	159	172	8.18%
Male	33	33	45	53	47	59	61	72	76	72	90	25.00%
Female	59	67	81	86	80	73	83	77	82	87	82	-5.75%
Not Reported	203	94	67	62	54	50	32	25	19	22	68	209.09%
		3410	3348	3412	3216	3189	3121	2920	2836	2777	2741	-1.30%

Resource: NDU02SRK Compliance Report-Enrollment by Ethnicity Pg 40 Campus Totals (4th Week Data). Percentage change: <http://www.csqnetwork.com/percentchangealc.html>

Students by Residency

	2013	2014	2015	2016	2017	2018	2019	2020	2021	2022	2023	% chg
Total North Dakota	2353	2236	2117	2209	2123	2134	1808	1658	1650	1644	1571	-4.44%
Male	902	871	767	813	801	815	595	521	494	482	482	0.00%
Female	1451	1365	1350	1396	1322	1319	1213	1137	1156	1162	1089	-6.28%
Total ND Military		289	282	348	340	351	306	255	206	218	235	7.80%
Male		180	166	203	203	206	165	133	92	99	121	22.22%
Female		109	116	145	137	145	141	122	114	119	114	-4.20%
Total Non-Resident	1180	1174	1231	1196	1135	1039	1007	1007	979	915	182	-80.11%
Male	442	471	524	530	479	456	447	432	420	392	86	-78.06%
Female	738	703	707	665	656	583	560	575	559	523	96	-81.64%
Canadian Residents	278	258	238	208	186	184	192	185	186	160	150	-6.25%
British Columbia	14	17	14	8	6	8	5	5	6	7	6	-14.29%
Alberta	29	22	24	24	24	26	32	29	31	27	28	3.70%
Saskatchewan	174	159	136	122	105	95	92	80	81	64	52	-18.75%
Manitoba	57	56	54	47	41	45	54	61	57	58	54	-6.90%
Ontario	2	3	6	5	8	8	6	6	6	8	8	0.00%
New Brunswick	1	1	0	0	1	1	2	2	2	0	0	
Quebec	1	0	0	1	0	0	0	0	0	0	0	
Nova Scotia	0	0	0	1	1	1	1	1	1	1	0	-100.00%
Yukon	0	0	0	0	0	0	0	0	2	1	1	0.00%
Newfoundland	0	0	0	0	0	0	0	0	0	0	1	

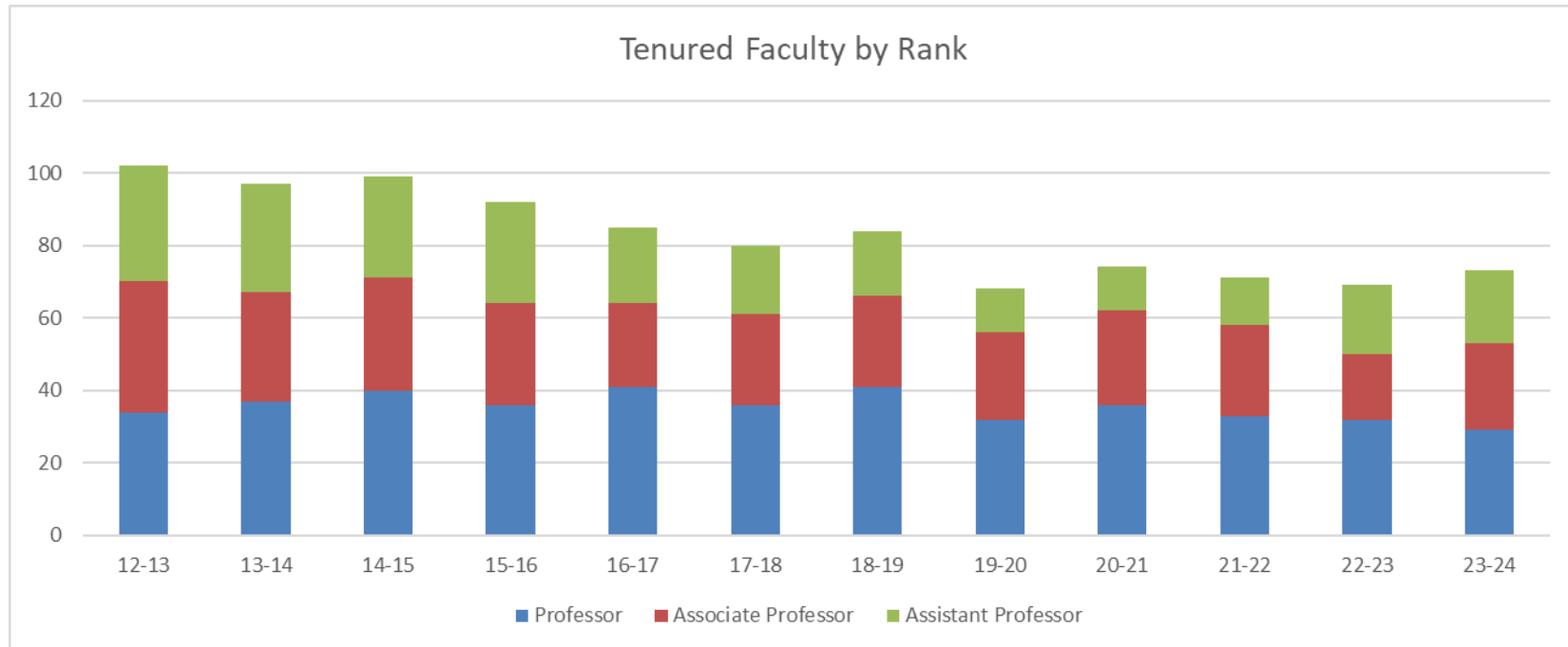
Source: NDU02SRD Student Data Statistics- Enrollment Residency-(4th Week Data).

Note: PeopleSoft does not separate ND and Military from ND residents. Total nonresident includes all enrollments minus ND and military.

* Includes two students who did not identify gender. The "Total Non-Resident" category contains all students that are not residents of ND, including: out-of-state and international (including Canadian). Percentage change: <http://www.csghnetwork.com/percentchangepcalc.html>

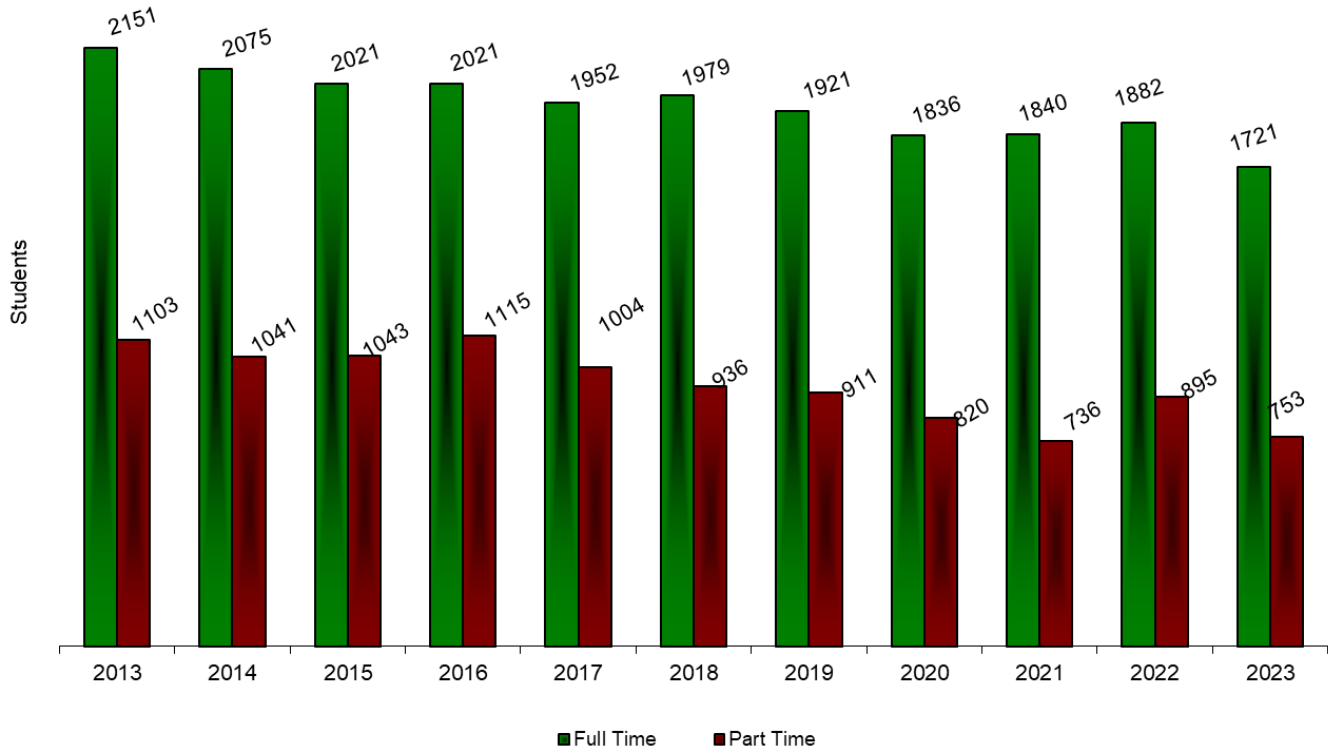
Tenured Faculty by Rank

	<u>09-10</u>	<u>10-11</u>	<u>11-12</u>	<u>12-13</u>	<u>13-14</u>	<u>14-15</u>	<u>15-16</u>	<u>16-17</u>	<u>17-18</u>	<u>18-19</u>	<u>19-20</u>	<u>20-21</u>	<u>21-22</u>	<u>22-23</u>	<u>23-24</u>
Professor	30	32	34	34	37	40	36	41	36	41	32	36	33	32	29
Associate Professor	39	38	39	36	30	31	28	23	25	25	24	26	25	18	24
Assistant Professor	34	32	31	32	30	28	28	21	19	18	12	12	13	19	20
Total	103	102	104	102	97	99	92	85	80	84	68	74	71	66	73

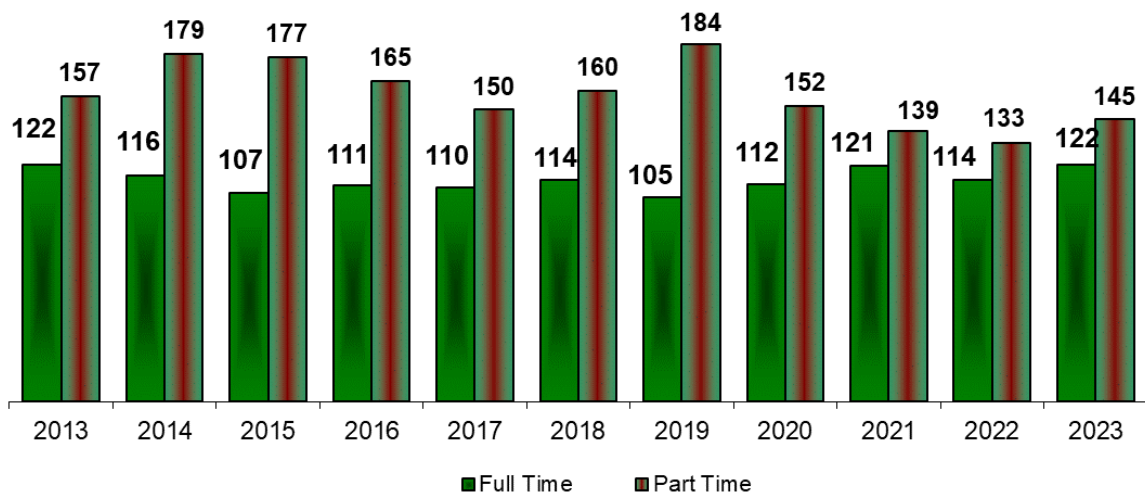


Data Source: Human Resources as reported to IPEDS.

Total Full-time/Part Time Status Undergraduate Students



Graduate Students

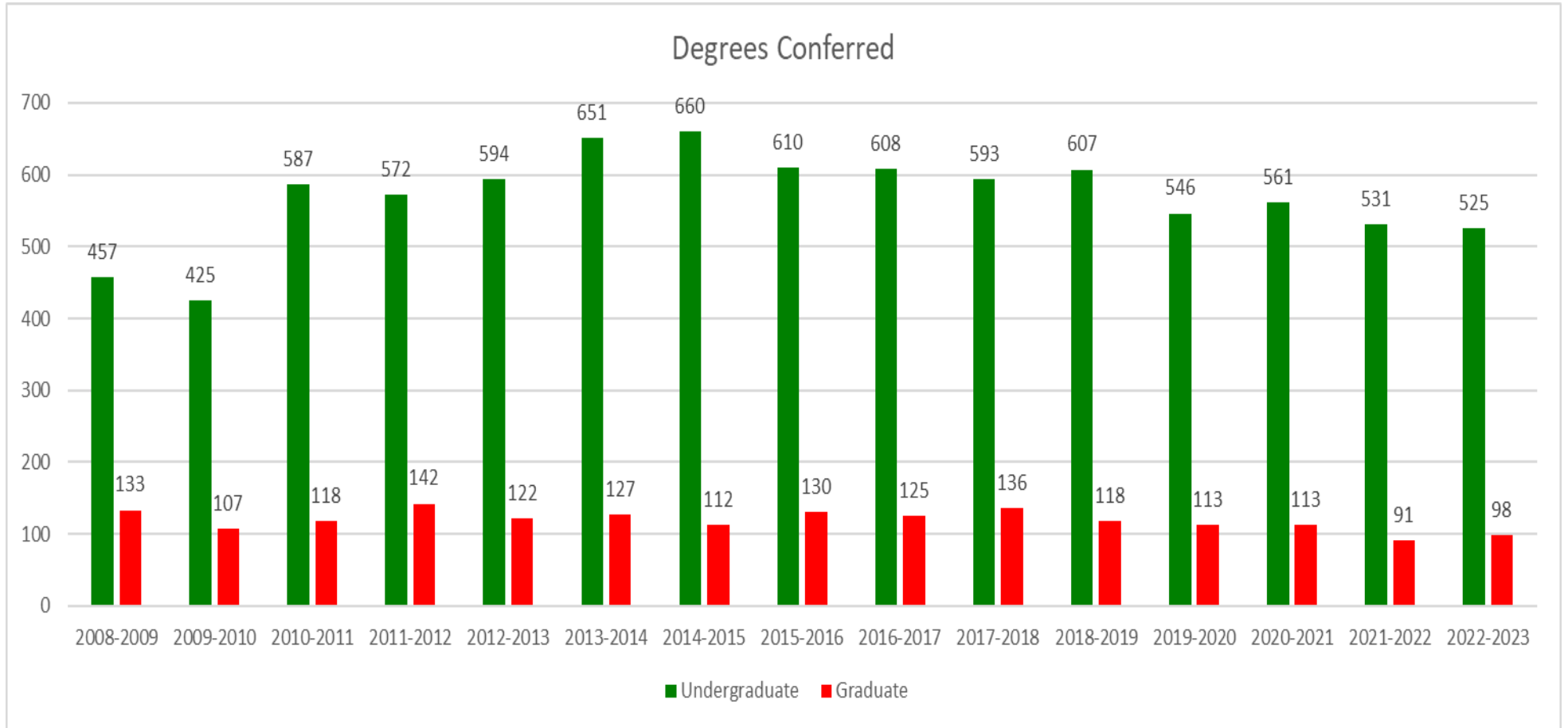


Source: NDUHSRA- Headcounts and FTE Enrollments Pg. 5 Institution Totals- (4th Week Data)

Tuition and Fees per Semester

Undergraduate	12-13	13-14	14-15	15-16	16-17	17-18	18-19	19-20	20-21	21-22	22-23	23-24	% Chg
Resident	\$2,960.88	\$3,043.32	\$3,112.92	\$3,195.12	\$3,284.04	\$3,404.64	\$3,531.84	\$3,795.72	\$3,947.76	\$4,081.65	\$4,253.88	\$4,316.40	1.5%
Contiguous States and Provinces	\$2,960.88	\$3,043.32	\$3,112.92	\$3,195.12	\$3,284.04	\$3,404.64	\$3,531.84	\$3,795.72	\$3,947.76	\$4,081.65	\$4,253.88	\$4,316.40	1.5%
Minnesota Reciprocity	\$2,960.88	\$3,043.32	\$3,112.92	\$3,195.12	\$3,284.04	\$3,404.64	\$3,531.84	\$3,795.72	\$3,947.76	\$4,081.65	\$4,253.88	\$4,316.40	1.5%
WUE**	\$2,960.88	\$3,043.32	\$3,112.92	\$3,195.12	\$3,284.04	\$3,404.64	\$3,531.84	\$3,795.72	\$3,947.76	\$4,081.65	\$4,253.88	\$4,316.40	1.5%
Non-Resident	\$2,960.88	\$3,043.32	\$3,112.92	\$3,195.12	\$3,284.04	\$3,404.64	\$3,531.84	\$3,795.72	\$3,947.76	\$4,081.65	\$4,253.88	\$4,316.40	1.5%
Graduate	11-12	13-14	14-15	15-16	16-17	17-18	18-19	19-20	20-21	21-22	22-23	23-24	% Chg
Resident	\$3,719.40	\$3,820.80	\$3,909.84	\$4,011.96	\$4,120.44	\$4,274.64	\$4,436.64	\$4,776.40	\$4,967.64	\$5,131.65	\$5,345.88	\$5,408.40	1.2%
Contiguous States & Provinces	\$3,719.40	\$3,820.80	\$3,909.84	\$4,011.96	\$4,120.44	\$4,274.64	\$4,436.64	\$4,776.40	\$4,967.64	\$5,131.65	\$5,345.88	\$5,408.40	1.2%
WUE**	\$3,719.40	\$3,820.80	\$3,909.84	\$4,011.96	\$4,120.44	\$4,274.64	\$4,436.64	\$4,776.40	\$4,967.64	\$5,131.65	\$5,345.88	\$5,408.40	1.2%
Minnesota Reciprocity	\$3,719.40	\$3,820.80	\$3,909.84	\$4,011.96	\$4,120.44	\$4,274.64	\$4,436.64	\$4,776.40	\$4,967.64	\$5,131.65	\$5,345.88	\$5,408.40	1.2%
Non-Resident	\$3,719.40	\$3,820.80	\$3,909.84	\$4,011.96	\$4,120.44	\$4,274.64	\$4,436.64	\$4,776.40	\$4,967.64	\$5,131.65	\$5,345.88	\$5,408.40	1.2%

Tuitions and fees are for all courses. The tuition and fees cap at 12 credits. Undergraduates may take up to 18 credits before an additional fee is charged. Graduate credits are capped at 12 credits for the tuition noted above. A full-time student, for tuition purposes, is a person who is enrolled in 12 or more semester hours of credit. The cost of tuition and fees for part-time enrollments is prorated.



Data Source: Completions Data for NDUS Provided by Registrar's Office. Data includes double majors and excludes certificate completers.

North Dakota Graduate and Undergraduate Students by North Dakota County

	2013	2014	2015	2016	2017	2018	2019	2020	2021	2022	2023
No County	0	0	0	0	0	0	0	0	0	0	0
Adams	0	0	0	0	0	0	0	0	1	3	4
Barnes	4	5	2	0	2	1	5	7	5	4	8
Benson	7	9	6	7	6	5	3	6	7	3	6
Billings	1	0	0	0	0	0	0	0	0	0	1
Bottineau	48	47	46	43	37	34	21	21	28	27	30
Bowman	1	3	1	3	2	2	2	2	1	3	1
Burke	20	14	17	14	11	11	12	14	15	15	7
Burleigh	148	128	119	119	132	119	110	112	100	95	83
Cass	55	49	45	43	41	58	50	48	56	55	47
Cavalier	1	0	3	2	1	2	1	3	6	7	4
Dickey	4	3	2	1	2	1	2	1	1	2	1
Divide	6	1	5	4	6	7	8	8	8	10	11
Dunn	2	0	0	3	1	5	3	4	5	5	7
Eddy	2	1	1	1	0	0	0	0	0	1	0
Emmons	7	1	2	4	4	2	2	0	2	1	6
Foster	4	5	5	4	4	4	3	3	1	5	7
Golden Valley	1	1	0	0	3	1	1	1	1	1	1
Grand Forks	18	15	19	16	12	12	15	14	22	18	27
Grant	2	2	1	2	1	1	0	0	0	0	0
Griggs	1	2	2	0	1	2	1	0	0	0	0
Hettinger	2	2	3	1	0	1	2	2	2	3	0
Kidder	2	2	1	2	0	1	2	0	0	0	1
La Moure	2	2	1	0	1	2	1	1	2	3	4
Logan	3	4	0	1	0	0	0	1	1	2	2
McHenry	86	82	69	56	53	52	37	44	38	46	45
McIntosh	0	0	2	2	1	2	2	1	1	0	1
McKenzie	14	16	15	13	12	13	11	14	18	17	12
McLean	35	35	31	33	28	25	23	26	23	34	32
Mercer	17	15	11	12	13	6	12	12	9	11	7
Morton	44	41	45	51	43	42	38	32	36	43	39

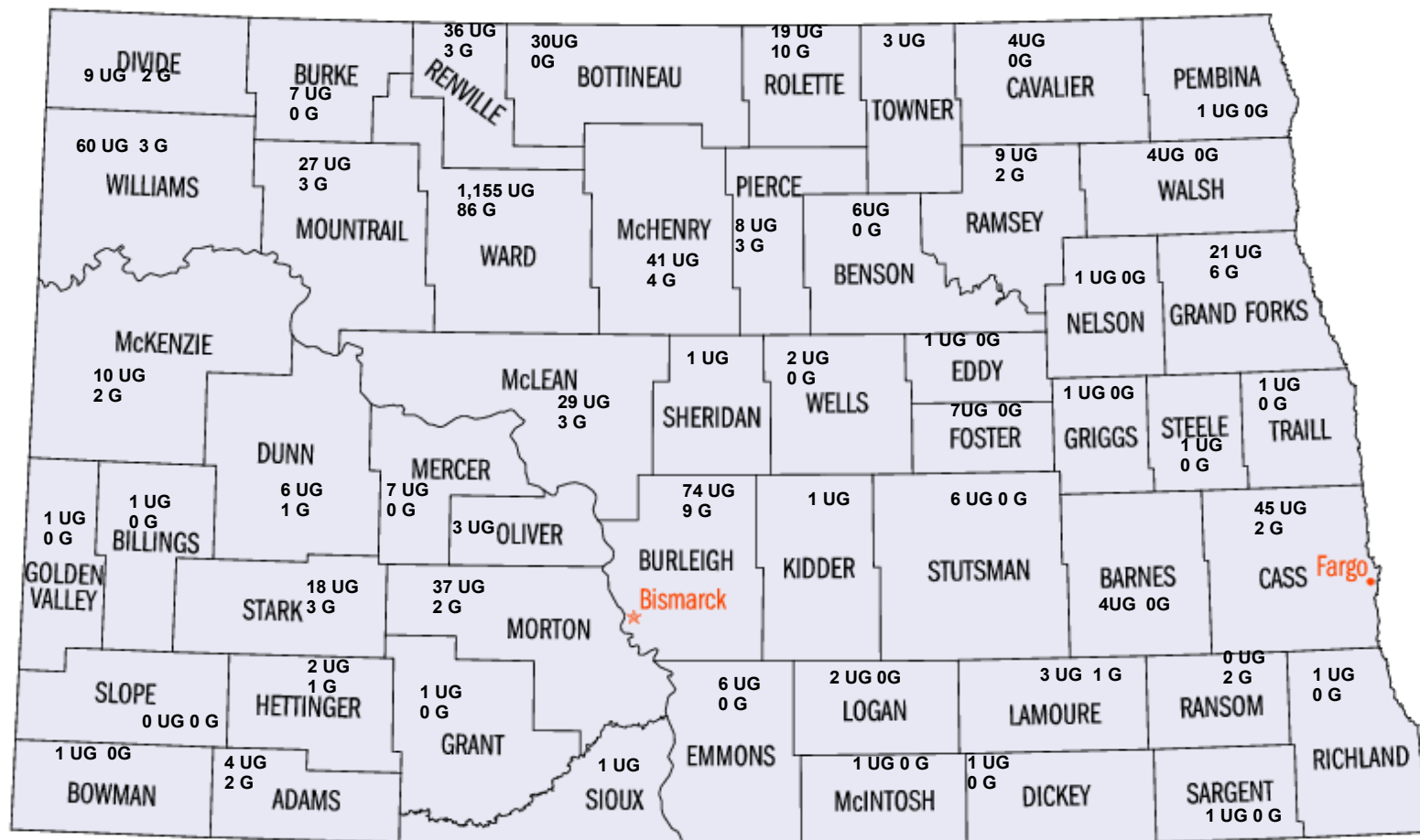
Continue to next page

Mountrail	42	23	34	43	36	30	37	31	23	34	30
Nelson	1	3	1	0	2	1	1	0	2	0	1
Oliver	1	1	1	1	0	0	1	0	2	2	3
Pembina	4	3	2	2	1	0	0	0	4	1	1
Pierce	23	15	10	11	13	11	13	11	13	13	11
Ramsey	16	11	13	19	9	9	5	7	14	11	11
Ransom	1	0	1	1	0	0	0	2	0	0	0
Renville	26	26	23	36	37	36	31	28	30	32	39
Richland	4	4	5	3	2	1	1	4	5	3	1
Rolette	18	19	14	22	19	34	32	31	33	29	29
Sargent	1	1	1	1	0	0	0	0	1	1	1
Sheridan	6	3	1	2	4	3	3	3	2	3	1
Sioux	1	2	1	2	2	1	0	1	2	1	0
Slope	1	0	1	0	0	0	0	0	0	0	0
Stark	0	21	16	13	13	17	18	20	16	15	21
Steele	23	0	0	0	0	1	1	1	1	1	0
Stutsman	9	12	14	8	10	8	8	9	8	9	6
Towner	5	2	2	4	2	4	4	0	2	3	3
Traill	6	7	4	2	1	2	2	0	0	1	1
Walsh	7	3	4	2	3	3	4	8	10	10	4
Ward	1828	1754	1718	1789	1692	1680	1512	1410	1320	1269	1241
Wells	14	13	7	6	6	6	6	6	6	3	2
Williams	73	75	70	63	54	48	45	58	65	61	63
Total ND	2647	2483	2397	2467	2323	2306	2091	2007	1948	1916	1863

Data Source: NDUH2SRG- (4th Week Data). NOTE: 2011 reported having 4UG with no county indicated and 1UG from Pima county, which does not exist in ND

Undergraduate and Graduate Enrollment by North Dakota County

N= 1718 UG N= 145 G



Undergraduate Certificates Awarded

CIP	Undergraduate Certificate Programs	2014	2015	2016	2017	2018	2019	2020	2021	2022	2023
11.0201	Computer Science Basic Programming (UGRD CERT)	1	0	0	0	0	0	0	0	0	0
13.1099	Human Services: Intellectual and Developmental Disabilities (UGRD CERT)	0	0	0	0	0	0	0	1	0	0
16.0501	Foreign Language: German (UGRD CERT)										1
16.0901	Foreign Language: French (UGRD CERT)										2
16.0905	Foreign Language: Spanish (UGRD CERT)										2
16.1203	Foreign Language: Latin (UGRD CERT)										2
23.1301	Writing in Discipline (UGRD CERT)									0	1
30.7001	Data Science (UGRD CERT)										0
30.7101	Data Analytics (UGRD CERT)										0
52.0211	Project Management (UGRD CERT)										0
52.0213	Leadership Studies (UGRD CERT)							0	0	0	3
52.0407	Application Software Specialist (UGRD CERT)	9	5	1	0	0	0	0	0	0	0
52.0799	Entrepreneurship (UGRD CERT)					2	6	4	3	1	1
52.1201	Information Assurance (UGRD CERT)						1	1	0	0	0
	Aspirations for Professional Excel (UGRD CERT)										0
	Severe Disabilities (UGRD CERT)										0
	Totals	10	5	1	0	2	7	5	4	1	12

Graduate Certificates Awarded

CIP	Graduate Certificate Programs	2011	2012	2013	2014	2015	2016	2017	2018	2019	2020	2021	2022	2023
52.1299	Knowledge Management (GRAD CERT)	28	14	6	4	2	1	3	2	2	1	1	0	0
11.1003	Cyber Security (GRAD CERT)								0	0	0	0	0	0
13.1001	Deaf and Hard of Hearing (GRAD CERT)				1	1	2	2	6	1	2	1	0	2
13.1001	Special Education Strategist (GRAD CERT)							1	2	0	1	1	2	1
13.1001	Early Childhood Spec Ed (GRAD CERT)							1	0	0	0	0	0	0
13.1311	Mathematics Education (GRAD CERT)												0	0
52.0201	Management Concepts (GRAD CERT)							0	15	21	1	17	22	0
52.1201	Cyber Security Management (GRAD CERT)									9	4	1	2	0
52.0213	Leadership (GRAD CERT)											0	0	1
52.0213	Sports Leadership (GRAD CERT)											0	0	0
	Sports Medecine (GRAD CERT)													0
	Totals	28	14	6	5	3	3	7	25	33	9	21	26	4

Data Source: NDUS Grads By Major- Minor

Undergraduate Degrees Conferred by 2nd Major

		2005	2006	2007	2008	2009	2010	2011	2012	2013	2014	2015	2016	2017	2018	2019	2020	2021	2022	2023
9.01	Communication (BA)	0	0	1	1	0	0	0	0	0	0	0	1	0	0	0	1	0	0	1
9.0701	Broadcasting (BA)	0	0	0	1	1	1	0	0	0	1	0	1	0	0	1	0	0	0	0
11.1003	Cyber Security (BS)						0	0	0	0	0	0	0	0	0	0	0	0	1	2
13.1202	Elementary Education	2	10	7	6	8	11	12	6	7	3	0	2	3	0	1	2	4	1	1
13.121	Early Childhood Education									0	0	3	0	5	2	0	1	2	0	0
13.1302	Art Education (BSE)	0	0	0	0	1	0	0	0	0	0	1	0	0	1	0	0	0	0	0
13.1303	Business Education	0	0	0	1	0	0	1	0	0	1	0	0	0	0	0	1	0	0	0
13.1305	English Education (BSE)	0	0	0	0	0	0	0	1	0	0	0	0	0	0	0	0	0	1	0
13.1311	Mathematics Education (BSE)	1	0	0	0	0	0	0	0	0	0	1	0	1	0	0	0	0	0	0
13.1314	Physical Education	0	1	0	0	0	0	1	0	4	1	3	0	0	0	0	0	0	0	0
13.1317	Social Science Education (BSE)	0	0	0	1	1	0	0	0	0	0	0	1	0	0	0	0	0	0	0
26.0101	Biology (BA)	0	0	0	1	1	0	0	1	1	3	1	0	2	0	1	0	0	0	0
27.0101	Mathematics (BA)	3	1	2	2	3	1	0	2	0	0	4	0	2	1	2	0	0	0	1
31.0504	Corporate Fitness	0	1	8	3	1	2	2	3	2	0	2	2	0	0	1	2	0	0	0
40.0501	Chemistry (BA)	1	0	0	1	0	0	2	1	0	1	3	1	2	1	0	0	0	0	1
42.0101	Psychology	2	3	4	6	1	1	3	1	3	1	3	1	0	2	0	1	0	1	0
43.0104	Criminal Justice (BS)	0	0	0	1	0	3	0	0	0	0	0	0	0	0	0	0	0	1	1
45.0101	Social Science (BA)	0	0	0	0	0	0	0	0	0	0	0	0	0	0	0	1	0	0	0
45.1101	Sociology (BA)	2	3	5	1	5	3	1	3	2	1	1	0	1	0	0	1	0	1	0
50.0501	Theatre Arts (BA)	0	0	0	0	1	0	1	0	1	1	0	1	0	1	0	0	0	0	0
50.0701	Art (BA)	2	0	0	0	0	0	0	0	1	0	0	0	0	0	0	0	0	0	0
50.0901	Music (BA)	0	3	1	1	0	1	0	0	0	0	0	1	1	0	0	0	0	0	0
51.0201	Communication Disorders								1	0	0	0	0	0	0	3	0	0	1	0
51.1501	Addiction Studies	1	0	0	0	0	0	1	0	0	0	0	0	0	1	0	0	0	0	0
52.0201	Management	4	5	1	4	0	0	13	11	7	6	9	4	4	7	9	7	7	11	6
52.0301	Accounting	0	1	1		0	1	1	0	0	0	1	0	0	1	0	0	2	0	0
52.0799	Entrepreneurship (BS)	0	0	0	0	0	0	0	0	0	0	0	0	0	0	5	4	9	2	0
52.0801	Finance	7	1	3	3	3	14	2	3	4	3	10	1	2	10	7	6	4	3	4
52.0899	Energy Economics and Finance	0	0	0	0	0	0	1	1	1	0	1	0	0	1	0	0	0	0	0
52.1101	International Business	0	0	0	4	19	2	31	29	31	30	22	15	11	8	8	6	11	7	4
52.1201	Management Information Systems	0	0	0	1	1	0	1	0	1	0	0	0	0	1	0	0	1	0	0
52.1401	Marketing	8	9	20	14	22	13	22	25	23	28	19	19	13	13	22	11	13	11	14
13.1001/6	Special Education	0	0	0	0	0	0	1	1	3	1	2	4	2	1	0	1	1	0	0
		33	38	53	52	68	53	96	89	91	81	86	54	49	51	60	45	54	41	35

Data Source: Graduates by Major/Minor- as reported by the Registrar to NDUS.

Undergraduate Degrees Conferred

Undergraduate Degrees	2011	2012	2013	2014	2015	2016	2017	2018	2019	2020	2021	2022	2023
Associate of Arts (AA)	0	0	0	0	0	0	0	0	0	0	0	0	0
Associate of Science (AS)	1	1	1	1	3	2	3	1	0	2	0	2	1
Bachelor of Arts (BA)	90	82	65	102	109	76	97	65	72	65	51	65	57
Bachelor of Applied Science (BAS)	10	6	8	10	6	9	8	5	5	3	6	3	4
Bachelor of Fine Arts (BFA)	2	2	2	2	1	0	1	5	1	1	2	2	1
Bachelor of Individualized Studies (BIS)													2
Bachelor of General Studies (BGS)	22	23	20	19	16	20	24	20	30	26	21	24	21
Bachelor of Science (BS)	274	299	295	302	279	262	249	242	310	249	270	237	225
Bachelor of Science Education (BSE)	118	82	109	90	120	122	120	86	89	85	75	95	98
Bachelor of Science Nursing (BSN)	43	48	63	65	58	73	56	55	50	55	58	58	65
Bachelor of Social Work (BSW)	27	29	31	60	68	46	50	62	50	60	78	45	51
Total	587	572	594	651	660	610	608	541	607	546	561	531	525

Data Source: NDUS Grads by Major Minor Report for academic year- pivoted by academic plan

Undergraduate Degrees Conferred by 1st Major

CIP Code	Program	2013	2014	2015	2016	2017	2018	2019	2020	2021	2022	2023
9.0101	Professional Communication (BA)	0	1	0	4	3	1	2	2	7	9	5
10.9999	Multimedia Studies (BS)	0	0	0	1	0	1	2	0	1	1	0
11.0101	Computer Science (BS)	10	2	4	5	11	13	9	10	11	8	7
13.1001	Special Education (BSE)	9	4	12	11	11	10	5	7	1	13	33
13.1099	Human Services: Intellectual and Developmental Disabilities (AS, BS through 2010)* (BS only 2011 on)	3	3	6	3	6	4	3	4	11	6	2
13.1099	Human Services: Intellectual and Developmental Disabilities (AS)*	1	1	3	0	3	1	0	2	0	2	1
13.1202	Elementary Education (BSE)	47	41	49	49	52	41	37	37	37	38	31
13.1210	Early Childhood Education (BSE)		0	1	0	8	3	2	5	1	9	7
13.1210	Early Childhood Education (BS)		0	0	0	0	0	0	1	10	6	6
13.1302	Art Education (BSE)	3	2	1	3	1	1	1	2	1	2	1
13.1303	Business Education (BSE)	2	4	2	2	2	3	2	2	0	0	2
13.1305	English Education (BSE)	5	2	4	5	5	5	5	6	3	6	3
13.1311	Mathematics Education (BSE)	4	3	5	2	6	4	5	3	2	1	2
13.1312	Music Education (BSE)	2	6	6	5	4	3	5	8	1	5	5
13.1314	Physical Education (BSE)	12	11	17	17	11	6	13	7	13	14	10
13.1316	Earth Science Education (BSE)	0	1	0	0	1	0	0	0	0	1	0
13.1317	Social Science Education (BSE)	0	0	0	1	2	0	4	1	1	0	1
13.1322	Biology Education (BSE)	3	6	3	4	2	7	1	0	1	0	1
13.1323	Chemistry Education (BSE)	0	2	1	0	0	0	1	1	0	0	0
13.1328	History Education (BSE)	3	5	5	9	4	3	6	1	3	5	1
13.133	Foreign Language/Spanish (BSE)	0	3	1	1	1	0	1	0	1	0	0
13.1399	Communication Arts (BSE)	0	0	0	0	0	0	0	0	0	0	0
16.1603	Interpreting and Sign Language Studies (BAS)	0	0	0	0	0	0	3	2	4	2	3
23.0101	English (BA)	4	5	5	5	5	6	6	1	5	3	3
24.0102	General Studies (BGS)	20	19	16	20	24	20	27	26	21	24	21
26.0101	Biology (BA)	7	9	14	14	14	13	15	9	10	20	19
26.1199	Bioinformatics and	1	0	0	1	1	0	0	0	2	2	0
27.0101	Mathematics (BA)	4	4	2	5	10	4	5	2	2	5	2
30.0000	Individualized Studies (BIS)											2
31.0504	Corporate Fitness (BS)	18	13	16	12	15	26	23	16	20	15	18
40.0501	Chemistry (BA)	5	9	7	5	4	2	4	3	3	3	6
40.0601	Geology (BA)	4	5	8	2	6	2	4	4	1	1	2
40.0601	Geology (BS)	0	0	0	0	0	0	0	0	0	3	2
42.0101	Psychology (BA)	10	23	18	7	17	11	11	15	10	10	9
43.0104	Criminal Justice (BS)	36	41	32	26	44	26	34	41	43	33	32
44.0701	Social Work (BSW)	31	60	68	46	49	62	50	60	78	45	51
45.0101	Social Science (BA)	0	0	0	0	0	0	0	0	0	0	0
45.1101	Sociology (BA)	4	6	3	1	7	2	2	3	1	2	0
50.0701	Art (BA)	4	5	10	1	5	5	4	7	1	0	1
50.0701	Art (BFA)	2	2	1	0	1	5	1	1	2	2	1
50.0901	Music (BA)	1	5	4	1	4	2	0	1	2	2	3
50.1002	Arts Administration (BS)	0	0	0	0	0	0	1	1	0	0	0
51.0201	Communication Disorders (BS)	22	41	16	21	9	29	18	13	16	18	25
51.0911	Radiologic Technology (BS)	3	5	2	5	5	4	5	8	3	5	8
51.0913	Athletic Training (BS) (New Program 12/2008)	3	5	4	2	2	3	3	5	2	0	0
51.1005	Medical Laboratory Science (BS)	1	3	2	0	5	5	4	1	3	3	0
51.1501	Addiction Studies (BS)	2	9	11	10	9	5	10	9	3	9	7
51.2314	Excercise Science and Rehabilitation											8
51.3801	Nursing (BSN)	63	65	58	73	56	55	50	54	58	58	65
52.0201	Management (BS)	57	59	49	53	50	56	69	51	43	42	36
52.0299	Applied Management (BAS)*	5	8	4	6	6	3	0	0	0	0	0
52.0301	Accounting (BS)	18	14	21	13	8	20	16	12	12	13	9
52.0799	Entrepreneurship (BS)									3	0	2
52.0801	Finance (BS)	10	10	9	25	13	17	10	11	12	12	11
52.0899	Energy Economics & Finance* (BS)	9	4	10	6	5	6	3	2	1	4	1
52.1101	International Business (BS)	6	8	6	6	5	11	14	3	3	3	2
52.1201	Management Information Systems (BS)	15	9	9	8	13	6	15	10	7	6	8
52.1299	Applied Business Info. Tech. (BAS)*	3	2	2	3	2	1	2	1	2	1	1
52.1401	Marketing (BS)	13	8	14	20	18	11	16	16	17	12	9
54.0101	History (BA)	6	7	3	14	6	6	3	7	8	6	2
		491	560	544	533	551	530	532	494	503	490	487

Data Source: Graduates by Major/Minor- as reported by the Registrar to NDUS