

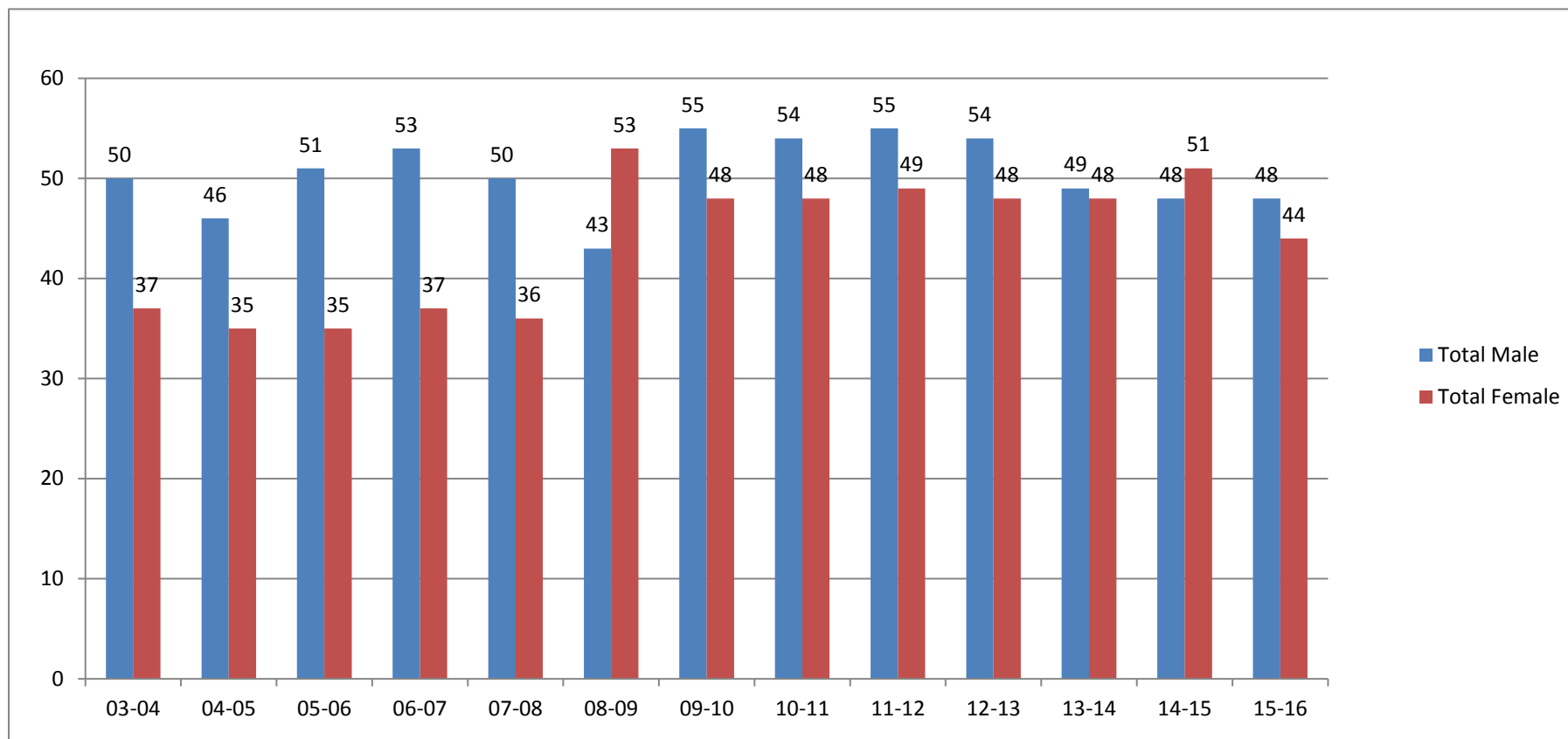
### Tenured Faculty: Rank and Gender

	03-04	04-05	05-06	06-07	07-08	08-09	09-10	10-11	11-12	12-13	13-14	14-15	15-16	16-17	17-18	18-19	19-20
<b>Professor</b>	25	23	28	28	29	28	30	32	34	34	37	40	36	41	36	41	32
Male	19	18	22	23	23	22	24	26	28	27	27	27	24	26	23	25	18
Female	6	5	6	5	6	6	6	6	6	7	10	13	12	15	13	16	14
<b>Associate Professor</b>	35	33	35	36	31	38	39	38	39	36	30	31	28	23	25	25	24
Male	22	20	24	23	20	23	22	19	18	18	13	13	15	10	12	13	12
Female	13	13	11	13	11	15	17	19	21	18	17	18	13	13	13	12	12
<b>Assistant Professor</b>	27	25	23	26	26	30	34	32	31	32	30	28	28	21	19	18	12
Male	9	8	5	7	7	8	9	9	9	9	9	8	9	6	6	7	6
Female	18	17	18	19	19	22	25	23	22	23	21	20	19	15	13	11	6
<b>Total</b>	87	81	86	90	86	96	103	102	104	102	97	99	92	85	80	84	68
<b>Total Male</b>	50	46	51	53	50	53	55	54	55	54	49	48	48	42	41	45	35
<b>Total Female</b>	37	35	35	37	36	43	48	48	49	48	48	51	44	43	39	39	31

Data Source: Human Resources as reported to IPEDS.

Continued--

### Total Tenured Faculty by Year and Gender



Data Resource: Human Resources as reported in IPEDS