

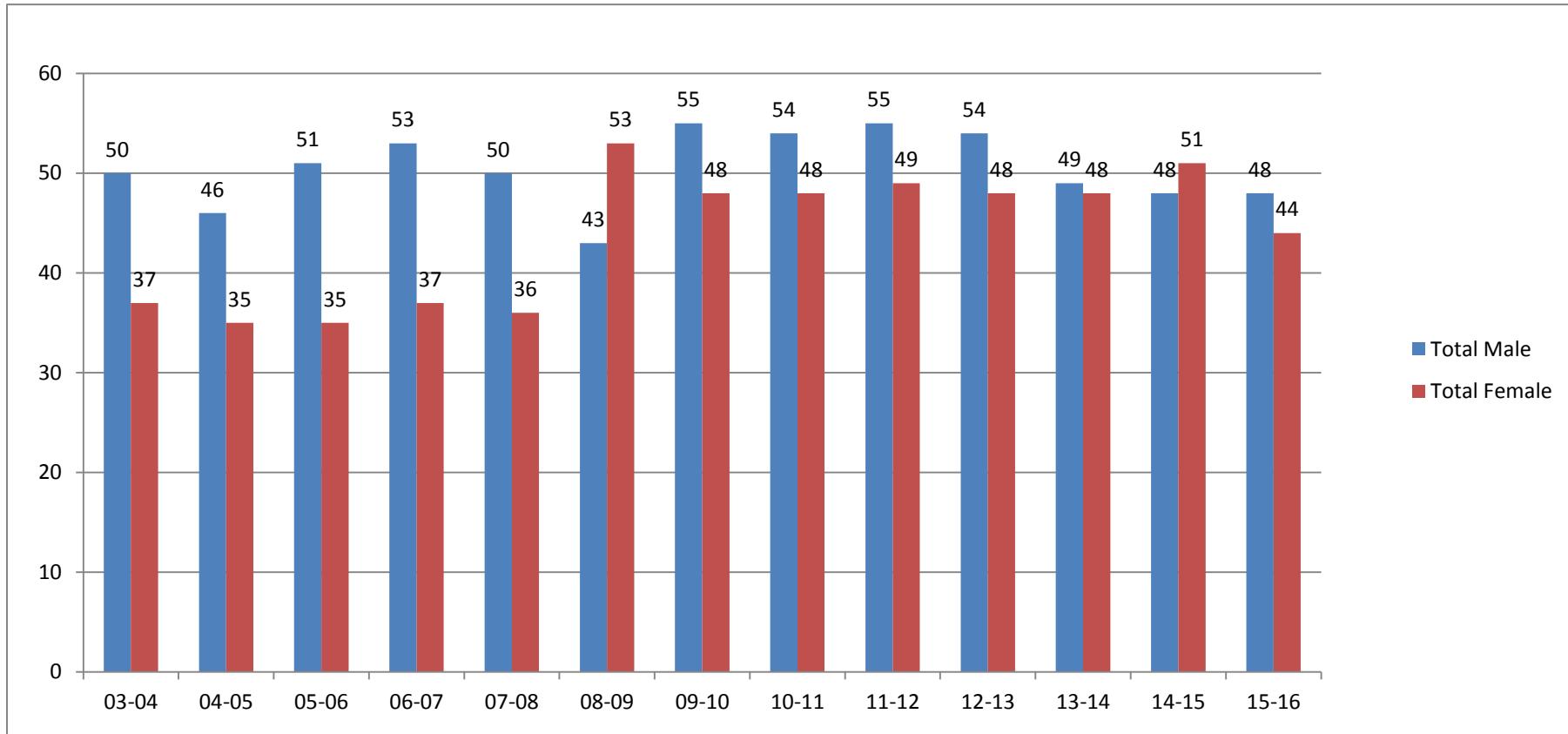
Tenured Faculty: Rank and Gender

	03-04	04-05	05-06	06-07	07-08	08-09	09-10	10-11	11-12	12-13	13-14	14-15	15-16	16-17	17-18	18-19
Professor	25	23	28	28	29	28	30	32	34	34	37	40	36	41	36	41
Male	19	18	22	23	23	22	24	26	28	27	27	27	24	26	23	25
Female	6	5	6	5	6	6	6	6	6	7	10	13	12	15	13	16
Associate Professor	35	33	35	36	31	38	39	38	39	36	30	31	28	23	25	25
Male	22	20	24	23	20	23	22	19	18	18	13	13	15	10	12	13
Female	13	13	11	13	11	15	17	19	21	18	17	18	13	13	13	12
Assistant Professor	27	25	23	26	26	30	34	32	31	32	30	28	28	21	19	18
Male	9	8	5	7	7	8	9	9	9	9	9	8	9	6	6	7
Female	18	17	18	19	19	22	25	23	22	23	21	20	19	15	13	11
Total	87	81	86	90	86	96	103	102	104	102	97	99	92	85	80	84
Total Male	50	46	51	53	50	53	55	54	55	54	49	48	48	42	41	45
Total Female	37	35	35	37	36	43	48	48	49	48	48	51	44	43	39	39

Data Source: Human Resources as reported to IPEDS.

Continued--

Total Tenured Faculty by Year and Gender



Data Resource: Human Resources as reported in IPEDS