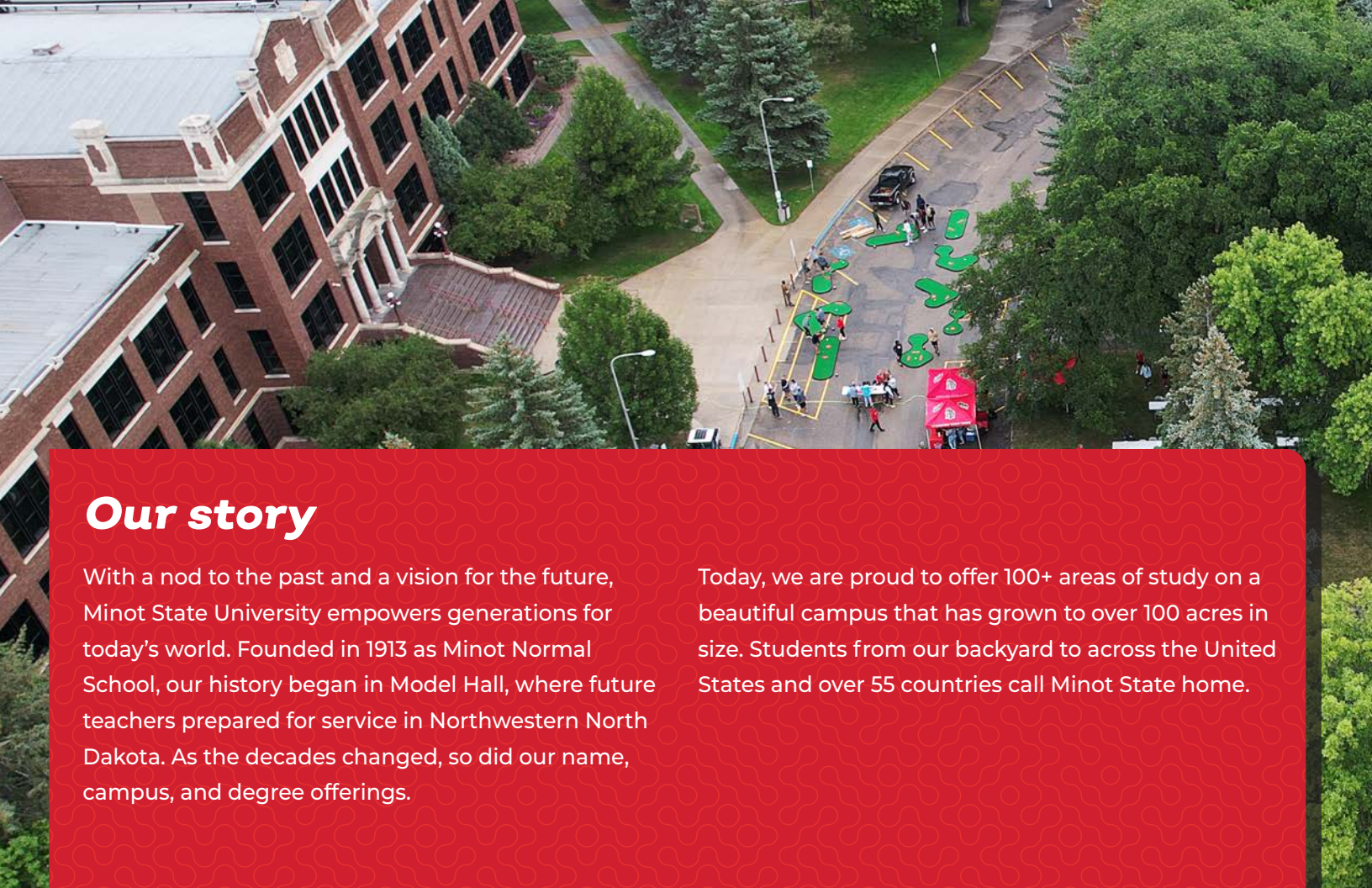





MINOT
STATE
UNIVERSITY

Be seen. Be heard. BE YOU.



Our story

With a nod to the past and a vision for the future, Minot State University empowers generations for today's world. Founded in 1913 as Minot Normal School, our history began in Model Hall, where future teachers prepared for service in Northwestern North Dakota. As the decades changed, so did our name, campus, and degree offerings.

Today, we are proud to offer 100+ areas of study on a beautiful campus that has grown to over 100 acres in size. Students from our backyard to across the United States and over 55 countries call Minot State home.



Our community

Our welcoming, safe, and vibrant campus is located in Minot, the fourth largest city in North Dakota. You will always have something to do and explore! Discover the magic at **VisitMinot.org**.



Minot population:

47,000+



1,000+

community events each year



Your future starts here »





Fast Facts



11:1

Student-to-faculty
ratio



\$4 million+

Scholarships and aid
awarded annually



for ALL students

Majors and Programs

Department of Fine and Performing Arts

Art (BA)

*Options: Art History; Ceramics;
Drawing; Graphic Design; Painting;
Photography; Printmaking; Sculpture;
Traditional Arts*

Art Education (BSEd)

Fine Arts (BFA)

Multimedia Communications (BS)

Museum Studies (BS)

Music (BS)

Music Education (BSEd)

Professional Communication (BA)

*Option: Journalism; Production;
Public Relations; Social Media;
Speech Communication; Sports
Communication*

Department of Humanities, Social Sciences, and Interdisciplinary Studies

English (BA)

English Education (BSEd)

General Studies (BGS) ■

History (BA)

History Education (BSEd)

Individualized Studies (BIS)

Social and Data Science (BA)

Social Science Education (BSEd)

Sociology (BA)

Department of Business

Accounting (BS)

Business Education (BSEd)

Entrepreneurship (BS) ■

Finance (BS)

International Business (BS) ■

Management (BS) ■

Management Information Systems (BS) ■

Marketing (BS) ■

Department of Math, Data, and Technology

Computer Science (BS) ■

Cybersecurity and Operations (BS) ■

Data Science (BS) ■

Mathematics (BA)

Mathematics Education (BSEd)

Department of Behavioral Sciences and Criminal Justice

Addiction Studies (BS)

Criminal Justice (BS) ■ ●

Psychology (BA)

Social Work (BSW) ● ▲

Department of Education and Inclusive Services

Early Childhood Education (BSEd) (BS) ■

Options: Teaching; Non-teaching

Elementary Education (BSEd)

Human Services: Intellectual and
Developmental Disabilities (BS) ■

Special Education (BSEd) ■

Department of Communication Sciences and Disorders

Communication Sciences and Disorders (BS)

Department of Nursing

Nursing (BSN) ■

Department of Science

Bioinformatics and Computational Biology (BS)

Biology (BA)

Chemistry (BA, BS)

Composite Science (BSEd)

Corporate Fitness and Wellness Management (BS)

Exercise Science and Rehabilitation (BS)

Geology (BA, BS)

Medical Laboratory Science (BS)

Physical Education (BSEd)

Radiologic Technology (BS)

*Options: Radiologic Technology;
Diagnostic Sonography*

Pre-Professional Program

Pre-Chiropractic

Pre-Dental Hygiene

Pre-Dentistry

Pre-Law

Pre-Medicine

Pre-Mortuary Science

Pre-Occupational Therapy

Pre-Optometry

Pre-Pharmacy

Pre-Physical Therapy

Pre-Physician Assistant

Pre-Seminary

Pre-Veterinary Medicine

Pre-Wildlife Studies

■ = Also available online

● = Also offered at Bismarck State College

▲ = Also offered at North Dakota State University

Minot State University is accredited by the Higher Learning Commission (hlcommission.org), a regional accreditation agency recognized by the U.S. Department of Education.

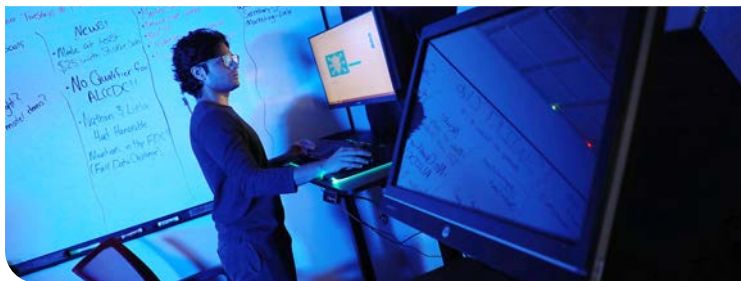


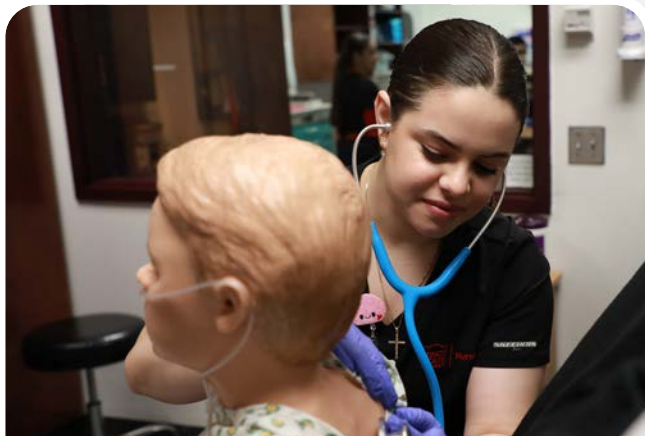
Learn more at
» AskMSU.com/programs

Program spotlight: Cybersecurity and Operations

We're really good at what we do. Just ask the National Security Agency (NSA) and the Department of Homeland Security (DHS). Designated as a Center of Academic Excellence in Cyber Defense (CAE-CD) by the NSA and DHS, we continue to expand our degree offerings and your opportunities to become the best in the business.

1 of 3 National Centers of Academic
Excellence in Cybersecurity
in ND, SD, MT, and WY





Program spotlight: **Nursing**

We know that nursing is more than just a career, it's a passion. At Minot State, you'll get hands-on experience at a Level II Trauma Center coupled with rural healthcare systems while learning from devoted experts who honed their skills on the floor, in the clinic, and on the job.

Minot State nursing grads consistently achieve a
100% pass rate on the NCLEX-RN
(National Council Licensure Exam)

Elevate your experience

At Minot State, you'll join a community that values inclusivity, fosters leadership, and builds each other up.

First-Year Experience (FYE)

First-Year Experience classes help you transition to university life, engage with campus and the community, and create connections with other new students.

» [AskMSU.com/fye](https://askmsu.com/fye)

FYE Learning Community spotlight:

Go take a hike!

Embrace your nature-loving side in the classroom and outdoors — including an eight-day camping and hiking trip in October. See places like Arches National Parks and Dinosaur National Monument from a whole new perspective.



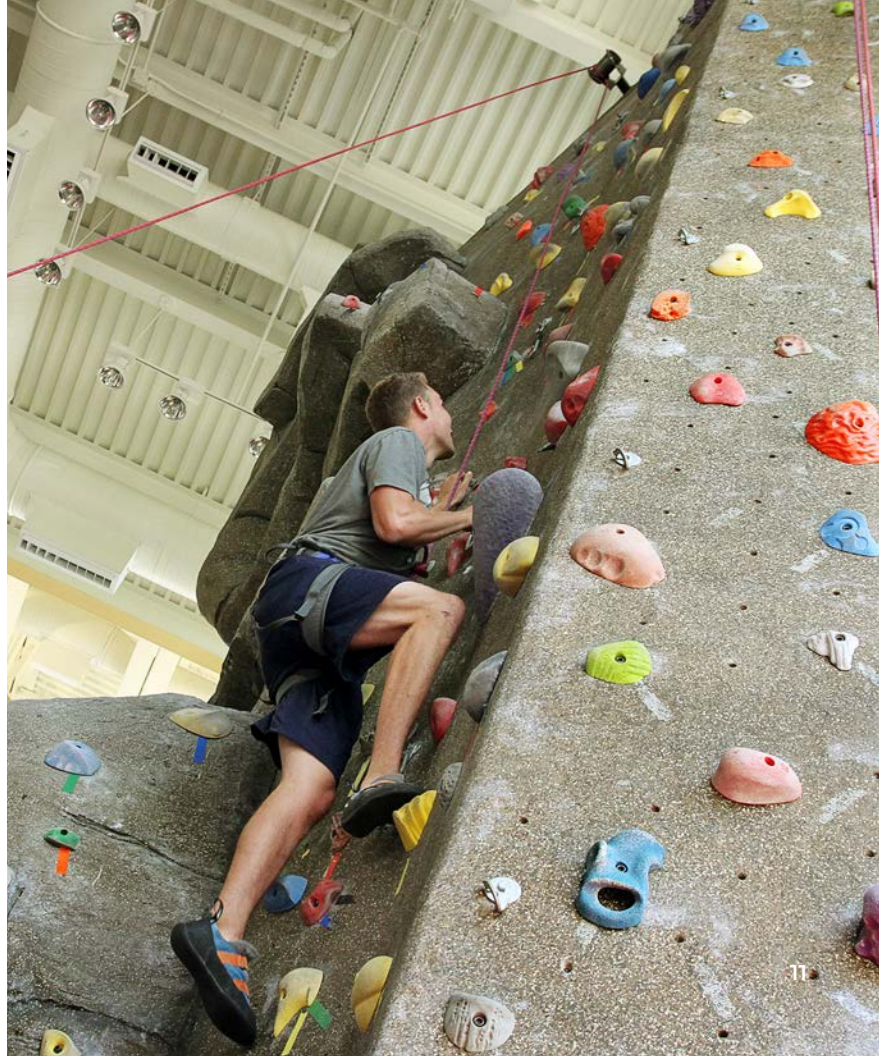
Wellness Center

Maximize your potential and prioritize your wellbeing. From exercise equipment and group fitness classes to rock climbing and outdoor recreation equipment, your exercise opportunities are boundless.



Student Health

Our Student Health Clinic and Counseling Services has the team and resources to help you feel your best.



Where learning meets play



50+ student clubs
and organizations



Intramurals: 10+ teams
500+ participants



100+
FREE MSU Life
events each year





Cheer on your NCAA DII Beavers

Minot State has sports for every season. Show your school spirit — get your red gear on and head to the game!

Men's sports

Baseball
Basketball
Cheerleading (Club)
Cross Country
Football
Golf
Hockey (ACHA)
Soccer (Club)
Track & Field
Wrestling

Women's sports

Basketball
Cheerleading (Club)
Cross Country
Golf
Hockey (ACHA)
Soccer
Softball
Track & Field
Volleyball
Wrestling

Find game schedules at
» MSUBeavers.com

Live on campus »



Our residence halls offer diversity and community in comfortable living environments. Your classes, meals, friends, and events are right outside your door!

Safety

- Residence halls secured 24/7
- Residence Life staff on call around the clock
- Security cameras throughout campus

Dining

Enjoy a variety of cuisine choices at the Beaver Creek Café. Head to the Beaver Dam to grab Starbucks before class!





Total annual estimated costs 2024-2025*



\$8,701

Tuition and fees

+



\$7,584

Room and meals

TOTAL

\$16,285

**Costs subject to change.*

Estimate your costs at
AskMSU.com/cost

Education that's worth it

High School GPA (unweighted)	Scholarship Award
3.9+	\$10,000 \$2,500/year for a max. of 4 years
3.7 – 3.89	\$7,500 \$1,875/year for a max. of 4 years
3.5 – 3.69	\$5,000 \$1,250/year for a max. of 4 years
3.0 – 3.49	\$2,500 \$625/year for a max. of 4 years

Award programs are subject to change without notice and are subject to the availability of funds.

Additional scholarship opportunities

Complete your general scholarship application by Feb. 15 to learn what other scholarships and waivers you might qualify to receive.
Apply at **AskMSU.com/scholarships**.

Academic Excellence Scholarship

Freshmen admitted by Feb. 15 and meeting academic standards are eligible for these awards.



90% of students
receive scholarships
and/or grants



\$8,617
Avg. annual financial
aid per student

Financial aid

The Free Application for Federal Student Aid (FAFSA) determines your eligibility for federal grants, work study, loan programs, and N.D. State Grants. **The priority funding deadline is April 15.**
Apply at **StudentAid.gov**.



Where futures take shape

96% of recent graduates are employed or are pursuing advanced degrees.

Career services

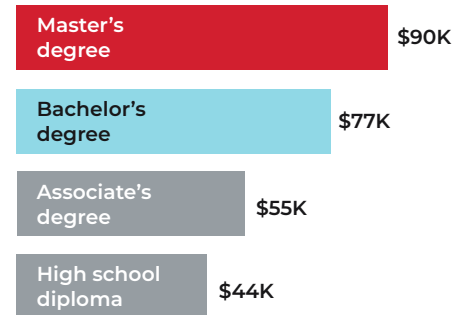
We'll help you prepare, plan, and pursue your career goals. From resume assistance, job fairs, and internships, we're here to support your goals as you forge your path to success.



Did you know?

The higher your education, the higher your earning potential!

Median usual annual earnings*



**U.S. Bureau of Labor Statistics, 2023*

VISIT

Attend an admissions event, take a tour, or meet with us virtually.

FACE-TO-FACE

Campus tours

Monday – Friday at 10 A.M. and 1 P.M.

Select Saturdays at 10 A.M.:

Sept. 14, 2024

Jan. 25, 2025

Oct. 5, 2024

March 15, 2025

Nov. 16, 2024

April 12, 2025

Dec. 14, 2024

May 3, 2025

Be a Beaver Days

Oct. 17 and 18, 2024

Meet Minot State

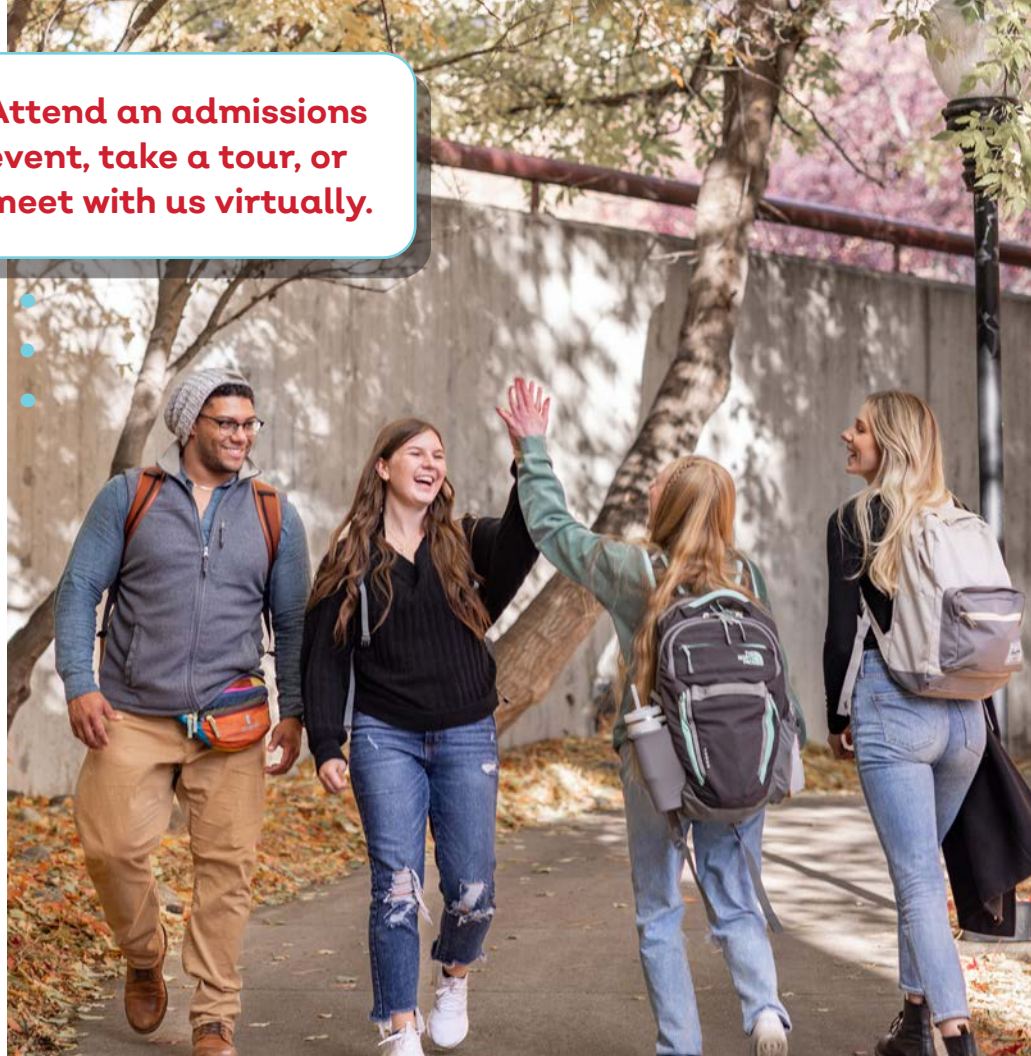
Feb. 22, 2025

VIRTUAL

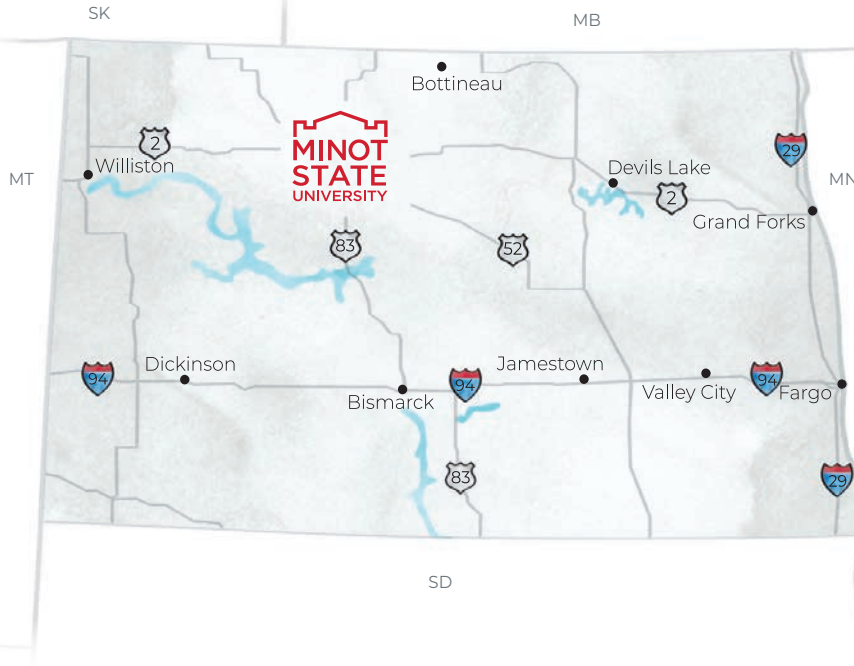
Virtual admissions appointments

Monday – Friday from 9 A.M. – 3 P.M.

Schedule your campus visit at
[AskMSU.com/visit](https://askmsu.com/visit)



We can't wait to meet you!



Travel time (in hours) to Minot State:



Williston, ND	2
Bismarck, ND	2
Fargo, ND	4.5
Dickinson, ND	3
Grand Forks, ND	3.25
Glendive, MT	4
Havre, MT	7
Rapid City, SD	6.5
Thief River Falls, MN ..	4.25
Mpls.-St. Paul, MN	7.5
Regina, SK	4.25
Yorkton, SK	4.25
Winnipeg, MB	5
Brandon, MB	3



Williston, ND	2.5
Fargo, ND	5
Mpls.-St. Paul, MN	11
Havre, MT	6.5



Denver, CO	1.75
Mesa, AZ	2.75
Mpls.-St. Paul, MN	1.5
Las Vegas, NV	2.5

500 University Ave. W, Minot, ND 58707 | 701-858-3350/800-777-0750 ext. 3350 | [AskMSU.com](https://www.askmsu.com)

APPLY

1 »

Complete the Application for Admission

- \$35 application fee

2 »

Send documents

- Official high school transcript
- Official college transcripts

3 »

File for FAFSA and scholarships

- Optional: Send ACT or SAT results

AskMSU.com/apply »

