



Connor Donovan and Jenny Castro rehearse for their upcoming performance in “Every Christmas Story Ever Told (And Then Some!).” The show runs Dec. 7-10 in Aleshire Theater.

Photo by Charles Wollschlager

## Campus Players to present annual Christmas show

By Charles Wollschlager  
 Assistant Editor

It’s that time of year again, time for the Campus Players’ annual Christmas show! Every year the troupe decides on what sort of play to present for the holiday season. Last year they took a break from Christmas-themed shows with their performance of “Alice in Wonderland.”

This year, the MSU troupe will perform “Every Christmas Story Ever

Told (And Then Some!)” at 7:30 p.m. Wednesday through Saturday, Dec. 7-10, in Aleshire Theater.

Written by John K. Alvarez, Michael Carleton and James FitzGerald, the story is about three actors who are giving a performance of Charles Dickens’ “A Christmas Carol,” something they can’t stand going through again. So instead, the actors decide to put on their own show, combining every

See Show — Page 5

## Freezin’ for a Reason supports the homeless



Photo by En Chze Koh (Ariel)

MSU students (from the left) Hilary Waite and Akesha Juarez and Juarez’s son, Teryn Juarez, hold signs at Marketplace Foods parking lot on 20th Avenue. Students stood outside on Nov. 19 to raise awareness of homelessness and hunger, as well as to collect monetary donations and nonperishable food items. MSU’s Student Social Work Organization sponsored the event.

## KMSU Auction to air live on Dec. 8

By Ton Yamashita  
 Assistant Editor

The Minot State University Broadcasting Program will host its 18th-annual KMSU Auction Dec. 8 live on Midco and SRT Channel 19. It will also be streamed live on [kmsuauction.com](http://kmsuauction.com). The preshow begins at 5 p.m. and the auction starts at 6:30 p.m.

Students in Comm 354, Special Events Planning, have assembled a wide



variety of prize packages. Viewers can call in and place a bid, with the highest bid winning.

See Auction — Page 11



MSU Social Work senior Kendra Bartel accepts food and monetary donations for the homeless at the Donation Station.

Photo by En Chze Koh (Ariel)

# News in Brief

## Campus Players participate in

### Dressembler fundraiser

Members of Minot State University's Campus Players invite all students, faculty and staff, along with the community, to participate in Dressembler during the month of December.

Dressembler, a national collaborative movement, leverages fashion and creativity to restore dignity to all women. Many women and children are held in modern-day slavery, including prostitution.

To donate to the cause, visit [support.dressemblerfoundation.org/campusplayers](http://support.dressemblerfoundation.org/campusplayers). Participants may also raise awareness by wearing a dress each day in December.

According to the movements website, [dressembler.org](http://dressembler.org), Dressembler uses fashion to advocate for women who've been exploited. As women take on the creative challenge of wearing a dress for the 31 days of December,

they are advocating for the inherent dignity of all women.

## Shane Keller to present at Math Talk today

Today at 5 p.m. in Model 330, Shane Keller, junior mathematics major, will give a Math Talk, "Pounce into the world of polynomials," about two special types of polynomials -Bernoulli and Euler. These polynomials have interesting properties and numbers associated with them. The Bernoulli and Euler numbers occur in various areas throughout the world of math. Keller will show how these numbers are used as computational tools in mathematics. Everyone invited.

## MSU hosts Late Night Finals Breakfast

MSU students have a long week of finals ahead, so MSU Life invites students to take a little study break

and drop in for some late-night breakfast in the Beaver Creek Café on Monday, Dec. 12, from 9 to 10 p.m. MSU student I.D. required.

## Creative Social Hour pop-up shop tomorrow

The Creative Social Hour is having its first pop-up shop Friday in the Beaver Dam, from 11 a.m. to 5 p.m. Shop and support local artists. It will be a fun shopping experience filled with creative talk, performances and live painting.

Goods will be sold by Tori Dany Designs, MSU ceramics department, Designs by Eyeiessa Darville, Viishart Syd's Art, Home Goods by Katie Wiggett, Brenna Heupel, Polish TBH by Christian Marcelletta and Sallie Mitchell. Guests include Keith Ailes, Roxi Mathis Art and Justin Stevenson.

Creative Social Hour is a networking group/design hub to

bring artists and entrepreneurs of all kinds together in one place.

For more information, contact [connect@toridanydesigns.com](mailto:connect@toridanydesigns.com).

## 'Messiah' performance Sunday at MSU

The Heritage Singers, Voices of Note, MSU Concert Choir and area community members will perform Handel's "Messiah," one of the longest traditions at Minot State University, on Sunday at 4 p.m. in Ann Nicole Nelson Hall. The orchestra is comprised of Minot Symphony Orchestra members and community musicians. Carlos Vieira, MSU choral director, will conduct the concert.

The concert is free of charge, but a freewill offering will support the Joseph Hegstad and John Strohm Memorial Scholarship fund, which funds voice students at Minot State University. The event is open to the public.

## MSU's SNDU and SCEC sponsor a winter gear drive

The Minot State University Chapter of Students of North Dakota United and the Student Council for Exceptional Children organized a winter gear drive to provide Minot Public Schools students in need with winter clothing.

To participate, drop off new or kindly used hats, gloves, scarfs or jackets at a drop-off spot in Swain 214 or on the first floors of Old Main and Memorial. This is a quick and easy way to contribute to the community this holiday season. The winter gear drive runs through the last Friday in January.

For more information, contact Dan Conn, SNDU co-sponsor, at [daniel.conn@minotstateu.edu](mailto:daniel.conn@minotstateu.edu), Joe Zajdel, SNDU co-sponsor, at [joseph.zajdel@minotstateu.edu](mailto:joseph.zajdel@minotstateu.edu), or Holly Pederson, SCEC sponsor, at [holly.pederson@minotstateu.edu](mailto:holly.pederson@minotstateu.edu).

## MSU and LRSC partner to offer new degree

Minot State University partnered with Lake Region State College and the North Dakota School for the Deaf/Resource Center to offer a degree in interpreting and sign language studies.

Students now have the opportunity to complete an associate degree in American Sign Language and interpreting studies with LRSC, and then transfer to Minot State to complete the bachelor's degree in interpreting and sign language studies. Students can take the entire program from either campus or from a remote location, where courses are delivered via interactive live video technologies.

Holly Pedersen, Department of Special Education chair at

MSU, believes the new program will benefit students.

"Our program allows greater flexibility for students to continue their education in the field of interpreting because they can access high-quality instruction from rural or remote areas," Pedersen said in an MSU press release.

The N.D. School for the Deaf/Resource Center for Deaf/Hard of Hearing, located in Devils Lake, provides support to both LRSC and MSU through consultation and practical opportunities.

A grant from the Bush Foundation and a match from the Higher Ed Challenge Fund will assist in the development of the program.

## MSU prepares for new strategic plan

By Alexis Arthur  
Comm 281

Minot State University is updating its strategic plan. "Empowering Generations" will represent the campus for the next five to seven years, replacing the current "Vision 2014" plan.

"There's a new mission statement, there's a new vision statement and then there are these six goals," Steven Shirley, MSU president said. "The six goals are really the meat and potatoes of the strategic plan. Right now these are just words on a paper; now we're in the phase of making these actionable items."

The six goals are:

- Meet the educational needs of the local, regional, national and global communities.

- Recruit, retain and value well-qualified student, faculty and staff success.

- Create an institutional environment that supports student, faculty,

and staff success.

- Promote and support the well-being of students, faculty and staff, enabling them to address challenges across generations.

- Foster and grow collaborative partnerships locally, regionally, nationally and globally.

- Promote and recognize commitment to public service.

The new strategic plan process began in 2015 with teams of faculty, staff and students. The teams looked at "Vision 2013," the university's last strategic plan, which was started in 2007 and focused on our location. Its goals included things such as updating facilities. The teams realized that Minot State had accomplished those goals. Now, the university is focusing on the academic experience.

The teams decided on "Empowering Generations" as a title because Minot State has been here for a generation.

"We're going to be here for generations," Shirley said. "This has been an opportunity for us as a campus to really look ourselves in the mirror, and say where do we want to be focusing, where should our focus ultimately be? We have to really think about what are we going to serve and who are we going to serve."

Minot State University reconstructed the plan to reach more audiences to help benefit our students and the campus as a whole.

"It becomes important," Shirley said, "when we work with partners that hire our students, future employers of our students, supporters that support the university and those who support our scholarship programs."

With the strategic plan close to being completed, the university's next step is to share it with the campus and the community.

# Voices on Campus

“What do you expect of Trump’s administration in the next 4 years?”

Jerusalem Tukura  
Editor



Royce Brown  
*Music*

“I think he’s gonna be fairly different than people expect. He’s probably going to not be as terrible as the left expects him to be, but he’s not gonna carry through with everything he’s promised to the right. Most of the people in rural American voted for him because of their issues and the issues they seem to be facing, and that has caused a lot of struggle for people in the larger, more populated cities with more diverse populations who believe Trump isn’t speaking to them. But in reality, I don’t think Trump has really told us what his plans are for his presidency, so that will be interesting to see what he does.”



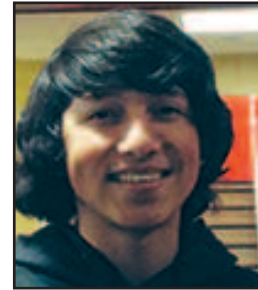
Summer Clayton  
*Corporate Fitness*

“He has back-pedaled on so many of his big talking points that it makes it difficult to say this is what is going to happen. I know what I want to see. I want to see him formally apologize to people who he has marginalized. I want to see him speak out against some of those groups that are hate groups in his name. I want to see him speak out against those groups. But as of now, I don’t know what to expect”



Amina Greenaway  
*Biology*

“I personally do not like Trump’s stand on a lot of things. I am a black woman in America, and I personally find that he is a bit sexist as well as he is a tad bit racist. However, I mean we made out his presidency to be a big thing, but he might not be that bad as a president. We should just give him a chance, I mean, he’s already there. So, it’s time to just let it play out and see where it goes.”



Gustavo Gontiz  
*Social Work*

“I’m pretty sure he’s gonna get impeached because he is who he is.”



Erin Kampen  
*Management*

“I’m really not expecting anything good from those two yahoos. I’m really not! Their policies are terrifying, and some of the things they’ve said they want to do terrify me as a woman and as part of the LGBTQ community.”



Casara Tessendorf  
*Accounting*

“I think he’s actually gonna get what he wants to get done. I think it’s gonna be a battle and he’ll try. I think a lot of the stuff he said, he’ll go back on. He already has. He has changed his mind and said that he was gonna do things differently than he previously had said. So I don’t think he’s gonna get as much done as he said he is, and I think he’s gonna change his mind on a lot of stuff.”

## LIBRARY HOURS

For changes and additional hours during finals, check the Library hours at 858-3200

**MDN Readers' Choice**

**READERS' CHOICE AWARD WINNER**  
**BEST FAMILY RESTAURANT**  
FOR 2 YEARS IN A ROW

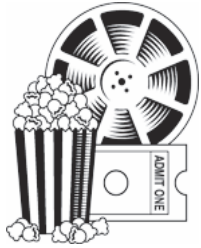





**HOMESTEADERS RESTAURANT**  
MINOT, NORTH DAKOTA

**BREAKFAST SERVED ALL DAY**

2501 ELK DRIVE - MINOT  
701-838-2274  
M-S 6:30AM - 9PM SUN 7AM - 9PM



## On Movies



*Upcoming films  
and my farewell*

by Alex Nelson  
Staff Writer

Hello students and staff of MSU.

Right now there are some interesting choices of films that include “Doctor Strange,” “Hacksaw Ridge” and “Fantastic Beasts and Where to Find Them.” However, they will soon be joined by some upcoming films that may catch your eye.

Disney released its animated musical fantasy, “Moana,” last week. Dwayne Johnson and Auli’i Cravalho star as a demigod and a princess who must work together to save their people from a powerful threat.

On Dec. 16, may the force be with you as Felicity Jones, Diego Luna, Donnie Yen, Alan Tudyk and Forrest Whitaker star as rebels attempting to steal the plans from the dreaded Death Star in “Rogue One: A Star Wars Story.”

March 10, 2017, something ancient has awakened as Tom Hiddleston, Brie Larson, Samuel L. Jackson and John Goodman meet the eighth wonder of the world on “Kong: Skull Island.”

Next year will also bring us the live-action version of the classic animated film, “Beauty

and the Beast” due out March 17 starring Emma Watson, Dan Stevens and Luke Evans.

On May 5, Chris Pratt, Zoe Saldana, Dave Bautista, Bradley Cooper and Vin Diesel return in the “Guardians of the Galaxy Vol 2.”

On June 2, Gal Gadot and Chris Pine star in “Wonder Woman,” which shows the origins of the well-known character. It will tie in with “Justice League,” due out next fall featuring Ben Affleck, Henry Cavill, Gal Gadot, Ezra Miller, Jason Momoa and Ray Fisher as Batman, Superman, Wonder Woman, The Flash, Aquaman and Cyborg as they band together to face a deadly threat.

I am sad to say that this will be my last review. I have had fun over these past few years writing film reviews for the Red and Green. I want to thank the staff of the Red and Green for the support and kindness they have given me over the years.

I also want to thank you fellow students and readers. I hope that this semester was kind to you, and I hope many of you will finish strong and have good fulfilling lives.

I hope to see you at the movies.



## Between the Lines

*News in the age of misinformation*

By Dan Fagan  
Staff Writer

The World Wide Web ushered in the era of information. Anyone with a computer and an Internet connection has endless volumes of information at their disposal. In many ways this has had a positive impact on our world, equalizing the availability of information, making for a more informed populace.

However, these floods of information come with a caveat — readers beware of what you believe. The rise of fake news on social media sites and sham Web pages is alarming to those people who rely on the Web for their news. This trend suggests a new era, the age of misinformation.

According to the Pew Research Center, nearly 40 percent of adults get their news online. For those who rely on the almighty Web for precious information, there are

three things to do to safeguard against the scourge of misinformation.

First, know the source. Don’t believe something just because it’s on the Internet. Anyone can fabricate a news story. Be sure to read up on the website and the author to make sure they are legitimate.

In a recent article in The Washington Post, news hoaxer Paul Horner explained why he is able to dupe people into believing his contrived news stories.

“Honestly, people are definitely dumber. They just keep passing stuff around. Nobody fact-checks anything anymore ... It’s real scary. I’ve never seen anything like it,” Horner said.

Hoax artists like Horner are able to make money by posting ads on their blogs or Web pages, which essentially incentivizes fake news. While many people read faux news for entertainment, there are those

who view it as credible. Don’t fall for this trap; know the source.

Second, check facts. No single political ideology has a monopoly on the truth. There are sources that lean left and others that lean right. Regardless of your point of view, it is often helpful to compare multiple news sources. Doing so can contribute to a more intricate and nuanced view on things.

Third, look for news that informs, rather than affirms, what you already believe. Imagine a world where liberals watched Fox News on a regular basis, and conservatives read Mother Jones. Sometimes it takes hearing both sides to get to the truth of the matter.

Anyone who watches the nightly news can see we are living in divisive times. Now is not the time to attack or belittle those who hold opposing views. Now is the time to truly listen to each other.

## Sexual Health: Chlamydia

*Have you been affected? Let’s talk about sexual health*

By Samantha Yatzeck  
Nursing Major

In 2014, over 1.4 million cases of chlamydia were reported to the Center for Disease Control and Prevention (CDC), making it the highest recorded sexually transmitted disease in the United States. According to the CDC, almost half of

the 20 million new sexually transmitted diseases diagnosed each year were young adults ages 15–24 years old, with the majority of the population involving college students nationwide.

**What is chlamydia and what are the symptoms?**

Chlamydia is a sexually transmit-

ted disease caused by a bacteria that is passed during sexual contact. It affects both women and men, and is often referred to as the “silent epidemic” because it generally goes undetected since most people who contract the disease have no symptoms. If symptoms do occur, they

**See Chlamydia — Page 5**

## Red & Green

152 Administration Building  
Minot State University  
500 University Ave. W  
Minot, ND 58707

Phone: 858-3354

E-mail: redgreen@minotstateu.edu

ONLINE: MinotStateU.edu/redgreen

Adviser: Frank McCahill

### EDITOR

Jerusalem Tukura

### ASSISTANT EDITORS

Charles Wollschlager

Ton Yamashita

### ONLINE EDITOR

Josh Jones

### CIRCULATION

Stephanie Awo-osagie

**Letter Policy:** Letters to the editor must bear the writer’s name, e-mail address and telephone number. Students must include year in school and major. Only letters from students, faculty or staff will be published. We will not print unsigned letters, and we reserve the right to edit all letters for factors such as clarity, punctuation, spelling and length. We reserve the right to refuse to print letters we consider libelous, superfluous or ridiculous. Please submit all letters before noon on the Thursday prior to publication. Students are limited to four letters for publication per semester. Letters may be e-mailed to redgreen@minotstateu.edu.

**Views** expressed by this publication are not necessarily those of the university, its administration, faculty or student body.

Red & Green is printed at Minot Daily News, Minot, N.D.

### ... Chlamydia continued from page 4

may not appear for several weeks after being infected. Men who experience symptoms may experience a burning sensation when urinating, discharge from the penis, and swelling or pain in one or both testicles. Symptoms that affect women include a burning sensation when urinating, abnormal vaginal discharge, and bleeding between menstrual periods.

### How is chlamydia tested and how is it treated?

First, it is important to get tested on a regular basis if an individual is sexually active, or has multiple sexual partners. If an individual decides to get tested, the physician may perform the exam by swabbing the vagina of a female, or requiring the female/male to provide a urine sample for laboratory testing. If a person tests positive, their physician will prescribe an antibiotic medication to cure the infection. It is then recommended to have a follow up test to ensure that the medication was effective in eliminating the disease.

### How is chlamydia prevented?

First and foremost, the only 100% way to avoid contracting chlamydia is abstinence. However, if an individual is sexually active, one can reduce their chances of getting chlamydia by using latex condoms every time they have sex. Also, if a person is involved in a mutually monogamous relationship, they are less likely to acquire the disease.

### Why is it important to get tested?

If chlamydia is left untreated, it may lead to serious health problems and may cause permanent damage to the body. Studies have shown that the disease can spread to a woman's uterus and fallopian tubes, which can negatively affect a woman's reproductive system. This can lead to a higher chance of ectopic pregnancies (where the fertilized egg implants itself outside of the uterus) which may be life threatening, and may lead to pelvic inflammatory disease. A woman may also experience trouble conceiving later in life, and there is even a possibility of infertility.

If chlamydia is left untreated in men, it can cause a condition called epididymitis (inflammation of the

tube at the back of the testicle that stores and carries sperm) potentially leading to sterility or inability to conceive later in life. A male may also develop reactive arthritis, which is a disabling condition that causes a variety of conditions including pain and swelling in the joints.

### Where to get tested?

If an individual decides to be tested for chlamydia or other sexually transmitted diseases, they can make an appointment at the Student Health Center at Minot State University, First District Health Unit, or may request to see their primary care provider.

### Contact Information:

First District Health Unit Address:  
801 11th Ave. SW  
Minot, N.D. 58701  
Phone: (701) 852-1376  
Student Health Center  
Address: 500 University Ave. W.  
Lura Manor, South Entrance Minot,  
N.D. 58707  
Phone: (701) 858-3371

### Conclusion

In conclusion, chlamydia has been on the rise in recent years among college students in the United States. It is important that young adults be aware of common sexually transmitted diseases, and more importantly, to be tested at least on an annual basis, even if there are no symptoms present. Keep yourself healthy, stay safe.

Do your part, get tested to stop the epidemic!

### ... Show continued from page 1

Christmas story they know, including holiday traditions from around the world, as well as seasonal icons from ancient times to today's pop culture, not to mention every carol ever sung

The play is small, both in set design and cast. Three actors, Connor Donovan, Jenny Castro and Jenny Filler, comprise the entire cast, but organizers insist it is guaranteed to bring many laughs and much holiday cheer to the audience.

Eric Fetske, this year's director, is a theatre arts major in his senior year. He has been involved with Campus Players since he transferred from California last year.

"As an improviser, a performer that works in the improvisation acting technique," Fetske said, "I think that the show is hilarious, and I hope that the audience takes it the same way. There will also be a bit of audience participation in the show, which will be a lot of fun for the audience, as well."

Admission is \$6 for adults 18 and up; \$5 for seniors, MSU students and children. Because the production is a Campus Players fundraiser, no MSU discounts will be given. For reservations, call the MSU box office at 701-858-3172. The show is rated PG13 for some mild adult language and content.



### CLUES ACROSS

1. No (Scottish)
4. Heroic tales
9. A way to tend
14. Not or
15. Where rockers play
16. Dutch name for Ypres
17. Ingested
18. A resident of California
20. Unfounded rumor
22. Oats
23. Type of women's coat
24. Life forms
28. Every
29. Alternating current
30. Withered
31. "Gymnopedies" composer
33. Plate glasses
37. Muscial artist \_\_ DeBarge
38. Before
39. Arrange in steps of size
41. Electron cloud model
42. Morning
43. Leonard \_\_, famed Swiss mathematician
44. Capital city of Buenos Aires province
46. Snouts
49. Of I
50. Swiss river
51. Perplexes
55. Made angry
58. Precious stone
59. Type of envelope
60. One who believes in reason and knowledge
64. Monitors brain activity (abbr.)
65. Get \_\_\_ of
66. Actress Zellweger
67. Spinal muscular atrophy (abbr.)
68. "Inferno" author
69. Puts together in time
70. Silvery-white metal

### CLUES DOWN

1. Civil Rights group
2. Early Slavic society
3. Mammals that lack incisors and canines
4. Blasphemy
5. Israeli city
6. Put this in your hair
7. Black tropical American cuckoo
8. Month in the Islamic calendar
9. Begets
10. Court game
11. Painkiller
12. New Zealand parrot
13. Suffix
19. Egg cells
21. Another name for Thor
24. About pontiff
25. The academic world
26. Raise
27. Civil rights city in Alabama
31. Encompasses
32. Helmet
34. Nostrils
35. Lovable Spielberg alien
36. Divides
40. Ruthenium
41. Preceding all others in time
45. Past participle of lie
47. Fastener
48. Overindulged
52. Ancient lyric poem
53. Ardent supporter
54. Iranian village and Islamic pilgrim attire
56. A fragrant resin obtained from tropical trees
57. Semitic fertility god
59. Millisecond
60. Cool!
61. "Take on Me" singers
62. ESPN sportscaster Bob
63. Accommodating place

## 2016 GLoBal Sights Photo Contest

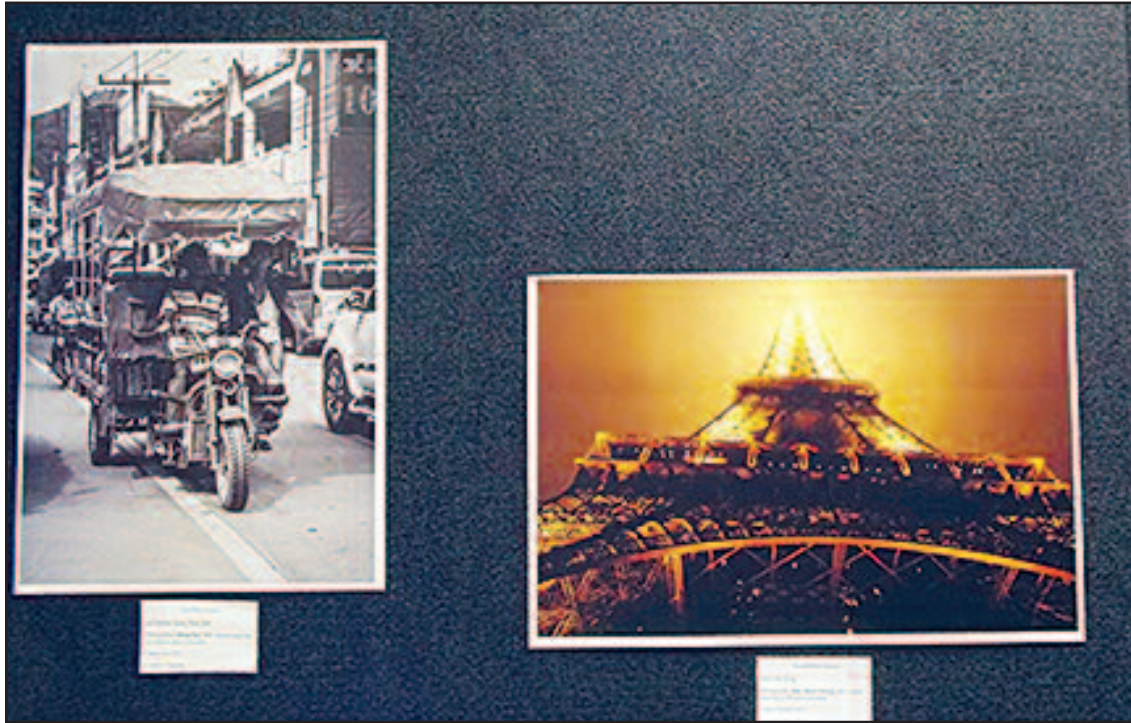
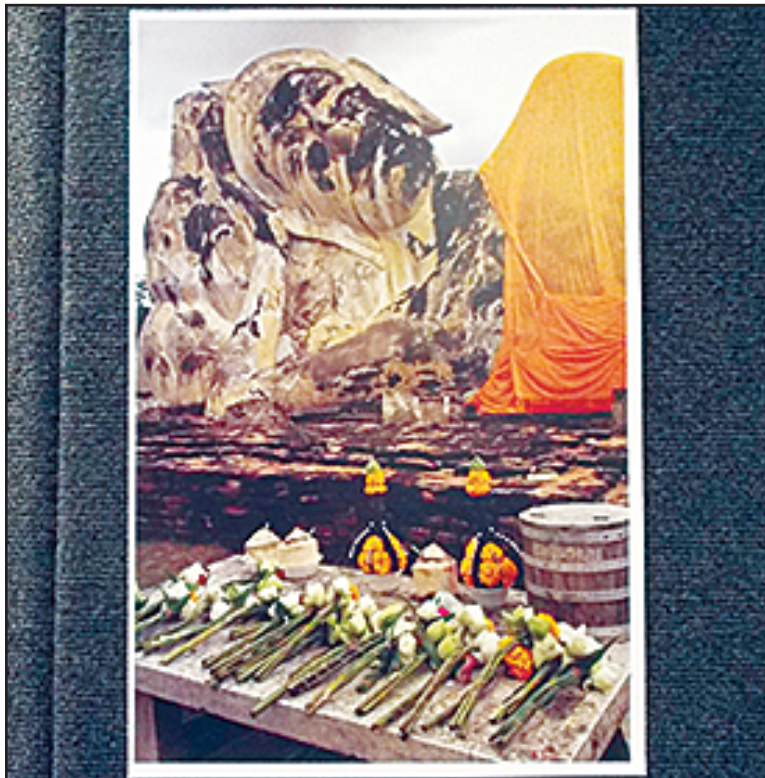


Photo by Jerusalem Tukura

MSU junior Khian Foo wins first place in the 2016 Global Sights Photography Contest student category with his picture titled “A Dollar Taxi, Tuk Tuk” (on the left). Second place in the student category went to junior Else-Marie Nelson’s “Into the Fog” (on the right). The winners’ pictures from both the student category and the faculty, staff and alumni category were displayed in the hallway near the Beaver Creek Cafe. The Office of International Programs sponsored the event as part of International Education Week.



MSU senior Nanako Sato’s “Reclining Buddha” photo placed third in the contest.  
Photo by Jerusalem Tukura

## MSU hosts annual cultural day



Submitted Photo

MSU students (on the right) Mahafujur Rahman and Rafena Hoque serve food from Bangladesh during the International Cultural Celebration last month. The MSU Diversity Council and the Office of International Programs sponsored the event.



Submitted Photo

MSU student Devon Owens receives a plate of Brazilian food at the International Cultural Celebration.

**MI MEXICO**  
AUTHENTIC MEXICAN FOOD  
701-858-0777  
301 40th Ave SW #101 • Minot, ND 58701  
Open 11 am - 10pm

“Best Authentic Restaurant In Town”  
READER’S CHOICE AWARD WINNER

MDN Readers' Choice

## Students tie fleece blankets for winter



Photo by Ton Yamashita  
MSU students (from the left) Laura Fritel, Kristin Long, Elizabeth Combs and Alexis Schmit pose in front of the Christmas tree in the Beaver Dam as they prepare to make their fleece tie blankets. MSU Life sponsored the event.

## Free ice skating night brings students to the Maysa Arena



Photo by Ton Yamashita  
MSU students enjoy free ice skating at the Maysa Arena. MSU Life sponsored the event last month.

**ATTENTION!**

HAVE YOU APPLIED TO STUDY ABROAD?

Deadline for summer & fall is February 15th!

For more information visit:  
[www.MinotStateU.edu/international](http://www.MinotStateU.edu/international)

**100% TUITION FREE COLLEGE**

- 100% TUITION ASSISTANCE
- STUDENT LOAN REPAYMENT
- AFFORDABLE HEALTH, LIFE & DENTAL INSURANCE
- PAID TRAINING
- MONTHLY PAYCHECK
- SERVE YOUR COMMUNITY, STATE & COUNTRY

SFC Jory Stevenson: 701.340.6376  
SSG Jesse Cruise: 701.580.4752  
SGT Brandon Carrigan: 701.340.0636

#SOCIAL NETWORKS

f t i

**NORTH DAKOTA NATIONAL GUARD**

NATIONALGUARD.com

**TEXT "NDGUARD" TO 95577**

# Men's basketball goes on a home winning streak

By Jerusalem Tukura  
Editor

The MSU men's basketball team hosted the Mayville State University Comets and defeated them 93-57 Nov. 20 at the MSU Dome. Although the Comets made the first couple of shots, the Beavers gained dominance after several ties in the first half with about eight minutes left. A jumper by Nate Mertens (Sr., G.) propelled the Beavers to a two-point lead which progressed into an 11-point lead by the end of the first half.



The second half was a breeze for the Beavers. They started the second half with two three-pointers - one from Luis Rici Maia (Jr., G.) and the other from Russ Davis (Jr., G.). With a shooting percentage of 78.57, MSU dominated the court, leaving little chance for Mayville State to shoot. The highest lead of the game was 41 points toward the middle of the second half. The Beavers kept up the pace and ended that game with a 36-point lead of 93-57. Top shooters of the game were Davis with 24 points, Stevan Jovanovic (Jr., F.) and Maia with 18 points each, and Nathaniel Moore (Jr., G.) with 13 points.

The following Tuesday, Nov. 22, MSU took on Valley City State and gained another victory, 75-60. Once again, the Beavers had a faster-paced second half with a score gap of 10 points (41-31) compared to five (34-29) in the first half. Tyler Rudolph had an outstanding game and paced the Beavers with 29 points. Other players that contributed to the win were Jovanovic with 12 points, Moore with nine, and Maia with seven points.

Prior to these two home games, the Beavers played against Henderson State University on Nov. 11, losing, 80-88. The following day, the Beavers took on Southern Arkansas University and fell, 74-82. MSU then had two home games that began their winning streak of four. The two home games against University of Jamestown on Nov. 15 and Dickinson State University on Nov. 16 resulted in victories with final scores at 82-73 and 85-73, respectively. Last Saturday, MSU fell to rival University of Mary, 72-81.

The team will take on Northern State University on Friday in Aberdeen, S. D., and Minnesota State University Moorhead Saturday in Moorhead, Minn.

# Beavers face challenges

By Jerusalem Tukura  
Editor

The Minot State women's basketball team has had a tough season so far with two wins and five losses.

Sunday, Nov. 20, they hosted the University of Jamestown in the MSU Dome and lost, 88-94. A score of 7-0 at the start of the game, with MSU up, was not enough to keep the Beavers at the top of the game as the first quarter ended in a tie, 18-18. With eight ties afterwards, UJ finally took an 11-point lead of 75-86 with 2:46 left on the clock.

Game stat leaders were Mariah Payne (Fr., G.) and Kari Clements (So., G.) with 23 points each, Kori Eurich (Sr., G.) with 15 points and Diondra Denton (Jr., G.) with 13 points.

On Nov. 23, Minot State took on Mayville State University, defeating the Comets, 82-62. Although the Beavers were down by six at the end of the first quarter, they picked up the pace and dominated throughout the rest of the game.

The first half was more challenging, as MSU had a shooting percentage of 35.3 compared to that of the second half, 57.7. Denton, Eurich, Sam Brizee (Fr., F) and Payne brought about this change, with 20 points from Denton, 15 from Eurich, 13 from Brizee, and nine from Payne. MSU had 33 total turnovers, but regained balance on some of those with 16 second-chance points.

At the start of the season, the women's basketball team took on RV Washburn University on Nov. 11 and lost, 61-77. The following day, MSU played the University of Central Missouri and lost, 75-98.

On Nov. 16, the Beavers lost to Dickinson State University, 63-73, but were able to muster their first win of the season in a game against Lake Superior State University on Nov. 18 with the final score at 75-71.

MSU fell to rival University of Mary Saturday, 54-67. The Beavers had a quick start, but once the Marauders gained the lead, they kept it until the end of the game.

Minot State will face Northern State University tomorrow in Aberdeen, S. D., and Minnesota State University Moorhead Saturday in Moorhead, Minn..



Photo by Jerusalem Tukura

MSU sophomore guard Kari Clements (No. 12) shoots against Dickinson State University. The Bluehawks won, 63-73, to spoil MSU's home opener in nonconference play.



Photo by Jerusalem Tukura

MSU freshman forward Haley Hildenbrand (No. 22) shoots a running one-handed jumper against Dickinson State in the Dome.



## Four gridders earn All-NSIC North

(MSU Sports Information) — MSU football landed four players on the Northern Sun Intercollegiate Conference All-North Division team including senior punter Aaron La Deaux as First-Team Special Teams.

La Deaux was joined by junior defensive back Donnell Vercher, named to the Second Team Defense, and seniors Dalton Houghton and Jarvis Mustipher, both named Honorable Mention.

It was the fourth time La Deaux was honored by the NSIC and the third time he earned First-Team honors. He is the nation's leader in punting, averaging 47.1 yards per kick. On the season, La Deaux finished with 26 punts sailing 50 yards or more including



La Deaux



Vercher



Houghton



Mustipher

two over 70.

Vercher, a defensive back, led MSU with 95 tackles and three interceptions.

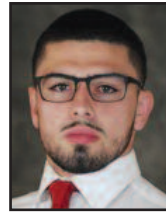
Houghton led MSU with four sacks and finished with 39 tackles overall, while Mustipher finished with 598 yards rushing.

## Toledano named NSIC Wrestler of the Week

(MSU Sports Information) — Senior wrestler Carlos Toledano was named Northern Sun Intercollegiate Conference Wrestler of the Week on Nov. 14.

Toledano won the 174-pound championship at the North Dakota State Bison Open as the first MSU athlete to win a championship at the event since 1973.

Toledano went 3-0 in three wins by decision, out-scoring his opponents 17-7.



Toledano

## Volleyball program to make coaching change

(MSU Sports Information) — MSU Athletic Director Andy Carter announced last week the university has dismissed head volleyball coach Ben Kaszeta.

Kaszeta finished his second season with MSU. He was 8-48 overall.

"Ben is a good man and poured

himself into our program and our student-athletes," Carter said. "For that, we are grateful."

MSU will begin a nationwide search for a new coach.

## Ramirez and Rafferty named to All-Central Teams

(MSU Sports Information) — Senior Ninfa Ramirez and freshman Erin Rafferty were named to the Division II Conference Commissioners Association All-Central Region Teams on Nov. 16.

Ramirez was named to the D2CAA Women's Soccer Central Region First Team for the second-straight season. With 44 points from 18 goals and eight assists, she led the NSIC and ranked third in the Central Region behind two Southwestern Oklahoma State players, who both also made the First Team.

Rafferty racked up another post season award in her first season as she was named to the Second Team. The 6-foot goalkeeper led the NSIC with a .915 save percentage, which ranks first in MSU single-season history.



Ramirez



Rafferty

## MSU wrestling off to a good start

By Isaac Hunt  
Sports Writer

The Minot State University wrestling team has already had three individuals win tournament titles and four win runners-up through two events in the 2016-17 season. Compared to last year, when no titles were won, the Beavers are off to a hot start in what looks to be a much-improved team with three champions and in the first two tournaments.

Carlos Toledano (174-pounds) went 3-0 in the first competition of the year to win a title at the Bison Open hosted by North Dakota State. There, he defeated a conference opponent in MSU Moorhead's Mitchell Kotschevar and a Division I opponent in NDSU's Cole Witzig.

The title was one of just two that host school NDSU did not walk away with. Fellow seniors Shane Sheppard placed second in the 157-class as Mitchell Eull finished third as a heavyweight. In total, 11 Beavers placed at the event.

"I was really happy with how we competed today," MSU head coach Evan Forde said. "We were aggressive and physical, and I thought we were able to use our conditioning to our advantage. Carlos wrestled really well today and came out a champion. I'm really proud of the work he has put in, so it was great to see that pay off."

Zach Berry, at 157, and Jake Belland, at 285, both earned freshmen titles at the Cobber Open after placing in their first tournament at NDSU with a sixth-place finish for Berry and a fifth-place finish for Belland.

"Overall I was pretty happy with how we competed," Forde said. "I thought we got off to a slow start, but we challenged the guys to step up and I feel they responded well."

A total of 10 Beavers placed at the Cobber Open, including six freshmen in the Maroon Division.

At 165 and 184, Parker Osterman and Keegan Berry finished in the top three. **See Wrestling — Page 11**

**Red & Green is seeking a Hockey Reporter**

Get paid to write on MSU Men's Club Hockey home games

MSU Student Newspaper • Stop by office, Admin 152, for more information

## SUDOKU

								6
		5			9		1	
3	7							
7			8	6			5	
	9		5					
8		2		1	7			
		6				3		
					8	9		2
1	8				3			

Level: Intermediate

## Beavers defeat Iowa State, adds fourth victory to winning streak



ABOVE: Jeremy Johnson brings the puck up the ice into the Iowa zone. The Beavers defeated Iowa State, 5-3, at home Nov. 18, and again the next night, 2-0. The last time the two teams met was in the 2016 ACHA national tournament quarterfinal, with the Cyclones winning, 2-0.

LEFT: Jeremy Johnson looks for an open shot in the Iowa zone in the Nov. 18 game.  
Photos by Vanessa Christiuk





## POWER PLANT AND PROCESS PLANT TECHNOLOGY START ON CAMPUS IN JANUARY

Transfer now and start your  
career in just two years.



[bismarckstate.edu/energytransfer](http://bismarckstate.edu/energytransfer)

224-5651 | 800-852-5685  

Funded by U.S. Department of Labor  
Grant #TC-26460-14-60-A-38

### ... Auction continued from page 1

Prizes include car starters, one-hour massages, MSU athletic tickets, gift certificates to various Minot restaurants, a diamond pendant, an electric grill, car washes and much more.

The auction is a fundraiser with part of the earnings going to a community or organization in the Minot area. This year's donation is going to the Domestic Violence Crisis Center.

"The most exciting part for me is the night of, when all of the hard work comes together and it all pays off," Janna McKechnie, class instructor said. "Also, the students recognizing that THEY did this, they put this whole thing together."

The KMSU Auction is completely assembled by students. The class is a communication class, but it is also similar to a business class. Students learn how to communicate to businesses, how to promote and to organize events. It is not like a normal class, where a teacher gives a lecture, assignment and exam. It is a very pro-active class, where students are supposed to be self-motivated, with the instructor giving advice and suggestions.

Students learn to produce events from start to finish, from sales to promotion, editing, organizing and shooting video, and all the other numerous aspects involved. Each student in the Comm 354 class is assigned to go to businesses or organizations to solicit donations for the auction.

"The hardest part is getting donations, but we have a lot of amazing people donating," Ariel Koh, a student in Comm 354 said. "I hope lots of people tune in to watch, because we have a lot of amazing items."

For a complete list of prizes, go to [kmsuauction.com](http://kmsuauction.com).

Since the KMSU Auction began, students have raised more than \$49,000. Last year, the auction earned \$9,500.00.

### ... Wrestling continued from page 9

ished as runners-up. Adrian Avena finished fourth at 149 while Austin Moen, 285, finished in sixth. Both Avena and Osterman were unattached.

Four MSU wrestlers placed in the Gold Division, including last season's wins leader Mitchell Eull who finished second at 285. Shane Sheppard finished in fourth at 157; Shane Williams Jr. and Liam Hayden finished in sixth at 133 and 125, respectively. Hayden wrestled unattached.

Forde says he is happy with what he has seen so far.

"I'm excited to see our dual team in action for the first time on Dec. 2 in Great Falls," he said.

Minot State will wrestle again at the Argo Duals and Battle of the Rockies on Dec. 2 and 3, both hosted by the University of Great Falls.

Hockey reporter  
needed for the Red  
& Green newspaper.  
[redgreen@minotstateu.edu](mailto:redgreen@minotstateu.edu)



7	4	5	3	2	6	9	8	1
2	6	9	8	4	1	7	3	5
1	8	3	5	9	7	6	2	4
4	3	6	7	1	9	2	5	8
8	7	1	2	3	5	4	6	9
9	5	2	4	6	8	3	1	7
5	9	4	6	8	2	7	1	3
3	6	5	4	7	9	8	1	3
9	4	8	3	5	1	7	2	6

ANSWER:

**YOU**  
have got to have an  
**OPINION**  
so why not  
**SHARE**

MSU students, submit your letter to the editor at  
[redgreen@minotstateu.edu](mailto:redgreen@minotstateu.edu)

## RED & GREEN

### Publication Dates

December 2016						
S	M	T	W	T	F	S
				1	2	3
4	5	6	7	8	9	10
11	12	13	14	15	16	17
18	19	20	21	22	23	24
25	26	27	28	29	30	31

### January 2017

S	M	T	W	T	F	S
1	2	3	4	5	6	7
8	9	10	11	12	13	14
15	16	17	18	19	20	21
22	23	24	25	26	27	28
29	30	31				

### February 2017

S	M	T	W	T	F	S
				1	2	3
4	5	6	7	8	9	10
11	12	13	14	15	16	17
18	19	20	21	22	23	24
25	26	27	28			

### March 2017

S	M	T	W	T	F	S
				1	2	3
4	5	6	7	8	9	10
11	12	13	14	15	16	17
18	19	20	21	22	23	24
25	26	27	28	29	30	31

### April 2017

S	M	T	W	T	F	S
						1
2	3	4	5	6	7	8
9	10	11	12	13	14	15
16	17	18	19	20	21	22
23	24	25	26	27	28	29
30						

## The Minot Daily News has routes available!

Small Neighborhood Routes, open in various areas of Minot that are great for college students!

- Early mornings
- Earn your own money
- Save \$\$ for college!

**701-857-1910**  
Don't wait, Call **TODAY!**

**301 4th St SE • Minot, ND**

## Job Opportunities from



**MED AIDE:** Pass medications to residents at Trinity Homes. Qualified applicant must have knowledge of medications and treatments as well as procedures to ensure safe administration. Position does require numerical ability and clerical perception. May be asked to work as CNA to assist with needed. Current North Dakota Med Aide II or Med Aide III certificate is required as well as current North Dakota CNA certificate and CPR certified.

**LPN:** Responsible and accountable for assessment, evaluation, plan of care, monitoring and reporting changes to the physician and family. Will delegate selected nursing activities to other health care workers as well as supervise staff with the continuous evaluation of care. Full and Part-Time positions available at Trinity Homes and Trinity Clinics. Must have current North Dakota LPN license to qualify.

**FINANCIAL COUNSELOR:** Calculate and collect deductibles, copays and self-pay payments prior to services rendered. Will provide assistance to patients in identifying any personal financial resources (third party resources) which would enable them to pay for medical care or develop acceptable payment plans. Full Time/Days position available.

**ORTHOTIC FITTER SALES:** Greet and assist customers with selection of home medical equipment and supplies. Will educate patients on the insurance process required for coverage as well as properly fit all products.

**HOUSEKEEPER:** Clean and sanitize rooms and furnishings in assigned areas to maintain high standards of cleanliness and sanitation throughout Trinity Homes. Full Time position available. **HIRING BONUS** available to qualifying applicants.

**To see more listings or to apply, visit [www.trinityhealth.org](http://www.trinityhealth.org)**

Trinity Health is an  
EEO/AA/Disabled Individuals/Veteran Employer

Accident (minor)

Allergy

Athlete's Foot

Backache

Broken Bone

Cold

Cough

Diarrhea

Earache

Fever (moderate)

Flu

Headache

Ingrown Toenail

Insect Sting

Nausea

Neck Spasms

Pink Eye

Poison Ivy/Oak

Rash

Runny Nose

Sinus Infection

Sore Throat

Sprained Ankle

Strained Muscle

Upset Stomach

Vomiting

Wart

*From* **A** *to* **Z**

**Our Convenient Care  
Clinic has you covered.**

*Roxann  
Brown, FNP-C*



*Joe  
Smothers, DO*

*Carla  
Pease, AGPCNP-BC*

 **TRINITY**  
HEALTH  
*Convenient Care Clinic*

**Mon-Fri 9 am to 6 pm**

**Sat-Sun 12 pm to 6 pm**

**Health Center – Medical Arts**

**400 E. Burdick Expy. • Minot**

**857-7817**

[www.trinityhealth.org](http://www.trinityhealth.org)

*For all your prescription needs stop by  
KeyCare Pharmacy located in Health Center – Medical Arts*