

# MINOT STATE UNIVERSITY Red & Green

Volume 98, Number 10

Feb. 2, 2017

Minot, N.D. 58701 [MinotStateU.edu/redgreen](http://MinotStateU.edu/redgreen)

## Inside This Issue:

- 2017-18 scholarship application due Feb. 15, Page 2
- Fagan's column, 'Women's marches are democracy in action,' Page 4
- Darwin Day activities planned, Page 7
- Men's hockey sweeps Arizona State, Page 10



File photo

MSU faculty (from the left) Melissa Spelchen, Erik Anderson and Andy Bertsch are pictured in a promotions poster.

## Concert brings community together with rock 'n' roll

By Jerusalem Tukura  
Editor

This year's Community Rocks Concert takes place Saturday at the Grand Hotel in Minot. Gates open at 6 p.m. with hors d'oeuvres and two cash bars. Guests can review and bid on silent auction items at the time of opening; the show starts at 7 p.m.

A simple hallway conversation between two Minot State University faculty members, Andy Bertsch and Erik Anderson, birthed the rapidly growing event, now held annually.

"Every time I would pass Erik Anderson in the hallway, I'd bring it up to him," Bertsch said. "We talked about it for probably two years. Finally, one day at this stairwell here in Old Main, we stopped and we talked a little bit longer about it. And that's how it all came to be — just a hallway conversation."

Anderson finally connected to Bertsch's idea, and saw it as an opportunity to do what he loves, as well as

See Concert — Page 2



## Aldrich named head football coach

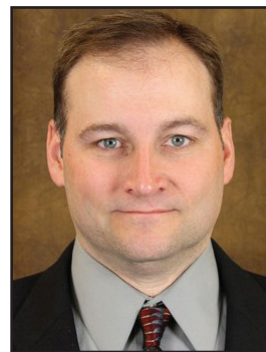
(MSU Sports Information) — Minot State University Director of Athletics Andy Carter announced Monday that Mike Aldrich was selected to serve as the Beavers' head football coach.

Aldrich becomes MSU's 21st head coach in nearly 100 years of football.

"The process worked," Carter said.

"We brought in three football coaches to visit our campus, and they revealed themselves to be three strong candidates. It is always the goal to have a choice, and we succeeded in reaching that goal. In the end, Mike established himself as the best fit for Minot State

See Aldrich — Page 5



Aldrich



Submitted Photo

Baseball players and tournament participants gather on the ice at Lake Audubon for the team's ice fishing fundraiser.

## Baseball team hosts ice fishing tournament

By Mia Lupo  
Comm 281

The baseball team, led by head coach Scott Eul, hosted an ice fishing fundraiser last month on Lake Audubon at the Totten Trail Bar and Grill. Proceeds were to supply the baseball team with new balls, uniforms, equipment, team travel necessities and

other needs that may arise throughout the season.

Teams of two-to-three anglers competed for the grand prize, Biggest Fish and a raffle prize.

Prizes included a \$1,500 grand prize for the winning team as well as cash prizes for the top-five winners, an ice fishing auger

See Fishing — Page 8

## 2017-18 scholarship application available, deadline Feb. 15

Minot State University offers a variety of scholarships funded from gifts to the university. The scholarship amounts vary depending on student eligibility and the availability of funds. Scholarships are based on academic achievements, financial need and other criteria as defined by the donors.

The deadline for the 2017-18 scholarship application is Feb. 15. Not all colleges and/or departments use the online scholarship application. Be sure to check with your college and/or department

for additional scholarship information.

Undergraduate and graduate students returning to MSU for the 2017-18 academic year can fill out the electronic scholarship application on the Financial Aid website, [MinotStateU.edu/finaid/scholarships.shtml](http://MinotStateU.edu/finaid/scholarships.shtml), and click on "2017-2018 Returning Students Scholarship Application." A returning student is a student who has taken courses at MSU after high school graduation.

Students who will be new freshmen should complete the

scholarship application by clicking on "2017-2018 New Freshman Scholarship & Award Program Application." A new freshman is a first-year student who has not attended a postsecondary institution after high school, but may have enrolled in college or university coursework while in high school.

New transfer students can fill out the transfer student scholarship application by clicking on "2017-2018 New Transfer Student Scholarship & Award Program

**See Scholarship — Page 3**

### ... Concert continued from page 1

offer it to people who share his passion for good music.

"I grew up listening to rock 'n' roll almost exclusively, especially classic rock," Anderson said. "I got into that in high school. I discovered Led Zeppelin, Pink Floyd and just really got into the '60s and '70s rock 'n' roll. It's a genre of music that I dearly love, but I never have a chance to play it. I don't have an outlet for that. So this presented an opportunity to play music, arrange music and be active with music that speaks to my past and to so many people in this community and this country who identify with rock 'n' roll from the '60s to the present."

Anderson's son, Erik, an MSU senior and music major, is also involved in the organization of this event, and has been from its start in 2015. The younger Anderson's talent in musical composition earned him a spot on the board the following year.

"The first year that we did this," Anderson said, "my dad asked me

to do a couple of arrangements — songs that we couldn't purchase ourselves and we had to compose. So I did those and the very next year, we decided to make it a formal non-profit. I was put on the board and I got put in charge of all music — choosing the set list and deciding what I would arrange, what other people would arrange and those kinds of things," the student said.

Bertsch and both Andersons believe that, in a country with an undying love for rock 'n' roll, this event serves as an opportunity to bring people together and promote unity and coherence. The concert strives to provide the community with what they love and, at the same time, give to local causes in need through monetary donations gained via ticket sales and auctions.

"This is our third year and, every year, we've probably averaged \$30-40,000 worth of monetary gifts going to some group of charities," Bertsch said.

This year's event includes a live auction and a silent auction. Among the items up for auction are two gui-

tars — one signed by the classic rock group, Cream, and the other by the bassist from Pink Floyd, Roger Waters — and two tickets to see Tom Petty and The Heartbreakers. Joe Walsh is the opening act for that concert.

Also up for auction is a dinner at the Anderson's, which includes a private show and full-course meal.

Anderson and his son will both perform at the concert, along with members of the Minot Symphony. Anderson plays the cello, which will be hooked up to an amplifier to make it sound like an electric guitar.

Tickets are available at the Roosevelt Park Zoo, Jacobson Music, and Classic Rock Coffee Shop. Tickets are \$60 for reserved seating in front of the stage and \$45 for unreserved seating, located on the wings.

Although everyone is welcome, including families, alcohol will be served at the event. There is no alcohol-free section for children, so it is advised that parents and guardians plan accordingly.

## News in Brief

### Guest speaker Joe Davis on 'Future of Black History'

Joe Davis, an MSU graduate, will present "The Future of Black History" Friday at 10 a.m. in the Multicultural Center, first floor, Student Center.

He will also host an open mic session/workshop in the Beaver Dam at 1 p.m.

Davis is a multi-media, spoken-word poet, teaching artist and community organizer based in the Twin Cities. All MSU students, faculty and staff are invited.

### Super Bowl Party for students set for Sunday

Minot State University students are invited to a Super Bowl Party in the Beaver Dam on Sunday, from 5 to 9 p.m. The event, free with a valid MSU student I.D., is sponsored by MSU Life. Visit MSU Life on Facebook for event reminders and updates.

### Hypnotist Sailesh to come to campus

MSU Life invites students to experience hypnotist Sailesh at Ann Nicole Nelson Hall, Old Main, on Tuesday at 8 p.m. Sailesh has performed for more than 20 years, a staggering 5000+ shows. He is dubbed "The Best Hypnotist on the Planet" by MTV Europe.

### Two-Minute Lecture Series continues Feb. 8

The Two-Minute Lecture Series continues Wednesday with Ron Fischer, MSU English instructor, presenting "Creative Writing: When the Character Comes Alive."

The lecture series introduces short topics and gives students a familiarity with the College of Arts and Sciences.

**JACK & JILL** went  
**UP NORTH HILL**  
AND BOTTLE SHOP  
a pail of ale ...

- Every week day low bar prices - 10am to 7pm
- Happy Hour Weekday, 9pm to 10pm
- Karaoke Sunday, Monday, and Wednesday
- Trivia Monday at 7pm
- Tuesday Tap night, 7pm to 11pm
- Live Music Friday and Saturday

**BAR & BOTTLE SHOP**  
2015 N. Broadway  
Must be 21 to enter

**THE LANDING**  
BAR & BOTTLE SHOP  
MINOT, ND



## 2017-18 MSU SCHOLARSHIP APPLICATION

Undergraduate scholarships available. Application deadline is Feb. 15.

Apply online, [MinotStateU.edu/finaid/scholarships.shtml](http://MinotStateU.edu/finaid/scholarships.shtml)

If you have questions, call MSU Financial Aid Office, 701-858-3375

# Voices on Campus

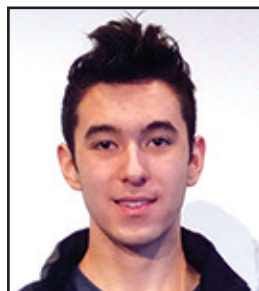
“Where is your favorite spot to hang out on campus, and why?”

Ton Yamashita  
Comm 281



Adam Al Sheikh  
Computer Science

“My favorite place to hang out is the Beaver Dam because I know a lot of people who hang out there, and I just enjoy sitting there and talking to people.”



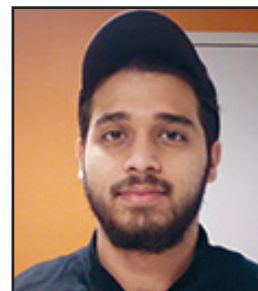
Dalerjon Rustamov  
Computer Science

“I like to be alone actually, third floor of Student Center because, you know, no one is there and I just want to enjoy the life on my own, having laptop with me and my phone, probably.”



Lynae Dobbins  
Psychology

“My favorite place is the cafe. In the cafe, usually it's where I hang out with friends, because we all get together and eat and we stay for a while talking. It's the most convenient place that everyone goes to because everyone wants to eat.”



Rohit Tiwari  
Computer Science

“My favorite place is the Beaver Dam because I usually play pool a lot. And between my classes, I usually stay there every time mostly, and friends come there and play pool. That's why I like it there.”



Tu Tong  
Marketing

“My favorite place to hang out is the gym, because I can work out, which can have my brain refreshed and relaxed. And I can meet other friends, new friends there and play some sports.”



Yaser Shahidi  
Accounting

“My favorite place is the gym, because you can meet new people, and we can actually meet up. And we play soccer, which makes us know and communicate with new people and makes us all bond together with different students, even freshmen.”

## ... Scholarship continued from page 2

Application.” A new transfer student is a student that has not attended MSU before the 2017-2018 school year, but has attended at least one other college or university after high school before applying to attend MSU.

Graduate students beginning the 2017-2018 academic year can fill out the graduate student scholarship application for new students at the same link and click on “2017-2018 New Graduate Student Scholarship & Award Program Application.” A new graduate student is a student enrolled in the MSU graduate program for the first time in fall 2017 or spring 2018.

All financial aid scholarship applications are completed online. Students will receive an email confirmation that their application has been submitted. For more information, contact the MSU Financial Aid office at 858-4152.

**MDN Readers' Choice**

**READERS' CHOICE AWARD WINNER**

**BEST FAMILY RESTAURANT**

FOR 2 YEARS IN A ROW







**HOMESTEADERS RESTAURANT**

MINOT, NORTH DAKOTA



**BREAKFAST SERVED ALL DAY**

2501 ELK DRIVE - MINOT  
701-838-2274  
M-S 6:30AM - 9PM SUN 7AM - 9PM



## Between the Lines

*Women's marches are democracy in action*

By Dan Fagan  
Staff Writer

There was no shortage of opinions on the women's marches of Jan. 21, the day after the presidential inauguration. My Facebook feed lit up like a Christmas tree with people commenting on the marches with such varied comments as "Beautiful," "What a waste of time," "Take back America," "Overdramatic" and so on.

The Minot Daily News published an editorial Jan. 24 stating, "This weekend's coordinated anti-Trump protests are an example of people unable to cope with adversity not even theoretical ones. Instead of engaging or doing something constructive, they whined and complained in one mass temper tantrum."

The editorial further continues, "Nothing was accomplished here," and "Just imagine energy directed at solving real problems instead of complaining about ones that don't yet exist and are unlikely ever to."

I would hardly call an act of freedom of assembly, which is

constitutionally guaranteed, "a mass temper tantrum." Our founders included this right in the constitution to promote civil activism and engagement, coming out of the shackles of the king of England who suppressed such acts. Citizens should feel compelled to voice their opinions when they are concerned about their country and the issues facing it. Demonstrations, like the women's marches, are actions of an engaged citizenry.

Frederick Douglas, a former slave and abolitionist, said,

"Power concedes nothing without demand."

Douglas' words were embodied in the worker movements that brought an end to child labor; the suffragette movement resulting in a woman's right to vote; the marches led by Martin Luther King Jr. prompted the passage of the Civil Rights Act; protests influenced Nixon to bring a close to the Vietnam war, and marches inspired the Supreme Court to rule on marriage equality. These journeys of progress mean very little without the civil engines that

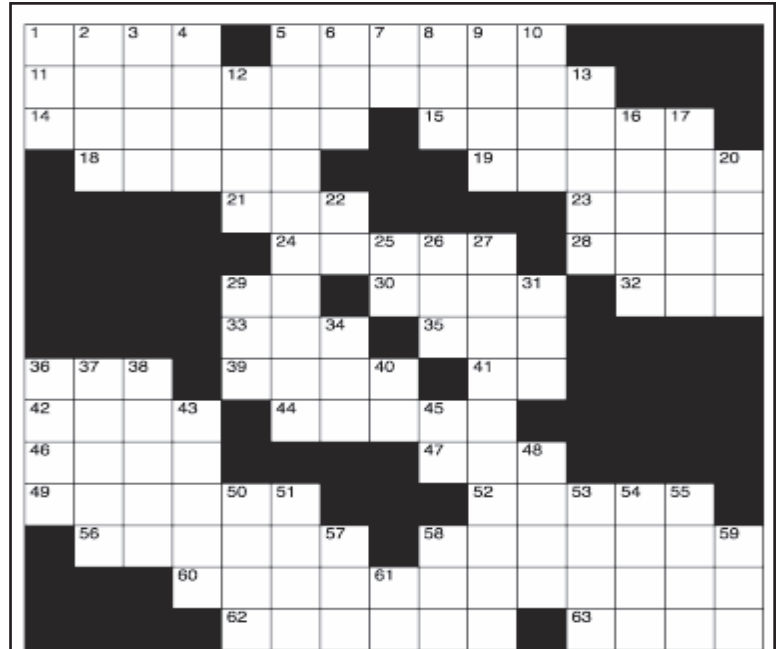
drive them, the people.

The women's marches did accomplish something. They showed everyone that a significant bloc of women, and men, some estimate the U.S. marches to have topped 3.5 million, disagree with the current administration and the congressional Republican majority's stance on women's issues. That message was received loud and clear.

To argue these marches fail to address "real problems" is to miss the point entirely. Gender inequality is a real problem. Women deserve equal pay for equal work, not \$.78 to \$1 of what a man earns. A woman's reproductive health is her business, not the business of Congress, which is comprised 80 percent of men. Finally, women made clear their distrust in a president who was caught on tape bragging about sexually assaulting women and who has been quoted as calling them pigs, dogs and slob.

To the women who marched January 21: your voices were heard and your actions were not

**See Women — Page 5**



### CLUES ACROSS

- |                                      |   |
|--------------------------------------|---|
| 1. Famed Spanish General's nickname  | 35. Royal Bank of Canada                  |
| 5. Drink alcohol                     | 36. Polyvinyl chloride                    |
| 11. Savings for soggy days           | 39. Lifeless                              |
| 14. Kleenex, Puffs are some          | 41. Doctor of Medicine                    |
| 15. Moved in a circular way          | 42. Former Saudi Arabian king             |
| 18. Pile of stones                   | 44. River along border of India and Nepal |
| 19. Drenched                         | 46. German widow                          |
| 21. Talk to you (abbr.)              | 47. Administrative review board           |
| 23. World's longest river            | 49. Small tower                           |
| 24. Thoughts                         | 52. Central American fruit                |
| 28. Stake                            | 56. Cigar                                 |
| 29. Lawrence Taylor's nickname       | 58. Bring to life                         |
| 30. Coat or smear                    | 60. Linked together in a chain            |
| 32. Comedian Josh                    | 62. Marinara, BBQ are two                 |
| 33. Cost, insurance, freight (abbr.) | 63. Mail                                  |

### CLUES DOWN

- |                                   |                                       |
|-----------------------------------|---------------------------------------|
| 1. Expression of creative skill   | 29. Portable computer screen material |
| 2. Nonclerical                    | 31. Binary-coded decimal              |
| 3. Credit card company            | 34. Supervises flying                 |
| 4. Ancient Chinese city           | 36. Represents dull, abrupt sound     |
| 5. Personas                       | 37. Deformity involving a limb        |
| 6. More (Spanish)                 | 38. Map                               |
| 7. Close to                       | 40. Dominican Republic                |
| 8. Nigerian City                  | 43. Breed of hogs                     |
| 9. Pals                           | 45. District attorney                 |
| 10. Internal                      | 48. Light Russian pancake             |
| 12. Type of tent                  | 50. Selfs                             |
| 13. Beloved Princess              | 51. Rock songstress Turner            |
| 16. Supplementing with difficulty | 53. American Music Awards             |
| 17. Region in Mississippi         | 54. Partner                           |
| 20. Brave act                     | 55. Egyptian Sun god                  |
| 22. 36 inches                     | 57. European money                    |
| 25. __, denotes past              | 58. Consumed                          |
| 26. Swiss river                   | 59. Doctor of Education               |
| 27. Submersibles                  | 61. Actinium                          |

## Red & Green

152 Administration Building  
Minot State University  
500 University Ave. W  
Minot, ND 58707

Phone: 858-3354

E-mail: redgreen@minotstateu.edu

ONLINE: MinotStateU.edu/redgreen

Adviser: Frank McCahill

### EDITOR

Jerusalem Tukura

### ASSISTANT EDITORS

Danielle Gibson

Ton Yamashita

### ONLINE EDITOR

Josh Jones

### CIRCULATION

Stephanie Awo-osagie

**Letter Policy:** Letters to the editor must bear the writer's name, e-mail address and telephone number. Students must include year in school and major. Only letters from students, faculty or staff will be published. We will not print unsigned letters, and we reserve the right to edit all letters for factors such as clarity, punctuation, spelling and length. We reserve the right to refuse to print letters we consider libelous, superfluous or ridiculous. Please submit all letters before noon on the Thursday prior to publication. Students are limited to four letters for publication per semester. Letters may be e-mailed to redgreen@minotstateu.edu.

**Views** expressed by this publication are not necessarily those of the university, its administration, faculty or student body.

Red & Green is printed at Minot Daily News, Minot, N.D.

**... Aldrich  
continued from page 1**

University and for Beaver football. I am excited and very proud to have the opportunity to have Mike and his family join our team."

Aldrich comes to Minot State after two successful seasons as the assistant head coach and defensive line / linebackers coach at Southwest Minnesota State in Marshall, Minn. He was named the 2016 AFCA Division II Assistant Coach of the Year.

"I'd like to thank Andy and Dr. Shirley (MSU president Dr. Steven Shirley) for the opportunity to guide the Minot State football program," Aldrich said. "Their leadership and vision for the future is exciting and infectious. We are going to do things the right way, with the right people, by being competitive in every aspect of the program. There will be no fear of failure, only positive energy and grit, as we work to accomplish our goals."

Aldrich was the head coach at Augustana College (now Augustana University) from 2010-2012, spent three seasons as the team's defensive coordinator and coached the Vikings for 11 years total. He was named the 2010 AFCA Region 5 Coach of the Year and was a Liberty Mutual National Coach of the Year finalist that same season.

He finished with a 22-13 overall record as head coach with the Vikings, making one NCAA Division II playoff appearance in 2010. During the 2010 season, he

guided Augustana to a school-record 11 wins and the team's berth in the NCAA Division II playoffs was the first for the Vikings in 21 seasons.

In between his time at SMSU and Augustana, Aldrich spent two seasons as the defensive coordinator at Wayne State College. He coached at the University of Louisville (2003-2004), the Sioux Falls Storm of the Professional Indoor Football League (2000-2002 and 2005-2009), California

Lutheran (2000), College of the Sequoias (1999) and St. Olaf College (1995-1998).

Aldrich, a native of Burnsville, Minn., played collegiately for St. Olaf where he holds a bachelor's degree in economics and social studies education. He earned his master's degree in kinesiology / sports management from the University of Minnesota in 1999.

Aldrich and his wife, Kristen, have three children.

## SUDOKU

5				7			6	
		1	9	5		2		
	4							
		3				6		1
		5	1	2		7		
7				5				
8	6			7	1			
				4				2
	2							

Level: Intermediate

### Fun By The Numbers

Like puzzles? Then you'll love sudoku. This mind-bending puzzle will have you hooked from the moment you square off, so sharpen your pencil and put your sudoku savvy to the test!

### Here's How It Works:

Sudoku puzzles are formatted as a 9x9 grid, broken down into nine 3x3 boxes. To solve a sudoku, the numbers 1 through 9 must fill each row, column and box. Each number can appear only once in each row, column and box. You can figure out the order in which the numbers will appear by using the numeric clues already provided in the boxes. The more numbers you name, the easier it gets to solve the puzzle!

**... Women  
continued from page 4**

in vain. While the fight against misogyny and institutional sexism continues, a unified movement leads to the direction of progress. As a man, even though I can never truly understand the struggles women face in the modern world, I learned a great deal from watching these marches unfold and the issues they brought attention to. I was impressed; I imagine Frederick Douglass would be impressed as well.

9	6								1	2	7	5	8	3	4	9	6
									3	5	9	6	1	4	7	8	2
									8	6	4	2	9	7	1	3	5
									7	1	6	8	3	5	9	2	4
									4	9	5	1	6	2	3	7	8
									2	8	3	7	4	9	6	5	1
									9	4	8	3	2	6	5	1	7
									6	7	1	9	5	8	2	4	3
									5	3	2	4	7	1	8	6	9

ANSWER:

A	L	V	A		I	M	B	I	B	E										
R	A	I	N	Y	D	A	Y	F	U	N	D									
T	I	S	S	U	E	S		E	D	D	I	E	D							
C	A	I	R	N				S	O	A	K	E	D							
					T	T	Y				N	I	L	E						
					I	D	E	A	S		A	N	T	E						
					L	T		D	A	U	B		G	A	D					
					C	I	F		R	B	C									
P	V	C			D	E	A	D		M	D									
F	A	H	D		S	A	R	D	A											
F	R	A	U						A	R	B									
T	U	R	R	E	T				I	L	A	M	A							
S	T	O	G	I	E				A	N	I	M	A	T	E					
					C	O	N	C	A	T	E	N	A	T	E	D				
					S	A	U	C	E	S		S	E	N	D					

PUZZLE SOLUTION



*Loving God.  
Loving People.*

*You are warmly invited to join us!*

**Bible Study – Mondays at 7 p.m.**  
*515 Walders St.*

**Free Soup Lunch – Tuesdays 11 a.m.-1 p.m.**  
*MSU Nook*

**Worship & Friends – Wednesdays at 8 p.m.**  
*Multicultural Center*

*For more information, text 701-509-6318*



**Minot State  
UNIVERSITY**

## MSU Alumni Association Scholarship

Are you a child or grandchild of an MSU alumni, faculty or staff member? You could be eligible for a scholarship for the 2017-18 school year.

**Get your application and selection criteria online at [www.minotstateu.edu/alumni/scholarship.shtml](http://www.minotstateu.edu/alumni/scholarship.shtml)**

**Scholarship deadline for the 2017-18 academic year is Feb. 15, 2017.**

**If you have any questions, please contact the Alumni Office at 858-3234.**

## Students make stuffed animals



Photo by Ton Yamashita  
MSU senior Nanako Sato selects a T-shirt for the stuffed animal she is making during Build-A-Bear. MSU Life sponsored the event.

## Ideas for 2017 Homecoming theme, anyone?



Photo by Jerusalem Tukura  
Students write Homecoming 2017 theme suggestions on a white board in the Student Center hallway. MSU Life sponsored the board.

**SPRING & SUMMER**

Study Abroad applications are due  
**February 15th, 2017**

For more information visit:  
[www.MinotStateU.edu/international](http://www.MinotStateU.edu/international)

## Share the love with Goodwill this Valentine's Day!

Donate your used items to Goodwill and receive one coupon for 50% off any one non-sale item in the store.

Mention this ad with donation to receive coupon. Offer expires March 1, 2017.

### Items Acceptable to Donate:

- Clean clothing
- Accessories (purses, backpacks, jewelry, hats, belts)
- Shoes/Boots (in pairs)
- Sporting goods
- Musical instruments
- Decorations (seasonal and non-seasonal)
- Toys
- Garden tools, Hand tools
- Housewares, dishes, pots/pans
- Small appliances
- Bedding and linens



Shop with us today!

**1405 S Broadway  
Minot, ND 58701**



## Darwin Day activities planned

By Ton Yamashita  
Comm 281

Minot State University will hold Darwin Day next week on campus.

"The main intention of the event is to give people a chance to observe how elegant and interesting science is and, hopefully, get people more interested in science," Bikalpa Ghimire said. The Minot State University sophomore is a member of the MSU Biology Club.

On Feb. 9, MSU will welcome renowned naturalist Harry W. Greene, Professor of Ecology and Evolutionary Biology at Cornell University. At 7 p.m. in the science auditorium, he will speak on "Natural history, ethics, and aesthetics: why should we care about nature?"

On Feb. 10, Darwin Day activities continue from 8:30 to noon in the science center with greenhouse tours, demonstrations of lab mice, and entertaining evolution games.

Sydney Houlton, MSU senior, is president of the biology club.

"Darwin Day is great because it gives us all a chance to learn within the scientific community," Houlton said. "We, the college

students, get to learn from a guest speaker every year, and we get to help teach the younger students that come in to participate in the events. It is very rewarding to take part in this event every year and see the impact it has on people."

In addition to the science-based activities, former MSU art instructor Jessica Christy will give a lecture Feb. 10 at noon in Aleshire Theater, Hartnett Hall. Her talk, titled "The Evolving Narrative: Keeping Tradition in the Contemporary," is free and open to everyone.

Christy will also give three workshops for students. The first, a do-it-yourself screen printing session, is Tuesday from 6 to 9 p.m. Students need to bring their own T-shirt for screening. The second workshop, titled "Creating a visual narrative: Collage and materials," is set for Wednesday from 1 to 3 p.m. She will repeat the workshop from 5 to 7 p.m. All three workshops are in Hartnett Hall 215E.

Darwin Day, an international celebration day intended to inspire people with fascinating science facts, has been running for nine years.



## Valentine's Dinner

FOR FRIENDS AND LOVERS

FEBRUARY 14TH | 6-8PM | BEAVER DAM

LIVE MUSIC GAMES PRIZES

MEAL PLANS: 1 MEAL SWIPE + \$5 | NON-MEAL PLANS: \$14

DINING \$\$ ACCEPTED AS PAYMENT!

TICKETS MUST BE PURCHASED IN ADVANCE



MENU AVAILABLE AT MINOT STATE DINING FACEBOOK PAGE

## Three titles highlight second meet for men's indoor track and field team; women earn 2 third-place finishes

### Concordia College Cobber Duals, Jan. 28.

(MSU Sports Information) — Jacob Hatfield and Joel Cartwright both captured individual titles, and the men's 4x200-meter team raced to a relay championship at the Concordia College Cobber Duals Saturday. The meet was Minot State University's second meet in its indoor track & field season.

Hatfield and the relay team moved up the MSU all-time list in the process as Hatfield released the second longest toss in the weight throw, while the relay team moved into third place on the all-time list.

"It was a pretty decent meet for us," MSU head coach Stu Melby said. "We saw some nice improvements over the meet last week."

Hatfield earned his title with a throw of 15.61 meters. He was joined by teammates Victor Abonyi finishing fifth (14.67) and Kevin Hodges finishing sixth (14.07).

"The guys have been working hard and work really well together," Melby said of his throwers. "Technique makes the difference and they were hitting their spots."

Cartwright continued a strong start to his senior season, winning the men's 3,000-meters with a seven-second personal best with a time of 9 minutes, 34.73 seconds.

MSU's men's 4x200 relay team of Alex Cundiff, Josh Drew, Daniel Daffinrud and Chigozie Anaukwu raced to a time of 1:32.81 to outrun the competition. Anaukwu and Daffinrud both had a solid day, with Anaukwu placing second overall in the 60 and Daffinrud finishing third in the 200-meters.

On the women's side, Emily Westlake placed third in the 5,000-meters with a 20:13. The women's 4x200 team of Chloe

Melton, Shae Pedersen, Erin Winterton and Taryn Love also finished third with a time of 1:52.67.

### South Dakota State DII Invitational, Jan. 20

(MSU Sports Information) — The track and field team started its indoor season traveling to the South Dakota State DII Invitational in Brookings, S.D., Jan. 20.

Senior Joel Cartwright was the team's highest finisher at the event, taking fourth in the men's 5,000-meters.

Cartwright was the top finisher among NCAA Division II runners, as three Iowa Central individuals swept the first three places. He turned in a time of 15 minutes, 27.33 seconds, nearly 16 seconds under his seed time.

Patience Albertson led the Minot State women's team, finishing just outside the top 10 with an 11th overall finish in the women's 5,000 meters. Albertson finished the women's course with a time of 20:56.7.

Cartwright was joined in the

top 10 by senior Dylan Harvey and sophomore Victor Abonyi. Harvey finished eighth overall in the men's 300 hurdles with a time of 43.52, while Abonyi was 10th overall in the men's weight throw, tossing it 14.17 meters.

On the women's side, Albertson was joined in the top 15 by a trio of 12th place finishes. Randii Widmer-Reed was 12th in the women's triple jump with a leap of 10.02 meters, Jana Warrick-Jones finished 12th overall in the 800 with a 5:40.17 and Taryn Love placed 12th in the 60-meter dash running it in 8.23 seconds.

The Beavers travel to North Dakota State for the Bison Open Friday and Saturday.



Hatfield



Cartwright



Cundiff



Drew



Daffinrud



Anaukwu



Submitted photo

Participants gather at the Totten Trail Bar and Grill for the MSU Baseball Ice Fishing Tournament last month.

### ... Fishing continued from page 1

from Scheel's for the winner of the Biggest Fish, and a fishing trip to G&S Marina on Last Mountain Lake in Strasbourg, Saskatchewan for the raffle winner.

"One of our player's (outfielder Jordan Schulz) parents, runs this (G&S Marina) and donated the \$680 fishing trip to raffle off," Eul said. "They are awesome people, and put on an awesome trip up there, so we were really excited to get them involved."


"It was a rough day for fishing for the most part," team infielder Riley Nelson said, "and a lot of teams came out with no fish, but we raised around \$5,000 from the tournament. We gave 75 percent

of that back into the tournament for prizes."

"We had 43 teams show up, which was tremendous for our first year. We had a good showing of MSU Beaver parents and a great showing of alums. We were really happy with that, and can't wait to grow it more next year among the MSU alums," Eul said.

"Everything seemed to run smoothly," the coach said. "The event went really well! We got a lot of awesome feedback from everyone involved. They were all really excited about next year already, which is awesome for us and says a lot about the tournament."

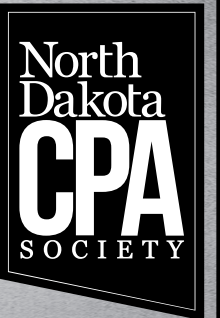
The team plans to hold the fundraiser annually.



Accounting and Business Students

# MILLION!

CPAs Can Earn Up to \$1 Million Dollars More in a Lifetime Versus Non-CPA\*



ndcpas.org/student

\*Becker estimates that CPAs can earn over \$1M more over their career than non-CPA accountants over a 40 year career





Photo by Jerusalem Tukura

MSU freshman Liam Hayden locks with an Augustana State opponent during a match last Sunday. Hayden lost his match, 6-0. MSU fell to Augustana State University, 50-0.



Photo by Jerusalem Tukura

MSU senior Jered Sublet takes down an Augustana State opponent. Sublet lost his match, 13-0.

## Beavers start strong, struggle through tough season

By Isaac Hunt  
Sports Writer

The Minot State University wrestling team is now 3-13 on the season, including an 0-5 NSIC record. Minot State has won all three of its duals at neutral sites, with the latest coming against LIU Post at the Kutztown Duals. With the 23-18 win, the Beavers went 1-4 at the dual meets hosted by Kutztown University on Jan. 20 and 21.

The Beavers had a nice start to the season in tournament play as Carlos Toledano, Keegan Berry and Jake Belland all won individual titles in the first two competitions of the season. Toledano, 174, won his title at the North Dakota State Bison Open and became just the second MSU wrestler in school history to win his weight class at this tournament, and the first since 1973.

In the second dual of the year, Minot State defeated ranked opponent Simon Fraser University by one point to go 1-2 at the Argo Duals in Montana.

The Beavers' second victory of

the season, with a score of 29-15, came against Truman State at Minnesota State University.

The most recent win, against LIU Post, halted an eight-dual losing streak that included two losses to the University of Mary and a loss at Jamestown College.

The Beavers lost by just six points (22-16) to Southwest Minnesota State at the MSU Dome Thursday night, but were shut out against Augustana on Sunday.

The Beavers and Mustangs were each fighting for their first win in Northern Sun competition. MSU dropped to 0-4 in the NSIC, while SMSU improves to 1-3. Although they didn't come out on top, head coach Evan Forde was pleased with how his team performed.

"It was a fun dual meet," Forde said. "We wrestled hard tonight, and our guys came out with a lot of fight. I think they did a good job of bringing some intensity, and using our conditioning to our advantage."

Southwest Minnesota State won in the first two matches to

take a 7-0 lead. The Beavers responded with two wins of their own to close in on the lead, making it 7-6. Jered Sublet, 141, and Cody Haugen, 149, each earned wins for Minot State; Haugen's coming in an exciting overtime fashion.

Down 1-0, Haugen went into the third period starting on the bottom. Just before time ran out, with his opponent, Cortez Arredondo, looking to add another point with riding time, the Minot, N.D. native completed a reversal with just three seconds left to wrestle to finish regulation tied 2-2. In overtime, both wrestlers were on the mat in position for a takedown. Southwest Minnesota State's coaching staff believed they had a win secured, but it was Haugen who completed the takedown first to win the match.

"I was just thinking that I have to try and make something happen to score some points at the end," Haugen said. "We've been working on those situations in practice and coach has done a

good job simulating how to deal with that."

Forde said he wasn't sure which wrestler had the better match, but when it came down to the end, Haugen had something Arredondo didn't.

"He found a way to win," Forde said. "Wrestling with heart and refusing to lose is what it's all about."

The other Beavers to win their matches were Toledano (174), in his first match back from injury, and Jake Belland (HWT) who pinned his opponent in the first period.

"It's huge to have Carlos back," Forde said. "He's a guy we always count on for a win. With Jake, it's really difficult for a true freshman to wrestle heavyweight in this conference and he is battling. He just keeps getting better."

On Sunday, Minot State lost 50-0 against the visiting Augustana University.

The Vikings earned bonus points in all but two matches. At 141, Sublet took Austin Jordan into overtime while Haugen gave

up just one point to Jacob Anderson. Head coach Evan Forde was pleased with how those two did in a dual that proved too tough for the Beavers.

"I thought down low we fought pretty hard," Forde said, "losing in overtime at 141 and losing by one point at 149 against some pretty good kids. We want to come away with wins at those weights and in those matches, but at least guys know, going into the regional tournament, that they can wrestle with those guys and have a chance of picking up some wins."

Forde also said his team needs to learn from tonight, and not give up as many bonus points the rest of the year. After four wins by fall from Augustana, Forde said he wants his team to take more pride in those situations.

Minot State will travel to St. Cloud State tomorrow. The Beavers will compete against the Huskies at 7 p.m.



Photo by Ashley Hill

MSU sophomore Dylan Gejdos (No. 37) begins a face off with an Arizona State opponent. The Beavers defeated the Sun Devils last Friday, 7-2.

## Men's hockey sweeps Arizona State

By Ashley Hill  
Comm 281

The Minot State Men's Hockey team swept Arizona State in two games last weekend at home. Minot State traveled to Arizona earlier this season to take on ASU at home. After getting swept by ASU earlier this season, MSU wanted some revenge.

Friday night MSU started off strong with a goal by Jeremy Johnson in the first minute of the game. Johl Swedlo scored with 17:56 left in the first period. Robby Moar made it 3-0 less than a minute later. The Beavers led the Devils 3-0 after the first period. Johnson scored again and the Devils answered back, making the score 4-1 during the second period. Kyle Lipinski scored and Craig Fournier scored twice during the third period. ASU also scored one in the third, making

the final score 7-2.

Saturday's game started a little slow with the score being 0-0 after the first period. Shain Scheschuk scored the first goal of the night, making the score 1-0. Morgen Martelle got the second score, giving the Beavers a 2-0 lead. Carey Morrison scored the third goal. Eric Bollefer scored the last goal in the second period to make the score 4-0 at the end of period two. Brett McNevin scored the Beavers' fifth and last goal of the game.

The Devils answered back at the end of the third period, scoring a goal for a final of 5-1.

The team plays Williston State this weekend, at Williston on Friday, and at home on Saturday at 7:35 p.m. at the Maysa. They are also at home for a two-game series on Feb. 17 and 18 against Midland.

## Women's hockey gets a win and a tie with LaCrosse, final games set for Feb. 17 and 18

By Ashley Hill  
Sports Writer

The Minot State University women's hockey team traveled to Wisconsin to play LaCrosse University last weekend.

Friday night's game ended

with a 3-0 win for the Beavers. Mackenzie Balogh scored twice and Angela Lothspeich scored once for the Beavers' victory.

Lauren Michayluk, Kendall Becker and Balogh (two) all scored for the Beavers Saturday

making the four goals that gave them the 4-4 tie against LaCrosse.

The women's hockey team will take on Midland Feb. 17 and 18 at the Maysa Arena. These are their last games of the season.

**Me Mexico**  
AUTHENTIC MEXICAN FOOD

701-858-0777  
301 40th Ave SW #101 • Minot, ND 58701  
Open 11 am - 10pm

"Best Authentic Restaurant In Town"  
READER'S CHOICE AWARD WINNER

MDN  
Readers' Choice

## 100% TUITION FREE COLLEGE

- 100% TUITION ASSISTANCE
- STUDENT LOAN REPAYMENT
- AFFORDABLE HEALTH, LIFE & DENTAL INSURANCE
- PAID TRAINING
- MONTHLY PAYCHECK
- SERVE YOUR COMMUNITY, STATE & COUNTRY

SFC Jory Stevenson: 701.340.6376

SSG Jesse Cruise: 701.580.4752

SGT Brandon Carrigan: 701.340.0636

#SOCIAL NETWORKS



**NORTH DAKOTA**

**NATIONAL GUARD**

NATIONALGUARD.com

**TEXT "NDGUARD" TO 95577**

### Rudolph named NSIC North Player of the Week

(MSU Sports Information) — MSU men's basketball player Tyler Rudolph was named the NSIC North Division Player of the Week on Jan. 23 after leading the Beavers to wins over Bemidji State and Minnesota Crookston.



Rudolph

Rudolph earned a double-double in both games, including a 33 and 17 performance against the Golden Eagles. Rudolph added four assists, a block and a steal to his weekend total of 53 points and 27 rebounds.

With the big weekend, Rudolph passed Minot State and NCAA Hall of Fame coach Dale Brown for 12th all-time on the MSU career-scoring list with 1,162 points.

### Aaron La Deaux named to another All-American team

(MSU Sports Information) — Minot State University senior Aaron La Deaux garnered another All-American First-Team honor as D2Football.com named the punter to its national list Thursday.



La Deaux

He is one of just two Northern Sun Intercollegiate Conference players named to the first team, joining Minnesota Duluth's offensive lineman Peter Bateman.

The D2Football.com All-America team is selected by input from the D2Football.com staff, sports information directors, coaches, and scouts from across the country.

### MSU names Cordova as head volleyball coach

(MSU Sports Information) — Minot State University Director of Athletics Andy Carter announced the university has hired Dana Cordova as its head volleyball coach.



Cordova

Cordova becomes the ninth head volleyball coach in school history.

"Cordova's experience in Division II and her energy, fit what we were looking for to lead our volleyball program," Carter said. "We have a lot of work to do to move our program to the desired level, but I have the utmost confidence in Dana's abilities."

Cordova spent the past six seasons at Tiffin University in

Tiffin, Ohio, compiling a 72-99 overall record including a 19-12 season in 2016. The 19 wins set the benchmark for Tiffin volleyball since moving to NCAA Division II. She coached 11 all-conference players and two all-region players during her six seasons at Tiffin.

"I look forward to building the volleyball program, both on the court and in the classroom," Cordova said.

Before her time at Tiffin, Cordova served as the head volleyball coach for one season at Montana State University-Billings and was the head volleyball coach and head golf coach at Otero Junior College.

The Trinidad, Colo., native earned her bachelor's degree in social science in 2000 from McPherson College in McPherson, Kan.



## Beaver Fight Song

**Onward Beavers, onward to win  
Onward Beavers, never give in  
'Cuz when we fight  
You know we'll always be  
A team of champions  
Pushin' on to victory.  
So onward Beavers, on to the test  
For the school we love the best.  
So, hail, hail, the gang's all here  
As we fight on to victory.  
Fight! Fight! Fight!**

## The Minot Daily News has routes available!

Small Neighborhood Routes, open in various areas of Minot that are great for college students!

- Early mornings
- Earn your own money
- Save \$\$ for college!

**701-857-1910**  
Don't wait, Call **TODAY!**

**301 4th St SE • Minot, ND**

## Job Opportunities from



**CNA:** Provide direct quality nursing care to patients under the supervision of the RN-LPN on duty and direction of the Nurse Manager. Must have current North Dakota CNA certificate. Full Time, Part-Time, and Limited Part-Time positions available at Trinity Homes **HIRING BONUS AVAILABLE** to qualifying applicants.

**RECORD-DOC IMAGING PROCESSOR:** Scan hard copy information into the electronic record, retrieve hard copy information from various settings to assure scanning takes place, answer incoming department phone calls and reconcile/track patient documentation against registration lists for select areas. Part-Time position available.

**EKG TECHNICIAN:** Perform all EKG diagnostic testing and scanning functions. Casual position available.

**LPN:** Responsible and accountable for assessment, evaluation, plan of care, monitoring and reporting changes to the physician and family. Will delegate selected nursing activities to other health care workers as well as supervise staff with the continuous evaluation of care. Full Time, Part-Time and Limited Part-Time positions available at Trinity Clinics and Trinity Homes. Must have current North Dakota LPN license to qualify.

**OFFICE ASSISTANT:** Perform clerical duties such as greeting patients, scheduling appointments, answering telephone calls, and collecting payments for clinics throughout Trinity Health.

**To see more listings or to apply, visit [www.trinityhealth.org](http://www.trinityhealth.org)**

Trinity Health is an  
EEO/AA/Disabled Individuals/Veteran Employer

Accident (minor)

Allergy

Athlete's Foot

Backache

Broken Bone

Cold

Cough

Diarrhea

Earache

Fever (moderate)

Flu

Headache

Ingrown Toenail

Insect Sting

Nausea

Neck Spasms

Pink Eye

Poison Ivy/Oak

Rash

Runny Nose

Sinus Infection

Sore Throat

Sprained Ankle

Strained Muscle

Upset Stomach

Vomiting

Wart

*From* **A** *to* **Z**

**Our Convenient Care  
Clinic has you covered.**

*Roxann  
Brown, FNP-C*



*Joe  
Smothers, DO*

*Carla  
Pease, AGPCNP-BC*



*Convenient Care Clinic*

**Mon-Fri 9 am to 6 pm**

**Sat-Sun 12 pm to 6 pm**

**Health Center – Medical Arts**

**400 E. Burdick Expy. • Minot**

**857-7817**

[www.trinityhealth.org](http://www.trinityhealth.org)

*For all your prescription needs stop by  
KeyCare Pharmacy located in Health Center – Medical Arts*