

Inside This Issue:

- 'Spectre' movie review, Page 4
- Krys Zorbaugh spotlight, Page 6
- Soccer, Page 8
- Cross Country, Page 9

Volume 97, Number 10 November 19, 2015

Minot, N.D. 58701 minotstateu.edu/redgreen

Native American flag-raising ceremony



Above: Post 271 Johnson/Good Iron Color Guard carry flags as part of a sunrise veteran/warrior flag-raising ceremony outside the Administration Building. The MSU Native American Cultural Awareness Club and the MSU Veterans Center sponsored the event last week.

Left: Cedric Baker and Duane Youngbird play the flag song during the flag-raising ceremony.

Photos by Koh En Chze (Ariel)

Campus Players presents 'Alice in Wonderland'

By Krys Zorbaugh
Comm 281

Minot State University's Campus Players presents 'Alice in Wonderland' in the Aleshire Theater, Dec. 9 - 11 at 7:30 p.m.; doors will open at 7 p.m. A matinee performance will be at 2 p.m. Dec. 12 with doors to open at 1:30 p.m.

MSU Campus Players brings Lewis Carroll's timeless tale of young Alice and her adventures in Wonderland to the Aleshire stage under the direction of MSU senior and Campus Players president, Krys Zorbaugh.

"I feel so fortunate to have the opportunity to combine my love of theatre with my affection for this classic story," Zorbaugh said. "I think I fell in love with Carroll's tale of 'Alice in Wonderland' when I was five or six. It was probably my first introduction to nonsensical poetry and to this day, continues to inspire my imagination and perhaps, even to see my world a little differently. To work with my peers in bringing to life all of the wonderful elements of such a classic is truly an honor."

Celebrating its 150th anniversary, Carroll's "Alice in Wonderland" is the story of young Alice (Annika Kraft) who fatefully falls through a rabbit hole and finds herself immersed

See Alice— Page 7

Voices on Campus

“What are you doing for Thanksgiving?”

Keith Ailes
Comm 281



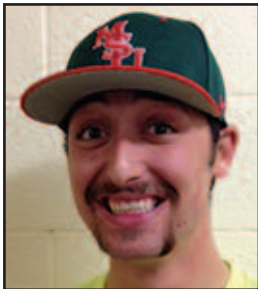
Celene Johnson
Criminal Justice

“Being from California, I am really lucky to be able to have my soccer team as a second family here to spend Thanksgiving with.”



Chandler Jacob
Geology

“Being from Minot, I’m going to stay here with my family and have a nice turkey lunch and do some goose hunting.”



Domenic Selmi
Business Management

“I am going home to my friends and family in Nevada and eat some awesome food!”



Kellie Piazza
Corporate Fitness

“I am excited to spend Thanksgiving cooking and having a great meal with my soccer teammates here at MSU.”



Quinn Williams
Broadcast

“I am staying in town working as an RA. I’m excited to give the residents who are around a fun and exciting break.”



Meagan Kawahara
Business Major

“I am staying here for Thanksgiving and am going to have dinner with my soccer team.”



Study Mate / Check Mate



live first

A First International Bank & Trust checking account has the perks you need for all expenses, including all-night study sessions.

Open an account today!
www.firstintlbank.com/checkmate

- ✓ Mobile App & Online Banking
- ✓ Mobile Check Deposit
- ✓ Person to Person (P2P) payments

News in Brief

MSU nursing student found dead in home

Minot State University mourns the death of Angila S. Wilder, a senior nursing student.

Wilder, 30, was found dead Friday morning at 519 16th Street NW.

According to the Minot Daily News, Wilder was a victim of apparent trauma and they suspect she was the victim of a homicide.

Cultural Celebration today in Student Center

The MSU Diversity Committee invites all students, faculty and staff to the annual Cultural Celebration today in the Student Center, second floor.

The event, part of International Education Week, celebrates cultures from around the world. Several students, faculty and staff will share an aspect of their home country or native culture through colorful displays, photos, cuisine, music and other performances.

Visit the many booths anytime between 11 a.m. and 1 p.m.

Native American guest speakers on campus today

At 10 a.m. today, AnnMaria De Mars, chief executive officer of 7 Generation Games, will discuss the company's video games that combine math, Native American history and adventure gaming.

At 1 p.m. Duane McGillis, community elder, will speak on the significance of powwow regalia and music.

Both of these events take place in the conference center on the third floor of the student center.

Elaheh Gorgin discusses inverse problems

Join the MSU Math Club today at 5 p.m. in Model Hall 330 for the monthly math talk.

Elaheh Gorgin, MSU assistant

math professor, will present "Regularization of Inverse Problems." The event is free and open to everyone.

Native American cultural dance presentation tomorrow

The Metis Prairie Steppers, a First Nations dance group from Portage la Prairie, Manitoba, will present the history of the Metis people and dance tomorrow at 11 a.m. in the conference center. Audience participation is encouraged. NACAC and the North Dakota Center for Persons with Disabilities, a Center of Excellence at MSU, co-sponsor this event.

For more information, email annette.mennem@minotstateu.edu or 858-3365.

NAC exhibits 'Fluid Nature' through Dec. 3

Artist Mali Vargas, Calgary, Alberta, creates large, vivid acrylic paintings utilizing the flow of the paint to depict natural, abstract paintings. Vargas' exhibit, sponsored by the Northwest Art Center, is on display in the Gordon B. Olson Library Gallery through Dec. 3 during regular library hours.

A public reception will be held Dec. 3 from 6:30 to 8 p.m. in the gallery.

Luminus concert set for Tuesday on campus

MSU faculty Dianna Anderson, piano, Erik Anderson, cello, and Jon Rumney, violin, will perform chamber music Nov. 24 at 7:30 p.m. in Ann Nicole Nelson Hall. Admission is free.

MSU Percussion Ensemble performs Nov. 30

The MSU Percussion Ensemble will perform in Ann Nicole Nelson Hall Nov. 30 at 7:30 p.m. with Avis Veikley, percussion

instructor, directing. This performance is free and open to everyone.

Jazz Ensemble to perform Dec. 1

The MSU Jazz Ensemble will perform Tuesday, Dec. 1, in Ann Nicole Nelson Hall at 7:30 p.m. David Rolandson, assistant professor of music, directs the ensemble. The concert is free.

NAC lecture series continues Dec. 2

The Northwest Art Center's 2015-16 lecture series continues Wednesday, Dec. 2, in Aleshire Theater at 7 p.m. as MSU instructor Rick Watson presents "Feathers and All: Some Ways Americans Read the Bible in the 21st Century."

The lecture is free and open to the public. An informal reception will follow the program.

This project is supported in part by a grant from the North Dakota Council on the Arts, which receives funding from the state legislature and the National Endowment for the Arts.

Surprise bingo Dec. 3

Join other MSU students Tuesday, Dec. 3, at 8 p.m. in the

Beaver Dam for surprise bingo. Prizes are wrapped so they are 'surprises' when won. Have some fun before finals! MSU Life sponsors this event.

String Ensemble concert planned for Dec. 4

The MSU String Ensemble will perform in Ann Nicole Nelson Hall at 7:30 p.m. with Erik Anderson and Jon Rumney directing. Admission is free.

Opera students to perform Dec. 5

Students from Music 115: Opera-Musical Production class, will perform a recital Saturday, Dec. 5, at 7:30 p.m. in Ann Nicole Nelson Hall.

Mark McQuade, associate professor of music, instructs the class. Admission is free.

'Messiah' performance on campus Dec. 6

The Heritage Singers, Voices of Note, MSU Concert Choir and area community members will perform Handel's "Messiah," one of the longest traditions at Minot State, Sunday, Dec. 6, at 4 p.m. in Ann Nicole Nelson Hall.

Minot Symphony Orchestra members and community musicians comprise the orchestra. Kenneth Bowles, MSU professor of music, will conduct.

The production is free of charge and open to the public. A freewill offering will support the Joseph Hegstad and John Strohm memorial scholarship fund, which funds voice students at Minot State.

For more information, contact Kenneth Bowles at kenneth.bowles@minot-stateu.edu.

MSU band performs Dec. 7

The MSU Band will perform Monday, Dec. 7, at 7:30 p.m. in Ann Nicole Nelson Hall under the direction of David Rolandson, assistant professor of music. Admission is free.

MSU's choirs to perform

MSU Singers, Women's Chorus and Concert Choir will perform Tuesday, Dec. 8, in Ann Nicole Nelson Hall at 7:30 p.m. The concert is free and open to everyone.

 Faith United Methodist Church 5900 Hwy 83 North • Minot, ND 58703 838-1540 Debra Ball-Kilbourne, Pastor www.faithumcminot.com	
Sunday School 10:00 am	Sunday Worship 11:00 am
Wednesday Activities @ 5:15 pm	

It's about the
grand dining
you'll love.

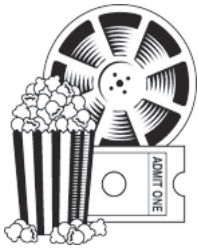
Steaks, Seafood, Pasta - and Mouthwatering Views.

Our restaurant offers Minot's largest steak selection, classic American heartland fare, plus fresh twists on Italian cuisine. Our award-winning Four Star Chef cooks up ever-changing delicious specials, so visit often for fresh tastes.

1505 N Broadway • Minot, ND 58703
701.838.7746 • 800.735.4493 • PrimoMinot.com







On Movies



by Alex Nelson
Staff Writer

Bond, James Bond otherwise known as 007 is back and is facing one of his greatest foes yet. "Spectre" stars Daniel Craig, Christoph Waltz, Lea Seydoux, Naomie Harris, Ben Whishaw, Dave Bautista and Ralph Fiennes. It is directed by Sam Mendes and rated PG-13 for intense action sequences, language and sexual content.

After the events of "Skyfall," Bond (Craig) is on the trail of a clue from his deceased boss. Against the order of M (Fiennes), Bond goes on a secret assignment that is somehow connected to his past. He discovers that a secret organization, led by the mysterious figure Franz Oberhauser (Waltz) and his top assassin Mr. Hinx (Bautista), is planning a scheme that will affect the entire world.

With the help of his trusted allies, Q (Whishaw), Eve Moneypenny (Harris) and Dr. Madeleine Swann (Seydoux), Bond will have to use his instinct and skills to stop the mysterious and deadly organization known as SPECTRE.

It is crazy to believe that this is the 24th film in the 007 series. This time around they bring back one of the oldest enemies James Bond has ever faced. To some die-hard fans of the series, this may cause

'Spectre'

some worry but, overall, the group SPECTRE in this film is just as menacing and terrifying as the original version of SPECTRE.

With his fourth appearance as 007, Daniel Craig once again is impressive as the secret spy trying to save the world. You still root for him whether he is either in a high-speed chase or jumping out of buildings, all the while acting like it is just another day in the office. Christoph Waltz, while playing the typical evil Bond villain, is menacing. While he is not as grand as Javier Bardem's villain in "Skyfall," you can't help but cringe in anticipation when Waltz speaks, as you wonder what he is going to do next.

Fellow actors Seydoux, Harris, Whishaw, Bautista and Fiennes also do a wonderful job holding their own with Craig's 007. The action sequences, while not as spectacular as the ones featured in "Skyfall," were very well done and exciting to watch. While James Bond is known to be a womanizer, I felt that it was a bit unnecessarily used in a few scenes, and that it could have been toned down a bit.

To many fans of the series, they are plenty of homages to the original films which stand out. However this movie is connected to the previous James Bond movies, and someone just seeing the film for the first time, might not understand what is going on. It would help the viewer if he or

she watched the previous films featuring Craig.

Overall I enjoyed the film, and if they are making another 007 movie, I can't see what they will come up with next. I personally rate "Spectre" 4 out of 5 Beavers.

Next week's review will feature "The Hunger Games: Mockingjay Part 2."

Today in History

- 1895:** Frederick E. Blaisdell patents the pencil.
- 1919:** U.S. Senate rejects Treaty of Versailles and League of Nations.
- 1928:** The first issue of Time magazine is published; Japanese Emperor Hirohito is on the cover.
- 1965:** Kellogg's Pop Tarts pastries are created.
- 1970:** The Golden Gate Park Conservatory becomes a California state historical landmark.
- 2013:** The 150th Anniversary of President Abraham Lincoln's 'Gettysburg Address' considered one of the greatest political speeches, is commemorated in the U.S. on the battlefield and by the Library of Congress.

(Courtesy of Brainyhistory.com)

SUDOKU

		1						2
8			4					
							8	6
		8	3	6	5			
		4			8	3	9	
					2	6		
	2					7		1
			5					3
4	6				1			

Level: Intermediate

Fun By The Numbers

Like puzzles? Then you'll love sudoku. This mind-bending puzzle will have you hooked from the moment you square off, so sharpen your pencil and put your sudoku savvy to the test!

Here's How It Works:

Sudoku puzzles are formatted as a 9x9 grid, broken down into nine 3x3 boxes. To solve a sudoku, the numbers 1 through 9 must fill each row, column and box. Each number can appear only once in each row, column and box. You can figure out the order in which the numbers will appear by using the numeric clues already provided in the boxes. The more numbers you name, the easier it gets to solve the puzzle!

Who's the SMARTEST STUDENT?
EVERY MONDAY
Trivia @ 7pm w/prizes
Karaoke @ 9pm

THE LANDING
BAR & BOTTLE SHOP
MINOT, ND

BAR & BOTTLESHOP
2015 N. Broadway

Liquor Store Everyday Low Prices!
Must be 21 to enter

Red & Green

152 Administration Building
Minot State University
500 University Ave. W
Minot, ND 58707

Phone: 858-3354

E-mail: redgreen@minotstateu.edu

ONLINE: www.minotstateu.edu/redgreen

Adviser: Frank McCahill

EDITOR

Courtney Holman

ASSISTANT EDITOR

Rachel Alfaro

ONLINE EDITOR

Josh Jones

SPORTS EDITOR

Jerusalem Tukura

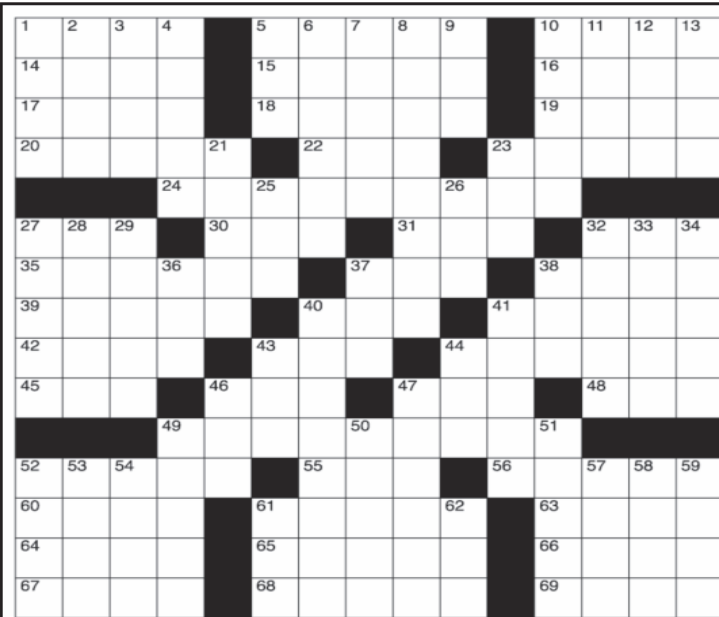
CIRCULATION

Josh Jones

Letter Policy: Letters to the editor must bear the writer's name, e-mail address and telephone number. Students must include year in school and major. Only letters from students, faculty or staff will be published. We will not print unsigned letters, and we reserve the right to edit all letters for factors such as clarity, punctuation, spelling and length. We reserve the right to refuse to print letters we consider libelous, superfluous or ridiculous. Please submit all letters before noon on the Thursday prior to publication. Students are limited to four letters for publication per semester. Letters may be e-mailed to redgreen@minotstateu.edu.

Views expressed by this publication are not necessarily those of the university, its administration, faculty or student body.

Red & Green is printed at Minot Daily News, Minot, N.D.

**CLUES ACROSS**

1. Powder mineral
5. Ten million (in India)
10. Culture medium and a gelling agent
14. Cain and ___
15. Bullfighting maneuvers
16. Baseball's Ruth
17. Venice beach
18. Infirm due to old age
19. Attentiveness
20. Mortify
22. Whale (Norwegian)
23. Family Bufonidae
24. "A Passage to India" author
27. Ocean
30. Dad's partner
31. Owned
32. Swiss river
35. Female golf star Gibson
37. Base
38. A way to summons
39. Acquit
40. Male parent

CLUES DOWN

1. W. Samoan monetary unit
2. Baby's feeding apparel
3. Queen of Sparta
4. Shut
5. Certified public accountant
6. Payment for release
7. Red twig dogwood
8. Baked in
9. Midway between E and SE
10. A way to detest
11. Mother of Cronus
12. In bed
13. Bolsheviks
21. Farro wheat
23. CNN's Turner
25. Farmers of America
26. Small amount
27. ___ and Venzetti
28. Hers in Spanish
29. Belongs to sun god
32. Expressed pleasure
33. Small terrestrial lizard

41. Brendan Francis __, author
42. Rattan
43. Aromatic hot beverage
44. Inflorescence
45. Former CIA
46. Make lace
47. Airborne (abbr.)
48. Thieving bird
49. H. Potter's creator
52. Frequency
55. Nothing
56. More lucid
60. Riding mount
61. Deducted container weight
63. Molten rock
64. In this place
65. Ancient upright stone slab bearing markings
66. Rumanian Mures River city
67. Mentioned before
68. An heir (civil law)
69. Without (French)

34. Regenerate
36. Own (Scottish)
37. The cry made by sheep
38. Chest muscle (slang)
40. Explode
41. Notice
43. Pitch
44. Run due to the batter
46. Fight referee declares
47. Alternate forms of a gene
49. Shifted in sailing
50. One who cables
51. Elaborate celebrations
52. Expresses pleasure
53. Carbamide
54. Persian in Afghanistan
57. 1st capital of Japan
58. Welsh for John
59. Radioactivity units
61. Tanzanian shilling
62. Hyrax

Use of tanning beds can negatively affect your health

By Caress Reyes
MSU Nursing Student

With winter soon upon us and the warm weather slowly but surely fading away, so is the sun-kissed skin that many work so hard to get every summer. Now that the sun will be hiding away, we can no longer sunbathe in order to achieve that perfect natural tan, but just because it is now a cold winter outside does not mean we want to lose our hot summer look.

Many of us will turn to indoor tanning during the winter months in order to maintain that glow. We look at tanning beds as an easy answer to our paleness prayers and we do not hesitate to use them. We take two to 15 minutes a few times a week (some of us more) to lay in a warm bed, then continue on with our days being happy about what that bed has done for our skin in such a short amount of time.

Now, if only we would think about what that tanning bed does to our skin over a longer period of time, we would not be so happy. Tanning beds use ultraviolet radiation, both UVA and UVB waves, that are set at an intensity greater than the sun at its highest point by two or three times.

Ultraviolet radiation has been proven to cause all three types of skin cancer: melanoma, squamous cell carcinoma and basal cell carcinoma. Individuals who use tanning beds are two and a half times more likely to

develop basal or squamous cell carcinoma and, although melanoma, the deadliest type of skin cancer is rare, its incidence is on the rise.

There are approximately 3.5 million cases of squamous cell and basal cell skin cancers and 75,000 cases of melanoma skin cancer diagnosed per year. Of these cases 380,000 are said to be caused from indoor tanning. Using tanning beds at a young age and exposure frequency to tanning beds greatly increases an individual's risk for developing skin cancer.

Factors that can influence the frequency of one's use of a tanning bed can be determined on how tan you would like to become or how many sessions you can afford. Tanning salons often offer deals that are alluring and affordable. For example, some tanning salons have been known to have sales promoting 25 consecutive tanning visits for \$25. That could potentially be one dollar for each visit. With each of these visits to the tanning bed, you are increasing your chance of developing skin cancer, every single time with every single dollar.

Ultraviolet radiation not only causes skin cancer, it can also cause premature aging of your skin making it rough and wrinkled. It also has the potential to harm the eyes by

causing cataracts, a clouding over the clear lens of the eye making it difficult to see, or cancers of the eye.

There is a new term going around call "tanorexia," which describes an individual who is dependent or addicted to tanning. Although this term has not been classified as an official disorder by the American Psychiatric Association Diagnostic and Statistical Manual, it shares some similar traits as traditional substance dependence. Those who are said to be dependent on tanning often report that their tanning may be out of control, they feel tranquil after a tanning session, they are always dissatisfied with their natural skin, tanning no longer relieves stress like it used to and they often tan so much they cannot always afford the amount of tanning sessions as they would like, even with the low prices. Do any of these sound familiar?

Although many of us have heard about the risks of indoor tanning, we chose to ignore the facts and continue to expose ourselves to the dangers it may cause. I am unsure if we do it because we believe we are invincible, or if it is because we believe that looking tan and having that glow outweighs

See Tanning — Page 7

Tuesday
SOUP
Bread & Conversation

Free soup lunch for MSU students
Every Tuesday
11:30 a.m. – 1:30 p.m.
Multicultural Center
1st floor, Student Center
SPONSORED BY
LUTHERAN CAMPUS MINISTRY

Thinking about studying abroad?

Don't wait until it is too late!

Visit your Study Abroad Coordinator today!

Learn more about Study Abroad opportunities at:
minotstateu.edu/international

Student Spotlight ...

Krys Zorbaugh

By Caitlin Dupras
Comm 281

Krys Zorbaugh is a senior majoring in theater arts at Minot State University. In conjunction with her graduation requirements, she was recently tasked with presenting a senior project – something that would have personal relevance, be a great résumé builder and also showcase what she has learned during her tenure at MSU.



Zorbaugh

Zorbaugh chose to write and perform her first one-act play, "Mercy." The work was based on true details surrounding events of her troubled past and her brother's traumatic death. Zorbaugh described the play.

"It is a provocative, autobiographical exploration of conscience," she said.

Zorbaugh wrote the piece with hopes of making the audience ask questions about abuse, disabilities and the meaning of death with dignity. The author/actor present-

ed her reading to the public for free, and welcomed a large audience. Rick Watson, MSU communication arts and music instructor, called the performance "amazing" and "wonderful."

"It was a wonderful night for the theater and Minot State, as a university," he said. "Krys did a great job showcasing her talents and striving to challenge her audience and herself."

Zorbaugh has written several short plays and has received the Irene Ryan nomination three times. This nomination allowed her to represent Minot State as a theater student at the regional KCACTF Festival where she competed against other actors for the distinction of a awarded scholarship.

Plays she has acted in include "The Crucible", "Waiting for Lefty," "Tartuffe," "Bus Stop," "A Christmas Carol," "Deadman's Cell Phone," "Circle Mirror Transformation" and "A Midsummer Night's Dream." She said one of her favorite plays is "Who's Afraid of Virginia Woolf?" by Edward Albee.

Zorbaugh will make her direct-

ing debut in December when she directs Lewis Carroll's "Alice in Wonderland." The performance, a Campus Players fundraiser, runs Dec. 9-12 in Aleshire Theater.

Zorbaugh started college with the intention of going into the medical field. However, the 2011 flood in Minot changed her outlook on life, and she chose to follow her passion into theater.

Born in California, she has deep roots in the Midwest. Her family is originally from Cannon Falls, Minn., so she is well-accustomed to the winters, culture and ways of this locale.

She enjoys theater, Russian literature, writing, playing guitar and bass guitar.

Zorbaugh's husband is George, and she has two granddaughters.

"I went from single with cats to married and a grandma," Zorbaugh said.



Photo by Koh En Chze (Ariel)

Krys Zorbaugh (center) poses with fellow members of Campus Players before the screening of "The Rocky Horror Picture Show."

WE ♥ FOOD! AND WE KNOW YOU DO, TOO!

Happy Thanksgiving in a new way!
sliced turkey, provolone cheese and baby arugula
with cranberry chutney and goat cheese spread

CRANBERRY TURKEY CIABATTA

available Nov. 16-25 for only \$3.29 + tax.



BUCKSHOTS

First floor, Student Center • 10:30 A.M. to 2 P.M., M-F



Introducing the mindful plated meal
BIG FLAVOR • FULL PLATE • CHOICE

*Our approach to making it easy for you
to enjoy a healthier lifestyle, for only \$6.95 + tax*

A different meal every day, Monday - Thursday!

BUCKSHOTS

First floor, Student Center • 10:30 A.M. to 2 P.M., M-F



Minot State Dining
For weekly rotation and menus

mindful
enjoy health!

Tied fleece blankets



Photo by Koh En Chze (Ariel)

Students cut and tie two sheets of fleece together to create a tie blanket. MSU-Life sponsored the event last week in the Student Center.



Photo by Koh En Chze (Ariel)

Ariel Zannou makes strips at the end of his fleece so he can tie them together to create a blanket.

... Tanning continued from page 5

the possibility of developing skin cancer, or because we truly are addicted to tanning.

Whatever the reasons may be, all I know is that evidence proves there is a link between indoor tanning and skin cancers, and that there is a way to prevent it.

... Alice continued from page 1

in a wondrously fantastic world of clever creatures and a hot-headed Queen of Hearts (Madison Curtiss.) Lopsided logic and poetry collide with curiosity to create a surreal dreamscape filled with imaginative possibilities.

Well-known and beloved characters such as the White Rabbit (Krista Sipin), Cheshire Cat (Casey Feldner,) Tweedle Dee and Tweedle Dum (Mercedes Elliott, Jaryn Homiston), Humpty Dumpty (Brenna Heupel,) along with the Mad Hatter (Connor Donovan) and the March Hare (Amanda Mogen), the Red and White Queens (Erin Kampen, Amanda

Kraft) and more, all do their part to beguile, confuse, challenge and even guide Alice on her journey through Wonderland.

MSU Campus Players is the oldest student-run organization at MSU. Since 1923, MSU Campus Players has been promoting theatre arts through performance and community engagement.

"Alice in Wonderland" is an all-ages production. Admission is \$6 adults, \$5 for seniors, students and children under 12. Reservations begin Nov. 25 and are strongly recommended. For questions or more information about this event, or to make reservations contact the Aleshire ticket box office at 858-3172.

Annual KMSU Auction set for Dec. 3

The Minot State University Broadcasting Department will host the 17th-annual KMSU Auction Thursday, Dec. 3. The auction begins at 6:30 p.m., with a preshow starting at 5 p.m. The auction will be aired on the local access Channel 19.

Viewers will have an opportunity to bid on items by calling in, and the highest bidder will get the package. The department has collected community donations for this auction.

To see a full list of packages available, visit kmsuauction.com.

Minot Daily News

ALL ACCESS

WIN WIN WIN

SUBSCRIBE TODAY

FOR THE ALL ACCESS FEATURE OR REGISTER YOUR CURRENT PRINT SUBSCRIPTION ACCOUNT TO BE ENTERED FOR YOUR CHANCE TO WIN!!

TO REGISTER/SUBSCRIBE

WWW.MINOTDAILYNEWS.COM/ALLACCESS



Lenovo

ThinkPad
i7 Quadcore
Processor - 15.6"
Windows 8 - 500 Gig





A SPECIAL THANKS TO OUR SPONSOR!



Minot Daily News
www.minotdailynews.com

No purchase necessary to enter and win. Promotion begins October 18, 2015 and ends December 31, 2015. Please go to http://extras.minotdailynews.com/Minot_Subscription/minot_access.asp for official rules.



Junior midfielder Brianna Ramsey controls the ball against Winona State in NCAA Division II National Tournament first-round action. The Beavers defeated the Warriors, 1-0, in overtime. The win advanced the Beavers to round two.

Photo courtesy MSU Sports Information

Soccer team gets first-ever NCAA DII national tournament win; lose in round 2

'Ninja' strike lifts Beavers

(MSU Sports Information) — Minot State University's Ninfa Ramirez (Jr., F) scored with 1:38 to play in the first overtime, lifting the Beavers to their first-ever NCAA Division II National Tournament win Friday.

"Ninja" as she is known by her teammates, turned and lifted a shot 20-yards out that found the top, right-hand corner of the net and sent the Beavers into a frenzied post-match celebration.

"Normally I try to wait a little because people play so far back and give me distance, so I'm waiting until someone moves up," Ramirez said. "But that wasn't working because they were on me all the time, playing really tight. (On the game winner) I just turned, saw some space and hit it. I couldn't see it at all, but I saw the net ruffle and knew it was in. It's such a great feeling."

Ramirez's team-leading seventh game-winning goal of the season helped MSU top Northern Sun Intercollegiate Conference foe

Winona State 1-0 in overtime in the first round of the Central Region Tournament at Central Missouri's Jennies Field.

"I feel good," MSU head coach Jason Spain said. "I really wanted to get the first one, get it off my back. We set the school record for wins and got out of the first round. I feel pretty good."

The win broke the Beavers record for wins in a season and MSU improved to 16-4-2. Winona State finished at 13-6-2. Minot State advances to take on No. 1 seed Central Missouri Sunday at noon.

The game was mainly played in the middle of the field as the team combined for just 19 shots and 11 shots on goal. The Beavers put pressure on early and outshot the Warriors 6-2 in the first half, but didn't have many quality chances.

"They were taking away the entry balls, even to Ninja's feet," Spain said. "We couldn't get good crosses on them from our right side."

Part of the lack of great chances

was a constant tight marking and double-teams on Ramirez, who scored her 16th goal of the season. But in overtime, Ramirez turned and found space as the double team didn't arrive in time. Her lofted shot tucked just under the post on the near side in the 99th minute.

"The second defender wasn't there," Spain said. "They had a second defender on her just about every time, but it didn't get there in time on that one. I saw her look over her shoulder and when it didn't come, she saw the opening. It was a class shot."

While MSU's goalkeeper Celene Johnson (Sr.) wasn't pressured much, she made a key save in the first half, sprawling to her right to stop a point-blank try and corralled multiple long balls sent into the box in the second half. She improved on her team record for wins, improving to 15-4-1 on the season.

"Steady is the word," Spain said of Johnson. "She didn't drop
See Soccer — Page 9

Volleyball finishes season on the road

By Isaac Hunt
Sports Writer

Playing a tough first two sets (21-25, 26-24) the Minot State volleyball team was tied at one set apiece going into the third set in its first match of the weekend. During that set, Minnesota, Crookston was able to pull away and win, 25-8. In the fourth set the Beavers bounced back a bit, but the Golden Eagles ended the match winning, 25-19.

In the second-to-last match of the season, MSU was out-hit 55 kills to 43 and finished with an attack percentage of .096 compared to that of UMC's .271. In the second set, when Minot State won, the team hit .343. During the third set, when the Beavers were outscored by 17 points, they hit -.161.

There was high-level individual play from the Beavers, as three players finished with 10 or more kills. Leading the team with 11 kills was Shaunessy Dauwalder (MH, Jr.) who also had a team-high attack percentage of .364. Three athletes also finished with a team-high 14 digs including Mallory Sall (OH, Sr.) who matched Dauwalder's 11 kills. Also finishing with 14 digs was assist leader Kelsey Dewulf (S) who tallied 32 assists.

Despite putting up three well-fought sets in the match against Bemidji State, the Minot State University volleyball team could not come out on top in its final

game of the season.

Falling 24-26, 21-25 and 19-25, the MSU Beavers were not an easy team to defeat Saturday as they were only out-hit 38 kills to 34.

Bemidji State won the game with two key individuals in Jessica Yost and Amanda Tronick, who finished with 16 kills and 12 kills, respectively. Tronick also ended the game with three blocks and 10 digs.

Mallory Sall led the Beavers with 10 kills. Sall ends her career with the Beavers with the third-most kills in MSU history. Brileigh Boyce (OH, RFr.) also played well offensively with eight kills.

Shaunessy Dauwalder helped MSU defensively with four total blocks. Dauwalder, along with Sall and Tarah Dabovich (MH, Sr.) will all end their careers in the top five ranking in assisted blocks in school history with Dabovich also in the top five in total blocks.

Taylor Butters (OH, Jr.) also played her final game as a Beaver. Butters finished with four kills and two blocks. This season, Butters finished with a career-high in all statistical categories.

Freshman Kelsey Dewulf led the team in assists with 29.

Minot State will look to bounce back next season with its remaining players and incoming class of recruits.

MEXICO
AUTHENTIC MEXICAN FOOD

701-858-0777
301 40th Ave SW #101
Minot, ND 58701
Open 11 am - 10pm

"Best Authentic Restaurant In Town"
READER'S CHOICE
AWARD WINNER

MDN
Readers' Choice

... Soccer continued from page 8

any balls and when all we are allowing is distance stuff, the key is not dropping any. She was really steady for us.

"Bello (Emily Rebelo, Sr., D) was really good and Bree (Breanne Hatfield, Sr., D) sucked it up as she was sick with the flu. She gutted this one out and played all 90-whatever minutes."

The Beavers' pressure in the first half helped Minot State have a 7-1 advantage in corner kicks and forced Winona State into 11 fouls compared to just seven for MSU.

Late goal ends Minot State's national run

MSU Sports Information) — For nearly 85 minutes, Minot State University's combination of strong defense and timely goal-keeping kept No. 1 seed Central Missouri at bay.

The Beavers allowed 15 shots with five on goal with a strong wind in their faces and another nine with four on keeper Celene Johnson (Sr.), but kept a clean sheet.

That all changed with a penalty.

MSU was whistled for a foul in the box and the No. 8 ranked Jennies took advantage. UCM's Taylor Thompson scored on the penalty kick in the 85th minute to power the Jennies to a 2-0 win over Minot State in the semifinals of the NCAA Division II Women's Soccer Central Regional Sunday at Jennies Field.

"We played how we wanted to play and really how we needed to play for 85 minutes," MSU head coach Jason Spain said. "They (UCM) are very good and with the wind, we needed to keep it in front of us. It's too bad, we thought we were headed for overtime, but for the penalty."

The loss ends MSU's record-setting year that included a team-record for wins in a season, the team's first-ever win in the NCAA tournament and its highest seed in the regional.

"We have a lot to be proud of. I told the girls that after," Spain

said. "We had a great year. The difference is we need to move up to get that (first round) bye. It was a huge advantage for them to not have to travel and to rest and watch us play into overtime Friday. We are a little beat up and we were a step behind them, where we weren't in the regular season early in the year.

"That's out next goal and it's a big one."

The Beavers (16-5-1 overall) dodged a couple bullets early in the first half as Johnson made two key saves and caught or pushed away every one of the five shots on goal in the first 45 minutes. She make a huge sliding save on UCM's Julie Ireland in the first 10 minutes.

"Celene was very good again today for us," said Spain. "She caught just about everything which was a big key. She was active and did a good job of making the right decision. She had a good game overall."

MSU didn't muster much offensive push in the first half, mainly due to the wind, but partly due to a quick backline sent out by the Jennies. MSU had two shots in the first half and forced UCM's Ana Dilkes to make two saves. While the Beavers chose to mainly play defense in the first half, that mentality carried over too long into the second, according to Spain. MSU finished with just four shots and three on goal with the wind at their backs in half two.

"I was hoping we could carry more possession in the second half," Spain said. "We carried that defensive mentality just a little too long in the second half and were trying to just get it out instead of possessing it. Part of that was how (the Jennies) played defense."

UCM (20-2-1) finished off any comeback attempts for the Beavers with a second goal two minutes after the first as the Beavers were pushed forward. Jada Scott netted her 10th of the year with a long run in the 87th minute.

MSU got four shots from Ninfa Ramirez (Jr., F) and another from Emilie Rebelo (Sr., D).

Club hockey continues its winning streak

By Keith Ailes
Comm 281

The Minot State Hockey team is coming back home with a weekend sweep down in Arizona. The Beavers led the weekend off against Arizona State Thursday with a big win in a shootout, 7-6. The offense-

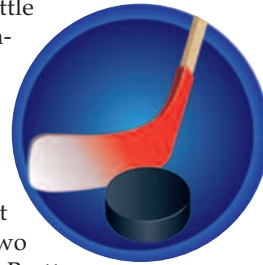
heavy battle was highlighted by a hat trick from Captain Brett Nespor, two

goals by Brett McNevin, one by Jeremy Johnson, and a top-shelf goal in shootout for Linden Lipinski.

Friday, the Beavers went down the road to play the University of Arizona. where the game went to overtime for the second night in a row. Cole Olson got the Beavers on the board halfway through the first period, but the Wildcats tied the game, 1-1, in the second. MSU answered back with a third-period goal by Kyle Lipinski, only to be answered once again by Arizona with eleven minutes left, making the game even, 2-2. For the second night in a row, Beaver goalie Connor Beauchamp shut the door in shootout and MSU picked up another win with a big goal from Dylan Gejdos.

To end the weekend, MSU continued to impress with an early tip in from Derrick Brooks and a second period go-ahead goal from Bob Pond after Arizona tied the game at one apiece. MSU held off the Wildcats to finish the weekend with a 2-1 win and an overall sweep to stay undefeated.

The Beaver Hockey team takes on Midland this weekend to keep building on this undefeated season.



Cross country teams finish season at NCAA Division II Regionals

(MSU Sports Information) — Minot State University's Allison Windish (Sr.) finished 59th as the top runner for the Beavers at the NCAA Division II Central Region Championships run Nov. 7 at Tom Rutledge Cross Country Course in Joplin, Mo.

Windish's finish put the Beavers in 22nd overall out of 31 teams, **Windish** topping four Northern Sun Intercollegiate Conference teams.

"It was her highest finish at regionals (59th vs. 82nd) and puts her potentially as an Academic All-American," MSU head coach Stu Melby said of Windish. "It was also our best team performance of the season. It was nice seeing Windish end her harrier career on a high note. She has come a long way in five years."

The Beavers finished with 636, just six points behind Central Oklahoma. MSU's team time was two hours, two minutes, 31.86 seconds — an eight-minute team season best — while Windish finished with a time of 22:52.15.

Minot State's men's team took 26th overall in the meet as junior

Joel Cartwright finished the 10K course in 33:58.45. He was 128th out of 176 runners.

"It was a course record for Joel," Melby said. "He struggled some during the race. He finished lightheaded and almost fainted. Joel ran a better race than conference, but I know it's not what he wanted."

The women finished with five personal bests with Windish's 23-second PR. She was joined by sophomore Emily Westlake who ran a 1:20 PR and finished with her highest regional finish at 140. Sophomore Patience Albertson had a 30-second PR, freshman Stephanie Huether ran a 1:30 PR and freshman Allison Klein finished with a 1:37 PR.

The only MSU runner who did not PR at the 6K race, Samantha Huether (Jr.), finished with a season-best time of 23:49.83 and was MSU's No. 2 runner at 106th place overall.

For the MSU men, Cartwright was the only runner who had competed at the 10K cross country event. Devan Shumway (Fr.) was 150th (34:56.67) at MSU's No. 2 runner.

"All of them have a lot to be proud of," Melby said. "This will help all of them to be motivated to work toward next year."



**JACK & JILL went
UP NORTH HILL
TO BUY
a pail of ale ...**

**Liquor Store
Everyday
Low Prices!**

**THE
LANDING
BAR & BOTTLE SHOP
MINOT, ND**

**BAR & BOTTLESHOP
2015 N. Broadway**

Must be 21 to enter



Photo by Jerusalem Tukura

MSU senior Amanda Sansaver dribbles the ball during a game against Pittsburgh State University on Friday in the Dome. The Beavers lost, 60-78.



Photo by Jerusalem Tukura

MSU freshman Shyla Carr attempts a layup in Saturday's game against Washburn University in the Dome. Washburn won, 78-88.

Slow starts lead to losses in season kickoffs

By Jerusalem Tukura
Sports Editor

The Minot State University women's basketball team kicked off the season with two games last weekend against Pittsburgh State University and Washburn University. MSU lost to Pittsburgh State, 60-78, on Friday. The Beavers started out sluggish and weren't able to catch up with the Gorillas. The first quarter ended at 6-19 with Pittsburgh in the lead. By halftime, the score was 19-39, Pittsburgh.

For the second half, there was a definite change in play by the Beavers. They came out of the locker room with more energy. They dropped in more points and played a harder defense, causing the Gorillas to miss 16 field goals, which reflected in the decrease in their shooting percentage from 48.2 percent in the first quarter to 27.3

percent in the fourth quarter.

The Beavers, on the other hand, had an improvement in shooting percentage from 27.6 percent in the first half to 42.9 percent in the second.

"We just weren't very energetic to start the game," Coach Sheila Green-Gerding said. "Second half, we were better, but we had already created ourselves such a big gap that it was hard to bounce back from that."

The fourth quarter came with more drive on the part of the Beavers. Two minutes into the fourth quarter, Carr made a two-pointer bringing the score to 41-62. Minot State added five more points before Pittsburgh State was able to add another. With two minutes left, the score stood at 52-72.

In the final 20 minutes, redshirt freshman Kari Clements (G.) scored

all of her points, boosting the Beavers' score and narrowing the score gap. Clements made a three-pointer and all five of her free throws.

Top scorers in the game were Sarah Lester (Sr., G.) with 13 points, Morgan Hunter (Jr., G.) with 6 points, Shyla Carr (Fr., G.) with 6 points and Savana Kingsbury (Sr., F.) with 6 points, as well.

Saturday's game was better in terms of energy, but it wasn't enough to earn a victory against Washburn University. Minot State lost to the Washburn Ichabods, 78-88.

The game started out slow once again, but the Beavers were able to pick up the tempo and play harder offensively in the second half.

"I think our entire team is having a hard time understanding our new offense," Green-Gerding said.

The Beavers played with such high energy in the fourth quarter that they were a point away from being in the lead with the score at 68-69 five minutes in. Unfortunately, their opponents also picked up the tempo and put more points on the scoreboard. Nonetheless, the Beavers continued to play hard. In the scramble to make more baskets, Alex Haley (Jr., G.), one of the top scorers of the game, fouled twice with only 40 seconds left in the game.

Haley made a total of 12 points, Kingsbury and Madison Wald (Fr., G.) put up 13 points each, and Clements scored 10 points.

"Overall, we need to make a better effort," Green-Gerding said. "We just need to continue to clean up offensively."

Gridders lose 2 on the road to finish season

Minot State University finished its football season with two road games.

The Beavers gave up two long touchdown runs to Minnesota Crookston in the third quarter allowing the Golden Eagles to run away with a 45-14 win over the Beavers in Northern Sun Intercollegiate Conference North Division football Nov. 7 in Crookston.

MSU's Ray Watkins (Jr., WR) scored the first touchdown for the Beavers, catching a 12-yard pass from Jose Escobar (Jr., QB) in the second quarter.

Jarvis Mustipher (Jr., RB) scored the Beavers' second touchdown on a 1-yard run, set up by a bad snap in punt formation by UMC and a subsequent blocked punt by Michael Jenkins (Jr., DB), giving the Beavers the ball at the UMC 1.

On Saturday, the Beavers took on perennial powerhouse Minnesota Duluth, where the Bulldogs defeated the Beavers, 36-10.

Minot State scored the game's first points with a touchdown pass by freshman quarterback Isaiah Weed to Marquise Cooper (Jr., DB).

Aaron La Deaux (Jr., P/K) gave the Beavers three more points with a 42-yard field goal in the second quarter.

The Beavers finished the season 1-10 overall, 1-10 NSIC and 1-6 NSIC North.

PUZZLE SOLUTION

T	A	L	C	C	R	O	R	E	A	G	A	R
A	B	E	L	P	A	S	E	S	B	A	B	E
L	I	D	O	A	N	I	L	E	H	E	E	D
A	B	A	S	E	S	E	I	T	O	A	D	S
				E	M	F	O	R	S	T	E	R
S	E	A	M	O	M	H	A	D	A	A	R	
A	L	T	H	E	A	B	E	D	P	A	G	E
C	L	E	A	R	D	A	D	B	E	H	A	N
C	A	N	E	T	E	A	R	A	C	E	M	E
O	S	S	T	A	T	A	B	N	D	A	W	
				J	K	R	O	W	L	I	N	G
A	U	D	I	O	N	I	L	S	A	N	E	R
A	R	A	B	T	A	R	E	D	L	A	V	A
H	E	R	E	S	T	E	L	A	A	R	A	D
S	A	I	D	H	E	R	E	S	S	A	N	S

SERVICES OFFERED

Students, faculty and staff can purchase CARMIKE CINEMAS MOVIE TICKETS at a reduced price in the MSU Bookstore.

STUDENT HEALTH CENTER. The MSU Health Center is here to serve you. It is open M-F and located in the basement of Lura Manor. Call for an appointment at 858-3371.

The **MATH CLINIC** provides free assistance for students enrolled in Math 102, 103, 104 and 240 only. Students in other courses must see their instructor for assistance. All sessions will be held in room 212 Model Hall unless otherwise indicated. For times, visit www.minotstateu.edu/mathcs/clinic.shtml.

MSU WRITING CENTER. The Writing Center is a free service for MSU students. Student tutors are ready to help you with your writing. Located in lower level of Olson Library. For more info and to make an appointment, go to minotstateu.edu/writingcenter.

NOTICES

STUDENT GOVERNMENT ASSOC. (SGA) meets Mondays, Nov. 23 and Dec. 7, Westlie Room, third floor, Student Center, at 7 p.m.

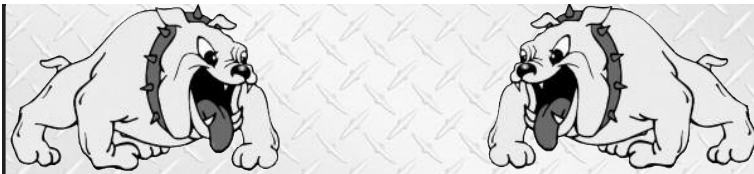
6	9	8	1	7	2	9	4	3
3	9	2	6	4	5	7	8	1
1	2	6	3	8	6	8	7	4
8	1	3	9	2	4	6	7	8
5	1	3	9	2	4	6	7	8
2	6	4	7	1	8	3	9	5
7	9	8	3	6	5	1	2	4
4	7	9	1	3	2	5	8	6
8	3	2	4	5	6	9	1	7
6	5	1	8	9	7	4	3	2

ANSWER:



MSU STUDENTS
by appointment only
Call 858-3371

MSU STUDENT HEALTH CENTER, LURA MANOR, SOUTH ENTRANCE



BULDAWG
Apartments

852-0760

or

833-5360

Independent...
We try
Harder!

Help Us Get the Word Out

If your club or department has an upcoming event and you would like an article about it in the student newspaper, contact us. We'll gladly do our best to get the word out.

858-3354

redgreen@minotstateu.edu

Red & Green

Minot State University's Student Newspaper

The Minot Daily News

has routes available!

Small Neighborhood Routes, open in various areas of Minot that are great for college students!

- Early mornings
- Earn your own money
- Save \$\$ for college!

701-857-1910

Don't wait, Call **TODAY!**

301 4th St SE • Minot, ND

INSIDE OUT

MSU's News &
Feature Show



Thursdays,
live at 5 P.M.
shown again
Fridays at 2 P.M.

TV Channel 19

Produced by MSU
Broadcasting students

Accident (minor)
Allergy
Athlete's Foot
Backache
Broken Bone
Burn (minor)
Cold
Cough
Diarrhea
Earache
Eye Infection
Fever (moderate)
Foreign Body
Flu
Headache
Ingrown Toenail
Insect Sting
Nausea
Neck Spasms
Poison Ivy/Oak
Rash
Runny Nose
Sinus Infection
Sore Throat
Sprained Ankle
Strained Muscle
Upset Stomach
Vomiting
Wart

From **A** to **Z**

Our Convenient Care
Clinic has you covered.

*Roxann
Brown, FNP-C*



*Joe
Smothers, DO*

*Carla
Pease, AGPCNP-BC*



TRINITY
HEALTH

Convenient Care Clinic

Mon-Fri 9 am to 6 pm

Sat-Sun 12 pm to 6 pm

Health Center – Medical Arts
400 E. Burdick Expy. • Minot

857-7817

www.trinityhealth.org



Job Opportunities from Trinity Health

CNA: Provide direct quality nursing care to patients under the supervision of the RN-LPN on duty and direction of the Nurse Manager. Must have current North Dakota CNA certificate. Full Time, Part-Time, and Limited Part-Time positions available at Trinity Hospital, Trinity Clinics and Trinity Homes. **HIRING BONUS AVAILABLE** to qualifying applicants.

ADMITTING REP: Register and admit patients to the hospital for inpatient and outpatient procedures as well as collect accurate and complete demographics. Will provide information to all customers, patients and co-workers as appropriate based on current regulations. Part-Time positions available.

CASHIER: Maintain accurate cash records by receiving, disbursing and recording all cash transactions. Will greet each customer and assist in finding items in the cafeteria as well as restock areas with food and supplies. Part-Time, Limited Part-Time and Casual positions available.

DIETARY AIDE: Assist in the food service to residents, portioning food, and table setting at Trinity Homes and Trinity Hospital. Will also assist in cleaning related duties and dishwashing. **HIRING BONUS AVAILABLE** to qualifying applicants. Full Time, Part-Time and Limited Part-Time positions available with flexible hours.

LPN: Responsible and accountable for assessment, evaluation, plan of care, monitoring and reporting changes to the physician and family. Will delegate selected nursing activities to other health care workers as well as supervise staff with the continuous evaluation of care. Full and Part-Time positions available at Trinity Homes and Trinity Clinics. Must have current North Dakota LPN license to qualify.

**To see more listings or to apply,
visit www.trinityhealth.org**

Trinity Health is an
EEO/AA/Disabled Individuals/Veteran Employer