

Mission Statement

The Office of Institutional Research at Minot State University supports the university's planning and decision-making efforts so that the university can fulfill its larger mission. The office responds to requests from constituencies of the university in order to support decision making, assessment, policy analysis, effective management, projections and planning. It also responds to requests for information from outside agencies and other institutions and generates annual fact books and reports showing trends and comparisons to the North Dakota University System.

The goals of IR are to ensure that reports and analyses are accurate, timely and useful to Minot State University students, administrators, faculty and staff. To guarantee that MSU's mission is carried forward, the institutional research director works carefully to ensure that files dealing with student course and personnel data are as accurate and consistent as possible.

Accrediting Agencies

- ✓ **The Higher Learning Commission**
North Central Association of Colleges and Schools
30 N. LaSalle Street, Ste 2400, Chicago, IL (800) 621-7440
- ✓ **National Council for Accreditation of Teacher Education**
2010 Massachusetts Avenue NW, Suite 500, Washington, D.C., 20036-1023
- ✓ **National Association of Schools of Music**
11250 Roger Bacon Drive, Suite 21, Reston, VA 20190-5248
- ✓ **Council on Education of the Deaf**
Kent State University, Kent, OH 44242-0001
- ✓ **Council on Academic Accreditation of the American Speech-Language-Hearing Association**
10801 Rockville Pike, Rockville, MD 20852-3279
- ✓ **Council on Social Work Education—Baccalaureate level**
1600 Duke Street, Alexandria, VA 22314-3421
- ✓ **International Assembly for Collegiate Business Education**
PO Box 25217, Overland Park, KS 66225, (913) 631-3009
- ✓ **National League for Nursing Accrediting Commission, Inc.**
Broadway 33rd Floor, New York, NY 10006
- ✓ **National Association of School Psychologists**
PO Box 791089, Baltimore, MD 21279-1089
- ✓ **North Dakota Board of Nursing**
919 7th Street, Suite 504, Bismarck, ND 58504-5881

*Board of Regents
Executive Committee*

Executive Chair-----	David Reiten
Past Executive Chair-----	Kathy Aas
MSU President-----	David Fuller
Treasurer-----	Brian Foisy
Secretary-----	Marv Semrau
Chair-Elect-----	Valerie Bruels
Member-at-Large-----	Leslie Coughlin

*MSU Alumni Association
Board of Directors*

Executive Committee

Past President-----	Brenda Foster
Co-President-----	Linda Christianson
Co-President-----	Deb Schultz
Vice President for Promotions-----	Rob Anderson
Vice President for Events-----	Kelly Hayhurst
Vice President for Outreach-----	Angela Zerr
Director of Annual Giving and Alumni Relations-----	Janna McKechnie
MSU President-----	David Fuller

Members

Robert Anderson	Kelly Hayhurst	Angela Zerr
Amy Artz	Kelsey Holt	Mike Gietzen
Kristi Berg	Judy Kitzman	DelRae Zimmerman
Leslie Barney	Gloria Lockken	
Randy Burckhard	Lisa M. Olson	
Linda Christianson	Tonya Pearson	
Larry Eidsness	Alison Repnow	
Denise Faulkner	Chuck Repnow	
Greg Fjeld	Jan Repnow	
Brenda Foster	Deb Schultz	
Ryan Hertz	Ellen Simmons	

MSU Development Foundation

Board of Directors

Executive Director -----	Marv Semrau
President -----	Maynard Sandberg
Vice President-----	Tom Probst
Treasurer-----	Brian Foisy
Investment Advisory Committee-----	Tom Probst
Special Gifts Committee -----	Robert Sando
Development Strategies Committee -----	Karen Krebsbach
MSU President-----	David Fuller

MEMBERS

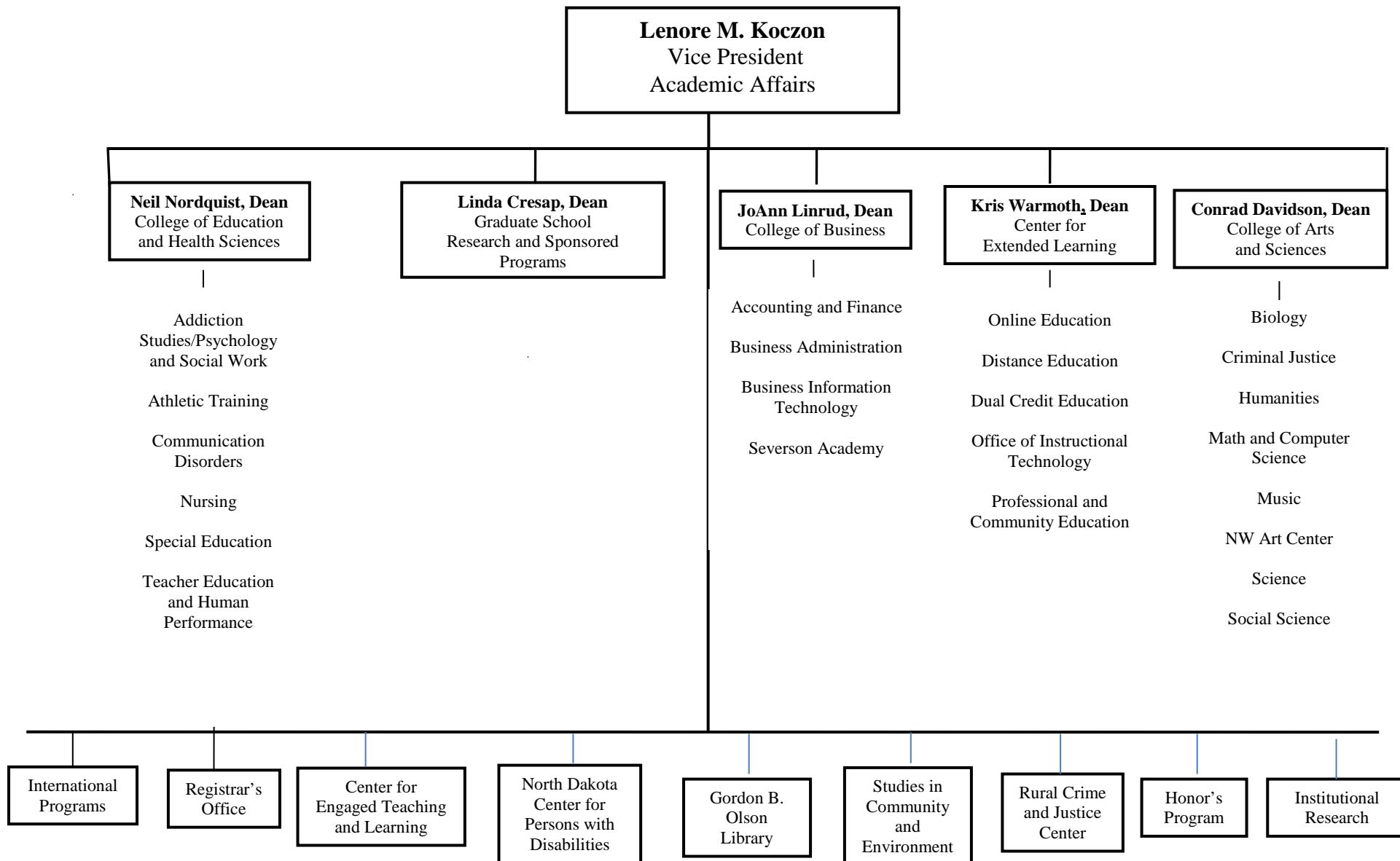
Kathy Aas	Ex-Officio
Jon Backes	Brian Foisy
David Gowan	David Fuller
Karen Krebsbach	Marv Semrau
Tom Probst	
Maynard Sandberg	
Robert Sando	
Doris Slaaten	
Myron Thompson	
Bruce Walker	

North Dakota University System

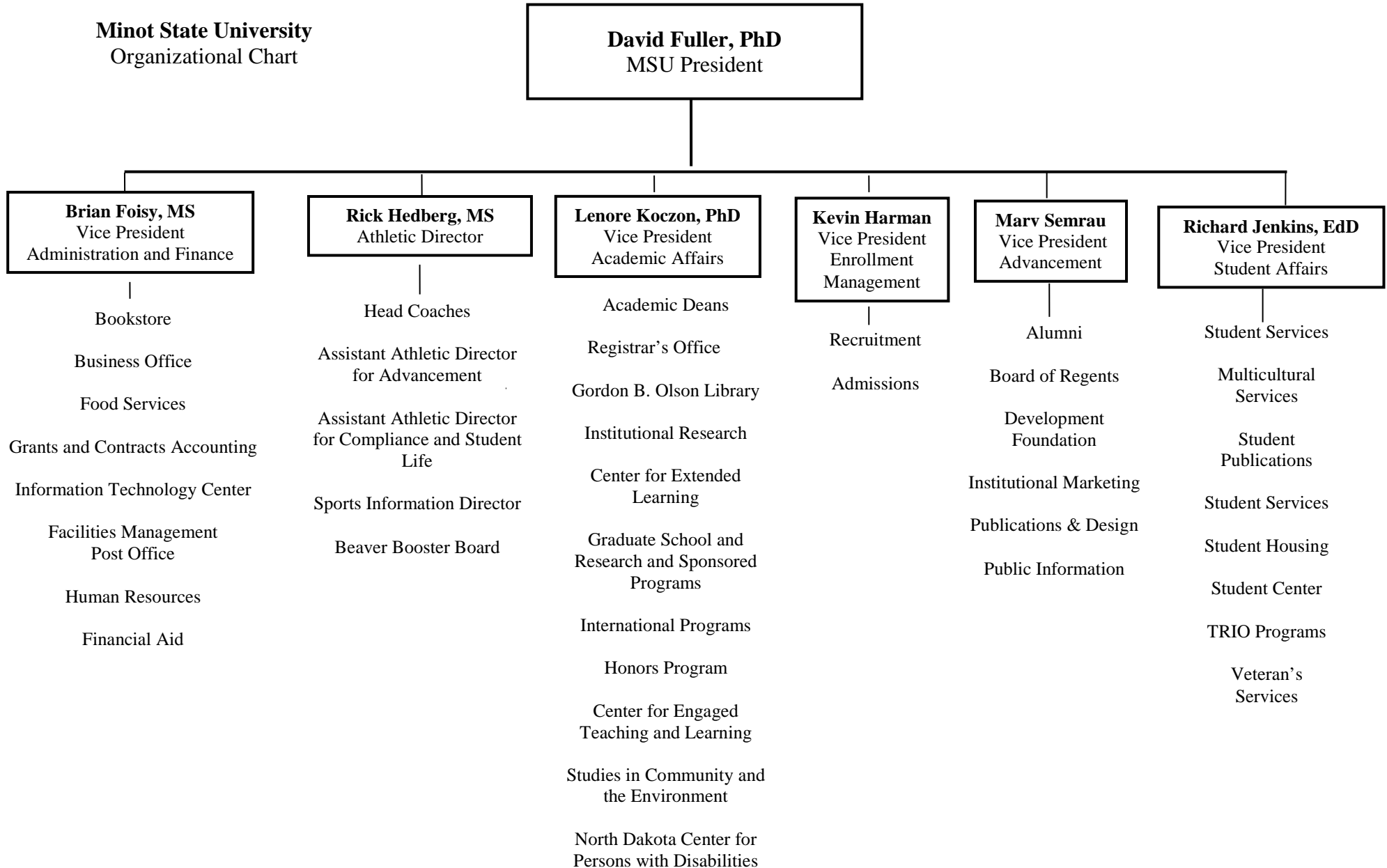
Chancellor	William G. Goetz
Vice Chancellor for Academic and Student Affairs	Michel Hillman
Vice Chancellor for Administrative Affairs	Laura Glatt
Vice Chancellor for Strategic Planning and Executive Director of The College	
Technical Education Council	Marsha Kroseng
Director of Public Affairs and Marketing	Debra A. Anderson
NDUS Chief Information Officer	Randall Thursby
General Counsel/Executive Secretary to the SBHE	Pat Seaworth
Director of Finance	Cathy McDonald
Academic Affairs Associate and Director of Research	Aimee Copas
Director of Financial Aid and Federal Relations Coordinator	Peggy Wipf
State Approving Agency Dir/Coordinator Multicultural Education	Rhonda Schauer
Director of Articulation and Transfer	Lisa Johnson
Director of NDUS Online	Robert Larson
Director of Financial Reporting	Robin Putnum
Director for ND College Access Challenge	Tim Mueller
Accountant	Sharon Schwartzbauer
Director for HE Consortium for Substance Abuse Prevention	Jane Vangsness Frisch

<http://www.ndus.edu/system/ndus-staff-directory/>

Sourced: September 2011



Minot State University
Organizational Chart



Administrative Offices

Academic Affairs

Vice President for Academic Affairs -----	Lenore Koczon
Executive Director, ND Center for Persons with Disabilities -----	Brent Askvig
Director, Financial Aid -----	Dale Gehring
Director, Library -----	Stephen Banister
Registrar -----	Rebecca Porter
Director, Institutional Research -----	Cari Olson

College of Arts and Sciences

Dean -----	Conrad Davidson
Chair, Division of Humanities -----	Linda Olson
Chair, Department of Mathematics and Computer Science -----	Laurie Geller
Chair, Division of Music -----	Kenneth Bowles
Chair, Department of Science -----	Ryan Winburn
Chair, Department of Biology -----	Christopher Keller
Chair, Division of Social Science -----	Dan Ringrose
Chair, Department of Criminal Justice -----	William Archambeault
Director, Honors Program -----	Lynne Rumney
Director, Northwest Arts Center -----	Avis Veikley
Executive Director, Rural Crime and Justice Center -----	Gary Rabe

College of Business

Dean -----	JoAnn Linrud
Chair, Department of Accounting and Finance -----	Patricia Fedje
Chair, Department of Business Information Technology -----	Lori Willoughby
Chair, Business Administration -----	Gary Ross

College of Education and Health Sciences

Dean -----	Neil Nordquist
Chair, Department of Communication Disorders -----	Leisa Harmon
Chair, Department of Teacher Education and Human Performance -----	Warren Gamas
Coordinator, Master of Education Program -----	Deb Jensen
Coordinator, Elementary Education Program -----	Lisa Borden-King
Coordinator, Physical Education and Human Performance Program -----	David Rochholz
Coordinator, Teacher Education Core -----	Rebecca Anhorn
Director, Advisement and Field Placement -----	Elaine Larson
Chair, Department of Addiction Studies/Psych/Social Work -----	Donald Burke
Director, School Psychology -----	Casey Coleman
Director, Addiction Studies -----	Vicki Michels
Director, Social Work -----	Charlene Bruley
Chair, Department of Nursing -----	Nicola Roed
Chair, Department of Special Education -----	Alan Ekblad

Graduate School and Research and Sponsored Programs

DeanLinda Cresap

Student Affairs

Vice President for Student Affairs -----Richard Jenkins
 Director, Multicultural Support Services -----Annette Mennem
 Director, Student Health Center-----Caren Barnett
 Director, Student Life-----Lisa Eriksmoen
 Director, Student Center-----Leon Perzinski
 Director, Student Success Center -----Lynda Bertsch
 Coordinator, Student Activities -----Vacant
 Coordinator, Disability Services -----Evelyn Klimpel
 Student Publications -----Frank McCahill
 Nurse Practitioner -----Heidi Peterson
 Counselor, Student Development -----Nancy Mickelson
 Coordinator, Fitness Center-----Paul Brekke
 Coordinator, Residence Life-----Heather Stroupe-Smith

Administration and Finance

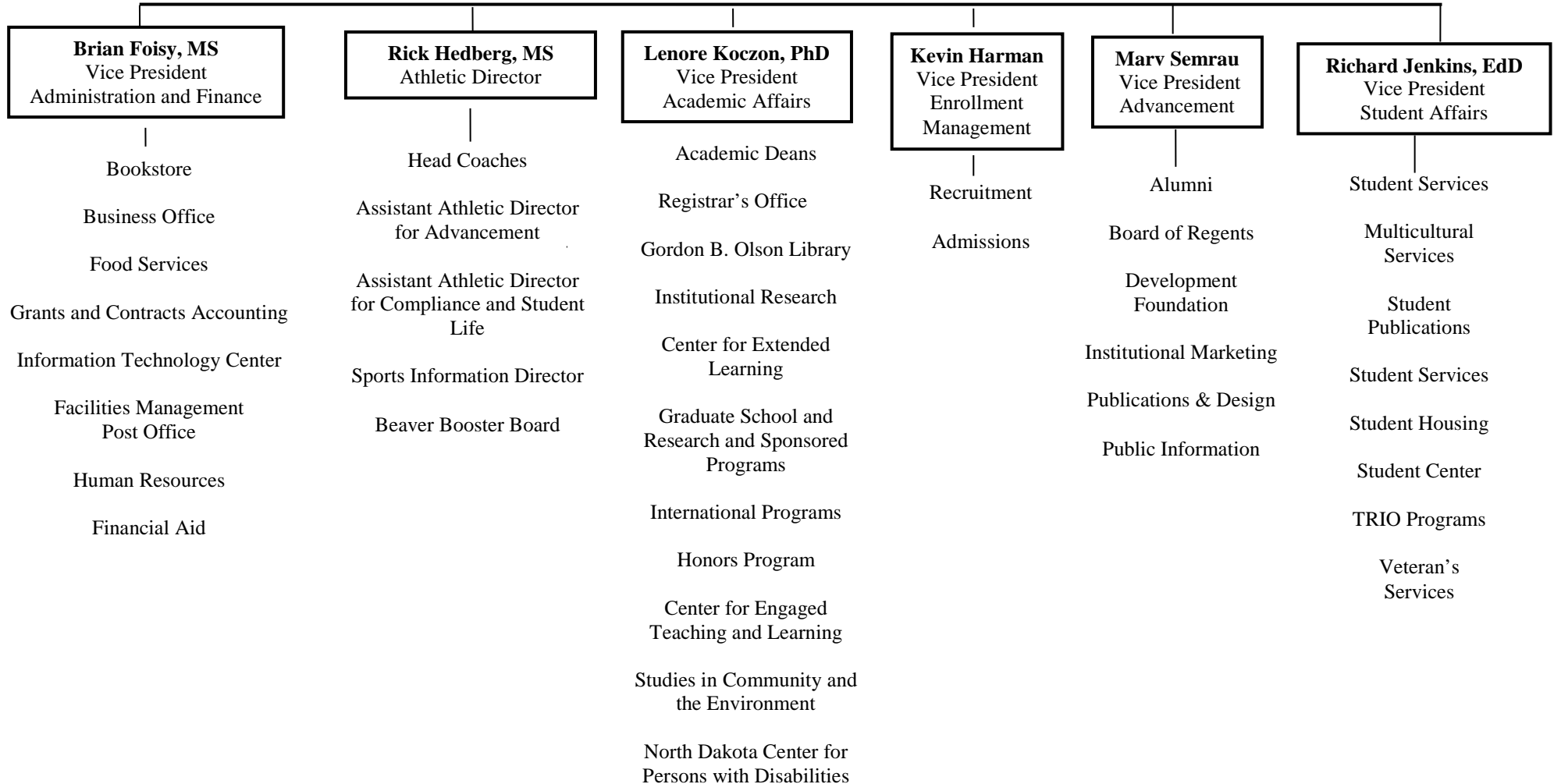
Vice President for Administration and Finance-----Brian Foisy
 Assistant Vice President, Business Services Controller -----Jonelle Watson
 Assistant Vice President, Facilities Management ----- Roger Kluck
 Director, Publications and Design Services -----Doreen Walk
 Director, Student Center-----Leon Perzinski
 Director, Information Technology Center -----Cathy Horvath
 Manager, Bookstore-----Gerri Juna

University Athletics

Director, Athletics-----Rick Hedberg
 Head Women's Basketball-----Sheila Green Gerding
 Head Men's Basketball -----Peter Stewart
 Head Men's/Women's Golf-----Dwight Farrell
 Head Volleyball -----Travis Ward
 Head Women's Soccer -----Jason Spain
 Head Cross Country-----Stu Melby
 Head Football -----Paul Rudolph
 Head Softball-----Bill Triplett
 Head Baseball -----Brock Wepler
 Head Wrestling -----Robin Ersland

Minot State University
Organizational Chart

David Fuller, PhD
MSU President



*North Dakota University System
Fall Enrollment by Headcount*

Institution	2001	2002	2003	2004	2005	2006	2007¹	2008	2009	2010	2011
Bismarck State College	3,044	3,168	3,430	3,546	3,370	3,477	3,591	3,788	4,020	4,177	4,392
Dickinson State University	2,101	2,326	2,461	2,479	2,516	2,572	2,670	2,730	2,767	2,688	2,346
Lake Region State College	1,308	1,340	1,473	1,464	1,471	1,508	1,520	1,657	1,702	1,913	2,056
Mayville State University	755	746	817	897	912	832	769	789	887	982	970
Dakota College at Bottineau	526	609	620	602	523	605	637	655	748	863	812
Minot State University	3,515	3,625	3,825	3,851	3,798	3,712	3,424	3,432	3,649	3,866	3,657
ND State College Of Science	2,292	2,439	2,468	2,481	1,852	2,490	2,417	2,545	2,651	2,833	3,127
North Dakota State University	10,538	11,146	11,623	12,026	12,099	12,258	12,527	13,229	14,189	14,407	14,399
University of North Dakota	11,764	12,423	13,034	13,187	12,954	12,834	12,559	12,748	13,172	14,194	14,697
Valley City State University	1,005	1,022	998	944	1,035	1,037	982	1,019	1,083	1,285	1,384
Williston State College	748	770	871	937	947	912	731	850	949	932	993
Total	37,596	39,614	41,620	42,414	41,477	42,237	41,827	43,442	45,817	48,140	48,833

Source: North Dakota University System Office: Fall Enrollment Report <http://www.ndus.edu/information/>

Data Source: North Dakota University System. Headcount is the total number of students enrolled regardless of the number of credit hours. NDUS reports the headcount as the number of students enrolled on the 4th week of classes in the term.

¹ "Enrollment at some institutions includes students who were registered but had not made payment or been granted an extension based on documented good cause as of the census date. This includes 24 students at NDSU, 40 students at UND, 71 students at NDSU and 239 students at LRSC for a total of 374 students." (Creating a University System for the 21st Century, 2007 Fall Enrollments, November 2007, p. 1)

*Enrollment by Classification and Gender Fall 2011
Headcount 2008, 2009, 2010, 2011*

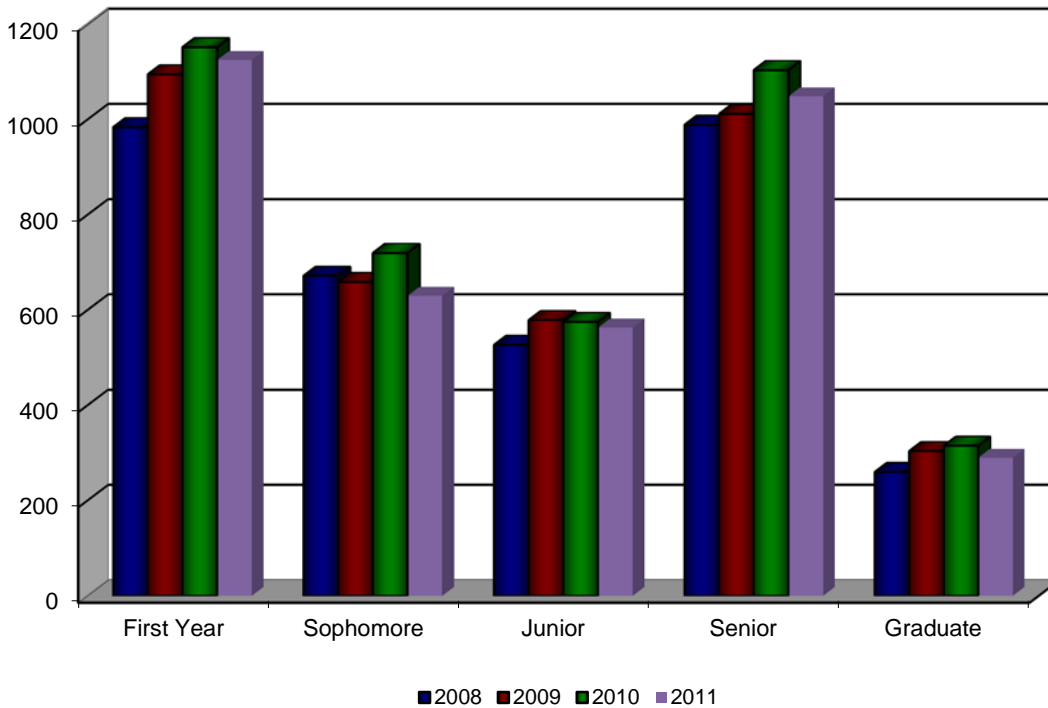
	Male				Female				Total			
Undergraduate	2008	2009	2010	2011	2008	2009	2010	2011	2008	2009	2010	2011
First Year	415	469	503	524	569	626	649	601	984	1095	1152	1125
Sophomore	276	245	284	228	396	414	436	402	672	659	720	630
Junior	175	216	216	218	352	363	359	345	527	579	575	563
Senior	366	346	365	359	623	666	739	690	989	1012	1104	1049
Total Undergraduate	1232	1276	1368	1329	1940	2069	2183	2038	3172	3345	3551	3367
Graduate	54	64	67	67	206	240	248	223	260	304	315	290
MSU Totals	1286	1340	1435	1396	2146	2309	2431	2261	3432	3649	3866	3657

Registrar's Office: Enrollment Report ID# NDUH2SRA pg 5 (4th Week Data)

* Totals include two freshmen who did not report gender. Data from 2005 was initial year of PeopleSoft data.

Total Students by Academic Status 2008-2011

Registrar's Office: Enrollment Report ID# NDUH2SRA pg 5 (4th Week Data)



Minot State University Enrollment Highlights
Fall 2011 to Fall 2010 Data

	Head Count			Full-time			Part Time			Total Scheduled Cr Hr		
	2011	2010	Change	2011	2010	Change	2011	2010	Change	2011	2010	Change
Freshmen												
Male	524	503	21	224	223	1	300	280	20	4631.00	4484.5	146.50
Female	601	649	-48	311	374	-63	290	275	15	6018.00	6865.5	-847.50
Total	1125	1152	-27	535	597	-62	590	555	35	10649.00	11350.0	-701.00
Sophomore												
Male	228	284	-56	194	250	-56	34	34	0	3097.50	3886.5	-789.00
Female	402	436	-34	348	367	-19	54	69	-15	5576.50	6016.0	-439.50
Total	630	720	-90	542	617	-75	88	103	-15	8674.00	9902.5	-1228.50
Junior												
Male	218	216	2	181	173	8	37	43	-6	2908.50	2853.5	55.00
Female	345	359	-14	290	290	0	55	69	-14	4675.50	4835.0	-159.50
Total	563	575	-12	471	463	8	92	112	-20	7584.00	7688.5	-104.50
Senior												
Male	359	365	-6	240	261	-21	119	104	15	4302.00	4495.5	-193.50
Female	690	739	-49	467	508	-42	223	231	-8	8199.50	8844.5	-645.00
Total	1049	1104	-55	707	769	-62	342	335	7	12501.50	13340.0	-838.50
TOTAL UNDERGRADUATES												
Male	1329	1368	-39	839	907	-68	490	461	29	14939.00	15720.0	-781.00
Female	2038	2183	-145	1416	1539	-123	622	644	-22	24469.50	26561.0	-2091.50
Total	3367	3551	-184	2255	2446	-191	1112	1105	7	39408.50	42281.0	-2872.50
TOTAL GRADUATES												
Male	67	67	0	23	26	-3	44	41	3	466.00	455.0	11
Female	223	248	-25	78	85	-7	145	163	-18	1542.00	1746.0	-204
Total	290	315	-25	101	111	-10	189	204	-15	2008.00	2201.0	-193
MINOT STATE UNIVERSITY TOTAL												
Male	1396	1435	-39	862	933	-71	534	502	32	15405.00	16175.0	-770.00
Female	2261	2431	-170	1494	1624	-130	767	807	-40	26011.50	28307.0	-2295.50
Total	3657	3866	-209	2356	2557	-201	1301	1309	-8	41416.50	44482.0	-3065.50

Registrar's Office: Enrollment Report ID# NDUH2SRA pg 5 (4th Week Data)

* FTE/Total refers to full-time equivalent of total credit hour production (Total undergraduate credit hours divided by 16 or Total graduate credit hours divided by 12). "Total credit hours" is the number of credit hours the full-time and part-time students enrolled in.

<http://www.csgnetwork.com/percentchangecale.html> FTE numbers were calculated by dividing total credit hours from first table by 15 for undergraduates and by 12 for graduates. Prior to 2006, the calculation was 16 for undergraduates and 9 graduates

*MSU Fall Enrollment – Headcount
1998 through 2011*

	1998	1999	2000	2001	2002	2003	2004	2005	2006	2007	2008	2009	2010	2011	%Chg
Undergraduates	2979	2982	2907	3326	3425	3593	3576	3547	3433	3140	3172	3345	3551	3367	-5.1%
Graduates	177	173	174	189	200	231	275	251	279	284	260	304	315	290	-7.9%
Total Enrollment	3156	3155	3081	3515	3625	3825	3851	3798	3712*	3424	3432	3649	3866	3657	-5.4%
Undergraduate Students															
Male Full-time	953	962	890	932	946	944	929	927	928	823	837	885	907	839	-7.4%
Female Full-time	1485	1450	1408	1564	1592	1568	1537	1546	1510	1404	1401	1415	1539	1416	-7.9%
Male Part-Time	202	177	197	323	307	427	425	401	373	330	395	391	461	490	6.2%
Female Part Time	339	393	412	507	580	654	685	673	620	583	539	654	644	622	-3.4%
Unknown	0	0	0	0	0	0	0	0	2	0	0	0	0	0	0
Graduate Students															
Male Full-time	5	6	10	8	5	6	5	28	21	24	23	24	26	23	-11.5%
Female Full-time	50	48	52	49	42	52	50	84	80	107	89	92	85	78	-8.2%
Male Part Time	22	21	28	42	45	48	44	27	36	33	31	40	41	44	7.3%
Female Part Time	100	98	84	90	108	125	176	112	142	120	117	148	163	145	-11.0%

Data Source: NDUHSRA- Headcounts and FTE Enrollments Pg. 5 Institution Totals.-Data provided by Registrar's Office 4th Week Official Enrollment Data – September 2011.
 Headcount indicates all students enrolled regardless of the number of credit hours for which they are enrolled (NDUS) * Includes two classified as unknown (1 full-time and 1 part time)
 Percentage Change= Subtract old value from the new value, then divide by the old value, multiply by 100 for percentage. $\text{New Value} - \text{Old Value} / \text{Old Value} * 100 = \text{Percentage Change}$
 (<http://www.csghnetwork.com/percentchange.html>)

*MSU Headcount (HC) and Full-time Equivalent (FTE)
1998-2011*

Graduate and Undergraduate Combined

Year	Headcount	% Change	FTE*	% Change
1998	3156	-4.0	2597	-4.8
1999	3155	0.0	2588	-0.3
2000	3081	-2.3	2491	-3.7
2001	3515	14.1	2739	10.0
2002	3625	3.1	2789	1.8
2003	3825	5.5	2839	1.8
2004	3851	0.7	2844	0.2
2005	3798	-0.8	2884	1.4
2006	3712	-2.3	2928	n/a
New FTE formula initiated in 2006				
2007	3424	-7.8	2730	-6.8
2008	3432	.23	2720.46	-0.3
2009	3649	6.3	2831.82	4.09
2010	3866	5.9	3002.15	6.01
2011	3657	-5.4	2794.60	-6.9

Data Source: NDUHSRA- Headcounts and FTE Enrollments Pg. 5 Institution Totals.-Data provided by Registrar's Office 4th Week Official Enrollment Data – September, 2011.

Headcount indicates all students enrolled regardless of the number of credit hours for which they are enrolled (NDUS)

Percentage Change= Subtract old value from the new value, then divide by the old value, multiply by 100 for percentage. New Value-Old Value/ Old Value * 100 = Percentage Change. (<http://www.csgnetwork.com/percentchange.html>)

Minot State University
*Student Enrollment Highlights: FTE/Total**
2008-2011

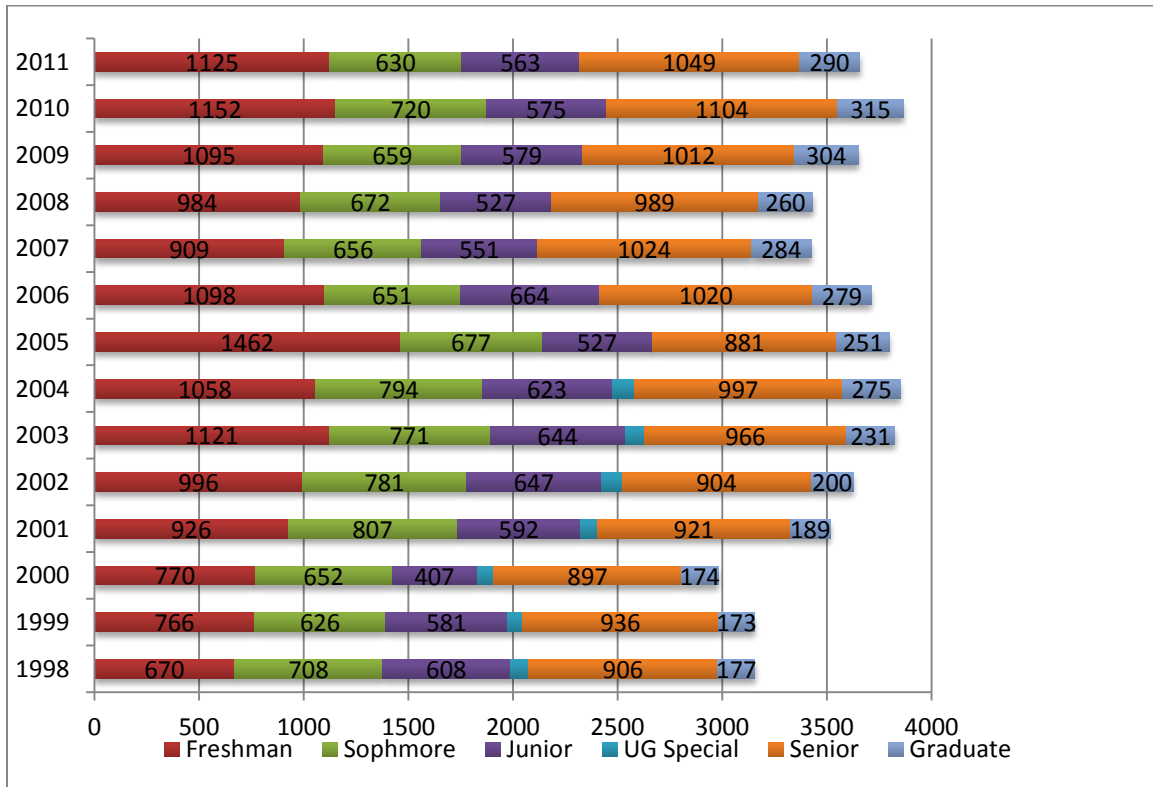
The calculations are based upon 15 credit hours for full-time undergraduate students and 12 credit hours for graduate students.

	2008 Fall Semester			2009 Fall Semester			2010 Fall Semester			2011 Fall Semester		
	2008 Fall Semester FT + FTE of PT	Total Scheduled Credit Hours	FTE of Total Credit Hours	2009 Fall Semester FT + FTE of PT	Total Scheduled Credit Hours	FTE of Total Credit Hours	2010 Fall Semester FT + FTE of PT	Total Scheduled Credit Hours	FTE of Total Credits	2011 Fall Semester FT + FTE of PT	Total Scheduled Credit Hours	FTE of Total Credits
Freshmen	695.61	10,206.50	680.43	749.37	11003.0	733.54	769.08	11350.00	756.67	722.77	10649.00	709.94
Sophomore	607.53	9,065.50	604.37	596.36	8881.50	592.10	668.23	9902.50	660.18	582.42	8674.00	578.28
Junior	460.40	6,910.50	460.70	508.10	7502.0	500.14	514.67	7688.50	512.56	513.21	7584.00	505.60
Senior	827.04	12,100.50	806.71	845.03	12294.5	819.64	912.20	13340.00	889.33	861.33	12501.50	833.44
Total Undergrad.	2590.58	38,283.00	2552.21	2698.86	39681.00	2645.42	2864.18	42281.00	2818.74	2679.73	39408.50	2627.26
Graduate												
Graduate	167.09	2,019.00	168.25	184.16	2237.0	186.40	183.91	2201.00	183.41	167.17	2008.00	167.34
Institutional Total FTE	2,757.67	40,302.00	2,720.46	2883.0	41918.0	2831.82	3048.09	44482.00	3002.15	2846.90	41416.50	2794.60

Source: Report NDUH2SRA- Headcounts and FTE Enrollments- Official Enrollment Report, received from Registrar's Office September 2011

Headcount Enrollment by Level 1998-2011

Headcounts include all students enrolled (FT and PT)



Source: NDUHSRA- Headcounts and FTE Enrollments Pg. 5 Institution Totals- Registrar's Office 4th Week Official Enrollment Reports. Undergraduate Special (UG Special) refers to an individual who has previously earned a bachelor's degree and is taking additional undergraduate coursework. PeopleSoft includes these students in Senior Status.

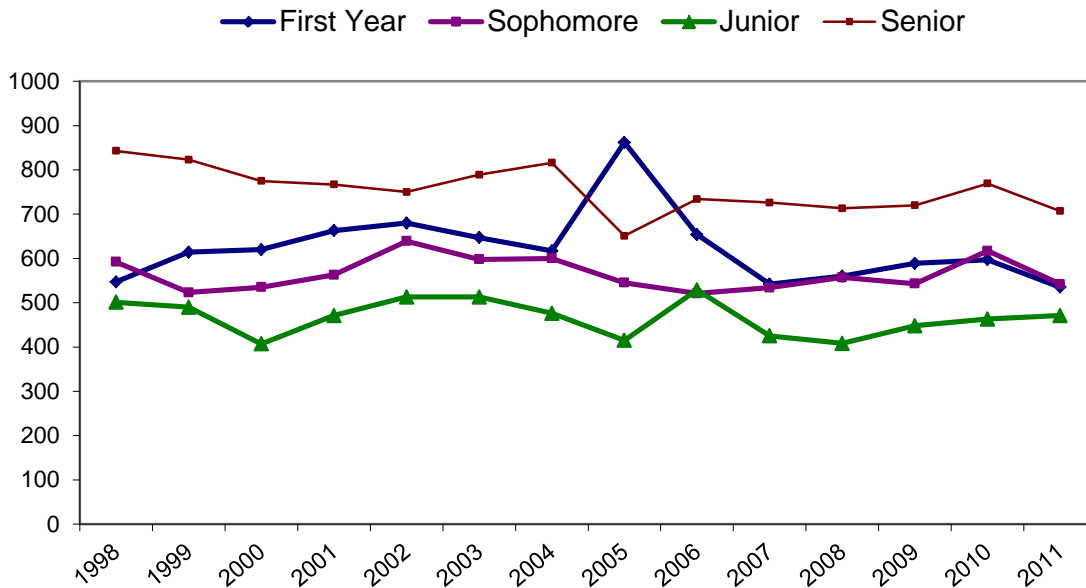
MSU Full-time Undergraduates by Status 1998-2011

	1998	1999	2000	2001	2002	2003	2004	2005	2006	2007	2008	2009	2010	2011
First Year	547	614	620	663	680	647	617	862	654	542	560	589	597	535
Male	236	249	263	261	287	271	251	339	283	238	210	248	223	224
Female	311	365	357	402	393	376	366	523	371	304	350	341	374	311
Sophomore	592	523	535	563	639	598	600	545	521	534	557	543	617	542
Male	233	217	211	256	243	215	249	223	195	202	235	212	250	194
Female	359	306	324	307	396	383	351	322	326	332	322	331	367	348
Junior	501	490	407	471	513	513	476	415	529	425	408	448	463	471
Male	200	180	149	159	188	193	161	154	206	144	138	173	173	181
Female	301	310	258	312	325	320	315	261	323	281	270	275	290	290
Senior	753	747	697	705	662	721	730	651	734	726	713	720	769	707
Male	269	303	253	245	217	255	255	211	244	239	254	252	261	240
Female	484	444	444	460	445	466	475	440	490	487	459	468	508	467
UG Special	45	38	39	31	44	34	43	0	0	0	0	0	0	0
Male	15	13	14	11	11	10	13	Status not included in PeopleSoft.						
Female	30	25	25	20	33	24	30							

Source: NDUHSRA- Headcounts and FTE Enrollments Pg. 5 Institution Totals- Registrar's Office 4th Week Official Enrollment Reports. Undergraduate Special (UG Special) refers to an individual who has previously earned a bachelor's degree and is taking additional undergraduate coursework. PeopleSoft includes these students in Senior Status.

Note: Undergrad special category was added to the senior category for this graphic for 1998 to 2004.

Total Full-Time Students



MSU Part-Time Undergraduates by Status 1998-2011

	1998	1999	2000	2001	2002	2003	2004	2005	2006	2007	2008	2009	2010	2011
First Year	123	152	150	263	316	474	441	600	442	367	424	506	555	590
Male	44	49	60	122	119	226	198	232	195	150	205	221	280	300
Female	79	103	90	141	197	248	243	368	247	217	219	285	275	290
Sophomores	116	103	117	181	142	173	194	132	130	122	115	116	103	88
Male	42	34	31	73	55	65	68	44	32	37	41	33	34	34
Female	74	69	86	108	87	108	126	88	98	85	74	83	69	54
Juniors	107	91	101	121	134	131	147	112	135	126	119	131	112	92
Male	34	22	26	37	36	46	47	39	46	37	37	43	43	37
Female	73	69	75	84	98	85	100	73	89	89	82	88	69	55
Senior	153	189	200	216	242	245	267	230	286	298	276	292	335	342
Male	68	63	66	73	78	73	95	86	100	106	112	94	104	119
Female	85	126	134	143	164	172	172	144	186	192	164	198	231	223
Undergrad. Special	42	35	41	49	53	58	61	See note.						
Male	14	9	14	18	19	17	17							
Female	28	26	27	31	34	41	44							

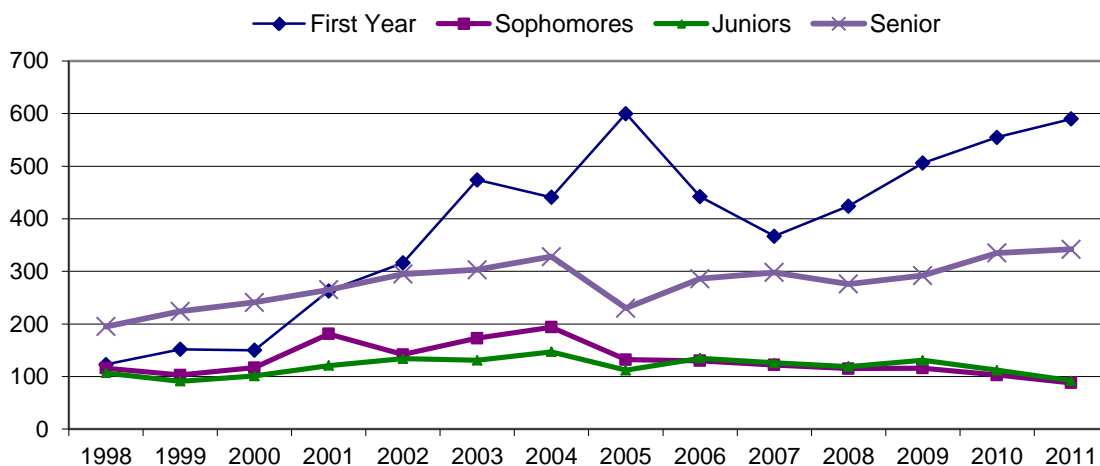
Source: NDUHSRA- Headcounts and FTE Enrollments Pg. 5 Institution Totals- Registrar's Office 4th Week Official Enrollment Reports.

Note: Undergraduate Special (UG Special) refers to an individual who has previously earned a bachelor's degree and is taking additional undergraduate coursework. ***Note:** PeopleSoft software initiated in 2005.

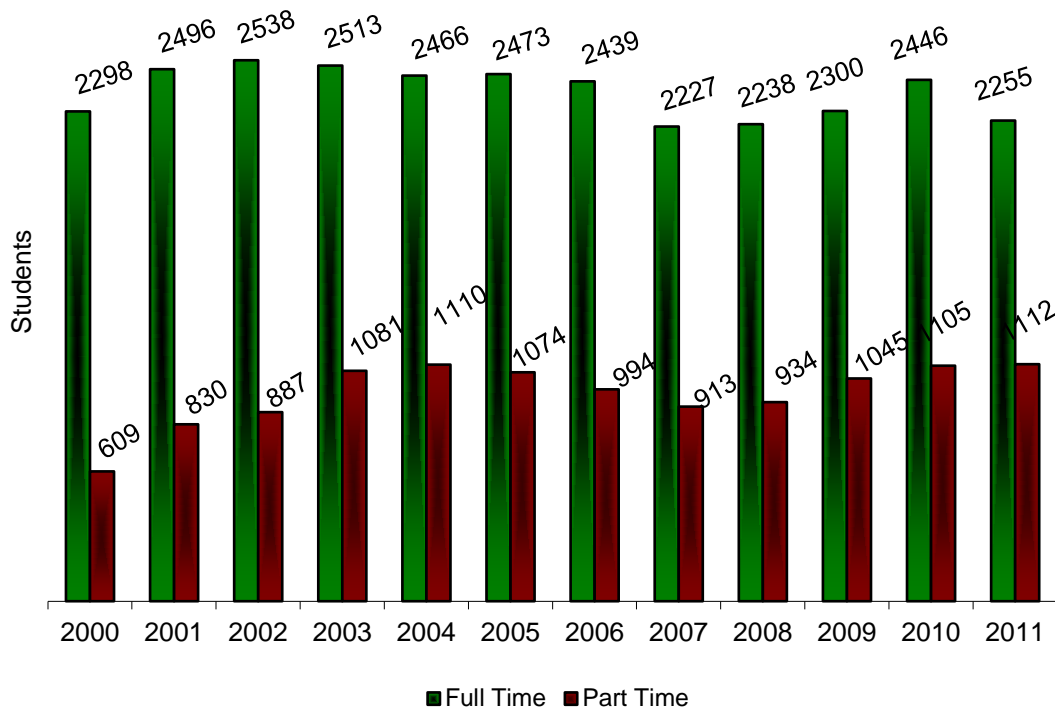
Undergraduate Special category no longer exists. These individuals are now included as seniors. To compare data for the seniors in 2005, the 2004 number used is the Senior + UG Special.

Note: Undergraduate Special numbers were added to senior status for this chart.

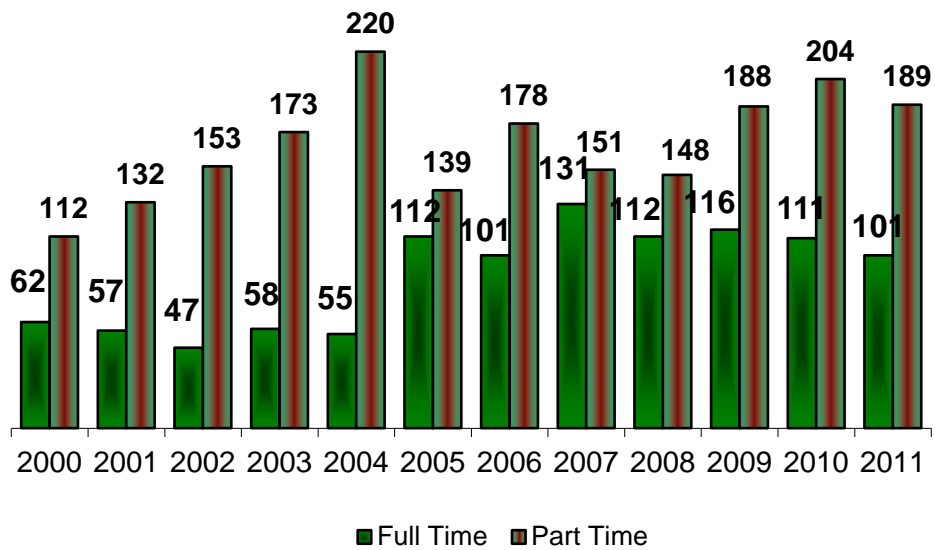
Total Part Time Students



*MSU Enrollment 2000 - 2011
Total Full-time/Part Time Status
Undergraduate Students*

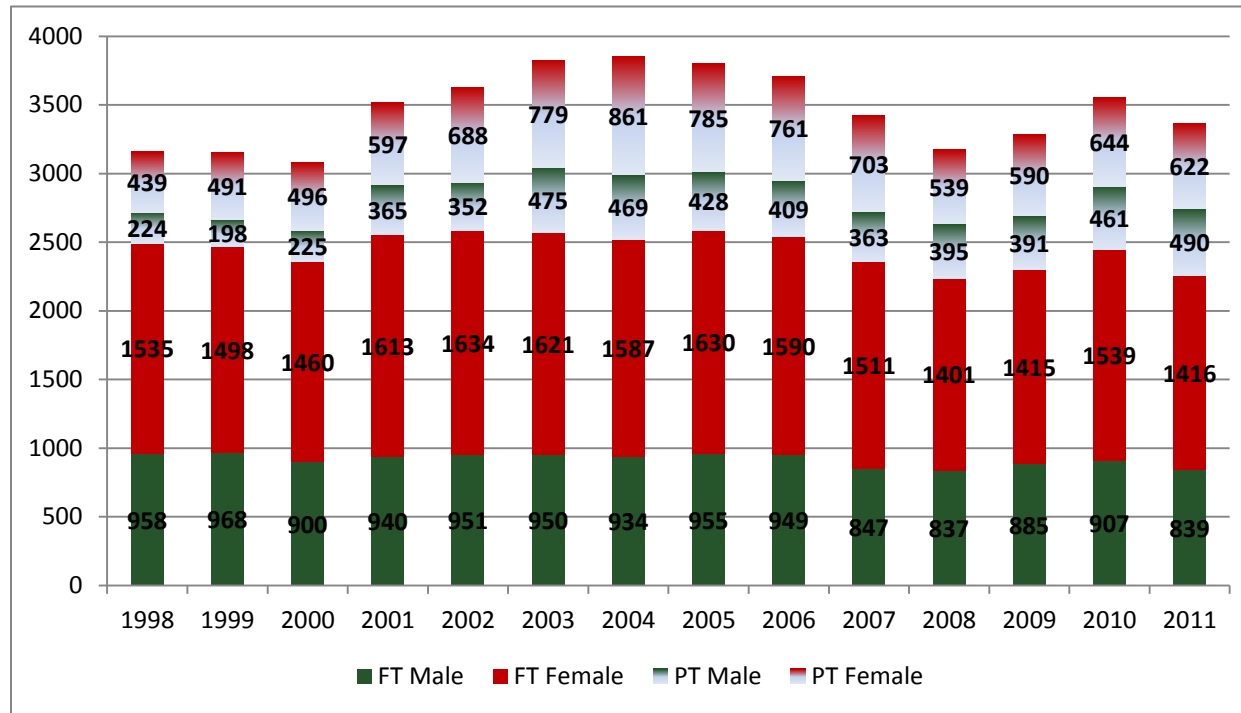


Graduate Students



Source: NDUHSRA- Headcounts and FTE Enrollments Pg. 5 Institution Totals- Registrar's Office 4th Week Official Enrollment Reports

*MSU Full-Time Enrollments by Gender and Enrollment Status
Combined Undergraduate and Graduate 1998-2011*

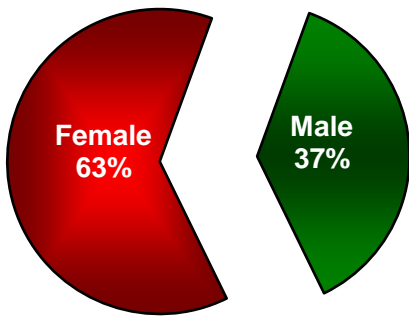


Source: NDUHSRA- Headcounts and FTE Enrollments Pg. 5 Institution Totals- Registrar's Office 4th Week Official Enrollment Reports

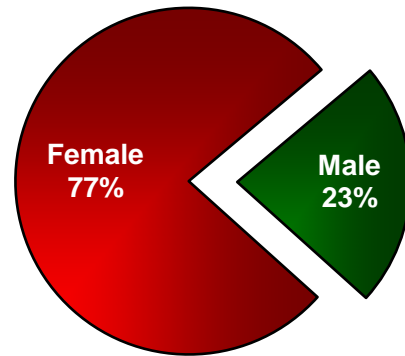
Enrollment by Gender Fall 2011

*Full-time - Enrolled in 12-24 Semester Hours
Part-time-Enrolled in 1-11 Semester Hours*

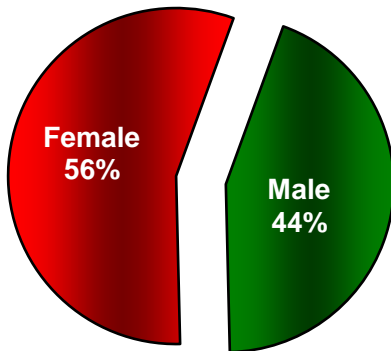
Full-Time Undergraduate Enrollment



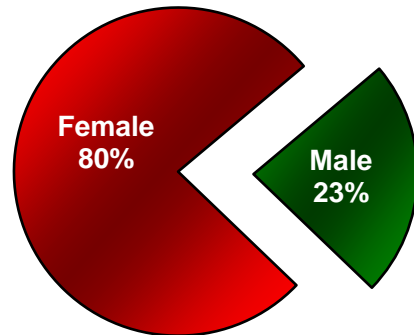
Full-Time Graduate Enrollment



Part-Time Undergraduates



Part-Time Graduates



Source: NDUHSRA- Headcounts and FTE Enrollments Pg. 5 Institution Totals- Registrar's Office 4th Week Official Enrollment Reports

MSU Student Totals by Ethnicity - 1998-2011
(Graduate and undergraduate combined)

	1998	1999	2000	2001	2002	2003	2004	2005	2006	2007	2008	2009	2010	2011	Fall 2011 % Chg
Caucasian	2595	2638	2578	2970	3065	3209	3202	3214	2974	2737	2511	2814	2937	2717	-7.4
Male	968	966	931	1096	1075	1144	1129	1153	1077	973	974	1032	1067	1020	-4.4
Female	1627	1672	1647	1874	1990	2065	2072	2061	1895	1764	1537	1782	1870	1697	-9.2
African American	63	60	58	101	99	116	114	83	93	90	106	109	141	128	-9.2
Male	39	36	34	56	52	73	66	50	58	50	63	53	85	82	-3.5
Female	24	24	24	45	47	43	48	33	35	40	43	56	56	46	-17.8
American Indian	140	148	150	148	153	137	117	122	142	127	129	147	142	98	-30.9
Male	54	65	61	46	54	54	42	39	36	34	37	50	46	34	-26.0
Female	86	83	89	102	99	83	75	83	106	93	92	97	96	64	-33.3
Asian/Pacific Islander	16	21	17	35	37	47	43	38	40	35	30	41	44	41	-6.8
Male	8	8	4	17	18	23	23	23	15	12	11	16	18	18	0
Female	8	13	13	18	19	20	24	15	25	23	19	25	26	23	-11.5
Hispanic	27	31	38	47	59	74	86	77	91	76	83	89	86	107	24.4
Male	14	15	18	20	30	37	43	38	41	26	36	40	36	40	11.1
Female	13	16	20	27	29	37	43	39	50	50	47	49	50	67	34.0
Non Resident Alien	309	257	240	214	212	225	245	259	299	290	275	337	389	415	6.6
Male	94	76	77	70	74	80	79	173	101	86	93	106	106	155	46.2
Female	215	181	163	144	138	145	166	86	198	204	182	231	249	260	4.4
Two or More Races	-	-	-	-	-	-	-	-	-	-	-	-	17	55	223.5
Male	-	-	-	-	-	-	-	-	-	-	-	-	9	20	122.2
Female	-	-	-	-	-	-	-	-	-	-	-	-	8	35	337.5
Not Reported	-	-	-	-	-	-	-	-	75	69	38	103	110	96	-12.7

NDU02SRK Compliance Report-Enrollment by Ethnicity Pg 40 Campus Totals – Registrar's Office 4th Week Official Enrollment Reports September 2011.
(<http://www.csgnetwork.com/percentchangepcalc.html>)

MSU Students by Residency 1998-2011

	1998	1999	2000	2001	2002	2003	2004	2005	2006	2007	2008	2009	2010	2011	% chg
Total North Dakota	2319	2383	2334	2544	2630	2661	2650	3165	2972*	2777	2779	2913	2970	2731	-8.0
Male	866	888	832	878	895	895	866	1126	1053	967	1020	1057	1089	1043	-4.2
Female	1453	1495	1502	1666	1735	1766	1784	2039	1917	1810	1759	1856	1881	1688	-10.2
Total ND Military	267	236	227	438	446	609	592								
Male	107	72	77	206	181	288	277								
Female	160	164	150	232	265	321	315								
Total Non-Resident	570	536	520	533	549	555	609	633	740	647	653	736	896	926	3.3
Male	209	206	216	221	227	243	260	257	305	243	266	283	346	353	2.0
Female	361	330	304	312	322	312	349	376	435	404	387	453	550	573	23
Canadian Residents	299	237	210	177	178	190	219	225	255	234	280	293	309	299	-3.2
British Columbia	3	4	2	3	5	7	8	7	14	5	4	5	12	9	-25
Alberta	20	14	9	10	9	14	15	3	12	12	23	27	33	32	-3.0
Saskatchewan	207	162	148	122	114	117	151	173	176	163	166	183	189	189	0
Manitoba	67	55	50	42	48	48	41	37	44	43	58	61	67	64	-4.4
Ontario	2	1	1	0	2	3	3	4	7	8	8	6	7	3	-57.1
New Brunswick	0	1	0	0	0	1	1	1	0	0	0	0	0	0	0
Quebec	0	0	0	0	0	0	0	0	2	3	2	3	2	2	0

Source: NDU02SRD Student Data Statistics- Enrollment Residency- 4th Week Official Enrollment Reports provided by Registrar's Office – September 2011.

Note: PeopleSoft does not separate ND and Military from ND residents. Total nonresident includes all enrollments minus ND and military.

* Includes two students who did not identify gender. The "Total Non-Resident" category contains all students that are not residents of ND, including: out-of-state and international (including Canadian). <http://www.csgnetwork.com/percentchangealc.html>

*MSU New Students, Transfers, and
Older than Average Students (OTAS)
1998-2011*

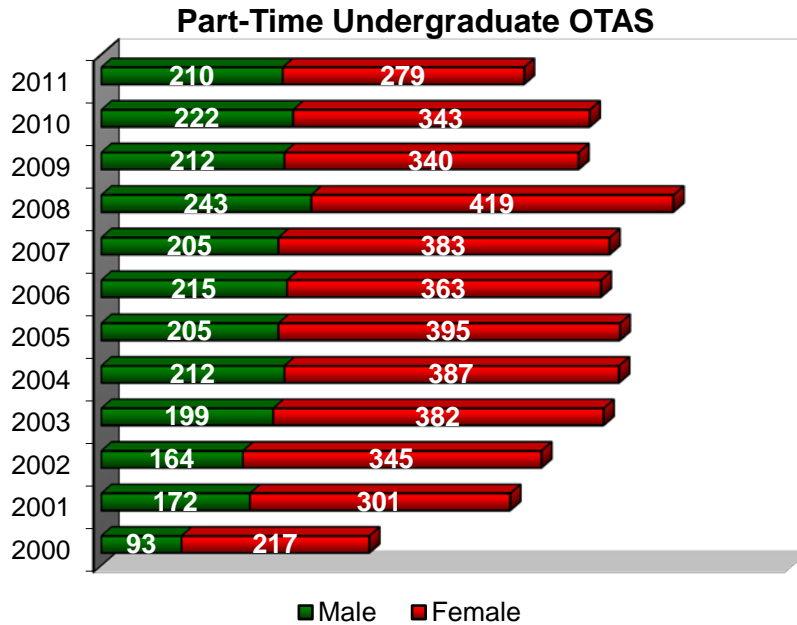
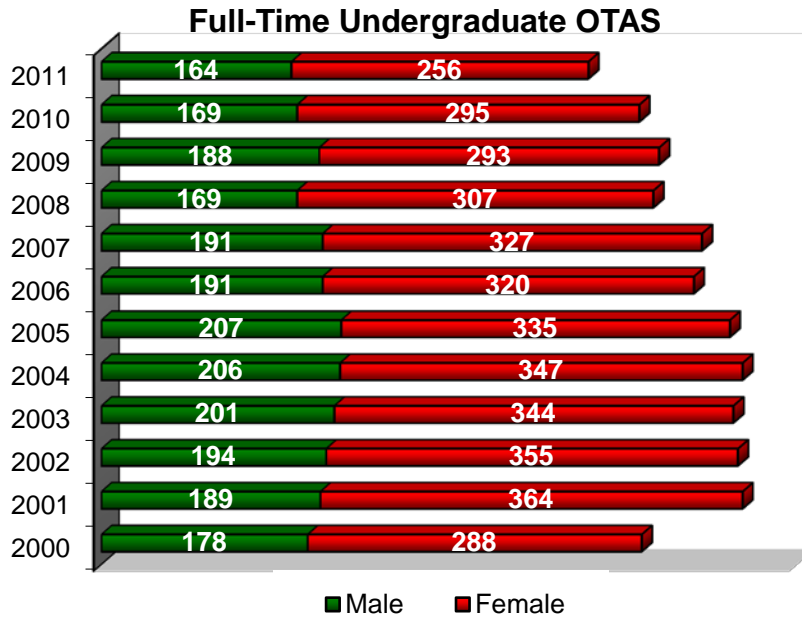
	1998	1999	2000	2001	2002	2003	2004	2005	2006	2007	2008	2009	2010	2011	% Change
Total New Freshman	418	525	511	506	552	543	549	471	483	445	437	438	483	437	-9.5
Male	164	210	219	203	231	211	215	206	205	197	158	189	171	188	-9.9
Female	254	315	292	303	321	332	334	265	278	248	279	249	312	249	-20.1
NDU02SRK- Enrollment; Campus Totals (p.37)- 1st Time Freshman-4th Week Official Enrollment Reports															
Total Transfers	347	336	328	419	429	449	456	382	279	278	270	328	341	251	-26.3
Male	144	145	138	170	172	203	188	138	100	85	91	114	129	83	-35.6
Female	203	191	190	249	257	246	268	244	179	193	179	214	212	168	-21.8
Source: Report NDU02SRD- Student Data Statistics- Enrollment-															
Total OTAS	863	818	776	1026	1058	1126	1152	1142	1089	1106	1138	1034	1029	909	-11.6
Male	326	294	271	361	358	400	418	412	406	396	412	401	391	374	-4.3
Female	537	524	505	665	700	726	734	730	683	710	726	633	638	535	-16.1
NDUH2SRN Enrollment Summary by Age & NDU02SRK															
New Grad Students									79	88	65	91	91	78	-14.2
Male									16	20	18	21	23	20	-13.0
Female									63	68	47	70	68	58	-14.7
NDU02SRD- Student Data Statistics- Enrollment: New Students-Beginning Grad (pg 2)															

Source: Report NDU02SRD- Student Data Statistics- Enrollment- and NDUH2SRN Enrollment Summary by Age and NDU02SRK- Enrollment 1st Time Graduate-4th Week Official Enrollment Reports provided by the Registrar's Office- September 23rd,2011.

Older Than Average Student (OTAS): undergraduate 25 years and older.

****Note:** Data in Fact Books 2001-2004 previously included only the data for full-time OTA undergraduate students. The numbers in this chart now include both full and part-time students for all years presented. Breakdowns of full and part-time students are presented graphically, by year, on the next page.

*MSU Older Than Average Student (OTAS)
Enrollment: 2000 - 2011*



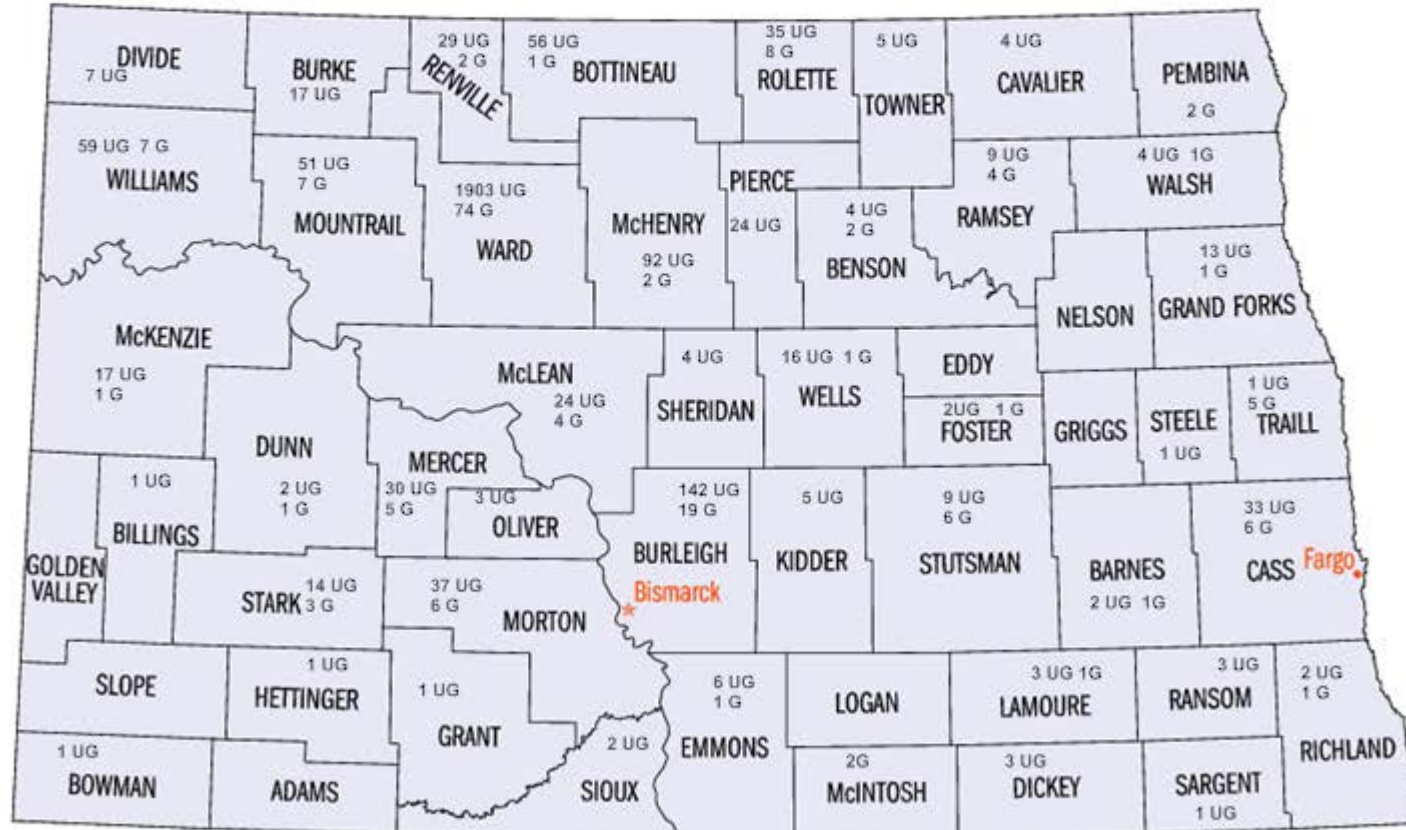
(OTA = student age 25 or greater)

Source: NDUH2SRN Enrollment Summary by Age- 4th Week Official Enrollment Report Provided by the Registrar's Office.

**Enrolled Undergraduate and Graduate Students
By North Dakota County: Fall 2011**

N=3,367 UG and N= 290 G

Data Source: 4th Week Official Enrollment Report; NDUH2 SRG



Freshman by North Dakota County: Fall 2011
N=929



*Minot State University
Freshman* by North Dakota County
1998 - 2011*

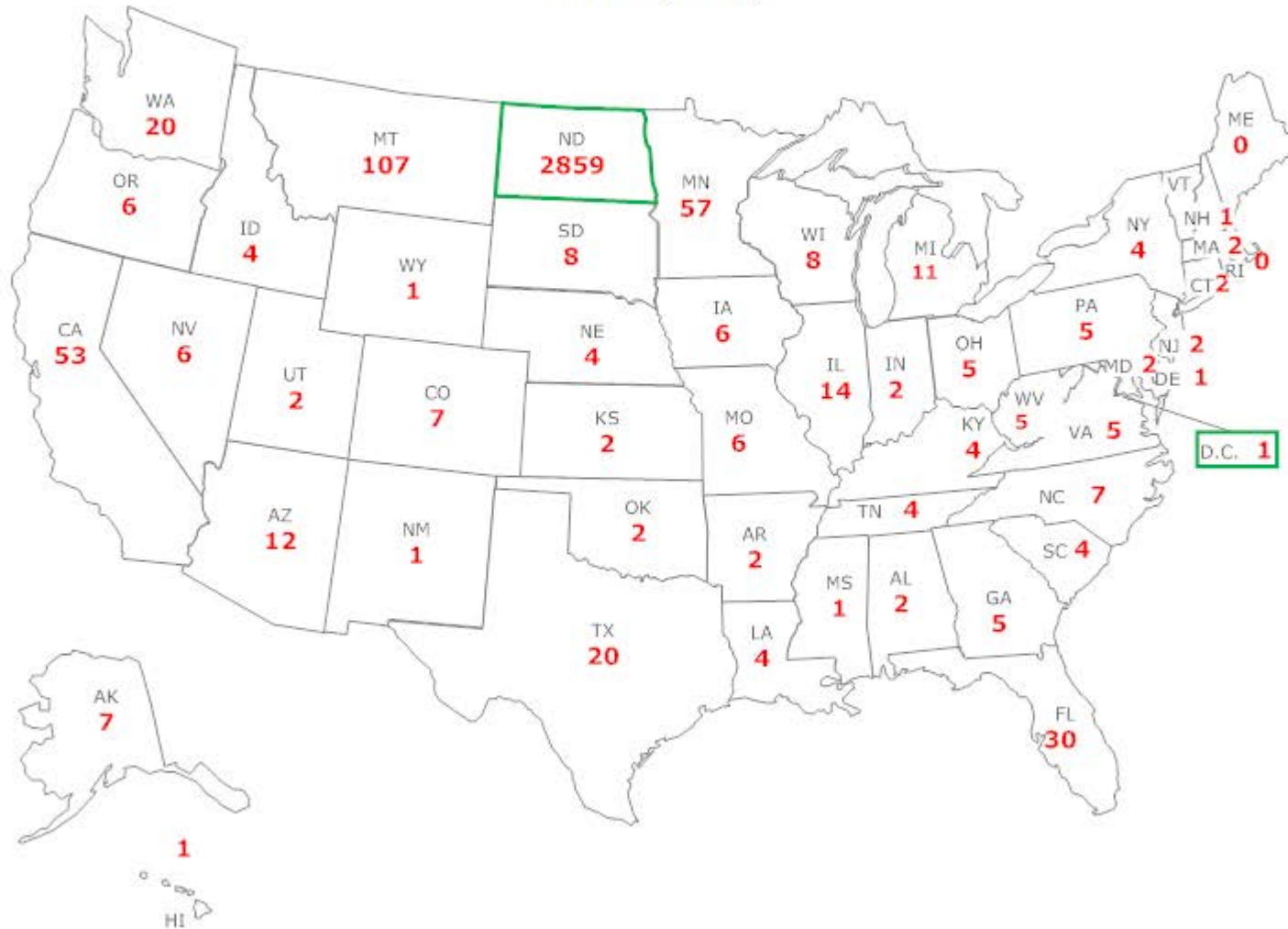
	1998	1999	2000	2001	2002	2003	2004	2005	2006	2007	2008	2009	2010	2011
Barnes								5	1	0	1	1	0	1
Benson	0	2	1	4	1	6	1	3	2	5	5	0	1	0
Billings	0	0	0	0	0	0	0	0	0	0	1	0	0	0
Bottineau	10	11	10	21	18	25	17	32	17	18	12	23	17	13
Bowman	0	0	0	0	0	0	0	0	0	0	1	0	0	0
Burke	7	5	2	6	8	4	8	14	8	11	2	7	2	8
Burleigh	11	9	12	12	14	17	27	71	25	26	24	18	22	18
Cass	0	1	1	4	6	1	2	7	1	2	6	7	6	8
Cavalier	2	3	7	6	4	6	5	2	2	3	0	0	2	1
Dickey	0	0	0	0	0	0	0	0	0	0	1	1	2	0
Divide	4	4	5	1	5	2	5	9	1	4	1	0	1	3
Dunn	0	0	3	2	4	5	3	6	2	3	0	2	1	0
Eddy	0	0	0	0	0	0	0	0	0	0	0	0	1	0
Emmons	0	0	0	0	0	0	0	0	0	0	0	1	0	1
Foster	0	0	0	0	0	0	0	0	0	0	0	1	0	1
Golden Valley	0	0	0	0	0	0	0	0	0	0	1	1	0	0
Grand Forks	4	1	3	3	5	6	4	9	4	3	5	9	6	4
Grant	0	0	0	0	0	0	0	0	0	0	1	0	1	0
Griggs	0	0	0	0	0	0	0	0	0	0	0	0	1	0
Hettinger	1	1	1	0	2	0	3	3	2	1	0	0	1	0
Kidder	0	0	0	0	0	0	0	0	0	0	0	1	5	0
LaMoure	0	0	0	0	0	0	0	0	0	0	2	0	0	1
McHenry	34	34	25	45	37	39	41	49	46	30	25	37	30	41
McIntosh	0	0	0	0	0	0	0	0	0	0	1	0	0	0
McKenzie	2	2	11	6	8	6	4	3	6	5	4	4	2	7
McLean	19	21	22	23	18	13	19	23	9	16	13	19	13	6
Mercer	7	13	18	8	10	11	10	11	7	7	9	10	7	9
Morton	4	0	5	0	7	9	9	19	16	7	6	2	7	7
Mountrail	11	9	11	23	20	17	14	32	21	25	20	17	10	15
Nelson	0	0	0	0	0	0	0	0	0	0	1	1	1	0
Oliver	0	0	0	0	0	0	0	0	0	0	0	1	0	0
Pembina	1	2	0	0	2	1	1	2	0	1	0	2	0	0
Pierce	11	12	14	9	5	14	10	7	13	10	10	6	6	7
Ramsey	2	4	3	3	8	7	4	12	4	2	4	5	4	0
Ransom	0	0	0	0	0	0	0	0	0	0	1	1	0	0
Renville	6	16	13	25	36	30	26	26	17	12	12	16	16	10
Richland	1	0	1	1	1	4	0	9	1	0	0	1	0	1
Rolette	11	19	10	15	11	13	12	25	16	11	10	10	8	7
Saint	0	0	0	0	0	0	0	0	0	0	0	1	0	0

Louis														
Sargent	0	0	0	0	0	0	0	0	0	0	0	0	1	0
Sheridan	1	2	1	1	0	1	4	2	1	0	0	2	2	1
Sioux	0	0	0	0	0	0	0	0	0	0	0	1	3	0
Stark	0	2	4	4	6	6	7	14	13	7	9	7	4	1
Steele	0	0	0	0	0	0	0	0	0	0	0	0	0	0
Stutsman	0	0	2	0	5	2	2	4	2	3	1	4	1	4
Towner	2	3	1	4	1	2	0	6	1	2	3	0	1	1
Trail	0	0	0	0	0	0	0	0	0	0	2	0	2	0
Walsh	0	3	0	4	3	2	3	2	1	0	0	2	0	0
Ward	394	446	424	506	566	653	582	746	596	540	620	674	753	736
Wells	7	11	4	6	4	5	7	3	4	11	4	8	8	4
Williams	16	18	13	23	18	21	28	49	19	16	15	21	11	11
Total ND											834	928	965	929

Data Source: NDUH2SRG- North Dakota Official Enrollment Reports provided by Registrar's Office.

* Freshman students are defined as any first-time students and any other student who has not yet obtained sufficient credits to advance to sophomore standing.

MSU Enrolled Students by State of Origin
Fall 2011 (n=3657)



State	2005	2006	2007	2008	2009	2010	2011
AK	6	5	6	2	4	5	7
AL	1	1	2	2	1	1	2
AR	1	2	2	1	2	2	2
AZ	9	8	6	9	10	15	12
CA	30	35	30	30	26	55	53
CO	11	13	11	9	12	12	7
CT	1	0	0	0	3	2	0
D.C.	0	0	0	0	0	0	1
DE	0	1	1	2	1	1	0
FL	9	19	15	11	16	31	30
GA	3	3	3	5	6	4	5
HI	2	1	1	1	0	2	1
IA	4	2	7	3	6	4	6
ID	18	9	10	7	6	4	4
IL	8	8	6	5	8	16	14
IN	1	0	4	2	3	2	2
KS	1	3	2	0	5	4	2
KY	2	2	6	6	6	2	4
LA	1	2	2	4	7	9	4
MA	2	5	1	1	1	4	2
MD	3	7	2	3	1	4	2
ME	0	0	0	0	1	2	0
MI	4	3	1	1	7	12	11
MN	36	34	28	36	49	50	57
MO	6	4	6	3	1	7	6
MS	1	2	0	0	1	1	1
MT	103	127	111	97	89	99	107
NC	3	3	2	3	4	4	7
ND	3,140	2,987	2,803	2825	2980	2970	2859
NE	3	2	0	3	1	6	4
NH	1	1	1	2	2	1	1
NJ	3	2	3	2	4	5	2
NM	3	2	1	0	2	3	1
NV	4	7	3	1	2	4	6
NY	8	7	2	3	1	3	4
OH	6	4	3	5	5	7	5
OK	0	1	0	4	4	8	2
OR	4	2	3	0	0	8	6
PA	2	5	1	4	2	6	5
RI	0	1	0	0	0	1	0
SC	1	2	0	1	0	1	4
SD	24	27	14	11	12	14	8
TN	0	0	1	0	1	4	4
TX	14	8	7	10	14	35	20
UT	3	2	4	2	5	6	2
VA	8	10	14	7	5	8	5
VT	0	0	0	1	0	0	0
WA	22	21	8	13	22	22	20

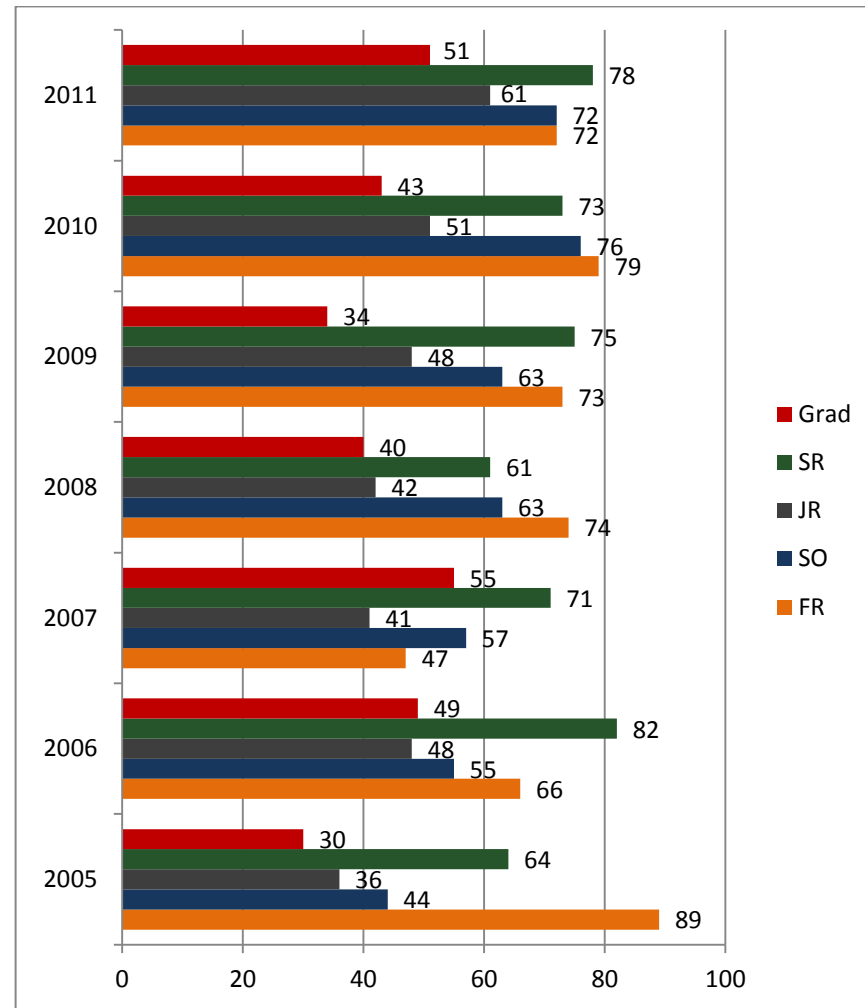
* Armed Forces (Europe and Pacific combined)
Data Source: NDUH2S RG- North Dakota Official



WI	5	5	4	2	1	12	8
WV	5	3	4	1	2	5	5
WY	8	9	5	3	5	10	1
P Rico	0	0	0	0	1	0	0
*AE	5	4	6	2	4	5	4

International Students: Fall 2011

Country	FR	SO.	JR	SR	Grad	Total
Argentina	1					1
Australia		2				2
Bahamas				1		1
Brazil				1		1
Canada	48	58	59	69	45	279
Cote D'Ivoire	4	1		1	2	8
Costa Rica					1	1
France	1					1
Germany		1				1
Ghana	1	1				2
Hong Kong				1		1
Indonesia			1			1
Israel	1					1
Japan	1	2				3
Korea	4	4	1	3		12
Nigeria	3	1		1	1	6
Norway		1				1
Poland				1		1
Sweden	4	1				5
Sweden	1					1
Turkmenistan	1					1
United Kingdom	2				1	3
US Minor Outlying Islands					1	1
Totals	72	72	61	78	51	334

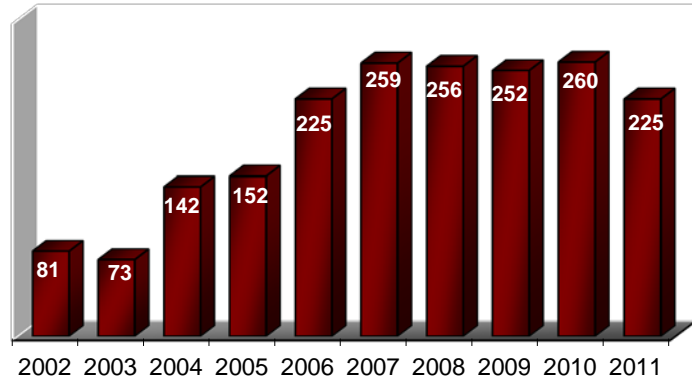


Center for Extended Learning
Details by Program

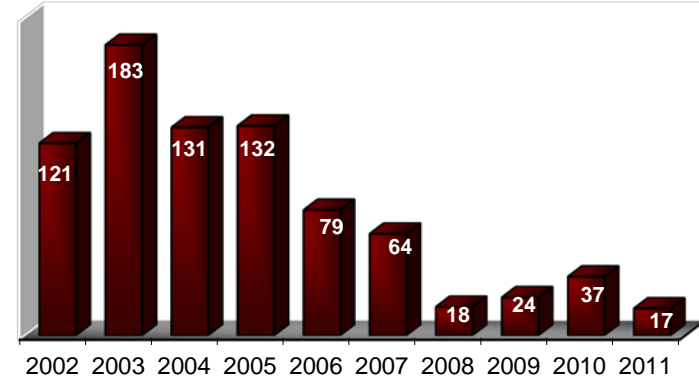


Fact Book 2011-2012

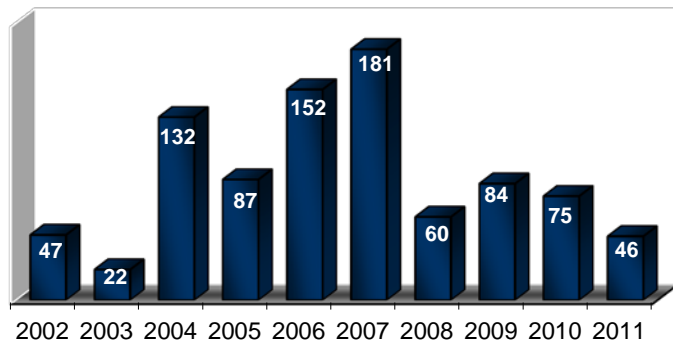
Bismarck



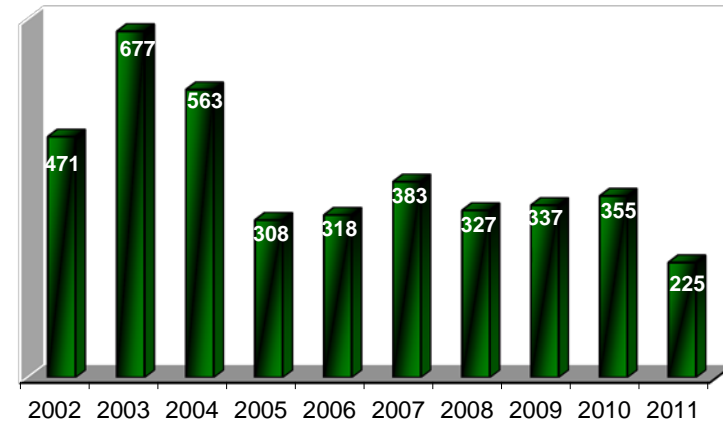
Correspondence



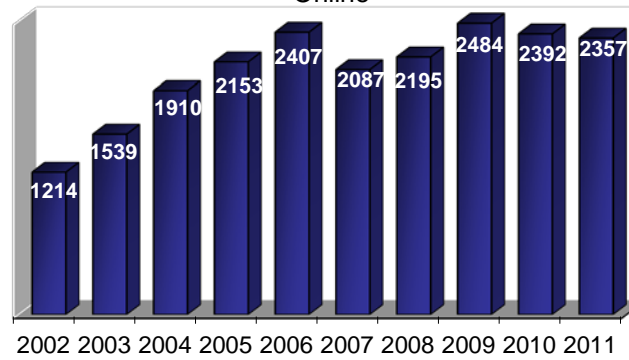
Interactive Video Network



MAFB



Online



Center for Extended Learning
Details by Program

New First-year Student Applications and Enrollment Patterns 2000-2011

	2000	2001	2002	2003	2004	2005	2006*	2007	2008	2009	2010	2011
Applied	764	757	743*	713	753	645	690	641	643	724	837	1163
Enrolled	511	506	552	543	527	471	448	436	437	438	483	462
Denied	26	25	37	45	39	19	16	24	23	38	55	4
% Enrolled	67.0	67.0	74.0	76.0	70.0	73.0	64.9	68	68%	60.5%	57.7%	39.7%

Data Source: Registrar's Office: IPEDS Fall Admissions Part B -4th Week Official Enrollment Numbers. In 2011 The DENY data was gathered from the Admissions Office New Applicant Weekly Progression spreadsheet.

**Data in the 2006 column is changed in the 2007 Fact Book. The data received from Admissions for 2006 had included students for fall and spring terms vs. fall semester only. The data now represents fall only data.*

Retention of First-year Students 1998-2010

(2011 data will be updated after official Spring 2012 #'s run)

Term	Full-time First Time Freshmen	Term	Still Enrolled	Retention Percentage
Fall 98	418	Fall 99	264	63%
Fall 99	525	Fall 00	301	57%
Fall 00	511	Fall 01	315	62%
Fall 01	506	Fall 02	321	63%
Fall 02	551	Fall 03	321	58%
New Calculation: 1998 – 2002 Calculation for Retention: <u>All</u> new freshmen who return the following year. *2004 Calculation for Retention: New freshmen enrolled Fall 2003 (12 semester hours or more) and returned for <u>any</u> number of credits in Fall 2004.				
Fall 03	396	Fall 04	248	*62.7%
Fall 04	393	Fall 05	274	70.0%
Fall 05	445	Fall 06	279	62.7%
Fall 06	483	Fall 07	292	60%
Fall 07	419	Fall 08	291	69%
Fall 08	406	Fall 09	284	70.0%
Fall 09	419	Fall 10	296	71%

Source: People+Soft NDU02SRK – NDU02SRL and IPEDS Spring Report Part E. Previous years indicated duplicated numbers and withdrawal students for 4th week.

New Transfer Application and Enrollment Patterns
 2000-2011

New Transfer	2000	2001	2002	2003	2004	2005	2006	2007	2008	2009	2010	2011
Applied	639	559	563	551	616	633	527	546	448	550	608	561
Enrolled	328	419	429	449	493	584	443	355	358	329	336	477
% Enrolled	51.3	75.0	76.0	81.5	80.0	92.3	84.1	65.0	79.9	59.8	55.3%	50.5%

Source: New Applicants Weekly Progression spreadsheet (Admissions)

*Comparison of ACT
National, State, and Minot State University
Averages by Year
Fall Semester*

Year	04/05	05/06	06/07	2007	2008	2009	2010	2011
Composite	20.9	20.9	21.1	21.2	21.1	21.1	21.0	21.1
English	20.4	20.4	20.6	20.7	20.6	20.6	20.5	20.6
Mathematics	20.7	20.7	20.8	21.0	21.0	21.0	21.0	21.1
Reading	21.3	21.3	21.4	21.5	21.4	21.4	21.3	21.3
Science	20.9	20.9	20.9	21.0	20.8	20.9	20.9	20.9

STATE								
Year	04/05	05/06	06/07	2007	2008	2009	2010	2011
Composite	21.2	21.3	21.4	21.6	21.6	21.5	21.5	20.7
English	20.2	20.4	20.5	20.8	20.7	20.7	20.7	19.8
Mathematics	21.3	21.2	21.4	21.5	21.6	21.5	21.4	20.8
Reading	21.5	21.4	21.6	21.9	21.8	21.8	21.7	20.8
Science	21.4	21.5	21.5	21.6	21.5	21.6	21.6	20.8

MINOT STATE UNIVERSITY								
Year	04/05	05/06	06/07	07/08	08/09	09/10	2010	2011
Composite	n/a	21.2	21.2	21.2	21.3	21.2	21.2	21.5
English	n/a	20.3	20.1	20.3	20.5	20.5	20.5	20.9
Mathematics	n/a	20.9	21.0	21.0	21.0	21.0	21.0	21.5
Reading	n/a	21.8	21.6	21.8	21.4	21.0	21.4	21.5
Science	n/a	21.5	21.6	21.4	21.3	21.0	21.4	21.5

Data Source: Keyholder IPEDS private file for Fall IPEDS entry. National and State Data found <http://www.act.org/news/data/states.html> Data for 04/05 is not retrievable due to the PeopleSoft transition

*Undergraduate
Cumulative Average GPA*

	01-02	02-03	03-04	04-05	05-06	06-07	07-08	Fall 09	Fall 10	Fall 2011
Freshman	2.28	2.31	2.36	2.51	2.62	**	2.47	2.64	2.42	2.96
Sophomore	2.72	2.65	2.73	2.76	2.55	**	2.83	2.8	2.83	2.94
Junior	2.9	2.91	2.87	2.94	2.52	**	2.99	3.09	2.99	3.08
Senior	3.04	3.04	3.08	3.07	2.8	**	3.13	3.02	3.1	3.12
UG Special	3.19	3.28	3.25	3.23	**	**	**	**	**	**
Average	2.91	2.93	2.96	2.99	2.62	2.95	3.01	2.89	2.83	3.03

** Undergraduate Specialist is no longer tracked in the software. These students are now included with students with senior status. Source: CO_FACTBOOK_GPA Based on previous fall end of term GPA'S.

*Graduate
Cumulative Average GPA*

01-02	02-03	03-04	04-05	05-06	06-07	07-08	Fall 09	Fall 10	Fall 11
3.7	3.72	3.71	3.75	3.15	3.82	3.73	3.63	3.47	3.8

Source: CO_FACTBOOK_GPA Based on previous fall end of term GPA'S.
Confirmed with the Graduate School

*MSU Student Housing Fall 2002 - 2011
By Residence Facility*

Residence	Cap	2002	2003	2004	2005	2006	2007	2008	2009	2010	2011	% Change
Women's												
Cook Hall	188	157	129	161	138	145	121	120	140	177	171	-3.3
Dakota Hall	96	65	72	72	73	47	28	41	37	56	57	1.78
Men's												
McCulloch Hall	145	119	117	97	94	103	90	85	108	127	137	7.8
Co-Ed												
C.P. Lura Manor	144	101	99	111	111	74	79	82	116	133	137	3.0
Apartment												
Pioneer Hall	40	39	30	35	33	39	40	34	40	39	40	2.5
Campus Heights	30	30	30	30	21	28	30	27	30	30	29	-3.3
Suite-Style Living												
Crane Hall	88	n/a	n/a	n/a	n/a	51	66	51	61	80	86	7.5
Beaver Lodge											35	0
Total	731	511	477	506	470	487	454	440	532	642	692	7.8

Data Source: Pat Hrichena and Lisa Eriksmoen~ Residence Life (Housing) Data Retrieved October 2011.

<http://www.csgnetwork.com/percentchangepcalc.html> Percentage Change Calculator

Cap. = capacity.

Updates made 1/23/12

Average Cost for Residence Hall Room per Semester

	2002	2003	2004	2005	2006	2007	2008	2009	2010	2011
Single	\$922.50	\$967.50	\$1,008.00	\$1037.50	\$1531.25	\$1680.00	\$1468.00	\$1468.00	\$1502.00	\$1547.00
Double	\$ 615.00	\$ 645.00	\$ 672.50	\$700.00	\$785.00	\$817.50	\$817.50	\$817.50	\$858.50	\$884.00

Data Source: Pat Hrichena and Lisa Eriksmoen~ Residence Life (Housing) Data Retrieved October 2011.

MSU Residence Hall Disciplinary Action Fall 2000 to Spring 2011

	Fall 00	Sp 01	Fall 01	Sp 02	Fall 02	Sp 03	Fall 03	Sp 04	Fall 04	Sp 05	Fall 05	Sp 06	Fall 06	Sp07	Fall 07	Sp08	Fall 08	Sp09	Fall 09	Fall 10	Sp 11	Fall 11
Visitation	34	29	52	28	67	15	45	23	41	39	56	22	46	22	50	18	37	8	49	69	20	72
Alcohol	29	10	45	37	24	24	60	10	39	24	11	20	55	11	45	23	16	18	29	28	48	55
Miscellaneous	21	26	52	41	64	69	79	43	70	58	34	10	66	42	91	26	54	32	57	97	59	114

Data Source: Pat Hrichena and Lisa Eriksmoen~ Residence Life (Housing) Data Retrieved October 2011.

Visitation: Opposite sex guest in building past guest hours. **Miscellaneous:** Fights, parties, smoking.

*Update made on 1/23/12

*Minot State University Crime Statistics**

Jan-Dec 2000 to Jan-Dec 2010

	Jan-Dec 2000	Jan-Dec 2001	Jan-Dec 2002	Jan-Dec 2003	Jan-Dec 2004	Jan-Dec 2005	Jan-Dec 2006	Jan-Dec 2007	Jan-Dec 2008	Jan-Dec 2009	Jan-Dec 2010
Crimes											
Murder	None	None	None	None	None	None	None	None	None	None	None
Forcible Sex Offenses	None	None	None	1	None	None	None	None	None	None	2
Robbery	None	None	None	None	None	None	None	None	None	None	None
Aggravated Assault	None	None	None	None	None	None	None	3	None	None	1
Burglary	None	None	1	2	2	6	20	9	3	6	6
Motor Vehicle Theft	None	3	3	2	None	2	None	None	1	None	None
Arrests											
Liquor Law Violation	43	69	73	76	63	36	86	31	33	36	43
Drug Abuse	4	4	None	5	6	2	None	2	5	6	6
Weapons	1	1	1	1	1	2	None	None	None	5	7

Source: Campus Safety and Security Bulletin 2009- Facilities Management Data Source: Assistant Vice President for Facilities Management (2000-2005), Student Affairs (2006 data).

*Arrests or reported crimes on campus, on property of university-affiliate organizations or affecting university-sanctioned events. Data is computed on the calendar year not the academic or fiscal year.

Degrees Conferred College of Arts and Sciences

CIP Code	Program	1999	2000	2001	2002	2003	2004	2005	2006	2007	2008	2009	2010	2011
	Art (BA)	5	3	6	5	9	2	7	3	4	6	2	8	N/A
50.0701	Art (BFA)	N/A	N/A	N/A	N/A	N/A	N/A	0	0	0	0	0	0	8
50.1002	Arts Administration (BS)	N/A	N/A	N/A	N/A	0	0	0	0	0	0	0	0	0
13.1302	Art Education (BSE)	3	0	0	0	1	2	1	1	3	1	3	2	5
	Bioinformatics and Computational Biology (BS)	N/A	N/A	N/A	N/A	N/A	N/A	N/A	N/A	N/A	N/A	N/A	N/A	0
26.0101	Biology (BA)	6	7	9	8	7	10	7	13	12	8	10	1	11
13.1322	Biology Education (BSE)	2	0	2	3	2	3	2	3	0	1	2	4	2
9.0701	Broadcasting (BA)	8	9	6	3	4	14	7	9	3	4	12	9	10
40.0501	Chemistry (BA)	2	0	0	0	1	1	3	1	4	7	7	3	4
13.1323	Chemistry Education (BSE)	0	1	0	0	0	2	0	0	0	0	0	0	0
51.1005	Clinical Laboratory Science (BS)	3	4	0	5	3	0	0	1	1	2	2	2	2
	Communication Arts (BA)	3	5	2	1	2	Inactive	N/A	N/A	N/A	N/A	N/A	N/A	N/A
9.0101	Communication (BA)	N/A	N/A	N/A	N/A	N/A	0	0	2	1	1	1	3	1
13.1399	Communication Arts (BSE)	0	1	1	2	0	0	0	1	1	0	0	0	0
11.0101	Computer Science (BS)	17	12	10	20	11	9	10	15	7	7	6	9	5
43.0104	Criminal Justice (BS)	55	61	55	53	43	47	41	53	47	48	43	40	33
	Earth Science (BA)	2	0	0	0	0	0	0	0	0	0	0	0	N/A
13.1316	Earth Science Education (BSE)	0	0	1	0	2	0	0	1	1	0	0	0	0
	Economics (BA)	4	4	4	4	2	5	0	1	2	1	0	0	N/A
23.0101	English (BA)	9	6	2	3	4	8	4	4	7	5	8	1	3
13.1305	English Education (BSE)	7	6	7	2	4	3	3	6	6	3	5	2	8
16.0101	Foreign Language IA (BA)	2	3	0	0	0	0	0	0	0	0	0	0	0
16.0101	Foreign Language/Arabic (BA)	N/A	N/A	N/A	N/A	N/A	N/A	N/A	N/A	N/A	N/A	N/A	N/A	0
16.0501	Foreign Language/German (BA)	0	0	0	1	2	0	3	0	0	0	4	0	1
	Foreign Language/French (BA)	0	0	1	0	1	0	0	1	Inactive March 21, 2006				
16.0905	Foreign Language/Spanish (BA)	0	0	0	0	0	1	1	0	1	2	1	0	2
13.1326	Foreign Language/German (BSE)	0	0	0	1	1	0	0	1	0	0	0	0	0
	Foreign Language/French (BSE)	0	0	0	0	0	0	0	0	0	0	1	1	N/A
13.1330	Foreign Language/Spanish (BSE)	0	1	0	2	0	0	2	0	0	1	0	0	1
24.0102	General Studies (BGS)	8	13	19	13	16	28	15	25	27		20	24	22
40.0601	Geology (BA)	0	1	2	0	1	1	2	0	0	28	2	5	6
54.0101	History (BA)	5	6	3	5	5	4	4	5	3	4	6	7	11
13.1328	History Education (BSE)	2	7	4	5	1	6	2	1	4	11	7	6	1
27.0101	Mathematics (BA)	5	2	2	3	5	4	4	1	2	5	2	5	1
13.1311	Mathematics Education (BSE)	5	5	2	3	2	5	2	5	6	6	6	10	7
10.9999	Multimedia Studies (BS)			0	0	1	2	0	0	0	0	1	1	1
50.0901	Music (BA)	1	0	5	6	2	5	4	3	0	3	0	2	5
13.1312	Music Education (BSE)	6	7	8	7	7	5	3	7	6	2	4	5	2
40.0101	Physical Science (BA)	0	0	0	0	0	0	2	0	0	0	0	0	0
13.1316	Physical Science Ed. (BSE)	1	0	1	1	3	0	0	0	0	0	0	0	0
40.0801	Physics (BA)	1	0	0	1	1	1	1	0	0	1	0	1	0
13.1329	Physics Education (BSE)	0	1	1	0	0	0	0	1	0	0	9	1	0
51.0907	Radiologic Technology (BS)	9	15	5	5	4	8	12	14	7	6	11	5	10
45.0101	Social Science (BA)	4	1	1	2	4	2	2	0	1	1	1	0	1
13.1317	Social Science Education (BSE)	4	5	3	6	2	9	1	0	4	0	1	3	1
45.1101	Sociology (BA)	4	10	3	6	3	8	5	7	6	9	8	10	2
3.0103	Studies in Community & Environ (BA)													0
50.0501	Theatre Arts (BA)						0	0	1	2	1	3	1	4
	Total Graduates by College	183	196	165	176	156	195	150	186	168	174	188	171	170

Updated: 7/17/12

Data Sources: Graduation data for first majors is from the annual publication "North Dakota University System: Programs Offered/Completed at North Dakota Institutions of Postsecondary Education." This report provides information on degree and certificate programs offered and student program completions for the fiscal year in North Dakota's public and private postsecondary educational institutions.

*Art (BFA) new in 2004; Arts Administration (BS) new in 2002; Communication (BA) new in 2004; Foreign Languages split in 1999; Multimedia Studies (BS) new in 1999

*Degrees Conferred –Second Major
College of Arts and Sciences*

CIP	College of Arts & Sciences	2005	2006	2007	2008	2009	2010	2011
50.0701	Art	2	0	0	0	0	0	0
13.1302	Art Education	0	0	0	0	1	0	0
26.0101	Biology	0	0	0	1	1	0	0
9.0701	Broadcasting	0	0	0	1	1	1	0
40.0501	Chemistry	1	0	0	1	0	0	2
51.1005	Clinical Lab Sciences	0	1	0	0	0	0	0
9.0101	Communication Studies	0	0	1	1	0	0	0
11.0101	Computer Science	0	0	1	1	1	0	0
43.0104	Criminal Justice	0	0	0	1	0	3	0
16.0501	German	1	1	0	0	1	0	0
54.0101	History	0	2	0	1	0	0	0
13.1328	History Education	0	2	2	2	0	1	0
11.0401	Information Science	0	0	1	1	0	0	0
13.1311	Mathematics Education	1	0	0	0	0	0	0
27.0101	Mathematics	3	1	2	2	3	1	0
51.0907	Medical Radiological Tech	1	0	0	0	0	0	0
10.9999	Multimedia Studies	0	0	0	0	0	0	0
50.0901	Music	0	3	1	1	0	1	0
13.1312	Music Teacher Educator	0	0	1	0	0	0	0
40.0801	Physics	0	0	0	1	0	0	0
13.1316	Science Education	0	1	0	0	0	0	0
13.1317	Social Science Education	0	0	0	1	1	0	0
45.1101	Sociology	2	3	5	1	5	3	1
16.0905	Spanish	0	1	1	1	0	0	1
13.133	Spanish Language Education	0	0	0	1	0	0	0
50.0501	Theater Arts	0	0	0	0	1	0	1
	Total	11	15	15	18	15	10	5
Source: IPEDS Survey ~ Registrar's Data http://surveys.nces.ed.gov/ipeds/								

Data Sources: Graduation data for first majors is from the annual publication "North Dakota University System: Programs Offered/Completed at North Dakota Institutions of Postsecondary Education." This report provides information on degree and certificate programs offered and student program completions for the fiscal year in North Dakota's public and private postsecondary educational institutions.

Degrees Conferred College of Business

CIP Code	Program	1999	200	2001	2002	2003	2004	2005	2006	2007	2008	2009	2010	2011
52.0301	Accounting (BS)	19	24	29	19	12	23	25	29	13	18	24	14	24
52.1299	Applied Business Info. Tech. (BAS)*	N/A	N/A	N/A	N/A	N/A	3	5	6	8	9	5	9	7
52.0299	Applied Management (BAS)*	N/A	N/A	N/A	N/A	N/A	1	0	2	2	10	4	7	3
13.1303	Business Education (BSE)	8	4	9	13	9	4	4	4	1	3	3	1	2
52.0899	Energy Economics & Finance* (BS)	N/A	N/A	N/A	N/A	N/A	N/A	N/A	N/A	N/A	N/A	New '09	0	0
52.0801	Finance (BS)	23	30	23	12	21	23	20	15	10	19	23	14	10
	General Business (BAS)	0	0	0	0	3	0	0	0	0	0	0	0	0
52.1101	International Business (BS)	1	3	3	4	3	7	2	0	1	6	21	25	3
52.0201	Management (BS)	58	59	46	49	42	36	41	39	48	25	72	50	51
52.1201	Management Information Systems (BS)	14	25	19	14	22	23	21	18	13	12	12	10	13
52.1401	Marketing (BS)	19	18	22	16	14	12	19	9	4	21	29	26	9
11.0401	Virtual Business (BS)*	N/A	N/A	N/A	N/A	N/A	0	0	0	0	0	0	0	0
	Total Graduates by College	142	163	151	127	126	132	137	122	100	123	193	156	122
	*Applied Bus. Info Tech/ Management (BAS) new in 2003													
	*Virtual Business (BS) new in 2004-05													
	*Energy Economics & Finance approved March 2009													

Updated: 7/17/12

Data Sources: Graduation data for first majors is from the annual publication "North Dakota University System: Programs Offered/Completed at North Dakota Institutions of Postsecondary Education." This report provides information on degree and certificate programs offered and student program completions for the fiscal year in North Dakota's public and private postsecondary educational institutions.

*Degrees Conferred –Second Major
College of Business*

CIP	College of Business	2005	2006	2007	2008	2009	2010	2011
52.0301	Accounting	0	1	1		0	1	1
52.1299	Applied Business Information Technology	0	0	0	1	0	12	0
13.1303	Business Education	0	0	0	1	0	0	1
52.0899	Energy Economics and Finance	0	0	0	0	0	0	1
52.0801	Finance	7	1	3	3	3	14	2
52.1101	International Business	0	0	0	4	19	2	31
52.0201	Management	4	5	1	4	0	0	13
52.1201	Management Information Systems	0	0	0	1	1	0	1
52.1401	Marketing	8	9	20	14	22	13	22
	Total	19	16	25	28	45	42	72

Source: IPEDS Survey ~ Registrar's Data <http://surveys.nces.ed.gov/ipeds/>

Updated: 7/17/2012

Data Sources: Graduation data for first majors is from the annual publication "North Dakota University System: Programs Offered/Completed at North Dakota Institutions of Postsecondary Education." This report provides information on degree and certificate programs offered and student program completions for the fiscal year in North Dakota's public and private postsecondary educational institutions.

Degrees Conferred
College of Education and Health Sciences

CIP Code	Program	98/99	99/00	00/01	01/02	02/03	03/04	04/05	05/06	06/07	07/08	08/09	09/10	10/11
51.1501	Addiction Studies (BS)	14	7	2	1	4	3	6	7	5	1	4	5	6
51.0913	Athletic Training (New Program 12/18/08)	N/A	N/A	N/A	N/A	N/A	N/A	N/A	N/A	N/A	N/A	N/A	N/A	0
51.0201	Communication Disorders (BS)	22	23	22	18	7	16	16	20	25	30	17	26	26
	Communication Disorders Education (BSE)			1	0	9	0	0	0	0	0	0	0	N/A
31.0504	Corporate Fitness (BS)	11	20	11	8	7	12	2	9	12	10	11	9	10
	Developmental Disabilities (AS)	0	6	2	2	1	1	1	2	3	1	N/A	N/A	N/A
	Human Services: Intellectual and Developmental Disabilities (AS, BS)*	0	3	1	0	0	1	4	3	3	2	9	3	1
13.1099	Education of the Deaf (BSE)	8	5	7	3	4	0	3	2	1	N/A	N/A	N/A	N/A
	Intellectual and Development Disabilities and Autism (BSE)**	15	13	11	3	8	8	5	8	3	7	10	11	13
13.1202	Elementary Education (BSE)	93	63	75	55	72	47	61	48	36	56	48	42	44
51.3801	Nursing (BSN)	32	32	33	31	51	33	46	46	48	34	42	33	43
13.1314	Physical Education (BSE)	8	15	11	7	11	13	3	5	18	12	9	20	12
42.0101	Psychology (BA)	26	22	17	30	29	10	19	12	13	20	17	18	13
13.1317	Psychology Education (BSE)			1	1	0	0	0	0	2	4	1	0	0
44.0701	Social Work (BSW)	39	24	26	18	21	17	11	11	14	21	24	17	27
	Total Graduates by College	268	233	220	177	224	161	177	173	183	198	192	184	195
	* Name changed from Developmental Disabilities (AS, BS) to HS: IDD in 2011													
	**formerly Education of Mentally Retarded and Education of the Deaf; changed to IDDA in 2011													

Data Sources: Graduation data for first majors is from the annual publication “North Dakota University System: Programs Offered/Completed at North Dakota Institutions of Postsecondary Education.” This report provides information on degree and certificate programs offered and student program completions for the fiscal year in North Dakota's public and private postsecondary educational institutions.

*Degrees Conferred –Second Major
College of Education and Health Sciences*

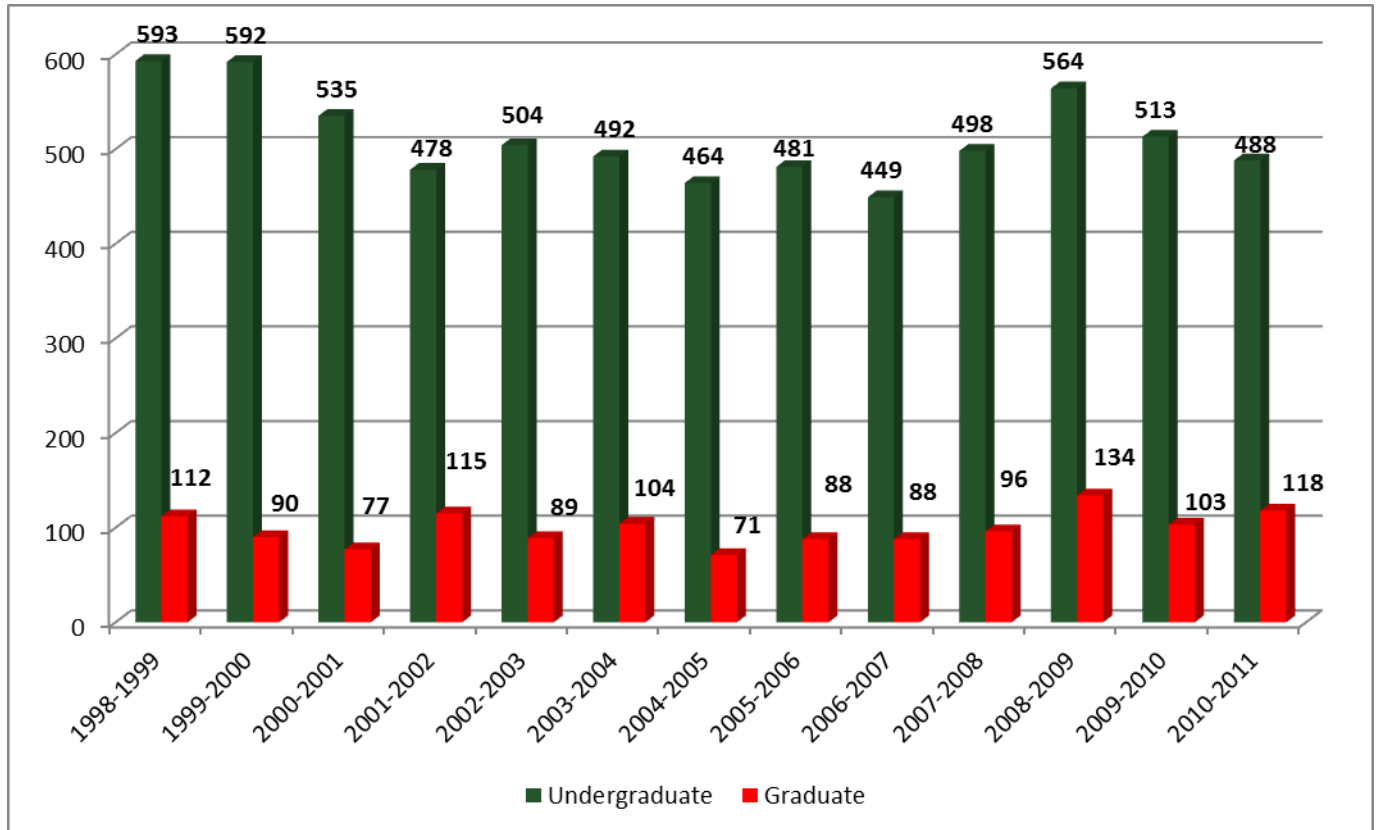
CIP	College of Education and Health Sciences	2005	2006	2007	2008	2009	2010	2011
31.0504	Corporate Fitness	0	1	8	3	1	2	2
13-	Education	1	1	0	0	0	0	0
13.1006	Education of MR/IDDA*	0	0	0	0	0	0	1
13.1202	Elementary Education	2	10	7	6	8	11	12
13.1314	Physical Education	0	1	0	0	0	0	1
42.0101	Psychology	2	3	4	6	1	1	3
51.1501	Substance Abuse	1	0	0	0	0	0	1
	Total	6	16	19	15	10	14	20

Source: IPEDS Survey ~ Registrar's Data <http://surveys.nces.ed.gov/ipeds/>

NOTE: * IDDA=Intellectual and Developmental Disabilities and Autism, name change effective spring 2011.

Data Sources: Graduation data for first majors is from the annual publication "North Dakota University System: Programs Offered/Completed at North Dakota Institutions of Postsecondary Education." This report provides information on degree and certificate programs offered and student program completions for the fiscal year in North Dakota's public and private postsecondary educational institutions.

Minot State University Degrees Conferred



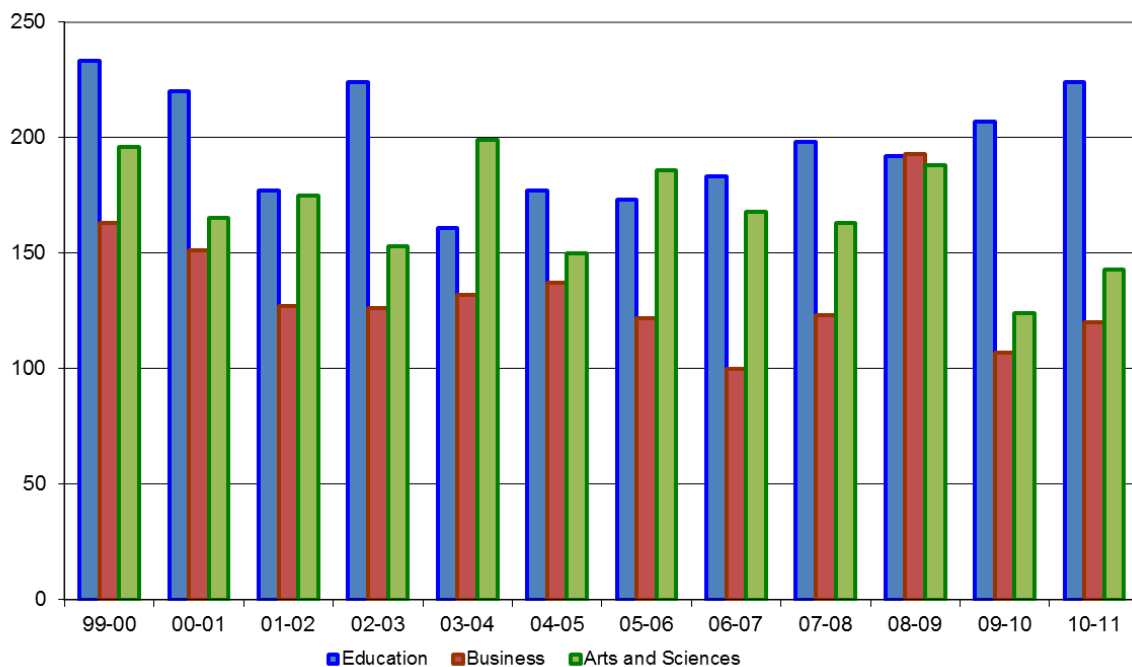
Data Source: Completions Data for NDUS Provided by Registrar's Office

Graduation data for first majors is from the annual publication "North Dakota University System: Programs Offered/Completed at North Dakota Institutions of Postsecondary Education."

Undergraduate Degrees Conferred

Undergraduate Degrees	2004	2005	2006	2007	2008	2009	2010	2011
Associate of Arts (AA)	1	1	2	3	1	0	1	0
Associate of Science (AS)								1
Bachelor of Arts (BA)	79	75	63	61	80	76	60	90
Bachelor of Applied Science (BAS)	4	5	8	8	20	11	14	10
Bachelor of Fine Arts (BFA)								2
Bachelor of General Studies (BGS)	28	15	25	27	28	20	24	22
Bachelor of Science (BS)	222	219	229	196	233	198	184	274
Bachelor of Science Education (BSE)	108	92	97	92	107	91	92	118
Bachelor of Science Nursing (BSN)	33	46	46	48	35	37	33	43
Bachelor of Social Work (BSW)	17	11	11	14	21	24	17	27
Total	492	464	481	449	525	457	425	587

Graduates by College by First Degree



Data Source: Registrar's Office Degree Completions by Degree Type Query NDU_0077_SR-DR Graduates by Program/plan All Terms Summer, Fall and Spring combined and pivoted by count of degree

Undergraduate Certificates Awarded 2001-2011

CIP	Certificate Programs	2002	2003	2004	2005	2006	2007	2008	2009	2010	2011
52.0407	Application Software Specialist	2	1	9	9	6	2	3	8	7	9
52.1299	Applied Business Information Technology									12	0
11.0201	Computer Science Basic Programming	0	1	0	2	2	0	1	0	1	2
13.1099	Human Services: Intellectual and Developmental Disabilities									0	0
43.0199	Police Management & Investigations	0	0	0	0	0	0	0	1	0	0
11.0801	Web Development	1	1	1	2	1	0	5	8	7	9
	Totals	3	3	10	13	9	2	9	17	27	20

Data Source: Completions Data for NDUS Provided by Registrar's Office

Undergraduate Graduation Retention Rates

2004-2011

Graduation Rates	03/04	04/05	05/06	06/07	07/08	08/09	09/10	10/11
Percentage rate of students who graduate within 6 years or less from original cohort	30	29	27	31	30	31	34	
Data Source: IPEDS Graduation Rates and Common Data Set								

Note: Official numbers are not available until March

Graduate Degrees Conferred

Program	1998	1999	2000	2001	2002	2003	2004	2005	2006	2007	2008	2009	2010	2011
Communication Disorders (MS)	36	38	29	33	30	25	19	18	25	14	31	23	25	19
Criminal Justice (MS)	1	4	0	2	0	1	4	3	2	3	2	4	2	3
Education (MED) New 2001-02	N/A	N/A	N/A	N/A	N/A	4	6	10	11	11	10	20	13	22
Elementary Education (MS)	14	35	18	4	30	0	6	N/A	N/A	N/A	N/A	N/A	N/A	N/A
English Education* (MAT)	New	0	0	3	7	0	1	0	1	0	0	1	0	0
Information Systems (MS) New 2003-04	N/A	N/A	N/A	N/A	N/A	N/A	N/A	N/A	N/A	6	8	10	11	20
Management (MS)	5	6	5	15	22	47	41	22	18	28	17	46	23	26
Mathematics Education (MAT)	9	9	5	3	7	2	8	4	5	2	6	7	5	5
Music Education (MME)	0	3	5	0	0	0	3	0	1	4	1	0	2	0
School Psychology (EDSPEC)	6	2	8	4	8	5	5	2	8	6	1	3	4	5
Science Education (MAT)	3	0	2	1	0	1	1	0	1	1	0	1	0	0
Special Education (MS)	21	15	18	12	11	4	10	12	16	13	20	19	22	18
Totals	95	112	90	77	115	89	104	71	88	88	96	134	107	118
* English Education-New 1997-1 cohort authorized														

Graduate Certificates Awarded

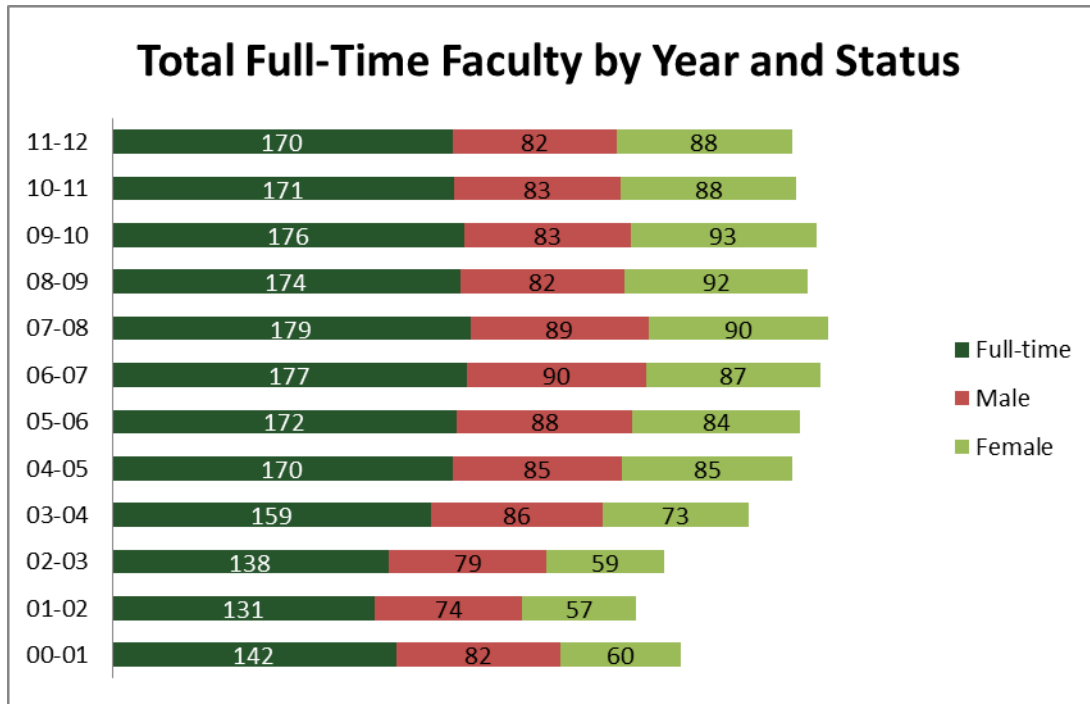
Certificate	2001	2002	2003	2004	2005	2006	2007	2008	2009	2010	2011
Knowledge Management*	New 2001	0	0	0	0	0	0	0	0	0	28
*Title change in 2006 from Technology for Managers											

Data Sources: Graduation data for first majors is from the annual publication "North Dakota University System: Programs Offered/Completed at North Dakota Institutions of Postsecondary Education." This report provides information on degree and certificate programs offered and student program completions for the fiscal year in North Dakota's public and private postsecondary educational institutions.

Total Full-Time Faculty Status and Gender Distributions

	98-99	99-00	00-01	01-02	02-03	03-04	04-05	05-06*	06-07	07-08	08-09	09-10	10-11	11-12
Full-time	170	146	142	131	138	159	170	172	177	179	174	176	171	170
Male	97	86	82	74	79	86	85	88	90	89	82	83	83	82
Female	73	60	60	57	59	73	85	84	87	90	92	93	88	88

Data Source: IPEDS-Part D Human Resources Data not available until winter collection mid-January.



Average Faculty Salaries by Rank

Year	Professor	Associate Professor	Assistant Professor	Instructor	All Listed Ranks	Change
2000-01	\$56,964	\$45,414	\$39,777	\$34,698	\$43,784	1.40%
2001-02	\$57,072	\$46,162	\$40,460	\$36,713	\$44,975	2.70%
2002-03	\$57,576	\$47,860	\$41,837	\$37,635	\$46,046	2.30%
2003-04	\$58,190	\$48,077	\$42,238	\$37,231	\$46,479	0.93%
2004-05	\$61,576	\$48,727	\$43,423	\$39,608	\$48,334	4.00%
2005-06	\$63,351	\$51,518	\$44,503	\$37,786	\$49,254	0.20%
2006-07	\$64,871	\$51,888	\$45,812	\$34,368	\$47,756	-0.03
2007-08	\$65,615	\$54,956	\$48,298	\$36,994	\$50,310	5.35%
2008-09	\$68,133	\$57,199	\$50,974	\$36,141	\$53,112	5.57%
2009-10	\$75,235	\$57,487	\$53,803	\$39,459	\$55,381	4.27%
2010-11	\$77,996	\$60,755	\$55,424	\$41,797	\$58,502	5.63%
2011-12	\$77,600	\$62,559	\$56,044	\$42,705	\$59,727	2.09%

Data Source: IPEDS Part E 9/10 Month Contract- Totals were averaged for the purposes of this table

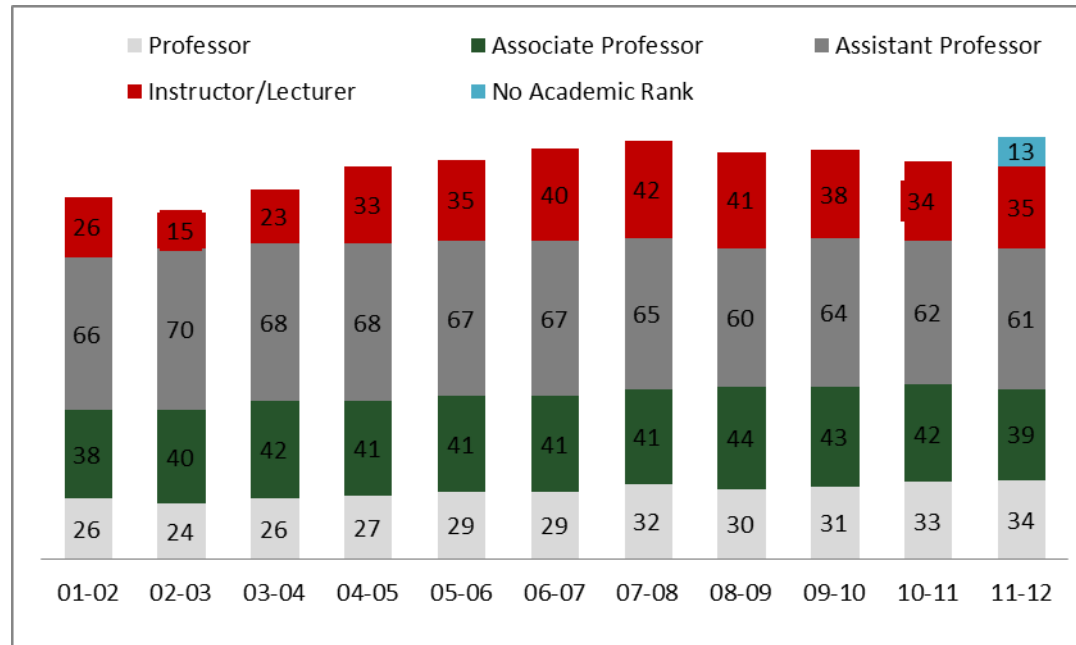
Full-time Faculty Rank and Gender Distribution

	01-02	02-03	03-04	04-05	05-06	06-07	07-08	08-09	09-10	10-11	11-12
Professor	26	24	26	27	29	29	32	30	31	33	34
Male	21	19	20	20	23	24	26	24	25	27	28
Female	5	5	6	7	6	5	6	6	6	6	6
Associate Professor	38	40	42	41	41	41	41	44	43	42	39
Male	23	23	26	28	26	26	26	26	23	21	18
Female	15	17	16	13	15	15	15	18	20	21	21
Assistant Professor	66	70	68	68	67	67	65	60	64	62	61
Male	31	36	33	32	30	31	24	19	22	25	27
Female	35	34	35	36	37	36	41	41	42	37	34
Instructor/Lecturer	26	15	23	33	35	40	42	41	38	34	35
Male	11	4	7	9	10	9	13	13	13	10	10
Female	15	11	16	24	25	31	29	28	25	24	25
No Academic Rank											13
Male	n/a	n/a	n/a	n/a	n/a	n/a	n/a	n/a	n/a	n/a	1
Female	n/a	n/a	n/a	n/a	n/a	n/a	n/a	n/a	n/a	n/a	12
Total	156	149	159	169	172	177	180	180	176	171	182

Data Source: IPEDS-Part G-Human Resources. (Add all sec. Tenured, non-tenured, on-track). Data is not available until winter collection mid-January.

Continued--

Faculty by Rank



Data Source: IPEDS-Part G-Human Resources Data not available until winter collection mid-January.

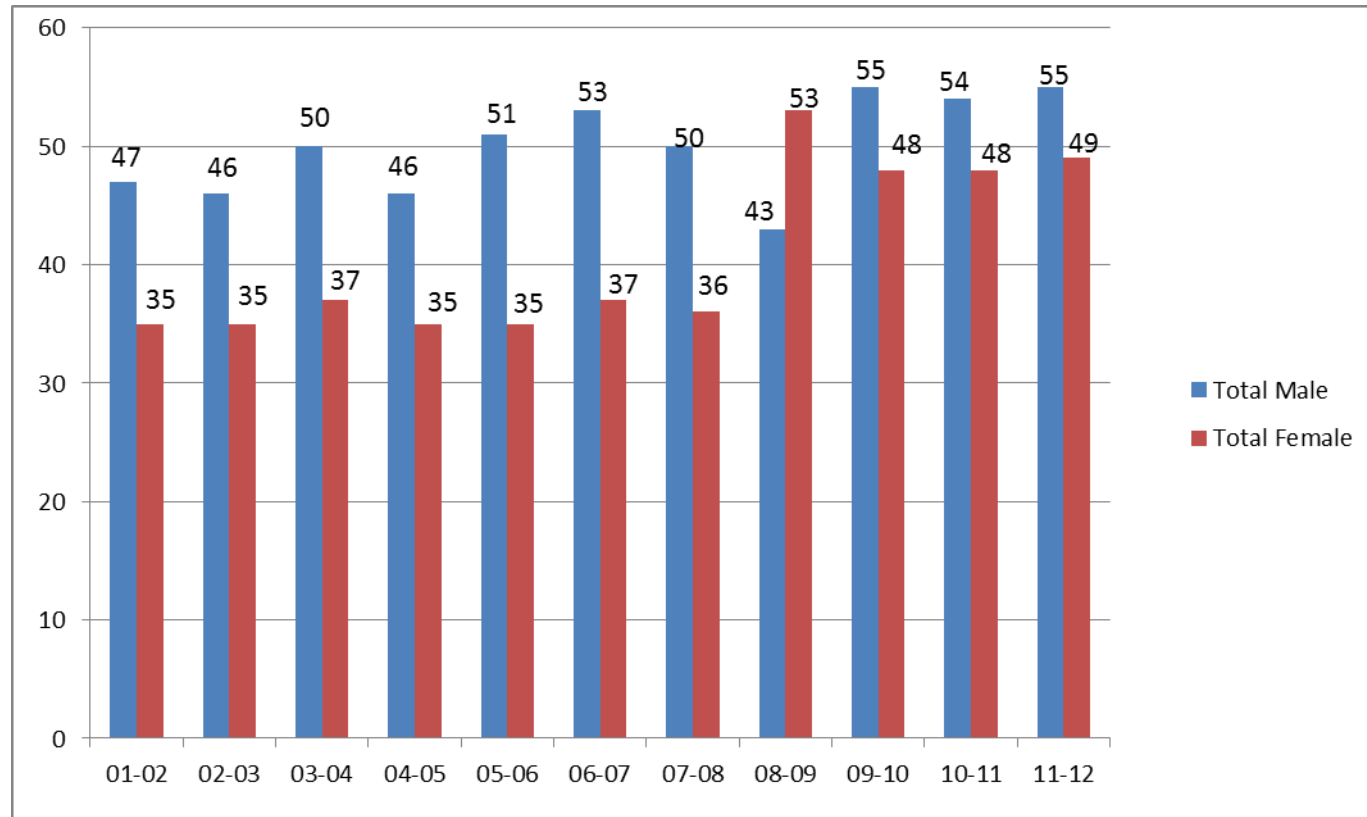
Tenured Faculty: Rank and Gender

	00-01	01-02	02-03	03-04	04-05	05-06	06-07	07-08	08-09	09-10	10-11	11-12
Professor	22	21	20	25	23	28	28	29	28	30	32	34
Male	18	17	16	19	18	22	23	23	22	24	26	28
Female	4	4	4	6	5	6	5	6	6	6	6	6
Associate Professor	33	33	34	35	33	35	36	31	38	39	38	39
Male	19	20	20	22	20	24	23	20	23	22	19	18
Female	14	13	14	13	13	11	13	11	15	17	19	21
Assistant Professor	30	28	27	27	25	23	26	26	30	34	32	31
Male	9	10	10	9	8	5	7	7	8	9	9	9
Female	21	18	17	18	17	18	19	19	22	25	23	22
Total	85	82	81	87	81	86	90	86	96	103	102	104
Total Male	46	47	46	50	46	51	53	50	53	55	54	55
Total Female	39	35	35	37	35	35	37	36	43	48	48	49

Data Source: IPEDS-Human Resources Data not available until winter collection mid-January. IPEDS Part G- Just Tenured Section

Continued--

Total Tenured Faculty by Year and Gender



Staff by Job Family and Gender Fall 2011

Job Family	Female	Male	Total
0000 Executive/Administrative	11	15	26
1000 Administrative/Managerial			
3000 Other Professional	63	36	99
4000 Technical and Paraprofessional	25	5	30
5000 Clerical and Secretarial	45	0	45
6000 Skilled Crafts	1	10	11
7000 Services/Maintenance	10	24	34
Total	155	90	245

Data Source: IPEDS-Part I-Human Resources. Data not available until winter collection mid-January. FT FTE are only included. Use IPEDS part H to verify.

Tuition and Fees Comparison

Tuition and Required Fees for Resident Undergraduate
A Regional Comparison ¹

Year	Variance to Regional Average	
	Dollars	Percent
2001-2002	(\$479)	-15.70%
2002-2003	(\$500)	-14.90%
2003-2004	(\$516)	-13.80%
2004-2005	(\$395)	-9.60%
2005-2006	(\$276)	-6.30%
2006-2007	(\$112)	-2.40%
2007-2008	(\$140)	-2.90%
2008-2009	(\$141)	-2.70%
2009-2010	(\$31)	-0.60%
2010-2011	(\$46)	-0.80%
2011-2012	Not available	Not Available

¹ Regional averages include: CO, IA, KS, MN, MO, MT, NE, OK, SD, WI, and WY.

Data Source: *NDUS Student Affordability Report published in March.*

Tuition and Fees Compared to Household Income

Resident Undergraduate Tuition and Required Fees
As a percent of Median Household Income ^{1, 2}

Year	Regional	ND
2001-2002	7.40%	7.20%
2002-2003	8.00%	7.90%
2003-2004	8.90%	9.00%
2004-2005	9.50%	9.20%
2005-2006	10.00%	10.40%
2006-2007	10.30%	10.60%
2007-2008	10.40%	11.60%
2008-2009	12.30%	10.90%
2009-2010	11.80%	10.90%
2010-2011	11.30%	11.70%
2011-2012	11.20%	12.40%

¹Tuition and Required Fees/median household income.

² Regional averages includes: CO, IA, KS, MN, MO, MT, NE, OK, SD, WI, and WY.

Data Source: *NDUS Student Affordability Report.* And NDUS Accountability Board Level Report

Operating and Contributed Income Ratio

FY 2011

Unrestricted & Restricted Revenues

Revenues

Tuition and Fees	\$	14,659,215
Federal grants and contracts		7,107,570
State grants and contracts		997,826
Nongovernmental Grants and Contracts		66,715
Sales and services – Ed. Depts.		1,000,283
Auxiliary enterprise		3,321,354
Other operating revenue		66,130
Total	\$	27,219,093

Total Revenue & State Approp	\$	45,066,600
Operating and Contributed Income Ratio		60%

Data Source: Assistant Vice President, Business Office Controller

	FY 2004	FY 2005	FY 2006	FY 2007	FY 2008	FY 2009	FY2010
Tuition and Fees	\$8,625,793	\$10,349,602	\$11,552,372	\$12,822,623	\$13,357,109	\$13,760,441	\$14,010,695
Federal grants & contracts	\$7,828,760	\$8,437,742	\$7,275,993	\$8,542,804	\$8,007,051	\$5,522,708	\$6,924,802
State grants and contracts	\$437,636	\$584,798	\$726,121	\$1,243,051	\$929,208	\$851,984	\$1,612,607
Nongovernmental Gifts and Contracts	-\$420,778	\$218,771	\$29,767	\$93,231	\$75,468	\$54,980	\$53,271
Sales and services – Ed. Depts.	\$2,034,927	\$1,162,785	\$867,379	\$1,052,816	\$1,007,316	\$954,182	\$998,866
Auxiliary enterprise	\$3,912,993	\$3,922,964	\$3,797,750	\$4,091,866	\$2,305,196	\$2,535,009	\$3,147,506
Other operating revenue	\$144,268	\$9,205	\$49,779	\$44,619	\$58,777	\$56,826	\$61,967
Total	\$22,563,599	\$24,685,867	\$24,299,161	\$27,891,010	\$25,740,125	\$23,736,130	\$26,809,714
Total Revenue & State**	\$35,877,045	\$37,464,349	\$37,884,810	\$41,871,399	\$40,787,686	\$40,787,686	\$43,897,346
Operating & Contributed Income Ratio***	63%	66%	64%	67%	63%	58%	61%

Data Source: Assistant Vice President, Business Office Controller

**Sum of Total and State Appropriations

*** Total /Total Revenue and State

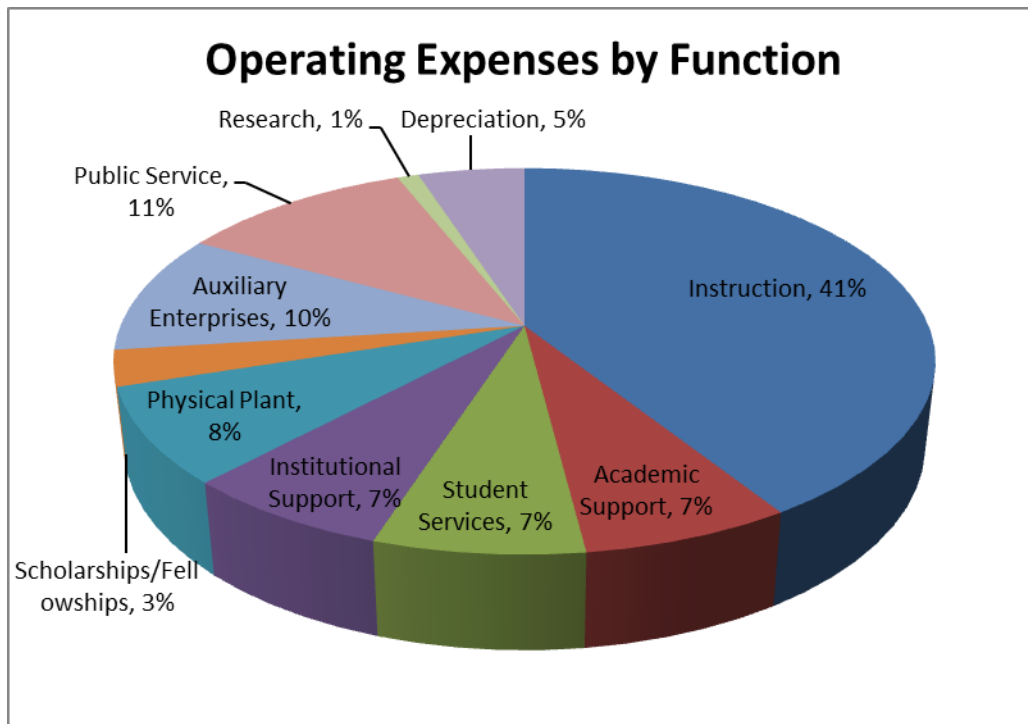
Grants and Contracts

Fiscal Year	Private	State	Federal	Total
2003-04	(\$420,778)	\$437,636	\$7,828,760	\$7,845,618
2004-05	\$218,771	\$584,798	\$8,437,742	\$9,241,311
2005-06	\$29,767	\$726,121	\$7,275,993	\$8,031,881
2006-07	\$93,231	\$1,243,051	\$8,542,804	\$9,879,086
2007-08	\$75,468	\$929,208	\$8,007,051	\$9,011,727
2008-09	\$54,980	\$851,984	\$5,522,708	\$6,429,672
2009-10	\$53,271	\$1,612,607	\$6,924,802	\$8,590,680
2010-11	\$66,715	\$997,826	\$7,107,570	\$8,172,111

Data Source: Assistant Vice President, Business Services Controller

Operating Expenses by Function

Function	07-08	08-09	09-10	10-11	10-11 %
Instruction	\$18,082,126.00	\$18,738,723.00	\$20,613,786.00	\$21,027,504.00	41%
Academic Support	\$1,846,333.00	\$1,876,360.00	\$2,127,631.00	\$3,434,729.00	7%
Student Services	\$2,702,711.00	\$2,527,681.00	\$3,294,765.00	\$3,724,608.00	7%
Institutional Support	\$4,146,523.00	\$4,840,991.00	\$5,014,988.00	\$3,635,353.00	7%
Physical Plant	\$3,546,176.00	\$3,853,407.00	\$3,830,646.00	\$4,135,483.00	8%
Scholarships/Fellowships	\$200,287.00	\$229,639.00	\$1,240,092.00	\$1,506,654.00	3%
Auxiliary Enterprises	\$3,267,190.00	\$3,523,716.00	\$4,187,821.00	\$4,879,341.00	10%
Public Service	\$3,691,782.00	\$4,376,658.00	\$5,615,677.00	\$5,864,084.00	11%
Research	\$1,276,580.00	\$574,474.00	\$584,003.00	\$433,683.00	1%
Depreciation	\$2,356,434.00	\$2,345,516.00	\$2,365,152.00	\$2,626,872.00	5%
Total	\$41,116,142.00	\$42,887,165.00	\$48,874,561.00	\$51,268,311.00	100%

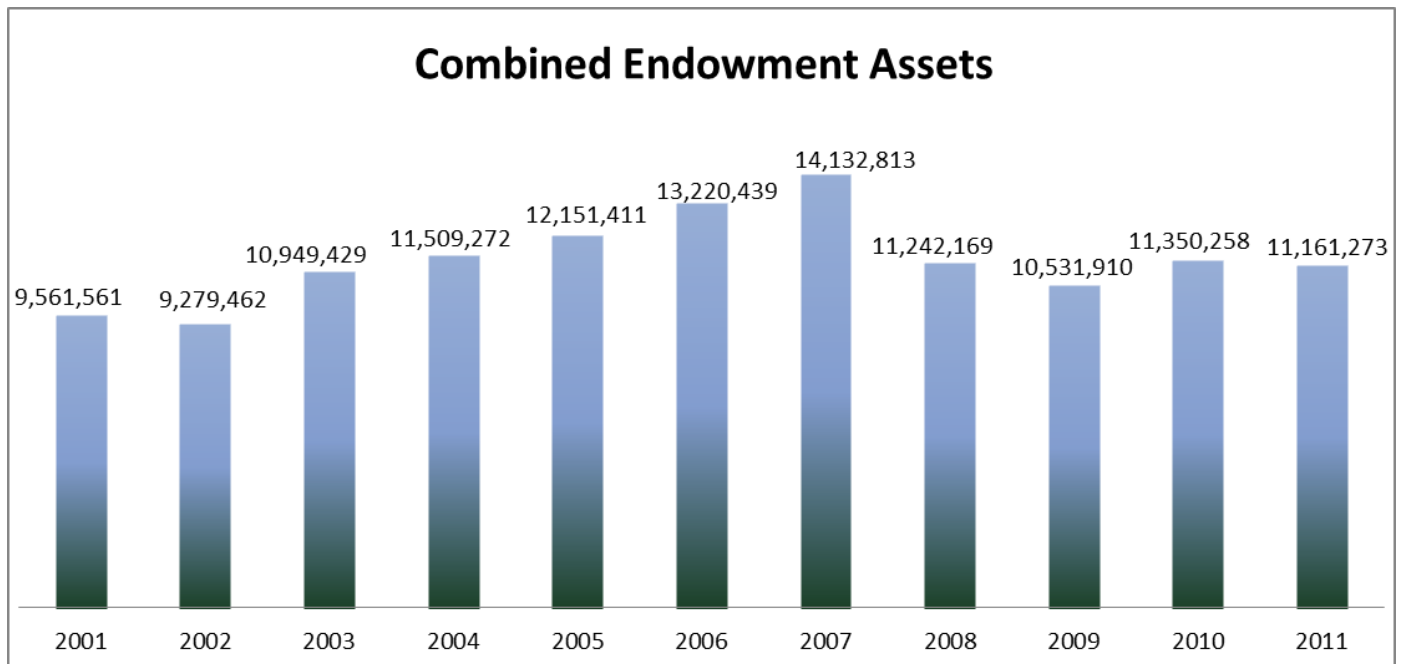


Combined Endowment Assets and Development Foundation

(Market Value)

Fiscal Year	*Amount	% Change
1999	\$9,218,091	---
2000	\$9,728,650	5.50%
2001	\$9,561,561	-1.70%
2002	\$9,279,462	-3.00%
2003	\$10,949,429	18%
2004	\$11,509,272	5.10%
2005	\$12,151,411	5.60%
2006	\$13,220,439	8.80%
2007	\$14,132,813	6.90%
2008	\$11,242,169	-20.45%
2009	\$10,531,910	-6.32%
2010	\$11,350,258	5.23%
2011	\$11,161,273	-1.67%

Data Source: Percent Change Calculator and MSU Schedule of Development Foundation and MSU Gift Investments*As reported on September 30 each year



Tuition and Fees per Semester

Undergraduate	01-02	02-03	03-04	04-05	05-06	06-07	07-08	08-09	09-10	10-11	11-12	% Chg
Resident	\$1,276.75	\$1,402.64	\$1,614.00	\$1,856.00	\$2,046.00	\$2,245.90	\$2,386.44	\$2,521.80	\$2,694.88	\$2,818.80	\$2,881.50	2.22
Contiguous States and Provinces	\$1,557.25	\$1,695.64	\$1,955.25	\$2,251.00	\$2,478.50	\$2,718.90	\$2,882.94	\$3,044.30	\$2,694.88	\$2,818.80	\$2,881.50	2.22
Minnesota Reciprocity	\$1,411.75	\$1,590.14	\$1,811.50	\$2,046.00	\$2,202.00	\$2,389.40	\$2,514.94	\$2,614.80	\$2,694.88	\$2,818.80	\$2,881.50	2.22
WUE**	\$1,838.00	\$1,947.00	\$2,296.00	\$2,646.00	\$2,911.00	\$3,192.40	\$3,379.94	\$3,566.80	\$2,694.88	\$2,818.80	\$2,881.50	2.22
Non-Resident	\$3,150.25	\$3,359.64	\$3,893.50	\$4,494.50	\$4,935.00	\$5,408.90	\$5,707.44	\$6,011.30	\$2,694.88	\$2,818.80	\$2,881.50	2.22
Graduate	01-02	02-03	03-04	04-05	05-06	06-07	07-08	08-09	09-10	10-11	11-12	% Chg
Resident	\$1,636.75	\$1,787.64	\$2,055.00	\$2,366.00	\$2,605.00	\$2,857.40	\$3,028.44	\$3,195.80	\$3,392.46	\$3,540.72	\$3,621.53	2.28
Contiguous States & Provinces	\$2,377.75	\$2,566.14	\$2,958.00	\$3,411.00	\$3,749.50	\$4,110.90	\$4,344.44	\$4,577.80	\$3,392.46	\$3,540.72	\$3,621.53	2.28
WUE**	\$2,378.00	\$2,524.00	\$2,958.00	\$3,411.00	\$3,750.00	\$4,110.90	\$4,344.44	\$4,577.80	\$3,392.46	\$3,540.72	\$3,621.53	2.28
Minnesota Reciprocity	\$2,037.75	\$2,302.14	\$2,638.00	\$3,023.00	\$3,228.00	\$3,493.40	\$3,670.94	\$3,804.80	\$3,392.46	\$3,540.72	\$3,621.53	2.28
Non-Resident	\$4,111.75	\$4,387.64	\$5,071.00	\$5,856.00	\$6,427.50	\$7,042.90	\$7,422.94	\$7,811.30	\$3,392.46	\$3,540.72	\$3,621.53	2.28

Percent Change Dale Gehring- Financial Aid s

Tuitions and fees are for on-campus courses. The tuition and fees charged for most on-campus courses cap at 12 credits. Distance education courses do not cap at 12 credits, charges are calculated on all credits. In addition to the tuition and fees listed above, all distance courses will be charged an additional fee.

Distance education courses are charged an additional access fee. The access fee is a per credit charge to a student to cover the added costs associated with delivery of a course. The fee varies from \$5 per credit for Bismarck courses to \$42.50 per credit for online courses. Undergraduates may take up to 18 credits before an additional fee is charged. Graduate credits are capped at 12 credits for the tuition noted above.

*The 2004-2007 tuition rates include the ConnectND fee.

A full-time student, for tuition purposes, is a person who is enrolled in 12 or more semester hours of credit. The cost of tuition and fees for part-time enrollments is prorated. Some distance education courses pay per credit. These courses are not part of the 12 credit cap for charges.

** Western Undergraduate Exchange Enrollment. In 2005-06, states that are a member of WUE include: Alaska, Arizona, California, Colorado, Hawaii, Idaho, Nevada, New Mexico, Oregon, Utah, Washington, and Wyoming. Montana is also a member of WUE, but Montana students receive the contiguous states tuition.

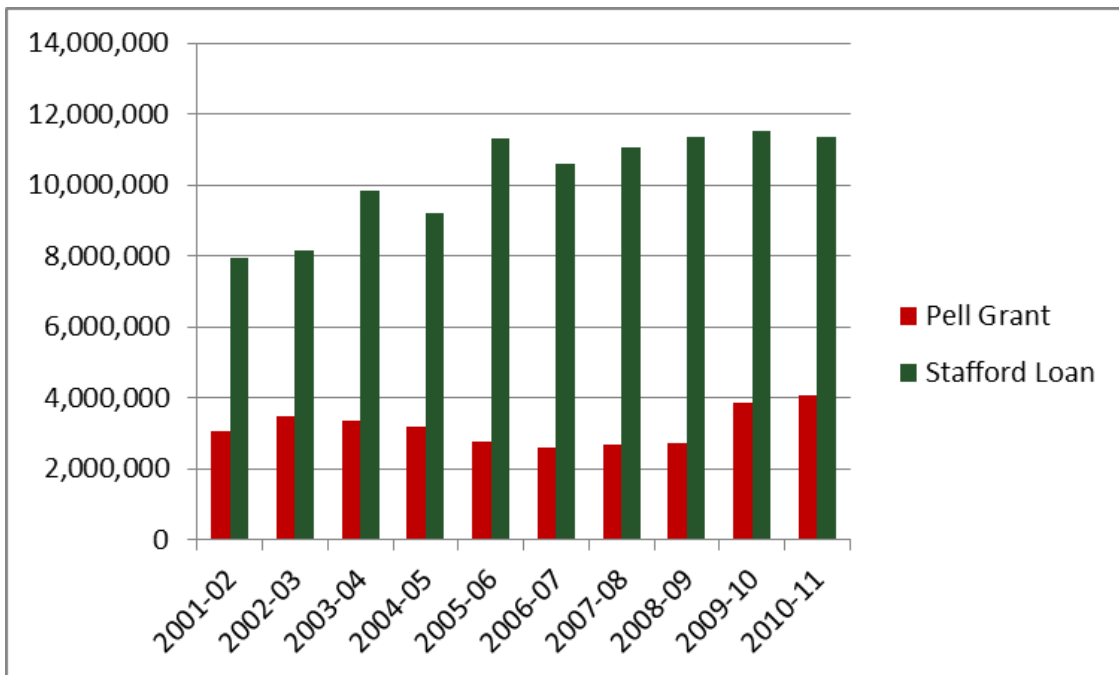
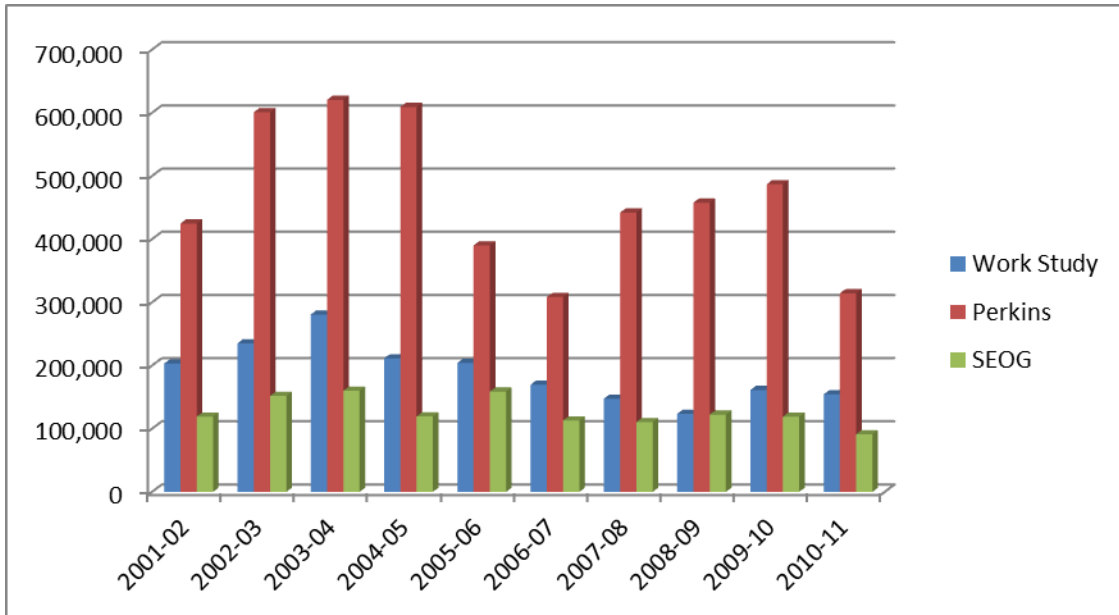
Type of Aid and Dollar Amount by Year

Academic Year	Work Study	Perkins	SEOG	Pell Grant	Stafford Loan	Total
1999-00	\$212,062	\$464,597	\$116,571	\$2,451,964	\$7,061,669	\$10,306,863
2000-01	\$217,063	\$397,089	\$114,784	\$2,653,456	\$7,587,671	\$10,970,063
2001-02	\$203,240	\$424,820	\$119,090	\$3,082,967	\$7,946,557	\$11,776,674
2002-03	\$235,136	\$600,835	\$151,777	\$3,482,579	\$8,158,218	\$12,628,545
2003-04	\$280,767	\$620,393	\$160,088	\$3,373,066	\$9,837,158	\$14,271,472
2004-05	\$211,054	\$609,178	\$119,375	\$3,179,660	\$9,197,139	\$13,316,406
2005-06	\$204,128	\$390,183	\$158,731	\$2,778,715	\$11,300,779	\$14,832,536
2006-07	\$169,616	\$308,403	\$113,024	\$2,614,624	\$10,613,747	\$13,819,414
2007-08	\$147,415	\$441,995	\$110,400	\$2,709,891	\$11,054,729	\$14,464,420
2008-09	\$123,373	\$457,753	\$122,255	\$2,744,696	\$11,369,905	\$14,817,982
2009-10	\$161,269	\$486,816	\$119,050	\$3,886,671	\$11,537,403	\$16,191,209
2010-11	\$154,262	\$314,304	\$91,261	\$4,085,030	\$11,370,864	\$16,015,721

Data Source: Minot State University Office of Financial Aid and previously released MSU Factbooks.

Continued

Financial Aid Trends



Student Activity Fee Distribution

The per-semester fee for full-time students is separated into two portions: the university fee and the Student Government activity fee. The university fee supports activities that benefit the student body as a whole, while the Student Government activity fee goes toward supporting specific activities. The tables below provide a breakdown of the allocation of these fees. These are added to the tuition and are charged per semester.

University Fee	04-05	05-06	06-07	07-08	08-09	09-10	10-11	11-12
Student Center	\$7.50	\$7.50	\$7.50	\$7.35	\$7.50	\$0.00	\$0.00	\$0.00
Student Health	\$20.00	\$20.00	\$20.00	\$40.00	\$40.00	\$35.00	\$35.00	\$35.00
Gordon B. Olson Library	\$15.00	\$15.00	\$15.00	\$15.00	\$15.00	\$0.00	\$0.00	\$0.00
University endowment	\$1.50	\$1.50	\$1.50	\$1.50	\$1.50	\$1.50	\$1.50	\$1.50
Athletics	\$36.50	\$42.50	\$42.50	\$52.50	\$60.50	\$65.40	\$80.40	\$80.40
Health and Wellness Center	\$0.00	\$0.00	\$0.00	\$0.00	\$0.00	\$125.97	\$125.97	\$125.97
Fitness Center	\$0.00	\$5.00	\$25.00	\$25.00	\$25.00	\$25.00	\$45.00	\$45.00
Student Placement	\$9.80	\$9.80	\$17.00	\$17.00	\$17.00	\$22.00	\$26.00	\$26.00
Total	\$90.30	\$101.30	\$128.50	\$158.35	\$166.50	\$274.87	\$313.87	\$313.87
Student Government Activity Fee	04-05	05-06	06-07	07-08	08-09	09-10	10-11	11-12
NW Art Center (Art Gallery)	\$1.75	\$1.93	\$2.90	\$2.90	\$2.90	\$0.00	\$0.00	\$2.90
Theatre Arts	\$2.61	\$2.61	\$2.61	\$2.61	\$2.61	\$2.61	\$2.61	\$2.61
Music	\$2.75	\$2.75	\$3.50	\$3.50	\$3.50	\$0.00	\$3.50	\$3.50
Student Tours	\$3.07	\$3.07	\$3.07	\$3.07	\$3.07	\$3.07	\$4.00	\$5.00
Student Government Association	\$16.60	\$16.60	\$16.60	\$21.00	\$27.00	\$27.00	\$27.00	\$27.00
Student Activities	\$8.20	\$8.20	\$10.00	\$15.00	\$25.00	\$25.00	\$25.00	\$25.00
Publications	\$8.08	\$8.08	\$10.08	\$10.08	\$10.08	\$10.08	\$10.08	\$10.08
KMSU	\$3.25	\$3.25	\$3.25	\$3.25	\$3.25	\$3.25	\$3.25	\$3.25
Homecoming	\$0.00	\$4.00	\$4.00	\$6.00	\$9.00	\$9.00	\$9.00	\$9.00
Multicultural Center	\$2.00	\$2.00	\$2.00	\$4.00	\$4.00	\$4.00	\$4.00	\$4.00
Building Renovations	\$10.00	\$10.00	\$10.00	\$10.00	\$10.00	\$10.00	\$10.00	\$10.00
Orientation	\$2.00	\$2.00	\$2.00	\$0.00	\$0.00	\$0.00	\$0.00	\$0.00
Reserve	\$2.03	\$2.03	\$2.03	\$2.03	\$2.03	\$0.00	\$0.00	\$0.00
Student Clubs	\$0.00	\$2.00	\$2.00	\$2.00	\$5.00	\$5.00	\$5.00	\$5.00
Hockey Club	\$0.00	\$5.00	\$7.00	\$7.00	\$10.00	\$10.00	\$12.00	\$13.00
Mentoring	\$0.00	\$0.00	\$0.00	\$1.50	\$1.50	\$1.50	\$1.50	\$1.50
Tutoring	\$0.00	\$0.00	\$0.00	\$3.00	\$3.00	\$3.00	\$3.00	\$5.00
Beaver Athletic Band	\$0.00	\$0.00	\$0.00	\$0.00	\$2.50	\$2.50	\$2.90	\$2.50
Marching Band								\$3.00
Total	\$62.34	\$73.52	\$81.04	\$96.94	\$124.44	\$116.01	\$122.84	\$132.34

*Retention of First-year Students
1998-2011*

Term	Full-time First Time Freshmen	Term	Still Enrolled	Retention Percentage
Fall 98	418	Fall 99	264	63%
Fall 99	525	Fall 00	301	57%
Fall 00	511	Fall 01	315	62%
Fall 01	506	Fall 02	321	63%
Fall 02	551	Fall 03	321	58%
Fall 03	396	Fall 04	248	*62.7%
Fall 04	393	Fall 05	274	70.00%
Fall 05	445	Fall 06	279	62.70%
Fall 06	483	Fall 07	292	60%
Fall 07	419	Fall 08	291	69%
Fall 08	406	Fall 09	284	70.00%
Fall 09	419	Fall 10	296	71%
Fall 10	462	Fall 11	291	63%

Source: People+Soft NDU02SRK – NDU02SRL and IPEDS Spring Report Part E. Previous years indicated duplicated numbers and withdrawal students for 4th week.

"New Calculation: 1998 – 2002 Calculation for Retention: All new freshmen who return the following year. *2004 Calculation for Retention: New freshmen enrolled Fall 2003 (12 semester hours or more) and returned for any number of credits in Fall 2004."

Undergraduate Graduation Rates
2004-2011

Graduation Rates	2004	2005	2006	2007	2008	2009	2010	2011	2012
Percentage rate of students who graduate within 6 years or less from original cohort.	30	29	27	31	30	31	39	34	TBA

Data Source: IPEDS Graduation Rates and Common Data Set

Library Holdings

Item	2001	2002	2003	2004	2005	2006	2007	2008	2009	2010	2011
Books	170,576	173,655	175,470	178,983	182,832	185,804	189,159	188,158	190,215	191,384	193,354
Periodicals	55,288	56,936	58,215	59,340	60,205	63,127	65,670	42,126	42,402	43,092	39,593
Documents	172,896	176,752	177,772	182,146	185,370	188,633	191,775	181,113	182,744	180,200	185,765
Microfilm	11,268	11,332	11,435	11,468	11,517	11,564	11,614	11,657	11,642	11,642	11,642
Microfiche	658,714	668,720	676,273	698,389	706,507	709,999	714,277	711,859	625,820	632,314	638,896
Subscriptions*	843	805	802	752	668	693	693	532	520	530	520
Maps	117,964	119,432	120,837	121,559	122,350	123,173	123,914	124,519	124,626	124,800	125,000
Non-Print Materials	13,392	13,625	13,743	14,835	15,185	15,487	16,007	16,335	16,997***	17,375	17,514
Disc Recordings	4,174	4,173	4,173	4,173	4,173	4,173	4,172	4172	--	--	--
Cassettes	3,942	3,948	3,946	3,938	3,951	3,952	3,949	3949	--	--	--
Videotapes	2,604	2,785	2,846	2,927	2,994	3,234	3,253	3267	--	--	--
Software	90	94	96	100	104	103	96	116	--	--	--
Compact Disks	1,657	1,698	1,757	1,853	2,003	2,080	2,359	2429	--	--	--
DVD**						274	454	641	--	--	--

Data Source: Stephen Banister ~MSU Library *Current journals, serial and newspaper subscriptions. ** Added in 2006
 ***Non-print materials include disc recordings, cassettes, videotapes, software, compact disks, DVD, curriculum materials and miscellaneous items

Library-use Figures

Year	2001-02	2002-03	2003-04	2004-05	2005-06	2006-07	2007-08	2008-09	2009-10	2010-11
Materials Provided by Other Institutions	5,171	5,815	6,481	*6,233	7,594	4,547	4,667	4,193	3,209	4,966
Materials Requested by Other Institutions	4,461	4,590	4,685	*3,789	4,461	4,593	4,316	4,450	2,614	2,282

Data Source: Stephen Banister ~MSU Library * Correction by library from data reported in 2005

Type of Material Ordered

	2001-02	2002-03	2003-04	2004-05	2005-06	2006-07	2007-08	2008-09	2009-10	2010-11
Books	1,446	1,526	1,373	1,437	2,246	1,861	2894	2,900	1574	2575
Articles	3,078	3,558	4,147	2,746	3,045	2,686	1773	1293	1635	2391

Electronic Reserve

E-Reserve Item	2002	2003	2004	2005	2006	2007	2008	2009	2010	2011
Faculty with accounts on E-Reserve	98	107	111	140	158	128	151	155	180	177
Courses with pages on E-Reserve	291	336	407	417	424	244	359	379	385	407
Documents on E-Reserve	2,957	3,722	4,540	5,945	7,085	1,847	*	9,785	10,954	12,228

Access of Electronic Reserve Pages Based on the fiscal year

	2002-03	2003-04	2004-05	2005-06	2006-07	2007-08	2008-09	2009-10	2010-11
Course Page	28,129	22,095	16,825	21,710	21,055	22,946	25,914	29,344	40,552
Eres Home Page	69,041	40,847	22,525	28,579	23,307	24,798	27,479	31,491	44,518

Data Source: MSU Library Director

Book Expenditures

Year	2001-02	2002-03	2003-04	2004-05	2005-06	2006-07	2007-08	2008-09	2009-10	2010-11
Book Expenditure	\$91,303.35	\$42,977.27	\$78,832.53	\$105,871.33	\$96,666.05	\$97,099.08	60,283.14	\$59,243.06	60,381.21	\$60,033.57
Items Ordered	2,341	1,311	2,514	3,849	2,600	2,945	1,228	1,582	1,380	1,380
Average Cost/Book	\$39.00	\$32.78	\$31.36	\$27.51	\$37.18	\$32.97	\$49.09	\$37.45	\$43.75	\$37.68

Circulation of Library Materials

	2001-02	2002-03	2003-04	2004-05	2005-06	2006-07	2007-08	2008-09	2009-10	2010-11
Number	29,264	29,487	30,521	30,468	23,377	21,111	18,919	20,246*	19,489	17,380
% Chg	-5.7	0.76	3.5	-0.2	-23.3	-9.7	-10.3	7	-3.7	-10.8

Circulation of Material by User Class

User	2003-04	2004-05	2005-06	2006-07	2007-08	2008-09	2009-10	2010-11
Students	21,022	21,076	15,257	14,058	13,334	12,641	12,714	10,506
Faculty	6,279	6,447	6,216	5,672	4,266	5,024	5,007	4,564
Local Patron	1,108	1,001	1,022	469	639	759*	969	896
Interlibrary Loan				912	680	790*	799	1,414

Data Source: MSU Library Director

FACTBOOK: Technology at Minot State University

Information Technology (IT) is a strategic necessity for Minot State University. Fundamental tools including e-mail, calendaring, file sharing, and Web access are important for administrative, academic, and research functions, and basic day-to-day operations. High speed networking, high performance computing, collaboration voice and data tools, and other advanced technology services create innovative opportunities for the institution.

A reliable and redundant network infrastructure is the backbone on which all other services depend. IT infrastructure refers to the entire technology architecture that supports student, faculty, staff, and administrator computing activities on campus and from a distance. Components that make up the current technology architecture include, but are not limited to, switched and routed network backbone, wireless Internet access, and production support servers and appliances (email, calendar, and voicemail integration, file and print, backup, Web, network support, directory services, authentication, firewall, filtering/bandwidth management, intrusion detection, patch management, antivirus gateway, spam filtering, remote access control, rapid application deployment, network/application resource monitoring, and secure network access).

The network infrastructure is the key component to support expanding technology development across campus. The wired network needs to remain a reliable, robust, and secure transport system to meet the needs of the campus community and support access to the latest voice, data, and video technology. Today, all edge switches support transfer rates up to 1 Gigabyte per second (1000 Mbps) from the core to the desktop. Construction will begin mid-December 2011 on a centralized data center with optimal environment controls and expansion capability to house and support campus fiber connectivity and the campus server farm. The rebuild of the campus fiber network will begin spring 2012. The new air-blown fiber network will improve overall efficiencies and performance, and bring core transfer rates to 10 Gigabytes per second (Gbps) on the campus backbone.

Infrastructure holds information technology systems together and allows systems to communicate with each other over a network. MSU participates in STAGENet, the state-funded wide area network (WAN) consortium. STAGENet offers reliable, cost-effective network services, enables convergence of voice, data, and video, and provides linkage through Internet2 and the Northern Tier Network to national and international research and development networks.

A critical component of the current and future technology infrastructure is security. In the past, access to computing and network resources was maintained in a relatively controlled environment with minimal remote or online access. Making information available over the network and Web has increased the risk of unauthorized access or inappropriate use of information. Data security measures have been implemented to secure data, especially with regard to the campus document imaging system. ImageNow has alleviated the time-consuming inefficiencies of manually filing and retrieving documents for the Financial Aid Office, Records Office, Enrollment Management, Graduate School, and other on-campus departments.

User authentication is required to access the campus wireless network. The campus ID card system is designed to simplify access to services, events, and secure locations throughout campus. Security

cameras are strategically located in campus buildings and selected outside areas (parking lots, etc.) to maximize visual security for all campus constituents. Other security and data protection initiatives in place relate to regular patching of critical systems, robust antivirus and SPAM filtering, and reliable archives (real-time offsite storage, disk-to-disk-to-tape) of important data in the event of hardware or application failure. The Notifind emergency notification system is in place to ensure timely notifications to all faculty, staff, and students in the event of an emergency. Blue lights, campus-wide speaker system, and “panic” buttons located in strategic areas are currently in the planning stage.

Information technology is an important component of the instructional and learning experience and is integral to research, teaching, and learning. MSU supports over 350 computers in twelve general access and teaching labs on campus and at the Minot Air Force Base Education Center. Software for campus labs is distributed and maintained from a common set of software images which provides timely distribution of software images, rapid install application packages, and critical Windows and antivirus signature file updates. Numerous niche labs exist in support of specialized training for students (arts, sciences, humanities, nursing, education, business, etc.). Internet capable learning spaces and kiosks are strategically located across campus to “informally” engage students in learning opportunities. Computer systems equipped with assistive technologies including Jaws, ZoomText, 21-inch monitors, monitor lifts, etc., are available in open-access computer labs for persons with disabilities and special needs. Every student receives a life-time MSU campus email account (Live@Edu), hosted by Microsoft, to receive official campus communications regarding Add/Drop Deadlines, Registration Information, Financial Aid, Campus Events, Emergency Notices, and more. The “Live” account provides access to additional services including online space for file storage, file sharing, and collaboration.

Students attending Minot State University join a community of people devoted to creating and sharing information—activities that can be enhanced by information technology. Whether a full- or part-time student, living on campus or commuting, technology is available that allows for communication, personal development, and getting together (in person and virtually). BlackBoard CE 8 is the campus course management system supporting over 200 fully online courses as well as “blended courses” in which faculty enhance their face-to-face classes with interactive online learning experiences. Six degree programs are currently available totally online. Online orientation and full library services are available to all students. Blackboard supports deployable 3rd party power links for added functionality including Wimba video and voice conferencing, Respondus lock down browser for secure testing, SafeAssign, and SunGard product integration. Staff in the Office of Instructional Technology (OIT) is working in the new Blackboard environment, **Learn Release 9.1**. The timeline for full migration to the new version of Blackboard is fall 2012/spring 2013. Blackboard Learn will empower instructors to engage every learner by motivating them on the devices that they rely on.

Collaborative teaching tools provide an interactive and engaged teaching and learning environment for faculty and students. Microsoft Sharepoint Services creates a single access point for faculty and students to engage in document sharing and team-based learning. Other Web-based collaboration tools are available to students and faculty including blogs and wiki sites. Maple T.A. complements the online course management system by providing Web-based testing and assessment for mathematics, science, or any course that requires mathematics. An Adobe Connect meeting server is available for use by faculty and administrators to bring real-world functionality to online meetings and provide faculty and students the opportunity to communicate and collaborate instantly.

A majority of the classrooms on campus are equipped with permanently installed video projection systems and other technology enhancements. Classroom technology, whether permanently installed or delivered on demand, is available in all academic buildings. Five classroom locations have videoconferencing capability, including high definition. A full-time IVN coordinator provides the scheduling and daily support for all video-enabled classrooms. IT staff registers and certifies the required wiring and equipment for new video-enhanced classrooms. Videoconferencing software is available for both PCs and Macs to allow users to join a traditional IVN class in session from their home or office or collaborate via “Meet Me”, bridging the “on site” requirement gap.

Centralized IT staff provides support for a broad range of technology-enhanced services for faculty, staff, and students. Increased availability of and access to computing resources requires equally robust support services that make it easier for all students to succeed. MSU recognizes the strong connection between the quality of education and the quality of technology services available to students. IT Central (ITC) is a centrally located service organization comprised of a director, senior systems administrator, network operations manager, campus lab/desktop coordinator, electronics specialist, Help Desk coordinator, wiring technician, and Web designer/developer. In addition to working in a specific area of specialization, all technicians provide desktop support and actively test and evaluate new server- and network-based technologies to achieve increased flexibility and improve system responsiveness.

The Help Desk is a significant component of ITC. The office is open six days per week and is the University's first line of support relative to computer software and hardware issues, the use of instructional technology, access to server support services, and resolution of network-related problems. Help Desk services for students include hardware and software installation, equipment checkout (laptop, desktop, digital camera, projector, mini hub, etc.), removal of spyware and computer viruses, file storage, Web space, and software downloads are available to all students free of charge. Academic pricing for many Microsoft and Adobe/Macromedia software titles is available through a partnership with Barnes & Noble and Journey Ed. Wired and wireless Internet access is available in the residence halls and across campus free of charge. There are over 1200 active data ports and 70+ wireless access points.

MSU has implemented numerous information services and systems, transforming the way the campus engages in educational and business processes. Active Directory authentication streamlines the process for rolling out new and innovative services. An antiquated Avaya telephone system has been replaced with Shoretel to provide call management. Microsoft Exchange Server currently provides email, calendaring, and voicemail on a single integrated system. Exchange along with Microsoft Lync (formerly known as Office Communications Server) for full “unified communications” has been a major accomplishment for Minot State University. Unified communications simplifies and improves the way employees communicate. When staff receives a voice mail message, he or she can choose how to access it, whether through an email client, or from landline or cell phone. Staff is able to determine the sender’s availability or “presence” and respond immediately through instant message, audio call, or video conference. Unified communications extends that same functionality to any telephone or mobile device.

Filename: Facebook_IT_FY12_Revisions

Rev: 10/31/2011

Data Sources

Data utilized to compile information for the Minot State University 2010 Fact Book include the following sources:

- Advancement, Minot State University
- Alumni Office, Minot State University
- Business Office, Minot State University
- Center for Extended Learning, Minot State University
- Computer Center, Minot State University
- Gordon B. Olson Library, Minot State University
- Grants and Contracts Office, Minot State University
- Information Technology Center, Minot State University
- MSU Fact Books – 1998 through 2010
- MSU Integrated Postsecondary Education Data Statistics Reports – Registrar’s Office
- MSU Fourth Week Reports, September 2011
- North Dakota University System Office, Bismarck, ND
- Office of Institutional Research, Minot State University
- President’s Office, Minot State University
- Registrar’s Office, Minot State University
- Student Affairs, Minot State University
- Undergraduate Catalog, Minot State University
- United States Department of Education Institute of Education Sciences, National Center for Education Statistics, Integrated Postsecondary Education Data System (IPEDS)

Glossary

The following definitions are taken directly from the U.S. Department of Education's NCES/IPEDS Web site. For more definitions, use IPEDS Web site: <http://nces.ed.gov/ipeds/glossary/index.asp?charindex>

Degree: An award conferred by a college, university or other postsecondary education institution as official recognition for the successful completion of a program of studies.

First-year: A student who has completed less than the equivalent of one full year of undergraduate work; that is, less than 30 semester hours (in a 120-hour degree program) or less than 900 contact hours.

Freshman: A first-year undergraduate student.

Full-time Equivalent: A measurement equal to one student enrolled full-time for one academic year. Total FTE enrollment includes full-time plus the calculated equivalent of the part-time enrollment. The full-time equivalent of the part-time students can be estimated using different factors depending on the type and control of institution and level of student.

Full-time Student: Undergraduate — a student enrolled for 12 or more semester credits, or 12 or more quarter credits, or 24 or more contact hours a week each term. Graduate — a student enrolled for nine or more semester credits, or nine or more quarter credits, or a student involved in thesis or dissertation preparation that is considered full-time by the institution.

Graduate: A student who holds a bachelor's or first-professional degree or equivalent, and is taking courses at the post-baccalaureate level. These students may or may not be enrolled in graduate programs.

Graduation Rate: The rate required for disclosure and/or reporting purposes under Student Right-to-Know policy. This rate is calculated as the total number of completers within 150 percent of normal time divided by the revised cohort minus any allowable exclusion.

Retention Rate: A measure of the rate at which students persist in their educational program at an institution, expressed as a percentage. For four-year institutions, this is the percentage of first-time bachelor's (or equivalent) degree-seeking undergraduates from the previous fall who are again enrolled in the current fall. For all other institutions, this is the percentage of first-time degree/certificate-seeking students from the previous fall who either re-enrolled or successfully completed their program by the current fall.

Undergraduate: A student enrolled in a four- or five-year bachelor's degree program, an associate's degree program or a vocational or technical program below the baccalaureate.