



Minot State
UNIVERSITY

2008 Fact Book

Minot State University

500 University Avenue West
Minot, North Dakota 58707

2008 Fact Book

Acknowledgements: The Academic and Institutional Projects Office would like to extend a heartfelt thank you to personnel in the following offices who supplied data and information for the 2008 Fact Book:

- Academic Affairs
- Student Affairs
- North Dakota University System
- Gordon B. Olson Library
- Center for Extended Learning
- Registrar's
- Advancement
- Human Resources
- Administration & Finance
- The MSU Graduate School

Preface

Mission Statement

The Office of Academic and Institutional Projects (AIP) at Minot State University supports the University's planning and decision-making efforts so that the University can fulfill its larger mission. The office responds to requests from constituencies of the University in order to support decision-making, assessment, policy analysis, effective management, projections and planning. It also responds to requests for information from outside agencies and other institutions and generates annual Factbooks and reports showing trends and comparisons to the North Dakota University System Office.

The goals of the AIP office are to ensure that reports and analyses are accurate, timely and useful to Minot State University administrators, faculty, students, and staff. To guarantee that this mission is carried forward, the Director and Coordinator work carefully to ensure that files dealing with student course and personnel data are as accurate and consistent as possible.

The AIP Office of Minot State University is pleased to present the 2008 Fact Book. This is an annual and cumulative production providing an ongoing view of trends and documents areas of growth and development, diversity and challenge.

Cari A. Olson, MS, - academic and institutional projects, coordinator

2008 Fact Book Highlights

Student Enrollment

Faculty Trends

Degree Highlights 2008

MSU Finance

Table of Contents

Acknowledgments	i
Preface & Fact Book 2008 Highlights	ii
Table of Contents	iii
Accrediting Agencies	1
Administration	2
Board of Regents Executive Committee	3
MSU Alumni Association Board of Directors and Members	3
MSU Development Foundation Board of Directors and Members	4
NDUS Administrative Officers.....	5
Minot State University Organizational Chart.....	6
Vice President of Academic Affairs Organizational Chart.....	7
MSU Administrative Offices	8-9
MSU Student Information	10
North Dakota University System Fall Enrollment 1997-2008	11
Enrollment by Classification and Gender 2008.....	12
Student Enrollment Highlights 2005-2008.....	13
Student Enrollment Highlights: FTE/Total 1997-2008	14
Fall Enrollment – Headcount 1997-2008	15
Head Count Enrollment/Full-Time Equivalent, Headcount by Status/Year 1997-2008 ..	16
Full Time Undergraduates by Status 1997-2008	18
Part-Time Undergraduate Enrollment 1997-2008	19
Total Undergraduate 1997-08 and Total Graduates 1997-08.....	20
Enrollment by Gender 1997-2008.....	21
Full and Part Time Graduate and Undergraduate by Gender 2007-08	22
Enrollment Totals by Ethnicity 1997-2008	23
Enrollment by Residency 1997-2008.....	24
New Students, Transfers, and OTAS 1997-2008	25
OTAS Full and Part Time by Gender and Totals 1997-2008.....	26
Map of Enrolled Students by North Dakota County Fall 2008	27
Enrollment by North Dakota County 1997-2008	28-29
Map of Freshman Students by North Dakota County Fall 2008	30
Freshman by North Dakota County 1997-2008.....	31-32
Enrolled Students by State of Origin Fall 2004 through 2008	33
Enrolled Students by State of Origin 1997-2008.....	34
International Student Enrollment & Classification Fall 2008	35
Center for Extended Learning Headcounts Fall 2001-2008.....	36-37
New Freshman Applications & Enrollment Patterns 1999-2008	38
Retention of New Freshmen 1998-2008	38
New Transfer Applications & Enrollment Patterns 1999-2008	38
Institutional Average GPA Undergraduate and Graduate 1998-2008	39
Comparison of ACT Averages	39
Student Housing by Residence and Average Costs of Residence 2002-2008	40
Residence Hall Disciplinary Actions 2000 - 2008.....	40
Minot State University Crime Statistics – Calendar Year 1999–2008	41

Majors and Degree Information.....	42
Declared Majors College of Arts and Sciences 1998–2008.....	43-44
Declared Majors College of Education and Health Sciences 1998–2008	44
Declared Majors College of Business and the Graduate School 1998–2008.....	45
Degrees Conferred College of Arts and Sciences 1998-2008	46-47
Second Majors Reported to IPEDS College of Arts and Sciences 2005-2008	48
Degrees Conferred College of Education and Health Science 1998-2008	49
Second Majors Reported to IPEDS College of Education and Health Science 2005-08 ..	50
Degrees Conferred College of Business 1998-2008	50
Second Majors Reported to IPEDS College of Business 2005-08	50
Certificate Programs 2000-2008	51
Graduate Programs and Graduate Certificate 1998-2008	52
Degrees Conferred Undergraduate and Graduate 1998-2008 by First Majors	53
Undergraduate Degrees by Degree Type by First Majors 2003-2008.....	54
Graduates by College 1998-2008 by First Major	54
MSU Faculty and Staff Information	55
Faculty Status and Gender Distribution 1998-2008.....	56
Total Faculty by Year and Status (full or part time and non-teaching)	56
MSU Average Faculty Salaries by Rank 1998-2008	57
MSU Staff by Job Family and Gender Fall 2008	57
Full-time Faculty by Rank and Gender Distribution 1998-2008.....	58
MSU Tenured Faculty by Rank and Gender 1998-2008	59
Headcount of Faculty in FT and PT categories by Highest Degree	60
MSU Financial Information.....	61
Tuition and Fee Comparison 1997-98 to 2007-2008	62
Tuition and Fee Compared to Household Income 1997-1998 to 2007-2008.....	62
MSU Cost per Student - FY 2001 to FY 2008	63
Administrational, Instructional, and Other Costs per Student - FY 2001 to FY 2008 ..	64
Percentage of MSU funding for Academic Support, Etc - FY 2001 to FY 2008.	64
Operating and Contributed Income Ratio - FY 2001 to FY 2008	65
Grants and Contracts - 1997-1998 to 2007-2008	66
Combined Endowment Assets 1999 to 2008.....	67
Student Fees and Financial Aid.....	68
Tuition and Fees, Semester Rates – 2001-2002 through 2007-2008	69
Student Activity Fee Distribution - 2006-2008	70
Student Financial Aid Requested/Awarded and Type of Aid and Dollar Amount	71
Financial Aid Trends 1999-2000 through 2007-2008.....	72
Information Resources.....	73
Library Holdings 1998 to 2008.....	74
Library-use Figures and Types of Materials Ordered 1999 to 2008	74
Access of Web Pages 2002 to 2008	74
Electronic Reserves 2002–2006, Book Expenditures 1998–2008.....	75
Circulation of Library Materials 2000 to 2008.....	76
Circulation of Material by User Class 2000 to 2008	76
Information Technology Central Report	77-79
Sources	80
Glossary	81

Accrediting Agencies

- ✓ **The Higher Learning Commission**
North Central Association of Colleges and Schools
30 N. LaSalle Street, Ste 2400, Chicago, IL (800) 621-7440
- ✓ **National Council for Accreditation of Teacher Education**
2010 Massachusetts Avenue NW, Suite 500, Washington D.C., 20036-1023
- ✓ **National Association of Schools of Music**
11250 Roger Bacon Drive, Suite 21, Reston, VA 20190-5248
- ✓ **Council on Education of the Deaf**
Kent State University, Kent, OH 44242-0001
- ✓ **Council on Academic Accreditation of the American Speech-Language-Hearing Association**
10801 Rockville Pike, Rockville, MD 20852-3279
- ✓ **Council on Social Work Education–Baccalaureate level**
1600 Duke Street, Alexandria, VA 22314-3421
- ✓ **International Assembly for Collegiate Business Education**
PO Box 25217, Overland Park, Kansas 66225, (913) 631-3009
- ✓ **National League for Nursing Accrediting Commission, Inc.**
Broadway 33rd Floor, New York, NY 10006
- ✓ **National Association of School Psychologists**
PO Box 791089, Baltimore, MD 21279-1089
- ✓ **North Dakota Board of Nursing**
919 7th Street, Suite 504, Bismarck, ND 58504-5881

***Minot State
University
Administration***

**Board of Regents
Executive Committee**

Executive Chair -----	Kathy Aas
Past Executive Chair -----	Don Hummel
MSU President -----	David Fuller
Treasurer -----	Ron Dorn
Secretary -----	Marv Semrau
Chair Elect -----	David Reiten
Member at Large -----	Grace Fisher

**MSU Alumni Association
Board of Directors**

Executive Committee

President-----	Brenda Foster
Past President-----	Darwin Langseth
President-Elect -----	
Vice President for Promotions -----	Ryan Hertz
Vice President for Events -----	Verla Rostad
Vice President for Outreach -----	Linda Christianson
Director of Annual Giving and Alumni Relations -----	Tawnya Bernsdorf
MSU President -----	David Fuller

Members

Robert Anderson	Blake Hanson	Ann Rivera
Kristi Berg	Trisha Nelson	Amy Simons
Leslie Barney	Kelly Hayhurst	Ellen Simmons
Randy Burckhard	Diana Olson	Angela Zerr
Linda Christianson	Lisa M. Olson	Mike Gietzen
Brenda Foster	Tonya Pearson	DelRae Zimmerman
Ryan Hertz	Verla Rostad	
Darwin Langseth	Deb Schultz	

MSU Development Foundation

Board of Directors

Executive Director----- Marv Semrau
President----- Rich Campbell
Vice President----- Langer Gokey
Treasurer ----- Ron Dorn
Investment Advisory Committee ----- Eric Clausen
Special Gifts Committee ----- Vacant
Development Strategies Committee----- Doris Slaaten
MSU President ----- David Fuller

Members

Jon Backes	David Fuller	Doris Slaaten
Mike Berg	Langer Gokey	Myron Thompson
Diane Bryantt	Kathy Aas	Bruce Walker
Rich Campbell	Alan Kurth	Brenda Foster
Eric Clausen	Darwin Langseth	Marv Semrau
Ron Dorn	Maynard Sandberg	

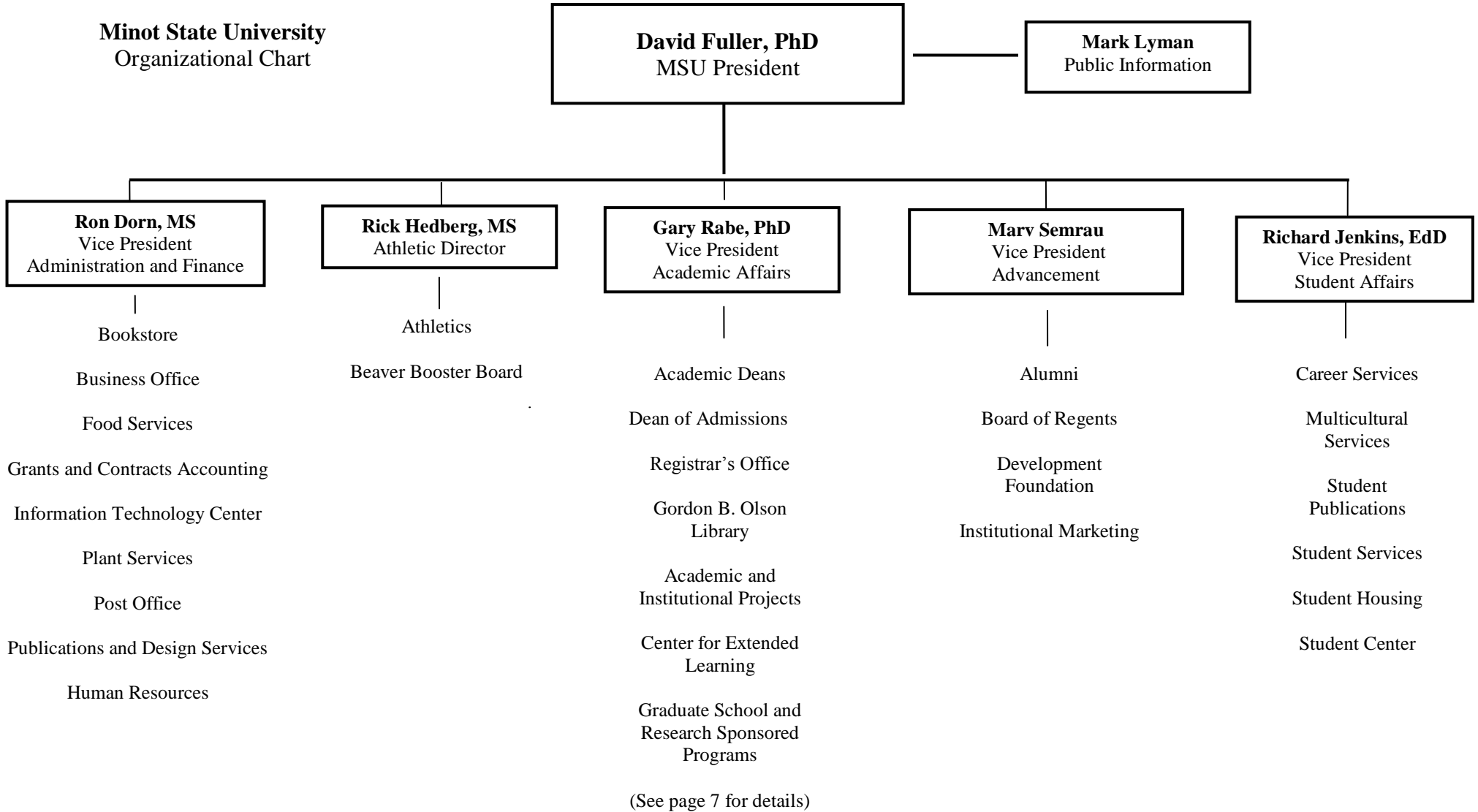
North Dakota University System

Chancellor ----- William G. Goetz
Vice Chancellor for Academic and Student Affairs ----- Michel Hillman
Vice Chancellor for Administrative Affairs ----- Laura Glatt
Director of Finance ----- Cathy McDonald
Academic Affairs Associate and Director of Research ----- Julie Schepp
Director of Financial Aid and Federal Relations Coordinator ----- Peggy Wipf
NDUS Chief Information Officer ----- Randall Thursby
General Counsel/Student Affairs Liason ----- Pat Seaworth
State Approving Agency Dir/Coordinator Multicultural Education Rhonda Schauer
VC for Strategic Planning and Executive Director/CTEC ----- Marsha Krotseng
Director of Articulation and Transfer ----- Philip Parnell
Distance Education Coordinator ----- Robert Larson
Public Affairs Director ----- Debra Anderson
Director of Financial Reporting ----- Darci Trender
FINDET Director ----- Michelle Olsen

North Dakota University System: NDUS Office and Services

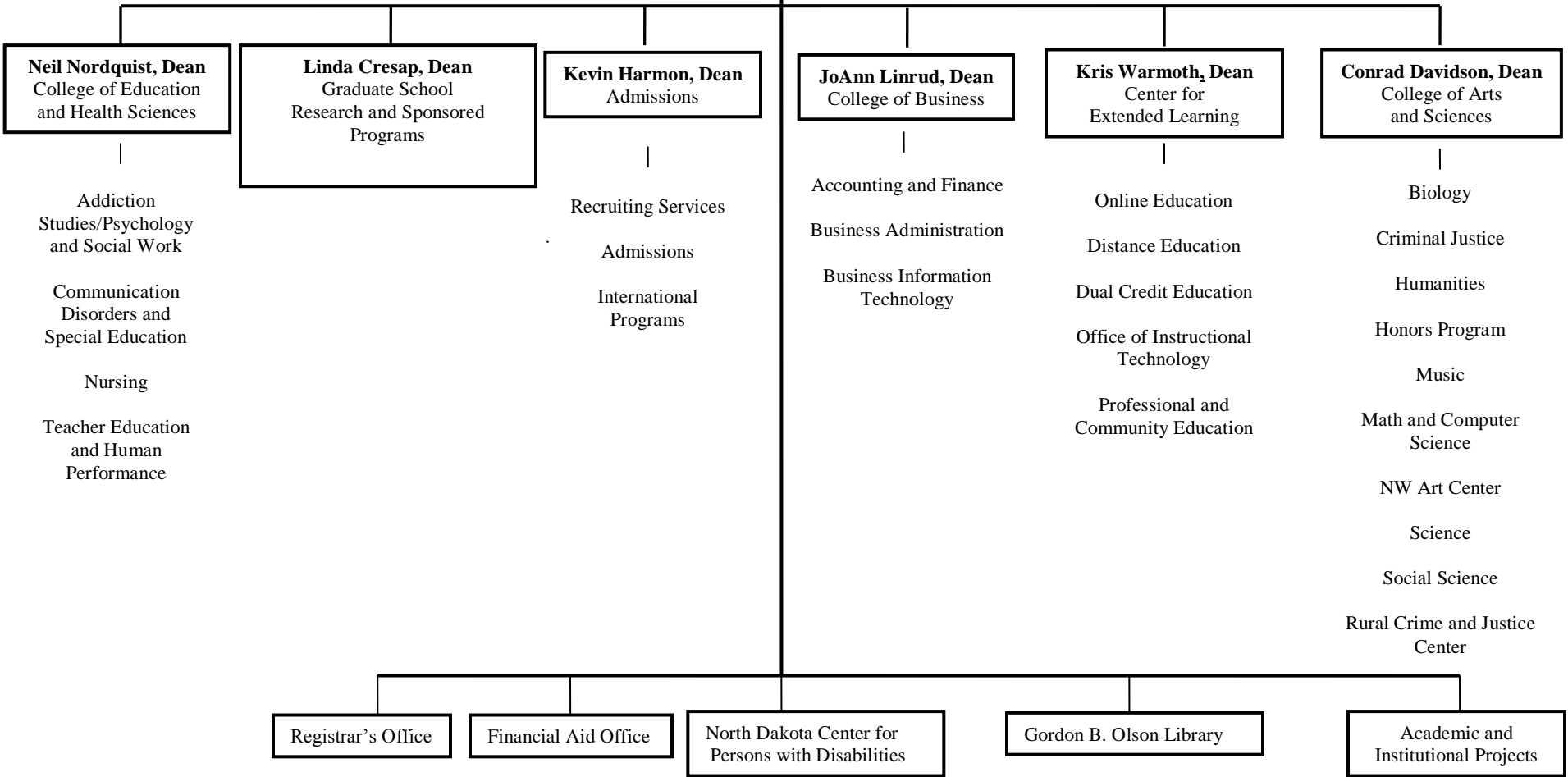
Sourced October 1, 2008

Minot State University
Organizational Chart



Minot State University
Academic Affairs Organizational Chart

Gary Rabe
Vice President
Academic Affairs



Administrative Offices

Academic Affairs

Vice President for Academic Affairs----- Gary Rabe
Executive Director, ND Center for Persons with Disabilities ----- Brent Askvig
Director, Financial Aid ----- Dale Gehring
Interim Director, Library ----- Sarah Henderson
Registrar, Registrar's Office----- Jennifer Sick
Dean of Admissions ----- Kevin Harmon
Coordinator, Academic and Institutional Projects----- Cari Olson
Director, Academic and Institutional Projects----- Rodney Hair

College of Arts and Sciences

Dean ----- Conrad Davidson
Chair, Division of Humanities ----- Linda Olson
Chair, Department of Mathematics and Computer Science ----- Laurie Geller
Chair, Division of Music ----- Kenneth Bowles
Chair, Department of Science ----- Ryan Winburn
Chair, Department of Biology ----- Christopher Keller
Chair, Division of Social Science----- Patricia Lomire
Chair, Department of Criminal Justice ----- William Archambeault
Director, Honors Program ----- Lynne Rumney
Director, Northwest Arts Center ----- Avis Veikley
Executive Director, Rural Crime and Justice Center----- Rodney Hair

College of Business

Dean ----- Joann Linrud
Chair, Department of Accounting and Finance ----- Patricia Fedje
Chair, Department of Business Information Technology ----- Thomas Seymour
Chair, Business Administration ----- Gary Ross

College of Education and Health Sciences

Dean ----- Neil Nordquist
Chair, Department of Communication Disorders and Special Education -- Thomas Linares
Chair, Department of Teacher Education and Human Performance ----- Deb Jensen
Coordinator, Master of Education Program ----- Deb Jensen
Coordinator, Elementary Education Program----- Lisa Borden-King
Coordinator, Physical Education and Human Performance Program----- David Rochholz
Coordinator, Teacher Education Core----- Rebecca Barcomb
Director, Advisement and Field Placement ----- Elaine Larson
Chair, Department of Addiction Studies/Psych/Social Work----- Donald Burke
Director, School Psychology ----- Casey Coleman
Director, Addiction Studies----- Vicki Michels
Director, Social Work ----- Charlene Bruley
Chair, Department of Nursing----- Kelly Schmidt
Chair, Department of Special Education-----Lori Garnes

Administrative Offices

Graduate School and Research and Sponsored Programs

Dean.....Linda Cresap
Assistant to the Dean of the Graduate School.....Margaret Coxwell

Student Affairs

VP for Student Affair ----- Richard Jenkins
Director, Multicultural Support Services ----- Wylie Hammond
Director, Student Health Center----- Caren Barnett
Director, Student Life----- Lisa Eriksmoen
Director, Student Center----- Leon Perzinski
Director, Career Services----- Lynda Bertsch
Coordinator, Campus Activities ----- Ann Rivera
Coordinator, Disability Services ----- Evelyn Klimpel
Student Publications ----- Frank McCahill
Nurse Practitioner ----- Heidi Peterson
Counselor, Student Development----- Nancy Mickelson
Coordinator, Fitness Center----- Paul Brekke
Coordinator, Residence Life----- Amber O'Brien

Administration and Finance

Vice President for Administration and Finance ----- Ron Dorn
Controller ----- Jonelle Watson
Director Facilities----- Roger Kluck
Director, Publications and Design Services----- Sandy Nordstrom
Director, Student Center----- Leon Perzinski
Director, Information Technology Center----- Cathy Horvath
Manager, Bookstore----- Sandra Foley

University Athletics

Director, Athletics ----- Rick Hedberg
Head Women's Basketball----- Sheila Green Gerding
Head Men's Basketball ----- Steve Grabowski
Head Volleyball----- Johnna Lewis
Head Cross Country----- Stu Melby
Head Football ----- Paul Rudolph
Head Softball ----- Bill Triplett
Head Baseball ----- Brock Wepler

***Minot State
University***

***Student
Information***

**North Dakota University System
Fall Enrollment by Headcount 1997-2008**

Institution	1997	1998	1999	2000	2001	2002	2003	2004	2005	2006	2007¹	2008
Bismarck State College	2,481	2,594	2,743	2,744	3,044	3,168	3,430	3,546	3,370	3,477	3,591	3,788
Dickinson State University	1,736	1,800	1,867	2,012	2,101	2,326	2,461	2,479	2,516	2,572	2,670	2,730
Lake Region State College	738	826	805	902	1,308	1,340	1,473	1,464	1,471	1,508	1,520	1,657
Mayville State University	705	740	851	776	755	746	817	897	912	832	769	789
Minot State Bottineau	421	447	508	451	526	609	620	602	523	605	637	655
Minot State University	3,294	3,156	3,155	3,081	3,515	3,625	3,825	3,851	3,798	3,712	3,424	3,432
ND State College of Science	2,542	2,469	2,345	2,425	2,292	2,439	2,468	2,481	1,852	2,490	2,417	2,545
North Dakota State University	9,408	9,536	9,638	9,894	10,538	11,146	11,623	12,026	12,099	12,258	12,527	13,229
University of North Dakota	10,363	10,369	10,590	11,031	11,764	12,423	13,034	13,187	12,954	12,834	12,559	12,748
Valley City State University	1,054	1,081	1,077	1,090	1,005	1,022	998	944	1,035	1,037	982	1,019
Williston State College	788	674	714	687	748	770	871	937	947	912	731	850
Total	33,350	33,692	34,293	35,093	37,596	39,614	41,620	42,414	42,082	42,237	41,827	43,442

Source: North Dakota University System Office: 2008 Fall Enrollment Report <http://www.ndus.edu/uploads/document-library/1785/FALL-2008-ENROLLMENT-FOR-NEWS--RELEASE.PDF>

Data Source: North Dakota University System. Headcount is the total number of students enrolled regardless of the number of credit hours. NDUS reports the headcount as the number of students enrolled on the 4th week of classes in the term.

¹ "Enrollment at some institutions includes students who were registered, but had not made payment or been granted an extension based on documented good cause as of the census date. This includes 24 students at NDSU, 40 students at UND, 71 students at NDSCS and 239 students at LRSC for a total of 374 students." (Creating a University System for the 21st Century, 2007 Fall Enrollments, November 2007, p. 1)

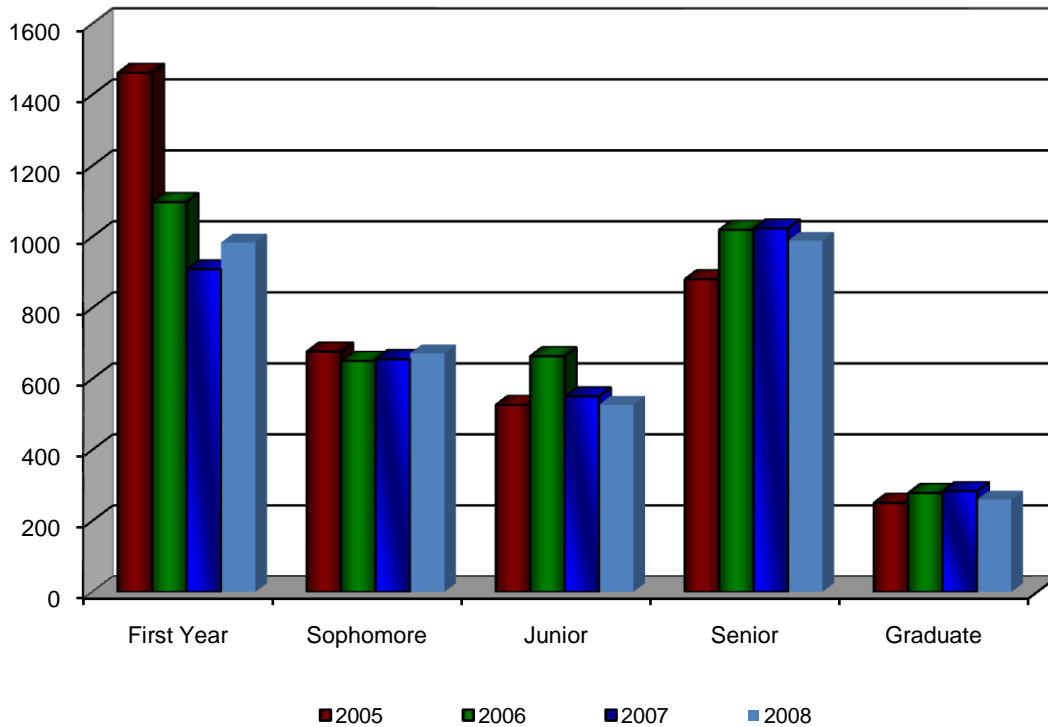
**Enrollment by Classification and Gender Fall 2008
Headcount 2005, 2006, 2007, 2008**

	Male				Female				Total			
	2005	2006	2007	2008	2005	2006	2007	2008	2005	2006	2007	2008
Undergraduate												
First Year	571	478	388	415	891	618	521	569	1462	1098*	909	984
Sophomore	267	227	239	276	410	424	417	396	677	651	656	672
Junior	193	252	181	175	334	412	370	352	527	664	551	527
Senior	297	344	345	366	584	676	679	623	881	1020	1024	989
2005 data reflects a change in university software to PeopleSoft. It does not distinguish UG Special. Students in this classification are now calculated in the senior total.												
Total Undergraduate	1328	1301	1153	1232	2219	2130	1987	1940	3547	3433*	3140	3172
Graduate	55	57	57	54	196	222	227	206	251	279	284	260
MSU Totals	1383	1358	1210	1286	2415	2352	2214	2146	3798	3712*	3424	3432

Registrar's Office: Enrollment Report ID# NDUH2SRA pg 5 (4th Week Data)

* Totals include two freshmen who did not report gender. Data from 2005 was initial year of PeopleSoft data.

Total Students by Academic Status 2005-2008



Registrar's Office: Enrollment Report ID# NDUH2SRA pg 5 (4th Week Data)

Minot State University Enrollment Highlights

Fall 2008 to Fall 2007 Data

	Head Count			Full-time			Part Time			Total Scheduled Cr Hr		
	2008	2007	Change	2008	2007	Change	2008	2007	Change	2008	2007	Change
Freshmen												
Male	415	388	27	210	238	-28	205	150	55	3985	4217	-232
Female	569	521	48	350	304	46	219	217	2	6221.5	5547.5	674
Total	984	909	74	560	542	18	424	367	57	10206.5	9764.5	442
Sophomore												
Male	276	239	37	235	202	33	41	37	4	3741	3179	562
Female	396	417	-21	322	332	-10	74	85	-11	5324.5	5590.5	-266
Total	672	656	16	557	534	23	115	122	-7	9065.5	8769.5	296
Junior												
Male	175	181	6	138	144	-6	37	37	0	2294	2430	-136
Female	352	370	-18	270	281	-11	82	89	-7	4616.5	4809	-192.5
Total	527	551	-24	408	425	-17	119	126	-7	6910.5	7239	-328.5
Senior												
Male	366	345	21	254	239	15	112	106	6	4431	4171.5	259.5
Female	623	679	-56	459	487	-28	164	192	-28	7669.5	8219.5	-550
Total	989	1024	-35	713	726	-13	276	298	-22	12100.5	12391	-290.5
Total Undergraduates												
Male	1232	1153	79	837	823	14	395	330	65	14451	13997.5	453.5
Female	1940	1987	47	1401	1404	-3	539	583	-44	23832	24166.5	-334.5
Total	3172	3140	32	2238	2227	11	934	913	21	38283	38164	119
Total Graduates												
Male	54	57	-3	23	24	-1	31	33	-2	403	452	-49
Female	206	227	-21	89	107	-18	117	120	-3	1616	1771	-155
Total	260	284	-24	112	131	-19	148	153	-5	2019	2223	-204
Total Minot State University												
Male	1286	1210	76	860	847	13	426	363	63	14854	13997.5	856.5
Female	2146	2214	-68	1490	1511	-21	656	703	-47	25448	24166.5	1281.5
Total	3432	3424	8	2350	2358	-8	1082	1066	16	40302	40387	-85

Registrar's Office: Enrollment Report ID# NDUH2SRA pg 5 (4th Week Data)

* FTE/Total refers to Full-time Equivalent of Total Credit Hour Production (Total undergraduate credit hours divided by 16 or Total graduate credit hours divided by 12). "Total credit hours" is the number of credit hours the full-time and part-time students enrolled in. <http://www.csgnetwork.com/percentchangeCalc.html> FTE Numbers were calculated by dividing total credit hours from first table by 15 for undergraduates and by 12 for graduates. Prior to 2006, the calculation was 16 for undergraduates and 9 graduates.

Minot State University
Student Enrollment Highlights: FTE/Total*
1997-2005

	1997	1998	1999	2000	2001	2002	2003	2004	2005
Undergraduates	2633	2471	2466	2366	2614	2669	2697	2683	2679
Graduates	94	126	122	125	125	120	142	161	205
Total	2727	2587	2588	2491	2739	2789	2839	2844	2884
Undergraduates									
Male	1011	951	958	893	976	981	1012	1006	999
Female	1622	1520	1508	1473	1638	1688	1685	1677	1680
Graduates									
Male	19	16	16	22	30	27	27	27	50
Female	75	110	106	103	95	93	115	134	155

1997-2005: FTE calculation is based upon 16 credit hours for full-time undergraduate and 9 credit hours per graduate student. Note the 2005 Fact Book indicates graduate FTE as being 12 credit/term; however, these prior calculations were made on 9 credit hours.

In 2006, the FTE calculation was changed. The calculations are now based upon 15 credit hours for full-time undergraduate students and 12 credit hours for graduate students.

2006-2008	2006 Fall Semester			2007 Fall Semester			2008 Fall Semester		
	06 FT + FTE of Part Time	Total Scheduled Credit Hours	FTE of Total Credit Hours	07 FT + FTE of Part Time	Total Scheduled Credit Hours	FTE of Total Credit Hours	08 FT + FTE of Part Time	Total Scheduled Credit Hours	FTE of Total Credit Hours
Freshmen	788.54	11,561.00	770.75	664.26	9,764.5	650.96	695.61	10,206.50	680.43
Sophomore	583.14	8,603.50	573.57	588.19	8,769.5	584.62	607.53	9,065.50	604.37
Junior	594.21	8,780.50	585.37	485.73	7,239	482.6	460.40	6,910.50	460.70
Senior	851.13	12,470.00	831.33	851.06	12,391	826.07	827.04	12,100.50	806.71
Total Undergrad.	2,817.02	41,415.00	2,761.02	2,589.24	38,164	2,544.25	2590.58	38,283.00	25,52.21
Graduate									
Graduate	168.75	2,003.00	166.92	187.74	2,223	185.24	167.09	2,019.00	168.25
Institutional Total FTE	2,985.77	43,418.00	2,927.91	2,776.98	40,387.00	2,729.49	2,757.67	40,302.00	2,720.46

Source: Report NDUH2SRA- Headcounts and FTE Enrollments- Official Enrollment Report, received from Registrar's Office September 2008.

**MSU Fall Enrollment – Headcount
1997 through 2008**

	1997	1998	1999	2000	2001	2002	2003	2004	2005	2006	2007	2008	07-08 %Chg
Undergraduates	3120	2979	2982	2907	3326	3425	3593	3576	3547	3433	3140	3172	1%
Graduates	174	177	173	174	189	200	231	275	251	279	284	260	-8.4%
Total Enrollment	3294	3156	3155	3081	3515	3625	3825	3851	3798	3712*	3424	3432	.29%
Undergraduate Students													
Male Full-time	1041	953	962	890	932	946	944	929	927	928	823	837	1.7%
Female Full-time	1601	1485	1450	1408	1564	1592	1568	1537	1546	1510	1404	1401	-0.2%
Male Part-Time	151	202	177	197	323	307	427	425	401	373	330	395	19.6%
Female Part Time	327	339	393	412	507	580	654	685	673	620	583	539	-7.5%
Unknown	0	0	0	0	0	0	0	0	0	2	0	0	0
Graduate Students													
Male Full-time	9	5	6	10	8	5	6	5	28	21	24	23	-4.1%
Female Full-time	39	50	48	52	49	42	52	50	84	80	107	89	-16.8%
Male Part Time	24	22	21	28	42	45	48	44	27	36	33	31	-6.0%
Female Part Time	102	100	98	84	90	108	125	176	112	142	120	117	-2.5%

Data Source: NDUHSRA- Headcounts and FTE Enrollments Pg. 5 Institution Totals.-Data provided by Registrar's Office 4th Week Official Enrollment Data – September 23rd, 2008.
Headcount indicates all students enrolled regardless of the number of credit hours for which they are enrolled (NDUS) * Includes 2 classified as unknown (1 full-time and 1 part time)
Percentage Change= Subtract old value from the new value, then divide by the old value, multiply by 100 for percentage. New Value-Old Value/ Old Value * 100 = Percentage Change

**MSU Headcount (HC) and Full-time Equivalent (FTE)
1997-2008**

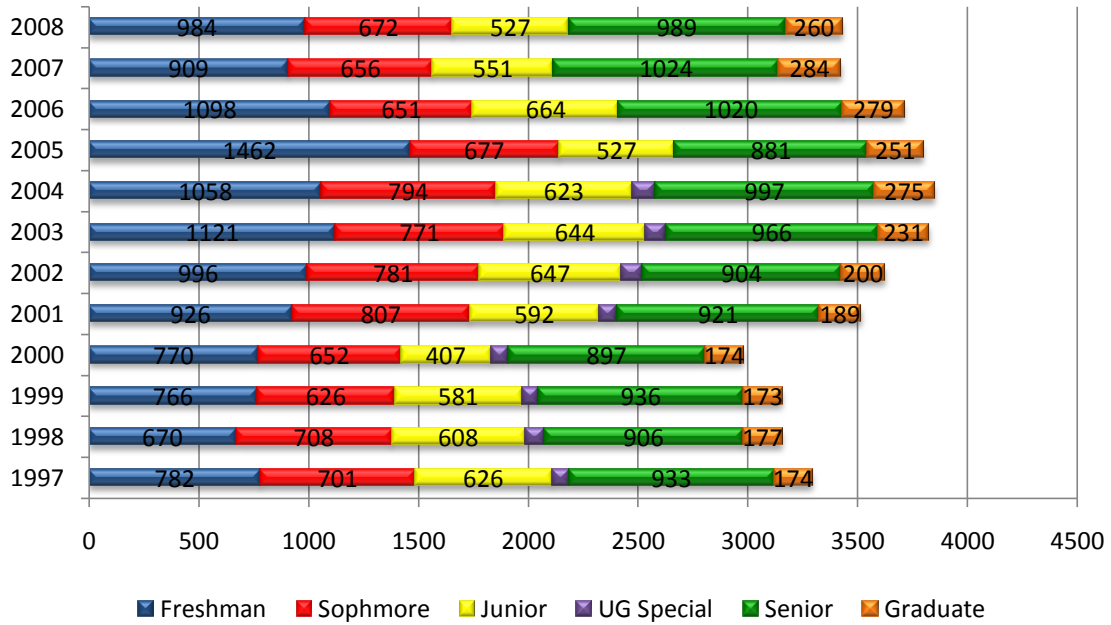
Graduate and Undergraduate Combined

Year	Headcount	% Change	FTE*	% Change
1997	3294	----	2727	----
1998	3156	-4.0	2597	-4.8
1999	3155	0.0	2588	-0.3
2000	3081	-2.3	2491	-3.7
2001	3515	14.1	2739	10.0
2002	3625	3.1	2789	1.8
2003	3825	5.5	2839	1.8
2004	3851	0.7	2844	0.2
2005	3798	-0.8	2884	1.4
New FTE formula initiated in 2006				
2006	3712	-2.3	2928	n/a
2007	3424	-7.8	2730	-6.8%
2008	3432	.23	2720.46	-0.3%

Data Source: NDUHSRA- Headcounts and FTE Enrollments Pg. 5 Institution Totals.-Data provided by Registrar's Office 4th Week Official Enrollment Data – September 23rd, 2008.
 Headcount indicates all students enrolled regardless of the number of credit hours for which they are enrolled (NDUS)
 Percentage Change= Subtract old value from the new value, then divide by the old value, multiply by 100 for percentage. New Value-Old Value/ Old Value * 100 = Percentage Change

Headcount Enrollment by Level 1997-2008

Headcounts include all students enrolled (FT and PT)



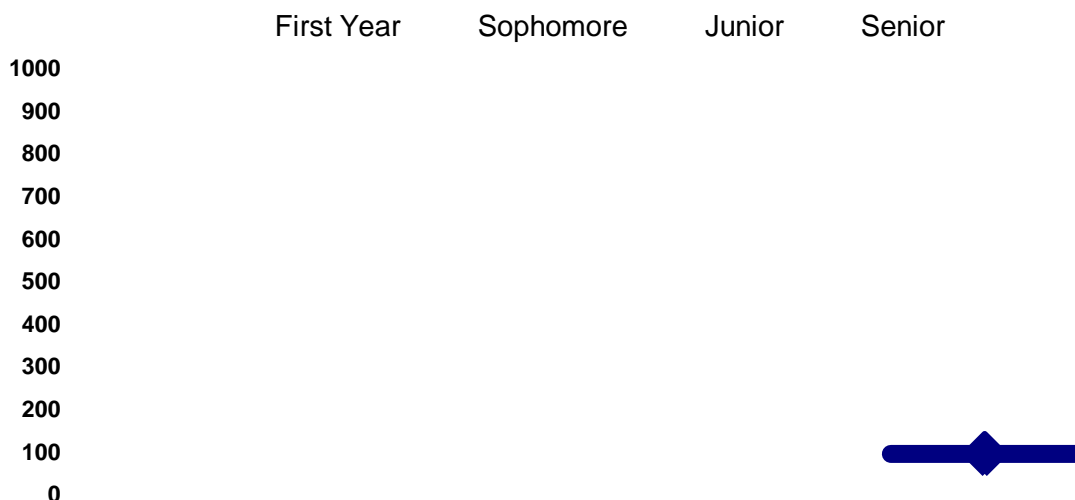
MSU Full-time Undergraduates by Status 1997-2008

	1997	1998	1999	2000	2001	2002	2003	2004	2005	2006	2007	2008
First Year	658	547	614	620	663	680	647	617	862	654	542	560
Male	272	236	249	263	261	287	271	251	339	283	238	210
Female	386	311	365	357	402	393	376	366	523	371	304	350
Sophomore	612	592	523	535	563	639	598	600	545	521	534	557
Male	234	233	217	211	256	243	215	249	223	195	202	235
Female	378	359	306	324	307	396	383	351	322	326	332	322
Junior	541	501	490	407	471	513	513	476	415	529	425	408
Male	221	200	180	149	159	188	193	161	154	206	144	138
Female	320	301	310	258	312	325	320	315	261	323	281	270
Senior	783	753	747	697	705	662	721	730	651	734	726	713
Male	295	269	303	253	245	217	255	255	211	244	239	254
Female	488	484	444	444	460	445	466	475	440	490	487	459
UG Special	48	45	38	39	31	44	34	43	0	0	0	0
Male	19	15	13	14	11	11	10	13	Status not included in PeopleSoft.			
Female	29	30	25	25	20	33	24	30				

Source: NDUHSRA- Headcounts and FTE Enrollments Pg. 5 Institution Totals- Registrar's Office 4th Week Official Enrollment Reports.

Undergraduate Special (UG Special) refers to an individual who has previously earned a bachelor's degree and is taking additional undergraduate coursework. PeopleSoft includes these students in Senior Status.

Total Full-Time Students



Note: Undergrad special category was added to the senior category for this graphic for 1997 to 2004.

MSU Part-Time Undergraduates by Status 1997-2008

	1997	1998	1999	2000	2001	2002	2003	2004	2005	2006	2007	2008
First Year	124	123	152	150	263	316	474	441	600	442	367	424
Male	36	44	49	60	122	119	226	198	232	195	150	205
Female	88	79	103	90	141	197	248	243	368	247	217	219
Sophomores	89	116	103	117	181	142	173	194	132	130	122	115
Male	36	42	34	31	73	55	65	68	44	32	37	41
Female	53	74	69	86	108	87	108	126	88	98	85	74
Juniors	85	107	91	101	121	134	131	147	112	135	126	119
Male	26	34	22	26	37	36	46	47	39	46	37	37
Female	59	73	69	75	84	98	85	100	73	89	89	82
Senior	150	153	189	200	216	242	245	267	230	286	298	276
Male	44	68	63	66	73	78	73	95	86	100	106	112
Female	106	85	126	134	143	164	172	172	144	186	192	164
Undergrad. Special	30	42	35	41	49	53	58	61	See note.			
Male	9	14	9	14	18	19	17	17				
Female	21	28	26	27	31	34	41	44				

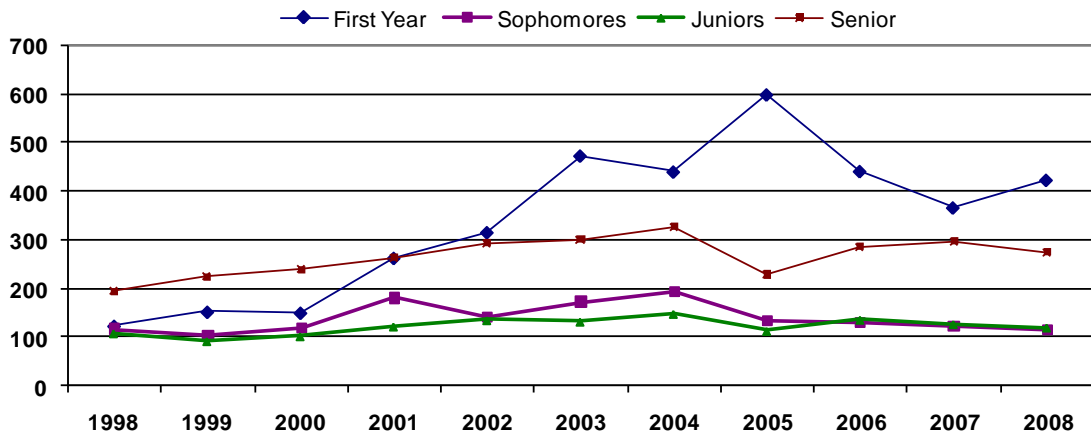
Source: NDUHSRA- Headcounts and FTE Enrollments Pg. 5 Institution Totals- Registrar's Office 4th Week Official Enrollment Reports.

Note: Undergraduate Special (UG Special) refers to an individual who has previously earned a bachelor's degree and is taking additional undergraduate coursework. ***Note:** PeopleSoft software initiated in 2005.

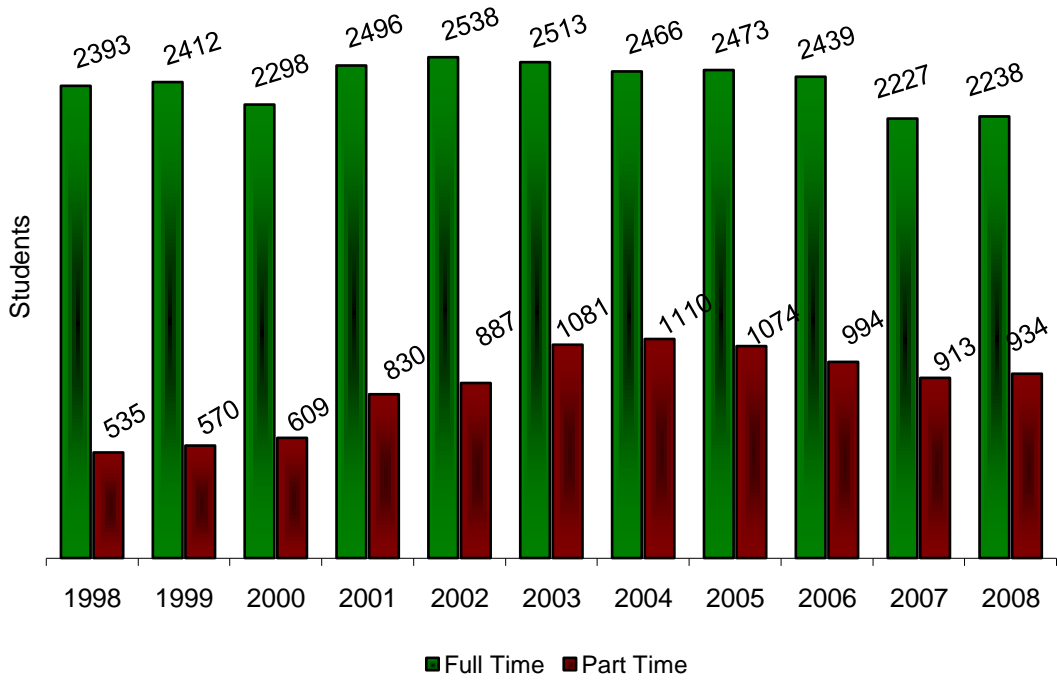
Undergraduate Special category no longer exists. These individuals are now included as Seniors. To compare data for the Seniors in 2005, the 2004 number used is the Senior + UG Special.

Note: Undergraduate Special numbers were added to Senior Status for this chart.

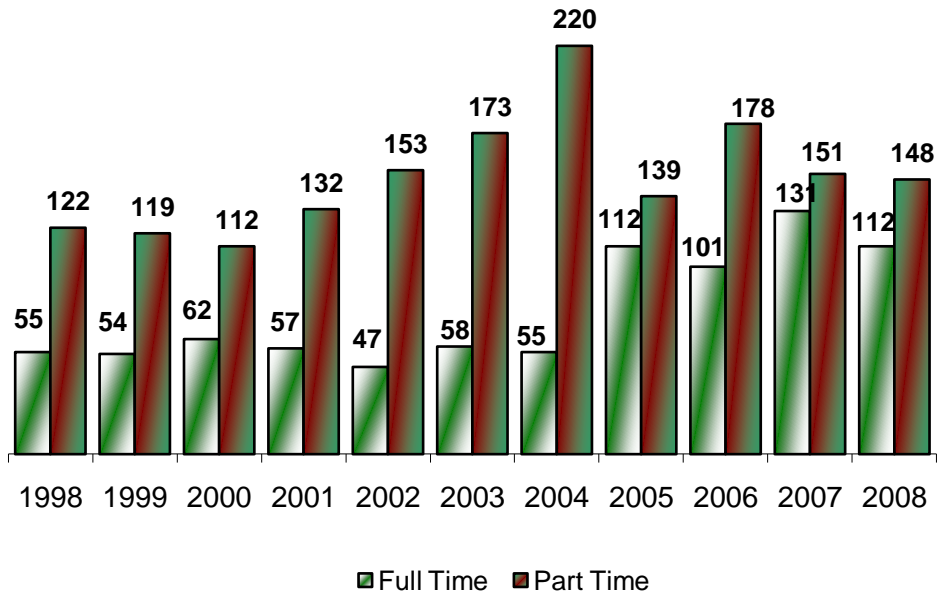
Total Part Time Students



MSU Enrollment 1997 - 2008
Total Full-time/Part Time Status
Undergraduate Students

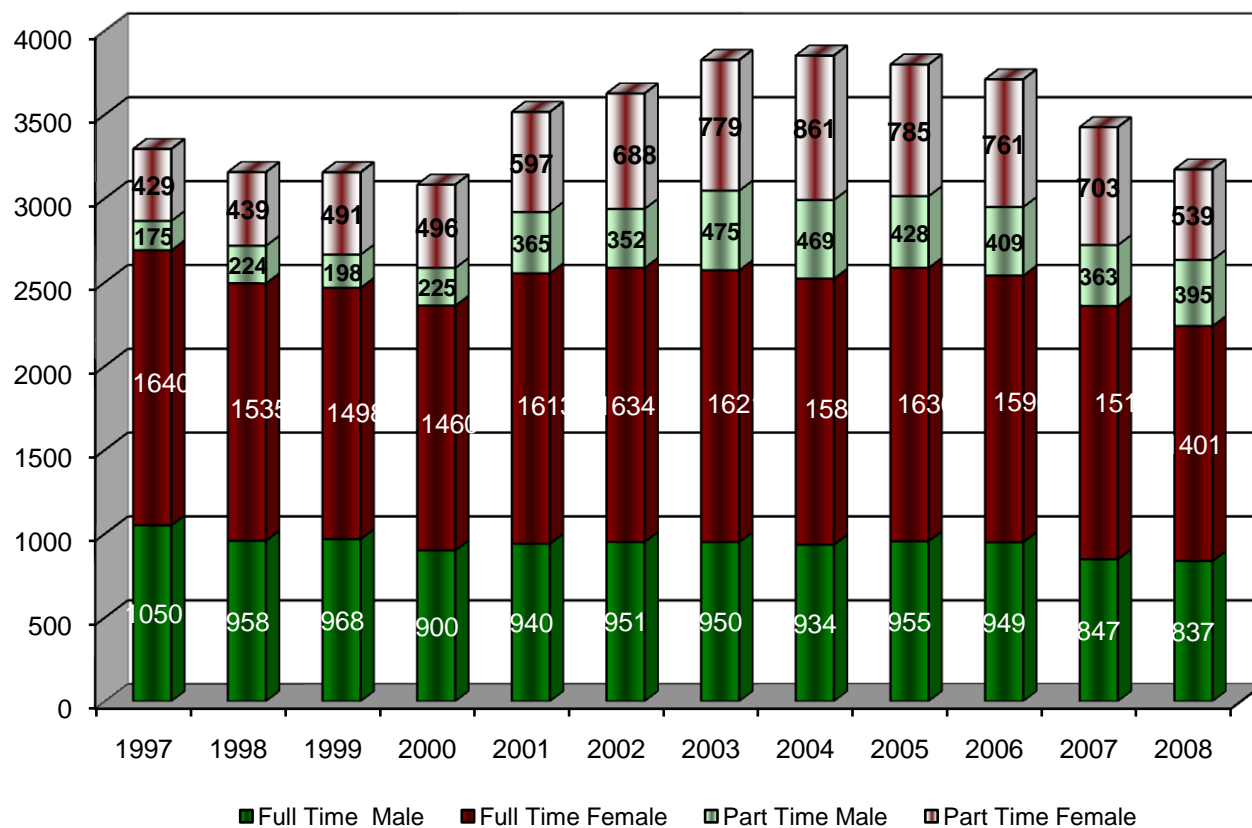


Graduate Students



Source: NDUHSRA- Headcounts and FTE Enrollments Pg. 5 Institution Totals- Registrar's Office 4th Week Official Enrollment Reports.

**MSU Full-Time Enrollments by Gender and Enrollment Status
Combined Undergraduate and Graduate 1997-2008**



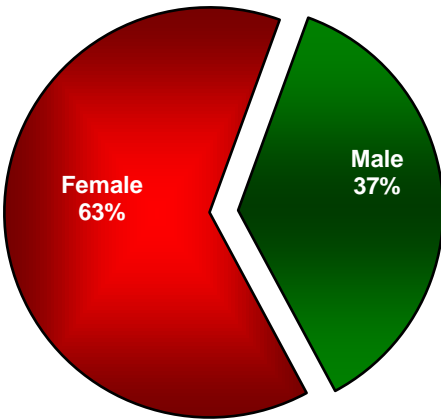
Enrollment by Gender

2007-08

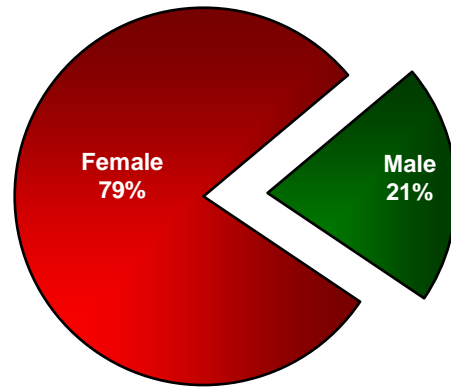
Full-time - Enrolled in 12-24 Semester Hours

Part-time - Enrolled in 1-11 Semester Hours

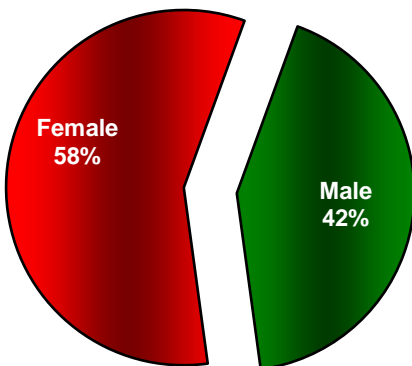
Full-time Undergraduate Enrollment



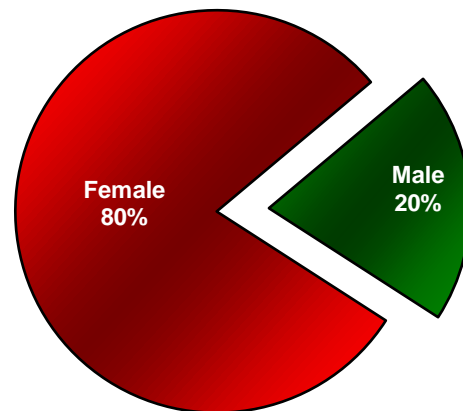
Full-time Graduate Enrollment



Part-time Undergraduates



Part-time Graduates



MSU Student Totals by Ethnicity - 1997-2008

(graduate and undergraduate combined)

	1997	1998	1999	2000	2001	2002	2003	2004	2005	2006	2007	2008	07-08 % Chg
Caucasian	2623	2595	2638	2578	2970	3065	3209	3202	3214	2974	2737	2511	-8.2%
Male	953	968	966	931	1096	1075	1144	1129	1153	1077	973	974	.10%
Female	1670	1627	1672	1647	1874	1990	2065	2072	2061	1895	1764	1537	-12.8%
African American	46	63	60	58	101	99	116	114	83	93	90	106	17.7%
Male	28	39	36	34	56	52	73	66	50	58	50	63	26.0%
Female	18	24	24	24	45	47	43	48	33	35	40	43	7.5%
American Indian	131	140	148	150	148	153	137	117	122	142	127	129	1.5%
Male	57	54	65	61	46	54	54	42	39	36	34	37	8.82%
Female	74	86	83	89	102	99	83	75	83	106	93	92	-1.07%
Asian/Pacific Islander	11	16	21	17	35	37	47	43	38	40	35	30	-14.2%
Male	8	8	8	4	17	18	23	23	23	15	12	11	-8.3%
Female	3	8	13	13	18	19	20	24	15	25	23	19	-17.3%
Hispanic	37	27	31	38	47	59	74	86	77	91	76	83	9.2%
Male	15	14	15	18	20	30	37	43	38	41	26	36	38.4%
Female	22	13	16	20	27	29	37	43	39	50	50	47	-6%
Non Resident Alien	386	309	257	240	214	212	225	245	259	299	290	275	-5.17%
Male	122	94	76	77	70	74	80	79	173	101	86	93	8.13%
Female	264	215	181	163	144	138	145	166	86	198	204	182	-10.7%
Not Reported	-	-	-	-	-	-	-	-	-	75	69	38	-44.9%

NDU02SRK Compliance Report-Enrollment by Ethnicity Pg 4 Campus Totals – Registrar’s Office 4th Week Official Enrollment Reports September 23rd, 2008.

MSU Students by Residency 1997-2008

	1997	1998	1999	2000	2001	2002	2003	2004	2005	2006	2007	2008	% Chg 07-08
Total North Dakota	2369	2319	2383	2334	2544	2630	2661	2650	3165	2972*	2777	2779	.07%
Male	861	866	888	832	878	895	895	866	1126	1053	967	1020	5.4%
Female	1508	1453	1495	1502	1666	1735	1766	1784	2039	1917	1810	1759	-2.81%
Total ND Military	269	267	236	227	438	446	609	592	* Combined with Total ND with conversion. See note below.				
Male	106	107	72	77	206	181	288	277					
Female	163	160	164	150	232	265	321	315					
Total Non-Resident	656	570	536	520	533	549	555	609	633	740	647	653	.92%
Male	258	209	206	216	221	227	243	260	257	305	243	266	9.4%
Female	398	361	330	304	312	322	312	349	376	435	404	387	-.04%
Canadian Residents	298	299	237	210	177	178	190	219	225	255	234	280	19.6%
British Columbia	2	3	4	2	3	5	7	8	7	14	5	4	-20%
Alberta	16	20	14	9	10	9	14	15	3	12	12	23	91.6%
Saskatchewan	207	207	162	148	122	114	117	151	173	176	163	166	1.8%
Manitoba	73	67	55	50	42	48	48	41	37	44	43	58	34.8%
Ontario	0	2	1	1	0	2	3	3	4	7	8	8	0%
New Brunswick	0	0	1	0	0	0	1	1	1	0	0	0	0%
Quebec	0	0	0	0	0	0	0	0	0	2	3	2	-33.3%

Source: NDU02SRD Student Data Statistics- Enrollment Residency- 4th Week Official Enrollment Reports provided by Registrar's Office – September 23rd 2008.

Note: PeopleSoft does not separate ND Military from ND residents. Total nonresident includes all enrollments minus ND and military.

* Includes two students who did not identify gender. The "Total Non-Resident" category contains all students that are not residents of ND, including: out-of-state and international (including Canadian).

**MSU New Students, Transfers, and
Older than Average Students (OTAS)
1997-2008**

	1997	1998	1999	2000	2001	2002	2003	2004	2005	2006	2007	2008	07-08 %Chg
Total New Freshman	470	418	525	511	506	552	543	549	471	483	445	437	-1.79%
Male	178	164	210	219	203	231	211	215	206	205	197	158	-19.7%
Female	292	254	315	292	303	321	332	334	265	278	248	279	12.5%
Total Transfers	369	347	336	328	419	429	449	456	382	279	278	270	-2.87
Male	176	144	145	138	170	172	203	188	138	100	85	91	7.0%
Female	193	203	191	190	249	257	246	268	244	179	193	179	-7.2%
Total OTAS	898	863	818	776	1026	1058	1126	1152	1142	1089	1106	1138	2.8%
Male	318	326	294	271	361	358	400	418	412	406	396	412	4.04%
Female	580	537	524	505	665	700	726	734	730	683	710	726	2.2%
New Grad Students										79	88	65	26.1%
Male										16	20	18	10.0%
Female										63	68	47	30.8%

Source: Report NDU02SRD- Student Data Statistics- Enrollment- & NDUH2SRN Enrollment Summary by Age & NDU02SRK- Enrollment 1st Time Graduate-4th Week Official Enrollment Reports provided by the Registrar's Office- September 23rd,2008.

Older Than Average Student (OTAS): undergraduate 25 years and older.

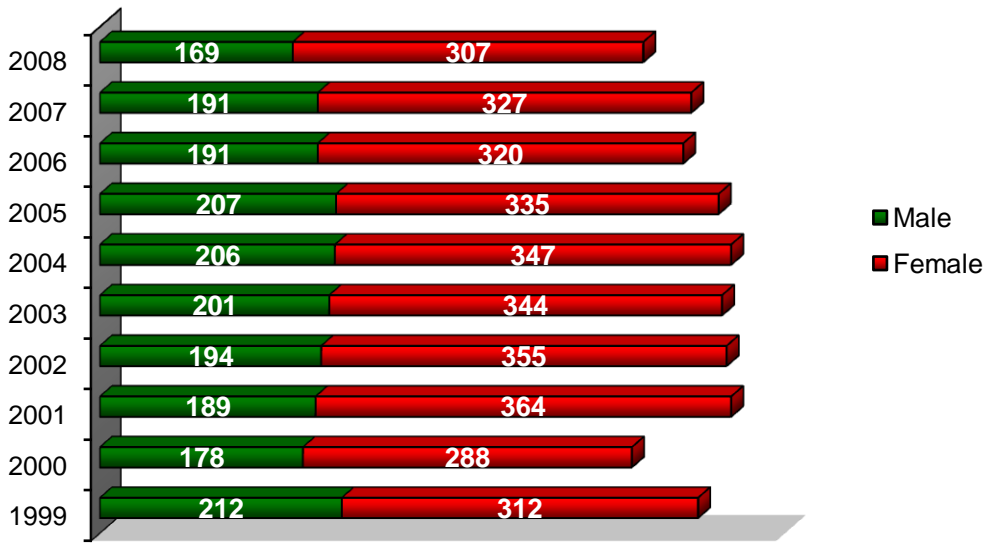
**Note: Data in Fact Books 2001-2004 previously included only the data for full-time OTA undergraduate students. The numbers in this chart now include both full and part-time students for all years presented. Breakdowns of full and part-time students are presented graphically, by year, on the next page.

MSU Older Than Average Student (OTAS)

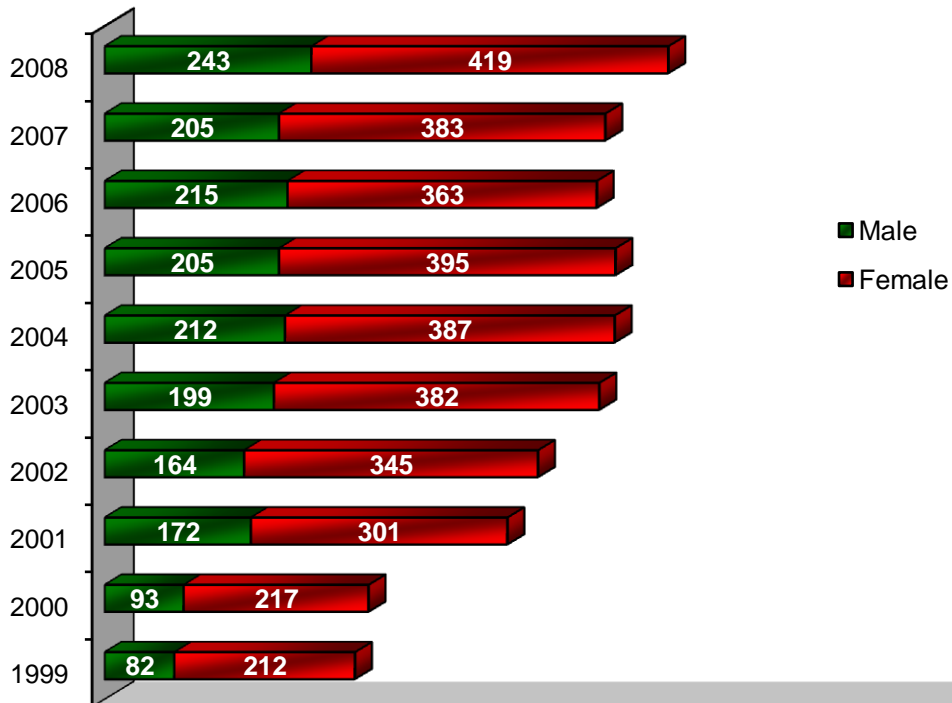
Enrollment: 1999 – 2008

(OTA = student age 25 or greater)
Graduate and Undergraduate Combined

Full-Time Undergraduate OTAS

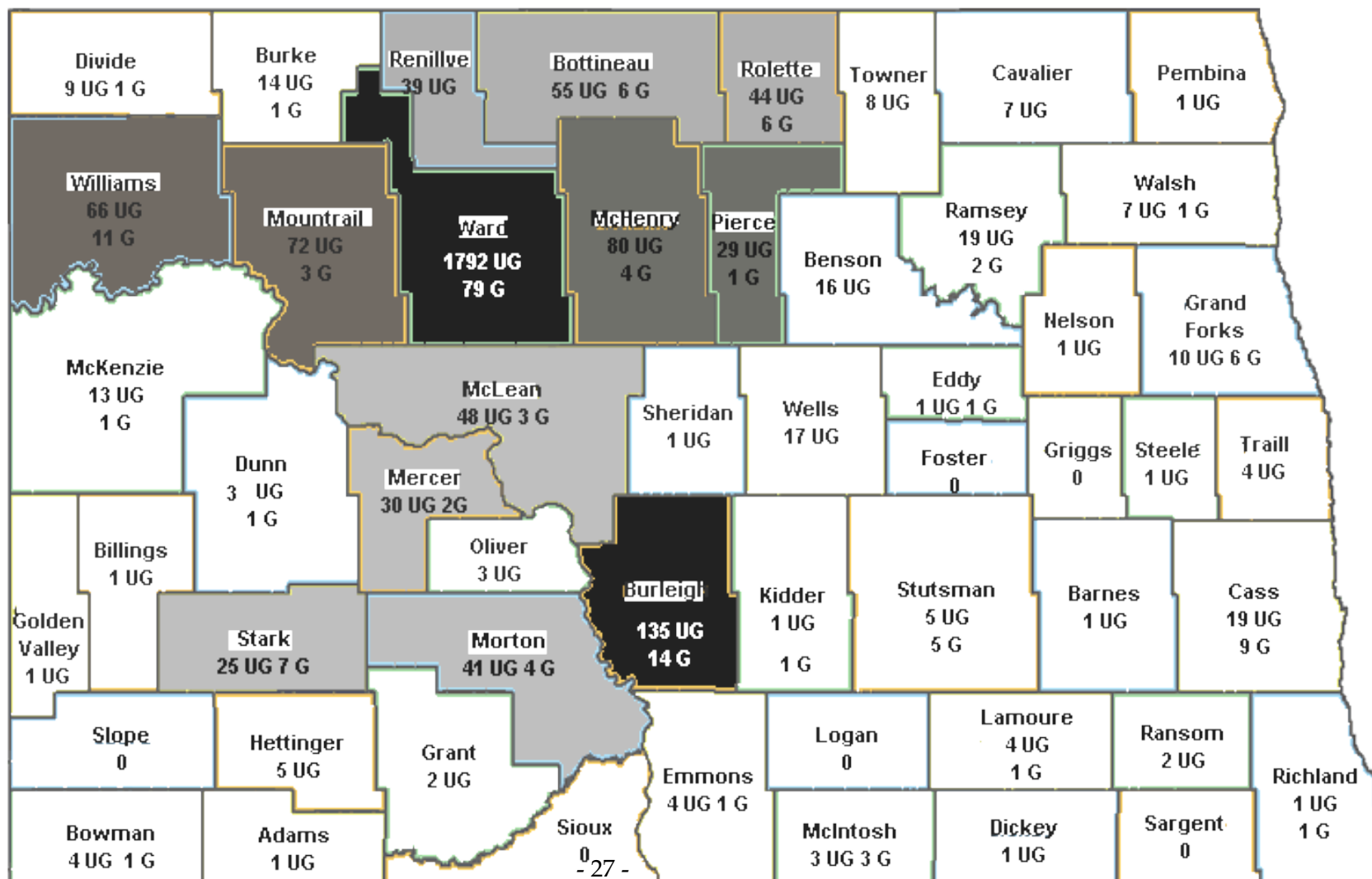


Source: NDUH2SRN Enrollment Summary by Age- 4th Week Official Enrollment Report Provided by the Registrar's Office.



**Enrolled Undergraduate and Graduate Students
By North Dakota County: Fall 2008
N=2,649 UG and N= 176 G**

Data Source: 4th Week Official Enrollment Report : NDUH2SRG



**North Dakota Graduate and Undergraduate
Students by North Dakota County: 1997-2008**

	1997	1998	1999	2000	2001	2002	2003	2004	2005	2006	2007	2008
Adams	4	4	4	2	4	9	6	2	4	2	2	1
Barnes	0	0	0	0	0	0	0	0	0	0	0	1
Benson	6	9	13	11	12	11	16	13	16	18	17	16
Billings	0	0	0	0	0	0	0	0	0	0	0	1
Bottineau	96	112	102	95	95	87	94	87	88	71	76	61
Bowman	0	0	0	0	0	0	0	0	0	0	0	5
Burke	23	28	23	19	24	20	27	31	32	28	24	15
Burleigh	52	74	140	126	132	139	162	177	182	181	167	149
Cass	7	5	6	5	7	30	11	21	41	38	29	28
Cavalier	6	11	14	18	16	15	13	17	13	11	9	7
Dickey	0	0	0	0	0	0	0	0	0	0	0	1
Divide	15	18	15	18	8	14	10	14	15	8	12	10
Dunn	2	4	2	6	7	8	10	9	12	9	12	4
Eddy	0	0	0	0	0	0	0	0	0	0	0	2
Emmons	0	0	0	0	0	0	0	0	0	0	0	5
Golden Valley	0	0	0	0	0	0	0	0	0	0	0	1
Grand Forks	7	12	15	17	11	10	15	20	23	21	23	16
Grant	0	0	0	0	0	0	0	0	0	0	0	2
Hettinger	1	2	4	5	2	5	7	7	10	9	6	5
Kidder	0	0	0	0	0	0	0	0	0	0	0	4
La Moure	0	0	0	0	0	0	0	0	0	0	0	5
McHenry	75	109	100	105	122	110	112	124	105	102	91	84
McIntosh	0	0	0	0	0	0	0	0	0	0	0	6
McKenzie	20	23	13	21	20	21	23	26	17	18	19	14
McLean	55	70	81	77	86	78	75	75	70	53	51	51
Mercer	29	30	30	39	36	37	36	49	44	46	34	32
Morton	13	24	50	42	32	34	46	48	54	53	47	45
Mountrail	55	58	56	48	64	61	64	67	76	71	81	75
Nelson	0	0	0	0	0	0	0	0	0	0	0	1
Oliver	0	0	0	0	0	0	0	0	0	0	0	3
Pembina	3	4	8	8	4	5	4	4	5	4	3	1
Pierce	41	39	42	44	33	30	32	32	26	36	30	30
Ramsey	10	20	18	17	21	29	23	28	33	30	26	21
Ransom	0	0	0	0	0	0	0	0	0	0	0	2
Renville	38	50	57	52	74	80	74	68	67	47	42	39
Richland	2	1	0	2	2	4	8	4	11	5	6	2
Rolette	69	99	101	112	118	81	78	77	75	81	69	50
Sheridan	5	5	6	8	9	6	6	7	5	4	2	1
Stark	18	10	20	19	16	22	16	27	26	39	33	32

Steele	0	0	0	0	0	0	0	0	0	0	0	1
Stutsman	11	7	5	7	5	8	10	12	10	10	9	10
Towner	7	9	10	5	7	6	9	10	11	8	9	8
Traill	0	0	0	0	0	0	0	0	0	0	0	4
Walsh	2	3	6	5	9	6	6	5	7	7	7	8
Ward	1959	1515	1445	1404	1752	1887	2008	1893	1865	1725	1709	1871
Wells	20	22	21	19	21	19	20	21	15	15	21	17
Williams	78	96	81	77	98	95	88	103	104	94	79	77
Total ND												2825

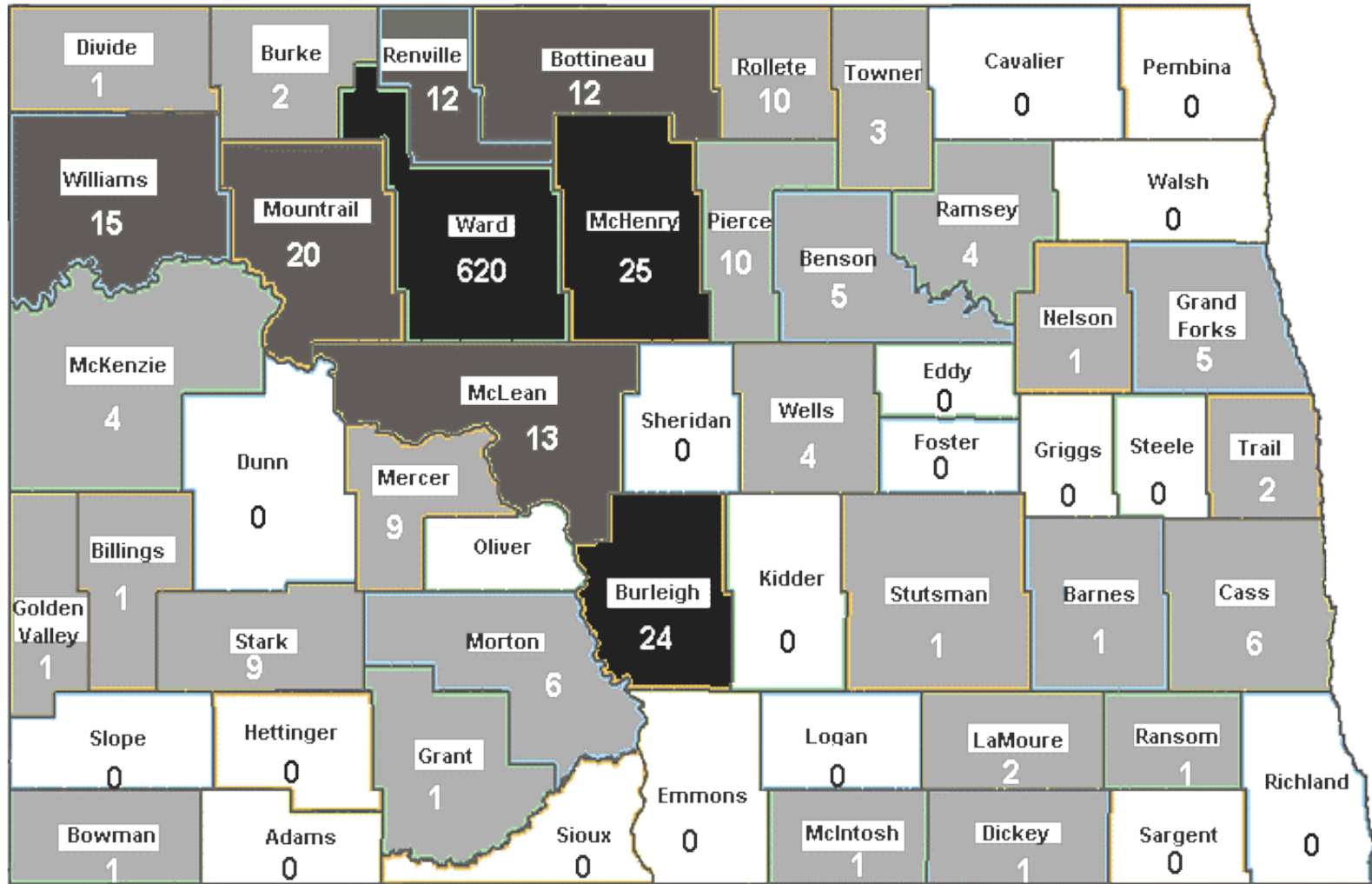
Data Source: NDUH2SRG- North Dakota Official Enrollment Reports provided by Registrar's Office.

Counties not included above (average by 1997/2005/2006/2007):

Barnes (3/7/8/1), Billings (0.25/0/1/0), Bowman (4/4/10/8), Dickey (1,75/1/1), Eddy (1.125/1/1), Emmons (3.875/10/10), Foster (3.375/3/3), Golden Valley (1.875/2), Grant (2.25/2/3), Griggs (1.625/5/4), Kidder (2/0/5), LaMoure (2.75/04), Logan (0.875/0/2), McIntosh (2/3/1), Nelson (2.375/0/2), Oliver (2.75/4/2), Ransom (0.75/2/4), Sargent (1.5/3/5), Sioux (1.5/7/2), Slope (0.625/2/2), Steele (0.5/4/2), Traill (1.5/5/7).

Freshman by North Dakota County: Fall 2008

N=834



Copyright 2005 digital-topo-maps.com

Data Source: 4th Week Official Enrollment Report : NDUH2SRG

Minot State University
Freshman* by North Dakota County
1997 - 2008

	1997	1998	1999	2000	2001	2002	2003	2004	2005	2006	2007	2008
Barnes									5	1	0	1
Benson	1	0	2	1	4	1	6	1	3	2	5	5
Billings	0	0	0	0	0	0	0	0	0	0	0	1
Bottineau	20	10	11	10	21	18	25	17	32	17	18	12
Bowman	0	0	0	0	0	0	0	0	0	0	0	1
Burke	3	7	5	2	6	8	4	8	14	8	11	2
Burleigh	11	11	9	12	12	14	17	27	71	25	26	24
Cass	0	0	1	1	4	6	1	2	7	1	2	6
Cavalier	1	2	3	7	6	4	6	5	2	2	3	0
Dickey	0	0	0	0	0	0	0	0	0	0	0	1
Divide	8	4	4	5	1	5	2	5	9	1	4	1
Dunn	1	0	0	3	2	4	5	3	6	2	3	0
Eddy	0	0	0	0	0	0	0	0	0	0	0	0
Golden Valley	0	0	0	0	0	0	0	0	0	0	0	1
Grand Forks	2	4	1	3	3	5	6	4	9	4	3	5
Grant	0	0	0	0	0	0	0	0	0	0	0	1
Hettinger	1	1	1	1	0	2	0	3	3	2	1	0
Kidder	0	0	0	0	0	0	0	0	0	0	0	0
LaMoure	0	0	0	0	0	0	0	0	0	0	0	2
McHenry	23	34	34	25	45	37	39	41	49	46	30	25
McIntosh	0	0	0	0	0	0	0	0	0	0	0	1
McKenzie	4	2	2	11	6	8	6	4	3	6	5	4
McLean	21	19	21	22	23	18	13	19	23	9	16	13
Mercer	12	7	13	18	8	10	11	10	11	7	7	9
Morton	3	4	0	5	0	7	9	9	19	16	7	6
Mountrail	10	11	9	11	23	20	17	14	32	21	25	20
Nelson	0	0	0	0	0	0	0	0	0	0	0	1
Pembina	3	1	2	0	0	2	1	1	2	0	1	0
Pierce	18	11	12	14	9	5	14	10	7	13	10	10
Ramsey	2	2	4	3	3	8	7	4	12	4	2	4
Ransom	0	0	0	0	0	0	0	0	0	0	0	1
Renville	12	6	16	13	25	36	30	26	26	17	12	12
Richland	1	1	0	1	1	1	4	0	9	1	0	0
Rolette	10	11	19	10	15	11	13	12	25	16	11	10
Sheridan	2	1	2	1	1	0	1	4	2	1	0	0
Stark	9	0	2	4	4	6	6	7	14	13	7	9
Stutsman	5	0	0	2	0	5	2	2	4	2	3	1
Towner	3	2	3	1	4	1	2	0	6	1	2	3
Traill	0	0	0	0	0	0	0	0	0	0	0	2
Walsh	0	0	3	0	4	3	2	3	2	1	0	0

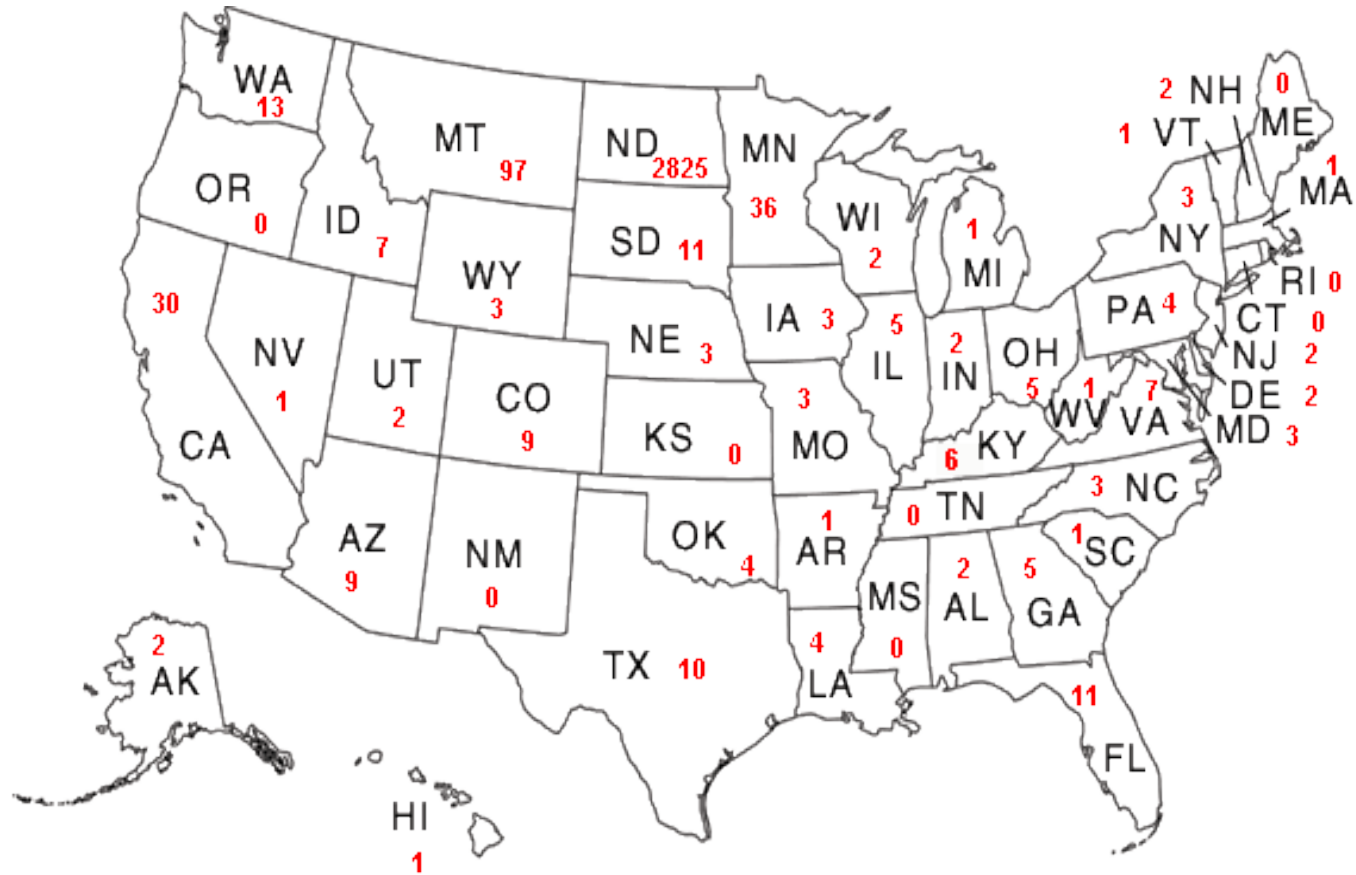
Ward	451	394	446	424	506	566	653	582	746	596	540	620
Wells	7	7	11	4	6	4	5	7	3	4	11	4
Williams	14	16	18	13	23	18	21	28	49	19	16	15
Total ND												834

Data Source: NDUH2SRG- North Dakota Official Enrollment Reports provided by Registrar's Office.

Other country totals for 8 years / total for 2007: Adams (7/2), Billings (3/0), Bowman (14/3), Dickey (2/0), Eddy (3/0), Emmons (7/2), Foster (7/1), Golden Valley (4/0), Grant (9/1), Griggs (4/1), Kidder (5/0), LaMoure (1/0), Logan (1/0), McIntosh (4/0), Nelson (5/1), Oliver (5/0), Ransom (3/1), Sargent (4/0), Sioux (3/1), Slope (2/0), Steele (2/0), Traill (4/1).

* Freshman students are defined as any first-time students and any other student who has not yet obtained sufficient credits to advance to sophomore standing. Data source for 2007: PeopleSoft Report ID # NDUH2SRG

**MSU Enrolled Students by State of Origin
Fall 2008 (n = 3172)**



State	2005	2006	2007	2008	State	2005	2006	2007	2008	State	2005	2006	2007	2008
AK	6	5	6	2	LA	1	2	2	4	OH	6	4	3	5
AL	1	1	2	2	MA	2	5	1	1	OK	0	1	0	4
AR	1	2	2	1	MD	3	7	2	3	OR	4	2	3	0
AZ	9	8	6	9	ME	0	0	0	0	PA	2	5	1	4
CA	30	35	30	30	MI	4	3	1	1	RI	0	1	0	0
CO	11	13	11	9	MN	36	34	28	36	SC	1	2	0	1
CT	1	0	0	0	MO	6	4	6	3	SD	24	27	14	11
DE	0	1	1	2	MS	1	2	0	0	TN	0	0	1	0
FL	9	19	15	11	MT	103	127	111	97	TX	14	8	7	10
GA	3	3	3	5	NC	3	3	2	3	UT	3	2	4	2
HI	2	1	1	1	ND	3,140	2,987	2,803	2825	VA	8	10	14	7
IA	4	2	7	3	NE	3	2	0	3	VT	0	0	0	1
ID	18	9	10	7	NH	1	1	1	2	WA	22	21	8	13
IL	8	8	6	5	NJ	3	2	3	2	WI	5	5	4	2
IN	1	0	4	2	NM	3	2	1	0	WV	5	3	4	1
KS	1	3	2	0	NV	4	7	3	1	WY	8	9	5	3
KY	2	2	6	6	NY	8	7	2	3	*AE	5	4	6	2

* Armed Forces (Europe and Pacific combined)

Data Source: NDUH2SRG- North Dakota Official Enrollment Reports provided by Registrar's Office.

Minot State University International Students: Fall 2008

Country	FR	SO.	JR	SR	Grad	Total
Brazil	1		1			2
Canada	64	61	39	56	32	252
China	2			1	3	9
Croatia				1		1
France			1			1
Ghana					5	5
Hong Kong	1					1
Korea	2					2
Jamaica	1					1
Nepal				1		1
Nigeria	2					2
Poland				1		1
Serbia		1		1		2
Portugal		1				1
United Kingdom	1		1			2
Totals	74	63	42	61	40	283

Data source: Report NDUH2SRG Enrollment Totals by State/County Provided by Registrar's Office 4th Week Official Enrollment Reports September 23rd, 2008.

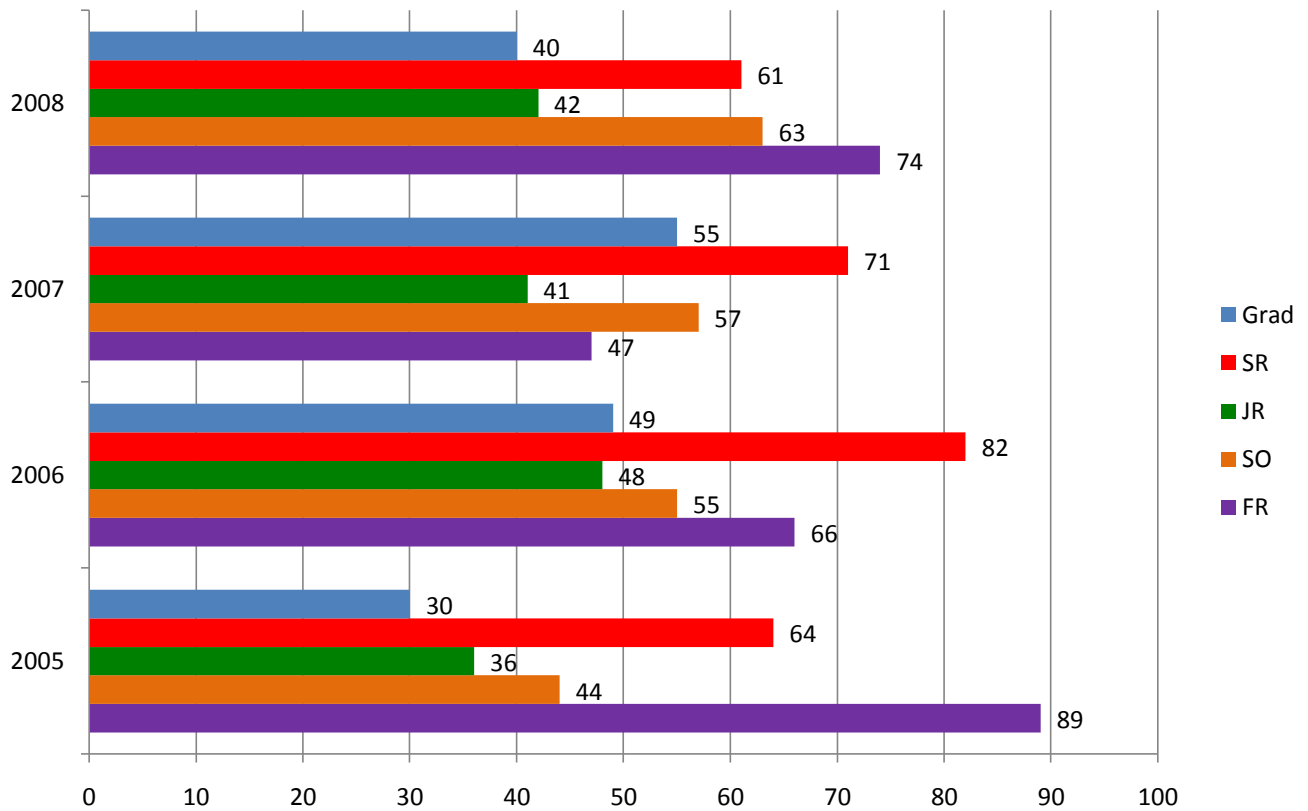
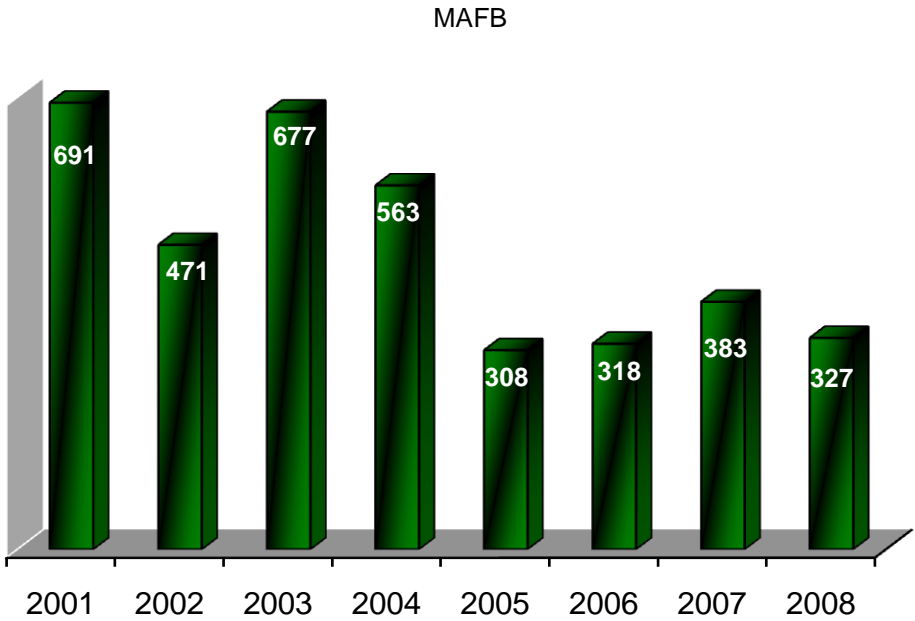
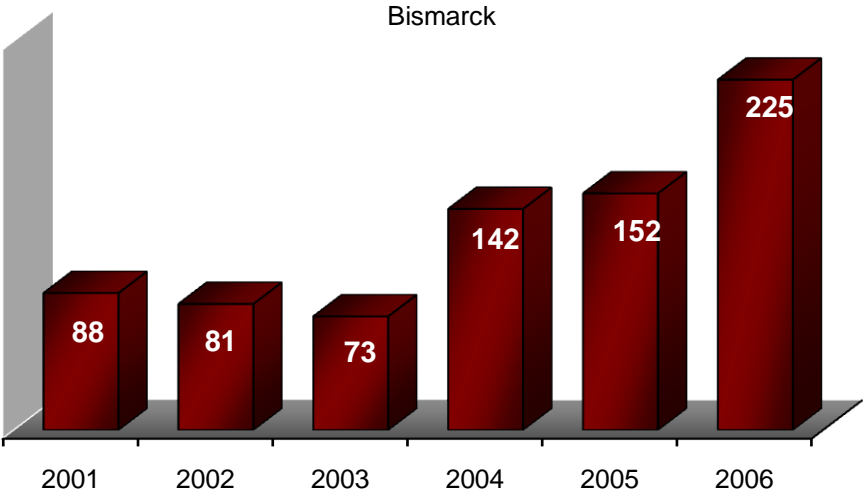
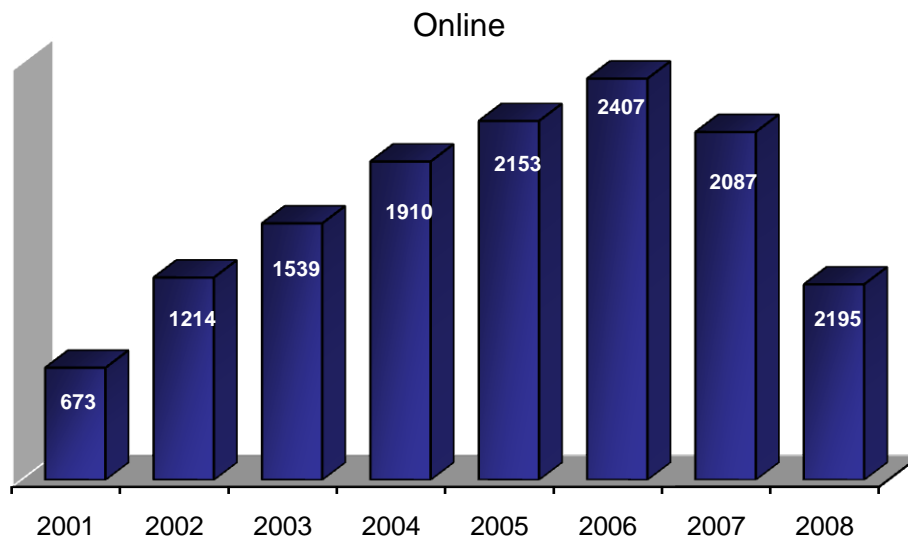
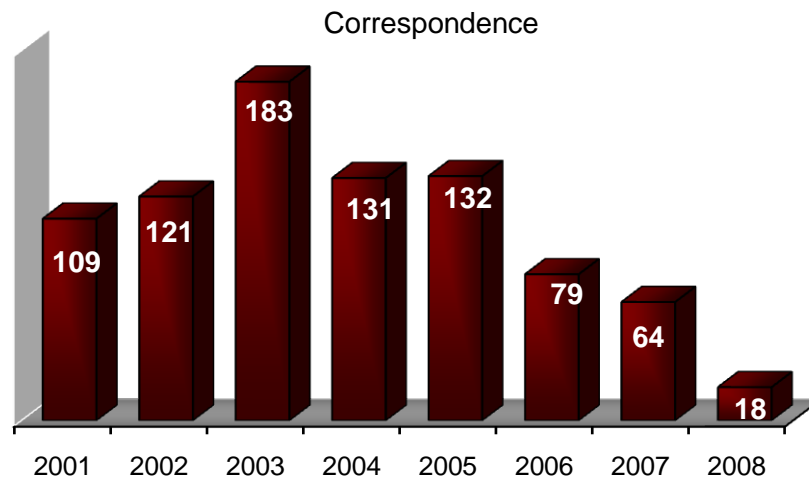


Figure 1 Status of International Students 2005-2008

**MSU Center for Extended Learning
Enrollments: Details by Program**



**MSU Center for Extended Learning
Enrollments: Details by Program (cont.)**



New First-year Student Applications and Enrollment Patterns 1999-2008

	1999	2000	2001	2002	2003	2004	2005	2006*	2007	2008
Applied	750	764	757	743*	713	753	645	690	641	643
Enrolled	525	511	506	552	543	527	471	448	436	437
Denied	24	26	25	37	45	39	19	16	24	23
% Enrolled	70.0	66.8	67.0	74.0	76.0	70.0	73.0	64.9	68	67.9%

Data Source: Registrar's Office: IPEDS Fall Admissions Part C Characteristics Survey-4th Week Official Enrollment Numbers.

*Data in the 2006 column is changed in the 2007Fact Book. The data received from Admissions for 2006 had included students for fall and spring terms vs. fall semester only. The data now represents fall only data.

Retention of First-year Students 1998-2008

Term	Full-time First Time Freshmen	Term	Still Enrolled	Retention Percentage
Fall 98	418	Fall 99	264	63%
Fall 99	525	Fall 00	301	57%
Fall 00	511	Fall 01	315	62%
Fall 01	506	Fall 02	321	63%
Fall 02	551	Fall 03	321	58%
New Calculation: 1998 – 2002 Calculation for Retention: <u>All</u> new freshmen who return the following year. *2004 Calculation for Retention: New freshmen enrolled Fall 2003 (12 semester hours or more) and returned for <u>any</u> number of credits in Fall 2004.				
Fall 03	396	Fall 04	248	*62.7%
Fall 04	393	Fall 05	274	70.0%
Fall 05	445	Fall 06	279	62.7%
Fall 06	483	Fall 07	292	60%
Fall 07	419	Fall 08	291	69%

Source: Peoplesoft NDU02SRK – NDU02SRL and IPEDS Spring Report Part E. Previous years indicated duplicated numbers and withdrawal students for 4th week.

New Transfer Application and Enrollment Patterns 1999-2008

New Transfer	1999	2000	2001	2002	2003	2004	2005	2006	2007	2008
Applied	654	639	559	563	551	616	633	527	546	448
Enrolled	336	328	419	429	449	493	584	443	355	358
% Enrolled	51.4	51.3	75.0	76.0	81.5	80.0	63.8	59.9	65.0	79.9%

Source: Registrar's Office IPEDS Report Part C- Transfer Student Characteristics

Minot State University
Cumulative Average GPA: 1999 – 2008
Undergraduate

	98-99	99-00	00-01	01-0	02-03	03-04	04-05	05-06	06-07	07-08
Freshman	2.26	2.23	2.31	2.28	2.31	2.36	2.51	2.62	**	2.47
Sophomore	2.69	2.59	2.64	2.72	2.65	2.73	2.76	2.55	**	2.83
Junior	2.90	2.85	2.83	2.90	2.91	2.87	2.94	2.52	**	2.99
Senior	3.04	3.03	3.04	3.04	3.04	3.08	3.07	2.80	**	3.13
UG Special	3.15	3.20	3.17	3.19	3.28	3.25	3.23	**	**	**
Average	2.93	2.92	2.93	2.91	2.93	2.96	2.99	2.62	2.95	3.01

** Undergraduate Specialist is no longer tracked in the software. These students are now included with students with Senior Status. **Data provided by MSU Registrar's Office.**

Graduate Student GPA 1998-2008

98-99	99-00	00-01	01-02	01-03	03-04	04-05	05-06	06-07	07-08
3.81	3.76	3.73	3.70	3.72	3.71	3.75	3.15	3.82	3.73

Data provided by MSU Registrar's Office.
 Confirmed with the Graduate School

Comparison of ACT
National, State, and Minot State University
Averages by Year
Fall Semester

Year	NATIONAL					STATE					MINOT STATE UNIVERSITY				
	03/04	04/05	05/06	06/07	07/08	03/04	04/05	05/06	06/07	07/08	03/04	04/05	05/06	06/07	07/08
Composite	21.5	20.9	20.9	21.1	21.1	21.2	21.2	21.3	21.4	21.6	21.3		21.2	21.2	21.2
English	21.1	20.4	20.4	20.6	20.6	20.2	20.2	20.4	20.5	20.7	20.3		20.3	20.1	20.3
Mathematics	20.9	20.7	20.7	20.8	21.0	21.3	21.3	21.2	21.4	21.6	21.1		20.9	21.0	21.0
Reading	22.0	21.3	21.3	21.4	21.4	21.5	21.5	21.4	21.6	21.8	22.0		21.8	21.6	21.8
Science	21.4	20.9	20.9	20.9	20.8	21.4	21.4	21.5	21.5	21.5	21.2		21.5	21.6	21.4

Data Source: Registrar's Office~ Fall ACT Data file provided to IPEDS.
 National and State Data found <http://www.act.org/news/data/states.html>
 Data for 04/05 is not retrievable due to the PeopleSoft transition.

**MSU Student Housing Fall 2002 – 2008
By Residence Facility**

Residence	Cap	2002	2003	2004	2005	2006	2007	2008	% Change
Women's									
Cook Hall	188	157	129	161	138	145	121	120	-8.2
Dakota Hall	96	65	72	72	73	47	28	41	46.4
Men's									
McCulloch Hall	145	119	117	97	94	103	90	85	-5.5
Co-Ed									
C.P. Lura Manor	144	101	99	111	111	74	79	82	3.7
Apartment									
Pioneer Hall	40	39	30	35	33	39	40	34	15.0
Campus Heights	30	30	30	30	21	28	30	27	-10.0
Suite-Style Living									
Crane Hall	88	n/a	n/a	n/a	n/a	51	66	51	-22.7
Total	731	511	477	506	460	487	454	440	-3.0

Data Source: Pat Hrichena & Lisa Eriksmoen~ Residence Life (Housing) Data Retrieved January 2, 2009.
<http://www.csgnetwork.com/percentchangepcalc.html> Percentage Change Calculator
 Cap. = capacity.

Average Cost for Residence Hall Room per Semester

	2002	2003	2004	2005	2006	2007	2008
Single	\$922.50	\$967.50	\$1,008.00	\$1037.50	\$1531.25	\$1680.00	\$1468.00
Double	\$615.00	\$645.00	\$672.50	\$700.00	\$785.00	\$817.50	\$817.50

Data Source: Pat Hrichena and Lisa Eriksmoen~ Residence Life (Housing) Data Retrieved January 2, 2009.

**MSU Residence Hall Disciplinary Action
Fall 2000 to Fall 2008**

	Fall 00	Sp 01	Fall 01	Sp 02	Fall 02	Sp 03	Fall 03	Sp 04	Fall 04	Sp 05	Fall 05	Sp 06	Fall 06	Sp07	Fall 07	Sp08	Fall 08
Visitation	34	29	52	28	67	15	45	23	41	39	56	22	46	22	50	18	37
Alcohol	29	10	45	37	24	24	60	10	39	24	11	20	55	11	45	23	16
Miscellaneous	21	26	52	41	64	69	79	43	70	58	34	10	66	42	91	26	54

Data Source: Pat Hrichena & Lisa Eriksmoen~ Residence Life (Housing) Data Retrieved January 2, 2009.

Visitation: Opposite sex guest in building past guest hours.

Miscellaneous: Fights, parties, smoking.

Data Source: Director of Plant Services (2000-2005), Student Affairs 2006 data.

Minot State University Crime Statistics*

Jan-Dec 1999 to Jan-Dec 2007

	Jan-Dec 1999	Jan-Dec 2000	Jan-Dec 2001	Jan-Dec 2002	Jan-Dec 2003	Jan-Dec 2004	Jan-Dec 2005	Jan-Dec 2006	Jan-Dec 2007
Crimes									
Murder	None	None	None	None	None	None	None	None	None
Forcible Sex Offenses	None	None	None	None	1	None	None	None	None
Robbery	None	None	None	None	None	None	None	None	None
Aggravated Assault	None	None	None	None	None	None	None	None	3
Burglary	2	None	None	1	2	2	6	20	9
Motor Vehicle Theft	None	None	3	3	2	None	2	None	None
Arrests									
Liquor Law Violation	29	43	69	73	76	63	36	86	31
Drug Abuse	4	4	4	None	5	6	2	None	2
Weapons	1	1	1	1	1	1	2	None	None

Source: Campus Safety and Security Bulletin 2008- Plant Services

*Arrests or reported crimes on campus, on property of university affiliate organizations, or affecting university sanctioned events. Data is computed on the calendar year not the academic or fiscal year. Data Source: Director of Plant Services (2000-2005), Student Affairs (2006 data).

Minot State University

- ***Declared Majors***
- ***Degrees Conferred***
- ***Certificates Conferred***

**College of Arts and Sciences:
Declared Major-Spring Term**

Majors are combined where indicated (BA/BSE)

Program	1998	1999	2000	2001	2002	2003	2004	2005	2006	2007	2008
Art (BA/BSE)	33	63	58	56	63	69	78	97	68*	66	71
Arts Administration (BS)							0	0	1	1	1
Fine Arts									4	2	3
Biology/Biology Education	66	71	62	58	73	76	75	90	125*	122	112
Broadcasting (BA)	45	45	53	36	48	50	54	39	70*	51	51
Chemistry (BA/BSE)	7	12	10	12	14	15	22	27	283*	70	57
Clinical Laboratory Science	20	22	21	15	11	6	4	9	8*	10	14
Communication (BA)							0	2	9*	9	6
Communication Arts (BA/BSE)	29	28	29	23	25	30	34	21	7*	5	8
Computer Science (BS)	79	100	102	112	124	109	93	113	98*	67	61
Criminal Justice (BS)	178	160	189	205	237	239	258	262	299	209	199
Earth Science/Geology	17	18	17	15	6	9	14	17	17	20	21
Earth Science Education (BSE)	0	0	0	0	9	7	4	2	2	1	2
Economics (BA)	11	9	11	8	7	8	8	7	7	3	2
English (BA/BSE)	79	62	64	63	77	64	62	80	62*	74	66
Foreign Language (BA/BSE)	1	0	0	0	0	0	0	0	*	2	0
German (BA/BSE)	3	4	4	4	8	10	7	8	5	8	4
French (BA/BSE)	1	4	5	2	1	6	7	3	4	3	4
Spanish (BA/BSE)	10	11	15	9	13	17	15	18	8*	16	11
General Studies (BGS)	333	322	347	363	547	690	825*	282	140	196	199
History (BA/BSE)	50	57	48	46	60	58	76	93	95	82	83
Mathematics (BA/BSE)	39	50	30	32	47	45	54	81	57*	65	53
Multimedia Studies (BS)				0	14	19	8	9	9*	3	6
Music (BA/BSE)	50	58	66	67	64	61	61	64	42*	52	51
Pre-Chiropractic	13	13	8	6	5	6	8	9	Now enrolled as biology, chemistry, history (law), physics, etc.		
Pre-Dental Hygiene	4	4	3	3	3	7	4	4			
Pre-Dentistry	4	5	3	3	11	10	11	14			
Pre-Engineering	17	20	10	15	8	6	4	12			
Pre-Law	7	9	9	8	8	7	6	3			
Pre-Medical	19	19	16	18	18	14	12	15			
Pre-Mortuary	6	4	5	4	2	1	3	0			
Pre-Occupational Therapy	5	6	1	3	2	2	1	0			
Pre-Optometry	7	1	4	1	3	5	3	2			
Pre-Pharmacy	9	7	6	4	13	13	7	6			
Pre-Physical Therapy	10	14	12	9	6	6	8	9			
Pre-Veterinary Medicine	7	4	6	7	5	7	10	10			
Pre-Wildlife Studies	1	1	3	1	1	2	1	0			

Physical Science (BA/BSE)	3	3	5	5	8	3	3	2	0*	2	2
Physics (BA/BSE)	5	6	5	8	10	6	7	13	21*	17	18
Radiologic Technology (BS)	52	53	45	51	50	74	58	70	65	68	52
Social Science (BA/BSE)	45	27	22	27	33	32	30	22	13*	25	18
Sociology (BA/BSE)	16	19	18	18	27	30	32	32	31*	27	25
Theatre Arts (BA)							0	3	15*	17	17
Total Majors by College	1281	1311	1312	1317	1661	1819	1967	1550	1332	1293	1217

Data Source: Major Minor Reports by College Provided by Registrar's Office

Note: For declared majors for 2005-06, PeopleSoft data replaced the Legacy system. PeopleSoft did not allow for "PRE" programs so students had to choose majors in related fields. **Starting in Spring 2005 the data includes 2nd majors.** Graduate students are included in the totals for Communication Disorders, Criminal Justice, Elementary Education, Management, Mathematics, and Music in 05-06 as the data had been historically tabulated this way.

College of Education and Health Sciences Declared Major - Spring Terms

Program	1998	1999	2000	2001	2002	2003	2004	2005	2006	2007	2008
Addiction Studies (BS)	2	31	14	13	19	24	32	34	28	36	35
Communication Disorders (BS)	122	106	105	108	98	112	144	157	200*	180	121
Communication Disorders Ed. (BSE)	New 2001			0	0	0	0	14	6	0	0
Corporate Fitness (BS)	35	48	42	37	31	31	35	40	44*	58	56
Developmental Disabilities (AS/BS)	3	6	4	2	5	9	11	8	34*	6	16
Education of the Deaf (BSE)	36	40	29	43	29	31	22	12	4*	4	3
Ed. of the Mentally Retarded (BSE)	48	35	22	30	33	46	28	42	54	55	64
Elementary Education (BSE)	382	338	307	289	305	315	268	304	323	260	240
Nursing (BSN)	190	185	169	174	227	239	246	300	271	256	247
Physical Education (BSE)	77	69	49	66	59	67	80	84	87	89	93
Psychology (BA/BSE)	144	120	128	129	127	101	99	131	122	118	115
Social Work (BSW)	112	118	96	89	93	77	64	62	88	100	97
Total Majors by College	1151	1096	965	980	1026	1052	1029	1188	1166	1162	1087

Data Source: Major Minor Reports by College Provided by Registrar's Office

Note: For declared majors for 2005-06, PeopleSoft data replaced Legacy system. PeopleSoft did not allow for "PRE" programs so students had to choose majors in related fields. **Starting in Spring 2005 the data includes 2nd majors.** Graduate students are included in the totals for Communication Disorders, Criminal Justice, Elementary Education, Management, Mathematics, and Music in 05-06 as the data had been historically tabulated this way.

College of Business: Declared Major - Spring Terms

Program	1998	1999	2000	2001	2002	2003	2004	2005	2006	2007	2008
Accounting (BS)	130	128	121	110	116	125	135	132	139	111	113
Applied Bus. Info. Tech. (BAS)							6	17	24*	21	20
Applied Management (BAS)							2	11	11*	21	22
Business Ed. (BSE)	33	30	36	46	31	26	30	36	7*	23	21
Finance (BS)	73	74	64	61	76	96	93	88	163*	81	67
General Business (BAS)	0	0	0	0	0	10					
International Business (BS)	0	6	11	22	23	28	15	13	6	3	3
Management (BS)	246	239	264	269	273	287	310	333	326*	339	359
Management Info. Systems (BS)	66	93	106	84	125	125	132	120	78	67	49
Marketing (BS)	53	51	55	58	54	42	45	75	74*	81	81
Virtual Business (BS)	0	0	0	0	0	0	0	2	0*	2	1
Total Majors by College	601	621	657	650	698	739	768	827	789	749	736

Note: For declared majors for 2005-06, PeopleSoft data replaced Legacy system. PeopleSoft did not allow for "PRE" programs so students had to choose majors in related fields. **Starting in Spring 2005 the data includes 2nd majors.** Graduate students are included in the totals for Communication Disorders, Criminal Justice, Elementary Education, Management, Mathematics, and Music in 05-06 as the data had been historically tabulated this way. Below is a breakdown of all the graduate programs.

Graduate School: Declared Major -Spring Terms

Program	97/98	98/99	99/00	00/01	01/02	02/03	03/04	04/05	05/06	06/07	07/08
Audiology	12	8	2					0	0	0	0
Communication Dis	1	7	25	13	14	14	39	49	53	48	49
Criminal Justice	4	9	7	18	12	12	10	13	9	10	10
Education (Deaf)	5	0	0	0	0	0	0	0	0	0	0
Education (M.R.)	0	0	0	0	0	0	0	0	0	0	0
Elementary Ed.	1	3	2	1	24	1	0	0	1	0	0
English Ed.	0	0	0	1	0	0	0	0	1	0	0
Education					8	35	23	34	31	43	52
Learning Dis.	6	11	8	0	0	0	0	0	0	0	0
Information Sys.								15	36	26	28
Management	20	26	30	48	59	51	52	21	34	71	50
Mathematics Masters											25
Mathematics Ed.	5	1	1	1	4	3	6	13	19	1	0
Music Ed.	4	2	1	1	1	0	0	1	1	0	0
School Psych.	17	16	19	20	20	16	15	17	17	11	13
Science Ed.	1	0	2	1	0	1	4	1	0	0	0
Svr. Multi-Handicapped	0	0	0	0	0	0	0	0	0	0	0
Special Ed.	5	11	18	15	21	28	26	49	45	56	53
Speech Language Path.	27	31	15	27	23	0	0	0	0	0	0
Psychology								0	0	0	0
Total Graduates	108	125	130	146	186	154	175	213	247	260	280

Data Source: Major Minor Reports by College Provided by Registrar's Office

Degrees Conferred College of Arts and Sciences

Program	97/98	98/99	99/00	00/01	01/02	02/03	03/04	04/05	05/06	06/07	07/08
Art (BA)	2	5	3	6	5	9	2	7	3	4	6
Art (BFA)	New in 2004										
Arts Administration (BS)	New in 2002						0	0	0	0	0
Art Education (BSE)	2	3	0	0	0	1	2	1	1	3	1
Biology (BA)	3	6	7	9	8	7	10	7	13	12	8
Biology Education (BSE)	4	2	0	2	3	2	3	2	3	0	1
Broadcasting (BA)	4	8	9	6	3	4	14	7	9	3	4
Chemistry (BA)	0	2	0	0	0	1	1	3	1	4	7
Chemistry Education (BSE)	0	0	1	0	0	0	2	0	0	0	0
Clinical Laboratory Science (BS)	2	3	4	0	5	3	0	0	1	1	2
Communication Arts (BA)	6	3	5	2	1	2	4 Inactivated			1	0
Communication (BA)	New in 2004						0	0	2	0	1
Communication Arts (BSE)	1	0	1	1	2	0	0	0	1	1	0
Computer Science (BS)	9	17	12	10	20	11	9	10	15	7	7
Criminal Justice (BS)	46	55	61	55	53	43	47	41	53	47	48
Earth Science (BA)	0	2	0	0	0	0	0	0	0	0	0
Earth Science Education (BSE)	0	0	0	1	0	2	0	0	1	1	0
Economics (BA)	1	4	4	4	4	2	5	0	1	2	1
English (BA)	3	9	6	2	3	4	8	4	4	7	5
English Education (BSE)	6	7	6	7	2	4	3	3	6	6	3
Foreign Language (BA)	1	2	3	0	0	0	0	0	0	0	0
Foreign Language/German (BA)	Split in 1999		0	0	1	2	0	3	0	0	0
Foreign Language/French (BA)			0	1	0	1	0	0	1	0	0
Foreign Language/Spanish (BA)			0	0	0	0	1	1	0	1	2
Foreign Language/German (BSE)			0	0	1	1	0	0	1	0	0
Foreign Language/French (BSE)			0	0	0	0	0	0	0	0	0
Foreign Language/Spanish (BSE)			1	0	2	0	0	2	0	0	1
General Studies (BGS)			3	8	13	19	13	16	28	15	25
Geology (BA)	0	0	1	2	0	1	1	2	0	0	28

History (BA)	3	5	6	3	5	5	4	4	5	3	4
History Education (BSE)	5	2	7	4	5	1	6	2	1	4	11
Mathematics (BA)	8	5	2	2	3	5	4	4	1	2	5
Mathematics Education (BSE)	5	5	5	2	3	2	5	2	5	6	6
Multimedia Studies (BS)	New 1999			0	0	1	2	0	0	0	0
Music (BA)	2	1	0	5	6	2	5	4	3	0	3
Music Education (BSE)	2	6	7	8	7	7	5	3	7	6	2
Physical Science (BA)	0	0	0	0	0	0	0	2	0	0	0
Physical Science Ed. (BSE)	1	1	0	1	1	3	0	0	0	0	0
Physics (BA)	0	1	0	0	1	1	1	1	0	0	1
Physics Education (BSE)	0	0	1	1	0	0	0	0	1	0	0
Radiologic Technology (BS)	8	9	15	5	5	4	8	12	14	7	6
Social Science (BA)	4	4	1	1	2	4	2	2	0	1	1
Social Science Education (BSE)	6	4	5	3	6	2	9	1	0	4	0
Sociology (BA)	5	4	10	3	6	3	8	5	7	6	9
Theatre Arts (BA)	New 2004						0	0	1	2	1
Total Graduates by College	142	183	196	165	175	153	199	150	186	168	163

Data Source: Completions Data for NDUS Provided by Registrar's Office

Data Sources: Graduation data for first majors is from the annual publication "North Dakota University System: Programs Offered/Completed at North Dakota Institutions of Postsecondary Education."

Second Majors Reported to IPEDS

Arts and Sciences

Data for second majors is from the MSU Registrar's Office from the document reported to the National Center for Education Statistics' Integrated Postsecondary Education Data System (IPEDS).

College of Arts & Sciences	2005	2006	2007	2008
Art	2	0	0	0
Broadcasting	0	0	0	1
Mathematics Education	1	0	0	0
Mathematics	3	1	2	2
Music	0	3	1	1
Medical Radiological Tech	1	0	0	0
Science Education	0	1	0	0
History Education	0	2	0	0
Science Education	0	1	0	0
History Education	0	2	2	2
German	1	1	0	0
Spanish	0	1	1	1
Chemistry	1	0	0	1
Biology	0	0	0	1
Physics	0	0	0	1
Clinical Lab Sciences	0	1	0	0
History	0	2	0	1
Criminal Justice	0	0	0	1
Computer Science	0	0	1	1
Information Science	0	0	1	1
Communication Studies	0	0	1	1
Total	9	15	9	15

Source: IPEDS Survey ~ Registrar's Data <http://surveys.nces.ed.gov/ipeds/>

College of Education and Health Sciences

Program	97/98	98/99	99/00	00/01	01/02	02/03	03/04	04/05	05/06	06/07	07/08
Addiction Studies (BS)	6	14	7	2	1	4	3	6	7	5	1
Communication Disorders (BS)	41	22	23	22	18	7	16	16	20	25	30
Communication Disorders Education (BSE)	New 2001			1	0	9	0	0	0	0	0
Corporate Fitness (BS)	9	11	20	11	8	7	12	2	9	12	10
Developmental Disabilities (AS)	1	0	6	2	2	1	1	1	2	3	1
Developmental Disabilities (BS)	1	0	3	1	0	0	1	4	3	3	2
Education of the Deaf (BSE)	10	8	5	7	3	4	0	3	2	1	0
Education of the Mentally Retarded (BSE)	16	15	13	11	3	8	8	5	8	3	7
Elementary Education (BSE)	93	93	63	75	55	72	47	61	48	36	56
Nursing (BSN)	35	32	32	33	31	51	33	46	46	48	34
Physical Education (BSE)	12	8	15	11	7	11	13	3	5	18	12
Psychology (BA)	29	26	22	17	30	29	10	19	12	13	20
Psychology Education (BSE)	New Program 2001			1	1	0	0	0	0	2	4
Social Work (BSW)	39	39	24	26	18	21	17	11	11	14	21
Total Graduates by College	292	268	233	220	177	224	161	177	173	183	198

Data Source: Completions Data for NDUS Provided by Registrar's Office

Degrees Reported to IPEDS as First Majors. Reported in NDUS Degrees Offered/Degrees Completed. This originates in the MSU Registrar's Office.

Second Majors Reported to IPEDS

College of Education and Health Sciences	2005	2006	2007	2008
Education	1	1	0	0
Business Education	0	0	0	1*
Spanish Language Education	0	0	0	1
Elementary Education	2	10	7	6
Social Science	0	0	0	1
Physical Education	0	1	0	0
Corporate Fitness	0	1	8	3
Psychology	2	3	4	6
Sociology	2	3	5	1
Substance Abuse	1	0	0	0
Music Teacher Educator	0	0	1	0
Total	8	19	25	19

Source: IPEDS Survey ~ Registrar's Data <http://surveys.nces.ed.gov/ipeds/>

College of Business

Program	97/98	98/99	99/00	00/01	01/02	02/03	03/04	04/05	05/06	06/07	07/08
Accounting (BS)	21	19	24	29	19	12	23	25	29	13	18
Applied Business Info. Tech. (BAS)	New 2003						3	5	6	8	9
Applied Management (BAS)	New 2003						1	0	2	2	10
Business Education (BSE)	5	8	4	9	13	9	4	4	4	1	3
Finance (BS)	13	23	30	23	12	21	23	20	15	10	19
General Business (BAS)	0	0	0	0	0	3					
International Business (BS)	New	1	3	3	4	3	7	2	0	1	6
Management (BS)	38	58	59	46	49	42	36	41	39	48	25
Management Information Systems (BS)	11	14	25	19	14	22	23	21	18	13	12
Marketing (BS)	13	19	18	22	16	14	12	19	9	4	21
Virtual Business (BS)	New 2004-05						0	0	0	0	0
Total Graduates by College	101	142	163	151	127	126	132	137	122	100	123

Data Source: Completions Data for NDUS Provided by Registrar's Office

College of Business

Second Majors Reported to IPEDS

College of Business	2005	2006	2007	2008
Management	4	5	1	4
Accounting	0	1	1	
Management Information Systems	0	0	0	1
Applied Business Information Technology	0	0	0	1
International Business	0	0	0	4
Finance	7	1	3	3
Marketing	8	9	20	14
Total	19	16	25	27

Source: IPEDS Survey ~ Registrar's Data <http://surveys.nces.ed.gov/ipeds/>

***Undergraduate Certificates Awarded
2001-2008***

Certificate Programs	00/01	01/02	02/03	03/04	04/05	05/06	06/07	07/08
Application Software Specialist	New 2001	2	1	9	9	6	2	3
Computer Science Basic Programming	New 2001	0	1	0	2	2	0	1
Desktop & Web Publishing	New 2001	1	1	1	2	1	0	5
Police Management & Investigations	New 2001	0	0	0	0	0	0	0

Data Source: Completions Data for NDUS Provided by Registrar's Office

***Undergraduate Graduation Rates
2004 - 2008***

Graduation Rates	03/04	04/05	05/06	06/07	07/08
Percentage rate of students who graduate within 6 years or less from original cohort.	30	29	27	31	30

Data Source: IPEDS Graduation Rates and Common Data Set

Graduate Degrees Conferred: 1998 through 2008

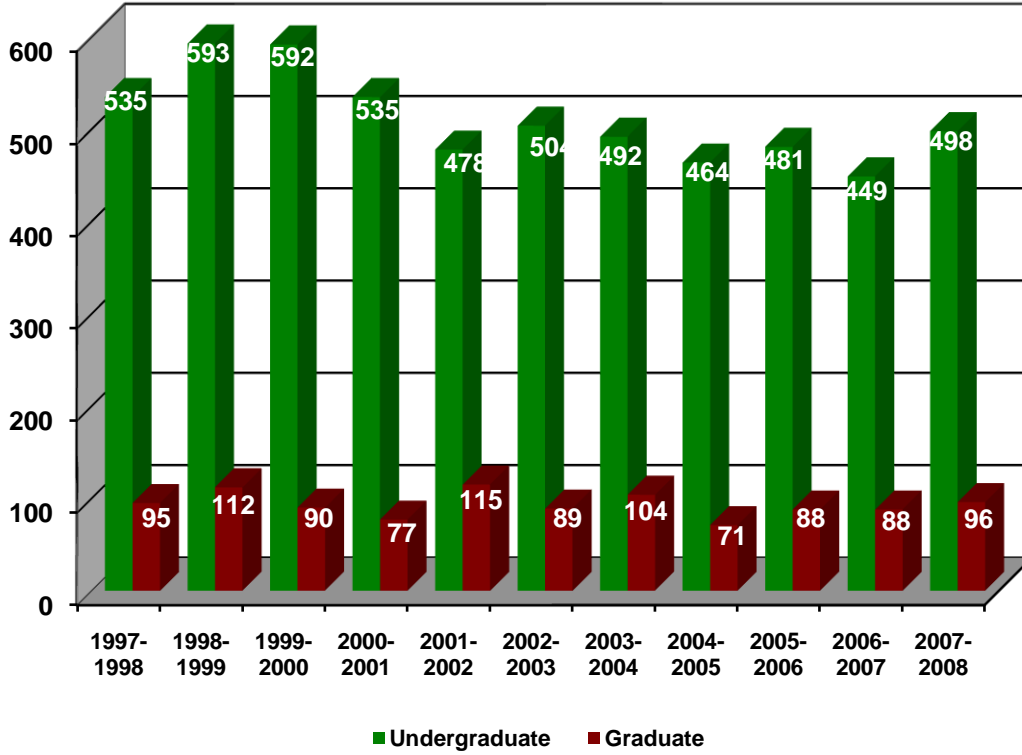
Program	97/98	98/99	99/00	00/01	01/02	02/03	03/04	04/05	05/06	06/07	07/08
Communication Disorders (MS)	36	38	29	33	30	25	19	18	25	14	31
Criminal Justice (MS)	1	4	0	2	0	1	4	3	2	3	2
Education (MED) New 2001-02						4	6	10	11	11	10
Elementary Education (MS)	14	35	18	4	30	0	6	0	0	0	0
English Education* (MAT)	New	0	0	3	7	0	1	0	1	0	0
Information Systems (MS) New 2003-04										6	8
Management (MS)	5	6	5	15	22	47	41	22	18	28	17
Mathematics Education (MAT)	9	9	5	3	7	2	8	4	5	2	6
Music Education (MME)	0	3	5	0	0	0	3	0	1	4	1
School Psychology (EDSPEC)	6*	2*	8	4	8	5	5	2	8	6	1
Science Education (MAT)	3	0	2	1	0	1	1	0	1	1	0
Special Education (MS)	21	15	18	12	11	4	10	12	16	13	20
Totals	95	112	90	77	115	89	104	71	88	88	96

*English Education – New 1997 – 1 cohort authorized.

**Graduate Certificates Awarded:
2000-2001 through 2007-2008**

Certificate	00/01	01/02	02/03	03/04	04/05	05/06	06-07	07/08
Technology for Managers New 2001	0	0	0	0	0	0	0	0

**Minot State University
Degrees Conferred 1998-2008**



**Minot State University
Degrees Conferred
1998-2008**

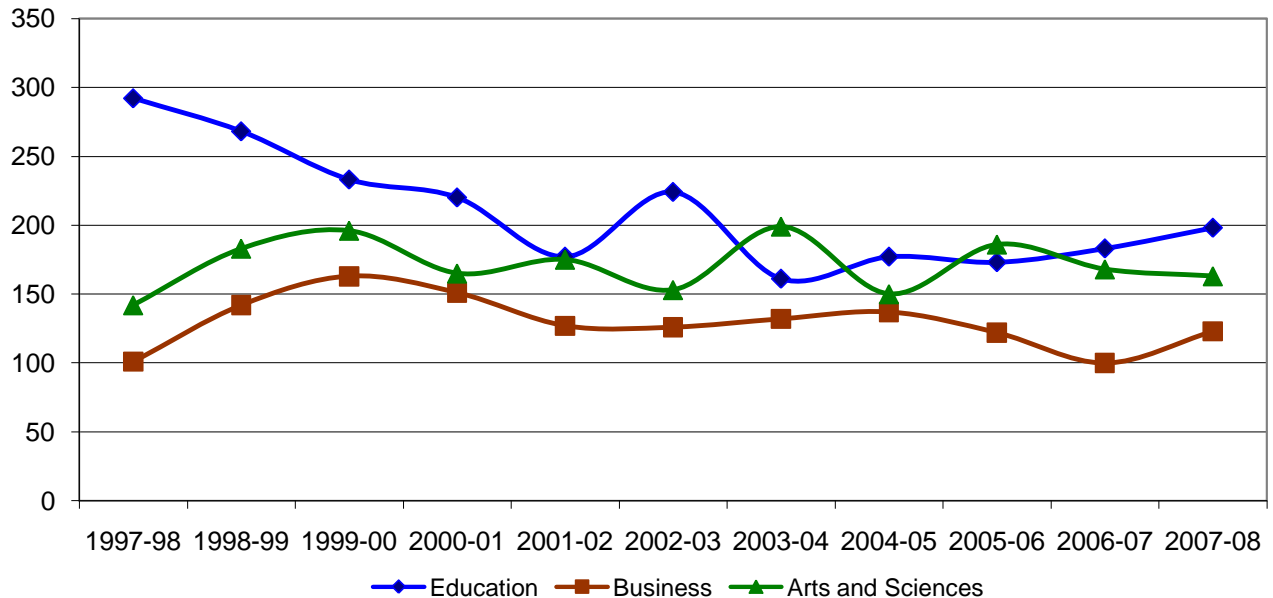
Year	Undergraduate	Graduate
1997-1998	535	95
1998-1999	593	112
1999-2000	592	90
2000-2001	535	77
2001-2002	478	115
2002-2003	504	89
2003-2004	492	104
2004-2005	464	71
2005-2006	481	88
2006-2007	449	88
2007-2008	498	96

Undergraduate Degrees Conferred 2003-2004 and 2007-2008

Undergraduate Degrees	2004	2005	2006	2007	2008
Associate of Arts (AA)	1	1	2	3	1
Bachelor of Arts (BA)	79	75	63	61	80
Bachelor of Applied Science (BAS)	4	5	8	8	20
Bachelor of Science (BS)	222	219	229	196	233
Bachelor of Science Education (BSE)	108	92	97	92	107
Bachelor of General Studies (BGS)	28	15	25	27	28
Bachelor of Science Nursing (BSN)	33	46	46	48	35
Bachelor of Social Work (BSW)	17	11	11	14	21
Total	492	464	481	449	525

Data Source: Registrar's Office Degree Completions by Degree Type Query NDU_0077_SR-DR Graduates by Program/plan All Terms Summer, Fall and Spring

Graduates by College 1998-2008 by First Degree



***Minot State
University***

Faculty and Staff

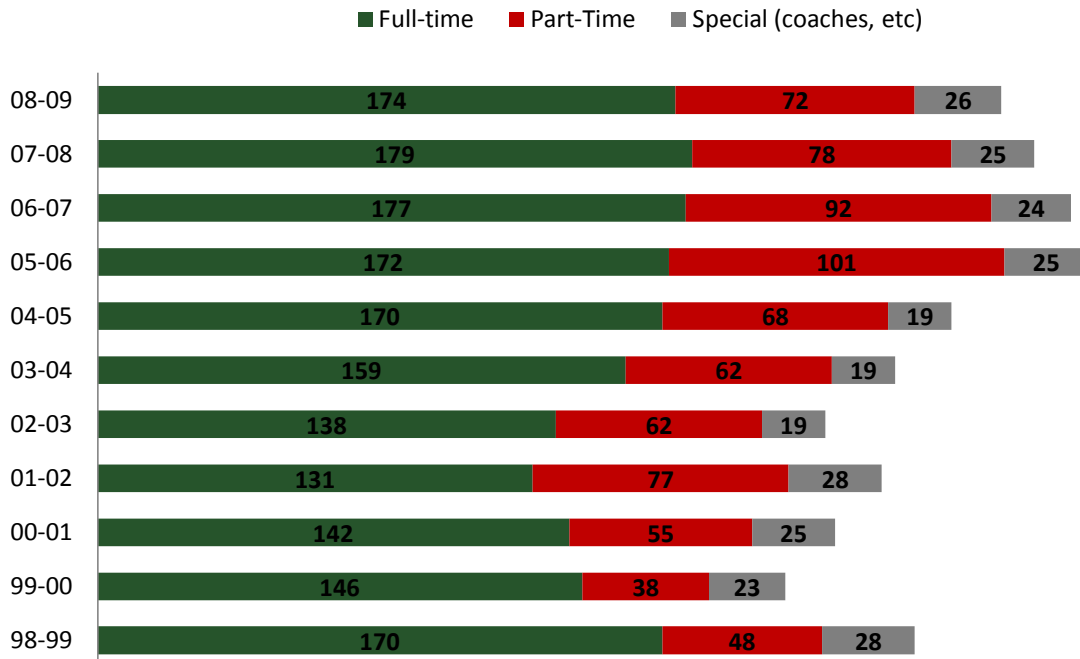
Minot State University
Faculty Status and Gender Distributions
1998-1999 through 2008-2009

	98-99	99-00	00-01	01-02	02-03	03-04	04-05	05-06*	06-07	07-08	08-09
Full-time	170	146	142	131	138	159	170	172	177	179	174
Male	97	86	82	74	79	86	85	88	90	89	82
Female	73	60	60	57	59	73	85	84	87	90	92
Part-Time	48	38	55	77	62	62	68	101	92	78	72
Male	15	18	25	38	24	23	28	43	37	28	27
Female	33	20	30	39	38	39	40	58	55	50	45
Special (coaches, etc)	28	23	25	28	19	19	19	25	24	25	26
Male	14	10	8	12	5	9	5	9	9	10	10
Female	14	13	17	16	14	10	14	14	15	15	16
Total	246	207	222	236	219	240	257	296	293	282	272
Male	126	114	115	124	108	118	118	140	136	127	119
Female	120	93	107	112	111	122	139	156	157	155	153

*The 2005 conversion of Peoplesoft may have affected duplicated numbers of individuals contracted in overload capacities as PT and FT employees. Effective 2006 PT faculty included individuals who are part-time benefited and/or part-time in an adjunct capacity.

Data Source: Minot State University Human Resource Office and annual MSU Fact Books.

Total Faculty by Year and Status



Minot State University
Average Faculty Salaries by Rank
1999-2008

Year	Professor	Associate Professor	Assistant Professor	Instructor	All Listed Ranks	Change
1998-99	\$55,762	\$42,449	\$37,708	\$32,487	\$42,162	8.3%
1999-00	\$57,680	\$44,230	\$38,453	\$32,403	\$43,192	2.4%
2000-01	\$56,964	\$45,414	\$39,777	\$34,698	\$43,784	1.4%
2001-02	\$57,072	\$46,162	\$40,460	\$36,713	\$44,975	2.7%
2002-03	\$57,576	\$47,860	\$41,837	\$37,635	\$46,046	2.3%
2003-04	\$58,190	\$48,077	\$42,238	\$37,231	\$46,479	0.93%
2004-05	\$61,576	\$48,727	\$43,423	\$39,608	\$48,334	4.0%
2005-06	63,351	51,518	\$44,503	\$37,786	\$49,254	0.2%
2006-07	64,871	51,888	45,812	34,368	47,756	-0.03
2007-08	65,615	54,956	48,298	36,994	50,310	5.35%
2008-09	68,133	57,199	50,974	36,141	53,112	5.57%

MSU Staff by Job Family & Gender Fall 2008

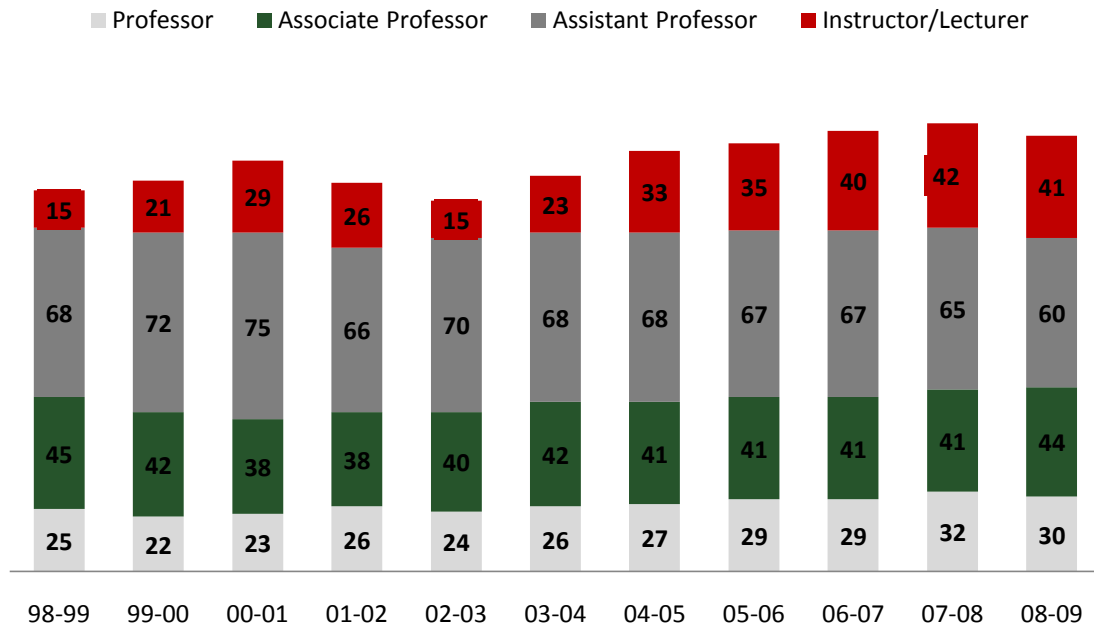
Job Family	Female	Male	Total
0000 Executive/Administrative	5	12	17
1000 Administrative/Managerial	3	2	5
3000 Professional	54	22	76
4000 Technical and Paraprofessional	28	4	32
5000 Office Support	55	0	55
6000 Crafts/Trades	3	16	19
7000 Services	5	16	21
Total	153	72	225

Data Source: Minot State University Human Resource Office and annual MSU Fact Books.

Full-time Faculty Rank and Gender Distribution 1998-1999 through 2008-2009

	98-99	99-00	00-01	01-02	02-03	03-04	04-05	05-06	06-07	07-08	08-09
Professor											
Male	22	22	19	21	19	20	20	23	24	26	24
Female	3	2	4	5	5	6	7	6	5	6	6
Total	25	22	23	26	24	26	27	29	29	32	30
Associate Professor											
Male	27	24	22	23	23	26	28	26	26	26	26
Female	18	18	16	15	17	16	13	15	15	15	18
Total	45	42	38	38	40	42	41	41	41	41	44
Assistant Professor											
Male	35	36	38	31	36	33	32	30	31	24	19
Female	33	36	37	35	34	35	36	37	36	41	41
Total	68	72	75	66	70	68	68	67	67	65	60
Instructor/Lecturer											
Male	7	8	10	11	4	7	9	10	9	13	13
Female	8	13	19	15	11	16	24	25	31	29	28
Total	15	21	29	26	15	23	33	35	40	42	41
Total	153	157	165	156	149	159	169	172	177	180	180

Data Source: Minot State University Human Resource Office and IPEDS data forms <http://surveys.nces.ed.gov/ipeds/>



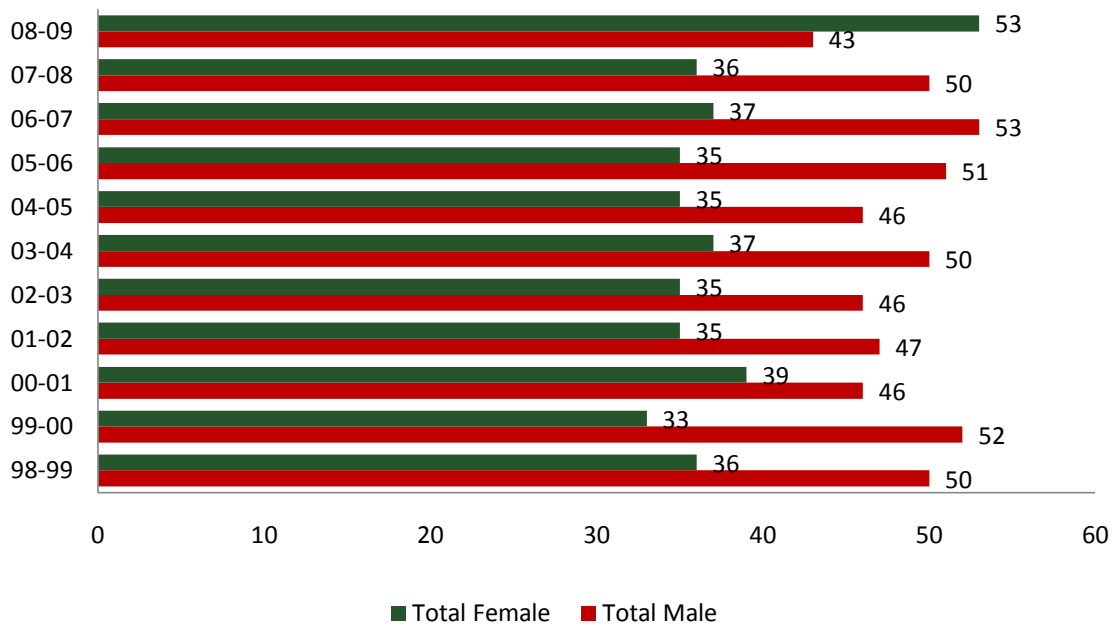
Data Source: Minot State University Human Resource Office and IPEDS data forms <http://surveys.nces.ed.gov/ipeds/>

Minot State University
Tenured Faculty: Rank and Gender
1998-1999 through 2008-2009

	98-99	99-00	00-01	01-02	02-03	03-04	04-05	05-06	06-07	07-08	08-09
Professor	22	22	22	21	20	25	23	28	28	29	28
Male	19	20	18	17	16	19	18	22	23	23	22
Female	3	2	4	4	4	6	5	6	5	6	6
Associate Professor	36	35	33	33	34	35	33	35	36	31	38
Male	21	21	19	20	20	22	20	24	23	20	23
Female	15	14	14	13	14	13	13	11	13	11	15
Assistant Professor	28	28	30	28	27	27	25	23	26	26	30
Male	10	11	9	10	10	9	8	5	7	7	8
Female	18	17	21	18	17	18	17	18	19	19	22
Total	86	85	85	82	81	87	81	86	90	86	96
Total Male	50	52	46	47	46	50	46	51	53	50	43
Total Female	36	33	39	35	35	37	35	35	37	36	53

Data Source: Minot State University Human Resource Office and IPEDS data forms <http://surveys.nces.ed.gov/ipeds/>.

Total Tenured Faculty by Year and Gender



Faculty Terminal Degree Totals

<u>Full- Time Faculty</u>		
Terminal Degrees	93	
Non-Terminal Degrees	79	
Unknown	2	
	174	53% of FT Faculty have Terminal Degrees
<u>Part-Time Faculty</u>		
Terminal Degrees	16	
Non-Terminal Degrees	67	
Unknown	1	
	84	19% of PT Faculty have Terminal Degrees

<u>College of Business</u>		
Terminal Degrees	12	
Non-Terminal Degrees	14	
Unknown	0	
	26	46% of FT Faculty Have Terminal Degrees
<u>College of Arts & Sciences</u>		
Terminal Degrees	55	
Non-Terminal Degrees	30	
Unknown	1	
	86	64% of FT Faculty Have Terminal Degrees
<u>College of Education and Health</u>		
Terminal Degrees	27	
Non-Terminal Degrees	32	
Unknown	0	
	59	45% of FT Faculty Have Terminal Degrees

Data Source: VPAA Office and Human Resources Office

Terminal Degrees include MFA degrees, First Professional, and Doctorate Degrees

***Minot State
University***

***Financial
Information***

Tuition and Fees Comparison

Tuition and Required Fees for Resident Undergraduate
A Regional Comparison ¹
2001-02 through 2007-08

Year	Minot State Variance to Regional Average	
	Dollars	Percent
2001-2002	-\$479	-15.7%
2002-2003	-\$500	-14.9%
2003-2004	-\$516	-13.8%
2004-2005	-\$395	-9.6%
2005-2006	-\$276	-6.3%
2006-2007	-\$112	-2.4%
2007-2008	-\$140	-2.9%

¹Regional averages include: CO, IA, KS, MN, MO, MT, NE, OK, SD, WI, and WY.

Data Source: *February 2008 NDUS Student Affordability Report.*

Tuition and Fees Compared to Household Income

Resident Undergraduate Tuition and Required Fees
As a percent of Median Household Income ^{1, 2}
2000-01 through 2007-08

Year	Minot State	
	Regional	ND
2000-2001	7.1%	7.4%
2001-2002	7.4%	7.2%
2002-2003	8.0%	7.9%
2003-2004	8.9%	9.0%
2004-2005	9.5%	9.2%
2005-2006	10.0%	10.4%
2006-2007	10.3%	10.6%
2007-2008	10.4%	11.6%

¹Tuition and Required Fees/median household income.

²Regional average includes: CO, IA, KS, MN, MO, MT, NE, OK, SD, WI, and WY.

Data Source: *February 2008 NDUS Student Affordability Report. And NDUS Accountability Board Level Report*

Minot State University—Cost per Student

General Fund and Total Fund Revenue per FTE Student: FY 2008

Calculation 1: Unrestricted

General Fund/FTE Student¹ \$ 5,143
 Total Fund/FTE Student² \$ 11,070

Calculation 2: Combined Unrestricted & Restricted

General Fund/FTE Student³ \$ 5,143
 Total Fund/FTE Student⁴ \$ 14,708

¹ unrestricted state transfers ÷ FTE students.

² Total unrestricted revenues + state transfers ÷ FTE students

³ Combined unrestricted and restricted state transfers ÷ FTE students

⁴ Combined unrestricted and restricted revenue + state transfers ÷ FTE students.

Data Source: NDUS Accountability Board Level Report- MSU Business Office Controller

Calculation (See above)		FY 2001	FY 2002	FY 2003	FY 2004	FY 2005	FY 2006	FY 2007
1	General Fund/FTE Student ¹	\$5,201	\$ 4,626	\$ 4,646	\$ 4,366	\$4,431	4,470	4,566
	Total Fund/FTE Student ²	\$10,683	\$ 8,891	\$ 9,138	\$ 9,269	\$5,467	9,992	10,699
2	General Fund/FTE Student ¹	\$ 5,319	\$ 4,626	\$ 4,646	\$ 4,366	\$4,431	4,470	4,566
	Total Fund/FTE Student ²	\$13,135	\$11,610	\$12,326	\$12,366	\$13,504	12,936	14,597

Administrative, Instructional, and Other Costs per Student

Administrative, Instructional, and Other Unrestricted
 Costs per FTE Student - FY 2008

Core Services¹ \$ 7,878
 Supporting Services & Student Aid² \$ 1,623
 Administration & Plant Services³ \$ 2,628
Total **\$12,129**

¹ Core Services: Total unrestricted E & G expenditures and mandatory transfers for instruction + research + public services ÷ FTE students.

² Support services and student aid: Total unrestricted E & G expenditures and mandatory transfers for academic support + student services + scholarships and fellowships ÷ FTE Students.

³ Administrative and physical plant: Total unrestricted E & G expenditures and mandatory transfers for institutional support + operation and maintenance of physical plant ÷ FTE students.

Data Sources: NDUS Accountability Reports- Board Level Data and MSU Business Office Controller

	FY 2001	FY 2002	FY 2003	FY 2004	FY 2005	FY 2006	FY 2007
Core Services	\$ 5,006	\$ 5,786	\$ 6,216	\$ 6,481	7,299	7,056	7,411
Supporting Services & Aid	\$ 1,600	\$ 2,017	\$ 2,094	\$ 1,887	1,346	1,426	1,366
Admin & Plant Services	\$ 1,876	\$ 1,555	\$ 1,684	\$ 1,298	2,251	2,301	2,507
Total	\$ 8,482	\$ 9,358	\$ 9,994	\$ 9,666	\$10,896	10,783	11,304

Minot State University
Percentage of Funding for Academic Support, Etc.

Percentage of Total Unrestricted Minot State Funding Used for Academic Support,
Student Services, and Scholarships and Fellowships FY 2008

Expenditures:

Academic Support	\$ 1,846,333
Student Services	\$ 2,702,711
Scholarships & Fellowships	<u>\$ 200,287</u>
	\$ 4,749,331

Revenues and state Transfers:

Unrestricted Revenue	\$ 40,035,024
Less: Auxiliary Revenue	<u>\$ (2,305,196)</u>
	\$40,729,282

	FY 2001	FY 2002	FY 2003	FY 2004	FY 2005	FY 2006	FY 2007
Academic Support	2,522,467	2,052,539	2,100,239	2,423,783	1,695,994	1,604,454	1,748,773
Student Services	1,265,913	1,758,533	1,691,520	1,755,802	1,788,474	2,262,487	2,135,318
Scholarships, etc.	251,809	1,779,228	2,359,079	1,572,952	397,359	466,682	361,740
Total	4,040,189	5,590,300	6,150,838	5,752,537	3,881,827	4,333,623	4,245,831
Unrestricted	6,975,149	32,182,264	36,213,841	37,703,239	38,947,126	39,263,382	44,695,653
Auxiliary Revenue	3,598,848	3,653,289	3,917,145	3,912,993	3,922,961	3,797,750	4,091,866
Total	23,376,301	28,528,975	32,296,696	33,790,246	35,790,260	35,465,632	40,603,787

Percentage of Minot State University Funding for Academic Support, Etc.

Percentage of Total Unrestricted Minot State Funding Used for Academic
Support, Student Services, and Scholarships and Fellowships FY 2008

Academic Support ¹	4%
Student Services ²	5%
Scholarships and Fellowships ³	<u>1%</u>
Total⁴	10%

¹ Total unrestricted expenditures for academic support ÷ total unrestricted revenues and auxiliary revenues.

² Total unrestricted expenditures for student services ÷ total unrestricted revenues and auxiliary revenues.

³ Total unrestricted expenditures for scholarships and fellowships ÷ total unrestricted revenues and state transfers – auxiliary revenues.

⁴ Total unrestricted expenditures for academic support + student services + scholarships and fellowships ÷ total unrestricted revenues and state transfers - auxiliary

Data Source: NDUS Accountability Board Level Reports-audited financial statements. Data provided by MSU Business Office.

Operating and Contributed Income Ratio

FY 2008

Unrestricted & Restricted Revenues

Revenues

Tuition and Fees	\$13,347,109
Federal grants and contracts	8,007,051
State grants and contracts	929,208
Private gifts, grants/contracts	1,709,350
Sales and services – Ed. Depts.	1,007,316
Investment & endowment income	613,456
Auxiliary enterprise	2,305,196
Other operating revenue	58,777
Total	\$ 27,987,463

Total Revenue & State Transfers	\$ 43,035,024
Operating and Contributed Income	\$ 27,987,463
Ratio	0.5:1

Data Source: NDUS Accountability Board Level Report and MSU Business Office Controller

	FY 2001	FY 2002	FY 2003	FY 2004	FY 2005	FY 2006	2007
Tuition and Fees	9,091,255	6,771,494	7,449,012	8,625,793	10,349,602	11,552,372	12,822,623
Federal grants & contracts	4,855,304	6,221,276	7,754,728	7,828,760	8,437,742	7,275,993	8,542,804
State grants and contracts	272,395	480,048	391,160	437,636	584,798	726,121	1,243,051
Private gifts, grants/contracts	827,337	836,011	1,219,368	1,175,615	1,379,857	943,896*	2,149,769
Sales and services – Ed. Depts.	764,747	1,135,641	1,510,864	2,034,927	1,162,785	867,379	1,053,816
Investment & endowment income	325,184	188,066	172,870	229,801	341,557	514,222	44,619
Auxiliary enterprise	3,598,848	3,653,289	3,917,145	3,912,993	3,922,964	3,797,750	4,091,866
Other operating revenue	n/a	74,075	149,203	149,203	(-10,661)	49,779	767,716
Total	19,735,070	19,359,900	22,564,350	24,389,793	26,168,644	25,727,512	30,715,264
Total Revenue & State	33,165,915	32,182,264	36,213,841	37,703,239	38,947,126	39,313,161**	44,695,653
Operating & Contributed Income Ratio	59.5%	60%	62%	65%	67%	65%***	69%

Data Source: NDUS Accountability Board Level Reports– original source -NDUS audited financial statements.

* Sum of Gifts and Non-Governmental Grants & Contracts

**Sum of Total and State Appropriations

*** Total /Total Revenue & State

**MSU Grants and Contracts
Fiscal Year 1998-1999 through 2007-2008**

Fiscal Year	Private	State/Federal	Total
1997-98*	\$359,344	\$1,740,190	\$2,099,534
1998-99*	\$302,828	\$1,967,057	\$2,269,855
1999-00*	\$464,637	\$2,155,558	\$2,620,195
2000-01*	\$397,128	\$2,327,182	\$2,724,310
2001-02*	\$210,432	\$3,168,837	\$3,379,269
2002-03*	\$266,766	\$3,829,069	\$4,095,862
2003-04**	\$102,901	\$7,648,922	\$7,751,823
2004-05***	\$195,667	\$6,222,835	\$6,418,502
2005-06	\$209,161	\$6,119,386	\$6,328,547
2006-07	\$94,670	\$4,762,446	\$4,857,116
2007-08	\$94,000	\$6,471,070	\$6,565,070

* Data represents funds expended by type and total.

**Data represents all funds awarded.

***Data represents funds awarded during the fiscal year. This calculation will be used in future fact books on grants/contract awards from 2004-05 forward.

**Combined Endowment Assets of
Minot State University and the
MSU Development Foundation
1999 – 2008**

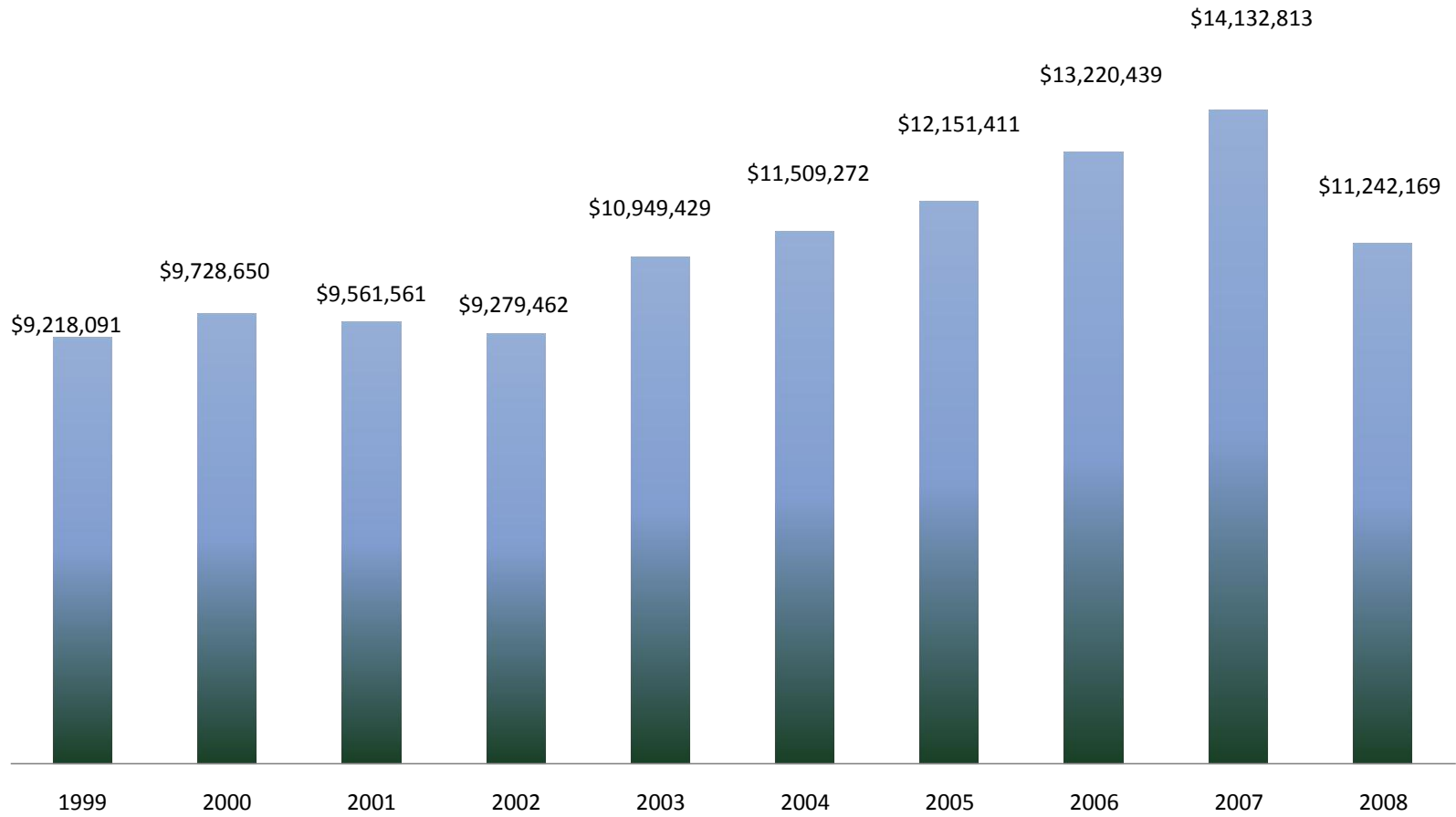
(Market Value)

Fiscal Year	*Amount	% Change
1999	\$9,218,091	---
2000	\$9,728,650	5.5%
2001	\$9,561,561	-1.7%
2002	\$9,279,462	-3.0%
2003	\$10,949,429	18%
2004	\$11,509,272	5.1%
2005	\$12,151,411	5.6%
2006	\$13,220,439	8.8%
2007	\$14,132,813	6.9%
2008	\$11,242,169	-20.45%

Data Source: [Percent Change Calculator](#) and NDUS Accountability Board Level Reports

*As reported in October

Combined Endowment Assets



Data Source: Minot State University Advancement Office and NDUS Accountability Board Level Reports (December)

***Minot State
University***

***Student Fees
and Financial Aid***

**MSU Tuition and Fees per Semester
2000-01 to 2008-09**

Undergraduate	01-02	02-03	03-04	*04-05	05-06	06-07	07-08	08-09	% Chg
Resident	1,276.75	1,402.64	1,614	1,856	2046	2245.90	2386.44	2521.80	5.6
Contiguous States and Provinces	1,557.25	1,695.64	1,955.25	2251	2,478.50	2718.90	2882.94	3044.30	5.6
Minnesota Reciprocity	1,411.75	1,590.14	1,811.50	2,046	2,202	2389.40	2514.94	2614.80	4.0
WUE**	1,838	1,947	2,296	2,646	2,911	3,192.40	3379.94	3566.80	5.5
Non-Resident	3,150.25	3,359.64	3,893.50	4,494.50	4,935	5,408.90	5707.44	6011.30	5.3

Graduate	2001-02	2002-03	2003-04	2004-05	2005-06	2006-07	2007-08	2008-09	% Chg
Resident	1,636.75	1,787.64	2,055	2,366	2,605	2,857.40	3028.44	3195.80	5.5
Contiguous States & Provinces	2,377.75	2,566.14	2,958	3,411	3,749.50	4,110.90	4344.44	4577.80	5.3
WUE**	2,378	2,524	2,958	3,411	3,750	4,110.90	4344.44	4577.80	5.3
Minnesota Reciprocity	2,037.75	2,302.14	2,638	3,023	3,228	3,493.40	3670.94	3804.80	3.6
Non-Resident	4,111.75	4,387.64	5,071	5,856	6,427.50	7,042.90	7422.94	7811.30	5.2

Percent Change Dale Gehring- Financial Aid Services

Tuitions & Fees are for on-campus courses. The tuition and fees charged for most on-campus courses cap at 12 credits. Distance Education courses do not cap at 12 credits, charges are calculated on all credits. Also, in addition to the tuition and fees listed above, all distance courses will be charged an additional fee.

Distance education courses are charged an additional access fee. The access fee is a per credit charge to a student to cover the added costs associated with delivery of a course. The fee varies from \$5.00 per credit for Bismarck courses to \$42.50 per credit for on-line courses. Undergraduates may take up to 18 credits before an additional fee is charged. Graduate credits are capped at 12 credits for the tuition noted above.

*The 2004-2007 tuition rates include the ConnectND fee.

A full-time student, for tuition purposes, is a person who is enrolled in 12 or more semester hours of credit. The cost of tuition and fees for part-time enrollments is prorated. Some distance education courses pay per credit. These courses are not part of the 12 credit cap for charges.

** Western Undergraduate Exchange Enrollment. In 2005-06, states that are a member of WUE include: Alaska, Arizona, California, Colorado, Hawaii, Idaho, Nevada, New Mexico, Oregon, Utah, Washington, and Wyoming. Montana is also a member of WUE, but Montana students receive the contiguous states tuition.

MSU Student Activity Fee Distribution: 2004–2009

The student activity fee is included in the amounts stated on the previous page. The per-semester fee for full-time students is separated into two portions: the University Fee and the Student Government Activity Fee. The University Fee supports activities that benefit the student body as a whole, while the Student Government Activity Fee goes toward supporting specific activities. The tables below provide a breakdown of the allocation of these fees. These are charged per semester.

University Fee	04-05	05-06	06-07	07-08	08-09
Student Center	7.50	7.50	7.50	7.350	7.50
Student Health	20.00	20.00	20.00	40.00	40.00
Gordon B. Olson Library	15.00	15.00	15.00	15.00	15.00
University endowment	1.50	1.50	1.50	1.50	1.50
Athletics	36.50	42.50	42.50	52.50	60.50
Total	80.50	86.50	86.50	86.50	124.50

Student Government Activity Fee	04-05	05-06	06-07	07-08	08-09
Art Gallery	1.75	1.93	2.90	2.90	2.90
Theatre Arts	2.61	2.61	2.61	2.61	2.61
Music	2.75	2.75	3.50	3.50	3.50
Student Tours	3.07	3.07	3.07	3.07	3.07
Student Government Association	16.60	16.60	16.60	21.00	27.00
Student Activities	8.20	8.20	10.00	15.00	25.00
Publications	8.08	8.08	10.08	10.08	10.08
KMSU	3.25	3.25	3.25	3.25	3.25
Placement	9.80	9.80	17.00	17.00	17.00
Fitness Center	0.00	5.00	25.00	25.00	25.00
Homecoming	0.00	4.00	4.00	6.00	9.00
Multicultural Center	2.00	2.00	2.00	4.00	4.00
Building Renovations	10.00	10.00	10.00	10.00	10.00
Orientation	2.00	2.00	2.00	0.00	0.00
Reserve	2.03	2.03	2.03	2.03	2.03
Student Clubs	0.00	2.00	2.00	2.00	5.00
Hockey Club	0.00	5.00	7.00	7.00	10.00
Mentoring	0.00	0.00	0.00	1.50	1.50
Tutoring	0.00	0.00	0.00	3.00	3.00
Beaver Athletic Band	0.00	0.00	0.00	0.00	2.50
Total	72.14	88.32	123.04	138.94	166.44

Data Source: Office of the Vice President for Student Services – VPSS Student Handbook

***Student Financial Aid: Requested/Awarded
Fiscal Years 1999-2000 through 2007-2008***

Fiscal Year	Financial Aid Applications	Financial Aid Awarded	Percent Awarded
1999-00	2682	2553	95%
2000-01	2451	2394	98%
2001-02	2459	2388	97%
2002-03	2355	2296	97%
2003-04	2647	2640	98%
2004-05	3244	2887	89%
2005-06	3518	2805	79.8%
2006-07*	4408	3916	88.4%
2007-08	3817	2669	69.9%

*2006-07 data represents all degree-seeking students

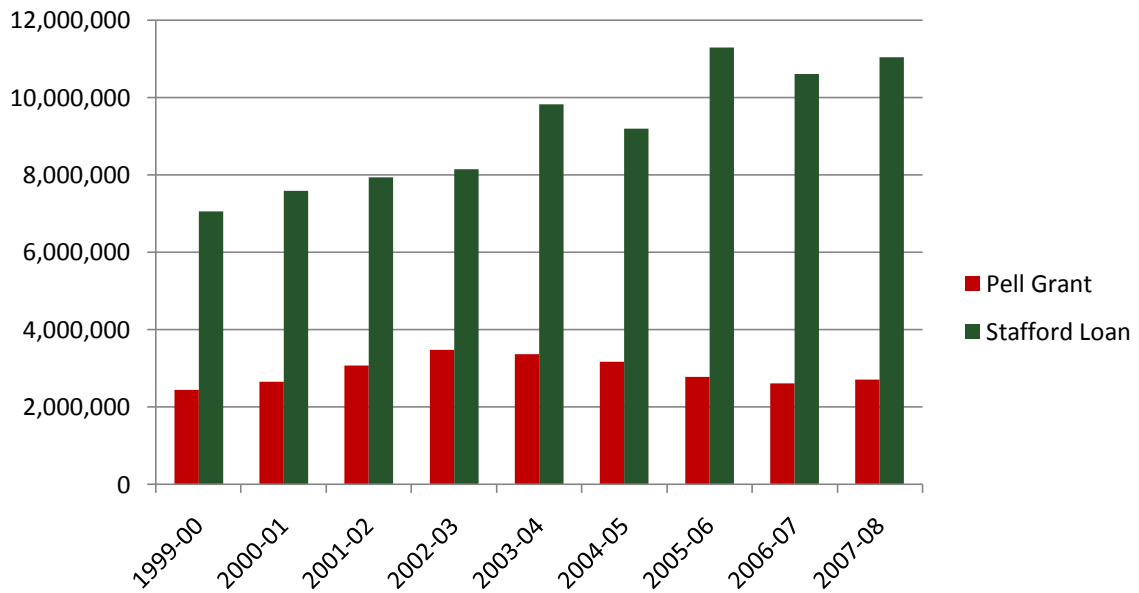
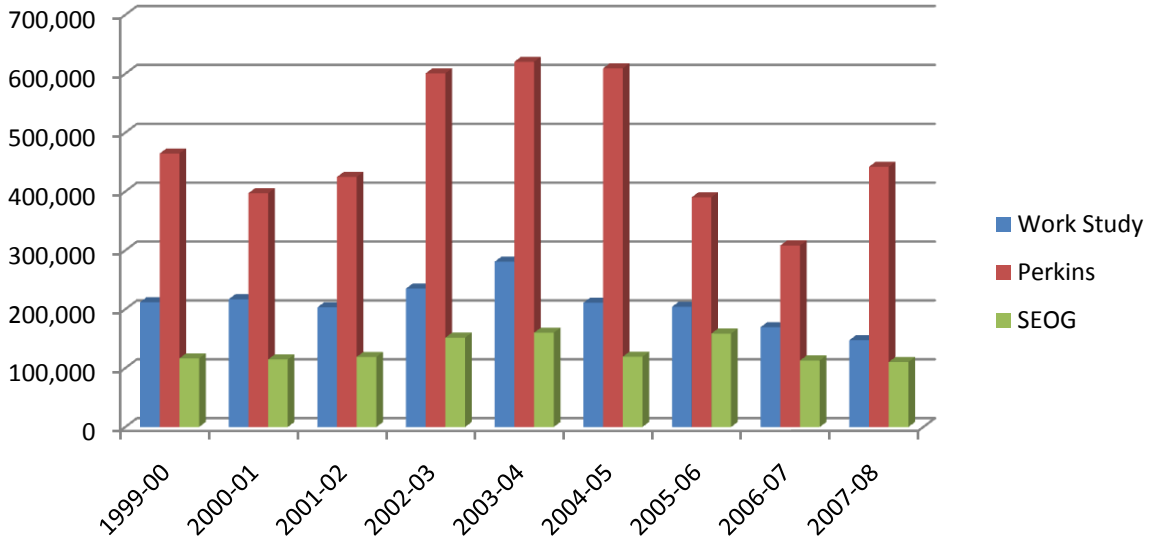
Financial Aid Office

Type of Aid and Dollar Amount by Year

Academic Year	Work Study	Perkins	SEOG	Pell Grant	Stafford Loan	Total
1999-00	212,062	464,597	116,571	2,451,964	7,061,669	10,306,863
2000-01	217,063	397,089	114,784	2,653,456	7,587,671	10,970,063
2001-02	203,240	424,820	119,090	3,082,967	7,946,557	11,776,674
2002-03	235,136	600,835	151,777	3,482,579	8,158,218	12,628,545
2003-04	280,767	620,393	160,088	3,373,066	9,837,158	14,271,472
2004-05	211,054	609,178	119,375	3,179,660	9,197,139	13,316,406
2005-06	204,128	390,183	158,731	2,778,715	11,300,779	14,832,536
2006-07	169,616	308,403	113,024	2,614,624	10,613,747	13,819,414
2007-08	147,415	441,995	110,400	2,709,891	11,054,729	14,464,420

Data Source: Minot State University Financial Aid Office and previously released MSU Fact Books.

Minot State University Financial Aid Trends 1999-2000 through 2007-2008



***Minot State
University
Information
Resources***

Data for the Gordon B. Olson Library obtained through the library.

MSU Library Holdings: 1999-2008

Item	1999	2000	2001	2002	2003	2004	2005	2006	2007	2008	
Books	164,265	168,097	170,576	173,655	175,470	178,983	182,832	185,804	189,159	188,158	
Periodicals	54,323	55,616	55,288	56,936	58,215	59,340	60,205	63,127	65,670	42,126	
Documents	161,512	166,823	172,896	176,752	177,772	182,146	185,370	188,633	191,775	181,113	
Microfilm	10,012	10,970	11,268	11,332	11,435	11,468	11,517	11,564	11,614	11,657	
Microfiche	630,483	629,142	658,714	668,720	676,273	698,389	706,507	709,999	714,277	711,859	
Subscriptions*	910	928	843	805	802	752	668	693	693	532	
Maps	114,830	116,151	117,964	119,432	120,837	121,559	122,350	123,173	123,914	124,519	
Non-Print Materials	12,810	13,172	13,392	13,625	13,743	14,835	15,185	15,487	16,007	16,335	
Disc Recordings	4,172	4,174	4,174	4,173	4,173	4,173	4,173	4,173	4,172	4172	
Cassettes	3,937	3,937	3,942	3,948	3,946	3,938	3,951	3,952	3,949	3949	
Videotapes	2,176	2,470	2,604	2,785	2,846	2,927	2,994	3,234	3,253	3267	
Software	72	80	90	94	96	100	104	103	96	116	
Compact Disks	1,528	1,586	1,657	1,698	1,757	1,853	2,003	2,080	2,359	2429	
DVD**	Not available							274	454	641	

Data Source: Sarah Henderson ~MSU Library *Current journals, serial, and newspaper subscriptions. ** Added in 2006

Library-use Figures 1999-2000 to 2006-2008

Year	1999-00	2000-01	2001-02	2002-03	2003-04	2004-05	2005-06	2006-07	2007-08
Materials Provided by Other Institutions	4,070	4,067	5,171	5,815	6,481	*6,233	7,594	4,547	4,667
Materials Requested by Other Institutions	4,635	4,798	4,461	4,590	4,685	*3,789	4,461	4,593	4,316

Data Source: Sarah Henderson ~MSU Library * Correction by library from data reported in 2005

Type of Material Ordered

	1998-99	1999-00	2000-01	2001-02	2002-03	2003-04	2004-05	2005-06	2006-07	2007-08	% Chg
Books	962	1,262	1,281	1,446	1,526	1,373	1,437	2,246	1,861	2894	55.5
Articles	3,276	3,056	2,623	3,078	3,558	4,147	2,746	3,045	2,686	1773	-33.9

<http://www.csgnetwork.com/percentchangeCalc.html> Percentage Change Calculator

Data Source: Sarah Henderson ~MSU Library

Access of Web Pages Fiscal Year 2002-2003 to 2007-2008

	2002-03	2003-04	2004-05	2005-06	2006-07	2007-08	% Chg
Course Page	28,129	22,095	16,825	21,710	21,055	22,946	8.9
Eres Home Page	69,041	40,847	22,525	28,579	23,307	24,798	6.3

<http://www.csgnetwork.com/percentchangeCalc.html> Percentage Change Calculator

Data Source: Sarah Henderson ~MSU Library

Electronic Reserve 2008

E-Reserve Item	2002	2003	2004	2005	2006	2007	2008	% Chg
Faculty with accounts on E-Reserve	98	107	111	140	158	128	151	17.9
Courses with pages on E-Reserve	291	336	407	417	424	244	359	47.1
Documents on E-Reserve	2,957	3,722	4,540	5,945	7,085	1,847		

Data Source: Sarah Henderson ~MSU Library <http://www.csgnetwork.com/percentchangeCalc.html> Percentage Change Calculator

Data for 2006 is as of September 2006

MSU Book Expenditures

Year	1998-99	1999-00	2000-01	2001-02	2002-03	2003-04	2004-05	2005-06	2006-07	2007-08
Book Expenditure	\$109,256.25	\$103,264.20	\$83,462.90	\$91,303.35	\$42,977.27	\$78,832.53	\$105,871.33	\$96,666.05	\$97,099.08	60,283.14
Items Ordered	2,483	2,593	2,278	2,341	1,311	2,514	3,849	2,600	2,945	1,228
Average Cost/Book	\$44.00	\$39.82	\$36.64	\$39.00	\$32.78	\$31.36	\$27.51	\$37.18	\$32.97	\$49.09

Data Source: Sarah Henderson ~MSU Library

Circulation of Library Materials

	1998-99	1999-00	2000-01	2001-02	2002-03	2003-04	2004-05	2005-06	2006-07	2007-08
Number	35,179	32,507	31,025	29,264	29,487	30,521	30,468	23,377	21,111	18,919
% Chg	-25.0	-7.6	-4.6	-5.7	0.76	3.5	-0.2	-23.3	-9.7	-10.3

Data Source: Sarah Henderson ~MSU Library <http://www.csgnetwork.com/percentchange.html> Percentage Change Calculator

Circulation of Material by User Class

User	2000-01	2001-02	2002-03	2003-04	2004-05	2005-06	2006-07	2007-08
Students	21,220	19,510	19,629	21,022	21,076	15,257	14,058	13,334
Faculty	6,296	6,461	6,707	6,279	6,447	6,216	5,672	4,266
Local Patron	1,540	1,322	1,261	1,108	1,001	1,022	469	639
Interlibrary Loan			Not reported				912	680

Data Source: Sarah Henderson ~MSU Library

Information Technology Central (ITC)

Information Technology Central (ITC) is a strategic necessity for Minot State University. Fundamental tools (e-mail, calendaring, file sharing, Web access, etc.) are important for administrative, academic, research functions, and day-to-day operations. High-speed networking, high performance computing, collaboration voice and data tools, and other advanced technology services create innovative opportunities for the institution.

A reliable and redundant network infrastructure is the backbone on which all other services depend. ITC infrastructure refers to the entire technology architecture that supports student, faculty, and staff computing activities on campus and from a distance. Components that make up the current technology architecture include, but are not limited to, switched and routed network backbone, wireless Internet access, production support servers and appliances (email/calendaring—and soon to be voicemail--integration, file and print, backup, Web, network support, directory services, authentication, firewall, filtering/bandwidth management, intrusion detection, patch management, antivirus gateway, spam filtering, remote access control, rapid application deployment, network/application resource monitoring, and secure network access).

The migration from a 100 Mbps dual-ring fiber backbone began in 2001 and was completed in phases over the next four years. Prior to the upgrade, FDDI edge switches provided 10 Mbps desktop connections to campus labs, residence halls, and faculty and administrative offices. Today, all edge switches support 10/100 Mbps and, in some cases, 10/100/1000 Mbps to the desktop.

The network core infrastructure is the key component to support expanding technology development across campus. The wired network needs to remain a reliable, robust, and secure transport system to meet the needs of the campus community and support access to the latest voice, data, and video technology. Currently, the campus backbone supports full layer three gigabit Ethernet with plans to upgrade cores switches to 10 gigabit Ethernet summer 2009.

MSU participates in STAGENet, the state-funded wide area network (WAN) consortium. Early WAN connectivity was limited to one T1 capable of 1.544 Mbps. The T1 connection was upgraded to a fractional DS3 (10 Mbps) in 2000. In early 2007, the campus WAN connection was upgraded from a DS3 (45 Mbps) to a full Gigabit Ethernet optical ring on the state network.

An Asynchronous DSL (ADSL) connection provides Internet access to the MSU's Education Center and computer lab located at Minot Air Force Base. This lab supports courses offered through the Center for Extended Learning.

A critical component of the current and future technology infrastructure is security. In the past, accesses to computing and network resources were maintained in a relatively controlled environment with minimal remote or online access. Making information available over the network has increased the risk of unauthorized access or inappropriate use of information. Data security discussions are ongoing and measures have been implemented to secure data, especially with regard to the campus document imaging system. ImageNow has alleviated the time-consuming inefficiencies of manually filing and retrieving documents for the Financial Aid Office, Records Office, and Enrollment Management.

User access via login and password will be required on the wireless network by fall semester 2009. The campus ID card system is designed to simplify access to services, events, and secure locations throughout campus. Security cameras are strategically located in campus buildings and outside in view of open parking lots, etc., to maximize visual security for all campus constituents. Other security and data protection initiatives in place relate to regular patching of critical systems, robust antivirus and SPAM filtering, and reliable archives (real-time offsite storage, disk-to-disk-to-tape) of important data in the event of hardware or application failure. The Notifind emergency notification system is in place effective fall 2008 to ensure timely notifications to all faculty, staff, and students in the event of an emergency.

Information technology is an important component of the instructional and learning experience and is an integral to research, teaching, and learning. MSU supports over 350 computers in twelve general access and teaching labs on campus and at the Minot Air Force Base Education Center. Software for campus labs is distributed and maintained from a common set of software images using Altiris, which provides timely distribution of software images, rapid install application packages, and critical Windows and antivirus signature file updates. Numerous niche labs exist in support of specialized training for students (arts, sciences, humanities, nursing, education, business, etc.). Internet capable learning spaces and kiosks are strategically located across campus to "informally" engage students in learning opportunities. Computer systems equipped with assistive technologies including Jaws, ZoomText, 21-inch monitors, monitor lifts, etc., are available in open-access computer labs for persons with disabilities. Each student has a campus Live@Edu email account, hosted by Microsoft, to receive official campus communications regarding Add/Drop Deadlines, Registration Information, Financial Aid, Campus Events, Emergency Notices and more. The Live@Edu account provides access to additional services including online space for file sharing and collaboration.

Students who attend Minot State University join a community of people devoted to creating and sharing information—activities that can be enhanced by information technology. Whether a full- or part-time student, living on campus or commuting, technology is available that allows for communication, personal development, and getting together (in person and virtually). BlackBoard (formerly WebCT) CE 8, the campus course management system since 1997, supports over 200 Web-based courses as well as “blended courses” in which faculty enhance their face-to-face classes with interactive online learning experiences. Six degree programs are currently available totally online. Faculty training and support are available from the Office of Instructional Technology, which formed in 2000.

Collaborative teaching tools provide an interactive and engaged teaching and learning environment for faculty and students. Microsoft Sharepoint Services creates a single access point for faculty and students to engage in document sharing and team-based learning. Other Web-based collaboration tools are available to students and faculty including blogs and wiki sites. Maple T.A. complements the online course management system by providing Web-based testing and assessment targeted for mathematics, science, or any course that requires mathematics. An Adobe Connect meeting server is available for use by faculty and administrators to bring real-world functionality to online meetings and provide faculty and students the opportunity to communicate and collaborate instantly.

A majority of the classrooms on campus are equipped with permanently installed video projection systems and other technology enhancements. Classroom technology, whether permanently installed or delivered on demand, is available in all academic buildings. Five classroom locations have videoconferencing capability, including one room equipped with high definition. A full-time IVN coordinator provides the scheduling and daily support for all video-enabled classrooms.

IT staff register and certify the required wiring and equipment for new video-enhanced classrooms. Videoconferencing software is available for both PC and Mac computers to allow users to join a traditional IVN class in session from their home or office, thereby, bridging the “on site” requirement gap that serves as an obstacle to some.

Centralized IT staff provides support for a broad range of technology-enhanced services for faculty, staff and students. Increased availability of and access to computing resources requires equally robust support services that make it easier for all students to succeed. MSU recognizes the strong connection between the quality of education and the quality of technology services available to students. ITC is a centrally located service organization, comprised of a director, security coordinator, systems administrator, network operations manager, campus lab/desktop coordinator, electronics specialist, Help Desk coordinator, and Web designer/developer. In addition to working in their areas of specialization, all technicians provide desktop support and actively test and evaluate new server- and network-based technologies to achieve increased flexibility and improve system responsiveness.

The Help Desk is a significant component of ITC. The office is open six days per week and is the University's first line of support relative to computer software and hardware issues, the use of instructional technology, access to server support services and resolution of network-related problems. Help Desk services for students include hardware and software installation, equipment checkout (laptop, desktop, digital camera, projector, mini hub, etc.), removal of spyware and computer viruses, file storage, Web space, software downloads, etc. McAfee and other software are available to all students free of charge. Academic pricing for many Microsoft and Adobe/Macromedia software titles is available through a partnership with Barnes & Noble and Journeymen. Wired and wireless Internet access is available in the residence halls and across campus free of charge. There are over 1200 active data ports and 50 wireless access points.

MSU has implemented numerous information services and systems over the past decade, transforming the way the campus engages in educational and business processes. Active-Directory authentication streamlines the process for rolling out new and innovative services. The Microsoft Exchange Email/Calendar system continues to be a successful implementation at MSU. Voice integration will begin summer 2009 with the deployment of unified messaging (voice and e-mail messaging integration) for faculty and staff. Later phases will include roll out of unified communications to include desktop sharing, audio, video and Web conferencing and instant messaging.

Data Source: Cathy Horvath~ Director of IT/ Kris Warmoth ~Dean of CEL

Filename: factbook_2008_030209.doc

Rev: 030209

Data Sources

Data utilized to compile information for the Minot State University 2008 Fact Book include the following sources:

- Academic and Institutional Projects, Minot State University
- Advancement and Student Affairs, Minot State University
- Student Affairs, Minot State University
- Alumni Office, Minot State University
- Business Office, Minot State University
- Center for Extended Learning, Minot State University
- Computer Center, Minot State University
- Gordon B. Olson Library, Minot State University
- Grants and Contracts Office, Minot State University
- Information Technology Center, Minot State University
- MSU Fact Books – 1998 through 2007
- MSU Integrated Postsecondary Education Data Statistics Reports – Registrar's Office
- MSU Third Week Reports, September 2008
- North Dakota University System Office, Bismarck, ND
- President's Office, Minot State University
- Registrar's Office, Minot State University
- Undergraduate Catalog, Minot State University
- United States Department of Education Institute of Education Sciences, National Center for Education Statistics, Integrated Postsecondary Education Data System (IPEDS)

Glossary

The following definitions are taken directly from the U.S. Department of Education's NCES/IPEDS web site. For more definitions, use IPEDS web site: <http://nces.ed.gov/ipeds/glossary/index.asp?charindex>

Degree: An award conferred by a college, university, or other postsecondary education institution as official recognition for the successful completion of a program of studies.

First-year: A student who has completed less than the equivalent of 1 full year of undergraduate work; that is, less than 30 semester hours (in a 120-hour degree program) or less than 900 contact hours.

Freshman: A first-year undergraduate student.

Full-time Equivalent: A measurement equal to one student enrolled full-time for one academic year. Total FTE enrollment includes full-time plus the calculated equivalent of the part-time enrollment. The full-time equivalent of the part-time students can be estimated using different factors depending on the type and control of institution and level of student.

Full-time Student: Undergraduate—a student enrolled for 12 or more semester credits, or 12 or more quarter credits, or 24 or more contact hours a week each term. Graduate—a student enrolled for 9 or more semester credits, or 9 or more quarter credits, or a student involved in thesis or dissertation preparation that is considered full-time by the institution.

Graduate: A student who holds a bachelor's or first-professional degree, or equivalent, and is taking courses at the post-baccalaureate level. These students may or may not be enrolled in graduate programs.

Graduation Rate: The rate required for disclosure and/or reporting purposes under Student Right-to-Know policy. This rate is calculated as the total number of completers within 150% of normal time divided by the revised cohort minus any allowable exclusion.

Retention Rate: A measure of the rate at which students persist in their educational program at an institution, expressed as a percentage. For four-year institutions, this is the percentage of first-time bachelors (or equivalent) degree-seeking undergraduates from the previous fall who are again enrolled in the current fall. For all other institutions this is the percentage of first-time degree/certificate-seeking students from the previous fall who either re-enrolled or successfully completed their program by the current fall.

Undergraduate: A student enrolled in a 4- or 5-year bachelor's degree program, an associate's degree program, or a vocational or technical program below the baccalaureate.