

Minot State University

500 University Avenue West
Minot, North Dakota 58707

2007 Fact Book

Acknowledgements: The Academic Projects and Research Office would like to extend a heartfelt thank you to personnel in the following offices who supplied data and information for the 2007 Fact Book:

- Academic Affairs Office
 - Student Affairs
- North Dakota University System
 - Gordon B. Olson Library
- Center for Extended Learning
 - Registrar's Office
- MSU Advancement Office
 - Human Resources Office
- Administration & Finance Office
 - The MSU Graduate School

Preface

The Academic Projects and Research Office of Minot State University is pleased to present the 2007 Fact Book. This is an annual and cumulative production providing an ongoing view of trends and documents areas of growth and development, diversity, and challenge.

Patricia J. Hubel, MS

Cari A. Olson, MS- Academic & Institutional Projects, Coordinator

2007 Fact Book Highlights

Student Enrollment

Faculty Trends

Degree Highlights 2007

MSU Finance

Table of Contents

Acknowledgments	i
Preface & Fact Book 2007 Highlights	ii
Table of Contents	iii
Accrediting Agencies	1
Administration	2
Board of Regents Executive Committee	3
MSU Alumni Association Board of Directors and Members	3
MSU Development Foundation Board of Directors and Members	4
NDUS Administrative Officers.....	5
Minot State University Organizational Chart.....	6
Vice President of Academic Affairs Organization Chart.....	7
MSU Administrative Offices	8-9
MSU Student Information	10
North Dakota University System Fall Enrollment 1997-2007	11
Enrollment by Classification and Gender 2007	12
Student Enrollment Highlights 2005-2007.....	13
Student Enrollment Highlights: FTE/Total 1997-2007	14
Fall Enrollment – Headcount 1997-2007	15
Head Count Enrollment/Full-Time Equivalent, Headcount by Status/Year 1997-2007 ..	16
Full-Time Undergraduates by Status 1997-2007.....	17
Part-Time Undergraduate Enrollment 1997-2007	18
Total Undergraduate 1997-07 and Total Graduates 1997-07.....	19
Enrollment by Gender 1997-2007.....	20
Full- and Part-Time Graduate and Undergraduate by Gender 2006-07	21
Enrollment Totals by Ethnicity 1997-2007	22
Enrollment by Residency 1997-2007	23
New Students, Transfers, and OTAS 1997-2007	24
OTAS Full- and Part-Time by Gender and Totals 1997-2007	25
Map of Enrolled Students by North Dakota County Fall 2007	26
Enrollment by North Dakota County 1997-2007	27
Map of Freshman Students by North Dakota County Fall 2007	28
Freshman by North Dakota County 1997-2007.....	29
Enrolled Students by State of Origin Fall 2004 through 2007	30
Enrolled Students by State of Origin 1997-2007.....	31
International Student Enrollment & Classification Fall 2007	32
Center for Extended Learning Headcounts Fall 2001-2007.....	33-34
New Freshman Applications & Enrollment Patterns 1999-2007	35
Retention of New Freshmen 1998-2006	35
New Transfer Applications & Enrollment Patterns 1999-2007	35
Institutional Average GPA Undergraduate and Graduate 1998-2007	36
Comparison of ACT Averages	36
Student Housing by Residence and Average Costs of Residence 2002-2007	37
Residence Hall Disciplinary Actions 2000 - 2007.....	38
Minot State University Crime Statistics – Calendar Year 1999 – 2007	38

Majors and Degree Information.....	39
Declared Majors College of Arts & Sciences 1998 – 2007	40-41
Declared Majors College of Education and Health Sciences 1998 – 2007	41
Declared Majors College of Business and The Graduate School 1998 – 2007	42
Degrees Conferred College of Arts and Sciences 1998-2007	43-44
Second Majors Reported to IPEDS College of Arts and Sciences 2005-2007	45
Degrees Conferred College of Education & Health Science 1998-2007.....	46
Second Majors Reported to IPEDS College of Education & Health Science 2005-07....	46
Degrees Conferred College of Business 1998-2007	47
Second Majors Reported to IPEDS College of Business 2005-07	47
Certificate Programs 2000-2007	47
Graduate Programs and Graduate Certificate 1998-2007	48
Degrees Conferred Undergraduate and Graduate 1998-2007 by First Majors	49
Undergraduate Degree by Degree Type by First Majors 2003-2007	50
Graduates by College 1998-2007 by First Major	50
MSU Faculty and Staff Information	51
Faculty Status & Gender Distribution 1998-2007	52
Total Faculty by Year and Status (full- or part-time and non-teaching).....	52
MSU Average Faculty Salaries by Rank 1998-2007	53
MSU Staff by Job Family and Gender Fall 2007	53
Full-Time Faculty by Rank and Gender Distribution 1998-2007	54
MSU Tenured Faculty by Rank and Gender 1998-2007	55
Headcount of Faculty in FT and PT categories by Highest Degree	56
MSU Financial Information.....	57
Tuition & Fee Comparison 1997-98 to 2004-05	58
Tuition & Fee Compared to Household Income 1997-98 to 2005-06.....	58
MSU Cost per Student - FY 2001 to FY 2006	59
Administrational, Instructional, & Other Costs per Student - FY 2001 to FY 2006.....	59
Percentage of MSU funding for Academic Support, Etc - FY 2001 to FY 2006.	60
Operating and Contributed Income Ratio - FY 2001 to FY 2006.....	61
Grants & Contracts - 1997-98 to 2006-07	62
Combined Endowment Assets 1999 to 2007.....	63
Student Fees & Financial Aid.....	64
Tuition & Fees, Semester Rates – 2001-02 through 2006-07	65
Student Activity Fee Distribution - 2006-07	66
Student Financial Aid Requested/Awarded and Type of Aid and Dollar Amount	67
Financial Aid Trends 1999-00 through 2005-06	68
Information Resources.....	69
Library Holdings 1998 to 2007.....	70
Library Use Figures and Types of Materials Ordered 1999 to 2007.....	70-71
Access of Web Pages 2002 to 2007	71
Electronic Reserves 2002 – 2006, Book Expenditures 1998 – 2007.....	72
Circulation of Library Materials 2000 to 2007.....	72
Circulation of Material by User Class 2000 to 2007	72
Information Technology Central Report	73-75
Sources	76
Glossary	77

Accrediting Agencies

- ✓ **The Higher Learning Commission,
North Central Association of Colleges and Schools**
30 N. LaSalle St., Ste 2400, Chicago, IL (800) 621-7440
- ✓ **National Council for Accreditation of Teacher Education**
2010 Massachusetts Avenue NW, Suite 500, Washington DC 20036-1023
- ✓ **National Association of Schools of Music**
11250 Roger Bacon Drive, Suite 21, Reston, VA 20190-5248
- ✓ **Council on Education of the Deaf**
Kent State University, Kent, OH 44242-0001
- ✓ **Council on Academic Accreditation of the American Speech-Language-
Hearing Association** 10801 Rockville Pike, Rockville, MD 20852-3279
- ✓ **Council on Social Work Education – Baccalaureate level**
1600 Duke Street, Alexandria, VA 22314-3421
- ✓ **International Assembly for Collegiate Business Education**
P.O. Box 25217, Overland Park, Kansas 66225, (913) 631-3009
- ✓ **National League for Nursing Accrediting Commission, Inc.**
Broadway 33rd Floor, New York, NY 10006
- ✓ **National Association of School Psychologists**
PO Box 791089, Baltimore, MD 21279-1089
- ✓ **North Dakota Board of Nursing**
919 7th Street, Suite 504, Bismarck, ND 58504-5881

***Minot State
University
Administration***

**Board of Regents
Executive Committee**

Executive Chair -----	Don Hummel
Past Executive Chair -----	Tim Mihalick
MSU President -----	David Fuller
Treasurer -----	Ron Dorn
Secretary -----	Marv Semrau
Chair Elect -----	Kathy Aas
Member at Large -----	Grace Fisher

**MSU Alumni Association
Board of Directors**

Executive Committee

President-----	Darwin Langseth
Past President-----	Verla Rostad
President-Elect -----	Brenda Foster
VP for Promotions-----	Ryan Hertz
VP for Events-----	Verla Rostad
VP for Outreach-----	Linda Christianson
Director of Annual Giving & Alumni Relations -----	Tawnya Bernsdorf
MSU President -----	David Fuller

Members

Robert Anderson	Darwin Langseth	Deb Schultz
Jennifer Aspaas	DelRae Muggerud	Jan Shipman
Leslie Barney	Trisha Nelson	Amy Simons
Randy Burckhard	Dale A. Olson	Ellen Simmons
Linda Christianson	Diana Olson	Angela Zerr
Kristi Chole	Lisa M. Olson	
Brenda Foster	Tonya Pearson	
Ryan Hertz	Verla Rostad	

MSU Development Foundation

Board of Directors

Executive Director----- Marv Semrau
President----- Rich Campbell
Vice President----- Jon Backes
Treasurer ----- Ron Dorn
Investment Advisory Committee ----- Eric Clausen
Special Gifts Committee ----- Vacant
Development Strategies Committee----- Doris Slaaten
MSU President ----- David Fuller

Members

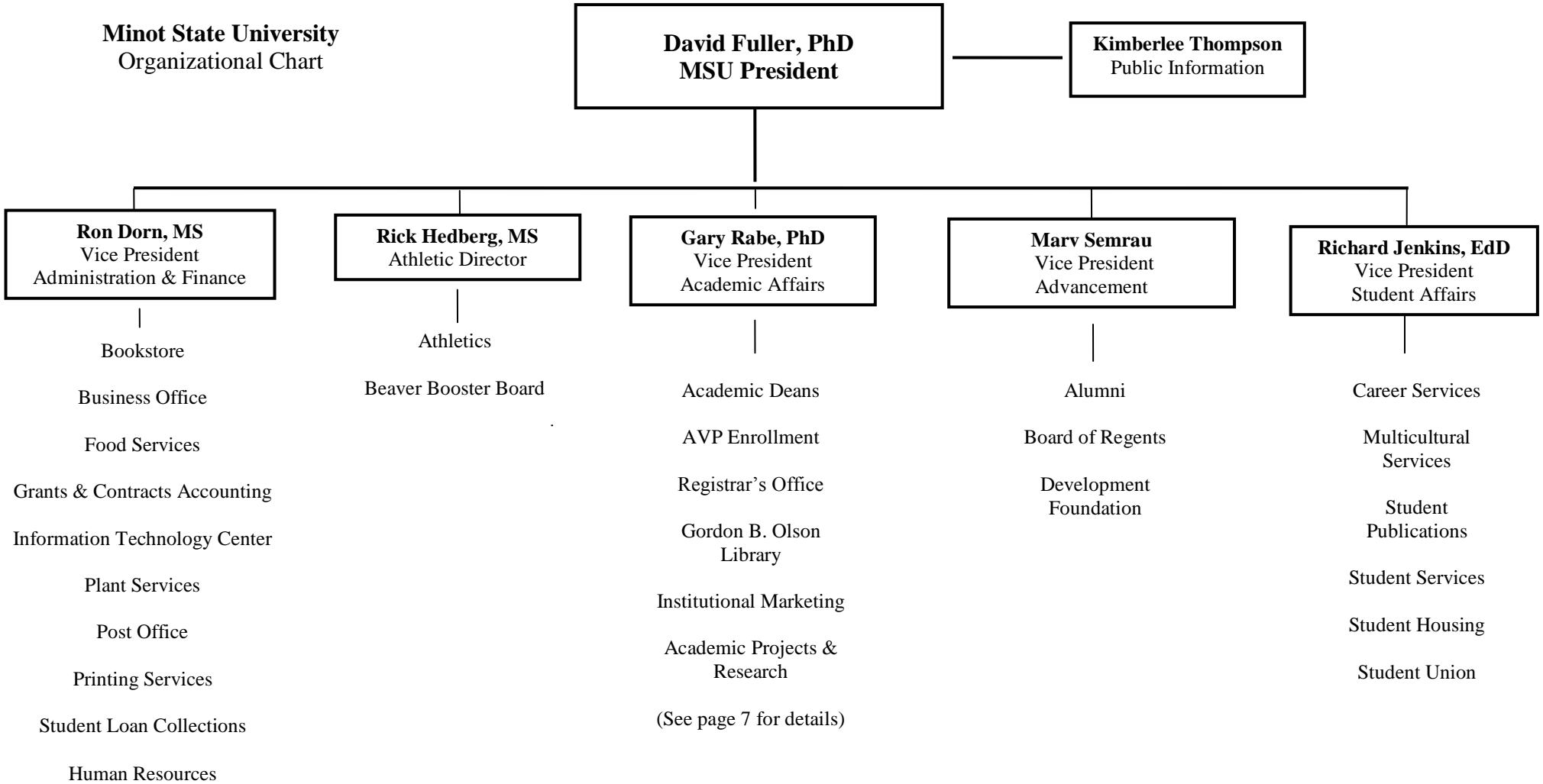
Jon Backes	Ron Dorn	Darwin Langseth
Mike Berg	David Fuller	Maynard Sandberg
Diane Bryantt	Langer Gokey	Doris Slaaten
Rich Campbell	Don Hummel	Myron Thompson
Eric Clausen	Alan Kurth	Bruce Walker

North Dakota University System

Chancellor ----- William G. Goetz
Vice Chancellor for Academic and Student Affairs ----- Michel Hillman
Vice Chancellor for Administrative Affairs ----- Laura Glatt
Director of Finance ----- Cathy McDonald
Academic Affairs Associate and Director of Research ----- Julie Schepp
Director of Financial Aid and Federal Relations Coordinator ----- Peggy Wipf
NDUS Chief Information Officer ----- Randall Thursby
General Counsel ----- Pat Seaworth
State Approving Agency Dir/Coordinator Multicultural Education -Rhonda Schauer
VC for Strategic Planning & Executive Director/CTEC ----- Marsha Krotseng
Director of Articulation & Transfer ----- Philip Parnell
Distance Education Coordinator ----- Bob Larson
Public Affairs Director ----- Debra Anderson
Director of Financial Reporting ----- Darci Trendera
FINDET Director ----- Michelle Olsen

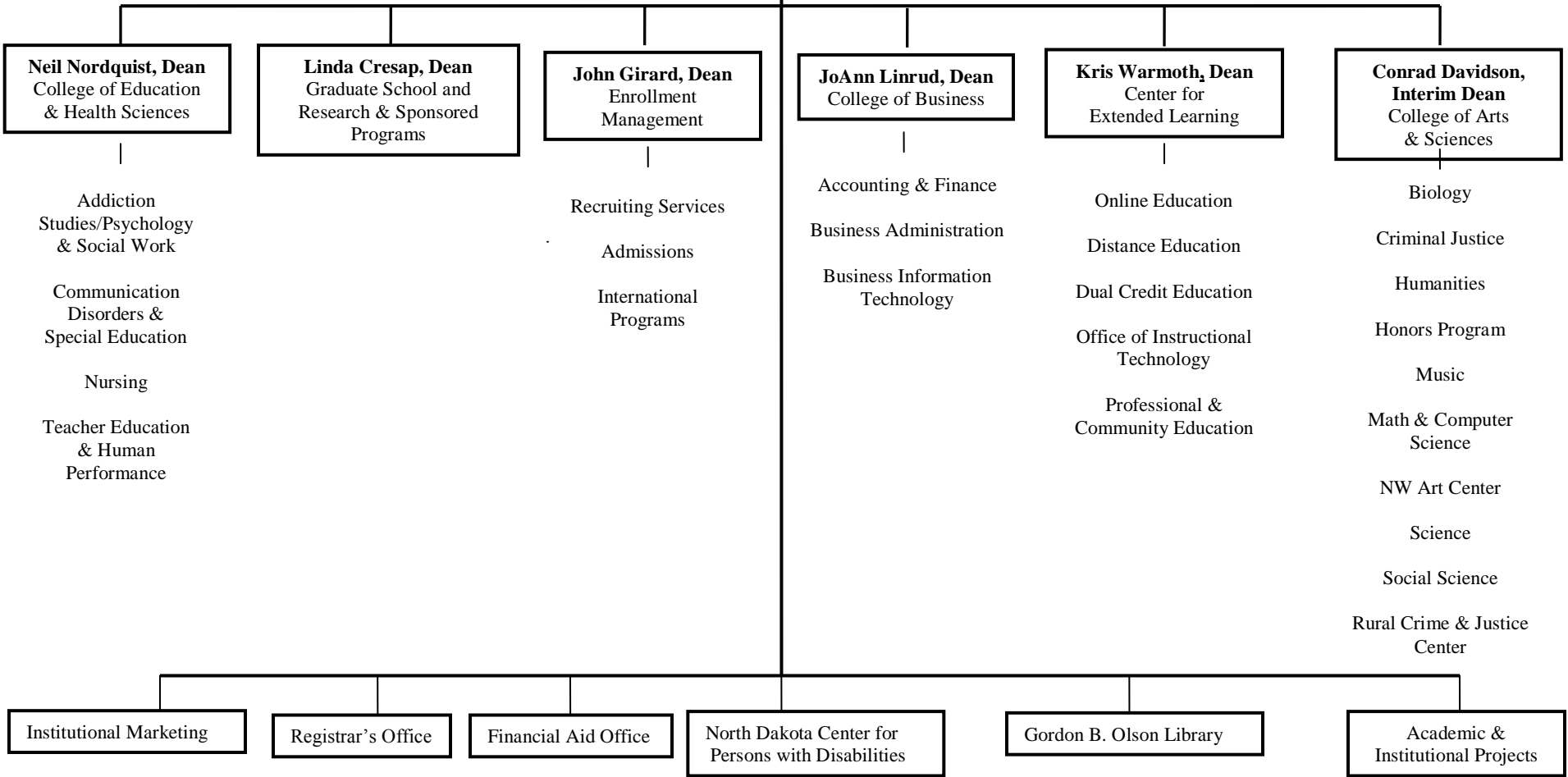
Data Source: Accessed from <http://ndus.edu/services/default.asp?ID=292>, October 9, 2007.

Minot State University
Organizational Chart



Minot State University
Academic Affairs Organizational Chart

Gary Rabe
Vice President
Academic Affairs



Administrative Offices

Academic Affairs

Vice President for Academic Affairs----- Gary Rabe
Executive Director, ND Center for Persons with Disabilities ----- Bryce Fifield
Director, Financial Aid ----- Dale Gehring
Director, Library ----- Sheila Collins
Registrar, Registrar's Office----- Tania Balas
Director, Enrollment Management ----- John Girard
Coordinator, Academic Projects & Research ----- Patricia Hubel

College of Arts and Sciences

Interim Dean ----- Conrad Davidson
Chair, Division of Humanities ----- Linda Olson
Interim Chair, Department of Mathematics & Computer Science ----- Selmer Moen
Chair, Division of Music ----- Sandy Starr
Chair, Department of Science ----- John Webster
Chair, Department of Biology ----- Christopher Keller
Chair, Division of Social Science----- Patricia Lomire
Chair, Department of Criminal Justice ----- William Archambeault
Director, Honors Program ----- Lynne Rumney
Director, Northwest Arts Center ----- Avis Veikley
Exec. Director, Rural Crime and Justice Center ----- Rodney Hair

College of Business

Dean ----- Joann Linrud
Chair, Department of Accounting & Finance ----- Jay Wahlund
Chair, Department of Business Information Technology ----- Thomas Seymour
Chair, Business Administration ----- Mike Duffy

College of Education and Health Sciences

Dean ----- Neil Nordquist
Chair, Department of Communication Disorders & Special Education ---- Thomas Linares
Chair, Department of Teacher Education & Human Performance ----- Deb Jensen
Coordinator, Master of Education Programs ----- Deb Jensen
Coordinator, Elementary Education Program ----- Lisa Borden-King
Coordinator, Physical Education and Human Performance Programs ----- David Rochholz
Coordinator, Coordinator, Teacher Education Core ----- Rebecca Barcomb
Director, Advisement & Field Placement ----- Elaine Larson
Chair, Department of Addiction Studies/Psych/Social Work----- Donald Burke
Director, School Psychology ----- Casey Coleman
Director, Addiction Studies----- Vicki Michels
Director, Social Work ----- Charlene Bruley
Chair, Department of Nursing----- Kelly Schmidt

Administrative Offices

Graduate School and Research & Sponsored Programs

Dean.....Linda Cresap
Assistant to the Dean of the Graduate School.....Margaret Coxwell

Student Affairs

VP for Student Affair ----- Richard Jenkins
Director, Multicultural Support Services ----- Wylie Hammond
Director, Student Health Center----- Caren Barnett
Director, Student Life----- Lisa Eriksmoen
Director, Student Union ----- Leon Perzinski
Director, Career Services, Enrollment Services ----- Lynda Bertsch
Coordinator, Campus Activities & Coordinator, Residence Life ---- Ann Rivera
Coordinator, Disability Services ----- Evelyn Klimpel
Student Publications ----- Frank McCahill
Physician's Assistant----- Kristen Schoen-Bosey
Counselor, Student Development----- Nancy Mickelson
Coordinator, Fitness Center----- Paul Brekke

Administration & Finance

Vice President for Administration and Finance ----- Ron Dorn
Controller ----- Jonelle Watson
Director Plant Services ----- Roger Kluck
Director, Printing Services ----- Sandy Nordstrom
Director, Student Union ----- Leon Perzinski
Director, Information Technology Center----- Cathy Horvath
Manager, Bookstore----- Sandra Foley

University Athletics

Director, Athletics ----- Rick Hedberg
Head Women's Basketball----- Sheila Green Gerding
Head Men's Basketball ----- Mike Hultz
Head Volleyball----- Johnna Lewis
Head Cross Country----- Stu Melby
Head Football ----- Paul Rudolph
Head Softball ----- Bill Triplett
Head Baseball ----- Brock Wepler

***Minot State
University***

***Student
Information***

**North Dakota University System
Fall Enrollment by Headcount 1997-2007**

Institution	1997	1998	1999	2000	2001	2002	2003	2004	2005	2006	2007 ¹
Bismarck State College	2,481	2,594	2,743	2,744	3,044	3,168	3,430	3,546	3,370	3,477	3,591
Dickinson State University	1,736	1,800	1,867	2,012	2,101	2,326	2,461	2,479	2,516	2,572	2,670
Lake Region State College	738	826	805	902	1,308	1,340	1,473	1,464	1,471	1,508	1,520
Mayville State University	705	740	851	776	755	746	817	897	912	832	769
Minot State Bottineau	421	447	508	451	526	609	620	602	523	605	637
Minot State University	3,294	3,156	3,155	3,081	3,515	3,625	3,825	3,851	3,798	3,712	3,424
ND State College of Science	2,542	2,469	2,345	2,425	2,292	2,439	2,468	2,481	1,852	2,490	2,417
North Dakota State University	9,408	9,536	9,638	9,894	10,538	11,146	11,623	12,026	12,099	12,258	12,527
University of North Dakota	10,363	10,369	10,590	11,031	11,764	12,423	13,034	13,187	12,954	12,834	12,559
Valley City State University	1,054	1,081	1,077	1,090	1,005	1,022	998	944	1,035	1,037	982
Williston State College	788	674	714	687	748	770	871	937	947	912	731
Total	33,350	33,692	34,293	35,093	37,596	39,614	41,620	42,414	42,082	42,237	41,827

Data Source: North Dakota University System. Headcount is the total number of students enrolled regardless of the number of credit hours. NDUS reports the headcount as the number of students enrolled on the fifteenth day of classes in the term.

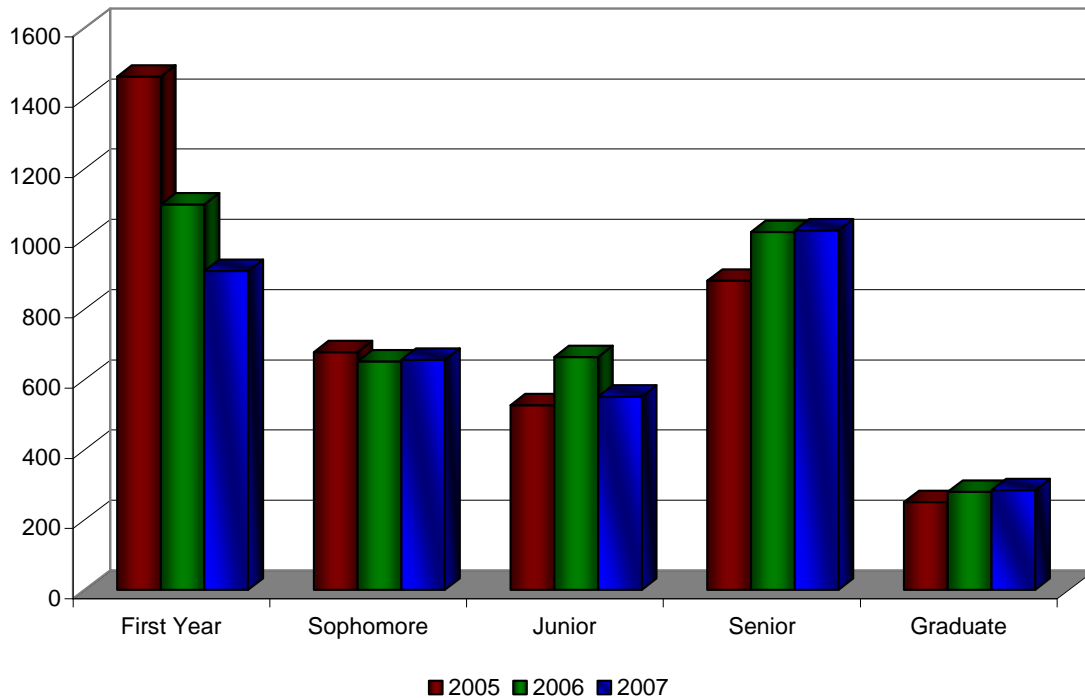
¹ "Enrollment at some institutions includes students who were registered, but had not made payment or been granted an extension based on documented good cause as of the census date. This includes 24 students at NDSU, 40 students at UND, 71 students at NDSCS and 239 students at LRSC for a total of 374 students." (Creating a University System for the 21st Century, 2007 Fall Enrollments, November 2007, p. 1)

**Enrollment by Classification & Gender Fall 2007
Headcount 2005, 2006, 2007**

	Male			Female			Total		
	2005	2006	2007	2005	2006	2007	2005	2006	2007
Undergraduate									
First Year	571	478	388	891	618	521	1462	1098*	909
Sophomore	267	227	239	410	424	417	677	651	656
Junior	193	252	181	334	412	370	527	664	551
Senior	297	344	345	584	676	679	881	1020	1024
2005 data reflects a change in university software to PeopleSoft. It does not distinguish UG Special. Students in this classification are now calculated in the senior total.									
Total Undergraduate	1328	1301	1153	2219	2130	1987	3547	3433*	3140
Graduate	55	57	57	196	222	227	251	279	284
MSU Totals	1383	1358	1210	2415	2352	2214	3798	3712*	3424

* Totals include 2 freshmen who did report gender. Data from 2005 was initial year of PeopleSoft data.

Total Students by Academic Status 2005-2007



Minot State University Enrollment Highlights

Fall 2007 to Fall 2006 Data

	Head Count			Full-time			Part Time			Total Scheduled Cr Hr		
	2006	2007	%	2006	2007	%	2006	2007	%	2006	2007	%
Freshmen												
Male	478	388	-18.8	283	238	-15.9	195	150	-23.1	4972	4217	-15.1
Female	618	521	-15.7	371	304	-18.1	247	217	-12.1	6576	5547.5	-15.6
Unknown	2	0	-100	1	0	-100	1	0	-100	13	0	-100
Total	1098	909	-17.2	655	542	-17.3	443	367	-17.2	11561	9764.5	-15.5
Sophomore												
Male	227	239	5.3	195	202	3.6	32	37	15.6	3085	3179	3.0
Female	424	417	-1.7	326	332	1.8	98	85	-13.3	5518.5	5590.5	1.3
Total	651	656	-0.8	521	534	2.5	130	122	-6.2	8603	8769.5	1.9
Junior												
Male	252	181	-28.2	206	144	-30.1	46	37	-19.6	3346	2430	-27.4
Female	412	370	-10.2	323	281	-13.0	89	89	0.0	5434	4809	-11.5
Total	664	551	-17.0	529	425	-19.7	135	126	-6.7	8780.5	7239	-17.6
Senior												
Male	344	345	0.3	244	239	-2.0	100	106	6.0	4226	4171.5	-1.3
Female	676	679	0.4	490	487	-0.6	186	192	3.2	8244	8219.5	-0.3
Total	1020	1024	0.4	734	726	-1.1	286	298	4.2	12470	12391	-0.6
Total Undergraduates												
Male	1301	1153	-11.4	928	823	-11.3	373	330	-11.5	15629	13997.5	-10.4
Female	2130	1987	-6.7	1510	1404	-7.0	620	583	-6.0	25772.5	24166.5	-6.2
Unknown	2	0	-100	1	0	-100	1	0	-100	13	0	-100
Total	3433	3140	-8.5	2439	2227	-8.7	994	913	-8.1	41414.5	38164	-7.8
Total Graduate												
Male	57	57	0.0	21	24	14.3	36	33	-8.3	412	452	9.7
Female	222	227	2.3	80	107	33.8	142	120	-15.5	1591	1771	9.2
Total	279	284	1.8	101	131	29.7	178	153	-14.0	2003	2223	11.0
Total Minot State University												
Male	1358	1210	-10.9	949	847	-10.7	409	363	-11.2	16041	13997.5	-12.7
Female	2352	2214	-5.9	1590	1511	-5.0	762	703	-7.7	27363.5	24166.5	-11.7
Unknown	2	0	-100	1	0	-100	1	0	-100	13	0	-100
Total	3712	3424	-7.8	2540	2358	-7.2	1172	1066	-9.0	43417.5	40387	-7.0

* **FTE/Total** refers to Full-time Equivalent of Total Credit Hour Production (Total Undergraduate credit hours divided by 16 or Total Graduate credit hours divided by 12). "Total credit hours" is the number of credit hours the full-time and part-time students enrolled in.

FTE Numbers were calculated by dividing total credit hours from first table by 15 for undergraduates and by 12 for graduates. Prior to 2006, the calculation was 16 for undergraduates and 9 graduates.

Minot State University
Student Enrollment Highlights: FTE/Total*
1997 - 2005

	1997	1998	1999	2000	2001	2002	2003	2004	2005
Undergraduates	2633	2471	2466	2366	2614	2669	2697	2683	2679
Graduates	94	126	122	125	125	120	142	161	205
Total	2727	2587	2588	2491	2739	2789	2839	2844	2884
Undergraduates									
Male	1011	951	958	893	976	981	1012	1006	999
Female	1622	1520	1508	1473	1638	1688	1685	1677	1680
Graduates									
Male	19	16	16	22	30	27	27	27	50
Female	75	110	106	103	95	93	115	134	155

1997-2005: FTE calculation is based upon 16 credit hours for full-time undergraduate and 9 credit hours per graduate student. Note the 2005 Fact Book indicates graduate FTE as being 12 credit/term; however, these prior calculations were made on 9 credit hours.

In 2006, the FTE calculation was changed. The calculations are now based upon 15 credit hours for full-time undergraduate students and 12 credit hours for graduate students.

2006-2007	2006 Fall Semester			2007 Fall Semester		
	06 FT + FTE of Part Time	Total Scheduled Credit Hours	FTE of Total Credit Hours	07 FT + FTE of Part Time	Total Scheduled Credit Hours	FTE of Total Credit Hours
Freshmen	788.54	11,561.00	770.75	664.26	9,764.5	650.96
Sophomore	583.14	8,603.50	573.57	588.19	8,769.5	584.62
Junior	594.21	8,780.50	585.37	485.73	7,239	482.6
Senior	851.13	12,470.00	831.33	851.06	12,391	826.07
Total Undergrad.	2,817.02	41,415.00	2,761.02	2,589.24	38,164	2,544.25
Graduate						
Graduate	168.75	2,003.00	166.92	187.74	2,223	185.24
Institutional Total FTE	2,985.77	43,418.00	2,927.91	2,776.98	40,387.00	2,729.49

**MSU Fall Enrollment – Headcount
1997 through 2007**

	1997	1998	1999	2000	2001	2002	2003	2004	2005	2006	2007	06-07 %Chg
Undergraduates	3120	2979	2982	2907	3326	3425	3593	3576	3547	3433	3140	-8.5
Graduates	174	177	173	174	189	200	231	275	251	279	284	1.8
Total Enrollment	3294	3156	3155	3081	3515	3625	3825	3851	3798	3712*	3424	-7.8
Undergraduate Students												
Male Full-time	1041	953	962	890	932	946	944	929	927	928	823	-11.3
Female Full-time	1601	1485	1450	1408	1564	1592	1568	1537	1546	1510	1404	-7.0
Male Part-Time	151	202	177	197	323	307	427	425	401	373	330	-11.5
Female Part Time	327	339	393	412	507	580	654	685	673	620	583	-6.0
Unknown	0	0	0	0	0	0	0	0	0	2	0	-100
Graduate Students												
Male Full-time	9	5	6	10	8	5	6	5	28	21	24	14.3
Female Full-time	39	50	48	52	49	42	52	50	84	80	107	33.8
Male Part Time	24	22	21	28	42	45	48	44	27	36	33	-8.3
Female Part Time	102	100	98	84	90	108	125	176	112	142	120	-15.5

Data Source: Annual Third Week Report, Minot State University Records Office, Legacy (1997-04) and PeopleSoft (2005 -) data.
Headcount indicates all students enrolled regardless of the number of credit hours for which they are enrolled (NDUS)
* Includes 2 classified as unknown (1 full-time and 1 part time)

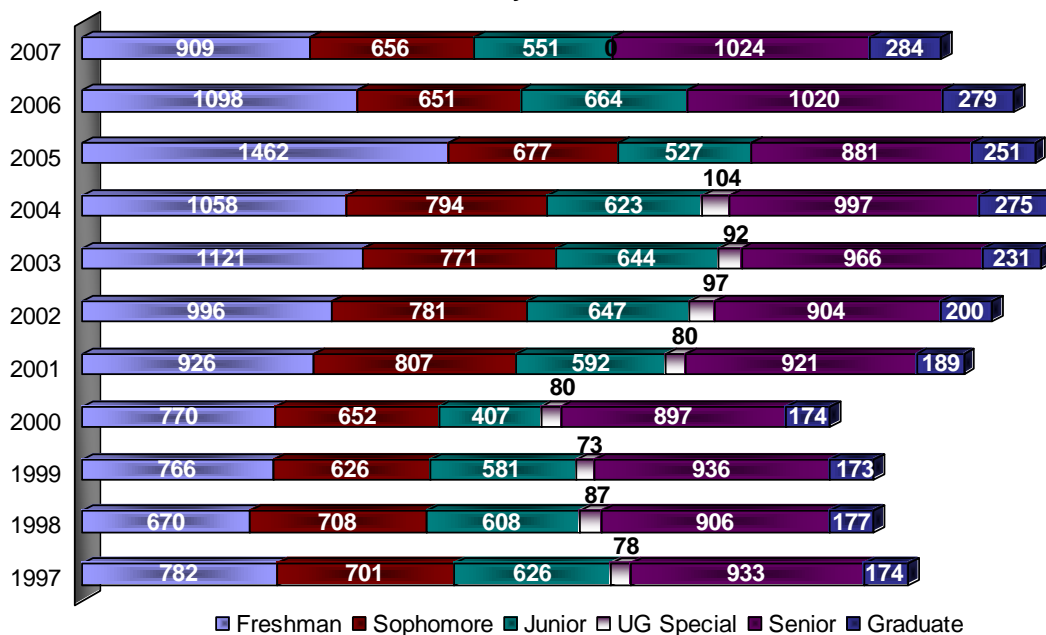
MSU Headcount (HC) and Full-time Equivalent (FTE) 1997-2007

Graduate and Undergraduate Combined

Year	Headcount	% Change	FTE*	% Change
1997	3294	----	2727	----
1998	3156	-4.2	2597	-4.8
1999	3155	0.0	2588	-0.3
2000	3081	-2.3	2491	-3.7
2001	3515	14.1	2739	10.0
2002	3625	3.1	2789	1.8
2003	3825	5.5	2839	1.8
2004	3851	0.7	2844	0.2
2005	3798	-0.8	2884	1.4
New FTE formula initiated in 2006				
2006	3712	-2.3	2928	n/a
2007	3424	-7.8	2730	-6.8%

*FTE of total credit hours (graduate and undergraduate combined).
Head count includes all students enrolled –full- or part-time.

Headcount by Status and Year

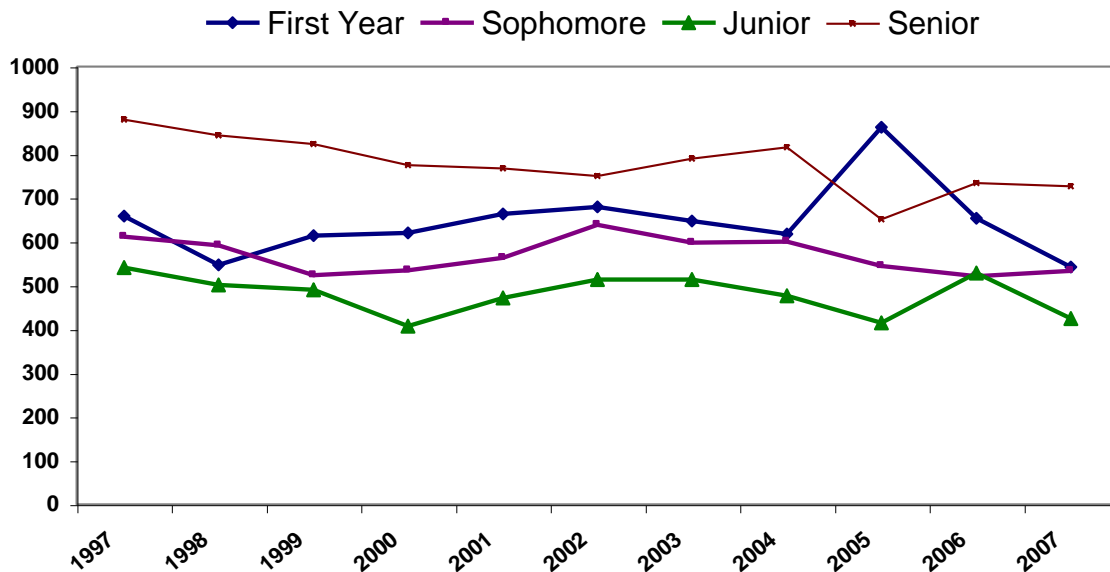


MSU Full-time Undergraduates by Status 1997-2007

	1997	1998	1999	2000	2001	2002	2003	2004	2005	2006	2007
First Year	658	547	614	620	663	680	647	617	862	654	542
Male	272	236	249	263	261	287	271	251	339	283	238
Female	386	311	365	357	402	393	376	366	523	371	304
Sophomore	612	592	523	535	563	639	598	600	545	521	534
Male	234	233	217	211	256	243	215	249	223	195	202
Female	378	359	306	324	307	396	383	351	322	326	332
Junior	541	501	490	407	471	513	513	476	415	529	425
Male	221	200	180	149	159	188	193	161	154	206	144
Female	320	301	310	258	312	325	320	315	261	323	281
Senior	783	753	747	697	705	662	721	730	651	734	726
Male	295	269	303	253	245	217	255	255	211	244	239
Female	488	484	444	444	460	445	466	475	440	490	487
UG Special	48	45	38	39	31	44	34	43	0	0	0
Male	19	15	13	14	11	11	10	13	Status not included in PeopleSoft.		
Female	29	30	25	25	20	33	24	30			

Undergraduate Special (UG Special) refers to an individual who has previously earned a bachelor's degree and is taking additional undergraduate coursework. PeopleSoft includes these students in Senior Status.

Total Full-Time Students



Note: Undergrad special category was added to the senior category for this graphic for 1997 to 2004.

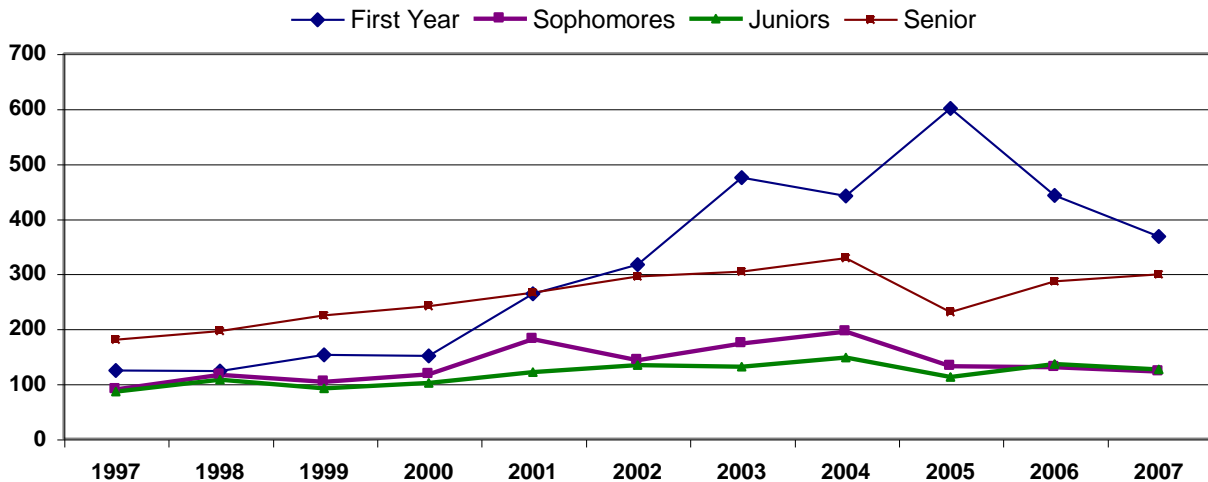
MSU Part-Time Undergraduates by Status - 1997-2007

	1997	1998	1999	2000	2001	2002	2003	2004	2005	2006	2007
First Year	124	123	152	150	263	316	474	441	600	442	367
Male	36	44	49	60	122	119	226	198	232	195	150
Female	88	79	103	90	141	197	248	243	368	247	217
Sophomores	89	116	103	117	181	142	173	194	132	130	122
Male	36	42	34	31	73	55	65	68	44	32	37
Female	53	74	69	86	108	87	108	126	88	98	85
Juniors	85	107	91	101	121	134	131	147	112	135	126
Male	26	34	22	26	37	36	46	47	39	46	37
Female	59	73	69	75	84	98	85	100	73	89	89
Senior	150	153	189	200	216	242	245	267	230	286	298
Male	44	68	63	66	73	78	73	95	86	100	106
Female	106	85	126	134	143	164	172	172	144	186	192
Undergrad. Special	30	42	35	41	49	53	58	61	See note.		
Male	9	14	9	14	18	19	17	17			
Female	21	28	26	27	31	34	41	44			

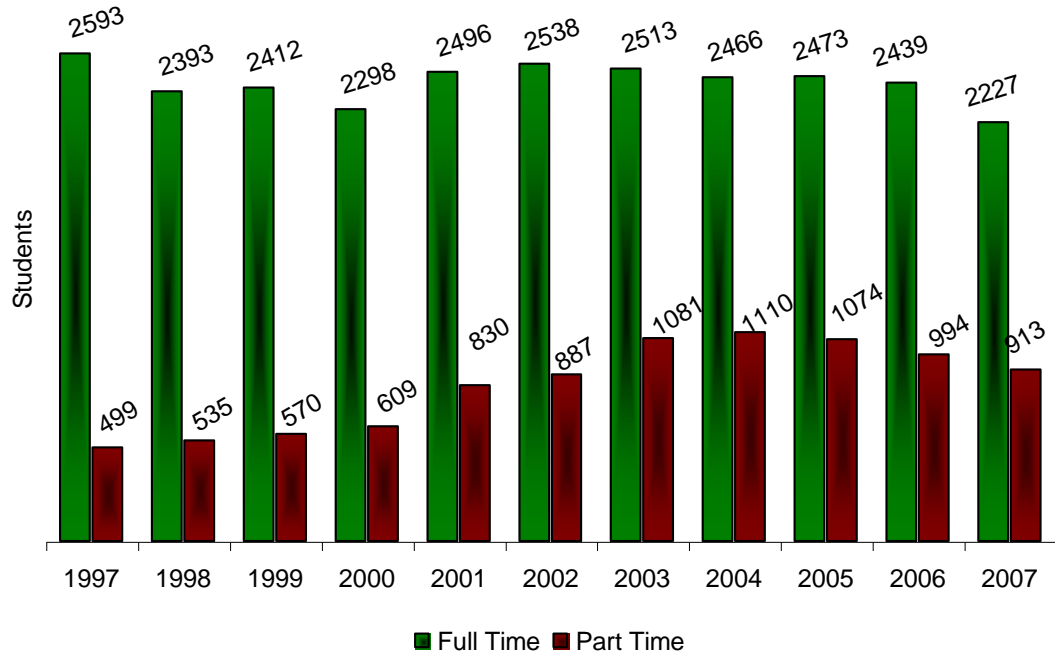
Note: Undergraduate Special (UG Special) refers to an individual who has previously earned a bachelor's degree and is taking additional undergraduate coursework. ***Note:** PeopleSoft software initiated in 2005. Undergraduate Special category no longer exists. These individuals are now included as Seniors. To compare data for the Seniors in 2005, the 2004 number used is the Senior + UG Special.

Note: Undergraduate Special numbers were added to Senior Status for this chart.

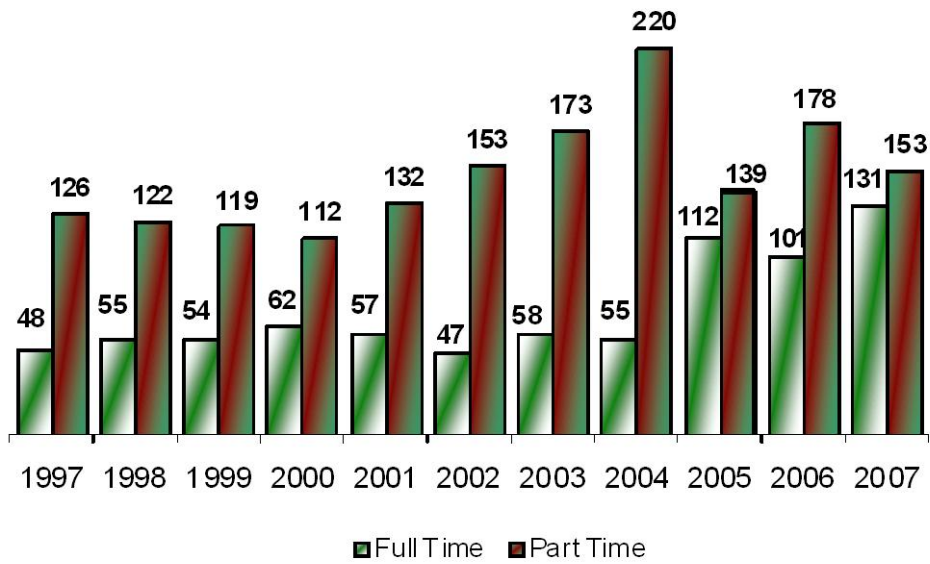
Total Part Time Students



MSU Enrollment 1997 - 2007
Total Full-time/Part Time Status
Undergraduate Students

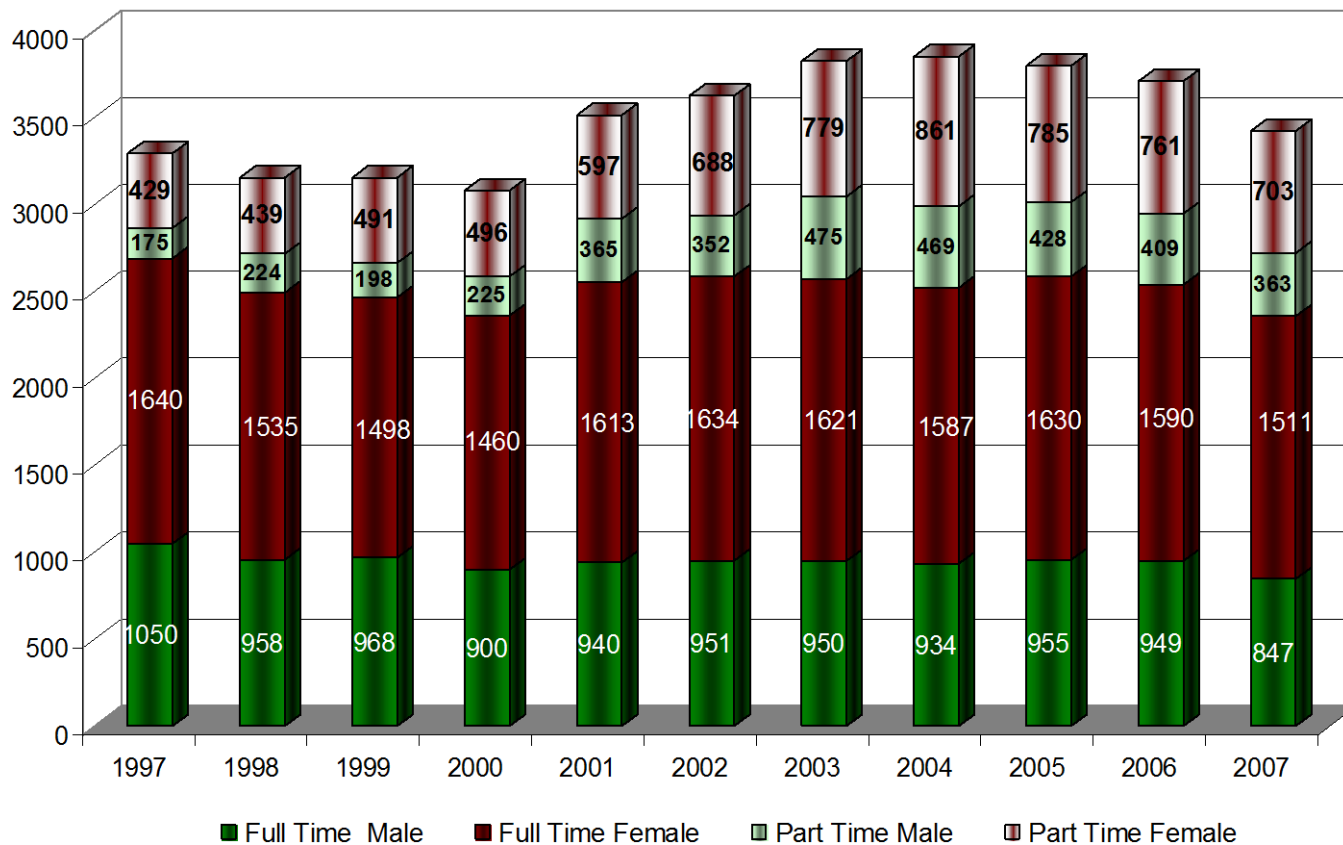


Graduate Students



Data source for fall 2007 information: PeopleSoft Report #NDU02SRA, Fall 2007

**MSU Full-Time Enrollments by Gender and Enrollment Status
Combined Undergraduate and Graduate 1997-2007**



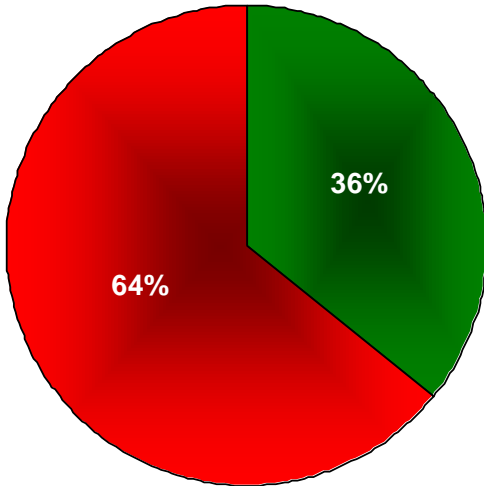
Enrollment by Gender

2007-08

Fulltime - Enrolled in 12-24 Semester Hours

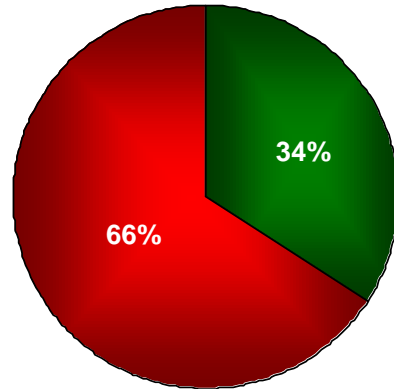
Part-Time - Enrolled in 1-11 Semester Hours

Fulltime Undergraduates



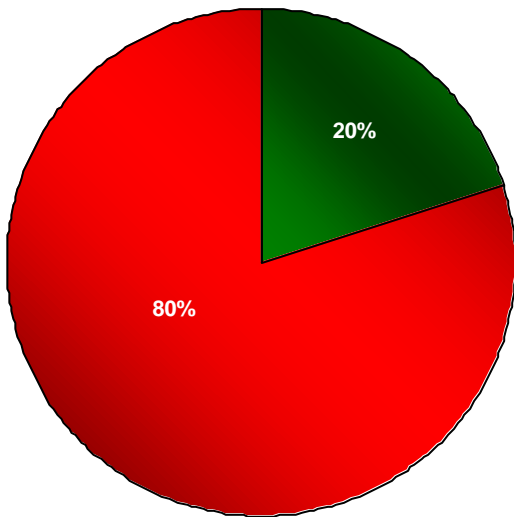
■ Male ■ Female

Part-Time Undergraduates



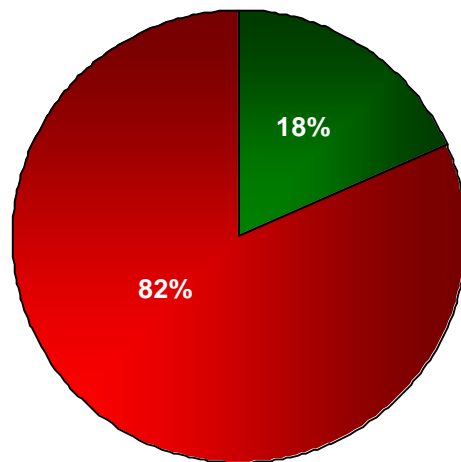
■ Male ■ Female

Fulltime Graduate



■ Male ■ Female

Part-time Graduate



■ Male ■ Female

MSU Student Totals by Ethnicity - 1997-2007

(graduate and undergraduate combined)

	1997	1998	1999	2000	2001	2002	2003	2004	2005	2006	2007	06-07 % Chg
Caucasian	2623	2595	2638	2578	2970	3065	3209	3202	3214	2974	2737	-8.0
Male	953	968	966	931	1096	1075	1144	1129	1153	1077	973	-9.7
Female	1670	1627	1672	1647	1874	1990	2065	2072	2061	1895	1764	-6.9
African American	46	63	60	58	101	99	116	114	83	93	90	-3.2
Male	28	39	36	34	56	52	73	66	50	58	50	-13.8
Female	18	24	24	24	45	47	43	48	33	35	40	14.3
American Indian	131	140	148	150	148	153	137	117	122	142	127	-10.6
Male	57	54	65	61	46	54	54	42	39	36	34	-5.6
Female	74	86	83	89	102	99	83	75	83	106	93	-12.3
Asian/Pacific Islander	11	16	21	17	35	37	47	43	38	40	35	-12.5
Male	8	8	8	4	17	18	23	23	23	15	12	-20.0
Female	3	8	13	13	18	19	20	24	15	25	23	-8.0
Hispanic	37	27	31	38	47	59	74	86	77	91	76	-16.5
Male	15	14	15	18	20	30	37	43	38	41	26	-36.6
Female	22	13	16	20	27	29	37	43	39	50	50	0
Non Resident Alien	386	309	257	240	214	212	225	245	259	299	290	-3.0
Male	122	94	76	77	70	74	80	79	173	101	86	-14.9
Female	264	215	181	163	144	138	145	166	86	198	204	3.0
Not Reported	-	-	-	-	-	-	-	-	-	75	69	-8.0

MSU Students by Residency 1997-2007

	1997	1998	1999	2000	2001	2002	2003	2004	2005	2006	2007	% Chg 06-07
Total North Dakota	2369	2319	2383	2334	2544	2630	2661	2650	3165	2972*	2777	-6.6
Male	861	866	888	832	878	895	895	866	1126	1053	967	-8.2
Female	1508	1453	1495	1502	1666	1735	1766	1784	2039	1917	1810	-5.6
Total ND Military	269	267	236	227	438	446	609	592	* Combined with Total ND with conversion. See note below.			
Male	106	107	72	77	206	181	288	277				
Female	163	160	164	150	232	265	321	315				
Total Non-Resident	656	570	536	520	533	549	555	609	633	740	647	-12.6
Male	258	209	206	216	221	227	243	260	257	305	243	-20.3
Female	398	361	330	304	312	322	312	349	376	435	404	-7.1
Canadian Residents	298	299	237	210	177	178	190	219	225	255	234	-8.2
British Columbia	2	3	4	2	3	5	7	8	7	14	5	64.3
Alberta	16	20	14	9	10	9	14	15	3	12	12	0
Saskatchewan	207	207	162	148	122	114	117	151	173	176	163	-7.4
Manitoba	73	67	55	50	42	48	48	41	37	44	43	-2.3
Ontario	0	2	1	1	0	2	3	3	4	7	8	14.3
New Brunswick	0	0	1	0	0	0	1	1	1	0	0	0
Quebec	0	0	0	0	0	0	0	0	0	2	3	50.0

Note: PeopleSoft does not separate ND Military from ND residents. Total nonresident includes all enrollments minus ND and military.

* Includes 2 students who did not identify gender. Data for 2005 forward is from PeopleSoft report ID NDU02SRD (Residency).

The "Total Non-Resident" category contains all students that are not residents of ND, including: out-of-state and international (including Canadian).

**MSU New Students, Transfers, and
Older than Average Students (OTAS)
1997-2007**

	1997	1998	1999	2000	2001	2002	2003	2004	2005	2006	2007	06-07 %Chg
Total New Freshman	470	418	525	511	506	552	543	549	471	483	445	-7.9
Male	178	164	210	219	203	231	211	215	206	205	197	-3.9
Female	292	254	315	292	303	321	332	334	265	278	248	-10.8
Total Transfers	369	347	336	328	419	429	449	456	382	279	278	-0.4
Male	176	144	145	138	170	172	203	188	138	100	85	-15
Female	193	203	191	190	249	257	246	268	244	179	193	7.8
Total OTAS	898	863	818	776	1026	1058	1126	1152	1142	1089	1106	1.6
Male	318	326	294	271	361	358	400	418	412	406	396	-2.5
Female	580	537	524	505	665	700	726	734	730	683	710	4.0
New Grad Students										79	88	11.4
Male										16	20	25
Female										63	68	7.9

Older Than Average Student (OTAS): undergraduate 25 years and older.

****Note:** Data in Fact Books 2001-2004 previously included only the data for full-time OTA undergraduate students. The numbers in this chart now include both full and part-time students for all years presented. Breakdowns of full and part-time students are presented graphically, by year, on the next page.

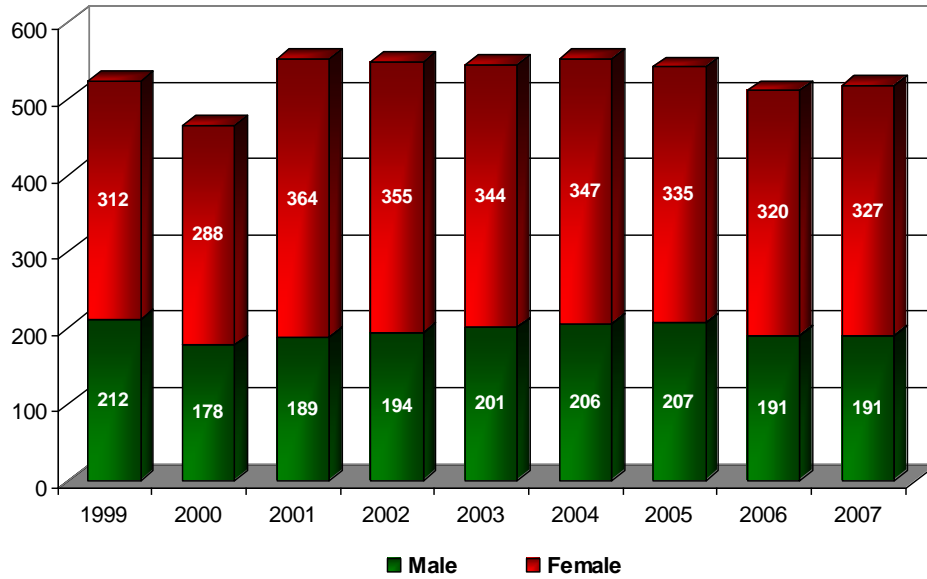
Data from the PeopleSoft era (2005 – 07) is taken from the PeopleSoft NSUS third week report NDU02SRD for New Freshmen, Transfers, and Beginning Graduates. Data for OTAS is from the PeopleSoft NSUS third week report NDU02SRD.

MSU Older Than Average Student (OTAS)

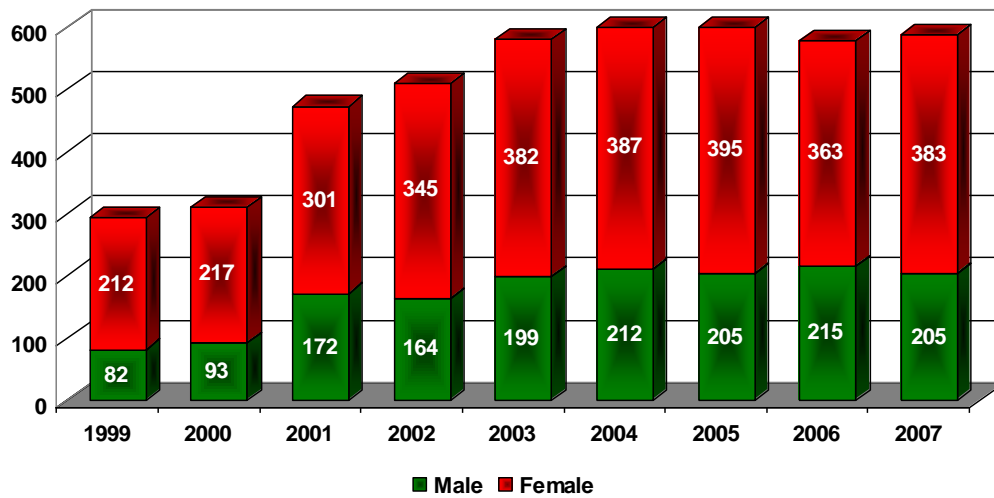
Enrollment: 1997 - 2007

(OTA = student age 25 or greater)

Full-Time Students

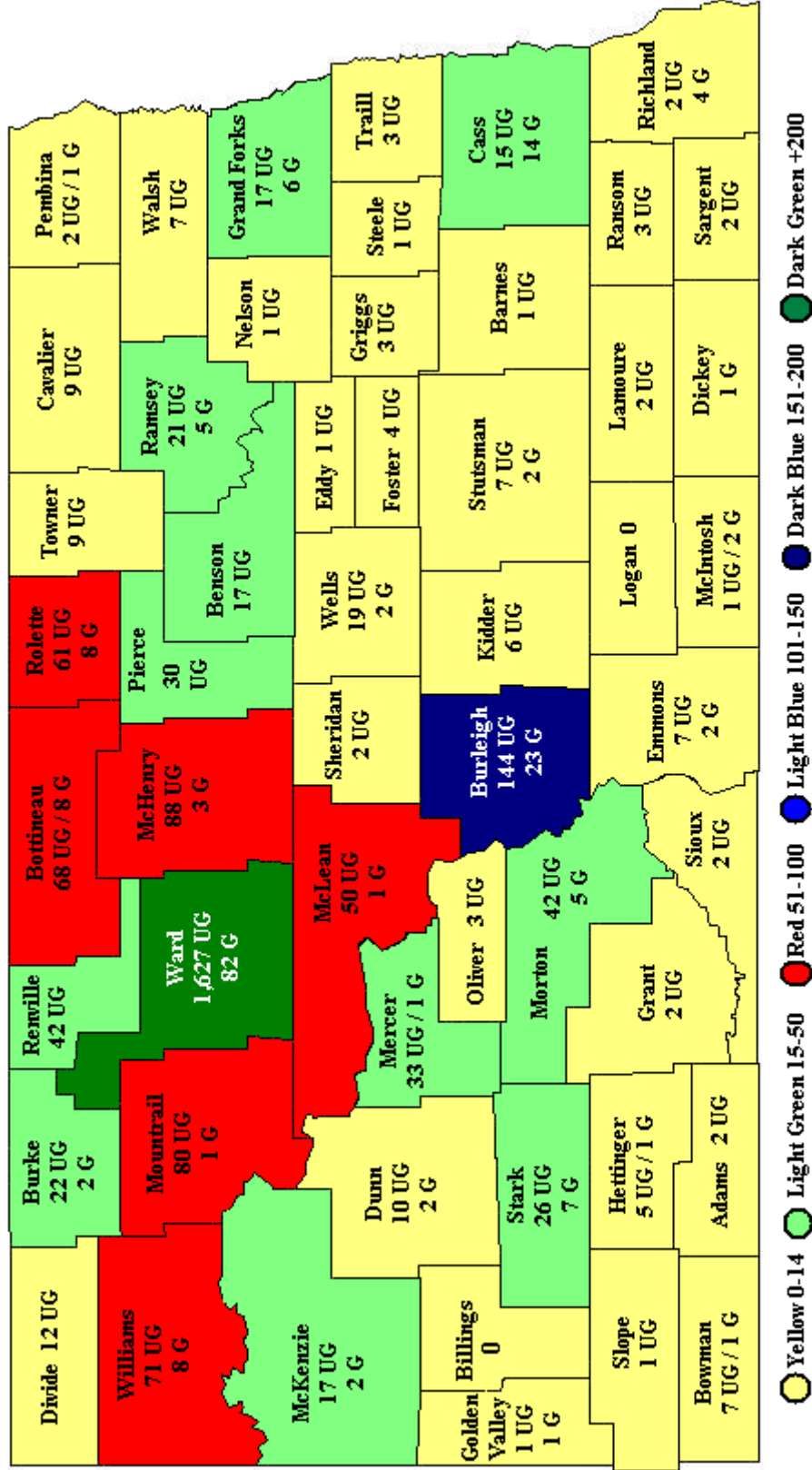


Part-Time Students



Enrolled Undergraduate and Graduate Students by North Dakota County: Fall 2007 N = 2608 Undergraduate (UG) and 195 Graduate (G)

Data Source: PeopleSoft Report #NDUH2SRG



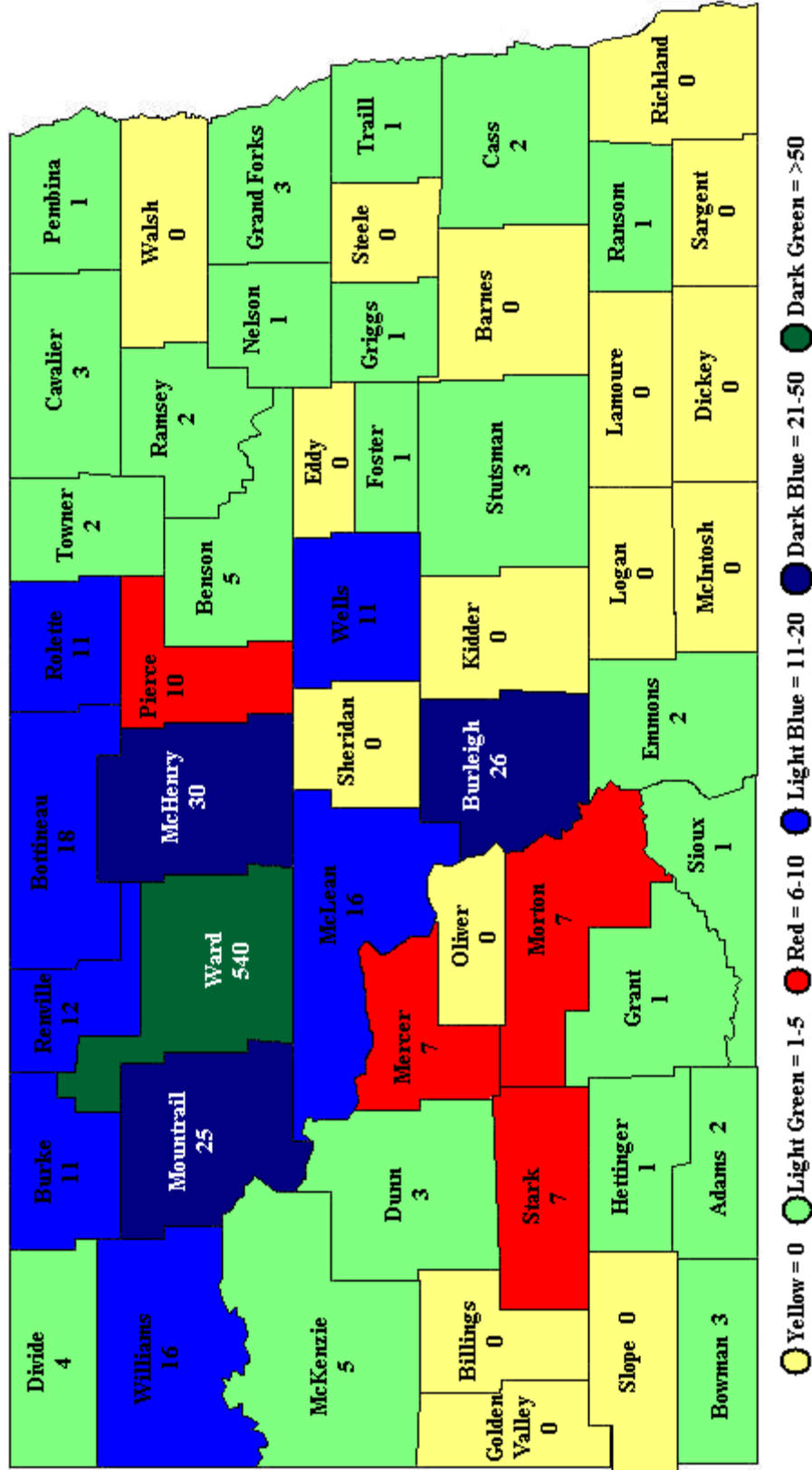
**North Dakota Graduate and Undergraduate
Students by North Dakota County: 1997-2007**

	1997	1998	1999	2000	2001	2002	2003	2004	2005	2006	2007
Adams	4	4	4	2	4	9	6	2	4	2	2
Benson	6	9	13	11	12	11	16	13	16	18	17
Bottineau	96	112	102	95	95	87	94	87	88	71	76
Burke	23	28	23	19	24	20	27	31	32	28	24
Burleigh	52	74	140	126	132	139	162	177	182	181	167
Cass	7	5	6	5	7	30	11	21	41	38	29
Cavalier	6	11	14	18	16	15	13	17	13	11	9
Divide	15	18	15	18	8	14	10	14	15	8	12
Dunn	2	4	2	6	7	8	10	9	12	9	12
Grand Forks	7	12	15	17	11	10	15	20	23	21	23
Hettinger	1	2	4	5	2	5	7	7	10	9	6
McHenry	75	109	100	105	122	110	112	124	105	102	91
McKenzie	20	23	13	21	20	21	23	26	17	18	19
McLean	55	70	81	77	86	78	75	75	70	53	51
Mercer	29	30	30	39	36	37	36	49	44	46	34
Morton	13	24	50	42	32	34	46	48	54	53	47
Mountrail	55	58	56	48	64	61	64	67	76	71	81
Pembina	3	4	8	8	4	5	4	4	5	4	3
Pierce	41	39	42	44	33	30	32	32	26	36	30
Ramsey	10	20	18	17	21	29	23	28	33	30	26
Renville	38	50	57	52	74	80	74	68	67	47	42
Richland	2	1	0	2	2	4	8	4	11	5	6
Rolette	69	99	101	112	118	81	78	77	75	81	69
Sheridan	5	5	6	8	9	6	6	7	5	4	2
Stark	18	10	20	19	16	22	16	27	26	39	33
Stutsman	11	7	5	7	5	8	10	12	10	10	9
Towner	7	9	10	5	7	6	9	10	11	8	9
Walsh	2	3	6	5	9	6	6	5	7	7	7
Ward	1959	1515	1445	1404	1752	1887	2008	1893	1865	1725	1709
Wells	20	22	21	19	21	19	20	21	15	15	21
Williams	78	96	81	77	98	95	88	103	104	94	79

Counties not included above (average by 1997/2005/2006/2007):

Barnes (3/7/8/1), Billings (0.25/0/1/0), Bowman (4/4/10/8), Dickey (1,75/1/1),
 Eddy (1.125/1/1), Emmons (3.875/10/10), Foster (3.375/3/3), Golden Valley (1.875/2),
 Grant (2.25/2/3), Griggs (1.625/5/4), Kidder (2/0/5), LaMoure (2.75/0/4), Logan (0.875/0/2),
 McIntosh (2/3/1), Nelson (2.375/0/2), Oliver (2.75/4/2), Ransom (0.75/2/4), Sargent (1.5/3/5),
 Sioux (1.5/7/2), Slope (0.625/2/2), Steele (0.5/4/2), Traill (1.5/5/7).

Freshman by North Dakota County: Fall 2007
N = 795



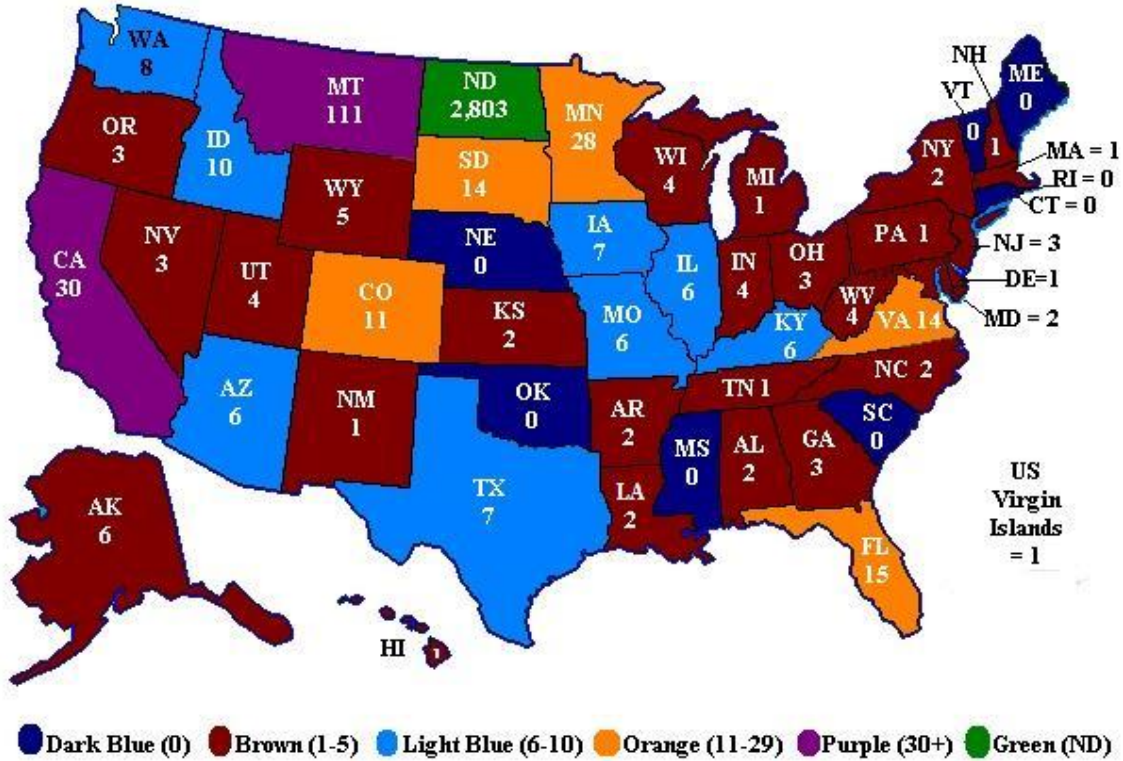
Minot State University
Freshman* by North Dakota County
1997 - 2007

	1997	1998	1999	2000	2001	2002	2003	2004	2005	2006	2007
Barnes									5	1	0
Benson	1	0	2	1	4	1	6	1	3	2	5
Bottineau	20	10	11	10	21	18	25	17	32	17	18
Burke	3	7	5	2	6	8	4	8	14	8	11
Burleigh	11	11	9	12	12	14	17	27	71	25	26
Cass	0	0	1	1	4	6	1	2	7	1	2
Cavalier	1	2	3	7	6	4	6	5	2	2	3
Divide	8	4	4	5	1	5	2	5	9	1	4
Dunn	1	0	0	3	2	4	5	3	6	2	3
Grand Forks	2	4	1	3	3	5	6	4	9	4	3
Hettinger	1	1	1	1	0	2	0	3	3	2	1
McHenry	23	34	34	25	45	37	39	41	49	46	30
McKenzie	4	2	2	11	6	8	6	4	3	6	5
McLean	21	19	21	22	23	18	13	19	23	9	16
Mercer	12	7	13	18	8	10	11	10	11	7	7
Morton	3	4	0	5	0	7	9	9	19	16	7
Mountrail	10	11	9	11	23	20	17	14	32	21	25
Pembina	3	1	2	0	0	2	1	1	2	0	1
Pierce	18	11	12	14	9	5	14	10	7	13	10
Ramsey	2	2	4	3	3	8	7	4	12	4	2
Renville	12	6	16	13	25	36	30	26	26	17	12
Richland	1	1	0	1	1	1	4	0	9	1	0
Rolette	10	11	19	10	15	11	13	12	25	16	11
Sheridan	2	1	2	1	1	0	1	4	2	1	0
Stark	9	0	2	4	4	6	6	7	14	13	7
Stutsman	5	0	0	2	0	5	2	2	4	2	3
Towner	3	2	3	1	4	1	2	0	6	1	2
Walsh	0	0	3	0	4	3	2	3	2	1	0
Ward	451	394	446	424	506	566	653	582	746	596	540
Wells	7	7	11	4	6	4	5	7	3	4	11
Williams	14	16	18	13	23	18	21	28	49	19	16

Other country totals for 8 years / total for 2007: Adams (7/2), Billings (3/0), Bowman (14/3), Dickey (2/0), Eddy (3/0), Emmons (7/2), Foster (7/1), Golden Valley (4/0), Grant (9/1), Griggs (4/1), Kidder (5/0), LaMoure (1/0), Logan (1/0), McIntosh (4/0), Nelson (5/1), Oliver (5/0), Ransom (3/1), Sargent (4/0), Sioux (3/1), Slope (2/0), Steele (2/0), Traill (4/1).

* Freshman students are defined as any first-time students and any other student who has not yet obtained sufficient credits to advance to sophomore standing. Data source for 2007: PeopleSoft Report ID # NDUH2SRG

MSU Enrolled Students by State of Origin Fall 2007 (n = 3,153)



State	2005	2006	2007	State	2005	2006	2007	State	2005	2006	2007
AK	6	5	6	LA	1	2	2	OH	6	4	3
AL	1	1	2	MA	2	5	1	OK	0	1	0
AR	1	2	2	MD	3	7	2	OR	4	2	3
AZ	9	8	6	ME	0	0	0	PA	2	5	1
CA	30	35	30	MI	4	3	1	RI	0	1	0
CO	11	13	11	MN	36	34	28	SC	1	2	0
CT	1	0	0	MO	6	4	6	SD	24	27	14
DE	0	1	1	MS	1	2	0	TN	0	0	1
FL	9	19	15	MT	103	127	111	TX	14	8	7
GA	3	3	3	NC	3	3	2	UT	3	2	4
HI	2	1	1	ND	3,140	2,987	2,803	VA	8	10	14
IA	4	2	7	NE	3	2	0	VT	0	0	0
ID	18	9	10	NH	1	1	1	WA	22	21	8
IL	8	8	6	NJ	3	2	3	WI	5	5	4
IN	1	0	4	NM	3	2	1	WV	5	3	4
KS	1	3	2	NV	4	7	3	WY	8	9	5
KY	2	2	6	NY	8	7	2	*AE	5	4	6

* Armed Forces (Europe and Pacific combined)

MSU Total Enrollment by State of Origin: 1997-2007

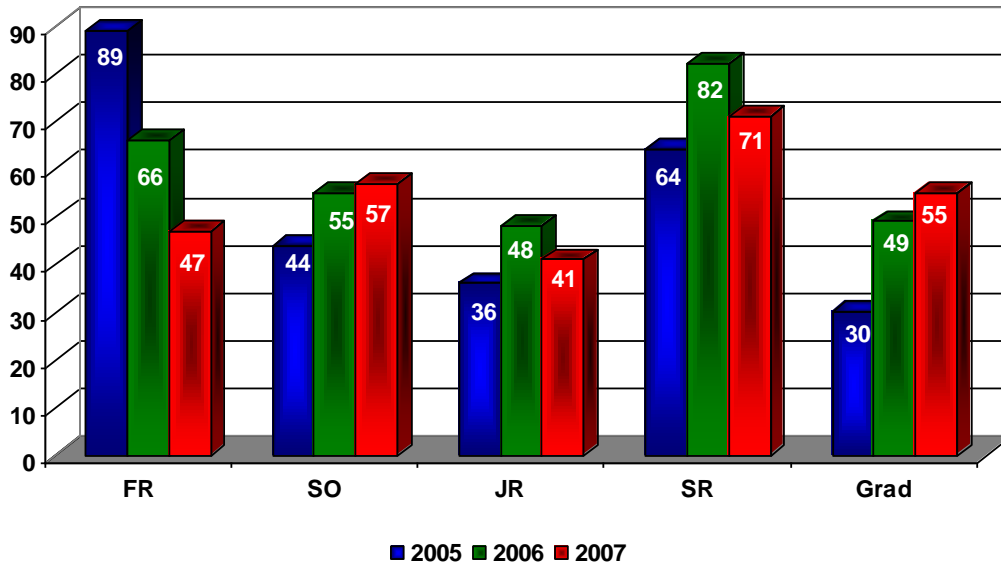
State	1997	1998	1999	2000	2001	2002	2003	2004	2005	2006	2007
AK	1	1	3	1	1	6	3	2	6	5	6
AL	0	3	1	0	1	5	7	3	1	1	2
AR	1	0	0	3	2	2	2	3	1	2	2
AZ	1	3	2	6	7	7	10	12	9	8	6
CA	15	32	37	40	37	34	40	38	30	35	30
CO	1	2	5	8	9	13	15	15	11	13	11
CT	0	0	0	0	1	1	2	5	1	0	0
DE	0	1	1	0	1	0	0	0	0	1	1
FL	4	1	2	4	7	9	3	8	9	19	15
GA	0	2	2	2	1	2	4	8	3	3	3
HI	0	2	0	0	0	0	0	0	2	1	1
IA	2	3	3	4	5	3	3	6	4	2	7
ID	0	4	3	2	4	4	9	11	18	9	10
IL	1	2	3	2	4	4	6	7	8	8	6
IN	2		0	0	1	5	2	5	1	0	4
KS	1	2	0	1	3	4	2	4	1	3	2
KY	0	1	0	2	0	2	2	2	2	2	6
LA	0	0	1	0	3	4	4	5	1	2	2
MA	0	1	2	2	6	4	5	5	2	5	1
MD	1	2	3	3	3	1	1	1	3	7	2
ME	1	0	1	0	0	1	2	0	0	0	0
MI	1	5	4	2	8	6	4	7	4	3	1
MN	22	33	28	37	31	23	30	34	36	34	28
MO	2	1	0	4	5	4	4	9	6	4	6
MS	0	1	0	1	0	0	2	3	1	2	0
MT	151	173	181	158	163	143	126	131	103	127	111
NC	0	1	3	1	4	2	10	8	3	3	2
ND	2748	2510	2532	2474	2887	3011	3164	3139	3140	2987	2,803
NE	1	0	1	0	1	1	0	1	3	2	0
NH	0	1	1	1	1	1	2	1	1	1	1
NJ	2	1	1	3	0	1	2	4	3	2	3
NM	1	2	1	4	2	1	2	2	3	2	1
NV	3	5	5	10	13	11	9	9	4	7	3
NY	1	2	2	2	10	5	9	12	8	7	2
OH	0	1	3	5	7	9	6	4	6	4	3
OK	0	1	3	2	1	1	0	2	0	1	0
OR	1	3	6	9	10	6	5	3	4	2	3
PA	0	2	2	2	6	9	8	5	2	5	1
RI	0	1	1	0	0	0	2	1	0	1	0
SC	0	2	2	1	3	4	4	2	1	2	0
SD	10	9	12	9	6	6	14	18	24	27	14
TN	2	3	0	3	1	3	5	1	0	0	1
TX	2	4	7	5	10	12	18	13	14	8	7
UT	0	1	1	0	1	0	2	0	3	2	4
VA	0	2	2	1	2	5	8	10	8	10	14
VT	0	0	0	1	1	1	0	1	0	0	0
WA	3	5	7	11	20	15	19	21	22	21	8
WI	1	2	6	4	8	8	8	6	5	5	4
WV	0	0	0	0	3	4	6	4	5	3	4
WY	4	3	8	12	12	6	8	7	8	9	5

Minot State University International Students: Fall 2007

Country	FR	SO.	JR	SR	Grad	Total
Burkina Faso	0	0	0	1	0	1
Brazil	0	1	0	0	0	1
Canada	45	51	38	67	37	238
China	0	0	1	0	15	16
Cameroon	0	1	0	0	0	1
Croatia	0	0	1	0	0	1
France	0	1	0	0	0	1
Guinea	0	0	0	1	0	1
Hong Kong	1	0	0	0	0	1
India	0	0	0	0	3	3
Korea	1	0	0	0	0	1
Nepal	0	0	1	0	0	1
Poland	0	0	0	1	0	1
Senegal	0	1	0	0	0	1
Serbia	0	1	0	1	0	2
United Kingdom	0	1	0	0	0	1
Totals	47	57	41	71	55	271

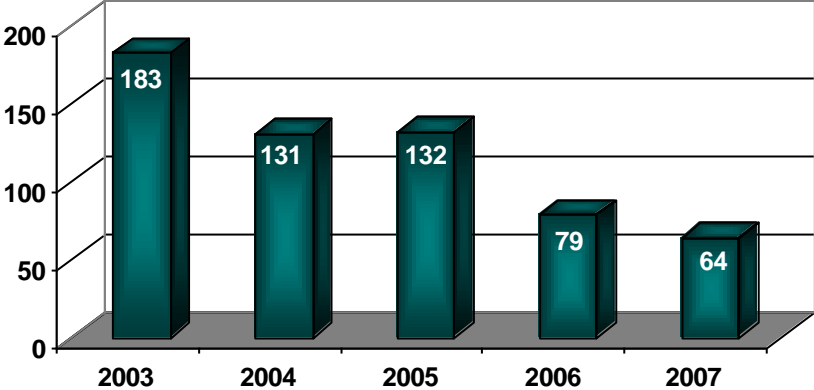
Data source: PeopleSoft Report Enrollment by State/Country Fall 2006

Status - International Students

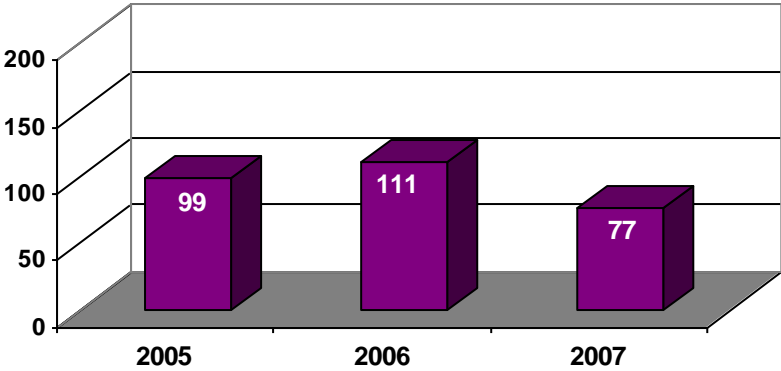


**MSU Center for Extended Learning
Enrollments: Details by Program**

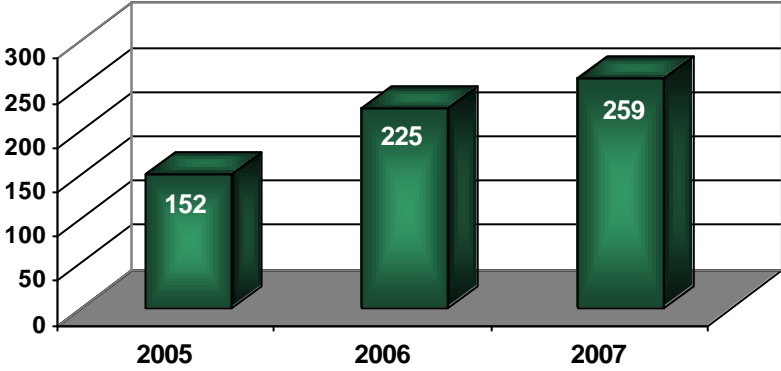
Correspondence



Dual Credit

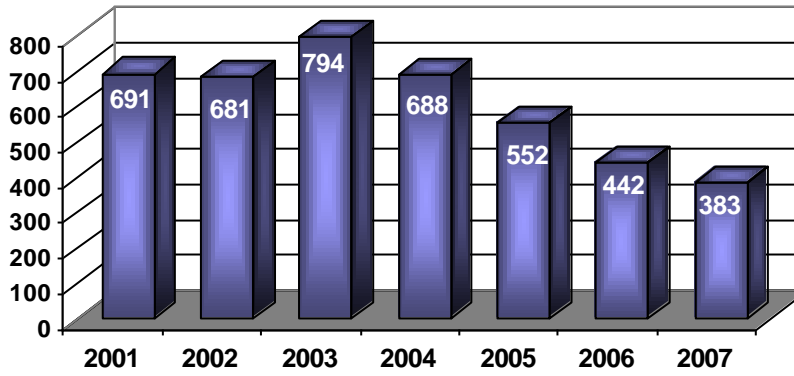


Bismarck

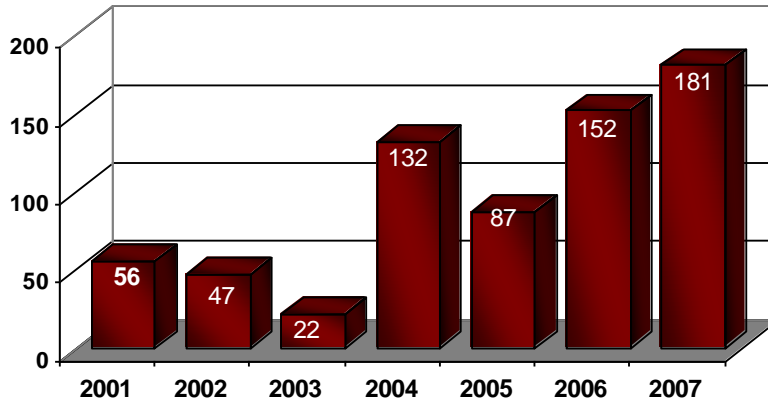


**MSU Center for Extended Learning
Enrollments: Fall 2001 – 2007**

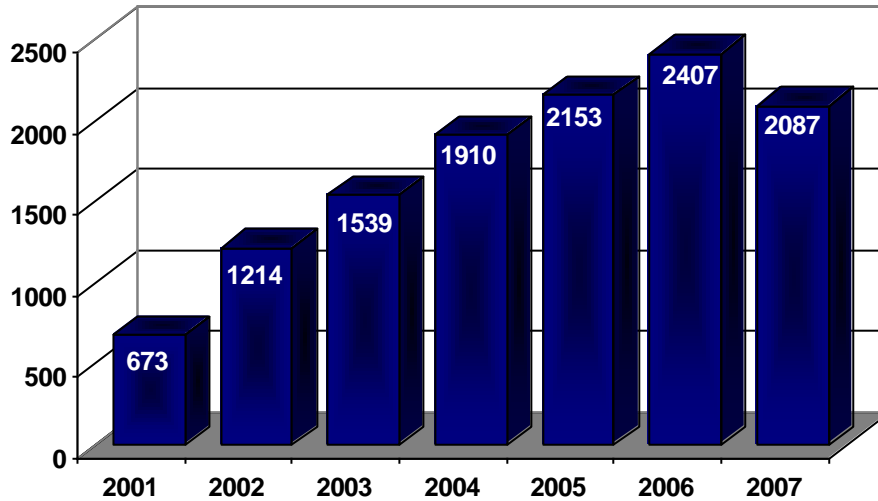
Minot AFB



IVN



Online



New First-Year Student Applications & Enrollment Patterns 1999-2007

	1999	2000	2001	2002	2003	2004	2005	2006*	2007
Applied	750	764	757	743*	713	753	645	690	641
Enrolled	525	511	506	552	543	527	471	448	436
Denied	24	26	25	37	45	39	19	16	24
% Enrolled	70.0	66.8	67.0	74.0	76.0	70.0	73.0	64.9	68

**Data in the 2006 column is changed in the 2007 Fact Book. The data received from Admissions for 2006 had included students for fall and spring terms vs. fall semester only. The data now represents fall only data.*

Retention of First-Year Students 1998-2007

Term	Full-time First Time Freshmen	Term	Still Enrolled	Retention Percentage
Fall 98	418	Fall 99	264	63%
Fall 99	525	Fall 00	301	57%
Fall 00	511	Fall 01	315	62%
Fall 01	506	Fall 02	321	63%
Fall 02	551	Fall 03	321	58%
New Calculation: 1998 – 2002 Calculation for Retention: <u>All</u> new freshmen who return the following year. *2004 Calculation for Retention: New freshmen enrolled Fall 2003 (12 semester hours or more) and returned for <u>any</u> number of credits in Fall 2004.				
Fall 03	396	Fall 04	248	*62.7%
Fall 04	393	Fall 05	274	70.0%
Fall 05	445	Fall 06	279	62.7%
Fall 06	486	Fall 07	292	60%

New Transfer Application & Enrollment Patterns 1999-2007

New Transfer	1999	2000	2001	2002	2003	2004	2005	2006	2007
Applied	654	639	559	563	551	616	633	527	546
Enrolled	336	328	419	429	449	493	584	443	355
% Enrolled	51.4	51.3	75.0	76.0	81.5	80.0	63.8	59.9	65.0

Minot State University
Institutional Average GPA: 1999 – 2007
Undergraduate

	98-99	99-00	00-01	01-0	02-03	03-04	04-05	05-06	06-07
Freshman	2.26	2.23	2.31	2.28	2.31	2.36	2.51	2.62	**
Sophomore	2.69	2.59	2.64	2.72	2.65	2.73	2.76	2.55	**
Junior	2.90	2.85	2.83	2.90	2.91	2.87	2.94	2.52	**
Senior	3.04	3.03	3.04	3.04	3.04	3.08	3.07	2.80	**
UG Special	3.15	3.20	3.17	3.19	3.28	3.25	3.23	**	**
Average	2.93	2.92	2.93	2.91	2.93	2.96	2.99	2.62	2.95

** Undergraduate Specialist is no longer tracked in the software. These students are now included with students with Senior Status. Data provide by MSU Registrar's Office.

Graduate Student GPA – 1998 - 2007

98-99	99-00	00-01	01-02	01-03	03-04	04-05	05-06	06-07
3.81	3.76	3.73	3.70	3.72	3.71	3.75	3.15	3.82

Data provide by MSU Registrar's Office. Confirmed with the Graduate School

Comparison of ACT
National, State, and Minot State University
Averages by Year

Year	NATIONAL					STATE					MINOT STATE UNIVERSITY				
	02/03	03/04	04/05	05/06	06/07	02/03	03/04	04/05	05/06	06/07	02/03	03/04	04/05	05/06	06/07
Composite	21.5	21.5	20.9	20.9	21.1	21.3	21.2	21.2	21.3	21.4	21.6	21.3		21.2	21.2
English	21.0	21.1	20.4	20.4	20.6	20.3	20.2	20.2	20.4	20.5	20.6	20.3		20.3	20.1
Mathematics	21.0	20.9	20.7	20.7	20.8	21.2	21.3	21.3	21.2	21.4	21.4	21.1		20.9	21.0
Reading	21.9	22.0	21.3	21.3	21.4	21.6	21.5	21.5	21.4	21.6	22.1	22.0		21.8	21.6
Science	21.4	21.4	20.9	20.9	20.9	21.6	21.4	21.4	21.5	21.5	21.6	21.2		21.5	21.6

National and State Data found <http://www.act.org/news/data/states.html>

Minot State University averages data provide by MSU Registrar's Office.

Data for 04/05 is not retrievable due to the PeopleSoft transition.

**MSU Student Housing Fall 2002 – 2007
By Residence Facility**

Residence	Cap	2002	2003	2004	2005	2006	2007	% 06
Women's								
Cook Hall	188	157	129	161	138	145	121	64%
Dakota Hall	96	65	72	72	73	47	28	29%
Men's								
McCulloch Hall	145	119	117	97	94	103	90	62%
Co-Ed								
C.P. Lura Manor	144	101	99	111	111	74	79	55%
Apartment								
Pioneer Hall	40	39	30	35	33	39	40	100%
Campus Heights	30	30	30	30	21	28	30	100%
Suite-Style Living								
Crane Hall	88	n/a	n/a	n/a	n/a	51	66	75%
Total	731	511	477	506	460	487	454	62%

Cap. = capacity.

The percentage is the capacity of the residence hall filled at the time of the 3rd Week Report.

Data Source: Director of Student Housing

Average Cost for Residence Hall Room per Semester

	2002	2003	2004	2005	2006	2007
Single	\$ 922.50	\$ 967.50	\$1,008.00	\$1037.50	\$1531.25	\$1680.00
Double	\$ 615.00	\$ 645.00	\$ 672.50	\$700.00	\$785.00	\$817.50

Data Source: Director of Student Housing

**MSU Residence Hall Disciplinary Action
Fall 2000 to Spring 2005**

	Fall 00	Sp 01	Fall 01	Sp 02	Fall 02	Sp 03	Fall 03	Sp 04	Fall 04	Sp 05	Fall 05	Sp 06	Fall 06
Visitation	34	29	52	28	67	15	45	23	41	39	56	22	46
Alcohol	29	10	45	37	24	24	60	10	39	24	11	20	55
Miscellaneous	21	26	52	41	64	69	79	43	70	58	34	10	66

Visitation: Opposite sex guest in building past guest hours.

Miscellaneous: Fights, parties, smoking.

Data Source: Director of Plant Services (2000-2005), Student Affairs 2006 data.

**Minot State University Crime Statistics*
Jan-Dec 1999 to Jan-Dec 2005**

	Jan-Dec 1999	Jan-Dec 2000	Jan-Dec 2001	Jan-Dec 2002	Jan-Dec 2003	Jan-Dec 2004	Jan-Dec 2005	Jan-Dec 2006
Crimes								
Murder	None	None	None	None	None	None	None	None
Forcible Sex Offenses	None	None	None	None	1	None	None	None
Robbery	None	None	None	None	None	None	None	None
Aggravated Assault	None	None	None	None	None	None	None	None
Burglary	2	None	None	1	2	2	6	20
Motor Vehicle Theft	None	None	3	3	2	None	2	None
Arrests								
Liquor Law Violation	29	43	69	73	76	63	36	86
Drug Abuse	4	4	4	None	5	6	2	None
Weapons	1	1	1	1	1	1	2	None

*Arrests or reported crimes on campus, on property of university affiliate organizations, or affecting university sanctioned events. Data is computed on the calendar year not the academic or fiscal year. Data Source: Director of Plant Services (2000-2005), Student Affairs (2006 data).

Minot State University

- ***Declared Majors***
- ***Degrees Conferred***
- ***Certificates Conferred***

**College of Arts & Sciences:
Declared Major - Spring Term**

Majors are combined where indicated (BA/BSE)

Program	1998	1999	2000	2001	2002	2003	2004	2005	2006	2007	
Art (BA/BSE)	33	63	58	56	63	69	78	97	68*	66	
Arts Administration (BS)							0	0	1	1	
Fine Arts									4	2	
Biology/Biology Education	66	71	62	58	73	76	75	90	125*	122	
Broadcasting (BA)	45	45	53	36	48	50	54	39	70*	51	
Chemistry (BA/BSE)	7	12	10	12	14	15	22	27	283*	70	
Clinical Laboratory Science	20	22	21	15	11	6	4	9	8*	10	
Communication (BA)							0	2	9*	9	
Communication Arts (BA/BSE)	29	28	29	23	25	30	34	21	7*	5	
Computer Science (BS)	79	100	102	112	124	109	93	113	98*	67	
Criminal Justice (BS)	178	160	189	205	237	239	258	262	299	209	
Earth Science/Geology	17	18	17	15	6	9	14	17	17	20	
Earth Science Education (BSE)	0	0	0	0	9	7	4	2	2	1	
Economics (BA)	11	9	11	8	7	8	8	7	7	3	
English (BA/BSE)	79	62	64	63	77	64	62	80	62*	74	
Foreign Language (BA/BSE)	1	0	0	0	0	0	0	0	*	2	
German (BA/BSE)	3	4	4	4	8	10	7	8	5	8	
French (BA/BSE)	1	4	5	2	1	6	7	3	4	3	
Spanish (BA/BSE)	10	11	15	9	13	17	15	18	8*	16	
General Studies (BGS)	333	322	347	363	547	690	825	282	140	196	
History (BA/BSE)	50	57	48	46	60	58	76	93	95	82	
Mathematics (BA/BSE)	39	50	30	32	47	45	54	81	57*	65	
Multimedia Studies (BS)				0	14	19	8	9	9*	3	
Music (BA/BSE)	50	58	66	67	64	61	61	64	42*	52	
Pre-Chiropractic	13	13	8	6	5	6	8	9	Now enrolled as biology, chemistry, history (law), physics, etc.		
Pre-Dental Hygiene	4	4	3	3	3	7	4	4			
Pre-Dentistry	4	5	3	3	11	10	11	14			
Pre-Engineering	17	20	10	15	8	6	4	12			
Pre-Law	7	9	9	8	8	7	6	3			
Pre-Medical	19	19	16	18	18	14	12	15			
Pre-Mortuary	6	4	5	4	2	1	3	0			
Pre-Occupational Therapy	5	6	1	3	2	2	1	0			
Pre-Optometry	7	1	4	1	3	5	3	2			
Pre-Pharmacy	9	7	6	4	13	13	7	6			
Pre-Physical Therapy	10	14	12	9	6	6	8	9			
Pre-Veterinary Medicine	7	4	6	7	5	7	10	10			
Pre-Wildlife Studies	1	1	3	1	1	2	1	0			
Physical Science (BA/BSE)	3	3	5	5	8	3	3	2		0*	2
Physics (BA/BSE)	5	6	5	8	10	6	7	13		21*	17
Radiologic Technology (BS)	52	53	45	51	50	74	58	70	65	68	

Social Science (BA/BSE)	45	27	22	27	33	32	30	22	13*	25
Sociology (BA/BSE)	16	19	18	18	27	30	32	32	31*	27
Theatre Arts (BA)							0	3	15*	17
Total Majors by College	1281	1311	1312	1317	1661	1819	1967	1550	1332	1293

Note: For declared majors for 2005-06, PeopleSoft data replaced Legacy system. PeopleSoft did not allow for “PRE” programs so students had to choose majors in related fields. **Starting in Spring 2005 the data includes 2nd majors.** Graduate students are included in the totals for Communication Disorders, Criminal Justice, Elementary Education, Management, Mathematics, and Music in 05-06 as the data had been historically tabulated this way.

College of Education and Health Sciences Declared Major - Spring Terms

Program	1998	1999	2000	2001	2002	2003	2004	2005	2006	2007
Addiction Studies (BS)	2	31	14	13	19	24	32	34	28	36
Communication Disorders (BS)	122	106	105	108	98	112	144	157	200*	180
Communication Disorders Ed. (BSE)	New 2001			0	0	0	0	14	6	0
Corporate Fitness (BS)	35	48	42	37	31	31	35	40	44*	58
Developmental Disabilities (AS/BS)	3	6	4	2	5	9	11	8	34*	6
Education of the Deaf (BSE)	36	40	29	43	29	31	22	12	4*	4
Ed. of the Mentally Retarded (BSE)	48	35	22	30	33	46	28	42	54	55
Elementary Education (BSE)	382	338	307	289	305	315	268	304	323	260
Nursing (BSN)	190	185	169	174	227	239	246	300	271	256
Physical Education (BSE)	77	69	49	66	59	67	80	84	87	89
Psychology (BA/BSE)	144	120	128	129	127	101	99	131	122	118
Social Work (BSW)	112	118	96	89	93	77	64	62	88	100
Total Majors by College	1151	1096	965	980	1026	1052	1029	1188	1166	1162

Note: For declared majors for 2005-06, PeopleSoft data replaced Legacy system. PeopleSoft did not allow for “PRE” programs so students had to choose majors in related fields. **Starting in Spring 2005 the data includes 2nd majors.** Graduate students are included in the totals for Communication Disorders, Criminal Justice, Elementary Education, Management, Mathematics, and Music in 05-06 as the data had been historically tabulated this way.

College of Business: Declared Major - Spring Terms

Program	1998	1999	2000	2001	2002	2003	2004	2005	2006	2007
Accounting (BS)	130	128	121	110	116	125	135	132	139	111
Applied Bus. Info. Tech. (BAS)							6	17	24*	21
Applied Management (BAS)							2	11	11*	21
Business Ed. (BSE)	33	30	36	46	31	26	30	36	7*	23
Finance (BS)	73	74	64	61	76	96	93	88	163*	81
General Business (BAS)	0	0	0	0	0	10				
International Business (BS)	0	6	11	22	23	28	15	13	6	3
Management (BS)	246	239	264	269	273	287	310	333	326*	339
Management Info. Systems (BS)	66	93	106	84	125	125	132	120	78	67
Marketing (BS)	53	51	55	58	54	42	45	75	74*	81
Virtual Business (BS)	0	0	0	0	0	0	0	2	0*	2
Total Majors by College	601	621	657	650	698	739	768	827	789	749

Note: For declared majors for 2005-06, PeopleSoft data replaced Legacy system. PeopleSoft did not allow for "PRE" programs so students had to choose majors in related fields. **Starting in Spring 2005 the data includes 2nd majors.** Graduate students are included in the totals for Communication Disorders, Criminal Justice, Elementary Education, Management, Mathematics, and Music in 05-06 as the data had been historically tabulated this way. Below is a breakdown of all the graduate programs.

Graduate School: Declared Major - Spring Terms

Program	97/98	98/99	99/00	00/01	01/02	02/03	03/04	04/05	05/06	06/07
Audiology	12	8	2					0	0	0
Communication Dis	1	7	25	13	14	14	39	49	53	48
Criminal Justice	4	9	7	18	12	12	10	13	9	10
Education (Deaf)	5	0	0	0	0	0	0	0	0	0
Education (M.R.)	0	0	0	0	0	0	0	0	0	0
Elementary Ed.	1	3	2	1	24	1	0	0	1	0
English Ed.	0	0	0	1	0	0	0	0	1	0
Education					8	35	23	34	31	43
Learning Dis.	6	11	8	0	0	0	0	0	0	0
Information Sys.							15	36	26	
Management	20	26	30	48	59	51	52	21	34	71
Mathematics Ed.	5	1	1	1	4	3	6	13	19	1
Music Ed.	4	2	1	1	1	0	0	1	1	0
School Psych.	17	16	19	20	20	16	15	17	17	11
Science Ed.	1	0	2	1	0	1	4	1	0	0
Svr. Multi-Handicapped	0	0	0	0	0	0	0	0	0	0
Special Ed.	5	11	18	15	21	28	26	49	45	56
Speech Language Path.	27	31	15	27	23	0	0	0	0	0
Psychology							0	0	0	0
Total Graduates	108	125	130	146	186	154	175	213	247	260

Degrees Conferred College of Arts and Sciences

Data Sources: Graduation data for first majors is from the annual publication “North Dakota University System: Programs Offered/Completed at North Dakota Institutions of Postsecondary Education.”

Data for second majors is from the MSU Registrar’s Office from the document reported to the National Center for Education Statistics’ Integrated Postsecondary Education Data System (IPEDS).

Program	97/98	98/99	99/00	00/01	01/02	02/03	03/04	04/05	05/06	06/07
Art (BA)	2	5	3	6	5	9	2	7	3	4
Art (BFA)	New in 2004									
Arts Administration (BS)	New in 2002						0	0	0	0
Art Education (BSE)	2	3	0	0	0	1	2	1	1	3
Biology (BA)	3	6	7	9	8	7	10	7	13	12
Biology Education (BSE)	4	2	0	2	3	2	3	2	3	0
Broadcasting (BA)	4	8	9	6	3	4	14	7	9	3
Chemistry (BA)	0	2	0	0	0	1	1	3	1	4
Chemistry Education (BSE)	0	0	1	0	0	0	2	0	0	0
Clinical Laboratory Science (BS)	2	3	4	0	5	3	0	0	1	1
Communication Arts (BA)	6	3	5	2	1	2	4 Inactivated			1
Communication (BA)	New in 2004						0	0	2	0
Communication Arts (BSE)	1	0	1	1	2	0	0	0	1	1
Computer Science (BS)	9	17	12	10	20	11	9	10	15	7
Criminal Justice (BS)	46	55	61	55	53	43	47	41	53	47
Earth Science (BA)	0	2	0	0	0	0	0	0	0	0
Earth Science Education (BSE)	0	0	0	1	0	2	0	0	1	1
Economics (BA)	1	4	4	4	4	2	5	0	1	2
English (BA)	3	9	6	2	3	4	8	4	4	7
English Education (BSE)	6	7	6	7	2	4	3	3	6	6
Foreign Language (BA)	1	2	3	0	0	0	0	0	0	0
Foreign Language/German (BA)	Split in 1999		0	0	1	2	0	3	0	0
Foreign Language/French (BA)			0	1	0	1	0	0	1	0
Foreign Language/Spanish (BA)			0	0	0	0	1	1	0	1
Foreign Language/German			0	0	1	1	0	0	1	0

(BSE)										
Foreign Language/French (BSE)			0	0	0	0	0	0	0	0
Foreign Language/Spanish (BSE)			1	0	2	0	0	2	0	0
General Studies (BGS)	3	8	13	19	13	16	28	15	25	27
Geology (BA)	0	0	1	2	0	1	1	2	0	0
History (BA)	3	5	6	3	5	5	4	4	5	3
History Education (BSE)	5	2	7	4	5	1	6	2	1	4
Mathematics (BA)	8	5	2	2	3	5	4	4	1	2
Mathematics Education (BSE)	5	5	5	2	3	2	5	2	5	6
Multimedia Studies (BS)	New 1999			0	0	1	2	0	0	0
Music (BA)	2	1	0	5	6	2	5	4	3	0
Music Education (BSE)	2	6	7	8	7	7	5	3	7	6
Physical Science (BA)	0	0	0	0	0	0	0	2	0	0
Physical Science Ed. (BSE)	1	1	0	1	1	3	0	0	0	0
Physics (BA)	0	1	0	0	1	1	1	1	0	0
Physics Education (BSE)	0	0	1	1	0	0	0	0	1	0
Radiologic Technology (BS)	8	9	15	5	5	4	8	12	14	7
Social Science (BA)	4	4	1	1	2	4	2	2	0	1
Social Science Education (BSE)	6	4	5	3	6	2	9	1	0	4
Sociology (BA)	5	4	10	3	6	3	8	5	7	6
Theatre Arts (BA)	New 2004						0	0	1	2
Total Graduates by College	142	183	196	165	175	153	199	150	186	168

Second Majors Reported to IPEDS
Arts & Sciences

College of Arts & Sciences	2005	2006	2007
Art	2	0	0
Mathematics Education	1	0	0
Mathematics	3	1	2
Music	0	3	1
Medical Radiological Tech	1	0	0
Science Education	0	1	0
History Education	0	2	0
Science Education	0	1	0
History Education	0	2	2
German	1	1	0
Spanish	0	1	1
Chemistry	1	0	0
Clinical Lab Sciences	0	1	0
History	0	2	0
Computer Science	0	0	1
Information Science	0	0	1
Communication Studies	0	0	1
Total	9	15	9

College of Education and Health Sciences

Program	97/98	98/99	99/00	00/01	01/02	02/03	03/04	04/05	05/06	06/07
Addiction Studies (BS)	6	14	7	2	1	4	3	6	7	5
Communication Disorders (BS)	41	22	23	22	18	7	16	16	20	25
Communication Disorders Education (BSE)	New 2001			1	0	9	0	0	0	0
Corporate Fitness (BS)	9	11	20	11	8	7	12	2	9	12
Developmental Disabilities (AS)	1	0	6	2	2	1	1	1	2	3
Developmental Disabilities (BS)	1	0	3	1	0	0	1	4	3	3
Education of the Deaf (BSE)	10	8	5	7	3	4	0	3	2	1
Education of the Mentally Retarded (BSE)	16	15	13	11	3	8	8	5	8	3
Elementary Education (BSE)	93	93	63	75	55	72	47	61	48	36
Nursing (BSN)	35	32	32	33	31	51	33	46	46	48
Physical Education (BSE)	12	8	15	11	7	11	13	3	5	18
Psychology (BA)	29	26	22	17	30	29	10	19	12	13
Psychology Education (BSE)	New Program 2001			1	1	0	0	0	0	2
Social Work (BSW)	39	39	24	26	18	21	17	11	11	14
Total Graduates by College	292	268	233	220	177	224	161	177	173	183

Degrees Reported to IPEDS as First Majors. Reported in NDUS Degrees Offered/Degrees Completed. This originates in the MSU Registrar's Office.

Second Majors Reported to IPEDS

College of Education and Health Sciences	2005	2006	2007
Education	1	1	0
Elementary Education	2	10	7
Physical Education	0	1	0
Corporate Fitness	0	1	8
Psychology	2	3	4
Sociology	2	3	5
Substance Abuse	1	0	0
Music Teacher Educator	0	0	1

College of Business

Program	97/98	98/99	99/00	00/01	01/02	02/03	03/04	04/05	05/06	06/07
Accounting (BS)	21	19	24	29	19	12	23	25	29	13
Applied Business Info. Tech. (BAS)	New 2003						3	5	6	8
Applied Management (BAS)	New 2003						1	0	2	2
Business Education (BSE)	5	8	4	9	13	9	4	4	4	1
Finance (BS)	13	23	30	23	12	21	23	20	15	10
General Business (BAS)	0	0	0	0	0	3				
International Business (BS)	New	1	3	3	4	3	7	2	0	1
Management (BS)	38	58	59	46	49	42	36	41	39	48
Management Information Systems (BS)	11	14	25	19	14	22	23	21	18	13
Marketing (BS)	13	19	18	22	16	14	12	19	9	4
Virtual Business (BS)	New 2004-05						0	0	0	0
Total Graduates by College	101	142	163	151	127	126	132	137	122	100

College of Business **Second Majors Reported to IPEDS**

College of Business	2005	2006	2007
Management	4	5	1
Accounting	0	1	1
Finance	7	1	3
Marketing	8	9	20

Undergraduate Certificates Awarded **2001 – 2007**

Certificate Programs	00/01	01/02	02/03	03/04	04/05	05/06	06/07
Application Software Specialist	New 2001	2	1	9	9	6	2
Computer Science Basic Programming	New 2001	0	1	0	2	2	0
Desktop & Web Publishing	New 2001	1	1	1	2	1	0
Police Management & Investigations	New 2001	0	0	0	0	0	0

Graduate Degrees Conferred: 1998 through 2007

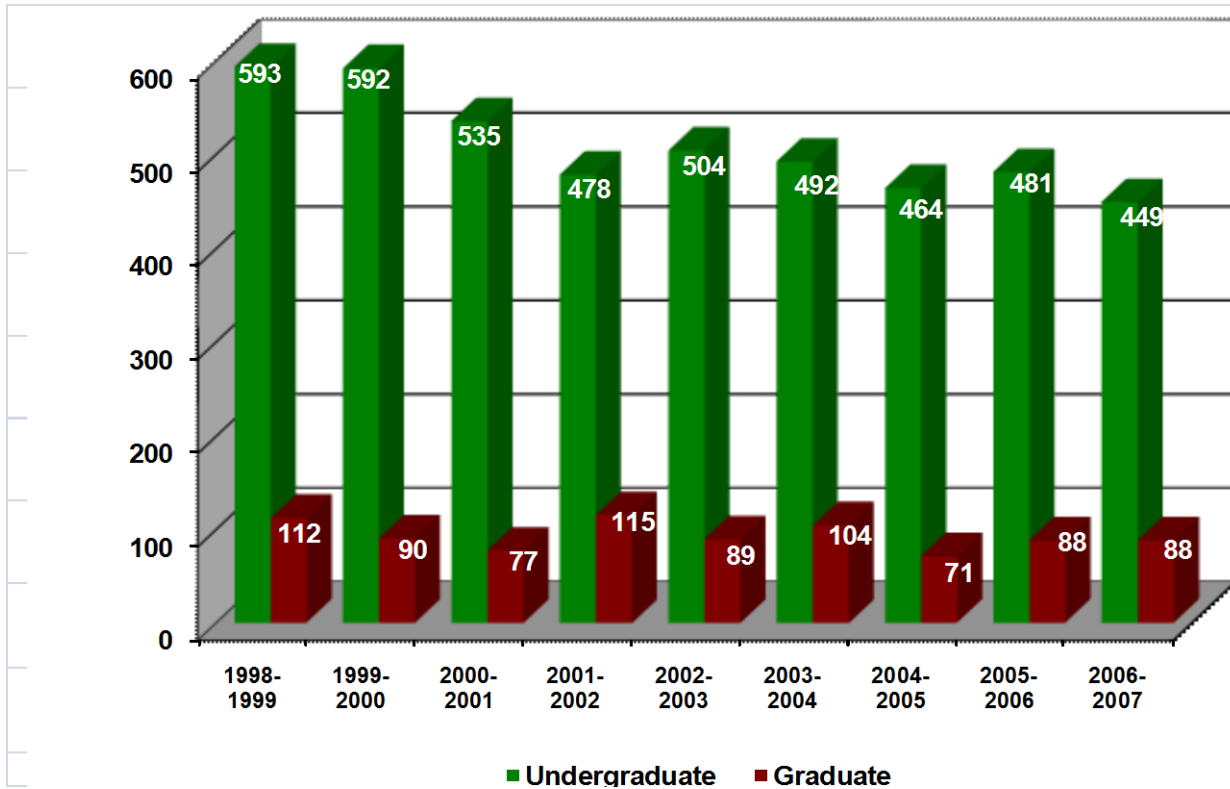
Program	97/98	98/99	99/00	00/01	01/02	02/03	03/04	04/05	05/06	06/07
Communication Disorders (MS)	36	38	29	33	30	25	19	18	25	14
Criminal Justice (MS)	1	4	0	2	0	1	4	3	2	3
Education (MED) New 2001-02						4	6	10	11	11
Elementary Education (MS)	14	35	18	4	30	0	6	0	0	0
English Education* (MAT)	New	0	0	3	7	0	1	0	1	0
Information Systems (MS) New 2003-04										6
Management (MS)	5	6	5	15	22	47	41	22	18	28
Mathematics Education (MAT)	9	9	5	3	7	2	8	4	5	2
Music Education (MME)	0	3	5	0	0	0	3	0	1	4
School Psychology (EDSPEC)	6*	2*	8	4	8	5	5	2	8	6
Science Education (MAT)	3	0	2	1	0	1	1	0	1	1
Special Education (MS)	21	15	18	12	11	4	10	12	16	13
Totals	95	112	90	77	115	89	104	71	88	88

*English Education – New 1997 – 1 cohort authorized.

Graduate Certificates Awarded: 2000-01 through 2006-07

Certificate	00/01	01/02	02/03	03/04	04/05	05/06	06-07
Technology for Managers New 2001	0	0	0	0	0	0	0

**Minot State University
Degrees Conferred 1998-2007**



**Minot State University
Degrees Conferred: 1998 – 2007**

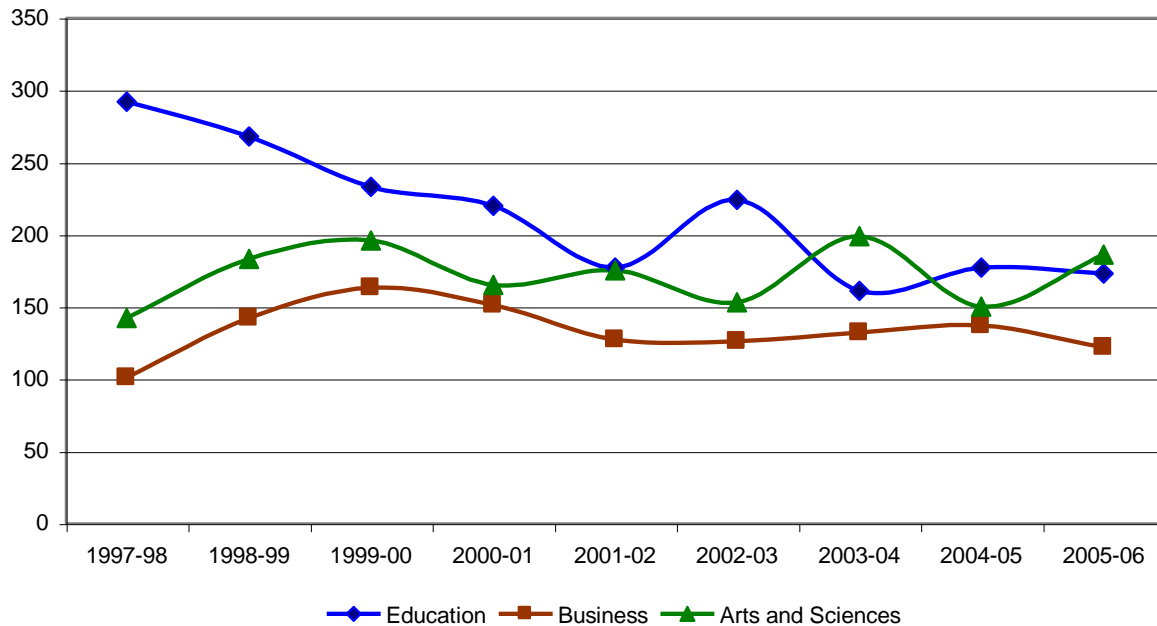
	Undergraduate	Graduate	Total
1997-98	535	95	630
1998-99	593	112	705
1999-00	592	90	682
2000-01	535	77	612
2001-02	478	115	593
2002-03	504	89	593
2003-04	492	104	596
2004-05	464	71	535
2005-06	481	88	569
2006-07	449	88	537

Undergraduate degree data includes Associate of Arts degrees.
Graduate degree information includes School Psychology EDSPEC degrees.

***Undergraduate Degrees Conferred
2003-04 and 2006-07***

Undergraduate Degrees	2004	2005	2006	2007
Associate of Arts (AA)	1	1	2	3
Bachelor of Arts (BA)	79	75	63	61
Bachelor of Applied Science (BAS)	4	5	8	8
Bachelor of Science (BS)	222	219	229	196
Bachelor of Science Education (BSE)	108	92	97	92
Bachelor of General Studies (BGS)	28	15	25	27
Bachelor of Science Nursing (BSN)	33	46	46	48
Bachelor of Social Work (BSW)	17	11	11	14
Total	492	464	481	449

Graduates by College 1998 - 2007 by First Degree



***Minot State
University***

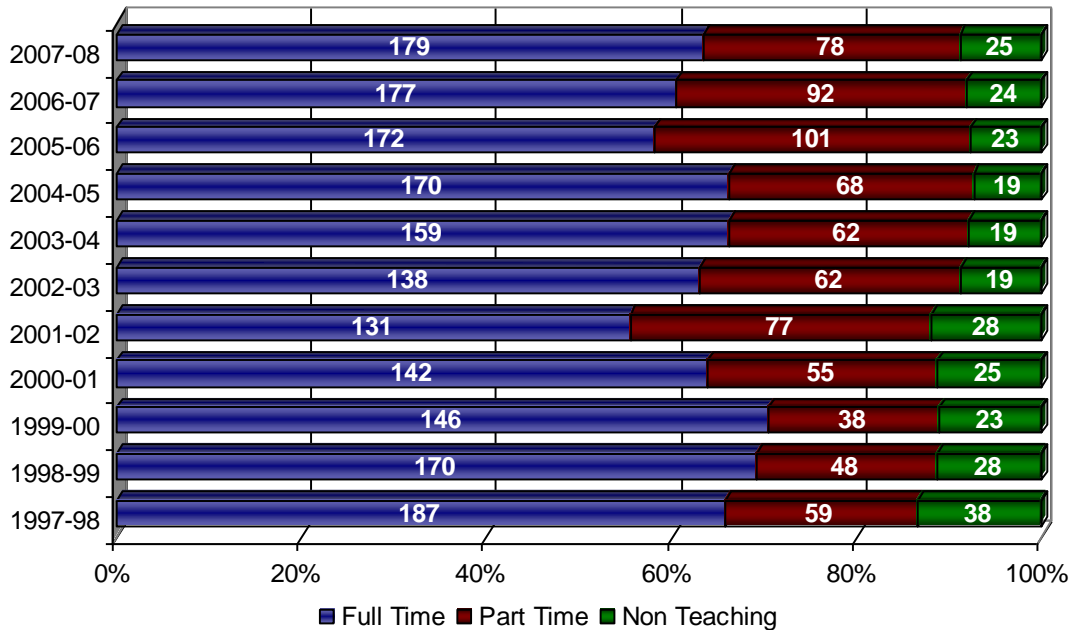
Faculty and Staff

Minot State University
Faculty Status and Gender Distributions
1998-99 through 2006-07

	98-99	99-00	00-01	01-02	02-03	03-04	04-05	05-06	06-07	07-08
Full-time	170	146	142	131	138	159	170	172	177	179
Male	97	86	82	74	79	86	85	88	90	89
Female	73	60	60	57	59	73	85	84	87	90
Part-Time	48	38	55	77	62	62	68	101	92	78
Male	15	18	25	38	24	23	28	43	37	28
Female	33	20	30	39	38	39	40	58	55	50
Special (coaches, etc)	28	23	25	28	19	19	19	25	24	25
Male	14	10	8	12	5	9	5	9	9	10
Female	14	13	17	16	14	10	14	14	15	15
Total	246	207	222	236	219	240	257	296	293	282
Male	126	114	115	124	108	118	118	140	136	127
Female	120	93	107	112	111	122	139	156	157	155

Data Source: Minot State University Human Resource Office and annual MSU Fact Books.

Total Faculty by Year and Status



Minot State University
Average Faculty Salaries by Rank
1998-1999 through 2006-2007

Year	Professor	Associate Professor	Assistant Professor	Instructor	All Listed Ranks	Change
1998-99	\$55,762	\$42,449	\$37,708	\$32,487	\$42,162	8.3%
1999-00	\$57,680	\$44,230	\$38,453	\$32,403	\$43,192	2.4%
2000-01	\$56,964	\$45,414	\$39,777	\$34,698	\$43,784	1.4%
2001-02	\$57,072	\$46,162	\$40,460	\$36,713	\$44,975	2.7%
2002-03	\$57,576	\$47,860	\$41,837	\$37,635	\$46,046	2.3%
2003-04	\$58,190	\$48,077	\$42,238	\$37,231	\$46,479	0.93%
2004-05	\$61,576	\$48,727	\$43,423	\$39,608	\$48,334	4.0%
2005-06	63,351	51,518	\$44,503	\$37,786	\$49,254	0.2%
2006-07	64,871	51,888	45,812	34,368	47,756	-0.03
2007-08	65,615	54,956	48,298	36,994	50,310	5.35%

Data Source: Minot State University Human Resource Office and annual MSU Fact Books.

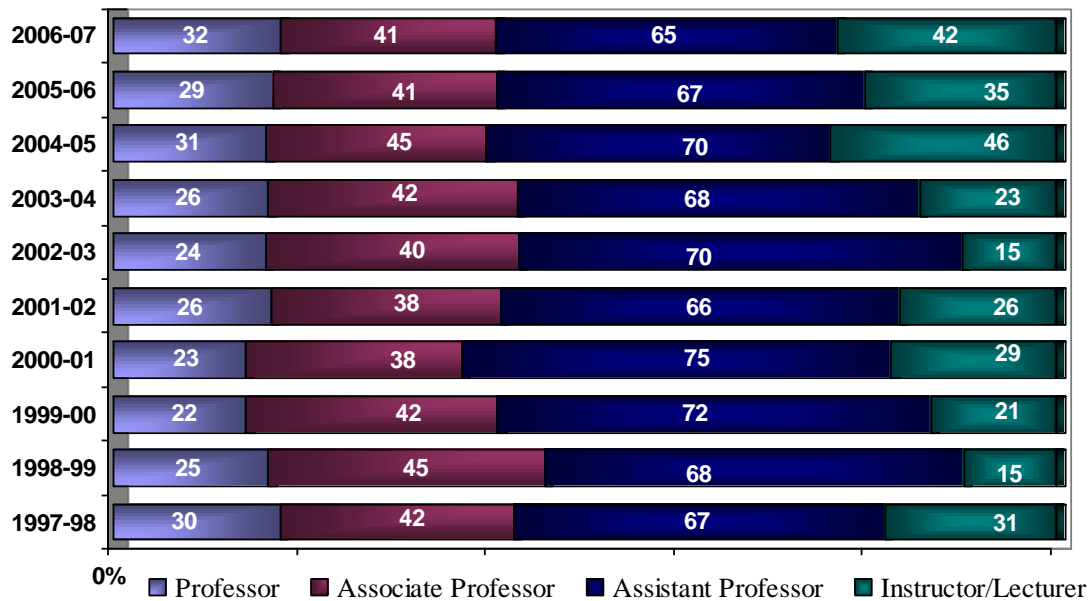
MSU Staff by Job Family & Gender
Fall 2007

Job Family	Female	Male	Total
0000 Executive/Administrative	6	8	14
1000 Administrative/Managerial	3	1	4
3000 Professional	57	22	79
4000 Technical and Paraprofessional	27	5	32
5000 Office Support	58	0	58
6000 Crafts/Trades	3	18	21
7000 Services	7	16	23
Total	161	70	231

Data Source: Minot State University Human Resource Office and annual MSU Fact Books.

Full-time Faculty Rank and Gender Distribution 1998-99 through 2007-08

	98-99	99-00	00-01	01-02	02-03	03-04	04-05	05-06	06-07	07-08
Professor										
Male	22	22	19	21	19	20	25	23	24	26
Female	3	2	4	5	5	6	6	6	5	6
Total	25	22	23	26	24	26	31	29	29	32
Associate Professor										
Male	27	24	22	23	23	26	28	26	26	26
Female	18	18	16	15	17	16	17	15	15	15
Total	45	42	38	38	40	42	45	41	41	41
Assistant Professor										
Male	35	36	38	31	36	33	41	30	31	24
Female	33	36	37	35	34	35	29	37	36	41
Total	68	72	75	66	70	68	70	67	67	65
Instructor/Lecturer										
Male	7	8	10	11	4	7	18	10	9	13
Female	8	13	19	15	11	16	28	25	31	29
Total	15	21	29	26	15	23	46	35	40	42
Total	153	157	165	156	149	159	192	172	177	180



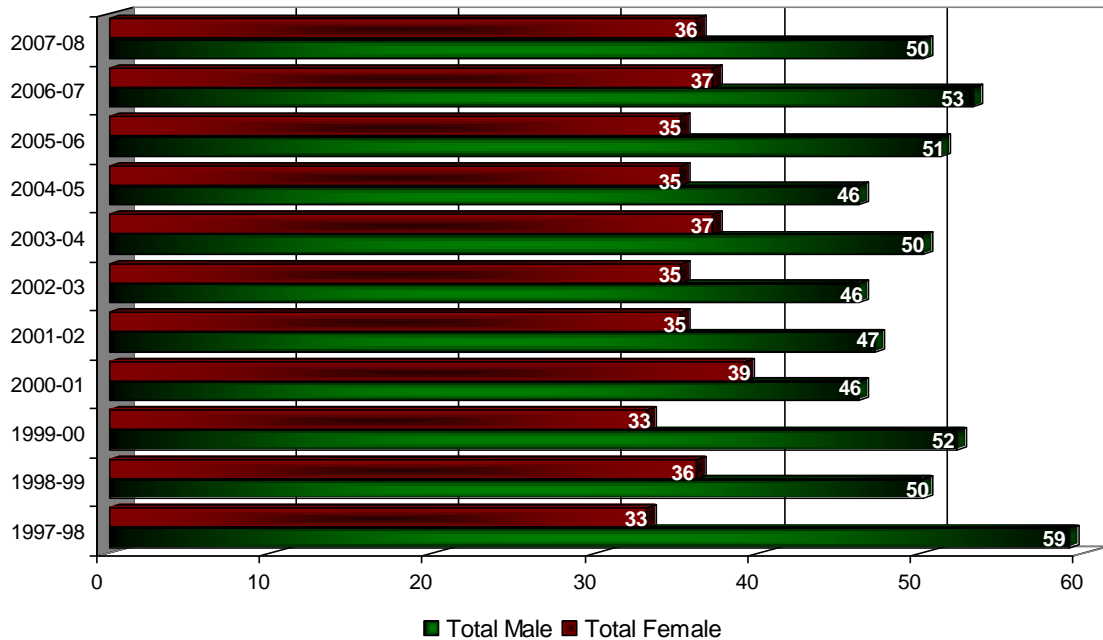
Data Source: Minot State University Human Resource Office and annual MSU Fact Books.

Minot State University
Tenured Faculty: Rank and Gender
1998-99 through 2006-07

	98-99	99-00	00-01	01-02	02-03	03-04	04-05	05-06	06-07	07-08
Professor	22	22	22	21	20	25	23	28	28	29
Male	19	20	18	17	16	19	18	22	23	23
Female	3	2	4	4	4	6	5	6	5	6
Associate Professor	36	35	33	33	34	35	33	35	36	31
Male	21	21	19	20	20	22	20	24	23	20
Female	15	14	14	13	14	13	13	11	13	11
Assistant Professor	28	28	30	28	27	27	25	23	26	26
Male	10	11	9	10	10	9	8	5	7	7
Female	18	17	21	18	17	18	17	18	19	19
Total	86	85	85	82	81	87	81	86	90	86
Total Male	50	52	46	47	46	50	46	51	53	50
Total Female	36	33	39	35	35	37	35	35	37	36

Data Source: Minot State University Human Resource Office and annual MSU Fact Books.

Total Tenured Faculty by Year and Gender
1997-98 through 2007-08



Headcount of Faculty in FT and PT Categories by Highest Degrees

Degree Level	Full-Time	Part-Time*
Doctorate	88	13
First Professional	7	3***
Master's	76	64
Bachelor's	5	14
Associate's	--	--
None	--	--
Total	176	95

Source: MSU Vice President for Academic Affairs Office

* Part-time faculty included in this chart include individuals who are part-time benefited and part-time in an adjunct capacity.

** Per the department chair, "National Association of Schools of Art and Design accreditation standards as quoted, "NASAD recognizes the Master of Fine Arts as the appropriate terminal degree for studio faculty. At the same time, some artist-teachers may hold other degrees; some may not hold any academic degrees. In such cases institutions should make appointments for studio faculty on the basis of experience and training..."

***Individuals with Jurist Doctorate recorded as First Professionals

***Minot State
University***

***Financial
Information***

Tuition and Fees Comparison

Tuition and Required Fees for Resident Undergraduate
A Regional Comparison ¹
2001-02 through 2007-08

Year	Minot State Variance to Regional Average	
	Dollars	Percent
2001-2002	-\$479	-15.7%
2002-2003	-\$500	-14.9%
2003-2004	-\$516	-13.8%
2004-2005	-\$395	-9.6%
2005-2006	-\$276	-6.3%
2006-2007	-\$112	-2.4%
2007-2008	-\$140	2.9%

¹ Regional averages include: CO, IA, KS, MN, MO, MT, NE, OK, SD, WI, and WY.

Data Source: February 2008 NDUS Student Affordability Report.

Tuition and Fees Compared to Household Income

Resident Undergraduate Tuition and Required Fees
As a percent of Median Household Income ^{1, 2}
2000-01 through 2007-08

Year	Minot State	
	Regional	ND
2000-2001	7.1%	7.4%
2001-2002	7.4%	7.2%
2002-2003	8.0%	7.9%
2003-2004	8.9%	9.0%
2004-2005	9.5%	9.2%
2005-2006	10.0%	10.4%
2006-2007	10.3%	10.6%
2007-2008	10.4%	11.6%

¹Tuition and Required Fees/median household income.

² Regional average includes: CO, IA, KS, MN, MO, MT, NE, OK, SD, WI, and WY.

Data Source: February 2008 NDUS Student Affordability Report.

Minot State University – Cost per Student

General Fund and Total Fund Revenue per FTE Student: FY 2005

Calculation 1: Unrestricted

General Fund/FTE Student ¹	\$ 4,431
Total Fund/FTE Student ²	\$ 5,467

Calculation 2: Combined Unrestricted & Restricted

General Fund/FTE Student ³	\$ 4,431
Total Fund/FTE Student ⁴	\$13,504

¹ unrestricted state transfers ÷ FTE students.

² Total unrestricted revenues + state transfers ÷ FTE students

³ Combined unrestricted and restricted state transfers ÷ FTE students

⁴ Combined unrestricted and restricted revenue + state transfers ÷ FTE students.

Data Source: FY 2005 NDUS audited financial statements and 2003-04 annualized enrollment schedule.
Reported for Fact Book by MSU Business Office

Calculation (See above)		FY 2001	FY 2002	FY 2003	FY 2004	FY 2005
1	General Fund/FTE Student ¹	\$5,201	\$ 4,626	\$ 4,646	\$ 4,366	\$4,431
	Total Fund/FTE Student ²	\$10,683	\$ 8,891	\$ 9,138	\$ 9,269	\$5,467
2	General Fund/FTE Student ¹	\$ 5,319	\$ 4,626	\$ 4,646	\$ 4,366	\$4,431
	Total Fund/FTE Student ²	\$13,135	\$11,610	\$12,326	\$12,366	\$13,504

Administrative, Instructional, and Other Costs per Student

Administrative, Instructional, and Other Unrestricted
Costs per FTE Student - FY 2005

Core Services ¹	\$ 7,299
Supporting Services & Student Aid ²	\$ 1,346
Administration & Plant Services ³	<u>\$ 2,251</u>
Total	\$10,896

¹ Core Services: Total unrestricted E & G expenditures and mandatory transfers for instruction + research + public services ÷ FTE students.

² Support services and student aid: Total unrestricted E & G expenditures and mandatory transfers for academic support + student services + scholarships and fellowships ÷ FTE Students.

³ Administrative and physical plant: Total unrestricted E & G expenditures and mandatory transfers for institutional support + operation and maintenance of physical plant ÷ FTE students.

Data Sources: FY 2005 NDUS audited financial statements and 2004-05 annualized enrollment schedule.

	FY 2001	FY 2002	FY 2003	FY 2004	FY 2005
Core Services	\$ 5,006	\$ 5,786	\$ 6,216	\$ 6,481	7,299
Supporting Services & Aid	\$ 1,600	\$ 2,017	\$ 2,094	\$ 1,887	1,346
Admin & Plant Services	\$ 1,876	\$ 1,555	\$ 1,684	\$ 1,298	2,251
Total	\$ 8,482	\$ 9,358	\$ 9,994	\$ 9,666	\$10,896

Minot State University
Percentage of Funding for Academic Support, Etc.

Percentage of Total Unrestricted Minot State Funding Used for Academic Support,
Student Services, and Scholarships and Fellowships FY 2004

Expenditures:

Academic Support	\$ 1,695,994
Student Services	\$ 1,788,474
Scholarships & Fellowships	<u>\$ 397,359</u>
	\$ 3,881,827

Revenues and state Transfers:

Unrestricted Revenue	\$ 38,947,126
Less: Auxiliary Revenue	<u>\$ (3,922,964)</u>
	\$35,790,260

	FY 2001	FY 2002	FY 2003	FY 2004	FY 2005	FY 2006
Academic Support	2,522,467	2,052,539	2,100,239	2,423,783	1,695,994	1,604,454
Student Services	1,265,913	1,758,533	1,691,520	1,755,802	1,788,474	2,262,487
Scholarships, etc.	251,809	1,779,228	2,359,079	1,572,952	397,359	466,682
Total	4,040,189	5,590,300	6,150,838	5,752,537	3,881,827	4,333,623
Unrestricted	6,975,149	32,182,264	36,213,841	37,703,239	38,947,126	39,263,382
Auxiliary Revenue	3,598,848	3,653,289	3,917,145	3,912,993	3,922,960	3,797,750
Total	23,376,301	28,528,975	32,296,696	33,790,246	35,790,260	35,465,632

Percentage of Minot State University Funding for Academic Support, Etc.

Percentage of Total Unrestricted Minot State Funding Used for Academic
Support, Student Services, and Scholarships and Fellowships FY 2004

Academic Support ¹	4.80%
Student Services ²	5.1%
Scholarships and Fellowships ³	<u>1.1%</u>
Total⁴	11.10%

¹ Total unrestricted expenditures for academic support ÷ total unrestricted revenues and auxiliary revenues.

² Total unrestricted expenditures for student services ÷ total unrestricted revenues and auxiliary revenues.

³ Total unrestricted expenditures for scholarships and fellowships
÷ total unrestricted revenues and state transfers – auxiliary revenues.

⁴ Total unrestricted expenditures for academic support + student services + scholarships and fellowships
÷ total unrestricted revenues and state transfers - auxiliary

Data Source: FY 2005 NDUS audited financial statements. Data provided by MSU Business Office.

Operating and Contributed Income Ratio

FY 2005

Unrestricted & Restricted Revenues

Revenues

Tuition and Fees	\$11,552,372
Federal grants and contracts	7,275,993
State grants and contracts	726,121
Private gifts, grants/contracts	943,896*
Sales and services – Ed. Depts.	867,379
Investment & endowment income	514,222
Auxiliary enterprise	3,797,750
Other operating revenue	49,779
Total	\$25,727,512

Total Revenue & State Transfers **\$39,313,161****

Operating and Contributed Income \$ 25,727,512
 Ratio \$ 39,313,161** = **65%**

Data Source: FY 2006 NDUS audited financial statements.
 2005 Data provided by MSU Business Office.

	FY 2001	FY 2002	FY 2003	FY 2004	FY 2005	FY 2006
Tuition and Fees	9,091,255	6,771,494	7,449,012	8,625,793	10,349,602	11,552,372
Federal grants & contracts	4,855,304	6,221,276	7,754,728	7,828,760	8,437,742	7,275,993
State grants and contracts	272,395	480,048	391,160	437,636	584,798	726,121
Private gifts, grants/contracts	827,337	836,011	1,219,368	1,175,615	1,379,857	943,896*
Sales and services – Ed. Depts.	764,747	1,135,641	1,510,864	2,034,927	1,162,785	867,379
Investment & endowment income	325,184	188,066	172,870	229,801	341,557	514,222
Auxiliary enterprise	3,598,848	3,653,289	3,917,145	3,912,993	3,922,964	3,797,750
Other operating revenue	n/a	74,075	149,203	149,203	(-10,661)	49,779
Total	19,735,070	19,359,900	22,564,350	24,389,793	26,168,644	25,727,512
Total Revenue & State	33,165,915	32,182,264	36,213,841	37,703,239	38,947,126	39,313,161**
Operating & Contributed Income Ratio	59.5%	60%	62%	65%	67%	65%***

Data Source: Fact Books from prior years – original source – NDUS audited financial statements.
 2005 - Data provided by MSU Business Office.

Data Source: 2006 data provided by NDUS Financial Report 2006.

* Sum of Gifts and Non-Governmental Grants & Contracts

** Sum of Total and State Appropriations

*** Total / Total Revenue & State

MSU Grants and Contracts
Fiscal Year 1998/99 through 2006/07

Fiscal Year	Private	State/Federal	Total
1997-98*	\$359,344	\$1,740,190	\$2,099,534
1998-99*	\$302,828	\$1,967,057	\$2,269,855
1999-00*	\$464,637	\$2,155,558	\$2,620,195
2000-01*	\$397,128	\$2,327,182	\$2,724,310
2001-02*	\$210,432	\$3,168,837	\$3,379,269
2002-03*	\$266,766	\$3,829,069	\$4,095,862
2003-04**	\$102,901	\$7,648,922	\$7,751,823
2004-05***	\$195,667	\$6,222,835	\$6,418,502
2005-06	\$209,161	\$6,119,386	\$6,328,547
2006-07	\$94,670	\$4,762,446	\$4,857,116

* Data represents funds expended by type and total.

**Data represents all funds awarded.

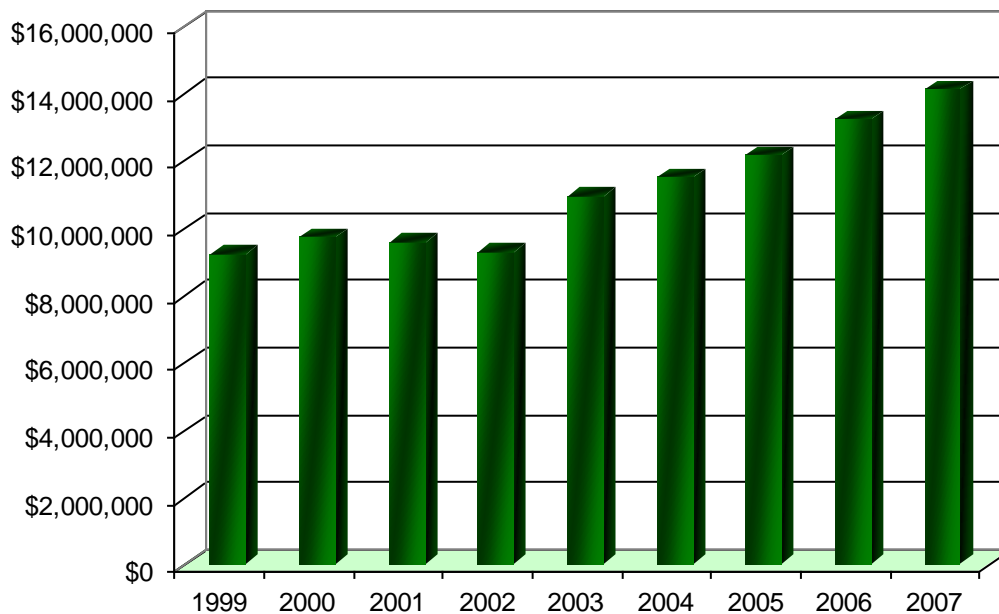
***Data represents funds awarded during the fiscal year. This calculation will be used in future fact books on grants/contract awards from 2004-05 forward.

**Combined Endowment Assets of
Minot State University and
the
MSU Development Foundation
1999 – 2007
(Market Value)**

Fiscal Year	*Amount	% Change
1999	\$9,218,091	---
2000	\$9,728,650	5.5%
2001	\$9,561,561	-1.7%
2002	\$9,279,462	-3.0%
2003	\$10,949,429	18%
2004	\$11,509,272	5.1%
2005	\$12,151,411	5.6%
2006	\$13,220,439	8.8%
2007	\$14,132,813	6.9%

*As reported in October

Combined Endowment Assets



Data Source: Minot State University Advancement Office

***Minot State
University***

***Student Fees
& Financial Aid***

MSU Tuition & Fees per Semester 2000-01 to 2007-08

Undergraduate	01-02	02-03	03-04	*04-05	05-06	06-07	07-08	% Chg
Resident	1,276.75	1,402.64	1,614	1,856	2046	2245.90	2386.44	6.3
Contiguous States and Provinces	1,557.25	1,695.64	1,955.25	2251	2,478.50	2718.90	2882.94	6.0
Minnesota Reciprocity	1,411.75	1,590.14	1,811.50	2,046	2,202	2389.40	2514.94	5.3
WUE**	1,838	1,947	2,296	2,646	2,911	3,192.40	3379.94	5.9
Non-Resident	3,150.25	3,359.64	3,893.50	4,494.50	4,935	5,408.90	5707.44	5.5

Graduate	2001-02	2002-03	2003-04	2004-05	2005-06	2006-07	2007-08	% Chg
Resident	1,636.75	1,787.64	2,055	2,366	2,605	2,857.40	3028.44	6.0
Contiguous States & Provinces	2,377.75	2,566.14	2,958	3,411	3,749.50	4,110.90	4344.44	5.7
WUE**	2,378	2,524	2,958	3,411	3,750	4,110.90	4344.44	5.7
Minnesota Reciprocity	2,037.75	2,302.14	2,638	3,023	3,228	3,493.40	3670.94	5.1
Non-Resident	4,111.75	4,387.64	5,071	5,856	6,427.50	7,042.90	7422.94	5.4

Tuitions & Fees are for on-campus courses. The tuition and fees charged for most on-campus courses cap at 12 credits. Distance Education courses do not cap at 12 credits, charges are calculated on all credits.

Also, in addition to the tuition and fees listed above, all distance courses will be charged an additional fee.

t

Distance education courses are charged an additional access fee. The access fee is a per credit charge to a student to cover the added costs associated with delivery of a course. The fee varies from \$5.00 per credit for Bismarck courses to \$42.50 per credit for on-line courses. Undergraduates may take up to 18 credits before an additional fee is charged. Graduate credits are capped at 12 credits for the tuition noted above.

*The 2004-2007 tuition rates include the ConnectND fee.

A full-time student, for tuition purposes, is a person who is enrolled in 12 or more semester hours of credit. The cost of tuition and fees for part-time enrollments is prorated. Some distance education courses pay per credit. These courses are not part of the 12 credit cap for charges.

** Western Undergraduate Exchange Enrollment. In 2005-06, states that are a member of WUE include: Alaska, Arizona, California, Colorado, Hawaii, Idaho, Nevada, New Mexico, Oregon, Utah, Washington, and Wyoming. Montana is also a member of WUE, but Montana students receive the contiguous states tuition.

MSU Student Activity Fee Distribution: 2006 – 2008

The student activity fee is included in the amounts stated on the previous page. The per semester fee for full-time students is separated into two portions: the University Fee and the Student Government Activity Fee. The University Fee supports activities that benefit the student body as a whole, while the Student Government Activity Fee goes toward supporting specific activities. The tables below provide a breakdown of the allocation of these fees. These are charged per semester.

University Fee	04-05	05-06	06-07	07-08
Student Union	7.50	7.50	7.50	7.350
Student Health	20.00	20.00	20.00	40.00
Gordon B. Olson Library	15.00	15.00	15.00	15.00
University endowment	1.50	1.50	1.50	1.50
Athletics	36.50	42.50	42.50	52.50
Total	80.50	86.50	86.50	86.50

Student Government Activity Fee	04-05	05-06	06-07	07-08
Art Gallery	1.75	1.93	2.90	2.90
Theatre Arts	2.61	2.61	2.61	2.61
Music	2.75	2.75	3.50	3.50
Student Tours	3.07	3.07	3.07	3.07
Student Government Association	16.60	16.60	16.60	21.00
Student Activities	8.20	8.20	10.00	15.00
Publications	8.08	8.08	10.08	10.08
KMSU	3.25	3.25	3.25	3.25
Placement	9.80	9.80	17.00	17.00
Fitness Center	0.00	5.00	25.00	25.00
Homecoming	0.00	4.00	4.00	6.00
Multicultural Center	2.00	2.00	2.00	4.00
Building Renovations	10.00	10.00	10.00	10.00
Orientation	2.00	2.00	2.00	0.00
Reserve	2.03	2.03	2.03	2.03
Student Clubs	0.00	2.00	2.00	2.00
Hockey Club	0.00	5.00	7.00	7.00
Mentoring	0.00	0.00	0.00	1.50
Tutoring	0.00	0.00	0.00	3.00
Total	72.14	88.32	123.04	138.94

Data Source: Office of the Vice President for Student Services

***Student Financial Aid: Requested/Awarded
Fiscal Years 1999-00 through 2006-07***

Fiscal Year	Financial Aid Applications	Financial Aid Awarded	Percent Awarded
1999-00	2682	2553	95%
2000-01	2451	2394	98%
2001-02	2459	2388	97%
2002-03	2355	2296	97%
2003-04	2647	2640	98%
2004-05	3244	2887	89%
2005-06	3518	2805	79.8%
2006-07*	4408	3916	88.4%

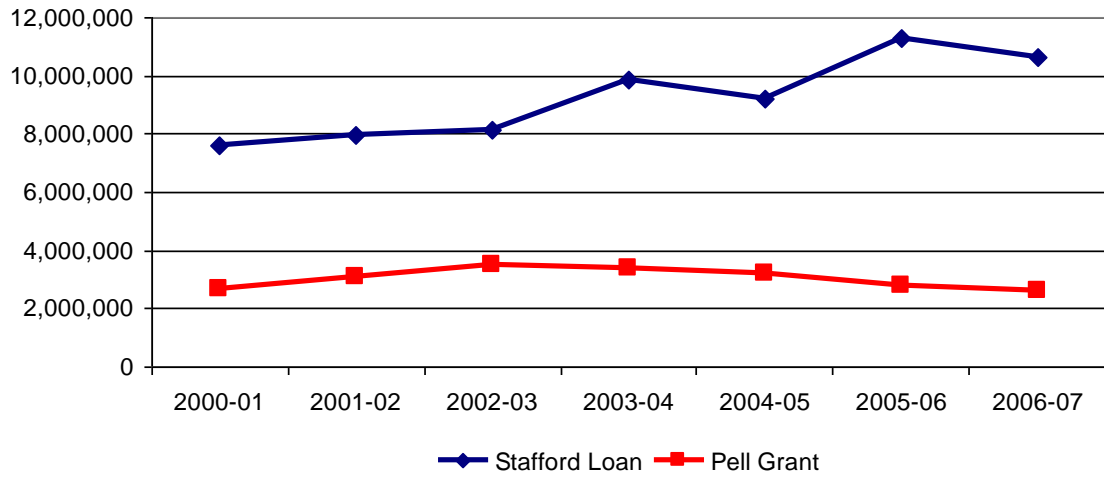
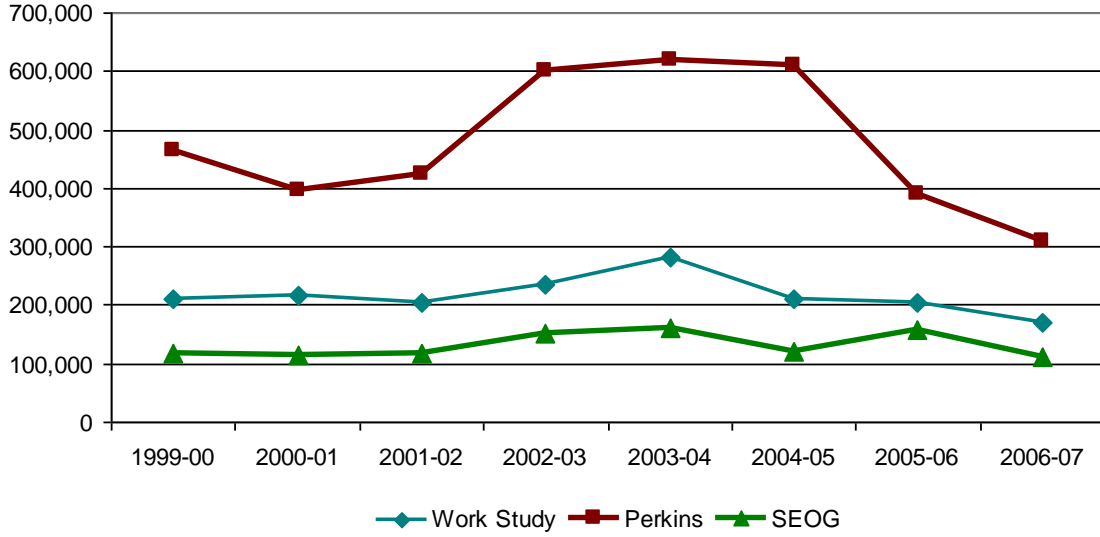
*2006-07 data represents all degree-seeking students

Type of Aid and Dollar Amount by Year

Academic Year	Work Study	Perkins	SEOG	Pell Grant	Stafford Loan	Total
1999-00	212,062	464,597	116,571	2,451,964	7,061,669	10,306,863
2000-01	217,063	397,089	114,784	2,653,456	7,587,671	10,970,063
2001-02	203,240	424,820	119,090	3,082,967	7,946,557	11,776,674
2002-03	235,136	600,835	151,777	3,482,579	8,158,218	12,628,545
2003-04	280,767	620,393	160,088	3,373,066	9,837,158	14,271,472
2004-05	211,054	609,178	119,375	3,179,660	9,197,139	13,316,406
2005-06	204,128	390,183	158,731	2,778,715	11,300,779	14,832,536
2006-07	169,616	308,403	113,024	2,614,624	10,613,747	13,819,414

Data Source: Minot State University Financial Aid Office and previously released MSU Fact Books.

Minot State University Financial Aid Trends 1999-00 through 2006-07



***Minot State
University
Information
Resources***

Data for the Gordon B. Olson Library is obtained through the library.

MSU Library Holdings: 1999-2007

Item	1999	2000	2001	2002	2003	2004	2005	2006	2007
Books	164,265	168,097	170,576	173,655	175,470	178,983	182,832	185,804	189,159
Periodicals	54,323	55,616	55,288	56,936	58,215	59,340	60,205	63,127	65,670
Documents	161,512	166,823	172,896	176,752	177,772	182,146	185,370	188,633	191,775
Microfilm	10,012	10,970	11,268	11,332	11,435	11,468	11,517	11,564	11,614
Microfiche	630,483	629,142	658,714	668,720	676,273	698,389	706,507	709,999	714,277
Subscriptions*	910	928	843	805	802	752	668	693	693
Maps	114,830	116,151	117,964	119,432	120,837	121,559	122,350	123,173	123,914
Non-Print Materials	12,810	13,172	13,392	13,625	13,743	14,835	15,185	15,487	16,007
Disc Recordings	4,172	4,174	4,174	4,173	4,173	4,173	4,173	4,173	4,172
Cassettes	3,937	3,937	3,942	3,948	3,946	3,938	3,951	3,952	3,949
Videotapes	2,176	2,470	2,604	2,785	2,846	2,927	2,994	3,234	3,253
Software	72	80	90	94	96	100	104	103	96
Compact Disks	1,528	1,586	1,657	1,698	1,757	1,853	2,003	2,080	2,359
DVD**				Not available				274	454

*Current journals, serial, and newspaper subscriptions. ** Added in 2006

Library Use Figures 1999-2000 to 2006-2007

Year	1999-00	2000-01	2001-02	2002-03	2003-04	2004-05	2005-06	2006-07
Materials Provided by Other Institutions	4,070	4,067	5,171	5,815	6,481	*6,233	7,594	4,547
Materials Requested by Other Institutions	4,635	4,798	4,461	4,590	4,685	*3,789	4,461	4,593

* Correction by library from data reported in 2005

Type of Material Ordered

	1998-99	1999-00	2000-01	2001-02	2002-03	2003-04	2004-05	2005-06	2006-07	% Chg
Books	962	1,262	1,281	1,446	1,526	1,373	1,437	2,246	1,861	-17.1
Articles	3,276	3,056	2,623	3,078	3,558	4,147	2,746	3,045	2,686	-11.8

***Access of Web Pages
Fiscal Year 2002-03 to 2006-07***

	2002-03	2003-04	2004-05	2005-06	2006-07	% Chg
Course Page	28,129	22,095	16,825	21,710	21,055	-3.0
Eres Home Page	69,041	40,847	22,525	28,579	23,307	-18.4

Electronic Reserve 2007

E-Reserve Item	2002	2003	2004	2005	2006	2007	% Chg
Faculty with accounts on E-Reserve	98	107	111	140	158	128	-19.0
Courses with pages on E-Reserve	291	336	407	417	424	244	42.5
Documents on E-Reserve	2,957	3,722	4,540	5,945	7,085	1,847	-73.9

Data for 2006 is as of September 2006

MSU Book Expenditures

Year	1998-99	1999-00	2000-01	2001-02	2002-03	2003-04	2004-05	2005-06	2006-07
Book Expenditure	\$109,256.25	\$103,264.20	\$83,462.90	\$91,303.35	\$42,977.27	\$78,832.53	\$105,871.33	\$96,666.05	\$97,099.08
Items Ordered	2,483	2,593	2,278	2,341	1,311	2,514	3,849	2,600	2,945
Average Cost/Book	\$44.00	\$39.82	\$36.64	\$39.00	\$32.78	\$31.36	\$27.51	\$37.18	\$32.97

Circulation of Library Materials

	1998-99	1999-00	2000-01	2001-02	2002-03	2003-04	2004-05	2005-06	2006-07
Number	35,179	32,507	31,025	29,264	29,487	30,521	30,468	23,377	21,111
% Chg	-25.0	-7.6	-4.6	-5.7	0.76	3.5	-0.2	-23.3	-9.7

Circulation of Material by User Class

User	2000-01	2001-02	2002-03	2003-04	2004-05	2005-06	2006-07
Students	21,220	19,510	19,629	21,022	21,076	15,257	14,058
Faculty	6,296	6,461	6,707	6,279	6,447	6,216	5,672
Local Patron	1,540	1,322	1,261	1,108	1,001	1,022	469
Interlibrary Loan				Not reported			912

Information Technology Central (ITC)

Services

- **Help Desk:** Accessible to students, staff, and faculty six days a week to provide computer hardware/software support, use of instructional technology, access to server support services, and resolution of network-related issues.
- **Messaging Services:** Provides campus e-mail and calendaring services via Microsoft Exchange for faculty and staff. Squirrel Mail for web-based student e-mail.
- **Anti-Virus:** Antivirus protection for faculty, staff, and students via Network Associates McAfee. Antivirus gateway scans incoming email for potential viruses. Server-based SpamAssassin identifies and labels incoming spam. End-user determine how to deal with spam.
- **Backup Services:** Synescort Backup Express. Handles basic/incremental backups on all mission critical production servers. Off-site storage ensures recovery of critical data.
- **Software Distribution and Maintenance:** Software for campus labs is distributed and maintained from common set of software images using Altiris.
- **Security Updates:** Microsoft Software Upgrades Server streamlines access to critical Windows updates.

Academic Services

- **Technology Assisted Classrooms:** Include more than 40 classrooms/labs: technology-enhanced instructional computers, Internet, projection capabilities, document cameras, DVD/VCR combo players, amplifiers, switch boxes for laptop to connect to classroom equipment.
- **WebCT Online Server:** Campus-wide course management system; cluster configuration for real-time failover protection.
- **Computer Labs:** 350 computers (12 labs). Provide access to campus network, Internet, e-mail, file sharing, and course specific resources.
- **Adaptive Technology/Accommodations:** Jaws, ZoomText, 21-inch monitors, monitor lifts available in open-access computer labs.

Campus-Wide Shared Resources

- One Novell Netware (Intel) server and one Novell 6.0 (Dell Poweredge 2600) server for file sharing and storage by faculty, staff, and students.
- One Novell Netware server supports the CBoard Student ID Card System.
- Dec Alpha 4100 with dual 466 Alpha™ chips with RAID 5, 24 GB storage and 1 GB RAM supports campus Web server and hosts numerous virtual Web servers including MSU Bottineau, the North Dakota University System Online, and the North Dakota Geographic Alliance.
- Multiple Windows 2000 and Windows 2003 (Intel) servers support: Syncsort Backup Express, Altiris Lab Imaging Systems, What's Up Network Manager, Windows Streaming Media, Linktivity Remote Support, Tegrity Multimedia, Microsoft Collaboration Suite, Sharepoint and team services, Live

- Communications, Microsoft Windows Software Upgrades (SUS0) and the Department of Education Start Reading, Literacy, and Math Web-Based Services.
- 2 Intel-based Red Hat Linux servers supporting campus DHCP and DNS services.
 - 1 Cisco 3720 Router supports 24-56K modem interfaces for campus dial-up services.
 - 1 Dell PowerEdge 4300 (Intel) server supporting MSU photo gallery database and other database projects in development.
 - 1 Intel-based Red Hat Linux server and disk storage array supporting: Web-based student email, LDAP directory services, Radius authentication, Web-publishing and storage space for faculty, staff, and students.
 - 1 Sun Ultra 5 (Alpha) serving as a firewall for grant-supported projects.
 - 95 laptops, 150 desktop computers, LCD projectors, numerous digital cameras, and a digital camcorder for student use (through ITC).
 - 16 computers located in Olson Library for Internet and access of full-text databases.
 - Internal Kiosk study areas available in Old Main, Student Union Atrium and 2nd Floor of Administration Building.
 - 12 computer labs for classroom and student use. Labs are equipped with Wintel platform computers and one Apple eBook lab. Several systems are equipped with assistive technologies for individuals with disabilities. Computers are on 3-year replacement cycle. Recycled computers are available for student use, 130 of which have been placed in residence hall rooms.
 - Laser printing is available in each lab. Performance ranges from 8-30 pages per minute. Color printing available in support of presentation and graphic design courses.

IT Architecture – Communications

Video – 5 Interactive Video Network (IVN) studios, clinic rooms, and video monitoring equipment with adaptive technology for speech, hearing, visual, behavioral, and learning assessments and treatments.

WAN – DS3 (45 Mbps) connection to Internet through gateway router.

- 45 Mbps UBR for Internet traffic (5 VBR for H.322/IVN traffic)
- 2 Mbps UBR and VBR dedicated to Speech Pathology Video Application.
- Asynchronous DSL connection provides Internet for support personnel and computer labs to support courses offered through the Center for Extended Learning (Minot AFB).

Campus Backbone LAN – 2 Foundry Super X 10 Gigabit capable Ethernet switches support the campus backbone network at wire speed of up to 10,000 Mbps. Approximately three and one-half miles of multimode fiber optic cable connects 16 campus buildings.

Building Networks – 1 or more wire rooms in each building on campus containing a rack-mounted switch capable of providing up to 100 Mbps full duplex connectivity to the

desktop and a high-speed uplink to the Gigabit Ethernet backbone. Each device on the backbone is SNMP-compliant for manageability.

Ethernet – The primary physical topology from the switch to the wall jack is switched Ethernet. Category 5 twisted pair copper wiring cabling is punched down on rack mounted punch blocks. Patch cables are used to connect RG45 connectors on the front of the blocks to a port on the switch. Cable lines are pulled vertically through conduit and horizontally through ceilings to campus labs, classrooms, and offices located across campus. The campus infrastructure contains approximately 100 miles of twisted pair cabling and supports over 2800 switch ports.

Campus Dormitories – Cisco 3700 router separates residence halls from the campus network. Fiber optic cable, connecting the Administration Building with six campus residence halls (Crane, Lura, Pioneer, Cook, Dakota, and McCulloch), provides Internet and Email access to residents. To ensure compliance with the required installation of Windows updates and antivirus software and to preserve shared bandwidth, students in the residence halls are required to authenticate via the Perfigo solution before accessing the network.

Off-Campus Access – Access to 24 analog lines connected to 56K modems supported by a Cisco 3700 router. A RADIUS server provides the off-campus authentication.

Wireless – Wireless networking zones available across campus in open-access areas including: the Library, Moore, Atrium, Model Hall, Student Union, Conference Center, Old Main and the external Quad area.

Data Sources

Data utilized to compile information for the Minot State University 2006 Fact Book include the following sources:

- Academic Projects and Research Office, Minot State University
- Advancement & Student Affairs Office, Minot State University
- Alumni Office, Minot State University
- Business Office, Minot State University
- Center for Extended Learning, Minot State University
- Computer Center, Minot State University
- Gordon B. Olson Library, Minot State University
- Grants and Contracts Office, Minot State University
- Information Technology Center, Minot State University
- MSU Fact Books – 1998 through 2005
- MSU Integrated Postsecondary Education Data Statistics Reports – Registrar's Office
- MSU Third Week Reports, September 2006
- North Dakota University System Office, Bismarck, ND
- President's Office, Minot State University
- Registrar's Office, Minot State University
- Undergraduate Catalog, Minot State University
- United States Department of Education Institute of Education Sciences, National Center for Education Statistics, Integrated Postsecondary Education Data System (IPEDS)

Glossary

The following definitions are taken directly from the U.S. Department of Education's NCES/IPEDS web site. For more definitions, use IPEDS web site: <http://nces.ed.gov/ipeds/glossary/index.asp?charindex>

Degree: An award conferred by a college, university, or other postsecondary education institution as official recognition for the successful completion of a program of studies.

First-year: A student who has completed less than the equivalent of 1 full year of undergraduate work; that is, less than 30 semester hours (in a 120-hour degree program) or less than 900 contact hours.

Freshman: A first-year undergraduate student.

Full-Time Equivalent: A measurement equal to one student enrolled full-time for one academic year. Total FTE enrollment includes full-time plus the calculated equivalent of the part-time enrollment. The full-time equivalent of the part-time students can be estimated using different factors depending on the type and control of institution and level of student.

Full-Time Student: Undergraduate—a student enrolled for 12 or more semester credits, or 12 or more quarter credits, or 24 or more contact hours a week each term. Graduate—a student enrolled for 9 or more semester credits, or 9 or more quarter credits, or a student involved in thesis or dissertation preparation that is considered full-time by the institution.

Graduate: A student who holds a bachelor's or first-professional degree, or equivalent, and is taking courses at the post-baccalaureate level. These students may or may not be enrolled in graduate programs.

Graduation Rate: The rate required for disclosure and/or reporting purposes under Student Right-to-Know. This rate is calculated as the total number of completers within 150% of normal time divided by the revised cohort minus any allowable exclusion.

Retention Rate: A measure of the rate at which students persist in their educational program at an institution, expressed as a percentage. For four-year institutions, this is the percentage of first-time bachelors (or equivalent) degree-seeking undergraduates from the previous fall who are again enrolled in the current fall. For all other institutions this is the percentage of first-time degree/certificate-seeking students from the previous fall who either re-enrolled or successfully completed their program by the current fall.

Undergraduate: A student enrolled in a 4- or 5-year bachelor's degree program, an associate's degree program, or a vocational or technical program below the baccalaureate.