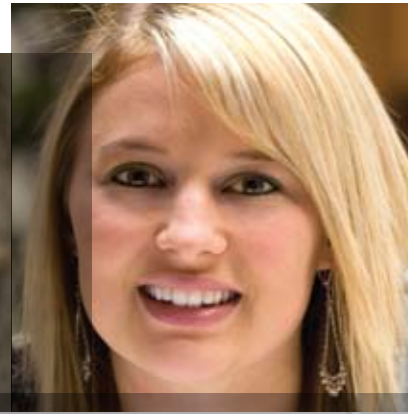




Minot State
UNIVERSITY



Be seen. Be heard.

SOCIAL WORK

Social workers wear many hats. They must be able to negotiate like lawyers and mediate like judges, with the cultural competence of diplomats and leadership skills of CEOs. The social worker is the essential link between individual families and their troubles on the one hand, and the community and its resources on the other. Social workers help people to help themselves; assist troubled families so they can stay together; and help communities assess and deliver needed services. If services are not available, the social worker jumps into the political arena and helps to create them by working with community leaders on public policy. Social workers will remain on the front line, providing direct services and advocating for the restructure of our country's national priorities, in order to improve the standard of living for all Americans.

Minot State's social work program is a well established program that began in 1976 and is accredited at the undergraduate level by the Council on Social Work Education. Graduates of the program receive a B.S.W. (Bachelor of Social Work) degree and are eligible to take the examination to qualify as a Licensed Social Worker (L.S.W.) in North Dakota. The program prepares students for entry level generalist social work practice with individuals, families, small groups, organizations, and communities. Particular emphasis is placed on needs of rural clients, those living in poverty, and the American Indian population of North Dakota. Students are prepared for graduate studies and may qualify for advanced standing in MSW programs.

The social work program's organization and implementation is conducted without discrimination on the basis of race, color, religion, creed, gender, ethnic or national origin, disability, age, political orientation or sexual orientation.

The curriculum includes a strong liberal arts base, studies in social work practice, social welfare policy, human behavior, social research, and additional coursework in economics, psychology, sociology, and political science.

Minot State's social work program does not give academic credit for life experience or work experience, nor does the program allow such experience to be substituted for the field.



Get Informed...

PROGRAM DETAILS
Susan Herzog, MSW/LICSW
Minot State University
at Bismarck State College
1815 Schafer St., 1st Floor, Office 129
Bismarck, ND 58501
701-224-5769
susan.herzog@minotstateu.edu

ACCREDITING AGENCY
Commission on Institutions of Higher Education
North Central Association of Colleges
and Schools
30 North LaSalle Street, Suite 2400
Chicago, IL 60602
312-263-0456/1-800-621-7440

(10/08)

www.minotstateu.edu
1-800-777-0750 ext. 3350

Career Opportunities

The demand for social workers has grown and is expected to continue increasing. Job availability will, of course, depend on available funding, and funding is often dependent on federal, state, and local government. Employment opportunities are most concentrated in urban areas, but many social workers also work in rural settings. Jobs are found in a wide variety of places: hospitals, social service offices, residential treatment centers, schools, nursing homes, community-based programs, and legal/judicial agencies. Clients include people of all ages, cultural backgrounds, levels of skill, and socio-economic standing. Some of the problems and conditions that are addressed include mental illness, child abuse and neglect, alcohol and drug abuse, mental retardation, legal problems, disabilities, foster care and adoption, family violence, and poverty.

Internship/Fieldwork

Students are required to complete 450 hours of direct practice with either a public or private human service agency. This supervised field practice enables students to get valuable hands-on experience in working with clients. The internship is also supplemented by an on-campus seminar that deals with integrating social work theory with the reality of specific practice situations.

Program Outline

1. General Education	38 credits
Social work majors are required to take the following specific courses:	
PHIL 101 or 102	3
SOC 101 Introduction to Sociology.....	3
PSY 111 Introduction to Psychology.....	3
BIOL 111 Concepts of Biology	4
2. Required Core	41 credits
SWK 250 Interpersonal Skills	3
SWK 255 Social Work Profession.....	3
SWK 256 Development of Social Welfare	3
SWK 330 Behavior in Pluralistic Soc	3
SWK 331 Systems Theory & Family Dynamics	3
SWK 335 Social Work Methods I	3
SWK 340 Social Welfare Policy.....	3
SWK 426 Social Work Methods II.....	3
SWK 427 Social Work Methods III.....	3
SWK 432 Field Education	10
SWK 433 Field Seminar	1
SWK 434 Field Research.....	1
SWK 491 Senior Seminar	2
3. Required Support courses.....	32-33 credits
ENGL 315 Professional & Technical Writing.....	3
PSY 344 Dynamics of Addiction.....	3
HMS 203 Health Care Through Life Span.....	3
POLS 115 American Government	3
POLS 116 State & Local Government	3
PSY 270 Abnormal Psychology	3
Select one of the following.....	3
SWK 401 Cont Issues: NA Families.....	3
HIST 261 American Indian History	

Select one of the following.....	3
SOC 361 Comparative Ethnic Studies.....	3
SS 283 Ethnic & Cultural Diversity in America..	3
Select one of the following:.....	3-4
PSY 241 Intro to Stats Analysis of Behavior	
MATH 240 Applied Statistics	
Select one of the following:.....	3
ECON 201 Principles of Macroeconomics	
ECON 202 Principles of Microeconomics	
Select one of the following:.....	3
PSY 242 Research Methods in Psychology	
SOC 278 Social Research Methods	

4. Electives..... 16 credits
Students take elective courses and/or complete minors or concentrations in order to fulfill the minimum 128 credits required for the degree.

**5. Minimum Total Credits
for Graduation..... 128**